



# THE SHERSTON CLIFFHANGER



PUBLISHED BY SHERSTON PARISH COUNCIL

AUGUST 2018

DELIVERED FREE

## Merci et bien fait!



So, after the months of build-up to our annual Boules festival week, it was launched with the Boules & Moules party at The Angel. It continued with samba, cricket, football, crafts, hill-climbs, high teas, live music, steam engines, Pimm's, paella, singing, tombola queues, bacon butties, bell-ringing, oh and a lot of Boules matches, and it ended with a thanksgiving service at the village hall. Magically, the High Street was cleared super-fast and there we were at 9.00pm on Sunday evening watching duck feathers float in the air and wondering how we still had so much sand in our trainers.

Here are a few photographs of the week to remind you of our spectacular Boules events and our amazing luck with the sunshine on the day.



A total of 128 team entered for this year's tournament – both from Sherston and surrounding villages, and further afield, including Wales, who were our winners from last year, and France .

### **Congratulations to the winners this year:**

Boules Tournament actuelle: Two Pears plus one  
Colts (13 – 17): Capt. James Hulme  
Junior Tournament: Capt. Josh Stokes

Let's not forget the duck race which was won by Eden Masks duck 735, with second place in the pecking order going to Pete Brock, and third place won by Lavinia Courbelly-Stourton. PTO....





Thank you to everyone who supported this year's Boules Festival. Everything you did and every penny you contributed goes to good causes in and around the village. We're conscious that a lot of people turned up and helped on the day and turned up again to help sweep up and dismantle the marquees and tents – thank you everyone, we will go for a complete roll of honour in the September issue of the Cliffhanger.



**Copy deadline:** 10<sup>th</sup> of the previous month.  
Send to [editorial@sherstoncliffhanger.co.uk](mailto:editorial@sherstoncliffhanger.co.uk)  
or hard copy to Sherston Post Office Stores.

**What's On:** contact Caroline Moore on  
841405 or [info@sherstoncliffhanger.co.uk](mailto:info@sherstoncliffhanger.co.uk)

The size and content of the Cliffhanger depends entirely on the amount of copy we receive from individuals and groups. So, if you feel you have something of interest, please don't hesitate to tell us. Around 400 words would be a maximum but the shorter the better and less editing would be needed.

**Top tip:** if you're telling us of an event coming up, write a short piece about it rather than just supply basic details or a poster. You will then get a short article published to help boost interest as well as a mention in our What's On section. Don't forget to tell us how your event went, with a photo if possible.

**To advertise, contact:**

Tahiti van Rooyen  
[advertising@sherstoncliffhanger.co.uk](mailto:advertising@sherstoncliffhanger.co.uk)

Advertising rates:

for 12 months:

1/4 page £280; 1/8 page £150; and 1/16 page £70

for one month:

1/4 page £80; 1/8 page £50; and 1/16 page £30

Inserted leaflet drop £100 max size A5

Whilst every effort has been made to ensure the accuracy of advertisements contained in this publication, Cliffhanger cannot accept any liability for errors and omissions. Inclusion of an advert should not be taken as an endorsement by Sherston Parish Council.

Please remember the Cliffhanger is delivered free to every home and business in the parish – more than 1000 copies. This and all previous editions are also available online at [www.sherston.org.uk](http://www.sherston.org.uk)

PRINTED BY THE COMPLETE PRODUCT COMPANY, PINKNEY



Delivering a First Class Service



Tel 01666 840456 / 841127



Finally – this was the first year for most of the Boules Committee – and the new Chair insists on having the last few words ...

'2018 has been another great year for our annual Festival, and I have had many compliments and positive feedback from those who have taken part, as well as those who came to watch and enjoy English village life at its very best.

'However, no event like this happens on its own, and I want to thank every member of the 14-strong committee who worked hard over the last six months to make it all come together; so Nigel, Bob, Suzie, Emma, Kit, Lorna, Margot, Gary, David, Huw, Sharon, Caroline, and Chris, thank you so much for making my first year as Chair a much easier one.'





## DJ. HICKS

### ANTIQUÉ FURNITURE

SALES, RESTORATION & UPHOLSTERY  
Unit 1a Warren Business Park, Knockdown  
Nr Tetbury, Gloucestershire GL8 8QY

Tel: 01454 238004  
Mobile: 07889 655152

Email: [djhicksantiques@hotmail.co.uk](mailto:djhicksantiques@hotmail.co.uk)  
Website: [www.djhicksantiquefurniture.co.uk](http://www.djhicksantiquefurniture.co.uk)

## Sherston's first jigsaw festival!

Piece by piece, it is all coming together: Sherston's first jigsaw festival, raising funds for the village hall improvements. See over 400 puzzles displayed over the three days of the August Bank holiday (25-27 August).

Come and admire all the work done by a team of volunteers who have completed the most beautiful puzzles and choose one that you would like to create yourself. You can see that it is complete with no pieces missing and we will rebox it for you to take home. Prices will vary but you will be able to bag a bargain!

Admission £1, with accompanied children free of charge. Super raffle with lots of prizes. Further information from Marion on 841147 or Lin on 840846. Looking forward to seeing you there!

## Sherston Market

Our next market is on Saturday 11 August from 10.00am to 4.00pm in the village hall. As usual, we have lots of stalls, some new ones and some regulars. Emma's Kitchen will be doing Vintage Teas consisting of sandwiches, scones and jam, cakes and a pot of tea, all served on pretty china, a special treat in this lovely weather. The Vintage Teas are £12 for two. There is a picture on The Sherston Market Facebook page. Bookings for this are available, please contact Emma on 07979 833823. The usual bacon and breakfast rolls and drinks will still be available. See you there.

## Sherston Auto Services

### 01666 840522

Unit 1, Lordswood Farm, Sherston, Malmesbury SN16 0JZ

**Servicing & repairs**

**Tyre fitting  
& wheel balancing**

**Diagnostic  
& service indicator reset**

**all at competitive rates**

FREE COLLECTION & DELIVERY  
IN THE SHERSTON AREA

Courtesy cars available

**All major credit cards accepted**



**M.O.T  
Test Centre**

Member of the Ford Blue Oval Club  
Genuine Ford parts fitted



## Christian Aid Week 2018

With apologies for the length of time it has taken to publish these figures, due to my going on a very long motorhome trip to southern Italy, here are the totals collected for Christian Aid in Gauzebrook this year:

Sherston £1276  
 Stanton St. Quintin £877  
 Hullavington £280.20  
 (CA Big Brekkie)  
 TOTAL £2433.20

As you will see our total is somewhat reduced on previous years. Some key members of the collection team have moved away and it proved impossible to find replacements to do door-to-door collections in some villages. Nevertheless we raised a sum of money which will enable Christian Aid to do life-saving work in some of the poorest countries in the world and I thank those people who gave up their time to knock on doors and ask for donations for their hard work. Thank you also to all those people who generously gave money.

Could you help to collect next year? Calling on a large number of people encourages giving by those who might not otherwise think of doing it and a small donation from a lot of people soon adds up to a good total. Please get in touch with me if you can help. If you speak to me now I will remember your offer until next year, as one person in Sherston can testify!

Sue Robinson, Gauzebrook Group CA Week organiser 841263

## Sherston Senior Club

On 29 May, 'End of the Track' kindly stood in for the planned entertainment, which was cancelled due to illness. We had a great afternoon.

On 12 June, the whole club were invited to Nesley Farm for a garden party. We all arrived in a coach that just about made it through the narrow lanes. The weather was lovely and our hosts, David and Susan Morris, were very generous. Those who wished to had a tour of the gardens prior to tea, which took place in two teepees that had been used on the previous Saturday for their son's wedding. Everyone had a good time. Many thanks to Susan and David.

Our next meeting was the fated 'Talk on Marvellous Moths' and, unfortunately, illness struck again and so instead his wife and a friend, known as the 'Two Sues', showed beautiful slides of the butterflies of Gloucester which everyone enjoyed.

On 24 July our speaker will be from the Red Cross to enlighten us on 'Everyday first aid', on 7 August, we will have an 'Estates and toyboys' talk by the Cooperative Society and on 21 August we will be off on a half-day mystery tour - free to members, visitors £10.00. Details will be on the posters or contact Helen Quirk 840516.

**Luckington Pre-School**  
 Established for over 30 years

Weekly Forest School sessions



• Caring, enthusiastic and committed staff  
 • Montessori inspired environment  
 • Operates within Luckington Community Primary School grounds

Monday to Friday  
 9:00 - 13:00  
 Term Time Only  
 2 1/2 to 5 year olds

WANT TO FIND OUT MORE?  
 Come and visit us  
 01666 840028  
[chair@luckingtonpreschool.org.uk](mailto:chair@luckingtonpreschool.org.uk)  
[www.luckingtonpreschool.org.uk](http://www.luckingtonpreschool.org.uk)

Ofsted  
 Outstanding  
 Provider

ALL MAKES OF CARS, FOUR WHEEL DRIVES  
 AND LIGHT COMMERCIAL VEHICLES:

**R&B** vehicle services

- ✓ MOT Testing
- ✓ Vehicle Repairs
- ✓ Servicing
- ✓ Diagnostics

Free loan cars are available



Call us on **01454 238 700**  
 or visit **[www.mottetbury.co.uk](http://www.mottetbury.co.uk)**



BAY 4, SHERSTON WORKS, KNOCKDOWN, TETBURY GL8 8QY

## Sherston at the World Cup final!

Henry Birtles and his 14-year-old son, who live in the village, represented Sherston at the World Cup final last month.

Henry took a gamble after England beat Colombia on penalties that England would get to the final. As we know, England unfortunately lost to Croatia but it didn't stop Henry and his son still enjoying a trip of a lifetime where he proudly displayed 'Sherston' emblazoned on an England flag for all to see.



## WE WILL REMEMBER THEM



### Private 692 Percy Laban Neal

1st Batt Welsh Guards

Who died aged 28 on Friday 30th August 1918

Son of Ezra Neal and Fanny née Berry of Sherston, Wiltshire

Remembered with Honour, Aberdare Cemetery, Glamorganshire, South Wales

Percy Laban Neal is remembered on the wooden plaque inside Sherston's parish church. But his name is recorded as Laban Neal.

Percy had moved from Sherston to Aberdare around 1905 to work alongside others from Sherston who had migrated to South Wales to work in the newly opened coal mines.

Percy was sent home from the Western Front to Cardiff General Hospital where he died from the effects of gassing. He is interred in the cemetery in Aderdare.

The bells of Holy Cross Church will be rung at 11.45am on 30 August.

## Location, location, negotiation.

Stacks is the most experienced buying agency in the UK, finding the right houses and negotiating the best prices to save you time and money.

Call us to talk about what you are looking for.

Craig Fuller

Regional Director – Cotswolds, North Wiltshire, Bath & Cheltenham

Stacks Property Search & Acquisition Ltd

07767211707

craigfuller@stacks.co.uk

**STACKS**

PROPERTY SEARCH & ACQUISITION

www.stacks.co.uk

arp

RICS

THE NATIONAL TRUST



### Summer Feast

Crafted at Whatley

Three course lunch - £19.50 including coffee  
Available Monday - Saturday  
from 12 noon to 2pm  
Join us this summer in our  
brasserie or kitchen garden

Book online at [whatleymanor.com](http://whatleymanor.com), call 01666 822 888  
or email [reservations@whatleymanor.com](mailto:reservations@whatleymanor.com)

GREY'S  
BRASSERIE

at whatley manor



[whatleymanor.com](http://whatleymanor.com)

@Whatley\_Manor @whatleymanor @whatleymanor



# Ride + Stride

Once again, as September approaches, but hopefully not the end of fine weather, Ride+Stride should be in the diary for when you can raise money for Wiltshire Historic Churches Trust (Charity Number 1075598).

Of course, Ride+Stride has to compete with other similar events, all asking for money for worthy causes, so this is a big plea for your support! If you enjoy walking, cycling or can manage on horseback, or mobility scooter (but not by car), please consider taking part and help to raise money to maintain and repair Wiltshire's churches, particularly as we will need money for repairs to Holy Cross church in the next few years and so may need to request a grant from the Trust and we will get preferential consideration if we have participated in Ride+Stride.

Taking part in Ride+Stride is an excellent way to combine raising money for your church, while spending an enjoyable and healthy day out exploring your local area and visiting some of Wiltshire's beautiful churches and chapels. Most of them will welcome you with refreshments - and many have loos! Church lists will be provided.

Why not have a fun day out with friends or family, take a picnic or have lunch at a village pub on the way? You can cover as much or as little distance as you want,

most sponsors are generous and will reward even the shortest journey and walking between just one church and another can constitute participation. If you don't want to ask for sponsorship, ask for or just make a donation and still join in, any money is accepted! Sponsors can also use 'Just Giving'.

For the more energetic, there are prizes to be won, up to £500 and the Brook Cup for the best all-round parish and junior prizes for younger age groups.

Half of all money raised is shared out to go to the church of your choice, the other half is used by the Wiltshire Historic Churches Trust to award grants to churches with special maintenance needs. As in previous years we hope to make over £50,000, so please get out there on Saturday 8 September. Plan a route that suits your energy levels or get ideas from [www.visitwiltshire.co.uk/things-to-do/activities/cycling](http://www.visitwiltshire.co.uk/things-to-do/activities/cycling).

For more information and sponsorship forms contact Pam Pickthall (841072 [pampickthall@hotmail.co.uk](mailto:pampickthall@hotmail.co.uk)) or Charles Graham (01672 514301 or [ctg100@hotmail.com](mailto:ctg100@hotmail.com)) or visit [www.wiltshirehistoricchurchestrust.org.uk](http://www.wiltshirehistoricchurchestrust.org.uk).

Thank you., Pam Pickthall. Churchwarden

## Hello

Just a quick word to remind you all that I am around for general help and support on a wide variety of issues including transport, mobility and safety around the home and reducing the feeling of loneliness. Give me a call on 07557 922020 and leave a message. I will get back to you as soon as possible.

Ellen Blacker, Health and Wellbeing Champion

Traditionally finished **COTSWOLD STONE**  
of the very finest quality  
direct from our quarry



**Walling Stone •**  
**Building Stone •**  
**Roofing Tiles •**  
**Garden Stone •**

Tel: **01666 840443**  
Fax: **01666 840191**

[www.knockdownstone.co.uk](http://www.knockdownstone.co.uk)  
Knockdown Stone,  
Halfway Bush Farm, Knockdown,  
Tetbury, Gloucestershire GL8 8QY

*Shear Class & Serenity*

Uni-Sex Hair Salon and Beauty Salon  
Sherston 01666 840840

**Tuesdays - Saturdays**  
**Late Opening and Reduced Rates for**  
**Senior Citizens on Thursdays**

*For all your Hair & Beauty*  
*Treatments*  
*Appointments not always necessary*  
*please call in*

**MATRIX** **BIOLAGE**



**Creative Hairdressing** has fully qualified and experienced stylists in all hair lengths and styles, both modern and traditional.

Come and join us for that creative experience so we can create that individual look for you.

For more information or to book an appointment contact

**Creative Hairdressing,**  
**3 Market Place,**  
**Tetbury,**  
**01666 502949**  
[www.creativehairdressing.co.uk](http://www.creativehairdressing.co.uk)

**GHD** **GOLDWELL** **BED HEAD**

# Fun in the Sun is back!

Fun in the Sun is delivered in partnership with Wiltshire Cricket and Innov8 Sportz in 27 villages across the county during the summer holidays, aimed at delivering free regular sports sessions for young people in rural locations.


The programme enables young people aged 5-11 years old the opportunity to access multi-sport activities provided by fully qualified sports coaches on a weekly basis in their local communities. Sports delivered may change on a week-by-week basis but will include tag rugby, cricket, football, dodgeball, tennis, rounders, athletics and team activities.

Fun in the Sun will be held at Sherston rec on Wednesday 1, 8, 15 and 22 August from 10.00am until 11.30am. There will also be sessions on Grittleton Recreation Field on Monday 30 July and 6, 13 and 20 August from 12.30pm until 2.00pm.

Children must bring with them a completed consent form. These can be downloaded from <http://www.wiltshire.gov.uk/leisure-fun-in-the-sun> or collected at their first session of attendance. Places will be allocated on a first come, first served basis.




For more information about the Fun in the Sun programme, please email [sportsdevelopment@wiltshire.gov.uk](mailto:sportsdevelopment@wiltshire.gov.uk) or call 01722 434437.

**HELPING OUR CUSTOMERS GET THE MOST FROM COUNTRY LIVING FOR GENERATIONS**



**VISIT OUR COUNTRY STORE**  
Open to the public and trade customers

- Animal Feeds
- Animal Bedding
- Gardening Equipment
- Country Clothing
- Footwear

**T H WHITE**  
COUNTRY STORE

Sherston Works  
Knockdown  
Tetbury Glos GL8 8QY  
01454 238181  
[www.thwhite.co.uk](http://www.thwhite.co.uk)

**Logos:** V12, Huggs of Fife, DRAPER, Sherwood, HILTI, westland, PUPPA, HUNTER

## Sherston Village Hall 300+ Club

For further information on how to join, phone Lin Prior on 840846.

### July 2018 Draw

|     |     |                      |     |
|-----|-----|----------------------|-----|
| 1st | 132 | Olive Spencer        | £13 |
| 2nd | 72  | Pete Johnston        | £12 |
| 3rd | 173 | Sue McKechnie        | £11 |
| 4th | 219 | Mrs Cross            | £10 |
| 5th | 158 | Chris Pickthall      | £9  |
| 6th | 130 | Veronica Skeffington | £8  |
| 7th | 42  | Tony Towle           | £7  |

Collectors: Anne Andrews, Mary Goulding, Pat Moody, Rachel Moody, Janet Platts, Lin Prior, Margaret Thacker and Jill Woodward.

## Small Ads

*You can now advertise items for sale or wanted in the Cliffhanger including services required such as gardening or cleaning. Cost is £2 for up to 20 words. Copy should be in paper form and put through the letterbox at 37 High Street by the 15th of the month together with £2 in cash.*

*All monies raised will be donated to charity.. Private advertisers only please – no businesses.*

**IAN ASHBY**  
(SHERSTON)

**Private hire**  
**6 seat taxi**

**07875 844463**  
**01666 841224**

## Firewood

*Dry seasoned,  
hardwood logs  
Barn stored  
any size available  
Also kindling sold in nets  
Delivered to your door  
For more details call Steve on  
01454 232941 or  
07974194012*



**SHERSTON CONGREGATIONAL CHURCH**  
In the British Schoolroom, Cliff Road, Sherston

### August Services

Sunday 5th, 11.00am - Reverend Andrew Williams Tarling

Sunday 12th, 11.00am - Reverend Andrew Williams Tarling - Communion Service

Sunday 19th, 11.00am - Reverend Andrew Williams Tarling

August 26th, 11.00am - Reverend Andrew Williams Tarling

# WI Report

WI members felt a bit like they had been transported back to the schoolroom at their July meeting as our visiting speaker displayed a poster of our digestive system. Katherine Brooke-MacKenzie, a Colonic Hydrotherapist, came to speak to us about 'having the guts to be healthy'. She concentrated on the benefits of maintaining a healthy gut environment, rather than giving us a list of foods we should and shouldn't eat.

She described to us how the digestive system works, how each part needs to work well to allow

the next part of the process to work effectively and how factors such as stress, poor diet and medication can affect the health of the digestive system. As is true for the other parts of our bodies, the healthier our gut environment is, the more likely we are to feel well. However, life often gets in the way and we are not always as good at listening to our bodies as much as we should.

On a separate topic, we were also fortunate to have a short presentation from a local student who is undertaking the Duke of Edinburgh Award. Abbie Hudson explained about the five challenges of the Gold Award - skills, physical, volunteering, expedition and residential. She described how participation in the Award had benefited her personally and how she had acquired skills she would not otherwise have achieved as a direct result of undertaking the challenges.

Our next meeting will be on Thursday 2 August when Paul Evans will be speaking to us on 'Poems and Monologues'. At our September meeting we will be hearing from Charlotte Mortimer about the Wiltshire Air Ambulance.



**J. M. SERVICES**  
House Maintenance & Repairs


- Carpentry and Joinery
- Tiling
- Painting and Decorating
- Kitchen Installation
- Handyman Jobs

E: [jm.srvcs@gmail.com](mailto:jm.srvcs@gmail.com)  
M: 07500 410803  
M: 07493 294901  
Nello Magalhães

We invite you to pop in for a

## CUPPA, CAKE AND CHAT

AT THE BRITISH SCHOOL ROOM  
Alternate Tuesdays, (when there is no Senior club.)  
2.30 - 4.0pm.



ALL WELCOME!

## Computer Problems?

Home or Business Support  
We Come To You!

Fast Service, PC & Laptop Repairs, Virus Removal, Data Recovery  
Wireless Networks, Broadband & Email Setup, Security and Parental Control,  
Hardware and Software Sales. Microsoft Qualified, Local & Friendly.

**Silverchart Systems Ltd**  
[www.silverchart.co.uk](http://www.silverchart.co.uk)

**CALL US NOW!**  
01666 840531 [office@silverchart.co.uk](mailto:office@silverchart.co.uk)

**FIRST CLASS FREE**

PULSE4LIFE CLASSES

## FRESH AIR FITNESS 0900 YOGA 1030 PILATES 1215 FRIDAYS IN SHERSTON REC & VILLAGE HALL

WITH STUART DUNN

[pulse4life.co.uk](http://pulse4life.co.uk) 07986 003602

## Lumley Garden & Pet Supplies

Stainsbridge Mill, Gloucester Road, Malmesbury, Wiltshire, SN16 0AJ  
Tel: 01666 822325 E-mail: [etlumley@googlemail.com](mailto:etlumley@googlemail.com)  
[www.lumleypetsupplies.com](http://www.lumleypetsupplies.com)



- \* Top Leading Brands of Food & Treats \*
- \* Our Own Label Premium Dog Food \*
- \* Bowls, Toys & Accessories \*
- \* Beds & Cushions \*
- \* Wild Bird Food & Products inc. Live Food \*

"for you and your pet's every need."

Delivery Service Available



## CALL TODAY 01666 503632

**iphe** Registered Plumber **safe** **OFTEC**

Your local company for boiler servicing, system maintenance and upgrades - Oil, Natural Gas & LPG  
Complete bathroom design and installation.

[www.indplumbingandheating.co.uk](http://www.indplumbingandheating.co.uk)  
[info@indplumbingandheating.co.uk](mailto:info@indplumbingandheating.co.uk)



# Tolsey News

*Judy Sharp*



## Please don't abuse our services or our staff!

As there is increasing demand on our services, it is so much more important to ensure that patients go to the right place for the particular problem they are facing.

It is important to remember that the GP Surgery is not an emergency service, neither is it a minor injuries unit. Medical advice can also be sought through the NHS 111 service, free to call from any landline or mobile phone, 24 hours a day, 365 days a year. We do understand that sometimes you need to see a doctor quickly, and we will do our best to ensure that you are able to do that if it is appropriate. We ask that you give a few details to the receptionist to be passed onto the doctor so that your query can be dealt with quickly and efficiently. Our triage system is for medically urgent issues and ensures that a doctor will look at each call made to the surgery in the morning and call the patient back, usually within an hour, then make a decision about how that patient is dealt with. However, if a patient calls with what is obviously a minor injury, eg a sprained ankle, the receptionist may advise the patient to go to the nearest Minor Injuries Unit, or if it is a query about dressings, wounds or immunisations, they will be directed to our practice nurse.

If you call the surgery and enter our triage system please ensure that:

- You give the receptionist details of the problem including an indication of why it is urgent
- You give the correct telephone number to be contacted on.
- You are in an area with good reception
- You are available to attend the surgery if necessary and at the time given to you by the doctor/receptionist
- If you do not hear from the doctor within two hours, please call the surgery as there may have been a problem getting through to you

Appointments for issues that are not considered to be urgent can be booked online or by telephone through our receptionist, although we would ask you not to call before 10.30am as the phone lines are very busy in the early morning. Patients wishing to see a particular doctor may find that they have to wait a few weeks for an appointment but there are usually routine appointments available within two weeks.

It is sad but true that some of our patients take out their frustrations on the person who answers the phone or stands behind the window who is only trying to help. It is never acceptable for patients to speak to our staff in an abusive manner. We have a zero tolerance policy of abuse towards our staff and they will be instructed not to continue to speak to patients that are abusive to them on the phone or in the surgery. We do our best to ensure that the patients who need to be seen urgently are given appropriate appointments but we are mindful of those patients who abuse the system.

## New Care Co-ordinator

We are delighted to welcome Fatima Birkett to our team. She has been with us for a few months now and has already got to know many of our more senior patients. Fatima can be contacted through the surgery.

**Watercolour and Acrylic Workshops**  
[www.briansmithartist.com](http://www.briansmithartist.com)

Brian Smith professional artist  
 Small groups (maximum 5 students)  
 2 or 3 hour sessions weekly  
 All abilities welcome  
 Studio based at Pinkney Park, Sherston  
 Contact Brian: 07778623344 Email: [briansmithartist@gmail.com](mailto:briansmithartist@gmail.com)

**JAMES PYLE & CO.**  
 GLOUCESTERSHIRE & GLOUCESTERSHIRE  
 Sales and Lettings

**Local Knowledge  
 National Coverage**

Call us in complete confidence for  
 a **free valuation** and advice  
 on all property matters

01666 840 886  
[jamespyle.co.uk](http://jamespyle.co.uk)  
[interested@jamespyle.co.uk](mailto:interested@jamespyle.co.uk)  
 The Old School, High Street, Sherston

NAEA The Property Ombudsman  
 ARLA APPROVED CODE

*You'll feel at home with  
 James Pyle & Co*

# Over the Badminton jumps without a horse?

The local Rotary Club of the South Cotswolds is again organising its Badminton Horseless Team Event – a fun-run over the world-famous Badminton three-day event course.

This annual event, which has been organised and hosted by the Rotary Club of the South Cotswolds since its inception, is now in its 35th year. It is held by invitation of the Duke of Beaufort and on his estate, Badminton Park. The all-terrain course takes the runners and canicrossers (runners with dogs) along country tracks in sight of the deer herds, and through fields and woods.

The event is an opportunity for runners to experience the unique surroundings of Badminton Park and try out (or go round!) many of the familiar obstacles on the three-day event course. The event

raises money for Rotary Charities and allows runners to seek their own sponsorship for their own charities. Over the years the event has raised many hundreds of thousands of pounds for charitable causes through entry fees and sponsorship.

This year's event is on Sunday 30 September. Registration starts at 8.30am (online pre-registration is available and gets you free car parking; car parking is £5 on the day); the race itself starts at 10.00am. Adult entries are £15; junior (aged 15 or under) entries are £10.

Runners can enter as individuals or in teams for 5k or 10k distances. Individual times are provided through professional chip-based timing from Full On Sport. For details of the event and how to enter please visit either:

[www.fullonsport.com/event/badminton-hte-2018-5k--cannicross/profile](http://www.fullonsport.com/event/badminton-hte-2018-5k--cannicross/profile)

[www.fullonsport.com/event/badminton-hte-2018-10k--cannicross/profile](http://www.fullonsport.com/event/badminton-hte-2018-10k--cannicross/profile)

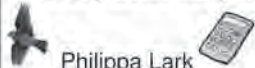
**Family or friends visiting?**  
**LANTERN HOUSE, SHERSTON**



**SELF-CATERING  
HOLIDAY COTTAGE**  
 (5 ADULTS & 2 BABIES/ INFANTS)

**Call 07928 809624**  
[www.cotswolds.plus.com](http://www.cotswolds.plus.com)

**Tetbury Bookkeeper**



Philippa Lark

Local References  
[phil.lark@hotmail.co.uk](mailto:phil.lark@hotmail.co.uk)  
 01666 505824  
 07771 914512

## Foxley Plumbing & Heating

Oil Boiler Installation, Servicing and Repairs  
 Oil Tank Replacement  
 Heating Installation and Repairs  
 Bathroom Installations  
 Unvented Cylinder Systems  
 No Job Too Small

### Tim Hibbard

Malmesbury (01666) 822863  
 Mobile 07966 462202  
 Email [foxleyph@btinternet.com](mailto:foxleyph@btinternet.com)



For the Widest Range of Bedding,  
 Hanging Basket & Patio Plants in the Area

**FOXLEY ROAD NURSERIES**

Herbaceous Perennials & Alpines  
 Vegetable and Herb Plants

**Foxley Road, Malmesbury**  
 Tel: 822171 [www.foxleyroadnurseries.co.uk](http://www.foxleyroadnurseries.co.uk)




**Andy Walden**  
 Sherston, Malmesbury

**Fencing, hedge  
cutting, clearance  
& other work considered**



**Fully insured**  
**07810 136778**



## HMH CONTRACTING LTD

General Builders

Tel 01666 841412

Email [info@hnhbs.co.uk](mailto:info@hnhbs.co.uk)

- \*Extensions
- \*New Builds
- \*Kitchens
- \*Bathrooms
- \*Listed Buildings and Renovations
- \*Architectural Design and Planning Service

**COMPLETE BUILDING SOLUTIONS FROM START TO FINISH**

In Association with Partridge Architectural Services 07833433872  
 Email [drawings@partridgehouse.co.uk](mailto:drawings@partridgehouse.co.uk)





# News from the Gauzebrook Group

The summer holidays are upon us, and for many the pattern of life changes. I'm very grateful to our ministry team and volunteers who are keeping the full rhythm of services and pastoral care running during the summer months.

Joel has completed his two years of training and will be leaving us to serve as youth and families worker in Fishponds Baptist Church. We will wish him well for the future at a service in Sherston at 9.30am, and in Hullavington at 11.00am, on Sunday 29 July. The Hullavington service will be followed by lunch and a presentation.

We hope that a new youthwork trainee will be able to join us and take forward the work Joel has done. There are thriving groups – a church youth group in Hullavington on Sunday evenings, an open youth group in Luckington Village Hall every Saturday evening, and a Christian Union in Malmesbury Secondary School. Could you support our Youth Ministry by offering accommodation for our new youth worker? A room with bed, desk and chair will be needed from mid-September until the end of July 2019. The worker will do all their own washing and would be expected to help around the house. An allowance for food of £25.00 a week is paid to the host family. During the year, the worker will be away for six weeks for training and also for holidays of five

weeks. Please contact Becky on 826626 if you may be able to help and are interested in finding out more.

As we look to a new term, I'm hoping to offer a couple of courses. 'Foundations' looks at the fundamentals of Christian belief – what do Christians believe and why? It is appropriate for anyone who is inquisitive, without assuming that participants have their own faith, or what form it takes. The other series is about 10 sessions looking at Christian Ethics – how moral decisions are made, with real examples. Depending on demand, either course could be offered on a Tuesday, Thursday or Friday evening, or an afternoon session of about an hour and a half. Please contact me on 837522 if you'd be interested in trying either of these explorations.

The Foundations course will also be appropriate for any adults who wish to be confirmed. This year the confirmation will be at 7.30pm on Wednesday 7 November, either in Malmesbury Abbey or St Paul's Chippenham. If any young people (secondary school age) wish to explore confirmation, please let Becky or me know. We will be offering a course in September and October, so it would be good to know as soon as possible.

Christopher Bryan  
Rector

## 'Sherston Brick Club' British Schoolroom

Friday 10th August and Friday 24th August  
from 5.30 to 7pm  
Free entry. All ages welcome.

### Bible Study Group

Monday 13th August and Monday 27th August  
from 8pm in the British Schoolroom

## We're family when family can't be there



For further info  
please contact  
Helen on  
**07458 012 460**

\*10% discount  
for first booking  
in February

- \* Your safe, friendly and reliable companion driving service.
- \* We care about making every journey a pleasure and easy.
- \* In Malmesbury and the surrounding villages for anyone unable to drive or feeling isolated but wishing to remain independent.
- \* Appointments, trips, visits and more.
- \* Up to 4 passengers.

[www.drivingmissdaisy.co.uk](http://www.drivingmissdaisy.co.uk)



**RYALLS**  
Decorating  
& Building  
Supplies

T 01666 825198 | E [sales@ryallsbs.com](mailto:sales@ryallsbs.com)  
[ryallsdecoratingandbuildingsupplies.co.uk](http://ryallsdecoratingandbuildingsupplies.co.uk)

Connect with us: [ryallsid](#) [ryallsd](#) [ryallsd](#)  
[ryallsd](#) [ryallsd](#) [ryallsd](#)

Subscribe to our mailing list  
for the latest weekly offers

## YOUR LOCAL DECORATING MERCHANT. BIG CHOICE, GREAT PRICES!



VISIT OUR DESIGNER PAINT SHOWROOM IN TETBURY

ASK US ABOUT OUR PRICE MATCH

**WITH OVER 20,000 COLOURS ON-SITE  
WE CAN MIX OR MATCH YOUR REQUIRED COLOUR**

Stockists of:

Farrow & Ball

Little Greene

COPPELAND

MYLANDS

Frenchic

Dulux TRADE

JOHNSTONES

OSMO

and many more fine brands

**FREE DELIVERY**

Order by 4pm for free same day delivery. We deliver until 9pm!

\* Based on a radius of 20 miles from GL8 3HW or SN16 0BX and a minimum order value of £25.  
\*\* Terms and conditions apply.

**BRANCHES**

**RYALLS MALMESBURY**  
Unit 1 Park Road Centre  
Park Road, Malmesbury  
SN16 0BX

**RYALLS TETBURY**  
Priory Industrial Estate  
London Road, Tetbury  
GL8 8HW

**HOURS**  
Monday - Friday 7am - 5pm | Saturday 8am - 1pm

# Malmesbury Concert Band's autumn programme



Malmesbury Concert Band (MCB) has given four performances so far this summer which, with its regular Friday evening practice, will help preparation for its autumn programme, culminating in its annual Musical Extravaganza on 29 October.

The programme includes:

- Sunday 9 September: John Coles Park, Chippenham, 3.00pm-5.00pm
- Saturday, 29 September: Birdcage Walk, Malmesbury, 11.00am-12.30pm
- Saturday 29 October: Musical Extravaganza, Town Hall, Malmesbury, 7.15pm-9.15pm
- Sunday 11 November: Remembrance Service, Malmesbury Abbey, 2.00pm-4.00pm

MCB Director of Music Tony Fleming said: 'We have been rehearsing a number of new pieces this year which, with our existing repertoire, have been very popular with our audiences. We hope that many local music lovers will come and hear us, especially at the Extravaganza on 29 October.'

MCB is a concert wind band with around 25 playing members. Subject to vacancies, it's always happy to welcome new playing members and to receive requests to play at events in the local area.



### Optimum Mobility

**Also walking aids, bathing & household aids**

The Old Dairy, Pinkney Park, Near Sherston  
**01666 840060**  
[www.OptimumMobility.co.uk](http://www.OptimumMobility.co.uk)



**PHYSIO EXCELLENCE**  
PHYSIOTHERAPY AND SPORTS INJURIES

## Private physiotherapy clinics at Sherston and Malmesbury doctor's surgeries with no waiting list

Experienced in the diagnosis and treatment of:

- All aches and pains, back, neck and joint problems
- Knee and hip replacement
- Shoulder rehabilitation
- Sports injuries
- Hydrotherapy (Nr Chippenham)
- Children, teenage and adult posture

Advice as to whether you need an MRI, XRay or consultant referral.  
 Recognised by all major insurance companies. No GP referral needed for self funding patients

**For an appointment please call:**  
**01249 730 132**

SHERSTON
LACOCK
CORSHAM
MALMESBURY
CHIPPENHAM

## M.Vincent Windows & Glazing

**For all your glazing needs**  
 Wiltshire & Gloucestershire areas  
 Fast, friendly and efficient service  
 Available at your convenience 7 days a week  
**CALL FOR YOUR FREE QUOTATION**  
**07890 138453 / 01666 460106**  
[enquiries@mvincentwindows.co.uk](mailto:enquiries@mvincentwindows.co.uk)  
[www.mvincentwindows.co.uk](http://www.mvincentwindows.co.uk)

**Feel anxious about your size & want to fit into your nice clothes again?**

**Confused about all the conflicting Health & Fitness advice?**

Call Christina or message "YES" to 07549 935831 & claim your **FREE** "How to get Healthier & become fitter" consultation.

I help you decide what kind/type of exercise to do, whether you need nutritional advice or not & how to fit these things in your life

"I help people move, eat, look & feel better through Physical Fitness, Nutrition & Coaching"



Facebook: C.C. Fitness  
[christinacroftfitness.co.uk](http://christinacroftfitness.co.uk)

[ccfitness4u@gmail.com](mailto:ccfitness4u@gmail.com)  
 Offer ends 28-02-2018





## Do you enjoy singing?

Malmesbury Singers are looking for new members, especially sopranos, to join their 70-strong mixed voice classical choir.

We rehearse on Monday evenings in Malmesbury Abbey and perform two concerts a year with professional soloists and musicians, as well as holding informal summer singing sessions, singing days and social events. Come and join us in Malmesbury Abbey on Monday 3 September when our autumn term begins and see if we are the group for you!

For more information and to contact us, visit our website: [www.malmesburysingers.co.uk](http://www.malmesburysingers.co.uk)

### Do you want to know **YOUR FAMILY HISTORY**

Skeletons in the cupboard,  
convicts, statesmen, rich  
man, poor man,  
beggar man, thief?

We all have them and they  
are hiding there waiting to  
be found.

Let me find them for you.

#### **Beryl Clampton**

Call anytime: 01666 841201  
or 07850 623517  
e-mail: [beryl@clampton.com](mailto:beryl@clampton.com)

### **C.J. GOUGH**

#### **PAINTER & DECORATOR**

**41 The Tartars,  
Sherston,  
Malmesbury,  
Wiltshire  
SN16 0NT**

**Telephone:  
01666 841003**

### **McGILLS** Malmesbury

Chartered Accountants

**At McGills we are committed to providing a high  
quality, straightforward, no-nonsense service,  
aimed at saving you time, money and tax.**

We work hard to meet the highest standards and  
we treat every client with care and professionalism  
in order to deliver on our promise.

**Tel: 01666 823201**



*Great partnerships start here...*



[www.mcgills.co.uk](http://www.mcgills.co.uk)



McGills Malmesbury, 1st Floor The Barn,  
Cross Hayes, Malmesbury SN16 9BE

## North Wiltshire Villages Flower Club

For our June meeting, over 40 members enjoyed a day trip to national demonstrator and NAFAS South West area President Pam Lewis' garden near Devizes. On arrival by coach, we were greeted with coffee before having a tour of the extensive gardens. Following the excellent lunch provided by Pam and her team of helpers, we were treated to a flower demonstration by Pam; this was enriched by her cheerful character and humour. The truly memorable visit ended with tea and cake before our return journey to Crudwell.

### **Future meetings**

Wednesday 15 August: Strawberry Tea at Oakwood Farm, Minety. Gates open 6.30 pm.

Wednesday 19 September: Talk by Piers Lavan from Hortico plant centre/nursery and AGM

Wednesday 17 October: Workshop. (Pot luck)

### **Looking forward**

The club is in the process of organising a trip to Winchester Cathedral flower festival on 5 September. Tickets for the Festival and coach from Crudwell will cost £20 for members and £25 for guests. For more information please contact on the number below.

Flower club meetings take place at Crudwell Village Hall SN16 9HB on the third Wednesday of the month, 7.00pm for 7.30pm (unless stated otherwise). If you enjoy flowers come and join us, visitors and new members are always welcome.

For more information please contact Margaret on 01285 770 639

## Moviola @ Grittleton Village Hall

Grittleton Moviola takes a break in August. We're back on Wednesday 26 September - look out for the autumn programme in the September issue.

Thanks for your support.

Easy to follow yoga classes.  
Contact Jackie for more details.



Grittleton  
Village Hall

Monday  
mornings

Thursday  
evenings

07947 342694 [jadyble@gmail.com](mailto:jadyble@gmail.com)





Affordable, Quality Double Glazing

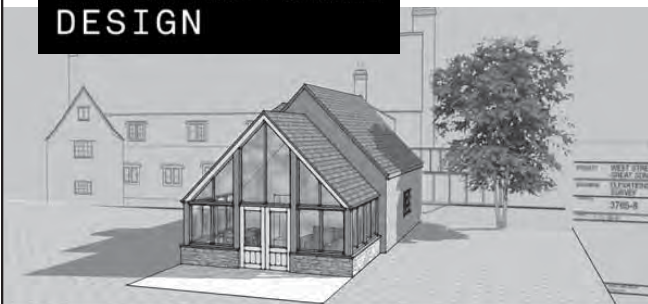
We provide an affordable and quality double glazing service that you can rely on.

- Windows
- Doors
- Replacement Glass
- Repairs and Replacements
- PVCu, Aluminium and Composite Products



**Tel: 01666 840 042 Mob: 07720 717 902**  
[www.sharpeswindowsanddoors.co.uk](http://www.sharpeswindowsanddoors.co.uk)

**SKETCHUP  
ARCHITECTURAL  
DESIGN**



## 3D CAD Models and 2D Drawings



- Design and Visualisation
- Planning Applications
- Building Regulation Drawings

For a free initial consultation contact:

[info@sketchuparchitecturaldesign.com](mailto:info@sketchuparchitecturaldesign.com)

**07814 685 519**

[www.sketchuparchitecturaldesign.com](http://www.sketchuparchitecturaldesign.com)

Pinkney Park. Malmesbury. Wiltshire



Allington Bar Farm,  
Chippenham, SN14 6LJ  
Tel: 01249 658112

Open 7 days 9am – 6pm  
Mon – Sat  
& 10am – 5pm on Sundays.

## Quality Local Produce

**Home produced Pork, Lamb, Beef & Goat**

Home Made Sausages & Burgers

Local Free Range Poultry

**All available daily from our Butchery**

**Locally made Preserves, Chutneys & Pickles**

Somerset Jersey Organic Milk & Cream

**Local Cheeses & Home Cooked Meats**

Extensive range of local Ice Cream

**Locally Grown Fresh Fruit & Vegetables**

Homemade Cakes & Pies

**and many more local ingredients .....**

**ATWELL  
MARTIN**  
ESTATE AGENTS

Letting and managing  
properties in your area

For a free market appraisal,  
call the lettings experts today  
on 01666 828 944

@AMLettings\_

AtwellMartinLettings



Friendly People, Lovely Homes

[www.atwellmartin.co.uk](http://www.atwellmartin.co.uk)



### Charming House to rent in historic Southern France

16 Rue Montmorency is a charming three-bedroom town house located in the heart of Pezenas, a beautiful medieval market town. The house can accommodate 6 people comfortably and was built in the 18th Century. Constructed from ancient stone (probably from the neighbouring castle ruins!) it comes complete with authentic touches such as decorative wrought iron railings and sky blue wooden shutters which are a decorative theme running through Pezenas.

#### Light and airy with stunning views

Number 16 is situated on the apex of a row of town houses, and so has light on three sides as well as a roof terrace with stunning views over the old town and Languedoc countryside. Rue Montmorency is a stone's throw from the bars and bistros of the vibrant old town.

Please see the website for more details [www.realsouthoffrance.co.uk](http://www.realsouthoffrance.co.uk)

Or call Jennie Lamont on 07985443863

Quote Cliffhanger on any enquiry

### Grays of Sherston

01666 840728

5 Church St, Sherston, Malmesbury SN16 0LR



MOT's, servicing and advice  
Tyres, air conditioning and tow bars.  
Our friendly, professional village garage.

**01666 840728** Local quality car care

## Bailey Cars



Your new local private hire service

- Local journeys
- Airport transfers
- Weddings
- Business travel
- Cotswold tours
- Nights out

Choose from a spacious 7 seater MPV to the **comfort** of a 7 Series BMW. We provide **reliable** rates and our drivers will ensure your **safety** on every journey

**Book Now: 07500 416 416**

[www.baileycars.co.uk](http://www.baileycars.co.uk)



### TALLY HO TRAILERS

#### Horse Trailers

New and Used  
Sales –Service –Repairs  
Van Fautras – Cheval Liberté  
– Ifor Williams

[www.tallyhotrailer.co.uk](http://www.tallyhotrailer.co.uk)

tel: 01666 841149  
or 01452 814152

### McTimoney Chiropractic Tolsey Surgery, Sherston

A gentle & effective treatment for  
back, neck & shoulder pain,  
migraines, sports injuries & more

Emma Newby BSc MMCA

01666 841 402

[www.mctimoneychiro.co.uk](http://www.mctimoneychiro.co.uk)

### MAN FOR ALL SEASONS

*WILL UNDERTAKE  
ALL HOUSE/GARDEN  
MAINTENANCE  
NO JOB TOO SMALL*

*From  
CUTTING HEDGES,  
WEEDING THE GARDEN  
& CUTTING DOWN TREES  
To  
PAINTING & SMALL JOBS  
IN THE HOUSE*

*ALL MACHINERY PROVIDED  
- LOG SPLITTER AVAILABLE*

**01666 825463**

Handmade curtains  
Roman blinds  
Roller blinds  
Interior accessories  
Upholstery  
Gift shop  
*...and more!*

*Lucy Tom*  
INTERIORS

LucyTom Interiors, Noble Street, Sherston SN16 0NA  
**Showroom:** 01666 841433  
**Mobile:** 07813877509 **Email:** [lucy@lucytom.com](mailto:lucy@lucytom.com)  
[www.lucytom.com](http://www.lucytom.com)

# Groups and Regular Events in and around Sherston

## Holy Cross Church

**The Coffee Shop** - Fair Trade tea and coffee with homemade biscuits, biscuits and brownies - Open Thurs 9.30 am – 12 noon till Easter then Tues, Wed & Thur till Autumn - with homemade cake too

**Sunday services** 1st and 4th - Holy Communion, 2nd Worship Together - a service for all age groups preceded by breakfast at 9am, 3rd - Family Service preceded by breakfast at 9am See the Parish Life for more details

**Mustard Seeds** is a club for children aged 4 and over, from 10am – 12noon twice a month. Contact Becky Fisher 07974 030212 or becky.fisher@deanery.org.uk.

**Congregational Church** - In the British School Room, Services 1st each week, led or hosted by Reverend Andrew Williams Tarling, Sunday School 10.15 – 11am. Bible study alternate Mondays 8pm at BSR/Church, Brick (Lego) Club alternate Fridays 5.30 – 7pm Contact awtcharfield@hotmail.co.uk or 07921 390878 or find us on facebook. Admin - Victoria Meheust sherstoncongregchurch@outlook.com Sec. - clementsmary@btinternet.com or 07778 934742

**Methodist Church** Services every Sunday at 10.30am apart from 3rd Sunday in the month when service is held at Luckington. For further details see the Parish Life

## Gauzebrook Church for Children

Children are welcome at all the services which are held in the Gauzebrook Group churches but there are some occasions which are particularly for them: **Junior Church** is held at Court House, Hullavington. This is for children from 3 to 11+. Any children under 3 need to be accompanied by an adult.

Contact Becky Fisher 07974 030212 or becky.fisher@deanery.org.uk

**Little Lights** Every term time, Fri 10am in Hullavington church. Children aged 0-5 and their parents/carers come from across the Group, including Sherston, for songs, crafts, activities, Bible stories and snack time. Any questions, contact Chantal on 837522

## Easton Grey Parish Church

See Parish Life for details of services

**Link** provides a voluntary car service for residents living in the Malmesbury area, taking those in need to hospital, the chiropodist, GPs' surgeries and to visit sick relatives. For further information, prospective volunteers can contact the Link co-ordinator and volunteer support officer on 840861 9am-1pm

## Ancient Order of Sherston Mangold Hurlers

Why not join us and discover the joys of mangold hurling and all its traditions? For further information email ebeplaced@aol.com.

**Ashtanga Yoga class** Strength, flexibility, realign. Fridays 10.30-11.15 11.45am in the village hall. More info – Stuart 07986 003602 or www.pulse4life.co.uk or stuart@pulse4life.co.uk

## Carer Support Wiltshire - Monthly carers café

4th Thursday each month 10.30am – 12pm at the Kings Arms Hotel, Malmesbury - come along to chat with other carers over a hot drink or two. CSW is a charity with a team of support workers who can provide information and support to carers living in Wiltshire, by phone or face to face, along with counselling and advice relating to your role. Free and confidential for anyone aged 18+. CSW offers the chance to have a break through social cafés, days out, activities, craft groups and complementary therapies. More details or to register for some support, visit www.carersinwiltshire.co.uk, email info@carersinwiltshire.co.uk or freephone 0800 181 4118 (01380 871690 from a mobile).

**Castle Combe Colts Football Club** Join a charter standard club with CRB checked FA qualified coaches, fantastic playing & training facilities and a healthy inclusive culture – take a free 4 week taster session. Currently recruiting for the following age groups: Mini-Kickers (Rec/Y1) U10 (Y5) U11 (Y6). Tel 837286 or secretary@cccfc.co.uk www.cccfc.co.uk

**Church bell ringing** Practices are every Wednesday 7.30 – 9pm. Call Geoff Martin 840375 or come along.

**Dance classes at The Scout Hut** Fun and friendly classes for children to learn ballet and/or jazz on Tuesday afternoons during term time Preschool/infant ballet 3.30 – 4pm, Jazz 4 – 4.30pm. Junior ballet 4.30 – 5pm, Jazz 5 – 5.30pm All abilities welcome. For more information please call Abigail on 07720 396195.

**Drawing Classes in Sherston** Classes are held in the British Schoolroom during term times Weds either 10am to 12noon or 1.30 to 3.30pm. Students have individual attention and the classes are friendly and welcoming. We work on observational drawing in a range of media, pencil, watercolour crayon and pastel; subjects include plants and flowers, natural objects and still life groups. For further information please contact Heather Martin heather@geoffmartin.plus.com or phone 840375

**Eudo Tae Kwon Do** Thursdays 7-9pm in Sherston primary school hall. For details contact Simon Penfold 824773.

**Footpaths group** 'Sherston Walks - a guide to local rights of way', featuring 10 local walks and is now on sale at the post office. If you would like to learn more about the footpath group and perhaps take part in some of its activities please come along to a meeting. For further information contact Maggie Harries on 841047 or maggie@harriespartnership.com Now online @ www.sherstonwalks.org.uk

## Forest School Club

Weekly outdoor activities during term time at both Sherston and Luckington School and further fun extended sessions during school holidays. For further information please contact nikiwalden-forestschool@hotmail.co.uk

**Fresh Air Fitness** Total body outdoor workout on Sherston Rec Mondays and Fridays 9-10am. Info: www.pulse4life.co.uk Stuart 07986 003602

**Hogwards** The Help a Hedgehog Hospital charity has a satellite hospital in Tetbury. Mary Hinton 07779 299224 www.helpahedgehog.org

**Ingleburn Trefoil Guild** Meets on the 3rd Monday of the month, usually at St. Mary's School Tetbury at 7.30 p.m. Lifts are available for non-drivers in the Sherston/Malmesbury area. Details from Helen Price, 503187 or retreatcottage17@btinternet.com

**Luckington Pre-School** A well-established Montessori inspired Pre-School, for 2½ to 5 years old. Mon-Fri 9am-1pm, during term time. Government funding available and childcare vouchers welcome. For more information, call 840028, email chair@luckingtonpreschool.org.uk or visit www.luckingtonpreschool.org.uk

## Malmesbury Area Board Meeting

For details see www.wiltshire.gov.uk/areaboard

**Malmesbury Concert Band** Rehearsals on Fri evenings in Malmesbury, 7.15 – 9.15pm. The band performs at local Bandstand. For further details and to ascertain current vacancies see our website www.freewebs.com/malmesburyconcertband/ and/or contact Tony Fleming, the Musical Director, on 575229 or tony@jacfleming.plus.com

## Malmesbury Community Choir

The Malmesbury Community Choir is a non-audition performing choir that meets for rehearsals in the Old School Room at the Town Hall every Monday evening from 7.30-9.30pm. The waiting list is currently full for ladies, but we would always welcome extra men and young people between 14-21 years old. Membership is £50 per quarter, but membership for U18s is free and U21s is half price. For further information please email info@malmesburycommunitychoir.org, visit the website at www.malmesburycommunitychoir.org or www.facebook.com/MalmesburyCommunityChoir.

## Malmesbury Embroiderer's Guild

The local branch holds monthly meetings at Little Somerford Village Hall. On alternate months there are Saturday workshops on a wide range of topics, and on the intervening dates there is a Tuesday evening talk at 7.30pm. We always welcome newcomers and occasional visitors, although prebooking is essential for the workshops. Just turn up for the talks – non members £5.

For further information please phone Heather Martin 840375 or www.malmesburyembroiderers.blogspot.com

**Malmesbury Luncheon Club** Over 60s meet every Wednesday at midday in the Wesleyan Room of Malmesbury Town Hall for a chat and a 2 course lunch followed by tea or coffee. £3.50. Please call Helen Churchill on 840080 if you'd like to attend. New members most welcome. Volunteers also needed to prepare and serve lunch, no washing up.

## Malmesbury Film Society

Memorable new, classic and foreign films are shown at 7.30pm every 3rd Sunday of the month at St. Mary's Hall, Malmesbury - no booking or membership necessary. Join us for unique films and an enjoyable evening out. See our website www.malmesburyfilmsociety.org.uk for details on all upcoming films.

## Malmesbury Villages Community Partnership

For details contact Woody Allen 390110 mark.allen@allencan.co.uk

## Malmesbury Rainbows, Brownies & Guides

For details contact the Division Commissioner at malmesbury@wncounty.org.uk

**Malmesbury Rangers** Girls over 14 meet every 2nd Thurs in the month. Further details from Gill Shaw on 825647 or email sgshaw@orchardshaws.co.uk



## North Wiltshire Villages Flower Club

Meets at 7.30pm on the 3rd Wed evening at Crudwell Village Hall. Members come from the surrounding villages to hear speakers and enjoy floristry demonstrations and do workshops and competitions. Further details call Margaret Stanford on 01285 770 639

## Parish Council Meeting

Takes place on the 2nd Thurs each month at 7.30pm in the village hall. Minutes of meetings can be read online at [www.sherston.org.uk](http://www.sherston.org.uk). Further details contact Donna Ford on 07790 883503 or [clerk@sherston.org.uk](mailto:clerk@sherston.org.uk)

## The Rattlebone Boules League

Consists of 48 teams playing in 3 Leagues. Contact Tony Towle on 840574.

## Red Bull Inn Boules

Friendly boules club at the Red Bull Inn (Malmesbury Rd) - meets every Thurs at 7.15pm - any level. For the more competitive members, there is a team playing in the Cotswold Pétanque league. To enter, please contact Sue McKechnie on 840601 or [susannemckechnie@hotmail.com](mailto:susannemckechnie@hotmail.com)

## Rotary Club of The South Cotswolds

Meets at The Horse Guards Inn in Brokenborough each Mon at 7pm, with dinner served at 7.30pm. Visitors are always welcome to our meetings, as are guests and anyone interested in Rotary and in helping the local Community. Further details at website [www.rcsc.co.uk](http://www.rcsc.co.uk) or from Ian Pegg on 840986.

## Senior Club

Meets at 2.30pm during summertime in the British School Room, more details call Helen Quirk 840516.

## Sherston 1016

Fundraising for local good causes and charities. Contact [sherston1016@gmail.com](mailto:sherston1016@gmail.com) or Martin Jacques 07717 424619

## Sherston Baby and Toddler Group

The group is a fun way for babies, toddlers and their parents to meet and play. Meets at 10 -11.30am each Tues in the British School Room with toys for all stages from wrigglers to toddlers, craft activities, music and snacks for all and a cup of tea/coffee for the deserving parent. For further details contact, [sherstontoddlergroup@gmail.com](mailto:sherstontoddlergroup@gmail.com) or like us on Facebook for regular updates [www.facebook.com/sherston.toddlers](http://www.facebook.com/sherston.toddlers)

## Sherston Badminton Club

We play every Tues evening from 7.30pm in the Village Hall from Sept to the end of May. New members welcome - mixed ages (over 18) and abilities. For more information contact David Boyle 841587 or email [djboyle@hotmail.com](mailto:djboyle@hotmail.com)

## Sherston Brownies

Meet every Weds and Thurs during term time 5.45 - 7pm in the Scout Hut. All girls are welcome to join after their 7th birthday, but there is a waiting list. Visit [www.girlguiding.org.uk](http://www.girlguiding.org.uk) and follow the parents link to register your interest, for all other queries contact Tawny Owl (Nicky) at [nicky.gray@btinternet.com](mailto:nicky.gray@btinternet.com)

## 1st Sherston Cub Scout Pack

Membership of the Cub Pack is open to those between 8 and 10 ½ years old. The Pack has regular meetings on Fri nights in term times from 6.30pm to 8pm. There is a waiting list for Cubs, and those interested should email [sherstonscubsandscouts@gmail.com](mailto:sherstonscubsandscouts@gmail.com) to obtain an application form

## 1st Sherston (John Rattlebone) Scout Troop

Is open to young people from the village and surrounding parish from the ages of 10 ½ to 13 ½. We meet at the Scout hut on Tues nights from 7pm to 9pm during school term times. To join contact Riaan van Rooyen [riaan@pulse-software.co.uk](mailto:riaan@pulse-software.co.uk) There is currently a small waiting list to join.

## Sherston Whitewall Explorers

You don't need to have previously been a member of scouts or guides to join us, just be aged between 13 ½ and 18 and free between 8.30 and 10pm on a Fri night during term time; for further information please contact Darren Walsh - 841043 or Ewan Blair - 840096 - [whitewallexplorers@googlemail.com](mailto:whitewallexplorers@googlemail.com)

## Sherston Drama Group

The Drama group puts on plays and pantomimes in the Village Hall. If you are interested in taking part or helping out contact Sue Lehrer (Chairperson) [lehrer.sue@icloud.com](mailto:lehrer.sue@icloud.com) or 07780 661830

## Sherston Town FC

The club play in the Stroud league at Knockdown Park on Sat afternoons - spectators and new players welcome. Contact Pete Brock on 07912 777647 or [peter.brock666@btinternet.com](mailto:peter.brock666@btinternet.com)

## Sherston Magna Cricket Club

Junior nets Mondays 6pm and Senior nets at 6.30pm on Tues nights at Pinkney Park. If you would like to get involved with local cricket please email [cricket@sherstonmagnacc.co.uk](mailto:cricket@sherstonmagnacc.co.uk) or visit the website [www.sherstonmagnacc.co.uk](http://www.sherstonmagnacc.co.uk)

## Sherston Netball Club

Training every Mon 7.30pm at Westonbirt Leisure Centre. All ages and abilities welcome. £3 per session. For more info, please contact, Lauren (07885 597429), Saara (07739 552336) or Kate (07792 064438).

## Sherston Community Choir

The community choir with conductor Trudi Baker meets at 7.30pm each Wed in term time in the British School Room. £3 per session. All welcome. Further information from Sheila Cutcher [sheilacutcher28@gmail.com](mailto:sheilacutcher28@gmail.com) or 840067, or on Facebook.

## Sherston Photography Forum

A monthly group has formed in Sherston for anyone with an interest in photography 2nd Tues of each month at 7.30pm in the Village Hall. For details call Nick Holland on 841019 or [nholland63@btinternet.com](mailto:nholland63@btinternet.com)

## Sherston Pilates

Daytime and evening classes held in the village hall. Run by Saara Sharman, Chartered Physiotherapist. All ages and abilities welcome. For more details contact Saara on 07739 552336 or [sherstonpilates@gmail.com](mailto:sherstonpilates@gmail.com)

## Sherston Tennis Club

The tennis courts are located on Knockdown Road, open to all over the winter. Children's Sat am coaching will start after Easter. If you would like to be emailed with details nearer the time, please contact Sophie Cheetham on 07786 990045 or [sophcheetham@gmail.com](mailto:sophcheetham@gmail.com). If you're interested in joining the club or using the courts, please contact Nic Riley on 840682 or [nic50riley@gmail.com](mailto:nic50riley@gmail.com).

## Sherston Theatre Club

Excursions with a Sherston High Street-to-venue return coach service. Annual fee £20. Listings under [www.communitate.co.uk/wilts/sherstontheatreclub/](http://www.communitate.co.uk/wilts/sherstontheatreclub/) or contact Helen Quirk on 840516 or [helenandjim@thequirks.plus.com](mailto:helenandjim@thequirks.plus.com)

## Sherston Velo

A cycling club formed of enthusiastic road cyclists from Sherston and the surrounding area. There are regular rides each weekend morning with a fast paced group leaving first for an hour, followed by a longer club run. For membership and other information about the club, visit the website [www.sherstonvelo.cc](http://www.sherstonvelo.cc) or email Mark Walsh at [secretary@sherstonvelo.cc](mailto:secretary@sherstonvelo.cc)

## Sherston Village Hall

Available for hire by all. Ideal for meetings, events, parties etc. For details Chris and Tony Weedon 841377 or email [dogleg3@gmail.com](mailto:dogleg3@gmail.com)

## Sherston W.I.

Meetings on first Thurs of month Mar - Sept in the Village Hall (except Apr due Spring Play) at 7.30pm and Nov/Dec/Feb in the British Schoolroom at 2.30pm. No meetings but celebration meals Oct and Jan. Visitors always most welcome £3.50. Further information: Secretary 840578

## Sherston Young Craft Group

Every Mon 6.45 - 8.15pm in the village hall (children 9+). £3 (incl all materials) per evening paid in advance of each half term. To join, please contact Minnie Hulme on 841118 or email [hulmessherston@sky.com](mailto:hulmessherston@sky.com)

## Spokan Family

'Support for Parents of Kids with Additional Needs' in Sherston, Malmesbury and villages. A friendly group which meets locally three times a month. All additional needs welcome, but to join you must be the parent or main carer of the child. Contact Fi Picton via [fi.picton@outlook.com](mailto:fi.picton@outlook.com), or join the facebook group, Spokan Family Sherston, Malmesbury + Surrounding Villages.

## Tetbury Camera Club

Meets every Tues evening from Sept to end of May at 7.30pm in The Priory Inn, Tetbury. For more information and current programme visit <http://tetburycameraclub.org.uk/> or call Liz Cooper 840482. Visitors welcome.

## WEA Sherston Arts, Literature and History Courses

The WEA (Workers's Education Association) offers courses on the Arts, Literature and History in the British School Room, Cliff Road. For more information or to book a place contact Warwick or Pat Jones on [warwickandpatjones@gmail.com](mailto:warwickandpatjones@gmail.com)

## Village Hall 300+ Club

For an annual subscription of only £6, give yourself the opportunity of winning a cash prize in every monthly draw whilst supporting the Village Hall. If you would like to join, or need more information, contact the coordinator, Lin Prior on 840846.

## Wiltshire Walks

The walk lasts approximately 45 minutes and often ends with a cup of tea or coffee. Further information contact Sarah Sims on [sarah.sims@wiltshire.gov.uk](mailto:sarah.sims@wiltshire.gov.uk) or 07846100233. For a full list of walking groups in Wiltshire please visit [www.wiltshire.gov.uk/getwiltshirewalking](http://www.wiltshire.gov.uk/getwiltshirewalking).

## Yoga for All

Mon evenings 7.45-9.15pm in the village hall. Drop in rate £9 reducing to £7.50 if you take up the course. More details contact Theo 07818 401110 or [theo@wildyoga.co.uk](mailto:theo@wildyoga.co.uk) [www.wildyoga.co.uk](http://www.wildyoga.co.uk)

*If you run a club, society or organisation in Sherston that holds regular events such as the above and wishes to be listed, please supply your details and we will add them to the Regular events list. If you have a particular event then please write a short piece about it and we can include it as an article and put the details in the What's On list for that month.*

# WHAT'S ON

## What's On August 2018

If you're planning a community event in the parish why not let the Cliffhanger have the basic details as soon as possible? Email [info@sherstoncliffhanger.co.uk](mailto:info@sherstoncliffhanger.co.uk) to add the event to this list. Everyone will then know what's occurring in good time and it will help prevent events clashing.

### Sherston

#### Wiltshire Council Mobile Library

In Sherston High St Every fortnight on Saturdays 10.30am – Aug 11 & 25 Sep 8 & 22

For further details call [clerk@sherston.org.uk](mailto:clerk@sherston.org.uk) or [mobilelibraries@wiltshire.gov.uk](mailto:mobilelibraries@wiltshire.gov.uk)

#### The Angel Hotel

Upcoming Gin Finals Tasting Evening

Friday 5th October

Tickets on sale now from The Angel or Balcony House Cellars or contact [neil@balconyhousecellars.co.uk](mailto:neil@balconyhousecellars.co.uk) / [dave@sherstonangel.co.uk](mailto:dave@sherstonangel.co.uk) Numbers Strictly Limited

Special Guest Barney Wilczak – master distiller of Garden Tiger  
Check Facebook, boards for more details of events, call 841627, email [contact@sherstonangel.co.uk](mailto:contact@sherstonangel.co.uk) or visit [www.sherston-angel.co.uk/](http://www.sherston-angel.co.uk/)

#### The Carpenter's Arms

Check boards for details For further details call 840665 or visit [www.facebook.com/carpenters.armssherston](http://www.facebook.com/carpenters.armssherston)

#### The Rattlebone Inn

Monday Quiz Nights Every Monday at 7:30pm Free entry and prizes for the winning team

Check boards for more details of events, call 840871, follow on Twitter or visit [www.therattlebone.co.uk](http://www.therattlebone.co.uk)

#### Church events

Gauzebrook Holiday Club 9.30am to 3.30pm Please contact Becky on 826626 or [becky.fisher@deanery.org.uk](mailto:becky.fisher@deanery.org.uk)

For further details call Rev Christopher Bryan 837522 or [Christopher.bryan123@btinternet.com](mailto:Christopher.bryan123@btinternet.com) or twitter @chrisbryanrev // blog <http://revchristopherbryan.wordpress.com/> Rev Susan Harvey 840696 or Susan Harvey [susan.harvey055@gmail.com](mailto:susan.harvey055@gmail.com)

### Sherston Market

In aid of Village Hall repairs Local crafts and produce which vary each market - 2nd Saturday in the month All stall fees will now be going directly into the Village Hall Renovation Fund.

Free charity table in entrance 10am-4pm

Sat 11 Aug Emma's Kitchen will be doing Vintage Teas consisting of sandwiches, scones and jam and cakes and a pot of tea all served on pretty china, a special treat in this lovely weather. The Vintage Teas are £12 for 2. There is a picture on The Sherston Market Facebook page. Bookings for this are available, please contact Emma on 07979 833823. The usual bacon and breakfast rolls and drinks will still be available.

Sat 8 Sep

For further details call Alison on 07909 737096 or [pollyatkins59@btinternet.com](mailto:pollyatkins59@btinternet.com)

### Sherston WI Talks

Talk by Paul Evans - 'Poems and Monologues' 2 Aug, 7.30pm, Village Hall

Talk by Charlotte Mortimer - Wiltshire Air Ambulance 6 Sept, 7.30pm, Village Hall

For further details call Jill Woodward 840578

### Sherston's Inaugural Jigsaw Festival

Fundraiser in aid of the Village Hall repairs Sherston's fabulous jigsaw festival is gathering pace. Over 400 puzzles already made up and looking amazing. Choose your favourites and they will be boxed up for you to take home. £1 admission, accompanied children free of charge. Super raffle with lots of prizes. All proceeds to improve facilities in the Village Hall which for so many years has played such an important part in our community August Bank Holiday 25, 26 & 27 Aug Village Hall

For further details call Marion on 841147 or Lin on 840846

### Sherston Senior Club

"Estates and toyboys" talk by the Cooperative Society 7-Aug British School Room

Half - day Mystery tour free to members visitors £10.00.

Details will be on the posters or contact Helen Quirk 840516 21-Aug

For further details call Helen Quirk 840516 Please contact Pearl Dyer 01666 840619 to reserve a place on the outings

### Sherston Magna Cricket Club

All of the junior and adult fixtures for the 2018 season are now available on our website!

League fixtures on <http://sherstonmagnacc.co.uk/matches> Pinkney Park Ground

For further details call [cricket@sherstonmagnacc.co.uk](mailto:cricket@sherstonmagnacc.co.uk) or visit <http://sherstonmagnacc.co.ukk>

## Perfectly You

Cosmetic Injections

Treatments that help soften the fine lines and wrinkles on your face:

- ☆ Free personal consultation prior to undertaking any procedure
- ☆ Forehead lines
- ☆ Frown lines
- ☆ Crows feet
- ☆ Treatment for excessive underarm sweating

Dr Pip Pettit BM FRCGP Aesthetic Practitioner, Sherston, Wiltshire Tel: 0796 7007 969 [www.perfectly-you-aesthetics.co.uk](http://www.perfectly-you-aesthetics.co.uk)





## Rural Arts Wiltshire

**Ninebarrow** an excellent folk duo who filled the Village Hall on their last visit so don't miss this one 29 Sep

**The Little Matchgirl** a touching and heartwarming tale for families with children Sun 9 Dec at 2.30pm

**Bookends** all the unforgettable Simon and Garfunkel tunes performed by this top class duo – 26th January 2019.

all the unforgettable Simon and Garfunkel tunes performed by this top class duo 26-Jan-19

Village Hall

For further details call or visit [www.ruralartswiltshire.org.uk](http://www.ruralartswiltshire.org.uk)

## Fun in the Sun

Every Wed from Wed 1- 29 Aug 10am-11.30am Fun in the Sun is a fun, free activity programme for children, delivered by Wiltshire Council's Sports Development team, aimed at providing regular sports sessions for young people Sports provided may change on a week by week basis but will include tag rugby, cricket, football, dodgeball, tennis, rounders, athletics and team activities. With high quality coaching from Bath rugby and Wiltshire cricket. 5-11yrs Recreation Ground

For further details call Sports Development team: Tel: 01722 434437 or email: [sportsdevelopment@wiltshire.gov.uk](mailto:sportsdevelopment@wiltshire.gov.uk) or visit [www.wiltshire.gov.uk/leisure-fun-in-the-sun](http://www.wiltshire.gov.uk/leisure-fun-in-the-sun)

## Knockdown

### The Holford Arms

Live Music every weekend Check boards for more details of events

For further details call 01454 238669 or [info@theholfordarms.co.uk](mailto:info@theholfordarms.co.uk)

## Luckington

### Youth Café

Weekly event for ages 11-16 Saturdays 6-6.30pm Big Questions & Discussions, 6.30-7.30pm Food, games and chill in Luckington Village Hall

For further details Joel Faulkner [joel.p.faulkner@gmail.com](mailto:joel.p.faulkner@gmail.com)

## Westonbirt

### The Arboretum

**STIHL Treetop Walkway** The main walkway is step-free, making it accessible to visitors on foot, using mobility scooters, wheelchairs and pushchairs and to those with dogs on leads. It is 300m long and gradually rises on gentle inclines to a height of 13m. Scramble up to the crow's nest viewing platform; cross the rope bridge; Peer through the mesh-floored section Till Nov 2018 admission prices Adults £10, Concs and those arriving by bike or public transport £7, Children (5-18) £4, under 5s free, 1 carer allowed free per paying disabled visitor

**Specialist Wood Sales** every Sat 10am-1pm in aid of FOWA  
**Secrets of Silk Wood - guided walk** 2pm Every Sat and Sun till 4 Nov Departs the Welcome Building - free after admission - dogs on leads welcome

Westonbirt Arboretum For further details call 880220 or visit [www.forestry.gov.uk/westonbirt](http://www.forestry.gov.uk/westonbirt)

### Ride and Stride

The annual Sponsored Ride and Stride in aid of Wiltshire Historic Churches Trust and your local church Sat 8 Sep 10am-6pm Ride (cycle or horse) or walk to as many churches as you can manage during the day and get sponsorship for doing so. Plan a route that suits your energy levels or get ideas from <http://www.visitwiltshire.co.uk/things-to-do/activities/cycling>.

Last year Ride Stride raised over £51,000 for Wiltshire's churches, and 34 churches benefited from Wiltshire Historic Churches Trust grants, ranging from £400 to £10,000. As

ever, Holy Cross Church, Sherston needs help with ongoing maintenance and repairs. Half of all money raised is shared out to go to the church of your choice, the other half is used by the Wiltshire Historic Churches Trust to award grants to churches with special maintenance needs.

For further details call and sponsorship forms Pam Pickthall on 841072 or [pampickthall@hotmail.co.uk](mailto:pampickthall@hotmail.co.uk) or Charles Graham 01672 514301 or [ctg100@hotmail.com](mailto:ctg100@hotmail.com) or visit [www.wiltshirehistoricchurchestrust.org.uk](http://www.wiltshirehistoricchurchestrust.org.uk)

## Badminton

### The Beaufort Hunt Supporters Show

Dressage and Show jumping Packed schedule Wed 8 Aug - see [www.beauforthuntsupportersclubshow.co.uk](http://www.beauforthuntsupportersclubshow.co.uk)

The Slaits Badminton For further details call Stalls welcome.

For more information and to book a spot e-mail [genevieveminney@btinternet.com](mailto:genevieveminney@btinternet.com)

## Rotary Horseless Team Event

**Rotary 35th Horseless Team Event** Sun 30 Sep Registration starts at 08:30 (on-line pre-registration is available and gets you free car parking; car parking is £5 on the day); the race itself starts at 10am. Adult entries are £15; junior (aged 15 or under) entries are £10. Dogs are allowed but, with so many deer and sheep around, they must be kept on leads at all times. The course incorporates the world famous Badminton Horse Trials obstacles and goes around most parts of the Badminton Estate Park. Runners can enter as individuals or in teams for the half-marathon, 9 or 5 mile categories. Canicross runners can enter for either 9 or 5 miles. Juniors aged 15 or under on 9th October 2017 may enter the 5 mile category.

The event raises money for Rotary Charities and allows runners to seek their own sponsorship for their own charities.

For further details call or visit [www.fullonsport.com/event/badminton-horseless-team-event-2017/profile](http://www.fullonsport.com/event/badminton-horseless-team-event-2017/profile)

## Easton Grey

### Whatley Manor

**Sunday Cinema** £45 includes your cinema ticket for the screening and popcorn and a 3 course lunch or dinner in Le Mazot brasserie. Lunch first from 12 noon with the film starting promptly at 2.30pm. For the dinner screening enjoy the film first starting promptly at 5pm followed by dinner in Le Mazot brasserie from 7.15pm. 12 Aug – 'A Wrinkle in Time' – Starring Oprah, Reese Witherspoon, Chris Pine. Disneys live action A Wrinkle in Time. After the disappearance of her scientist father, three peculiar beings send Meg, her brother, and her friend to space in order to find him. 30 Sep – 'Oceans 8' – Huge cast including Cate Blanchett, Matt Damon, Sandra Bullock & Anne Hathaway. Debbie Ocean gathers a crew to attempt an impossible heist at New York City's yearly Met Gala.

**Hospitality Action's annual polo day at Beaufort Polo Club** Sun 9 Sep - in aid of Hospitality Action Tickets are priced at £105pp to include: Champagne on arrival, Three-course gourmet lunch with wine, Grandstand seat, Afternoon cream tea, Car passes and an event programme

For further details call 834026 or visit [www.whatleymanor.com](http://www.whatleymanor.com)

## Doughton

### Highgrove Garden Tours

Tickets on sale for all tours. Standard Tours: £27.50 per person, individuals join a group of 26 guests. Groups may pre book Lunch or Afternoon Tea after their garden tour. Please note that an administration fee of £1.50 is applied to all bookings. More exclusive tours available - see website

For further details call 020 7766 7310 or visit [www.highgrovegardens.com](http://www.highgrovegardens.com)

## Malmesbury

### Movies@Malmesbury

Movies@Malmesbury is run entirely by volunteers. If you would like to help out with the running of Movies@Malmesbury please see a member of the staff at the end of a screening or email us [ghcooke@hotmail.com](mailto:ghcooke@hotmail.com). A limited range of drinks and snacks are available for purchase at the bar adjacent to the cinema. A few cushions are available for use during M@M programmes. Please ask for one, remember availability is limited so arrive early if you want one! There is no charge for the cushion. Tickets: 2pm Matinee & 5.30pm screenings: Adults £5. Under 16's £4. 8pm screenings: All tickets £6. Alternative Content (theatre, ballet, opera & art exhibitions) all tickets £10

This month's films include:

|                    |         |                                       |
|--------------------|---------|---------------------------------------|
| Monday, 6 August   | 2:00 pm | Mary and the Witch's Flower           |
| Monday, 6 August   | 8:00 pm | Ocean's 8                             |
| Tuesday, 7 August  | 2:00 pm | Nothing Like a Dame                   |
| Tuesday, 7 August  | 7.30pm  | Andre Rieu in Concert at Maastricht * |
| Friday, 10 August  | 2:00 pm | Ocean's 8                             |
| Friday, 10 August  | 8:00 pm | Soldado: Sicario 2                    |
| Friday, 17 August  | 2:00 pm | Soldado: Sicario 2                    |
| Friday, 17 August  | 8:00 pm | Mary Shelley                          |
| Monday, 20 August  | 2:00 pm | Mary Shelley                          |
| Tuesday, 21 August | 2:00 pm | Andre Rieu in Concert at Maastricht * |

|                      |         |                               |
|----------------------|---------|-------------------------------|
| Monday, 3 September  | 8:00 pm | The Happy Prince              |
| Friday, 7 September  | 2:00 pm | Mission Impossible 6          |
| Friday, 7 September  | 5:30 pm | Incredibles 2                 |
| Friday, 7 September  | 8:00 pm | Mamma Mia! Here we go again   |
| Wednesday, 12 Sept   | 2:00 pm | Mamma Mia! Here we go again   |
| Wednesday, 12 Sept   | 7:00 pm | RSC: Merry Wives of Windsor * |
| Monday, 17 September | 8:00 pm | Mission Impossible 6          |
| Friday, 21 September | 2:00 pm | The Happy Prince              |
| Friday, 21 September | 5:30 pm | Incredibles 2                 |
| Friday, 21 September | 8:00 pm | Mamma Mia! Here we go again   |

Malmesbury Town Hall

For further details call Tickets are available at the Town Hall, on the door or online (a booking fee is payable) or visit [www.malmesbury.gov.uk/cinema.html](http://www.malmesbury.gov.uk/cinema.html)

### Events at Malmesbury Library

**Mischief Makers Summer Reading Challenge 2018.** The challenge asks four to 11-year-olds to borrow and read any six library books over the summer. The Mischief Makers theme is inspired by the Beano comic, which is celebrating its 80th anniversary July - 8 Sep

**Children and young people's book festival** With authors and illustrators plus a coding and BBC micro:bits workshop, Paddington Bear activity, Day of the Daleks, creative crafting, Teddy's Summer Sleepover, bookshop and book signings, Bookstart Bear.

30 Jul - 2 Aug 30 Jul 2.30-3.30pm Meet author Guy Bass, 7-11s

Tues 31 Jul 2.30-3.30pm Paddington Bear Activity, 4-7s Wed 1 Aug 10.30-11.30am Meet author Angie Morgan, 4-7s Thurs 2 Aug 11.30-12.30pm Coding for Kids, 7+

2-3.30pm Day of the Daleks, All ages

Malmesbury Library, Cross Hayes

For further details call 823611

### Exhibition:

#### Wiltshire At War

**Wiltshire Does Its Bit** includes many interesting stories of local nurses, dairymaids, small businesses, and local people providing comfort to soldiers of WWI— all doing their bit for the war effort. The museum will also have a display commemorating local soldiers and sailors who lost their life on the Somme and Jutland free entry Open Summer: Mon to Sun 10.30am to 4.30pm Winter (from Oct to Mar) : Mon to Sat 10.30am to 4.30pm, Sundays: 11.30am to 3.30pm.

For further details call or visit [www.athelstanmuseum.org.uk](http://www.athelstanmuseum.org.uk)

#### Singing for the Brain

**Singing sessions are led by a trained Singing for the Brain leader** Every other Monday 1.30-3pm a free service (funded by Wiltshire council) is designed to be a fun, stimulating and social activity for people with a diagnosis of dementia and their family/friends or carers. For session dates and to book your place please call Pam Ollis at our Chippenham office.

Malmesbury Activity Zone, Bremilham Road

For further details call 01249 443469 or e-mail

[nwils@alzheimers.org.uk](mailto:nwils@alzheimers.org.uk) or visit [www.alzheimers.org.uk](http://www.alzheimers.org.uk)

### Malmesbury & District

#### University of the Third Age

U3A is a unique organisation which provides educational, creative and leisure opportunities for retired and semi-retired people. There are over 400 members and around 40 different interest groups including arts and crafts, book group, history, gardening, dancing, theatre trips, languages, walking etc. U3A meets on the 4th Thursday of the month at Malmesbury town hall from 10- 11.45 for tea/coffee, a chat and to listen to our monthly speaker. Charge 50p

**No meeting in August**

**Richard Ricketts – 'The Amazing Honey Bee'** Thurs 27 Sep Assembly Rooms at the Town Hall

For further details call Membership Secretary Ann Roberts-Phare on 823971 or visit [www.malmesburyu3a.org.uk](http://www.malmesburyu3a.org.uk)

#### Wiltshire Council Sunday Lunch Club

**Monthly get together** for those who'd like some company and a good Sunday lunch Each month 12.30pm for 1pm start. £10.50 pp Transport can be arranged if needed

For further details call Ellen Backer 07557 922020

### Malmesbury, Chippenham

#### Programmes and Activities at

##### The RISE Trust

**FREE Children's Centre activities** The RISE Trust supports many projects in North Wiltshire with 6 Children's Centres in Chippenham, Cricklade, Royal Wootton Bassett and Calne. We provide Children's Centre services for the Corsham

## Ride On Cycles

The Mobile Cycle Workshop That Comes to You

Full range of servicing & repairs carried out by a City & Guilds qualified mechanic.

Contact Andy on:

01454 880872 / 07443333219

[andy@ride-on-cycles.co.uk](mailto:andy@ride-on-cycles.co.uk)

[www.ride-on-cycles.co.uk](http://www.ride-on-cycles.co.uk)



and Malmesbury areas. We also run Youth services, such as mentoring and youth groups, and provide services to the elderly. The RISE Trust started as an initiative from a local church in Chippenham in 2004.

**Seniors' lunches** The Rise Trust Volunteers regularly serve a Community Lunch for Seniors at St Paul's Church Hall, Malmesbury Road, Chippenham at 12pm. This is a great way to make new friends and socialise. For more details please contact Vicky Watt on 01249 445288 or email [vickyw@therisetrust.org](mailto:vickyw@therisetrust.org)

**Youth Club and Youth Café** We run lots of activities for young people in Chippenham including a Youth Club and Youth Café Gemma Matthews 01249 464008 or [gemmam@therisetrust.org](mailto:gemmam@therisetrust.org)  
For further details call 01249 463 040 or visit [www.therisetrust.org/programmesevents/](http://www.therisetrust.org/programmesevents/)

## Wildlife Photography Exhibition

Local Tetbury and Malmesbury photographers Sandie Cox and Tony Banks share a passion for wildlife and nature and are showing a collection of captivating images captured in travels that have taken them from Yellowstone Park in the US to the Masai Mara in Kenya. 14 Jul – 10 Aug - midweek 9am – 4.30pm, Weekends, 10.30am – 4pm  
Malmesbury Town Hall

For further details call Tony on 860656 or 07739 710190

## Malmesbury Carnival

**Malmesbury Carnival month** events include quizzes, historical walks, poetry, music events, bike rides, bat walks, Open Mic night, cheese tasting 2 Aug – 2 Sep Carnival Procession 6pm Sat 1 Sep. Various locations in and around Malmesbury  
Programme on line at

For further details call [enquiries@malmesburycarnival.co.uk](mailto:enquiries@malmesburycarnival.co.uk) or call 823921 or 824361 or visit [www.malmesburycarnival.co.uk](http://www.malmesburycarnival.co.uk)

## Malmesbury Open Gardens

Sun 5 Aug 1-5pm £6 (children free) All Proceeds to the Malmesbury Carnival Good Causes

For further details call [opengardens@malmesburycarnival.co.uk](mailto:opengardens@malmesburycarnival.co.uk)

## Grittleton

### Moviola -

### the Touring Rural Cinema Scheme

Moviola - the Touring Rural Cinema Scheme

Takes a break in August

We're back on Wednesday September 26th Doors open 7pm for 7.30pm start £6 from Lesley or on the door

Grittleton Village Hall

For further details call Lesley 01249 783157 or email

[L\\_palmer@btinternet.com](mailto:L_palmer@btinternet.com) or visit [www.moviola.org/](http://www.moviola.org/)



FOR ALL YOUR LANDSCAPING NEEDS  
MOBILE NUMBER: 07973736912  
EMAIL: [chris.sagegardendesign@gmail.com](mailto:chris.sagegardendesign@gmail.com)  
[sagegardendesign.co.uk](http://sagegardendesign.co.uk)

## Tetbury Goods Shed

**Vegetables from Aunt Addie's** Visit the amazing Ros for all your delicious locally grown vegetables. Adeline Farm is a farming venture with the emphasis on quality, fresh, local and seasonal produce. Although not certified as Organic they are committed to using organic methods – and to working with nature and respecting wildlife. They are also totally committed to producing the finest produce possible. 10am-2pm Adeline Farm Community Project offers facilities to the disabled, people with learning difficulties, and other groups in the Wilts. /Glos. area.

### Check the website for details of events in July

How to reach the Shed - use the sat nav postcode GL8 8EY

For further details call 505496 [info@shed-arts.co.uk](mailto:info@shed-arts.co.uk) or visit [www.shed-arts.co.uk](http://www.shed-arts.co.uk)

## Tetbury Summer & Flower Show

**Grand Parade, Fun dog show, arts & crafts, classic cars**

Entertainment and activity for all the family together with the flower and craft show in the grand marquee Sun 12 Aug.

Gates open at noon, entry prices are Adult £2.50, children 12 – 16 years £1 children under 12 – free Entry forms and instructions for the Flower Show are available on line

Tetbury Memorial Recreation Ground, enter via Hampton St

For further details call [enquiries@tetburyflowershow.co.uk](mailto:enquiries@tetburyflowershow.co.uk) or visit [www.tetburysummershow.co.uk](http://www.tetburysummershow.co.uk)

## Crudwell

### North Wilts Villages Flower Club

Strawberry Tea 15-Aug

Talk by Piers Lavan from Hortico plant centre/nursery and AGM Wed 19 Sep

Trip to Winchester Cathedral flower festival 5 Sept. Tickets for the Festival and coach from Crudwell will cost £20 for members and £25 for guests

Crudwell Village Hall SN16 9HB

For further details call Margaret on 01285 770 639

## Chippenham

### Neeld Community and Arts Centre

**Alice's Adventures in Wonderland** Take a trip down the rabbit hole with Chapterhouse Theatre Company this summer as they present the classic tale of Alice's Adventures in Wonderland. Sat 1 Sep 4pm

Neeld Community and Arts Centre

For further details call 01249 446699 or visit [www.neeld.co.uk](http://www.neeld.co.uk)

## Cirencester

### Cirencester Open Air Swimming Pool

Heated spring water open air pool run by volunteers as a non profit making charity Open Thurs 24 May to Sun 5 Sept. 7/7.30am-6.45pm midweek and 9/10 – 5.45 Sat/Sun. Mon & Wed Adult evening swim 6.45-7.45pm. Friday Youth Evening 7-8.30pm 10-17 year olds Only £1 £4.80 / £3/ Family £13.50  
Season tickets available.

Cirencester Park, GL7 2EF

For further details call 01285 653947 or visit

[www.cirenopenair.co.uk](http://www.cirenopenair.co.uk)

## Wotton-Under-Edge

### The Electric Picture House

A refurbished local cinema run by volunteers from the local community This month: Mamma Mia: Here We Go Again; Incredibles 2; Hotel Transylvania 3: A Monster Vacation; 30 Aug Jonas Kaufmann: Under the Stars; Thurs 6 Sep NT Live: Julie (Live); Wed 12 Sep

RSC Live: The Merry Wives of Windsor; Thurs 13 Sep La Boheme

from Sydney Harbour Bridge; Thurs 20 Sep The Australian Ballet's The Merry Widow check website for details  
The Electric Picture House  
For further details call 01453 844601 or visit  
[www.wottoncinema.com](http://www.wottoncinema.com)

## Hawkesbury Upton

### Hawkesbury Upton 133rd Horticultural Show and Fair

Sat 25 Aug open from 12.30. Hawkesbury Horticultural Show is thought to be the longest continually running Horticultural Show in England, running for

133 years without ever being cancelled for war or adverse weather. Carnival Queen crowned at 1.30pm on The Plain The main attraction is the large produce marquee, full of the biggest & best fruit, vegetables & flowers, home baking, crafts, home made wine & beer, original photographs & pictures – all produced by the local community. Local Beer & Cider Tent, Craft Stalls, Pimms Tent, Refreshments, Hog and Badminton Deer roast, Fairground rides, Tractor pull competition. Nailsworth Silver Band. Dogs welcome on a lead. Pay on the gate or buy advance tickets at The Village Shop or The Post Office, Hawkesbury Upton Adults £5, Senior Citizens £3, Children £2, Family ticket £12 (2 adults + up to 4 children)

- Jez Avery Stunt Driver
- Michael Davie Falconry Display
- Punch & Judy Fun Show
- Tractor pull competition There are also:

- Rogers' fairground rides

- Deer & Hog roast

- Beer & cider tent

- Pimms tent

- Grand Raffle with a fantastic array of prizes

- Archery lessons with the Bath Archers

- Amazing selection of trade, craft & charity stalls Disabled parking in the Village Hall car park - Wheelchair accessible (High Street closed to vehicles 1.15 – 2.00pm)

Village Hall and Recreation Field, High Street, Hawkesbury Upton

For further details call or to book a stall phone 01454 232910 or email: [Vicky@coombeview.com](mailto:Vicky@coombeview.com) or visit [www.hawkesburyshow.org](http://www.hawkesburyshow.org)

## South Cerney

### Gloucestershire Steam & Vintage Show

Fri 3 - Sun 5 Aug Steam Arena, with non-stop steam action, the Main Arena with displays and commentary on the vintage and classic cars, tractors, commercial vehicles, vintage bus and coaches, motorcycles, miniature steam, industrial trucks, emergency vehicles. Advance discounted tickets from Tetbury Tourist office or online. All in aid of local charities

Also on display in the huge showground will be Model aircraft displays, both in the air and on the ground, the Model tent, two Countryside Arenas, with ferrets to shire horses, Vintage caravan display, The Timber arena, where trees turn to tables, also an extensive trade stand area, a Craft marquee, the Specialist Displays area and a huge working Stationary Engine display, a food court and licensed bars, and a vintage fairground. Weather permitting on Sat 1 Aug there will be an aerobatic display and on Sun 2 Aug the Muscle Biplane Aerobatic Display. On both these days parachute display teams are also due to entertain.

Dogs welcome but must be kept on a lead at all times, please clear up after your dog

For further details call 01453 762508 or visit

[www.glosvintageextravaganza.co.uk](http://www.glosvintageextravaganza.co.uk)

## Bath

### Theatre Royal Bath

THEATRE ROYAL BATH plays host to west end productions, premieres and world premieres as exciting new shows are announced for the Spring & Summer Season

Arthur Miller's 'The Price' starring David Suchet and Brendan Coyle 9 - 23 Aug £15-£33.50

God of Carnage 29 Aug - 15 Sep

Prior to the West End: The Height of the Storm starring Jonathan Pryce and Eileen Atkins 18 - 29 Sep

For further details call 01225 448844 or visit

[www.theatreroyal.org.uk](http://www.theatreroyal.org.uk)

PAWS FOR THOUGHT

**PROFESSIONAL DOG WALKING AND MINDING SERVICE**

- Bespoke service for you & your dog
- Experience in handling both large & small dogs
- Fully insured in all aspects of dog care

- Knowledgeable in canine first aid, training and obedience
- Group or individual walks available
- Established & recommended for 6 years

**Animal Minding Service** also available for cats & domestic pets. Animals are happier & more secure in their own environment. Daily visits provided to include feeding, grooming, tlc & medication if required

**Please call Sophie Francis on 01666 840538 or 07531 057016**

References available on request

## STANTON COMPUTER SERVICES

We come to you!

PC repairs  
Upgrades  
Installation of new hardware  
Wired and wireless networking  
Internet and email set up and coaching  
Virus cleansing

Please call Nick Greene on 01666 837850  
Mobile 07887 721396  
Email: [nick@computerfixer.org.uk](mailto:nick@computerfixer.org.uk)

### Venue for Corporate Hire



Offering a stunning building and location, the Great Oak Hall at Westonbirt, The National Arboretum is available for weekday conferences and meetings. Hire includes a complimentary visit on the day of hire. Proceeds to the charity support the future of this national tree collection. For information and rates; [www.fowa.org.uk/venue\\_hire](http://www.fowa.org.uk/venue_hire), 0300 067 3301, [greatoakhall@fowa.org.uk](mailto:greatoakhall@fowa.org.uk)



## Malmesbury, Chippenham, Bath, Stroud, Bristol, Wotton

### National Theatre Live

Live and pre recorded screenings

Julie 6-Sep

King Lear with Sir Ian McKellen 27-Sep

The Madness of George III with Mark Gatiss 20-Nov

For further details call or visit [www.ntlive.com](http://www.ntlive.com)

## Bath, Stroud, Bristol

### Covent Garden Royal Opera House and Ballet @ the cinema

Live and pre recorded screenings of opera and ballet from the ROH Covent Garden

Ballet: Mayerling 15-Oct

Opera: Die Walküre 28-Oct Running time: The performance lasts about 5 hours 50 minutes, including two intervals.

Stroud Apollo, Odeon Bath and many other Cinemas

For further details call 0871 220 6000 or visit

[www.roh.org.uk/cinema](http://www.roh.org.uk/cinema)

## Slimbridge

### Wildfowl and wetlands centre

Landrover Safaris every weekend and daily in school holidays

Canoe Safaris every weekend and daily in school holidays Free after admission

Daily walks, talks and activities

Slimbridge Wetland Centre

For further details call 01453 891223 or email

[eleonor.wise@wwt.org.uk](mailto:eleonor.wise@wwt.org.uk) or visit [www.wwt.org.uk](http://www.wwt.org.uk)

## Gatcombe Park

### Gatcombe Park Horse Trials

The Festival of British Eventing 3-5 Aug 8-5pm see website for details

For further details call 0843 2087455 or visit

[www.gatcombe-horse.co.uk/](http://www.gatcombe-horse.co.uk/)

## Winchcombe

Mid-Summer Vintage Sports Car Club Weekend 4-5 Aug

Every year on the first full weekend in August, over 250 of the finest Pre-war Racing and Sports-Cars descend upon the famous Hill Climb venue near Winchcombe in Gloucestershire – home of the Bugatti Owners' Club – having travelled from all over the world to compete, with representatives from the evocative marques of the period, including Bugatti, Alfa Romeo, Bentley, Aston Martin, Frazer Nash, ERA and more

VSCC Long Course Hillclimb 29-Sep The season finale for the VSCC speed event series held on the Prescott long course.

Prescott Lodge

For further details call 01242 677 777 or visit [www.prescott-hillclimb.com](http://www.prescott-hillclimb.com)

## Long Ashton

### Bristol Balloon Fiesta

Bristol Balloon Fiesta Thurs 9 - Sun 12 Aug Mass launches

Thurs - Sun at 6am and 6pm. Nightglow mass launches on

Thurs & Sat at 9pm Red Arrows display Sun 5pm Free entry - car parking cheaper if bought in advance via the website

Mass ascents daily at 6am and 6pm / Nightglows 9 & 11 Aug at 9.30pm

Ashton Court Estate,

For further details call 0117 953 5884 or visit

[www.bristolballoonfiesta.co.uk](http://www.bristolballoonfiesta.co.uk)

## The Baraka Catering Company Ltd.

[www.barakacatering.co.uk](http://www.barakacatering.co.uk)



Catering for ALL events large & small

Delicious Homemade Canapés

Supper Parties

Gourmet Barbeques

Weddings, Birthdays & Christenings

Please don't hesitate to call Camilla on 07734 251 075

Or email [camilla@barakacatering.co.uk](mailto:camilla@barakacatering.co.uk) with any orders, questions etc.



The Angel

Open every day from 8am  
Breakfast, Lunch, Speciality  
Coffee & Homemade Cakes

Afternoon Tea  
available by booking

Dinner available Thurs-Sat

Contact@sherstonangel.co.uk 01666 841627

High Street, Sherston

8 Bedrooms,  
all en-suite

Private Dining/  
Function/Meeting  
space available

[lacockphotography.com](http://lacockphotography.com)

capture  
magic



Lacock Photography

## EMERGENCY RESPONSE

If you are in immediate danger call 999

The public version of Sherston's Emergency Response Plan can be found on the Sherston website:  
[www.sherston.org/downloads/sherston-parish-council-emergency-plan/Sherston-Emergency-Plan-REDACTED-20-11-2015.pdf](http://www.sherston.org/downloads/sherston-parish-council-emergency-plan/Sherston-Emergency-Plan-REDACTED-20-11-2015.pdf)

### Sherston Emergency Response Coordinator

[emergency@sherston.org.uk](mailto:emergency@sherston.org.uk) (only during an incident)

### Wiltshire Council

Highways, Social Care, Emergency Transport

24hr telephone contact: 0300 456 0100

[EPRR@wiltshire.gov.uk](mailto:EPRR@wiltshire.gov.uk) (only during an incident)

Floods: 0300 456 0105 or [drainage@wiltshire.gov.uk](mailto:drainage@wiltshire.gov.uk)

### Useful Information

Wiltshire Council Online Gritting routes

[www.wiltshire.gov.uk/parkingtransportandstreets/roadshighwaysstreetcare/gritting.htm](http://www.wiltshire.gov.uk/parkingtransportandstreets/roadshighwaysstreetcare/gritting.htm)

### Utilities

ELECTRICITY – SSEPD Power track

To report a problem or for information call 105

[www.ssepd.co.uk/Powertrack](http://www.ssepd.co.uk/Powertrack) for a map of faults

0800 072 7282 or 0345 072 1905 from a mobile phone  
 @SSEPD for updates on twitter

### WATER – Bristol Water

[www.bristolwater.co.uk/contact/](http://www.bristolwater.co.uk/contact/)

Emergency Helpline: 0345 702 3797 (24 Hour)

### WATER – Wessex water

[www.wessexwater.co.uk/Contact-us/](http://www.wessexwater.co.uk/Contact-us/)

Emergency Helpline: 0345 600 4 600 (24 hours)

### BBC Wiltshire can be heard via:

West Wilts area

(Chippenham, Devizes and Trowbridge): 104.3FM

## Useful Numbers

|                                  |                 |
|----------------------------------|-----------------|
| BT fault line                    | 0800 800151     |
| CLARENCE (Highway complaints)    | 0800 232323     |
| Cllr John Thomson                | 01666 840785    |
| Malmesbury Activity Zone         | 01666 822533    |
| Malmesbury Library               | 01666 823611    |
| Malmesbury Police 101            | (emergency 999) |
| Malmesbury Primary Care Centre   | 01666 825825    |
| Malmesbury Secondary School      | 01666 829700    |
| Malmesbury Youth Centre          | 0799 0908550    |
| MP James Gray                    | 01249 652851    |
| Sherston Parish Council          | 07790 883503    |
| Sherston Post Office             | 01666 840456    |
| Sherston School                  | 01666 840237    |
| Sherston Village Hall (bookings) | 01666 841377    |
| Tolsey Surgery                   | 01666 840270    |
| Wiltshire Council                | 0300 4560100    |

## Andrew James QUALITY TRAVEL

Andrew James Quality Travel prides itself on always providing a high level of service, attention to detail for any event or trip and providing perfectly presented, clean and valeted vehicles.

Its team of staff will ensure the success of any occasion, advising and assisting with the arrangements.

Whether you are planning a day out and need a mini-coach or you would like a large, luxurious, executive coach you will always find Andrew James vehicles beautifully prepared and exceptionally clean so that you can settle back and travel in comfort.



Telephone: 01666 825655

Email: [ajcoaches@andrew-james.co.uk](mailto:ajcoaches@andrew-james.co.uk) Website: [andrew-james.co.uk](http://andrew-james.co.uk)

## SHERSTON DRIVING SCHOOL

Michael Holborow A.D.I.

Tel: 01666 840327

Mobile: 07790890978

[mike@sherstondriving.co.uk](mailto:mike@sherstondriving.co.uk)

## FOREVER LIVING PRODUCTS

*Independent Distributor of  
Aloe Vera Based Products*

Improve income or health or both. Products sold, events organised. 60-day money-back guarantee.

Beryl Clampton  
 01666841201/07850623517  
[beryl@clampton.com](mailto:beryl@clampton.com)

**ENQUIRIES WELCOME**