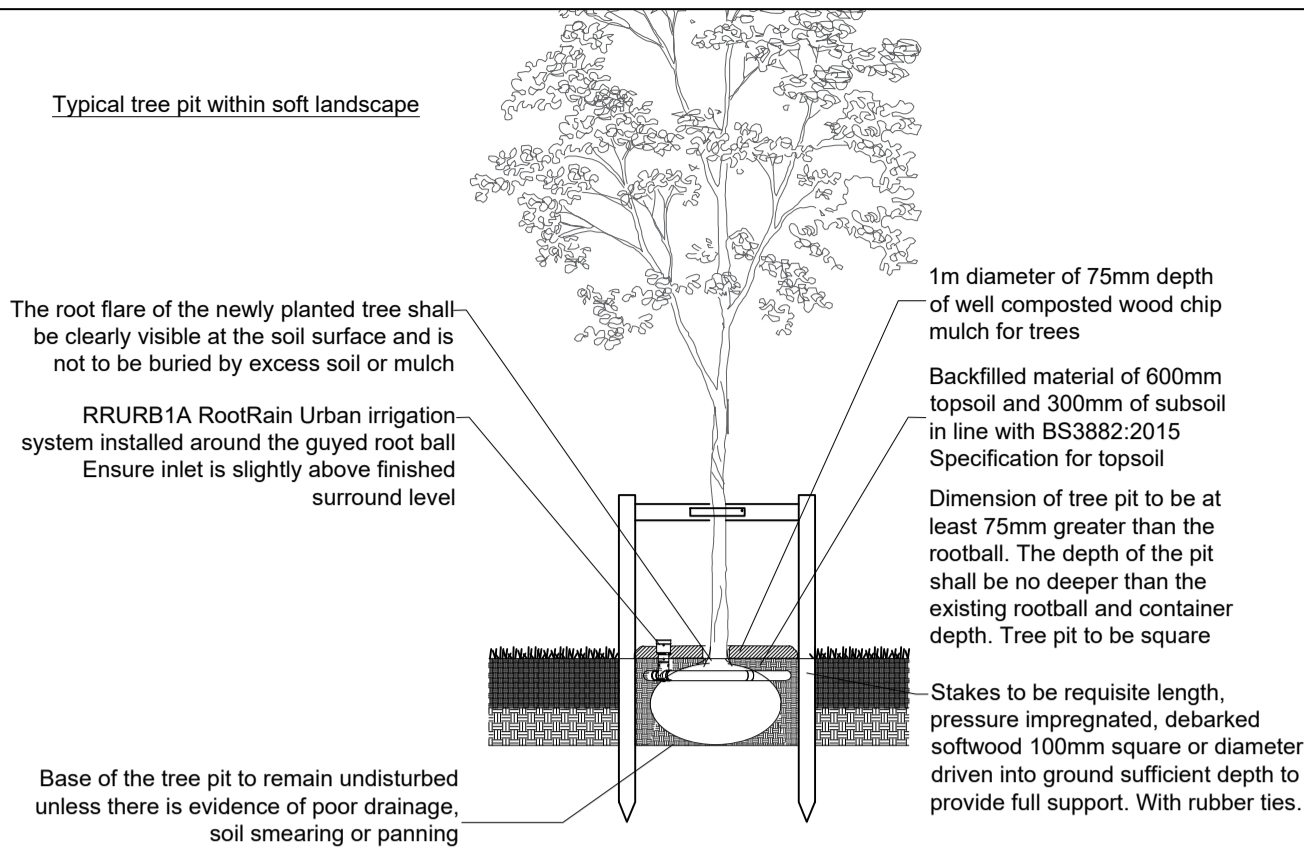
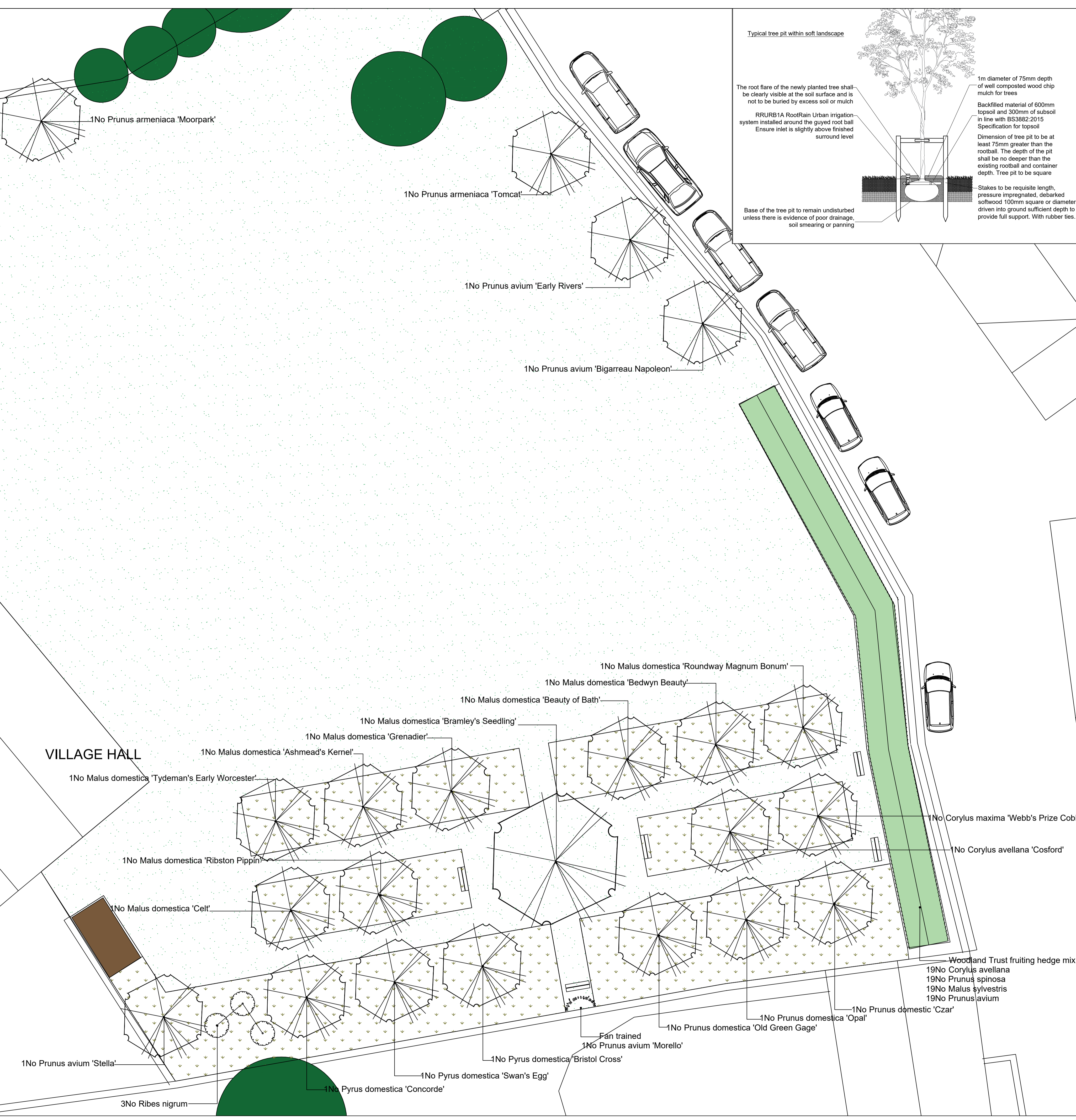


Species Name	Height	Density	Specification	No
<i>Corylus avellana</i> 'Cosford'	10-15m	Counted	Multi-Stemmed 3/4 brks C	1
<i>Corylus maxima</i> 'Webb's Prize Cobb'	10-15m	Counted	Multi-Stemmed 3/4 brks C	1
<i>Prunus avium</i> 'Morello'	10-15m	Counted	Fan trained 3/4 brks 24 C	1
<i>Prunus armeniaca</i> 'Moorpark'	11-15m	Counted	Standard Clear Stem 150-175 3/4 brks C-2tr Wavil rootstock	1
<i>Prunus armeniaca</i> 'Tomcat'	11-15m	Counted	Standard Clear Stem 150-175 3/4 brks C-2tr Wavil rootstock	1
<i>Malus domestica</i> 'Celt'	15-20m	Counted	Half Standard Clear Stem 100-150 3 brks BR M1106 semi-dwarfing rootstock	1
<i>Malus domestica</i> 'Ribston Pippin'	15-20m	Counted	Half Standard Clear Stem 100-150 3 brks BR M1106 semi-dwarfing rootstock	1
<i>Malus domestica</i> 'Tydeman's Early Worcester'	15-20m	Counted	Half Standard Clear Stem 100-150 3 brks BR M1106 semi-dwarfing rootstock	1
<i>Malus domestica</i> 'Ashmead's Kernel'	15-20m	Counted	Half Standard Clear Stem 100-150 3 brks BR M1106 semi-dwarfing rootstock	1
<i>Malus domestica</i> 'Grenadier'	15-20m	Counted	Half Standard Clear Stem 100-150 3 brks BR M1106 semi-dwarfing rootstock	1
<i>Malus domestica</i> 'Beauty of Bath'	15-20m	Counted	Half Standard Clear Stem 100-150 3 brks BR M1106 semi-dwarfing rootstock	1
<i>Malus domestica</i> 'Bedwyn Beauty'	15-20m	Counted	Half Standard Clear Stem 100-150 3 brks BR M1106 semi-dwarfing rootstock	1
<i>Malus domestica</i> 'Roundway Magnum Bonum'	15-20m	Counted	Half Standard Clear Stem 100-150 3 brks BR M1106 semi-dwarfing rootstock	1
<i>Prunus domestica</i> 'Opal'	10-15m	Counted	Half Standard Clear Stem 100-150 1/4 brks BR St Julien Rootstock	1
<i>Prunus domestica</i> 'Old Green Gage'	10-15m	Counted	Half Standard Clear Stem 100-150 1/4 brks BR St Julien Rootstock	1
<i>Malus sylvestris</i>	60-80cm	N 4C/2	Feather Bushy 1 brks BR	19
<i>Prunus avium</i>	60-80cm	N 4C/2	Feather 1/4 brks BR	19
<i>Prunus domestica</i> 'Bristol Cross'	200-250cm	Counted	1+ Half Standard Clear Stem 100-150 3 brks BR Quince A rootstock	1
<i>Prunus domestica</i> 'Swan's Egg'	200-250cm	Counted	1+ Half Standard Clear Stem 100-150 3 brks BR Quince A rootstock	1
<i>Prunus domestica</i> 'Concorde'	200-250cm	Counted	1+ Half Standard Clear Stem 100-150 3 brks BR Quince A rootstock	1
<i>Malus domestica</i> 'Bramley's Seedling'	200-250cm	Counted	Standard Clear Stem 150-175 3/4 brks BR Standard on M111 semi vigorous rootstock	1
<i>Prunus avium</i> 'Bigarreau Napoleon'	200-250cm	Counted	Standard Clear Stem 150-175 3/4 brks BR	1
<i>Prunus avium</i> 'Early Rivers'	200-250cm	Counted	Standard Clear Stem 150-175 3/4 brks BR	1
<i>Prunus avium</i> 'Stella'	200-250cm	Counted	Standard Clear Stem 150-175 3/4 brks BR	1

Species Name	Height	Pot Size	Specification	Density	No
<i>Corylus avellana</i>	60-80cm	Branched 3 brks BR N 4C/2	H 9	19	19
<i>Prunus spinosa</i>	60-80cm	Bushy 3 brks BR N 4C/2	H 9	19	19
<i>Ribes nigrum</i>	HU-60cm	Branched 2/3 brks C	Counted 4	-	-



- NOTES:**
 Based on Google Earth images. No topographical survey available for this site. Measurements are approximate.
 Design and specification is advice only, any planting or works undertaken on the site are at the risk and liability of the Village Hall committee.
- Legend**
- Existing trees (approximate size and position)
 - Proposed fruit trees to be planted with timber stakes and rubber ties as per tree pit detail
 - Proposed fruit bushes
 - Proposed fan trained Morello cherry tree. To be trained to horizontal galvanized wires set at 300mm on wall
 - Proposed native 'fruiting hedge' from The Woodland Trust for foraging and wildlife
 - Proposed benches
 - Existing grass- regularly mown
 - Existing grass- retained as meadow, mown twice per year and enhanced with wildflower plug plants and seed where necessary
 - Compost heap (to be confirmed)

N
W E
S

Date	Details	Drawn

scheme: Community Orchard,
 Village Hall Field, Sherston
 drawing: Landscape Proposals
 date: OCT 2020
 scale: 1:100@A1
 drawing no: SHERS_002
 drawn: HG