



# THE SHERSTON CLIFFHANGER



PUBLISHED BY SHERSTON PARISH COUNCIL

DECEMBER 2015

DELIVERED FREE

## Cliffhanger

Each month, with the financial backing of the parish council and local advertisers, a small team of volunteers take the contributions of up to 40 local clubs, societies and organisations, along with the adverts from over 30 local companies, and collate, edit, organise artwork, print and distribute your Sherston Cliffhanger to your front door.

The team is a little too small at the moment so if you have a spare hour or two each month and would like to help out please call Caroline info@sherstoncliffhanger.co.uk or 841405.

If you want a bit more information on what we do, the email address for each section is provided below and we'll be happy to answer any questions you may have.

advertising@sherstoncliffhanger.co.uk  
(for local advertisers)

info@sherstoncliffhanger.co.uk

(For regular events and what's on)

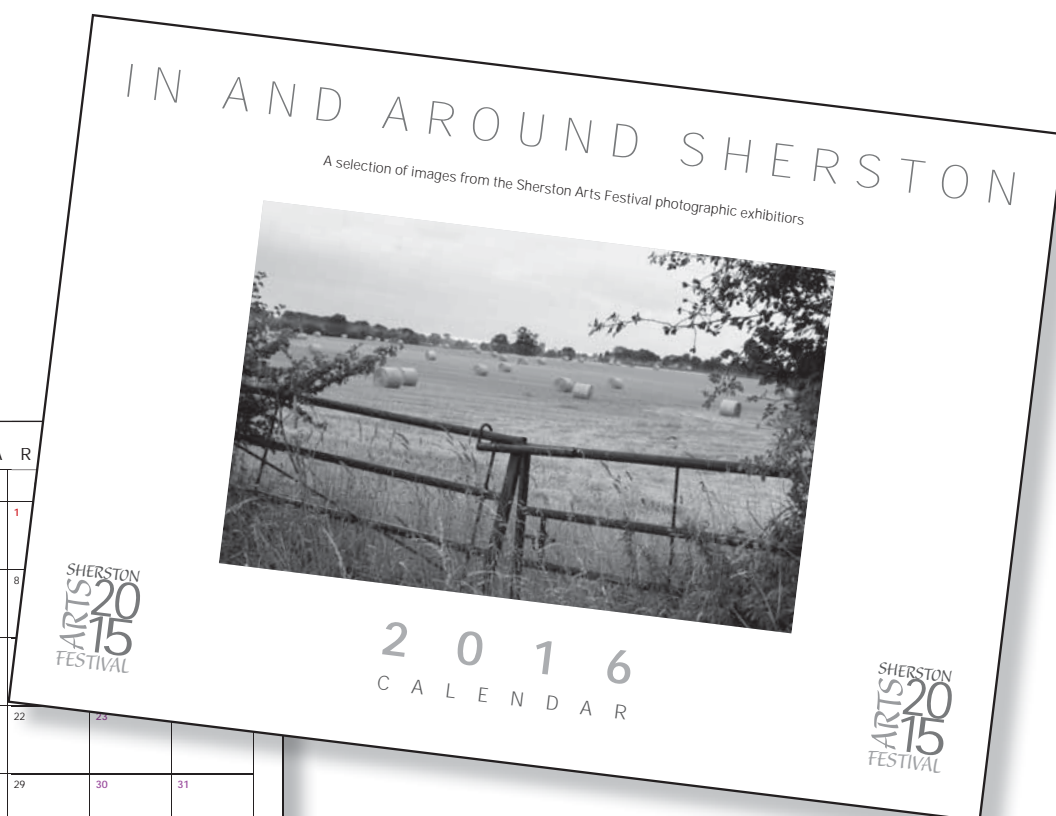
editorial@sherstoncliffhanger.co.uk

(For written contributions from clubs, societies and organisations]

*The Sherston Cliffhanger team*

SHERSTON  
ARTS 2015  
FESTIVAL

J A N U A R Y						
Monday	Tuesday	Wednesday	Thursday	Friday	Saturday	Sunday
28	29	30	31	1		
4	5	6	7	8		
11	12	13	14			
18	19	20	21	22	23	
25	26	27	28	29	30	31



Omitted from last month's review of the Festival – thanks to the group of sponsors and supporters who generously gave money and/or time: Sherston Parish Council, the Jack Lane Trust, Mrs Matilda Matthews, James Pyle, the Hibbard family, Nick Holland, Roger Whitehouse and the Women's Institute.

The aim of the Arts Festival is to provide high-quality Arts events here in the village for all ages. It also raises funds which we divide between the venues that it uses – the church, the village hall and the British School Room – and about £2,500 was

raised this year. The figure will be a little higher if all the 2016 calendars are sold so please look out for them on sale in the post office – they feature some lovely photos of Sherston and its surroundings and would make a great Christmas present for friends and family living away.



# Christmas trees



Non-drop Christmas trees available outside The Angel every weekend morning, 9.30am-12.30pm on Saturday and Sunday whilst stocks last. All trees can be netted after purchase and, for a donation, can be delivered locally by the scouts.

Prices are: 4ft £35, 6ft £45 & 8ft £55.

Please contact Emma Newby to pre-order and reserve your tree on 841402 or emmanewby@gmail.com. All profits to Busy Hands Pre-School and 1016 Viking fund.

**Copy deadline:** 10<sup>th</sup> of the previous month.  
Send to [editorial@sherstoncliffhanger.co.uk](mailto:editorial@sherstoncliffhanger.co.uk)  
or hard copy to Sherston Post Office Stores.

**What's On:** contact Caroline Moore on 841405 or [info@sherstoncliffhanger.co.uk](mailto:info@sherstoncliffhanger.co.uk)

The size and content of the Cliffhanger depends entirely on the amount of copy we receive from individuals and groups. So, if you feel you have something of interest, please don't hesitate to tell us. Around 400 words would be a maximum but the shorter the better and less editing would be needed.

**Top tip:** if you're telling us of an event coming up, write a short piece about it rather than just supply basic details or a poster. You will then get a short article published to help boost interest as well as a mention in our What's On section. Don't forget to tell us how your event went, with a photo if possible.

**To advertise, contact:**  
[advertising@sherstoncliffhanger.co.uk](mailto:advertising@sherstoncliffhanger.co.uk)  
James Kutchera 07985 050791

Advertising rates:  
for 12 months:  
1/4 page £220; 1/8 page £110; and 1/16 page £55  
for one month:  
1/4 page £88; 1/8 page £44; and 1/16 page £22  
Inserted leaflet drop £85 max size A5

Whilst every effort has been made to ensure the accuracy of advertisements contained in this publication, Cliffhanger cannot accept any liability for errors and omissions. Inclusion of an advert should not be taken as an endorsement by Sherston Parish Council.

Please remember the Cliffhanger is delivered free to every home and business in the parish – more than 1000 copies. This and all previous editions are also available online at [www.sherston.org.uk](http://www.sherston.org.uk)

PRINTED BY THE COMPLETE PRODUCT COMPANY, PINKNEY

## Can you help?

We need somebody to do the deliveries for Didmarton. If you are able to do this could you please ring Beryl Clampton on 01666841201 or e-mail [beryl@clampton.com](mailto:beryl@clampton.com). Thank you

## Sherston Church Christmas Bazaar

Sherston Church Christmas Bazaar will be held on Saturday 5 December in the village hall. It will start at 11.00am with coffee and mince pies, then lunch of homemade soup, with bacon or cheese rolls will be served from 12.00 noon. Stalls will include cakes, gifts, produce, toys and jewellery and there will also be a raffle and tombola.

Please come along and support your church, also to enjoy a friendly social occasion. Donations to any of the stalls, raffle or tombola will be very welcome and can be given beforehand or on the day from 10.00am. Father Christmas will be visiting and the event will finish about 2.30pm.

Phone Pat Whitehouse 840640, Heather Martin 840375 or see the Churchwardens Sue Robinson or Pam Pickthall.

## Santa's Grotto

Please come and visit Santa in his grotto at the Sherston market 10.00am until 12.30pm.

Have a private family audience with Santa in his cosy living room, choose a present and play with the elves all for £4.

Also available will be mulled wine, mince pies and craft - make a Christmas decoration to take home or decorate a gingerbread man. All profits to Busy Hands Pre-School.

## SHOCC Carols around the village

We shall be carol singing around the village on Tuesday 15 December, meeting at Easton Square at 7.00pm. Our route will take us around The Tarters, finishing at The Rattlebone around 8.15pm. If anyone would like to join us, please feel free to do so. Our chosen charity this year is Parkinson's UK. We look forward to singing the old favourites plus some new ones we have been practising.

# Sherston School Christmas Fair



It's that time of year again and the Friends of Sherston School (FSS) are here to get you in the mood for Christmas ... the extremely popular Christmas Fair will be held on Friday 4 December between 5.00pm and 7.00pm, so make sure you don't miss out and get down to the school for lots of Christmas fun.

The children in year 4, 5 and 6 will be running their own stalls, there will be a raffle, tombola, craft stalls, the secrets room (if you're lucky your child will buy your Christmas present here!) and refreshments, including mulled wine and crêpes. You will be treated to some Christmas music from the children and may even spot a very special festive visitor!

The FSS is raising money for a new fitness trail for the school to enhance the children's outdoor play time, so please come and support the FSS and the school at this fun and festive event.

Everyone is welcome and we hope to see lots of you there.

## Thank you from Anthea Young

Thank you to all my friends who have made it possible for me to send a cheque for £570 to the Royal United Hospital in Bath towards the appeal for a position scanner needed in the radiology department. Thanks especially to Mrs Doreen Purnel who donated sack upon sack of new wool which has enabled me to crochet so many items, and thanks to all of you who gave me donations of money, items to sell on the stall I had at Sherston Market on 3 October - and to all who bought those items. There are so many of you to thank for help of all kinds, you know who you are, I'm so glad I live in this wonderful village, well done Sherston, you've come up trumps yet again!

## Christmas Lights

If you live on the High Street and would like to festoon your frontage with Christmas lights contact Jill Caaney (jill.caney@gmail.com or 841380)

## Farm Africa Thank You

Farm Africa would like to thank the generous people of Sherston for their amazing contribution of £50 into the donations tin in the Post Office during the month of October. This will greatly help poor African farmers to be more productive and self-sufficient, THANK YOU.

## Winter Games Club

The Friday board games sessions for children will be taking a break now until the New Year. The first session of 2016 will be on Friday 29 January in the Scout Hut, 3.15pm until 5.15pm.

## Meeting of the parish council

The parish council will next meet on Thursday 10 December in the village hall at 7.30pm. All are welcome to attend and there are opportunities to raise questions and make comments. If you cannot attend the meeting but have something to raise, please contact the clerk, Sarah Wood, on 840197 or email clerk@sherston.org.uk. You can also contact the council via the response form on [www.sherston.org.uk](http://www.sherston.org.uk) where minutes of meetings can also be read.

## Football Fouls

As the colder and wetter weather has arrived, along with dark mornings and evenings, dog walkers and their four-legged friends tend not to stray as far from home.

As a reminder it is not permitted to take your dog onto the recreation ground or football pitch. Owners have been seen allowing their dogs to run on the football pitch and those that play football are having to clear the pitch of poos prior to every game to avoid much unpleasantness, so do not take your dog to the football pitch.

When walking your dog in the village your dog should be on a lead at all times. The parish council have received a number of reports of uncontrolled dogs (with an owner in the distance) harassing people. This is particularly distressing when it is dark and those owners who allow their dogs to walk off the leash in the village are likely to be the very same owners who do not pick up after their dogs - if you're not controlling your animal, you're unlikely to know about or be interested in picking up any poos.

We had very few reports of dog fouling over the summer and we thank all dog owners for behaving responsibly, but please ensure that over winter this good behaviour from owners continues.



## SHERSTON REMEMBERS 1914 - 1918

*Photographs courtesy of Nick Holland.*

Following a very wet week, Sherston's Remembrance service was conducted under leaden skies with the rain just holding off until we had gone home. The mood was set by the bells ringing half-muffled followed by sombre music provided by Mike Whatley with David Shepherd's marvellous equipment gave excellent sound despite the strong wind. Over 400 people from Sherston and Easton Grey assembled in Church Street to await the arrival of the scouts, cubs and brownies who had marched from the Scout Hut. 9 Regiment Royal Logistic Corps sent a small detachment of soldiers from Buckley Barracks. The scene was set for the appearance of the choir, the wreath-layers, the speakers and the clergy to process down the path from the Parish Church. The procession was led by the vergier, Roger Whitehouse, carrying the cross to the lych gate.

Reverend Susan Harvey recited prayers as we awaited the 11 o'clock chimes of Holy Cross Church when Charles Price blew Last Post on his bugle from the parapet of the tower. The newly acquired large Union Flag flew rigorously on the tower during the two minutes' silence and Reveille was sounded. Lieutenant Colonel Nick Grant Thorold, late of the King's Royal Hussars, recited the Exhortation. For the first time in many years Neil Forster felt unable to deliver the Exhortation; we thank him for his loyal support to the service.

Wreaths were laid by: John Mathews, Chairman of Sherston Council; Lieutenant Nick Covington, RLC Buckley Barracks; John Waite, Malmesbury Royal British Legion; Lieutenant Colonel Linda Stevens (Consultant Surgeon), Royal Army Medical Corps, Sherston Church; Mary Clements, Congregational Church; Ted Greening, Cub; Fearn Blair, Brownie.



Sherston Occasional Community Choir, conducted by Trudi Baker, sang 'Keep the Home Fires Burning'. The Kohima Epitaph was recited by Sergeant John Donnelly Royal Logistic Corp. The names of the men of Easton Grey were read by Captain Henry Jodrell, late of the Blues and Royal, and Finn Wood read the names of the Sherston fallen.

The Reverend Susan Harvey and Pastor Andrew Williams Tarling shared the prayers and Scout Andre van Rooyen read 'I Went To See The Soldiers' by Kenny Martin. During the singing of 'O God are help in ages past' a collection was made for the Poppy Appeal. The service was ended by the singing of the National Anthem.

Last year was the centenary of the start of the First World War and we were grateful for the extensive financial support of the Parish Council for the event. This year the Parish Council produced the posters, while the Parochial Church Council and the Congregational Church funded the order of service which was designed and printed by Paul Ormiston, Compass Graphic Design. The stewards, led by Squadron Leader Jim Robinson, included Roger Clements, Nigel Freeth, Lieutenant Commander Christopher Morgan RN, Wing Commander Dr Pam Pickthall, Susan Robinson and Pat Whitehouse. Sarah Wood arranged the road closures and Graham Simpson managed the closures on the day. Reverend Susan Harvey, Wing Commander Christopher Pickthall and Anthony Price who organised the ceremony would like to thank everyone on behalf of the village for their help.



*Charles Price playing the bugle from the Church Tower*

### Computer Problems?

Home or Business Support

We Come To You !

Fast Service, PC & Laptop Repairs, Virus Removal, Data Recovery  
Wireless Networks, Broadband & Email Setup, Security and Parental Control,  
Hardware and Software Sales. Microsoft Qualified. Local & Friendly.

**Silverchart Systems Ltd**

[www.silverchart.co.uk](http://www.silverchart.co.uk)

**CALL US NOW !**

**01666 840531**

**[office@silverchart.co.uk](mailto:office@silverchart.co.uk)**

# Drawing Classes in Sherston

Classes are held in the British School Room, Cliff Road, during term times on Wednesday either 10.00am to 12.00noon or 1.30pm to 3.30pm. Students have individual attention and the classes are friendly and welcoming. We work on observational drawing in a range of media, pencil, watercolour crayon and pastel, subjects include plants and flowers, natural objects and still life groups. For further information please contact Heather Martin [heather@geoffmartin.plus.com](mailto:heather@geoffmartin.plus.com) or phone 840375

## Library Event

On Wednesday 2 December at 2.30pm Malmesbury Library is holding A Wiltshire Christmas, a talk and readings from the Wiltshire Archives with Margaret Moles (archivist) revealing how this seasonal event in our historic county was celebrated in the past. Tickets are £3 including refreshment. Malmesbury Library, Cross Hayes. Tel. 823611.

## The Family Christmas Carol Service

We are excited to announce there will be a Carol Service in The Church of the Holy Cross, Sherston, on 22 December, 6.00pm-6.45pm.

Carols by candlelight, a few readings and a sprinkling of Christmas cheer!

We look forward to seeing you there!

**Delivering a First Class Service**



**Sherston**  
**Post Office Stores**

Tel 01666 840456 / 841127

# Sherston W.I.



After a recent guided tour round Bath, many WI members had wished that they had lived in the city in the elegance of the 18th Century: that was until the talk by Judi Wray-Bliss a month later. Judi told us about the drains, the smells and the fleas and the ingenious ways the people dealt with them. Such were the numbers of people coming to Bath for the season, following the fashion set by Queen Anne, that several thousand houses had to be built rather quickly. The fronts of the houses were grand, the backs less so. The Assembly Rooms were used for balls (you had to learn how to use your fan correctly), gambling and taking tea. Judy gave us a small black adhesive dot and told us to use them as beauty spots on our face (they used them to cover smallpox scars). We were then very amused when she revealed that some of us were modest and some were hussies – depending on where on the face we had put the spot!

On 3 December it will be the last meeting of the year when we have Jean Collins giving a talk entitled 'Looking at life as I see it' to be followed by tea and cake. The monthly competition is a Christmas table decoration made by members.

PS/JW

## Sherston Auto Services



**M.O.T  
Test Centre**



**Servicing & Repairs  
Tyre Fitting and Wheel  
Balancing  
Diagnostic & Service Indicator  
Reset**

**All at competitive rates**

Member of the Ford Blue Oval Club  
Genuine Ford parts fitted

**01666 840522**

Unit 1, Lordswood Farm, Sherston, Malmesbury SN16 0JZ

**FREE COLLECTION & DELIVERY IN THE SHERSTON AREA**

Courtesy cars available

**All major credit cards accepted**

**OPEN:  
Monday – Friday 8am – 6pm  
Saturday 8am – 1pm**

# Broadband Roll Out Update

Wiltshire-On-Line1

Wiltshire Council is working very closely with BT to implement Broadband across Wiltshire.

Visit the dedicated website – [www.wiltshireonline.org](http://www.wiltshireonline.org) – and enter your seven-digit postcode into the checker online to find out the plans for both Phase 1 and Phase 2 of the roll-out scheme.

There are 18 Community Area maps published on the website mapping the commercial, Phase 1 build, Phase 2 plans and the 'no build'. No build zones are the hardest to reach; as yet we don't have funding to support implanting broadband in these areas.

Those in the 'no build' areas could be premises attached to infrastructure we have not upgraded at all or due to the complex nature of the infrastructure connected to infrastructure we have upgraded but have not received an improvement – example distances away from CABS.

Visit the site for online information on how to order, the complexities of the build and information about alternative suppliers and technologies.

For more information contact the dedicated email address [broadband@wiltshire.gov.uk](mailto:broadband@wiltshire.gov.uk)

## Lumley Garden & Pet Supplies

Stainsbridge Mill, Gloucester Road, Malmesbury, Wiltshire, SN16 0AJ

Tel: 01666 822325 E-mail: [etlumley@googlemail.com](mailto:etlumley@googlemail.com)

[www.lumleypetsupplies.com](http://www.lumleypetsupplies.com)



\* Top Leading Brands of Food & Treats \*

\* Our Own Label Premium Dog Food \*

\* Bowls, Toys & Accessories \*

\* Beds & Cushions \*

\* Wild Bird Food & Products inc. Live Food \*

*" for you and your pet's every need. "*

Delivery Service Available



## Noah's Ark Day Nursery

Providing a nurturing and stimulating environment for babies and children aged 3 months to pre-school.

Telephone: 01666 840105

E Mail: [noahsarknursery@aol.com](mailto:noahsarknursery@aol.com)

# Police Community Messaging – Sign Up Now

What is it?

Free messages from your local police officers about policing and crime matters in your area. You can receive free messages by email, text or voicemail. You can choose which organisations to receive messages from and the type of information you receive.

Currently, messages are being sent by Wiltshire Police, Wiltshire and Swindon Neighbourhood Watch and Action Fraud. This will soon be extending to include other watch schemes, including Horse and Farm Watch, and potentially partner agencies in the future.

You can reply to messages from your local officers to help them better police your area, such as by responding to police appeals for information'. You can also join a Neighbourhood Watch Scheme in your area or request to start a new one.

Swindon Community Messaging aims to improve the flow of information between communities and the police.

How do I get involved?

Wiltshire Police and the Police and Crime Commissioner for Wiltshire and Swindon, Angus Macpherson, wish to involve communities in the prevention and reduction of crime and anti-social behaviour. Signing up to Wiltshire and Swindon Community Messaging is free, quick and easy. You can sign up online for free now by clicking the purple 'Join' button on the website. With their permission, you can sign up a family member or friend if they don't have Internet access.

You can change your preference or unsubscribe to the system at any time by logging in to your account on the site or by emailing [communitymessaging@wiltshire.pnn.police.uk](mailto:communitymessaging@wiltshire.pnn.police.uk)

## SHERSTON DOG GROOMING

SHERSTON, MALMESBURY, WILTS SN16 0NJ

- Fully Qualified to City and Guilds level 3 with Distinctions
  - Full hydraulic dog bath and table
  - Full groom/clip prices from £25
- Full groom/wash prices from £10 • Clip nails £5
  - Situated on site with Pyke Boarding Kennels
  - Please call for appointment

**Rachel Stanley**

**01666 840386**

**M 07557 654880**

[www.sherstondoggrooming.co.uk](http://www.sherstondoggrooming.co.uk)

Facebook: Sherston Dog Grooming



## Christmas and New Year waste and recycling collection dates

Normal collection day	Household waste, black box and plastic bottles and cardboard collection revised collection day	Garden waste revised collection day
Thursday 24 December	Collections as normal	Collections as normal
Friday 25 December	Monday 28 December	No collections
Monday 28 December	Tuesday 29 December	No collections
Tuesday 29 December	Wednesday 30 December	No collections
Wednesday 30 December	Thursday 31 December	No collections
Thursday 31 December	Saturday 2 January	No collections
Friday 1 January	Monday 4 January	No collections
Monday 4 January	Tuesday 5 January	No collections
Tuesday 5 January	Wednesday 6 January	No collections
Wednesday 6 January	Thursday 7 January	No collections
Thursday 7 January	Friday 8 January	No collections
Friday 8 January	Saturday 9 January	Saturday 9 January
Monday 11 January	Collections as normal	Collections as normal

There will be no collections on 25 December, 26 December and 1 January.

Garden waste collections will be suspended from Friday 25 December and restart on Saturday 9 January.

You can check your revised waste and recycling collection dates and print off your waste calendar at: [www.wiltshire.gov.uk/waste](http://www.wiltshire.gov.uk/waste)

If you have paid to have your garden waste collected at home you can leave your real Christmas tree alongside your garden waste bin for collection between 9 and 31 January only. Alternatively, Christmas trees can be recycled at any of Wiltshire's 11 household recycling centres.



**ecofield**  
RURAL ENERGY

Specialists in solar PV for farmers and land owners.

- 10 to 250 kWp ground and roof mounted installations.
- Battery storage systems.
- MCS accredited and fully insured.
- Tracked loader hire

For free and impartial advice call us now on  
tel: **01666 890567**  
or visit **www.ecofield.co.uk**




**FOREVER LIVING PRODUCTS**



**Independent Distributor of Aloe Vera Based Products**

Improve income or health or both. Products sold, events organised. 60-day money-back guarantee.

Beryl Clampton  
01666841201 / 07850623517  
[beryl@clampton.com](mailto:beryl@clampton.com)

**ENQUIRIES WELCOME**

**Prestige Computer Services Ltd**

Computer Systems Sales and Repair

- Over 28 Years Experience
- PC Laptop & MAC Computer Systems
- New XP PRO Vista Win 7 & Mac Systems
- Slow and Sluggish Computers Made Fast Again
- Systems Up Grades & Software Installation
- Data Recovery
- Hard Drive Duplication
- Home and Office Service Calls
- Virus removal & Anti Virus Software Installation
- Broadband & Wireless Internet Connections
- Email Account & Access setup
- Free Off Road Customer Car Parking

Tel: **01666 824031 - 825620**

Unit 4 Park Rd Centre Malmesbury SN16 0BX

# News from across the Gauzebrook Group, December 2015

Light Bites Lunch Club has been a great success. We've enjoyed some great (but not so light) lunches, good conversation and spiritual reflection. I'd be interested to hear thoughts about how we could develop it. I also have recordings of the two recent In Depth sessions on 'Con, Cover up or Canon - how the New Testament came to be' and 'Did St Paul get Jesus misunderstand Jesus' in case anyone missed them and would like to catch up.

I'm pleased to announce that generous donations from individuals, the Malmesbury Carnival and The Fulmer Trust mean that our Rural Schools and Churches Worker project is essentially secured for the remainder of this academic year. We are using the breathing space to apply to major trusts for significant sums in future years, and to smaller trusts for top-up money. We'd be really keen to hear from anyone who has contacts within charitable trusts or knows of any who would be sympathetic to this project.

'Busy time for you Vicar' is a familiar greeting during December, and indeed it is busy, but I love it too. It's wonderful when communities come together to celebrate, and we rejoice in the birth of Christ. Our Christmas services and carols are listed in the Parish Life – this year there are a wide range of worship styles from All Age to more traditional.

The Sunday after Christmas, the 27 December, will offer a Group Service at 10.30am in Sherston Holy Cross. During this service, which will be a Family Communion, we will welcome Bennett Robinson (churchwarden Sue Robinson's grandson) and Alunamda Reid to the church as they are baptised. The Sunday after Christmas often has the theme of the Holy Family, so two baptisms from Christ's worldwide church seem particularly appropriate on this day! All welcome.

After the Christmas break, Little Lights will be restarting on Thursday 7 January at 10.30am in Hullavington Church. 0-5 year olds and their parents/carers are welcome to this accessible and friendly activity with songs, craft, refreshments, story and a prayer. Our Youth Group for secondary school age pupils, TOAST, will also be continuing every Sunday from 9 January in Court House at 7.30pm. Messy Church will also meet regularly on the second Sunday of the month at 3.30pm in Hullavington Village Hall.

Finally, 31 January is a 5th Sunday so there will be a Group Service at 10.30am in Foxley, celebrating Candlemas as our only service in the Group that day.

Wishing you every blessing for a joyful Christmas and a happy New Year

*Christopher Bryan*

# Sherston Senior Club

The visit to Moreton-in-Marsh and Bourton-on-the-Water was very enjoyable. Seeing the autumn colours in all their glory on the journey and for those who went to the market a good day for bargains. Bourton also had a lot to offer so the coach returned a little bit heavier.

Our next meeting was the Autumn Sale and members rallied round to make it a good afternoon.

By the time you read this, 10 November will have come and gone. However, due to work being carried out in the British School Room, our meeting will have taken place at 21 Church St, by kind permission of Rosemary Venning, with a special tea laid on and a 'Guess who?' photograph competition.

On 24 November, Sherston School Choir will be entertaining us. This is always a lovely afternoon. Members free, visitors who are always welcome £2.00 this includes refreshments.

Looking forward

8 December is our Christmas lunch at the Old Royal Ship 12.00noon for 12.30pm.

This will be our last meeting for 2015 and we restart on Tuesday 12 January at 2.00pm for our AGM and to renew membership cost £15.00. New members or visitors are very welcome.

May I take this opportunity, on behalf of the members, to thank all those who have supported us throughout the year and wish everyone a happy Christmas and a healthy New Year.



Wishing you all a very Merry Christmas and all that you would wish yourselves in the New Year.

Ellen Blacker

Tel: 07557 922020 or email me at [malmesburygnc@communityfirst.org.uk](mailto:malmesburygnc@communityfirst.org.uk)

## MARY DERRICK SWIMMING LESSONS FOR CHILDREN

### AT WESTONBIRT SPORTS CENTRE

NOW OFFERING LESSONS MON, TUES, WED & THURSDAYS AFTER SCHOOL

**We have classes for all abilities:-**

Pre-school classes (3-5 years) have the teacher in the water, parents do not have to get in unless necessary!

Beginners classes have the teacher in the water. Two levels of improver classes & also lane swimming for advanced improvers.

All teachers are fully qualified & CRB checked. We follow the ASA award scheme & have termly "badge nights" for distance awards. We also run personal survival classes, bronze, silver & gold challenge awards & also rookie lifeguard courses. Holiday courses also available.

All lessons run half termly & are ongoing so no need to keep booking in every term!

TEL. 01666 841133 or 077 144 252 01

WE HAVE BEEN ESTABLISHED IN THE MALMESBURY AREA FOR 20 YEARS  
ASA SWIM SCHOOL MEMBER

[www.maryderrickswimming.com](http://www.maryderrickswimming.com)

# Household recycling centre opening hours

Household recycling centre opening times over Christmas and New Year  
(normal opening hours resume on 2 January 2016)

\*Open from 10am – 1pm

Site	Thursday 24 December	Friday 25 December	Saturday 26 December	Sunday 27 December	Monday 28 December	Tuesday 29 December	Wednesday 30 December	Thursday 31 December	Friday 1 January
Amesbury	✓*	X	X	✓	✓	X	X	✓	X
Devizes	X	X	X	✓	✓	✓	✓	X	X
Everleigh	X	X	X	✓	✓	✓	X	X	X
Calne	X	X	X	✓	✓	✓	X	X	X
Marlborough	✓*	X	X	✓	✓	X	X	✓	X
Melksham	✓*	X	X	✓	✓	X	X	✓	X
Purton	✓*	X	X	✓	✓	X	X	✓	X
Salisbury	X	X	X	✓	✓	✓	✓	X	X
Stanton St Quintin	X	X	X	✓	✓	✓	✓	X	X
Trowbridge	X	X	X	✓	✓	✓	✓	X	X
Warminster	X	X	X	✓	✓	✓	X	X	X

All household recycling centres will be closed from 1.00pm on 24 December, and also all day on 25 December, 26 December and 1 January. At all other times, the centres are open during their revised normal opening hours, 10.00am – 4.00pm, five days per week.

Please check when your local household recycling centre is open before travelling. You can check the opening times at [www.wiltshire.gov.uk/waste](http://www.wiltshire.gov.uk/waste) or on 0300 456 0102.

Please note that all household recycling centres are

likely to be very busy over the Christmas and New Year period. Remember you can put out extra black box recycling by your box in separate plastic bags. Second black boxes and blue lidded bins are available to any resident free of charge.

Don't forget to recycle the following items this Christmas:

In your blue lidded recycling bin - Christmas cards, cardboard tubes, wrapping paper (not foil or plastic

In your black box - chocolate and biscuit tins, clean foil, including cake cases and washed foil turkey trays, Christmas card envelopes

For the Widest Range of Bedding,

Hanging Basket & Patio Plants in the Area

**FOXLEY ROAD NURSERIES**

Herbaceous Perennials & Alpines

Vegetable and Herb Plants

**Foxley Road, Malmesbury**

Tel: 822171 [www.foxleyroadnurseries.co.uk](http://www.foxleyroadnurseries.co.uk)



## Charming House to rent in historic Southern France

16 Rue Montmorency is a charming three-bedroom town house located in the heart of Pezenas, a beautiful medieval market town. The house can accommodate 6 people comfortably and was built in the 18th Century. Constructed from ancient stone (probably from the neighbouring castle ruins!) it comes complete with authentic touches such as decorative wrought iron railings and sky blue wooden shutters which are a decorative theme running through Pezenas.

### Light and airy with stunning views

Number 16 is situated on the apex of a row of town houses, and so has light on three sides as well as a roof terrace with stunning views over the old town and Languedoc countryside. Rue Montmorency is a stone's throw from the bars and bistros of the vibrant old town.

Please see the website for more details [www.realsouthoffrance.co.uk](http://www.realsouthoffrance.co.uk)

Or call Jennie Lamont on 07985443863

Quote Cliffhanger on any enquiry



**Creative Hairdressing has fully qualified and experienced stylists in all hair lengths and styles, both modern and traditional.**

**Come and join us for that creative experience so we can create that individual look for you.**

**For more information or to book an appointment contact**

**Creative Hairdressing,  
3 Market Place,**

**Tetbury,**

**01666 502949**

**[www.creativehairdressing.co.uk](http://www.creativehairdressing.co.uk)**



# Tolsey News

*Judy Sharp Practice Manager*

## How much do repeat prescriptions cost?

According to the Medicine Waste campaign, unused prescription medicines cost the NHS in the UK an estimated £300m every year. This could pay for:

11,778 MORE community nurses or  
80,906 MORE hip replacements or  
19,799 MORE drug treatment courses for breast cancer or  
300,000 MORE drug treatment courses for Alzheimer's or  
312,175 MORE cataract operations

One of the main concerns is that medicines on repeat prescriptions, which are ordered and collected by patients, are not used. It is estimated that £90m worth of unused prescription medicines are retained in individuals' homes across the UK at any one time.

Between 40-50% of patients do not take or use their medicines as prescribed. This can occur for a number of reasons, including: patients not believing the medicine is necessary; possible side effects; fitting taking or using medicines into daily routines; choosing between medicines if patients feel they are taking too many; and cutting down or stopping medicines they have been taking for a long time.

So how can you help to reduce this amount whilst saving money for the surgery and the NHS as a whole?

- Please let your GP or the dispensary know if you've stopped taking any of your medicines
- Check what medicines you still have at home before re-ordering
- Discuss your medication with your GP; this can easily be done in a phone consultation
- Think carefully before ticking all the boxes on your repeat prescription forms and only tick those you really need
- If you don't need the medicine, please don't order it! If you need the medicine in the future you can still request it.
- If you need to go into hospital, please remember to take all your medicines with you in a clearly marked bag.
- Please also remember that your medicines are prescribed only for you; it's not safe to share them with anyone else.

What to do with unused medication that you no longer need:

- Even if you never open them, once medicines have left the pharmacy, they cannot be recycled or used by anyone else.
  - Please bring your unused medicines to the pharmacy for safe disposal.
  - NEVER dispose of your unused or unwanted medicines down the toilet
- Unused medication can be a safety risk:
- Return out of date medicines to your pharmacy or dispensary for safe disposal
  - If your medicines change - return your old medicines to the pharmacy for safe disposal to avoid mixing them up with your new medicines
  - Don't stockpile medication - it is a safety risk for children and others who might take them
  - Store medicines in an appropriate place out of reach of children

Christmas and New Year surgery times

We will be closed on:

Friday 25 December,  
Monday 28 December, and  
Friday 1 January.

We are open as usual at all other times.

We wish all our patients a very merry Christmas and a happy and healthy New Year!

## Andrew James QUALITY TRAVEL

Andrew James Quality Travel prides itself on always providing a high level of service, attention to detail for any event or trip and providing perfectly presented, clean and valeted vehicles.

Its team of staff will ensure the success of any occasion, advising and assisting with the arrangements.

Whether you are planning a day out and need a mini-coach or you would like a large, luxurious, executive coach you will always find Andrew James vehicles beautifully prepared and exceptionally clean so that you can settle back and travel in comfort.



Telephone: 01666 825655  
Email: [ajcoaches@andrew-james.co.uk](mailto:ajcoaches@andrew-james.co.uk) Website: [andrew-james.co.uk](http://andrew-james.co.uk)

## Foxley Plumbing & Heating

Oil Boiler Installation, Servicing and Repairs  
Oil Tank Replacement  
Heating Installation and Repairs  
Bathroom Installations  
Unvented Cylinder Systems  
No Job Too Small

**Tim Hibbard**

Malmesbury (01666) 822863  
Mobile 07966 462202  
Email [foxleyph@btinternet.com](mailto:foxleyph@btinternet.com)



## Come and Join the Sherston Babies and Toddlers

Every Tuesday, there is a fun toddler and baby group held in the Scout Hut (the building on the rec). Run by a friendly group of mums, all babies, toddlers, preschoolers and their mums, dads and carers are very welcome. Doors open at 10.00am. There are lots of toys for all ages, craft activities, including some messy play, snack time and a singing session to finish. There is, of course, tea and coffee on hand and there is always someone to chat to. It is a great way to meet new people especially if you are new to the area.

We would love to meet you – 10.00am-11.30am, Tuesdays (term time), Sherston Scout Hut.

## Tracklements Open Day



Tracklements will be opening their doors once again for their annual Christmas Open Day. On Saturday 5 December from 9.30am until 1.00pm bring your friends and family to the Tracklements factory in Easton Grey to experience the transformation of raw ingredients into Tracklements sauces, chutneys, jellies and mustards.

There will be mulled wine, festive nibbles and a great opportunity to do some Christmas shopping.

**Grays of Sherston** 01666 840728

5 Church St, Sherston, Malmesbury SN16 0LR

♦♦♦

MOT's, servicing and advice  
Tyres, air conditioning and tow bars.  
Our friendly, professional village garage.

**01666 840728** Local quality car care

**L.P. Electrical**  
**Reliable & Friendly service**  
**Free Estimates for all your electrical needs**  
**Domestic, Industrial and Commercial**

Safety checks, Rewires, Extensions, Extra lighting and sockets, Fault finding, Test and Inspecting, Fuse board replacements, etc

Fully insured and guaranteed  
Over 11 years experience  
**Call Les on 07890 541492**

## Pothole Procedure

As we head into winter it is likely that the increasing number of potholes will continue to be a problem. The parish council will pass on any reports to the Highways team at Wiltshire Council, but reports can be made direct to the Highways team using the council's website or app.

The free app allows issues, not just potholes, to be reported on the go using your smartphone. The MyWiltshire app is available to download at both the App Store (<https://itunes.apple.com/gb/app/my-wiltshire/id593871106?mt=8> for iPhones and iPads) and from Google Play Store™ (<https://play.google.com/store/apps/details?id=council.wiltshire.app> for Android phones). Information such as photos or videos can be uploaded and the location of the pothole can be pinpointed using the mapping software on your phone.

To report a pothole (anonymously) visit: <http://www.wiltshire.gov.uk/parkingtransportandstreets/roadshighwaysstreetcare/mywiltshirereport.htm>. The Highways team find photos and information about the depth and location of the pothole useful in prioritising repairs.

**Martin Ward & Andy Walden**  
Estate & Garden  
Maintenance Incl:  
Clearance work  
Hedge & Grass Cutting  
Any types of Fencing  
Any Job Considered  
Fully Insured  
Competitive Rates  
Mobile 07810136778

*Shear Class & Serenity*

Uni-Sex Hair Salon and Beauty Salon  
Sherston 01666 840840

**Tuesdays - Saturdays**  
**Late Opening and Reduced Rates for**  
**Senior Citizens on Thursdays**

*For all your Hair & Beauty*  
*Treatments*  
*Appointments not always necessary*  
*please call in*

**MATRIX**

**BIOLAGE**

# Sherston School Pupils Learn to Street Dance



On Friday 6 November, the Friends of Sherston School (FSS) funded street dance workshops for all children at the school from Reception to Year 6. The FSS were able to fund this after winning a national PTA award for the 'pop up village' event two years ago. Urban Strides not only teach street dancing, but they have choreographed routines for various celebrities, such as Sir Richard Branson, James Corden and Alexandra Burke, and they were the first street dance crew to open the Royal Variety Performance. The children all had a fantastic day and thoroughly enjoyed doing something new and different. No doubt most parents have been shown some new moves!

Jack Witchard in Year 4 said 'It was amazing! My favourite bit was when we all did the whole dance at the end using all the moves that we had learned throughout the session.'

Mrs Berry, year 2 teacher, commented: 'Everyone thoroughly enjoyed Andy's visit, especially those who had participated in Young Voices before and had some idea of what to expect. The dance workshops were fantastic fun. His enthusiasm and positive message that you can do anything if you work hard enough was inspirational. A huge thank you to the FSS for providing us with this experience.'

## Sherston Primary School supports Operation Christmas Child

Sherston Primary School again supported Operation Christmas Child with enthusiasm and a most generous selection of brightly covered shoeboxes, which they carried down to the British School Room on Tuesday 17 November.

After watching a short film showing the receiving of boxes in other years and countries (projected for the first time on new big-screen audio/visual equipment purchased by the Congregational Church), the Reverend Christopher Bryan and Pastor Andrew Williams-Tarling both led the children in prayer for those who would receive their exciting gifts.

Later in the day the shoeboxes were collected by

a team of volunteers from the processing/packing centre in Chippenham from where they will be despatched to Eastern Europe.

We thank all those generous and patient parents who have helped in the provision and preparation of these precious gifts. You and your children will be responsible for many a smile this Christmas!

For inspiring videos of reception of these gifts, please see [www.operationchristmaschild.org.uk](http://www.operationchristmaschild.org.uk)

Mary Clements, OCC area Rep. and Secretary of Sherston Congregational Church



**C.J. GOUGH**  
PAINTER &  
DECORATOR

**41 The Tarters,  
Sherston,  
Malmesbury,  
Wiltshire  
SN16 0NT**

**Telephone:  
01666 841003**

**Positively Dogs**



- Behaviour Consultations  
qualified, logical, straightforward advice that works
- 1-2-1 Training  
tailor made to help you and your dog
- Classes  
from puppy to adolescent

for further details or advice please call  
01666 840179 / 07712 128147

[www.positivelydogs.co.uk](http://www.positivelydogs.co.uk)

# Grants from the parish council

Over any given year the parish council receives a large number of requests to support events and groups. With funds from central Government to Wiltshire council reducing rapidly, Wiltshire council expects more of the financial burden for maintaining our village to fall on the parish council. This means the parish council will have to think carefully about future budgets, perhaps increasing the precept (the portion of council tax that villagers pay and is passed to the parish council), and will also have to consider carefully and fairly how to support village activities.

A grant is any payment made by the Council to be used by an organisation not directly controlled or administered by the Council for a specific purpose that will benefit the Parish. Any grant request for greater than £100 will need to be made using an application form and the requests will be assessed on the basis of need for financial support and whether the applicant can demonstrate that their activity:

- Enhances the quality of life;
- Provides a service;
- Improves recreation and / or sports;
- Improves the environment;
- Promotes the Parish of Sherston in a positive way;
- Provides entertainment, including festivals and celebrations.

To help assess requests for financial support the parish council has developed a grant awarding policy and an application form. The grant awarding policy can be found on the Sherston website (<http://www.sherston.org/downloads/sherston-parish-council-grants/SHERSTON-PARISH-COUNCIL-Granting-awards-Procedure.pdf>), along with the application form (<http://www.sherston.org/downloads/sherston-parish-council-grants/SHERSTON-PARISH-COUNCIL-Grant-Application-Form.pdf>). Applications should be provided to the clerk, Sarah Wood, on via email [clerk@sherston.org.uk](mailto:clerk@sherston.org.uk) or posted via 23 Cliff Road Sherston.

The parish council sets its budget in November and so it would be useful if applications for following year could be provided by the end of November of the preceding year, but for 2016 it would be helpful if applications could be received by the end of the December 2015.

## Shear Class Art Display

Art Display in Shear Class for the months of December and January 2016 will be Gill Ashley. Do stop by for a look – maybe even a Christmas present!

# Bonfire thanks

This year's village bonfire and fireworks went ahead successfully on Saturday 7 November. Despite a wet morning, the weather dried up for the afternoon and evening. This year's event was a first, in that there was a fantastic laser show provided by Rhys, a friend of Sherston 1016.

The members of Sherston 1016 would like to thank the following, without whom the event would not be possible:

Generous sponsors: Ian Ashby Private Hire, DPS Relocation Services, Grays of Sherston, Graham Singer Chartered Surveyor, Stretchline UK, Lesley Tarrant Hairdressing, Tin Plate Products, and Tolsey Surgery.

Venue, electricity, water: the Hillier family, Pat Bunce, Maggie McKenna and Phylip Harries.

Help with supplies and equipment: Paul, Gail and staff at the Post Office, Andrew and Julie at Tucks, Brian Littlejohns, James Bell Agricultural Contractors, Andy Nurden Skip Hire, Bruce and Gail at Sherston Free Range Eggs, Piers and Bryony Gibbs, Chris Skinner at UBE, Didmarton Village Hall, Sherston Scout Group.

Help on the day and clearing up: Darren and Owen, Ewan Blair, Paul Filmer, Roger Harden, Shane McEwan, Stedman Nicholas, Riaan and Tahiti van Rooyen.

Catering: Jo, Cathy, Katie and Jane.

First aiders: Doug and Tom.

Again, any thanks are due to all the above, without whom the event would have been in jeopardy.

It was just a shame that the numbers of people attending were down on the evening.

## Small Ads

*You can now advertise items for sale or wanted in the Cliffhanger including services required such as gardening or cleaning. Cost is £2 for up to 20 words. Copy should be in paper form and put through the letterbox at 37 High Street by the 15th of the month together with £2 in cash. All monies raised will be donated to charity.*

*Private advertisers only please – no businesses.*



**Luckington Community School**

Are you looking for a school place for your child for September 2016?  
*'Luckington produces caring, confident children who know their minds and how to use them: happy high achievers'*

<i>'Everyone gets a chance to take part in lots of sports: if there's a tournament, you can be in it. Everyone is noticed here'</i> Year 6 pupil	<i>'A fun place to learn and play'</i> Year 4 pupil	<i>'An inclusive and caring community school'</i> Ofsted 2014
<i>'Pupils are very enthusiastic about their learning'</i> Ofsted 2014	<i>'Behaviour is exemplary'</i> Ofsted 2014	<i>'Our teachers make learning fun'</i> Year 3 pupil

This is what they say about our school! Call 01666 840297

Come and see us to find out why!  
[www.luckingtonschool.co.uk](http://www.luckingtonschool.co.uk)

# Walk on the wild side

## The hungry times are upon us

First frosts have arrived, trees are barren, redwings have arrived ... you might think it's the start of the lean times for our wildlife.

These cold, long nights are very normal for our wildlife – they have evolved to be successful in such a climate and know how to cope unless it's a very hard winter (although there is lots of evidence to show that some birds are changing their behaviour to make great use of bird feeders). Over the past 20-30 years, more and more blackcaps are overwintering in the UK and fewer migrating to more southern warmer climes. This may, in part, be due to climate change.

There are other hungry times as well. Thirty years ago we used to get lots of grey partridges but not anymore. It's another species where the population has crashed, but they did very well from the rise of arable farming over the past few hundred years. Grey partridge chicks, unlike their close cousins the red-legged partridge, need to feed on insects when they are two/three weeks old and their target food lives along field margins. Some really detailed research has shown that the insects that the chicks need require broad-leaved plants to feed and breed on – but, with the use of herbicides to treat broad-leaved plants (increasingly common since the 1960s), many young wild grey partridges starve to death in the summer.

Some great work is being done to try and reverse the trend.

You may have seen some of the work going on in Grove Wood and the fields nearby. We have sown some 900 square metres of wildflower seeds, planted many seedling plugs and put in nine bank extensions in the river to help improve the sides of the river and speed up the flow. This was discussed at the meeting in the village hall in the middle of November, together with a fascinating presentation about otters by Tony Hall – whose talk goes to show what can be achieved with a great amount of patience and persistence. Thanks to the Bristol and Avon River Trust for organising all the permits for the work and getting lots of volunteers to help. There is still lots more to do especially on the river upstream from Stretchline.

The Scouts have made another batch of great nest boxes for owls (thank you) which will be going up in the next few weeks. If you have a large tree away from any roads and would like one, please let me know. It's free and we come and install it. All that we ask is that it's left alone!!

Finally – get your birdfeeders out now, make sure they are topped up and please give them a good wash every week or so to stop the spread of fungal infections. Greenfinches have really suffered.

If you see anything interesting please let me know – 840995 or [geoff\\_carss@hotmail.com](mailto:geoff_carss@hotmail.com).

Geoff Carss

# Sherston School Waitrose Tokens

A huge thank you to all the Waitrose shoppers in the community who put their green tokens into the Sherston Primary School box. The school will be awarded an amazing £312, which will be a great boost to our fundraising goal this year help so that we can extend the fitness trail.

## Busy Hands Quiz: Tickets on sale!

Tickets for the annual Busy Hands Quiz – to be held on Saturday 7 February 2016 – go on sale later this month! Pick yours up for just £20 for a team of four from Sophie Cheetham ([sophcheetham@gmail.com](mailto:sophcheetham@gmail.com) or 07786 990045). Tickets always sell fast so don't hang about!

Prizes for the auction and raffle are already rolling in, including a valet at Tom's Car Wash, cream tea for two at Whatley Manor, golf for two (with buggy) from Castle Combe Manor, a Dyson Animal and an MOT at Gray's of Sherston.



Nestled in pastureland on the outskirts of Sherston.

Three lovely double, en-suite rooms.

Peaceful and private, separate from main house.

Alastair  
**Sanday's**



tripadvisor

Luckington Road, Sherston.  
01666 841445

[www.carriersfarm.co.uk](http://www.carriersfarm.co.uk)  
[info@carriersfarm.co.uk](mailto:info@carriersfarm.co.uk)



Freelance  
**Tetbury Bookkeeper**  
**Philippa Lark**

\* Local References \*

Keep accountancy costs down with excellent quality bookkeeping records

[www.tetburybookkeeper.co.uk](http://www.tetburybookkeeper.co.uk)  
01666 505824  
07771 914512

## MAN FOR ALL SEASONS

*WILL UNDERTAKE  
ALL HOUSE/GARDEN  
MAINTENANCE  
NO JOB TOO SMALL*

*From*

CUTTING HEDGES,  
WEEDING THE GARDEN  
& CUTTING DOWN TREES  
*To*

PAINTING & SMALL JOBS  
IN THE HOUSE

ALL MACHINERY PROVIDED  
- LOG SPLITTER AVAILABLE

**01666 825463**

# Alderton village Pond and Green

The villagers of Alderton have just completed a project to remove nearly 50,000 gallons (over 200,000 litres) of silt which has accumulated since the pond was last cleaned 22 years ago. At the same time the walls of the pond have been repaired, the fences painted and the area generally tidied up.

The pond is an important part of the local drainage system with surplus water from the local farm land channeled through culverts into the South East corner. The exit drain is near to the crossroads. A survey revealed that the silt was up to 90cms deep.

The Pond and Green is owned by local Trustees on behalf of all the villagers of Alderton and is home to around 20 different species of duck.

The work on the pond involved 296 hours of voluntary labour which was provided by local villagers and the very kind assistance of the Cotswold Wardens. A 4000 gallon tanker lorry and a jetvac vehicle were provided by William Gilder Ltd. The structural repairs to the walls were undertaken by Andy Witt Builders Ltd.

The project was funded by grants of £10,000 from Awards for All (the National Lottery), £4,000 from The Hills Group Ltd and £500 from Luckington and Alderton Parish Council. The funds from Hills Group Ltd were made available through the Landfill Communities Fund which is administered for Hills Group by Community First, the Rural Community Council for Wiltshire.

*By George Lynham Trustee & Treasurer, Alderton Village Pond & Green*



Allington Bar Farm,  
Chippenham, SN14 6LJ  
Tel: 01249 658112

Open 7 days 9am – 6pm  
Mon – Sat  
& 10am – 5pm on Sundays.

## Quality Local Produce

**Home produced Pork, Lamb, Beef & Goat**  
Home Made Sausages & Burgers  
Local Free Range Poultry  
**All available daily from our Butchery**

**Locally made Preserves, Chutneys & Pickles**

Somerset Jersey Organic Milk & Cream  
**Local Cheeses & Home Cooked Meats**

Extensive range of local Ice Cream  
**Locally Grown Fresh Fruit & Vegetables**  
Homemade Cakes & Pies  
**and many more local ingredients .....**

**The Baraka Catering Company Ltd.**  
[www.barakacatering.co.uk](http://www.barakacatering.co.uk)



Catering for ALL events large & small  
Delicious Homemade Canapés  
Supper Parties  
Gourmet Barbeques  
Weddings, Birthdays & Christenings

Please don't hesitate to call Camilla on 07734 251 075  
Or email [camilla@barakacatering.co.uk](mailto:camilla@barakacatering.co.uk)  
with any orders, questions etc.

# Sherston Post Office - Get Ready for Christmas!

## Opening Times

We are pleased to serve you any time between 7.00am to 6.00pm Monday to Friday and from 8.00am to 1.00pm on Saturday. No other post office in the vicinity offers this service. The only time we would recommend you avoid is between 4.00pm and 5.00pm each day when businesses call and queues are likely.

## Posting Abroad Weighty Problem

If possible, avoid sending items over 2kg abroad or it could cost you dear. A cheaper option could be to 'split' the parcel or choose something lighter, eg:

	1.9kg Royal Mail	2.1kg Royal Mail	2.1kg Parcelforce	Difference
Europe	£13.46	n/a	£24.66	£ 11.20
USA	£19.75	n/a	£41.25	£21.50
Australia	£21.50	n/a	£58.65	£37.15

## Last Recommended Airmail Posting Dates

Friday 4 December	Africa / Middle East
Monday 7 December	Far East / Asia / East. Europe
Tuesday 8 Dec	Caribbean / S America
Thursday 10 December	Australia / NZ / Greece
Friday 11 December	BFPO (static)
Monday 14 Dec	Germany / Italy Poland
Tuesday 15 Dec	USA / Canada / Sweden
Wednesday 16 Dec	Ireland / Spain / Portugal
Thursday 17 Dec	France
Friday 18 Dec	Holland / Switz / Belgium

## Posting within the UK

### Valuable Gifts

1st and 2nd class post only carry compensation of £20. 'Signed For' provides cover up to £50 but without tracking. Increased cover and end-to-end tracking can be arranged for Special Delivery, and Parcelforce.

**Special Delivery is the only service that provides compensation for cash or gift vouchers**

### Size and Weight Matters

The cost of a 'Small Parcel' up to 2Kg is only £2.80 2nd class. If the parcel weighs more than 2Kg the cost increases to £12.98 – a huge difference!. For a 'Small Parcel', think of a large shoe box as a rough guide. Better still, ask at the counter for guidance.

## Last Recommended Posting Dates

Saturday 19 December	Second Class
Monday 21 December	First Class
Wednesday 23 December	Special Delivery / Parcelforce Next Day

# Cinderella



Sherston Drama Group's production of Cinderella by Ben Crocker delighted large audiences in the village hall last month. Set by director Sue Lehrer in the 1980s, Cinderella, of course, is the one pantomime where the young hero doesn't get the girl. A lively and engaging Buttons is thus essential, and Dominic Evans filled the role perfectly. Katie Pyle gave us a Cinderella with whom anyone would fall in love, and had no trouble in capturing Prince Charming, played with a radiant authority by Ella Moriarty. Luke Tappin, as Prince Charming's valet Dandini, maintained his cheeky demeanour in spite of being subjected to the amorous attentions of the Ugly Sisters for much of the pantomime. And ugly they certainly were! Riaan Van Rooyen and Kevin Smith produced wonderfully over-the-top performances in everything they did, whether dancing with the chorus, riding scooters to celebrate their expulsion from school, or trying to beautify themselves using a variety of disgusting substances. As their mother, Lady Devilia Hardup, Sue Ormiston generated the perfect mixture of glamour and evil, while Richard Skeffington as her hapless husband Baron Hardup made it clear why he married her in the first place, one of the long-standing mysteries of Cinderella. But the fairy godmother, played with a remarkable Southern Belle accent by Kirstie Blair, made everyone's lives better in the end. Ollie Tappin and André Van Rooyen were the broker's men Snitch and Snatch, serenely self-confident in spite of various disasters. Shaun Scott and Richard Warren were wisecracking Village Hall caretakers, and Emma Smee as the Major Domo ably kept order at the dance. Sophie Coleman and Rebecca Straughen did a superb job as the racehorse (or maybe racepony) Dashing Dumpling. Finally





*Photos by Marc Lehrer and Paul Ormiston*

Sherston's youngest performers, Fearn Blair, Charlie Blows, Ella Bray, Sophie Coleman, Jessica Elms, Oscar Power, Leon Shortridge, Emma Sme, Rebecca Straughen and Libby Watson worked hard in the chorus parts, and presented us with some remarkably accomplished dancing, a tribute to the effort put in by choreographer Sarah Cowell. Oscar Power should also be congratulated on winning the Malcolm Jarrett award for most improved chorus member. A huge effort goes on behind the scenes to make all this happen, and there is only space to mention assistant director Finlay

Evans; producer Kirstie Blair; Kate Sme and her stage crew; prompters Hazel Jarrett and Christine Massey; fantastic costumes from Tahiti Van Rooyen, Suzie Power, Ann Lawrence and Carey Smith; set painting by Sue Ormiston; make-up by Debbie Luter, Dawn Jago and the mums; lighting and sound from Ewan Blair and Paul Ormiston respectively; some amazing props from Shaun Bray; box office by Vee Skeffington; and Caty Tappin and her crew for Front of House.

We are told the Spring Play just after Easter will be a comedy thriller – watch this space!

PLEASE MENTION TO ADVERTISERS THAT YOU SAW THEIR ADVERT HERE FIRST

# Sherston School's Mythical Max



After winning a competition, Sherston schoolboy Max Lees was the envy of his classmates last month, when he appeared as Mythical Max on the back cover of The Beano. Not only that, he also got to travel up to The Beano offices in Dundee and help to create the cartoon strip. 'The whole thing was amazing!', said Max, aged eight. He continued: 'My favourite part was getting to colour in the cartoon all about me.'

## TH WHITE COUNTRY STORE

**Gardening Equipment, Country Clothing,  
Safety Footwear, Animal Feeds,  
Household Cleaning Products  
Britains Toys, Tools and Ironmongery.**

**Open to Trade and General Public**

Monday to Friday 8.00 am to 5.30pm  
Saturday 8.00 am to 12.00 Noon

**Wishing all our  
Customers a  
Merry Christmas**

**Now  
Stocking  
Christmas  
Lights**

**HULL  
CARTRIDGE**

**Hull  
Shotgun  
Cartridges**

**Anti-freeze,  
Screen wash  
& De-icer**

**Large Selection of  
Britains Toys**

**BRITAINS**®



**Now in  
Stock  
Logs &  
Kindling**



Sherston Works, Knockdown, Nr Tetbury, Glos. GL8 8QY  
On the A433 between Tetbury & Didmorton

Tel: 01454 238181 Fax: 01454 238772  
www.thwhite.co.uk

**sharpes**  
WINDOWS AND DOORS

*Affordable, Quality Double Glazing*

We provide an affordable and quality double glazing service that you can rely on.

- Windows
- Doors
- Replacement Glass
- Repairs and Replacements
- PVCu, Aluminium and Composite Products



Windows  
It Doors



PLANITHERM  
Installer Network



**Tel: 01666 840 042 Mob: 07720 717 902**  
www.sharpeswindowsanddoors.co.uk

## North Wilt's Villages Flower Club

### October meeting

At our October meeting we welcomed Ann Anson who demonstrated a variety of autumnal-themed arrangements, whilst talking of her life in flower arranging which has taken her from arranging in village halls to country houses with amusing stories to tell along the way.

### Future meetings

16 December will see our annual Christmas workshop and 'bring and share' supper. During this relaxed social evening, members can create their own Christmas designs.

20 January will be the date for our first meeting of 2016. Lucy Ellis will demonstrate under the title of 'To the Manor Born'. The second round of our competition will be a decorated candle stick. All are welcome to enter.

### Looking back

The beginner's flower arranging class that has been running for the past few weeks has now come to an end. Following the success of the class, we plan to carry it on next spring.

In October Jonathan Moseley, well respected international demonstrator, travelled from Derbyshire to lead another very well-attended day workshop. Those who attended were able to try their hand at one or two of the arrangements that Jonathan had demonstrated. With guidance and support from our tutor, many delightful arrangements were created.

Jonathan also demonstrated at a fundraising evening at Country Baskets in Bristol organised by a club member. The evening raised £700 which has been shared between Prostate and Breast Cancer charities.

Flower club meetings take place at Crudwell Village Hall SN16 9HB on the third Wednesday of the month, 7.00pm for 7.30pm. If you enjoy flowers, come and join us, visitors and new members are always welcome.

For more information please contact Margaret on 01285 770 639



### SHERSTON CONGREGATIONAL CHURCH Meeting in the British School Room December Services

6th December 4.00pm	All Age Service Andrew Williams Tarling
13th December 11.00am	Communion Service Andrew Williams Tarling
20th December 11.00am	Christmas Service Andrew Williams Tarling
27nd December 10.30am	All Age Service With Sherston Methodist Chapel

## Sherston Market

The next market is on Saturday 12 December at Sherston Village Hall from 10.00am to 2.00pm. We have a very full market lined up for you and, with Christmas just around the corner, there will be plenty of seasonal items to peruse.

The café will be serving up some enticing and delicious food to tempt you both to eat in or to take away. Not only will we have our very popular vegetarian curry with naan bread but also our sought-after bacon butties and delicious homemade soup.

Santa will also be making an appearance in his grotto so don't miss him! (see page 3)

At all markets at least one free stall is offered for a charity or voluntary group to raise funds. Anyone interested in running such a stall should please use the contacts below. All these stalls have done well to date so don't be shy in booking one! December's is in support of the charity For – Ethiopia [www.for-ethiopia.com](http://www.for-ethiopia.com)

For those on Facebook, there is an active Sheraton Market page with lots of information about our stallholders and their products. Please also visit our new website [www.sherstonmarket.co.uk](http://www.sherstonmarket.co.uk) which lists details of which stallholders are attending the next market.

If you are a local maker, baker, grower or producer and are interested in taking a stall please either use the contact form on the web site, phone 07887 814843 / 07769 613627 or email [info@awkwardsquad.co.uk](mailto:info@awkwardsquad.co.uk)

## Beautiful two bedroom holiday cottage for rent in Cornwall

The Boathouse is an idyllic cottage on the spectacular Fowey River Estuary, just two miles from Fowey and a step away from the water's edge.

A converted boathouse and lime kiln, the cottage is one of the oldest buildings in the picturesque village of Golant.

Comfortable and welcoming with magnificent views across the river, there is a log fire for cosy winter holidays and a private terrace ideal for spring and summer barbecues.

Sleeps Four + Cot

Please see the website for full details:  
[www.theboathousecornwall.co.uk/](http://www.theboathousecornwall.co.uk/)

or alternatively call / email

+44 (0)7980 014 471

[info@theboathousecornwall.co.uk](mailto:info@theboathousecornwall.co.uk)

## Forever Friends Appeal's walk celebrates a decade of support!

The Forever Friends Appeal's 'Walk of Life' is about to celebrate a milestone 10-year anniversary: the 10th annual Walk of Life will take place on Saturday 14 May 2016.

The Walk of Life, proudly sponsored by Kier Construction, is an annual event that challenges men and women across Bath, Somerset and Wiltshire to walk 21 miles along the Kennet and Avon canal starting in Devizes and ending in Bath. Walkers can choose to raise funds for the RUH Cancer Care Campaign, or a ward or department of their choice at Bath's Royal United Hospital. If 21 miles sounds too great a challenge, walkers can opt to walk 9 or 12 miles instead.

The 2015 Walk of Life was a huge success, raising over £30,000 for both the RUH Cancer Care Campaign and other wards and departments at the hospital.

The walk was created in 2008 in memory of Vanessa Kyte – a remarkably inspirational mum, daughter, sister, wife and friend who was diagnosed with cancer in the year 2000. Seven years on, Vanessa passed away at her home in Rudge with her family around her.

Vanessa's sister Nic Noble comments: 'It was 10 years ago when my sister Ness and I first approached Nina Rack, the former Corporate Officer at the Appeal, with an idea to hold a fundraising walk around the RUH's catchment area to raise money for a new Cancer Centre at the hospital.'

Nic continues: 'Never in my wildest dreams did we imagine the walk would be so successful. Since 2006 the Walk of Life has managed to raise over £255,000 for the RUH Cancer Care Campaign as well as other wards

and departments at the RUH. So please join us on Saturday 14 May 2016 in a walk that has become a legacy to my beautiful strong sister, Nessa.'

The Forever Friends Appeal's RUH Cancer Care Campaign is raising £8.5million towards the building of a pioneering new Cancer Centre. This Cancer Centre will be a state-of-the-art building, with every part designed around the needs of patients with different forms of cancer. It will transform care for patients and their families at the RUH.

Early bird registrations are now open for the 2016 Walk of Life at a discounted price of £15 per place when you sign up online via The Forever Friends website before 31 January 2016.

Volunteer marshals are located on various locations along the Walk of Life route – handing out water, refreshments and encouragement. Please contact the Appeal if you would like to volunteer your time to help marshal at the event. To sign up for the 2016 Walk of Life online visit [www.foreverfriendsappeal.co.uk](http://www.foreverfriendsappeal.co.uk) or call the events team on 01225 825823 for more information.



**PAWS FOR THOUGHT**

**PROFESSIONAL DOG WALKING AND MINDING SERVICE**

- Bespoke service for you & your dog
- Experience in handling both large & small dogs
- Fully insured in all aspects of dog care
- Knowledgeable in canine first aid, training and obedience
- Group or individual walks available
- Established & recommended for 6 years

**Animal Minding Service** also available for cats & domestic pets. Animals are happier & more secure in their own environment. Daily visits provided to include feeding, grooming, tlc & medication if required.

**Please call Sophie Francis on 01666 840538 or 07531 057016**

References available on request

Do you want to know  
**YOUR FAMILY HISTORY**

Skeletons in the cupboard, convicts, statesmen, rich man, poor man, beggar man, thief? We all have them and they are hiding there waiting to be found.

Let me find them for you.

**Beryl Clampton**

Call anytime: 01666 841201 or 07850 623517  
e-mail: [beryl@clampton.com](mailto:beryl@clampton.com)

**Firewood**

*Dry seasoned, hardwood logs  
Barn stored  
any size available  
Also kindling sold in nets  
Delivered to your door*

For more details call Steve on  
**01454 232941 or 07974194012**

# Village hall 300+ club

## November 2015 Draw

1st	170	Warwick Jones	£13
2nd	44	Jean Poole	£12
3rd	8	Brian Willby	£11
4th	123	Peggy Thompson	£10
5th	57	Tom Dryden	£9
6th	221	Brenda Llewellyn	£8
7th	64	Jill Ashley	£7

Collectors: A Andrews, M Goulding, A Lyall, G Mason, P Moody, R Moody, J Platts, L Prior, and M Thacker.

The January draw will be held when all the subs for 2016 have been collected. We will start collecting in December and hopefully will have finished by the end of February. If you are out when we call, a form will be left for you to complete. This can be handed in, with the sub, at the post office, as in previous years. The sub remains the same at £6 per person for the year.

If you would like to become a member, there are new member forms for completion at the post office, or ring Lin Prior on 840846.

Every little helps support the village hall. Thank you for yours!

## Optimum Mobility

of Malmesbury



Also walking aids, bathing & household aids  
The Old Dairy, Pinkney Park, Near Sherston  
**01666 840060**  
[www.optimummobility.co.uk](http://www.optimummobility.co.uk)

## Rabbit and Squirrel Control

For a professional service call

**07766 132934**

**01285 770968**

**Fully Insured and references available**

**Derek James Scott**  
GARDEN DESIGN & LANDSCAPING LTD

**We Design, We Build  
Beautiful Gardens...**

 [www.derekjamescott.com](http://www.derekjamescott.com)  
 **Tel: 01666 213108**



Bradstone Assured Member



Hair and Nails @ 44  
44 High Street  
Malmesbury  
01666 823285  
[www.hairandnailsat44.co.uk](http://www.hairandnailsat44.co.uk)

Visit our modern and contemporary salon in the High Street, Malmesbury for:

- ✦ Hair@44 with Serena our Senior Stylist
- ✦ Nails@44 with Stacey our Senior Nail Technician (acrylics, gels and designer)
- ✦ Beauty@44 featuring eyelashes and eyebrows, facials and make-up
- ✦ Ear Piercing@44 using the Caflon technique

We are very happy to quote for all your Bridal requirements, Pamper Parties and Prom preparation

For more information and to book an appointment please phone, or see our website or Facebook  page

# lucy tom

## HANDMADE CURTAINS, BLINDS AND HOME FURNISHING ACCESSORIES

We specialise in handmade curtains, blinds and interior accessories. A personal service is offered with home visits and free quotations.

We have a wide range of fabrics and wallpapers available to suit all budgets.

Curtains, roman blinds, cushions, throws, loose covers, headboards, curtain poles, tracks and anything else required.

**Mobile:** 07813 877509 **Workshop:** 01666 238925

**Email:** [lucytominteriors@gmail.com](mailto:lucytominteriors@gmail.com)

# Groups and Regular Events in and around Sherston

## Holy Cross Church

**The Coffee Shop** - Fair Trade tea and coffee with homemade biscuits biscuits and brownies - Open Thursday mornings only to Easter 9.30 am - 12 noon

**Sunday services** 8.00am Holy Communion; 9.30am Holy Communion (3rd Sunday 9.30am Family Service); 6pm Evensong (3rd Sunday Evening Holy Communion from the Book of Common Prayer) See the Parish Life for more details

**Mustard Seeds** is a Saturday morning club for children aged 4 and over, from 10am - 12noon once a month.

## Congregational Church - in The British

**Schoolroom** 1st Sun we visit local Churches together. 2nd Sun 11am. Visiting Speaker. 3rd Sun 4pm Family Friendly Service. 4th Sun 4pm Children's Church. 5th Sun we worship elsewhere. All services are led or hosted by Pastor Andrew Williams-Tarling Contact awtcharfield@hotmail.co.uk or 07921 390878 (or find us on Facebook.).

**Methodist Church** Services every Sunday at 10.30am apart from 3rd Sunday in the month when service is held at Luckington. For further details see the Parish Life

## Gauzebrook Church for Children

Children are welcome at all the services which are held in the Gauzebrook Group churches but there are some occasions which are particularly for them: **Junior Church** is held at Court House, Hullavington. This is for children from 3 to 11+. Any children under 3 need to be accompanied by an adult.

Contact Becky Fisher 07974 030212 or becky.fisher@deanery.org.uk

**Little Lights** Every Thurs, 10.30 am in Hullavington church. Children aged 0-5 and their parents/carers come from across the Group, including Sherston, for songs, crafts, activities, Bible stories and snack time. Any questions, contact Chantal on 837522

## Easton Grey Parish Church

See Parish Life for details of services

## Sunday Newspapers

On sale 8am - 11am every Sunday in Sherston village hall.

**Link** provides a voluntary car service for residents living in the Malmesbury area, taking those in need to hospital, the chiropodist, GPs' surgeries and to visit sick relatives. For further information please call 840861 between 9am and 1pm Monday to Friday.

## Ancient Order of Sherston Mangold Hurlers

Why not join us and discover the joys of mangold hurling and all its traditions? For further information email ebeplaced@aol.com.

**Busy Hands Pre-school** Meets 9.10am - 12.10pm everyday in the village hall for 2 3/4 - 5 year olds. Lunch Club Mon to Fri until 1pm and exciting new outdoor free flow area. All childcare vouchers welcomed. For further details call Henry Crawford on 841065 www.sherstonbusyhands.org.uk or email us on chair@sherstonbusyhands.org.uk

**Castle Combe Colts Football Club** Join a charter standard club with CRB checked FA qualified coaches, fantastic playing & training facilities and a healthy inclusive culture - take a free 4 week taster session. Currently recruiting for the following age groups: Mini-Kickers (Rec/Y1) U10 (Y5) U11 (Y6). Tel 837286 or secretary@cccfc.co.uk www.cccfc.co.uk

**Charity Bingo** In aid of a different local charity each month on the 3rd Friday at 7.30 for 8pm start in the village hall. 50p entry and 30p a book. Light refreshments available.

**Church bell ringing** Practices are every Wednesday 7.30 - 9.00pm. Call Geoff Martin 840375 or come along.

**Clem's Club** Meets 2nd & 4th Tuesdays Feb to June and Sept to Dec 2.30pm - 4 pm in the British Schoolroom (alternating with the Senior Club). All friendly fellas welcome for simple char and chat.

**Dance classes at The Scout Hut** Fun and friendly classes for children to learn ballet and/or jazz on Tuesday afternoons during term time Preschool/infant ballet 3.30 - 4pm, Jazz 4 - 4.30pm. Junior ballet 4.30 - 5pm, Jazz 5 - 5.30pm All abilities welcome. For more information please call Abigail on 07720 396195.

## Drawing Classes in Sherston

Classes are held in the British Schoolroom during term times Weds either 10am to 12noon or 1.30 to 3.30pm. Students have individual attention and the classes are friendly and welcoming. We work on observational drawing in a range of media, pencil, watercolour crayon and pastel; subjects include plants and flowers, natural objects and still life groups. For further information please contact Heather Martin heather@geoffmartin.plus.com or phone 840375

**Eudo Tae Kwon Do** Thursdays 7-9pm in Sherston primary school hall. For details contact Simon Penfold 824773.

**Footpaths group** The group has published the booklet 'Sherston Walks - a new guide to local rights of way', featuring 10 local walks and is now on sale at the post office. If you would like to learn more about the footpath group and perhaps take part in some of its activities please come along to a meeting. For further information contact Maggie Harries on 841047 or maggie@harriespartnership.com

**Forest School Club** Weekly outdoor activities during term time at both Sherston and Luckington School and further fun extended sessions during school holidays. For further information please contact nikiwalden-forestschool@hotmail.co.uk

**Fresh Air Fitness** A fun outdoor workout suitable for all levels. Sherston Rec Fridays 9.30-10.30am £6 per class. Book with Stuart 07986 003602 / 01453 836173 or stuart@pulse4life.co.uk

**FSS Winter Games Club** Board games and cards in the Scout Hut Fridays 3.15-5.15pm from 6 Nov. £1 per child including squash and a biscuit. Coffee and a catch-up corner for adults, all in aid of Friends of Sherston School. For more details contact Sophie Cheetham (sophcheetham@gmail.com) or Alex Evelyn (alexrevelyn@gmail.com)

**Hogwards** The Help a Hedgehog Hospital charity has a satellite hospital in Tetbury. Mary Hinton 07779 299224 www.helpahedgehog.org

**Ingleburn Trefoil Guild** Meets on the 3rd Monday of the month, usually at St. Mary's School Tetbury at 7.30 p.m. Lifts are available for non-drivers in the Sherston/Malmesbury area. Details from Helen Price, 503187 or retreatcottage17@btinternet.com

## Malmesbury Area Board Meeting

For details see www.wiltshire.gov.uk/areaboards

**Malmesbury Concert Band** Rehearsals on Fri evenings in Malmesbury, 7.15 - 9.15pm. The band performs at local Bandstands, public concerts, etc. and is always on the look-out for brass and woodwind players (and percussion and string bass or bass guitar) of reasonable sight-reading ability. For further details and to ascertain current vacancies see our website <http://www.freewebs.com/malmesburyconcertband/> and/or contact Tony Fleming, the Musical Director, on 575229 or tony@jacfleming.plus.com

## Malmesbury Community Choir

The Malmesbury Community Choir is a non-audition performing choir that meets for rehearsals in the Old School Room at the Town Hall every Monday evening from 7.30-9.30pm. The waiting list is currently full for ladies, but we would always welcome extra men and young people between 14-21 years old. Membership is £50 per quarter, but membership for U18s is free and U21s is half price. For further information please email [info@malmesburycommunitychoir.org](mailto:info@malmesburycommunitychoir.org), visit the website at [www.malmesburycommunitychoir.org](http://www.malmesburycommunitychoir.org) or [www.facebook.com/MalmesburyCommunityChoir](http://www.facebook.com/MalmesburyCommunityChoir).

## Malmesbury Embroiderer's Guild

The local branch holds monthly meetings at Little Somerford Village Hall. On alternate months there are Saturday workshops on a wide range of topics, and on the intervening dates there is a Tuesday evening talk at 7.30pm. We always welcome newcomers and occasional visitors, although prebooking is essential for the workshops. Just turn up for the talks - non members £5. For further information please phone Heather Martin 840375 or [www.malmesburyembroiderers.blogspot.com](http://www.malmesburyembroiderers.blogspot.com)

**Malmesbury Luncheon Club** Over 60s meet every Wednesday at midday in the Wesleyan Room of Malmesbury Town Hall for a chat and a 2 course lunch followed by tea or coffee. £3.50. Please call Helen Churchill on 840080 if you'd like to attend. New members most welcome. Volunteers also needed to prepare and serve lunch, no washing up.

**Malmesbury Film Society** Memorable new, classic and foreign films are shown at 7.30pm every 3rd Sunday of the month at St. Mary's Hall, Malmesbury - no booking or membership necessary. Join us for unique films and an enjoyable evening out. See our website [www.malmesburyfilmsociety.org.uk](http://www.malmesburyfilmsociety.org.uk) for details on all upcoming films.

**Malmesbury Villages Community Partnership** For details contact Woody Allen 390110 mark.allen@allenclan.co.uk

**Malmesbury Rainbows, Brownies & Guides** For details contact the Division Commissioner at malmesbury@wncounty.org.uk

## North Wiltshire Villages Flower Club

(affiliated to National Association of Flower Arrangement Societies - NAFAS) meets at 7.30pm on the third Wed evening of most months of the year at Crudwell Village Hall. Join members come from the surrounding villages to hear speakers and enjoy floristry demonstrations and do workshops and competitions. Call Margaret Stanford on 01285 770 639 to answer any queries or give information about forthcoming events.

**Parish Council Meeting** Takes place on the 2nd Thursday each month at 7.30pm in the village hall. Minutes of meetings can be read online at [www.sherston.org.uk](http://www.sherston.org.uk). Further details contact Sarah Wood on 840197 or [clerk@sherston.org.uk](mailto:clerk@sherston.org.uk)

**The Rattlebone Boules League** Consists of 48 teams playing in 3 Leagues. Contact Tony Towle on 840574.

**Red Bull Inn Boules** Friendly boules club at the Red Bull Inn (Malmesbury Rd) - meets every Thurs at 7.15pm - any level. For the more competitive members, there is a team playing in the Cotswold Pétanque league. To enter, please contact Sue McKechnie on 840601 or [susannemckechnie@hotmail.com](mailto:susannemckechnie@hotmail.com)

**Senior Club** Meets at 2.30pm in the British School Room every other Tuesday alternating with Clem's Club.

**Sherston 1016** Fundraising for local good causes and charities. Contact [sherston1016@gmail.com](mailto:sherston1016@gmail.com) or Martin Jacques 07717 424619

**Sherston Badminton Club** We play every Tuesday evening from 7.30pm in the Village Hall from September to the end of May. - New members welcome. For more information contact Ray Clifton on 840592

**Sherston Brownies** Meet every Wednesday during term time 5.45 - 7pm in the Scout Hut. All girls are welcome to join after their 7th birthday, but there is a waiting list. Visit [www.girlguiding.org.uk](http://www.girlguiding.org.uk) and follow the parents link to register your interest, for all other queries contact Tawny Owl (Nicky) at [nicky.gray@btinternet.com](mailto:nicky.gray@btinternet.com)

## 1st Sherston Cub Scout Pack

Membership of the Cub Pack is open to those between 8 and 10 ½ years old. The Pack has regular meetings on Friday nights in term times from 6.30pm to 8.00pm. There is a waiting list for Cubs, and those interested should contact Greg Hughes, Baghera, Cub Scout Assistant Leader, [greghughes\\_2000@yahoo.co.uk](mailto:greghughes_2000@yahoo.co.uk) to obtain an application form

## 1st Sherston (John Rattlebone) Scout Troop

Is open to young people from the village and surrounding parish from the ages of 10 ½ to 13 ½. We meet at the Scout hut on Tuesday nights from 7.00pm to 9.00pm during school term times. To join contact Riaan van Rooyen [riaan@pulse-software.co.uk](mailto:riaan@pulse-software.co.uk) There is currently a small waiting list to join.

## Sherston Whitewall Explorers

You don't need to have previously been a member of scouts or guides to join us, just be aged between 13 ½ and 18 and free between 8.30 and 10pm on a Friday night during term time; for further information please contact Darren Walsh - 841043 or Ewan Blair - 840096 - [whitewallexplorers@googlemail.com](mailto:whitewallexplorers@googlemail.com)

**Westonbirt Guides** Meet in Querns Hall, Rosehill School, Westonbirt 5pm - 7pm every Wednesday. Sherston Brownies tend to come along if they don't join Scouts. Details from Ann Bye, 01454 218152, [ann.bye@virgin.net](mailto:ann.bye@virgin.net)

## Sherston Drama Group

The Drama group puts on plays and pantomimes in the Village Hall. If you are interested in taking part or helping out contact Richard Skeffington (Chairman) [r.a.skeffington@gmail.com](mailto:r.a.skeffington@gmail.com) Tel. 840092

**Sherston FC** The club play in the Stroud league at Knockdown Park on Saturday afternoons - spectators and new players welcome. Contact Pete Brock on 07912 777647 or [peter.brock666@btinternet.com](mailto:peter.brock666@btinternet.com)

## Sherston Ladies' Swimming Club

Want to get fit? Lose weight? Our Club is a friendly and sociable group open to any ladies of any swimming ability from Sherston and the surrounding area. We swim at Westonbirt Leisure Centre on Wednesday evenings from 8 - 9 pm. Everyone swims at their own pace although there is a lane for faster swimmers. It costs £5 per week, £40 for 10 weeks. For further information please phone Maggie (840969), Annabel on 840592 or Heather (840375).

## Sherston's Living Churchyard

Please help maintain the living churchyard on the second Wednesday of the month from 2pm to 4pm, weather permitting. Please check with Sue for timings each month. Church of the Holy Cross Further details contact Sue Robinson on 841263

**Sherston Magna Cricket Club** Junior nets have now finished for the season, but u15s are welcome to Senior nets at 6.30pm on Tues nights at Pinkney Park. If you would like to get

involved with local cricket please email [cricket@sherstonmagnacc.co.uk](mailto:cricket@sherstonmagnacc.co.uk) or visit the website [www.sherstonmagnacc.co.uk](http://www.sherstonmagnacc.co.uk)

**Sherston Netball Club** Training every Monday 7.30pm at Westonbirt Leisure Centre. All ages and abilities welcome. £3 per session. For more info, please contact Ailsa (07971 845206), Lauren (07885 597429), Saara (07739 552336) or Kate (07792 064438).

**SH.O.C.C.** The choir meets at 7.30pm each Wednesday in the British Schoolroom £3 per session - New term starts Wed 9 Sep refreshments 50p. Further information from Lucy Lawrance on 840778 (evenings) or [lucy@sherston.plus.com](mailto:lucy@sherston.plus.com)

## Sherston Photography Forum

A monthly group has formed in Sherston for anyone with an interest in photography 2nd Tuesday of each month at 7.30pm in the Village Hall. For details call Nick Holland on 841019 or [nholland63@btinternet.com](mailto:nholland63@btinternet.com)

**Sherston Pilates** Classes held on Wednesday afternoons and evenings in the village hall. Run by Saara Sharman, Chartered Physiotherapist. All ages and abilities welcome. For more details contact Saara on 07739552336 or [sherstonpilates@gmail.com](mailto:sherstonpilates@gmail.com)

**Sherston Tennis Club** The tennis courts are located on Knockdown Road, open to all over the winter. Children's Sat am coaching will start after Easter. If you would like to be emailed with details nearer the time, please contact Sophie Cheetham on 07786 990045 or [sophcheetham@gmail.com](mailto:sophcheetham@gmail.com). If you're interested in joining the club or using the courts, please contact Nic Riley on 840682 or [nic50riley@gmail.com](mailto:nic50riley@gmail.com).

**Sherston Theatre Club** Excursions with a Sherston High Street-to-venue return coach service. Annual fee £20. Listings under [www.communitate.co.uk/wilts/sherstontheatreclub/](http://www.communitate.co.uk/wilts/sherstontheatreclub/) or contact Helen Quirk on 840516 or [helenandjim@thequirks.plus.com](mailto:helenandjim@thequirks.plus.com)

## Sherston Toddler and Baby Group

The group is a fun way for babies, toddlers and their parents to meet and play. We meet at 10 -11.30am each Tuesday in the Scout Hut with toys for all stages from wrigglers to toddlers, craft activities, music and snacks for all, not to mention a much-needed cup of tea/coffee for the deserving parent. Further details contact Sophie Cheetham, [sophcheetham@gmail.com](mailto:sophcheetham@gmail.com) 07786 990045 or alternative like us on Facebook for regular updates [www.facebook.com/sherston.toddlers](http://www.facebook.com/sherston.toddlers)

**Sherston Velo** A new cycling club formed of enthusiastic road cyclists from Sherston and the surrounding area - formally accredited by British Cycling at the end of 2014. There are regular rides each Saturday and Sunday morning with a fast paced group leaving first for an hour, followed by a longer club run. For membership and other information about the club, visit the website [www.sherstonvelo.cc](http://www.sherstonvelo.cc) or email Mark Walsh at [secretary@sherstonvelo.cc](mailto:secretary@sherstonvelo.cc)

**Sherston Village Hall** Available for hire by all. Ideal for meetings, events, parties etc. For details Chris and Tony Weedon 841377 or email [dogleg3@gmail.com](mailto:dogleg3@gmail.com)

**Sherston W.I.** Meetings on first Thursday of month SMar - Sept in the Village Hall at 7.30pm and Nov/Dec/Jan in the British Schoolroom at 2.30pm. No meetings Oct or Jan. Visitors always most welcome £3.50. Further information: Secretary 840578

**Sherston Young Craft Group** Every Monday 6.45 - 8.15pm in the village hall (children 9 years and over). £3 (incl all materials) per evening paid in advance of each half term. To join, please contact Minnie Hulme on 841118 or email [hulmessherston@sky.com](mailto:hulmessherston@sky.com)

## WEA Sherston Arts, Literature and History Courses

The WEA (Workers's Education Association) offers courses on the Arts, Literature and History in the British School Room, Cliff Road. For more information or to book a place contact Warwick or Pat Jones on 840764 or [warwick.jones@btinternet.com](mailto:warwick.jones@btinternet.com).

**Village Hall 300+ Club** For an annual subscription of only £6, give yourself the opportunity of winning a cash prize in every monthly draw whilst supporting the Village Hall. If you would like to join, or need more information, contact the coordinator, Lin Prior on 840846.

**Wiltshire Walks** The walk lasts approximately 45 minutes and often ends with a cup of tea or coffee. Further information contact Sarah Sims on [sarah.sims@wiltshire.gov.uk](mailto:sarah.sims@wiltshire.gov.uk) or 07846100233. For a full list of walking groups in Wiltshire please visit [www.wiltshire.gov.uk/getwiltshirewalking](http://www.wiltshire.gov.uk/getwiltshirewalking).

**Wild Yoga** Mon evenings during term time - 6.45-8pm and 8.15-9.30pm in the village hall. Drop in rate £9 reducing to £7.50 if you take up the course. Contact Theo 07818 401110 or [theo@wildyoga.co.uk](mailto:theo@wildyoga.co.uk)

*If you run a club, society or organisation in Sherston that holds regular events such as the above and wishes to be listed, please supply your details and we will add them to the Regular events list. If you have a particular event then please write a short piece about it and we can include it as an article and put the details in the What's On list for that month.*

# WHAT'S ON

## What's on in 2016 Dates for your diary

### February

6 Busy Hands Quiz

### June

24-25 Battle of Sherston Events

If you're planning a community event in the parish why not let the Cliffhanger have the basic details as soon as possible? Email [info@sherstoncliffhanger.co.uk](mailto:info@sherstoncliffhanger.co.uk) to add the event to this list. Everyone will then know what's occurring in good time and it will help prevent events clashing.

## Sherston

### The Rattlebone Inn

Monday Quiz Nights Every Monday at 7:30pm Free entry and prizes for the winning team

Live Music : Don't Speak, acoustic duo Fri 11 Dec

Live Music : The Killertones Sat 19 Dec

The Rattlebone Christmas Party with The Dodington Brass Band for carol singing Tues 22 Dec

mulled cider and mince pies

Boxing Night - live music with Nobody's Business

New Year's Eve - Fancy Dress Party. Wild West - check boards for details

Check boards for more details of events or call 840871 or follow on Twitter [#GavinHunt@Therattlebone](https://twitter.com/GavinHunt@Therattlebone) or visit [www.therattlebone.co.uk/](http://www.therattlebone.co.uk/)

## Sherston Market

Local crafts and produce which vary each month, cake stalls including Aunt Addie's Farm Project fresh local vegetables and cheeses from Brinkworth Dairy.

Every month a free stall in the lobby is made available to local charity or voluntary group to raise funds. See [www.sherstonmarket.weebly.com](http://www.sherstonmarket.weebly.com) for dates and a contact form. December's is in support of the charity For – Ethiopia [www.for-ethiopia.com](http://www.for-ethiopia.com) Sat 12 Dec 10am-2pm Village hall For further details, call 07887 814843 or 07769 613627 or email [info@awkwardsquad.co.uk](mailto:info@awkwardsquad.co.uk) or visit [www.sherstonmarket.co.uk](http://www.sherstonmarket.co.uk) or <https://www.facebook.com/pages/Sherston-Market/195319400641324>

## Church events

See Parish Life or Church notice boards for details of Christmas services

Church Bazaar Sat 5 Dec 11am in the Village Hall Many stalls with Christmas gifts and bric a brac. Donations to Pat Whitehouse (840640) or Heather Martin (840375). This is one of the main fundraising events to pay for Church running costs so please come along.

For further details of Church services, call Rev Christopher Bryan 837522 or [Christopher.bryan123@btinternet.com](mailto:Christopher.bryan123@btinternet.com) or twitter [@chrisbryanrev](https://twitter.com/chrisbryanrev) // blog <http://revchristopherbryan.wordpress.com/> Phil is at <http://deaconosity.wordpress.com>

## SHOCC Carol Singers - in aid of Parkinson's UK

Tues 15 Dec starting at Easton Sq at 7pm with a route round The Tarters and finishing at The Rattlebone around 8.15pm. Feel free to join us.

## Art Exhibition at Shear Class Salon

for the months of December and January 2016 will be Gill Ashley. Do stop by for a look – maybe even a Christmas present Anyone can call in to see them – you don't have to be attending the salon.  
Shear Class, High St

# perfectly you

cosmetic injections

Treatments that help soften the fine lines and wrinkles on your face:

- Free personal consultation
- Forehead lines, frown lines, crows feet
- Skin rejuvenation, scar and blemish reduction
- Treatment for excessive underarm sweating

Dr Pip Pettit

BM FRCGP Aesthetic Practitioner, Sherston, Wiltshire

Tel: 0788 7582 233

[www.perfectly-you-aesthetics.co.uk](http://www.perfectly-you-aesthetics.co.uk)

## Sherston Senior Club

Christmas Lunch Tues 8 Dec 12 for 12.30pm at The Old Royal Ship Luckington

AGM Tues 12 Jan at 2pm in the British School-Room

New members welcome - subscription 2016 is £15.00.

For further details call Helen Quirk 840516

## Sherston WI Talks

Visitors always welcome - £3.50. If new to the village come and make new friends.

Looking at Life as I see it with Jean Collins 3 Dec at 2.30pm in the BSR - with tea and cake

Lunch at The Royal Old Ship, Luckington instead of the monthly meeting - 7 Jan

AGM 4 Feb 2.30pm in the BSR Mar-Sep in the Village Hall at 7.30pm and Nov/Dec/Feb in the British Schoolroom at 2.30pm. No meeting in Oct or Jan

For further details, call Jill Woodward 840578 or [jillwoodward222@btinternet.com](mailto:jillwoodward222@btinternet.com)

## Santa's Grotto in Sherston

Father Christmas comes to Sherston market - Thanks to Busy Hands - Sat 12 Dec 10-12.30 Have a family private audience with Santa in his cosy living room, choose a present, play with the elves all for £4 Also available will be mulled wine, mince pies and craft - make a Christmas decoration to take home or decorate a ginger bread man.

## Christmas trees for Vikings & Pre School

Non-drop Christmas trees will be on sale from outside The Angel every weekend morning throughout Dec 09.30-12.30 whilst stocks last All profits go to charity and this year will be split between the 1016 Viking fund and Busy Hands Pre School. Prices are 4ft £35, 6ft £45 & 8ft £55. Come early or pre-order - please call Emma 841402 or email [emmanewby@gmail.com](mailto:emmanewby@gmail.com)

Delivery in Sherston by the Scouts Scouts will be available to hand deliver the trees locally within Sherston in exchange for a small donation to their funds for those who would like to keep their cars clean or are unable to carry them home themselves.

## Friends of Sherston School Christmas Fair

Festive cheer with Santa's grotto, children's crafts, tombola, secrets room, face painting, refreshments, and festive stalls run by the pupils. Fri 4 Dec 5-7pm Entry is free, all proceeds to the Friends of Sherston School who are raising funds to repaint the playground Free entry

FSS Fab Family Christmas Show There'll be comedy, a brand-new pantomime, singing, dancing and of course plenty of audience participation! Featuring some well-known, (but sometimes barely recognisable) faces from the school playground Fri 12 6.30-8.30pm Tickets on sale from the Friends of Sherston School from Monday 24th November outside school

Sherston School

For further details call 840237 or visit [www.sherston.wilts.sch.uk/fss.html](http://www.sherston.wilts.sch.uk/fss.html)

## French holiday clubs

With stories, puppets, craft, cooking, games and role-plays, the French language will be brought to life. Your child will have a fabulous time and come away feeling more confident in the spoken language. 5 and 21 Dec in Sherston 10am -3pm £38

For further details and reserve a place at [admin@clubs4kids.com](mailto:admin@clubs4kids.com)

or call 837295 / 07972 591311 or visit [www.clubs4kids.com/](http://www.clubs4kids.com/)

## Sherston Drama Group

Auditions for Spring Play 2016 - a thriller Tues 1 Dec at 7.30pm at 4 Ruckley Barn Cottages, Easton Grey.

Rehearsals will take place on Tues and Thurs evenings starting Tues 5th Jan 2016. Many smaller parts also available. No obligation to take part of course. So give it a try The play will be performed over 6 - 9 Apr. (Half Term / Easter is 25 - 28 Mar)

For further details, call [auditions@poodoo.org](mailto:auditions@poodoo.org) or call 840094.



**DJ. HICKS**  
**ANTIQU**  
**FURNITURE**  
SALES, RESTORATION & UPHOLSTERY  
Unit 1a Warren Business Park, Knockdown  
Nr Tetbury, Gloucestershire GL8 8QY  
Tel: 01454 238004  
Mobile: 07889 655152  
Email: [djhicksantiques@hotmail.co.uk](mailto:djhicksantiques@hotmail.co.uk)  
Website: [www.djhicksantiquefurniture.co.uk](http://www.djhicksantiquefurniture.co.uk)



[www.foot-health-care.co.uk](http://www.foot-health-care.co.uk)  
**FOOT HEALTH CARE**  
Corns - Nail Trimming - Verrucae - Hard Skin  
Athlete's Foot - Ingrown Toenails - Nail  
Infections Cracked Heels (Fissures)  
Sina Ohms MCFHP MAFHP  
Foot Health Practitioner  
Clinics available at:  
The Oxford Practice, Malmesbury  
Tel: 01666 824 560  
The Chippenham Natural Therapy Centre  
Tel: 01249 443 390  
Home Visits  
Tel: 01666 838683 Mob: 07593 324 128

## Worker's Educational Association (WEA) Art, Literature and Music courses

**Shakespeare in the Theatre** Dr Tim Hammond delivers an exciting course which examines the dramatic work of Shakespeare - Fri 6 Nov - Fri 11 Dec 10am-12.15pm Course Fee: £48

**Dutch and Flemish Painting Masters** Paul Chapman presents a comprehensive review of the astonishing contribution of 15th, 16th and 17th century Dutch and Flemish painters including Bosch, Bruegel, Vermeer, Frans Hals, Rubens and Rembrandt Fri 8 Jan - Fri 12 Feb 2016, 10am-12.15pm. Course Fee: £48

**Three Choirs Festival - 1 day course** Tim Porter holds comprehensive exploration of the 300 year history and music of the internationally renowned festival being celebrated at Gloucester in 2016. Sat 19 Mar 2016, 11am - 4.40pm £25 British Schoolroom.

*For further details call Enquiries and bookings contact Warwick or Pat Jones on 840764 or warwickandpatjones@gmail.com or visit [www.wea.org.uk/](http://www.wea.org.uk/)*

## Busy Hands Quiz 2016

**Annual Fundraising Quiz Night** Raffle and auction. Sat 6 Feb Bar opens 7.30pm Quiz starts at 8pm £20 for a team of up to 4 All proceeds to Busy Hands Pre-school Sherston Village Hall

*For further details call Tickets on sale at the Post Office or call Victoria on 841178*

## Knockdown

### The Holford Arms

Live Music every weekend

Check boards for more details of events

*For further details call 01454 238669 or [info@theholfordarms.co.uk](mailto:info@theholfordarms.co.uk)*

## 'Sherston Brick Club'

British Schoolroom

Friday 4th December:

5.30 to 6.30pm - Junior Brick Club:  
reception 8 years

6.30 to 8.00pm - Brick Club:  
8 years upwards

Friday 18th December:

Sherston Brick Club Christmas Party  
5.30 to 8.00pm for all

## Easton Grey

### Festive open day at Tracklements

**Tracklements Open day** There will be factory tours, mulled wine and festive nibbles to enjoy, and of course a chance to do some Christmas shopping in the on-site shop. Sat 5 Dec 9.30 - 1pm

Whitewalls, Easton Grey

*For further details call 827044 or visit [www.tracklements.co.uk](http://www.tracklements.co.uk)*

## Whatley Manor

**Thursday evening cinema** £23 includes a choice of either a glass of wine, a bottled beer or soft drink. A small tub of delicious ice cream (choice of flavour) and of course popcorn. Must be prebooked 8.30pm start Focus starring Will Smith 10 Dec Mr Holmes 14 Jan 2016

**Sunday Cinema** £8.50 includes your cinema ticket for the screening and popcorn. In addition, on the day, choose one, two or three courses from the a la carte lunch menu in 'Le Mazot' brasserie The Sunday Cinema Screenings must be pre-booked and at least one course must be booked Focus starring Will Smith 27 Dec Mr Holmes 24 Jan 2016

*For further details call 834026 or visit [www.whatleymanor.com](http://www.whatleymanor.com)*

## Westonbirt

### The Arboretum

**Specialist Wood Sales** 2nd Saturday and Sunday every month 10am-1pm in aid of FOWA

The new TreeQuests app enables adventurers to create

## HAIR BY JULES

High Quality Mobile Hairdressing service for Sherston and the surrounding villages, providing all your needs, even wash basin and towels.

Wet Cuts £15.00	Senior Citizens on any day:
Cut & Blow dry £33.00	Shampoo & Set £12.50
	Cut Shampoo & Set £24.50

Perms: Half Head £35.00 including S&S or Blow dry
Full Head £45.00 including S&S or Blow dry

Colours, T,Sec, Full Head Roots.. Full Head Foils ...Gents Cuts..

*I would love to hear from you...*

Please call JULES 07581790110  
or email [yewtree04@btinternet.com](mailto:yewtree04@btinternet.com)

**Traditionally finished COTSWOLD STONE**  
of the very finest quality  
direct from our quarry



**Walling Stone •**  
**Building Stone •**  
**Roofing Tiles •**  
**Garden Stone •**

**Tel: 01666 840443**  
**Fax: 01666 840191**

**[www.knockdownstone.co.uk](http://www.knockdownstone.co.uk)**  
Knockdown Stone,  
Halfway Bush Farm, Knockdown,  
Tetbury, Gloucestershire GL8 8QY

their own quest through the arboretum, with interactive challenges along the way...

**The Enchanted Christmas** returns with a new illuminated trail route through the Old Arboretum and more exciting festive activities, foods and stalls onsite. The hard paths are accessible for wheelchairs and electric scooters and these can be booked in advance by calling 881218. Sorry, dogs (except assistance dogs) are not allowed on the trail because it is in the Old Arboretum, the dog free zone. Trail opens 5pm last entry 7.30pm Fri Sat and Sun evenings till 18 Dec - On Fridays, Friends of Westonbirt Arboretum members will receive a 50% discount on the full ticket price. Children (under 19s) accompanying parent/ guardian FOWA members go free Admission £10 adult /£8 concs/ £5 chd / under 5s free

Check website for details of events, wood and photography courses, guided walks and family fun days

Dec - Feb admission prices Adults £6 Concs and those arriving by bike or public transport £6 Children (5-18) £2 under 5s free

For further details, call 880220 or visit [www.forestry.gov.uk/westonbirt](http://www.forestry.gov.uk/westonbirt)

## Malmesbury

### Events at Malmesbury Library

**Wiltshire Christmas** - a talk and readings from the Wiltshire Archives with Margaret Moles (archivist) revealing how this seasonal event in our historic county was celebrated in the past. Wed 2 Dec at 2.30pm Tickets £3 (inc refreshment)

Malmesbury Library, Cross Hayes

For further details call 823611

### Late Night Christmas Shopping in Malmesbury

Festive street market with Santa's Grotto, carol singers, and late night shopping Fri 4 Dec 6 - 9pm

**Late Night Shopping New:** some shops will have later night opening till 7pm on Thurs and Fri till Christmas - check with individual shops for details

Upper High St, Malmesbury

For further details call 01249 783434

## Malmesbury Singers Christmas Concert

**Hail Star!** Sat 12 Dec 7.30pm The concert will feature works by JS Bach, Bob Cillcott, John Rutter and Eric Whitacre Tickets (£12, £10 senior citizens, £5 students) available from Abbey Bookshop or email: [tickets@malmesburysingers.co.uk](mailto:tickets@malmesburysingers.co.uk)

Malmesbury Abbey For further details call Abbey book shop

## HEALS Isolation Christmas Lunch

For the 2nd year running, we are working with Waitrose and other retailers in the town to bring "Christmas cheer" to those that are lonely or vulnerable in our communities. Nominations for places should be sent in the first instance to HEALS of Malmesbury's General Manager, Alison Cross-Jones, who will agree with you how the nominee will be approached. The lunch is open to all ages including families. Our plan is to again serve Christmas lunch in the Malmesbury Community Hub at Malmesbury Town Hall, on Christmas Eve and if possible to provide each attendee with a gift.

Similarly we ask that you please spread the word among those you know who might be willing to help us organise these events. We need cooks, vegetable "preparers", drivers, waiters and waitresses, "setter uppers" and "cleaner uppers!" The more the merrier!

## MP's Surgery

Local MP surgery with James Gray MP 12pm - 1pm  
Sat 19 Dec 12pm - 1pm

Hobbes Parlour, Malmesbury Town Hall

For further details call [www.jamesgray.org](http://www.jamesgray.org) or email [jamesgraymp@parliament.uk](mailto:jamesgraymp@parliament.uk) for online surgeries

## Malmesbury Film Society

Showing world and classic films every 3rd Sun of the month at 7.30pm. Tickets £5, no booking required. St. Mary's Hall, Malmesbury

For further details call [www.malmesburyfilmsociety.org.uk](http://www.malmesburyfilmsociety.org.uk)

**IAN ASHBY**  
(SHERSTON)

**Private hire**  
**6 seat taxi**

**07875 844463**  
**01666 841224**

Guaranteed seasoned  
logs and more...

Friendly and reliable local supplier

01453 808330

or buy online at [www.elcombefirewood.co.uk](http://www.elcombefirewood.co.uk)

Elcombe  
**Firewood**

woodsure  
Find us on  
facebook.



**Sherston**  
**Busy Hands**  
Pre-School

**9.10am-12.10pm everyday in the Village Hall...**  
**Now with Lunch Club until 1pm Monday to Friday**

Age 2 3/4 - 5 years

**New outdoor free flow play area**  
**Come along for a taster session!**

call us on **07841 571943** or **01666 841062**  
email us on [chair@sherstonbusyhands.org.uk](mailto:chair@sherstonbusyhands.org.uk)  
visit us at [www.sherstonbusyhands.org.uk](http://www.sherstonbusyhands.org.uk)

Registered charity no. 296903

## Malmesbury & District University of the Third Age

U3A is a unique organisation which provides educational, creative and leisure opportunities for retired and semi-retired people to come and learn together, drawing upon the knowledge, experience and skills of their own members to organise and provide interest groups in a very wide range of subjects. Now with over 350 members in the Malmesbury group Meet on the 4th Thursday of the month at 10am for refreshments 10.30-11.30 speaker close by 11.45 Charge 50p

**No meeting in Dec**

**Bletchley Park Day Trip** Book the date - Thur 14 Apr 2016 cost £35 incl entrance and coach travel max 30 places so please contact Judy Paginton at secretary@malmesburyu3a.org.uk

Assembly Rooms at the Town Hall

For further details call Membership Secretary Julia Batty on 01249 720327 or visit [www.malmesburyu3a.org.uk](http://www.malmesburyu3a.org.uk)

## Tetbury

### Christmas Events in Tetbury

**The Christmas Lights Switch-On** Katie Rowlett of ITV News West Country Thurs 3 Dec 5.15pm starting with a torchlit procession from St Mary's Church Community carols, evening entertainment and stalls under the Market Hall & late night shopping

Road Closure 4-8pm Church Street from Old Brewery Lane to Long Street will be closed to traffic. A traffic diversion will apply.

Tetbury Market Square

For further details call Tetbury Tourist Information 503552 or visit <http://www.christmasintetbury.org.uk/switchon.shtml>

## Didmorton

### Flicks in the Sticks

Mr Holmes Fri 11 Dec Doors open 6:30pm for 7.30pm start. Cash bar £3 in advance £3.50 on the door.

Didmorton Village Hall For further details call Jenny Body 01454 238358 or [jenny.body@btconnect.com](mailto:jenny.body@btconnect.com)

## Grittleton

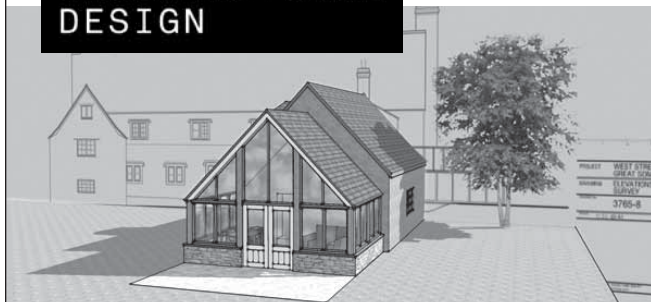
### Moviola -

### the Touring Rural Cinema Scheme

CINDERELLA [U] - Wed 2 Dec straight after the Christmas Bauble event at the Neeld Arms Doors open 7pm for 7.30pm start £6 from Lesley or on the door. Thanks for continuing to support Moviola at Grittleton - we wish you a happy Christmas. Look forward to seeing you in 2016. Details of our first film of the year will be in January's Cliffhanger

Grittleton Village Hall For further details call Lesley 01249 783157 or email [l\\_palmer@btinternet.com](mailto:l_palmer@btinternet.com) or visit <http://www.moviola.org/>

**SKETCHUP  
ARCHITECTURAL  
DESIGN**



## 3D CAD Models and 2D Drawings



- Design and Visualisation
- Planning Applications
- Building Regulation Drawings

For a free initial consultation contact:

[info@sketchuparchitecturaldesign.com](mailto:info@sketchuparchitecturaldesign.com)

**07814 685 519**

[www.sketchuparchitecturaldesign.com](http://www.sketchuparchitecturaldesign.com)

Pinkney Park. Malmesbury. Wiltshire

## JOIN THE SPORT OF KINGS

Flat & NH Racehorse Purchaser based in Sherston

2014 Gr. 1 Winners The Wow Signal & Garswood



[www.richardknightbloodstockagent.com](http://www.richardknightbloodstockagent.com)  
richard@richardknightbloodstockagent.com  
Mobile: 07769 349240



## TALLY HO TRAILERS Horse Trailers

New and Used  
Sales - Service - Repairs  
Van Fautras - Cheval Liberté  
- Ifor Williams

[www.tallyhotrailer.co.uk](http://www.tallyhotrailer.co.uk)  
tel: 01666 841149  
or 01452 814152

## Crudwell

### North Wilts Villages Flower Club

Flower club meetings take place on the 3rd Wed each month, 7 for 7.30pm. If you enjoy flowers come and join us, visitors and new members are welcome.

#### Annual Christmas workshop and bring and share supper

During this relaxed social evening, members can create their own Christmas designs. 16-Dec

#### "To the Manor Born" - demonstration by Lucy Ellis 20 Jan

The second round of our competition will be a decorated candle stick. All are welcome to enter

Crudwell Village Hall SN16 9HB

For further details call Margaret on 01285 770 639

## Lacock

### Special Events at Lacock Abbey & Village

Lacock's Snow Joke Christmas children's trail 11am - 4pm throughout Dec

Christmas tree festival 25 magical trees in the abbey's cloister

For further details call 01249 730459 or visit

[www.nationaltrust.org.uk/lacock](http://www.nationaltrust.org.uk/lacock)

## Bitton

### Avon Valley Steam Trains

Santa Express - meet Santa on a 1 hour train ride through the Avon valley Every weekend in Dec 6 departures from 10.30 am till 4.30pm £10/12

Carols and steam Sat 5 dec 6.45pm £6/£3 incl train fare and mince pie

Avon Vally Railway For further details call 0117 932 5538 or visit [www.avonvalleyrailway.org](http://www.avonvalleyrailway.org)

## Kristian Pettifor

Designer and maker of bespoke freestanding and fitted furniture.



[www.kristianpettifor.com](http://www.kristianpettifor.com)  
[Kristianpettifor@gmail.com](mailto:Kristianpettifor@gmail.com)  
 07922878899



# R&B

## VEHICLE SERVICES

Est. 10 years






# 01454 238700

**REPAIRS, SERVICING**  
**DIAGNOSTICS, BATTERIES**  
**TYRES, EXHAUSTS**  
**FOR CAR, 4 X 4 & LIGHT VANS**

FREE LOAN CARS AVAILABLE  
**YOU CAN NOW BOOK YOUR MOT**  
**ONLINE AT**  
[www.mottetbury.co.uk](http://www.mottetbury.co.uk)



**BAY 4 KNOCKDOWN**  
**1 MILE FROM WESTONBIRT ARBORETUM**

**COST EFFECTIVE MAINTENANCE AT A FRACTION OF DEALER PRICES**  
**CALL RICHARD OR BEN FOR FRIENDLY, RELIABLE SERVICE**

## BALCONY HOUSE CELLARS

The Old School, High Street, Sherston SN16 6LL.

The UK's largest selection of wines from South West France from £4.99.

Over 200 vintage wines from Bordeaux, Rioja and Port from the 1930's to 2000. We specialise in stocking and sourcing wines for presents and special occasions including large formats.

Range of regional foods from France, Italy and the UK.

Open evenings, weekends and bank holidays.

Tuesday to Friday 5pm-8pm  
 Saturday 10am-8pm  
 Sunday 12am-4pm

Free

- Local delivery for 6 bottles and over.
- Menu advice.
- Wine search and sourcing.
- Valuations and purchase, or commission based sale of good quality vintage wines.

We also hold private or corporate wine and food tastings for 4-40 people. Why not have a private tasting dinner party at your house?

For telephone orders and specialist advice please call Neil on 07976 776359.

[www.balconyhousecellars.com](http://www.balconyhousecellars.com)



## HMH CONTRACTING LTD

General Builders

Tel 01666 841412

Email [info@hmhbs.co.uk](mailto:info@hmhbs.co.uk)

- \*Extensions
- \*New Builds
- \*Kitchens
- \*Bathrooms
- \*Listed Buildings and Renovations
- \*Architectural Design and Planning Service

**COMPLETE BUILDING SOLUTIONS FROM START TO FINISH**

In Association with Partridge Architectural Services 07833433872  
 Email [drawings@partridgehouse.co.uk](mailto:drawings@partridgehouse.co.uk)



## Swindon

### Great Western Railway Museum

Christmas stalls @ Steam Sat 5 - Sun 6 Dec 10am-5pm

Over 40 stalls £3 adult £1 child and entry to whole museum at this price.

For further details call 01793 466646 or visit [www.steam-museum.org.uk](http://www.steam-museum.org.uk)

## Wotton-Under-Edge

### The Electric Picture House

A refurbished local cinema run by volunteers from the local community This month: The Lady in the Van; Brooklyn; The Hunger Games: Mockingjay Part 2 2D; Florence and the Uffizi Gallery 3D; Encore Check website for details

For further details call 01453 844601 or visit [www.wottoncinema.com](http://www.wottoncinema.com)

### Wotton Bridge Club

Bridge lessons on Tuesday and Thursday evenings in the Wotton Civic Centre, from Oct onwards. £6 per lesson. Complete beginners welcome.

There is also a friendly club for relatively inexperienced players on Monday afternoons in Kingscote.

For further details call Ian Cooke on 890261 or email [tresham.bridge@gmail.com](mailto:tresham.bridge@gmail.com)

## Ozleworth, Wotton-under-Edge

### NT Newark Park House and Estate

Christmas at Newark Park The House will be open with wonderful decorations and glorious views, while outside you

can enjoy a brisk walk on the Estate. Have a warm drink and get some lovely gifts ready for this festive season Sat and Sun 5-6 and 12-13 Dec 11am - 4pm. Adult £6.40 / Chd £3.30 / Family £16.10 Free parking (free to NT members).

**Christmas wreath making workshop** 7 Dec 10am-1pm £35

**Christmas Fair** Sat 12- Sun 13 Dec , stalls, Children's Christmas trail

Apart from this, the house and gardens are shut until until Snowdrop Week in February but the estate is still open for miles of woodland walks (free entry). Dogs on a lead welcome

For further details, call phone 01793 817666. or visit [www.nationaltrust.org.uk/newark-park/](http://www.nationaltrust.org.uk/newark-park/)

## Nailsworth

### Forest Green Rovers F.C.

Professional football only 20 minutes drive from Sherston.

Home matches: Sat 19 Dec 3pm v. Boreham Wood; Mon 28 Dec 3pm v. Kidderminster Harriers Adults £17/£15, Concessions £13/£11, under 16s £9/£7 junior £6/£4 Adults £15/£13, Concessions £10/£8, under 16s £2

The New Lawn Forest Green Nailsworth

For further details call

01453 834860 or visit [www.forestgreenroversfc.com](http://www.forestgreenroversfc.com)

## Ride On Cycles

The Mobile Cycle Workshop That Comes to You

Full range of servicing & repairs carried out by a City & Guilds qualified mechanic.

Contact Andy on:  
01454 880872 / 07443333219  
[andy@ride-on-cycles.co.uk](mailto:andy@ride-on-cycles.co.uk)  
[www.ride-on-cycles.co.uk](http://www.ride-on-cycles.co.uk)

### McTimoney Chiropractic Tolsey Surgery, Sherston

A gentle & effective treatment for  
back, neck & shoulder pain,  
migraines, sports injuries & more

Emma Newby BSc MMCA  
01666 841 402  
[www.mctimoneychiro.co.uk](http://www.mctimoneychiro.co.uk)

Lantern House - Sherston  
5\* holiday cottage  
[www.cotswolds.plus.com](http://www.cotswolds.plus.com)



Family & friends visiting?  
Sleeps 5 + Nursery for baby  
T. 01666 505807  
M. 07928 809624  
E. [lanternhouse@cotswolds.plus.com](mailto:lanternhouse@cotswolds.plus.com)



garden design, construction  
and aftercare  
bespoke garden buildings  
and logstores

[sagegardendesign.co.uk](http://sagegardendesign.co.uk) email: [chris.sagegardendesign@gmail.com](mailto:chris.sagegardendesign@gmail.com)

Christopher Frost  
Willows, Brook End  
Luckington, SN14 6PJ  
01666 841175  
07973 736912



[www.dawnrileytennis.co.uk](http://www.dawnrileytennis.co.uk)

After school tennis coaching  
at Sherston Tennis Club



Tennis coaching for all!

Call Dawn for more details:

**0772 959 6562**

## Bath

### Bath Christmas Market

170 wooden stalls between Bath Abbey and York Street

Thurs 26 Nov - Sun 13 Dec 10am - 7pm Mon - Wed/

8.30pm Thurs- Sat/ 10-6pm Sundays

with 25% new stalls in 2015 and 82% are from the local area with 72% offering hand made products.

For further details, visit [www.bathchristmasmarket.co.uk](http://www.bathchristmasmarket.co.uk)

### Bath Film Festival

25th Bath Film Festival 3-13 Dec over 40 films £5-25

various cinema locations throughout Bath For further details call 01225 463362 or [boxoffice@bathfilmfestival.org.uk](mailto:boxoffice@bathfilmfestival.org.uk) or visit

[www.bathfilmfestival.org](http://www.bathfilmfestival.org)

### Theatre Royal

Handbagged 30 Nov - 5 Dec £15-£33.50

Panto: Jack and the Beanstalk Thurs 10 Dec - Sun 10 Jan

Starring Nigel Havers

Traveling Light present: Snow Mouse A Christmas show for the little ones 10 Dec - 3 Jan in The Egg

Regent's Park Theatre London present Lord of the Flies Tues 12- Sat 16 Jan

Book ahead for: ; Panto: Jack and the Beanstalk

For further details call 01225 448844 or visit [www.theatreroyal.org.uk](http://www.theatreroyal.org.uk)



### ABBEY DAMP PROOFING

Malmesbury, Wiltshire

DPC Injection • Woodworm Treatment  
Tanking • Cellar & Basement Conversions  
Dry & Wet Rot • Condensation Control  
Plastering Services • Replacement Wall Ties  
Guarantees provided • Fully insured

**Tel: 01666 823520 Mobile: 07951 437163**

[chrisgrayson92@yahoo.co.uk](mailto:chrisgrayson92@yahoo.co.uk)

## Bath, Stroud, Bristol

### Covent Garden Royal Opera House and Ballet @ the cinema

Live and pre recorded screenings of opera and ballet from the ROH Covent Garden

Opera: Cavalleria rusticana / Pagliacci 10 dec 7.15pm

Ballet: The Nutcracker 16 Dec 7.15pm

Rhapsody / The Two Pigeons 26-Jan

Opera: La Traviata 04-Feb

Opera: Boris Godunov 21-Mar

Stroud Apollo, Odeon Bath and many other Cinemas

For further details call 0871 220 6000 or visit

[www.roh.org.uk/cinema](http://www.roh.org.uk/cinema)

## Malmesbury, Chippenham, Bath, Stroud, Bristol, Wotton

### National Theatre Live

Live and pre recorded screenings

Jane Eyre Live: Tues 8 Dec

Live: Les Liaisons Dangereuses Live: Thur 28 Jan

As You Like It Live Thurs 25 Feb

For further details, call or visit [www.ntlive.com](http://www.ntlive.com)

### STANTON COMPUTER SERVICES

We come to you!

PC repairs

Upgrades

Installation of new hardware

Wired and wireless networking

Internet and email set up and coaching

Virus cleansing

Please call Nick Greene on 01666 837850

Mobile 07887 721396

Email: [nick@computerfixer.org.uk](mailto:nick@computerfixer.org.uk)



Hand-made, Bespoke  
Kitchens & Interiors

### WOODCHESTER

Cabinet Makers

Unit N6A Inchbrook Trading Estate

Woodchester Nr Stroud

Gloucestershire GL5 5EY Tel 01453 835580

[www.woodchestercabinetmakers.co.uk](http://www.woodchestercabinetmakers.co.uk)

## EMERGENCY RESPONSE

If you are in immediate danger call 999

The public version of Sherston's Emergency Response Plan can be found on the Sherston website:

[www.sherston.org/downloads/sherston-parish-council-emergency-plan/Sherston-Emergency-Plan-REDACTED-20-11-2015.pdf](http://www.sherston.org/downloads/sherston-parish-council-emergency-plan/Sherston-Emergency-Plan-REDACTED-20-11-2015.pdf)

### Sherston Emergency Response Coordinator

Jill Cainey

841380

3 Noble Street

[emergency@sherston.org.uk](mailto:emergency@sherston.org.uk) (only during an incident)

### Wiltshire Council

Highways, Social Care, Emergency Transport

24hr telephone contact: 0300 456 0100

[EPRR@wiltshire.gov.uk](mailto:EPRR@wiltshire.gov.uk) (only during an incident)

Floods: 0300 456 0105 or [drainage@wiltshire.gov.uk](mailto:drainage@wiltshire.gov.uk)

### Useful Information

Wiltshire Council Online Gritting routes

[www.wiltshire.gov.uk/parkingtransportandstreets/roadshighwaysstreetcare/gritting.htm](http://www.wiltshire.gov.uk/parkingtransportandstreets/roadshighwaysstreetcare/gritting.htm)

### Utilities

ELECTRICITY – SSEPD Power track

[www.ssepd.co.uk/Powertrack](http://www.ssepd.co.uk/Powertrack)

0800 072 7282 or 0345 072 1905 from a mobile phone

### WATER – Bristol Water

[www.bristolwater.co.uk/contact/](http://www.bristolwater.co.uk/contact/)

Emergency Helpline: 0345 702 3797 (24 Hour)

### WATER – Wessex water

[www.wessexwater.co.uk/Contact-us/](http://www.wessexwater.co.uk/Contact-us/)

Emergency Helpline: 0345 600 4 600 (24 hours)

### BBC Wiltshire can be heard via:

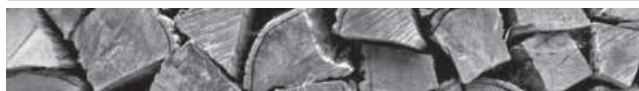
West Wilts area

(Chippenham, Devizes and Trowbridge): 104.3FM

## Useful Numbers

BT fault line	0800 800151
CLARENCE (Highway complaints)	0800 232323
Cllr John Thomson	01666 840785
Malmesbury Activity Zone	01666 822533
Malmesbury Library	01666 823611
Malmesbury Police 101	(emergency 999)
Malmesbury Primary Care Centre	01666 825825
Malmesbury Secondary School	01666 829700
Malmesbury Youth Centre	0799 0908550
MP James Gray	01249 652851
NHS Direct	0845 4647
Sherston Parish Council	01666 840197
Sherston Post Office	01666 840456
Sherston School	01666 840237
Sherston Village Hall (bookings)	01666 841377
Tolsey Surgery	01666 840270
Wiltshire Council	0300 4560100

## FIREWOOD



SEASONED ASH	07972943800
FIREWOOD	01454238787
AVAILABLE IN	EMAIL
VENTED 1M3 BAGS	<a href="mailto:tim@wattsandwatts.co.uk">tim@wattsandwatts.co.uk</a>
WITH FREE LOCAL	<a href="http://d.co.uk">d.co.uk</a>
DELIVERY.	
£55 PER BAG.	

## M.Vincent Windows & Glazing

**For all your glazing needs**  
Wiltshire & Gloucestershire areas  
Fast, friendly and efficient service  
Available at your convenience 7 days a week  
**CALL FOR YOUR FREE QUOTATION**  
**07890 138453 / 01666 460106**  
[enquiries@mvincentwindows.co.uk](mailto:enquiries@mvincentwindows.co.uk)  
[www.mvincentwindows.co.uk](http://www.mvincentwindows.co.uk)

## SHERSTON DRIVING SCHOOL

Michael Holborow A.D.I.

Tel: 01666 840327

Mobile: 07790890978

[mike@sherstondriving.co.uk](mailto:mike@sherstondriving.co.uk)

## The Angel Boutique Bed & Breakfast and Tearooms Sherston High Street

Tearooms open 8-5 daily  
01666 840039

[www.sherstonangel.co.uk](http://www.sherstonangel.co.uk)  
[tara@sherstonangel.co.uk](mailto:tara@sherstonangel.co.uk)