



## Hall plans get the green light

In January planning permission for major improvements to the village hall were granted by Wiltshire Council.

Since the successful redevelopment of the Old School, which included the hall securing additional land namely the field to the rear and part of the school yard, the hall committee has been intent on improving this vital community facility. Already the main hall has been sand blasted to expose the original stonework with the floor being renovated and an entire new fire alarm fitted throughout the building. This has already made the hall much more attractive to hire for a large range of uses and events.

Attention is now focused on the front of the building where in particular the current 1960s main foyer extension is in great need of replacement. It has simply passed its 'sell by date'. The plans therefore include an entirely new main foyer together with toilets. In addition the present kitchen is to be completely refurbished and almost doubled in size. Improved and enlarged storage facilities will also be provided throughout the hall.

The plans themselves are reproduced on pages 14 and 15 within. Larger scale plans are also on display in the porch of the church and the hall committee is most grateful to the church for providing this space. The plans can also be viewed at [www.sherston.net](http://www.sherston.net). Any questions regarding the plans should please be directed to Chris Pickthall via email - [chrispickthall@aol.com](mailto:chrispickthall@aol.com)

The next stage of the project is fundraising to meet the costs of the redevelopment. The committee will be working hard to secure all possible sources of finance but will need the support of the entire community in achieving the aim of a hall of the highest possible standard and which is available to all to enjoy. Look out for details of the fundraising over the forthcoming months and please contribute in any way you can.

*Martin Rea*

### Notice of major roadworks – Luckington and Alderton

Major resurfacing work will take place on the B4040 through Luckington and the road will be closed from the 30mph sign on the Sherston side to the 30mph sign on the Acton Turville side. This work will take place in the week 16-25 February (half-term) and a diversion will be in place for cars and trucks.

Resurfacing work will also take place in The Street in Alderton during the week of 9-12 February.



*Photo: Nick Holland*

The hall will remain available for bookings so if you would like to book the hall for an activity or an event, party, reception or meeting, please contact Tony Weedon on [dogleg3@gmail.com](mailto:dogleg3@gmail.com) or 841377. Two rooms available, large and small also a large adjacent field available, rates on application.

## The Grand Old Dame of Sherston

*The Grand Old dame of Sherston  
is a treasure for us all  
she's a beautiful old building  
we call the village hall*

*She has welcomed us for ages  
she might have known your Gramp  
his parents might have partied there  
when he was but a scamp*

*She's seen our skills at dancing  
oh how she must have laughed  
some of them were elegant  
and others just plain daft*

*How grand she looked just recently  
when we polished up her floors  
and once again for our use  
she opened up her doors*

*But now here age is showing  
and plans are all in place  
to update her facilities  
and put a smile back upon her face*

*So please support our efforts  
as we raise funds for the hall  
so for future generations  
she can welcome one and all*

## Clem's Club

Clem's Club meets on the second and fourth Tuesdays, February to June/September to December. All friendly fellas welcome for simple char and chat, 2.30-4.00pm in the British School Room, Cliff Road, Sherston (alternating with the Senior Club).

## Walk with Sue

Sue McKechnie's next walk will be on Sunday 8 March. Please assemble at the village hall for 10.00am with a return to the Rattlebone Inn just around 12.00noon. As ever, children and well-behaved dogs, the latter on leads, are very welcome. The walk is entirely free and there is no need to book a place – just turn up on the day.

## Well Remembered

The first Sherston open-air Remembrance Sunday ceremony was a huge success and attracted over 600 people from the village. This was reflected in the generosity of the congregation which raised £1,005 for the Earl Haig Fund.

**Copy deadline: 10<sup>th</sup> of the previous month.**  
Send to [editorial@sherstoncliffhanger.co.uk](mailto:editorial@sherstoncliffhanger.co.uk)  
or hard copy to Sherston Post Office Stores.

**What's On: contact Caroline Moore on 841405 or [info@sherstoncliffhanger.co.uk](mailto:info@sherstoncliffhanger.co.uk)**

The size and content of the Cliffhanger depends entirely on the amount of copy we receive from individuals and groups. So, if you feel you have something of interest, please don't hesitate to tell us. Around 400 words would be a maximum but the shorter the better and less editing would be needed.

**Top tip:** if you're telling us of an event coming up, write a short piece about it rather than just supply basic details or a poster. You will then get a short article published to help boost interest as well as a mention in our What's On section. Don't forget to tell us how your event went, with a photo if possible.

**To advertise, contact:**  
[advertising@sherstoncliffhanger.co.uk](mailto:advertising@sherstoncliffhanger.co.uk)  
James Kutchera 07985 050791

Advertising rates:  
for 12 months:  
1/4 page £220; 1/8 page £110; and 1/16 page £55  
for one month:  
1/4 page £88; 1/8 page £44; and 1/16 page £22  
Inserted leaflet drop £85 max size A5

Whilst every effort has been made to ensure the accuracy of advertisements contained in this publication, Cliffhanger cannot accept any liability for errors and omissions. Inclusion of an advert should not be taken as an endorsement by Sherston Parish Council.

Please remember the Cliffhanger is delivered free to every home and business in the parish – more than 1000 copies. This and all previous editions are also available online at [www.sherston.org.uk](http://www.sherston.org.uk)

PRINTED BY THE COMPLETE PRODUCT COMPANY, PINKNEY

## Not one but two

Sherston Drama Group has not one, but two productions for you this spring. The first is our Spring Play – Seeds of Doubt by Peter Gordon, from 8 to 11 April. Make a date in your diary now!



A month later, on 8 and 9 May, we are combining with the SHOCC Choir to give you the Sherston Great War Experience. We intend to present an idea of what it was like for local people 100 years ago, both in the Services and back at home. You will be able to listen to the Choir sing songs of the time, and join in with some of them. You can watch dances from concerts used to raise funds for the troops. Maybe eat some WWI food! And listen to stories and letters from servicemen and women and news and gossip from the Home Front. We have some good stories and other material from people associated with Sherston, both then and now – the gentleman above is a drawing in a letter from a serving soldier who was the great uncle of a local resident. But we could do with some more material. If you would like to offer any stories, anecdotes, reminiscences, or take part yourself, please get in touch with the Richard, the Drama Group Chairman, at [richard.skeffington@virgin.net](mailto:richard.skeffington@virgin.net) or ring 840092 before 14 February. All material will be treated with respect. Otherwise see you at the event!

## SHERSTON DOG GROOMING

SHERSTON, MALMESBURY, WILTS SN16 0NJ

- Fully Qualified to City and Guilds level 3 with Distinctions
  - Full hydraulic dog bath and table
  - Full groom/clip prices from £25
- Full groom/wash prices from £10 • Clip nails £5
- Situated on site with Pyke Boarding Kennels
- Please call for appointment

**Rachel Stanley**

**01666 840386**

**M 07557 654880**

[www.sherstondoggrooming.co.uk](http://www.sherstondoggrooming.co.uk)

Facebook: Sherston Dog Grooming





## Sherston Senior Club

The meeting in the British School Room on 25 November was enjoyed by all members present. We were entertained by the Sherston school choir who sang a medley of songs and finished up by singing Christmas carols, which really were a joy to listen to.

Our next meeting on 9 December was our annual Christmas dinner, which was held at the Old Royal Ship in Luckington. This was very well attended and very much enjoyed by all. On behalf of all club members, I would like to say thank you very much to the staff of the Old Royal Ship who made it such a success.

*From your chairman Malcolm Hillier*

The first meeting of the year was on 6 January, when we had our AGM.

We said thank you to Malcolm Hillier, Chairman for the last two years who is retiring from the Committee for personal reasons. We were doubly grateful to Malcolm as he had stated he wished to retire last year, but stood in until a new chairman was found, hence his one year stretched to two.

In 2014 John Venning replaced Joan Butler as President and will continue in that role. Sue Hewitt will continue as Treasurer and Helen Quirk as Chair/Secretary. All other Committee members were re-elected en bloc.

We are a friendly informal club and meet once a fortnight on Tuesday afternoons – at 2.30pm in summer and at 2.00pm in winter – in the British School Room. We normally have a speaker, then social time over a cup of tea or coffee. We also have various excursions by coach around six times a year.

Why not give us a try? There is no age barrier, so long as you are over 16! Come as a visitor for £2 or, if you join, membership is £15 per year. A bargain, as each meeting works out at 60p over the year – and includes tea and biscuits.

On 3 February at 2.00pm Alan Nix will tell us about the motor trade from 1950 to 1981 and on 17 February Alison Atkins' talk is entitled 'From Gemology to Jewellery'. Hope to see you soon.

*Helen Quirk*

## Sherston Arts Festival

Ten days of arts events for all ages will take place again this October. If you would like to join the planning committee or can offer help in any way, please get in touch with Heather Martin 840375 or Pat Jones 840764.

## Sherston Explorers head to Iceland

A group from Sherston Whitewall Explorers are joining with over 50 other Explorer Scouts from the North Wiltshire District to spend a week in Iceland during the summer.

As is often the case, these things don't come cheap so we will be at Sherston Market on 7 February as the Charity Stall. We will also be selling tables for a Table Top Sale on 22 March at The Scout Hut, as well as a music quiz and sponsorship for a leg wax by one of our brave explorers ... We look forward to seeing you.

## Thank you Sherston bookworms!

Sherston 1016's book sales have become a regular social event, with regulars coming along not just to browse through the thousands of books on display, but also to have a chat with friends.

Regular book lovers come not just from Sherston, but from the wider local area, and even from Marlborough!

The books are displayed in sections: fiction, children's, gardening, cookery, travel, biographies. There's also a thriving section for DVDs and CDs.

The most recent book sale, on January 24, was busy all morning, and did a roaring trade! The sale itself raised £260, with a further £88 from the raffle hamper kindly organised by Jill Caine, and £42 from the collection box in Grays Garage.

The next sale is planned for late March or early April: watch this space for more details.

All the members of Sherston 1016 thank all those who supported the event, and for all donations of money and books. The takings go towards the senior citizens' Christmas vouchers for this year. It's never too soon to start collecting!



# R&B

## VEHICLE SERVICES

Est. 10 years




# 01454 238700

**REPAIRS, SERVICING**  
**DIAGNOSTICS, BATTERIES**  
**TYRES, EXHAUSTS**  
**FOR CAR, 4 X 4 & LIGHT VANS**  
 FREE LOAN CARS AVAILABLE  
**YOU CAN NOW BOOK YOUR MOT**  
**ONLINE AT**  
[www.mottetbury.co.uk](http://www.mottetbury.co.uk)

COST EFFECTIVE MAINTENANCE AT A FRACTION OF DEALER PRICES  
 CALL RICHARD OR BEN FOR FRIENDLY, RELIABLE SERVICE



BAY 4 KNOCKDOWN  
1 MILE FROM WESTONBIRT ARBORETUM

# Sherston Community Choir (shocc) news:

Did you hear us carol singing round the village? We raised £78 for Crisis at Christmas, so thank you to those who gave. Hopefully you may also be tempted to come and join us. We meet during term time on Wednesdays at 7.30pm in the British School Room. New members will be made very welcome!

This term we are singing songs from the World War One era, with the goal of giving a joint concert along with the Drama Group. So, if you fancy singing such classics as 'They were only playing leapfrog', 'Pack up your troubles' and 'For me and my gal' amongst others, please do come along to see what it is like.

Our Musical Director, Nicki Heenan has recently left us – after four years of tireless enthusiasm – and will be much missed. One of our members is very kindly stepping into the role for the term but we are seeking a new director..... So if you have ever had the urge to direct a small community choir or know anyone who may be interested, please do let us know so we can chat about it.

Lucy Lawrance 840778 (evenings)

## Andrew James QUALITY TRAVEL

Andrew James Quality Travel prides itself on always providing a high level of service, attention to detail for any event or trip and providing perfectly presented, clean and valeted vehicles.

Its team of staff will ensure the success of any occasion, advising and assisting with the arrangements.

Whether you are planning a day out and need a mini-coach or you would like a large, luxurious, executive coach you will always find Andrew James vehicles beautifully prepared and exceptionally clean so that you can settle back and travel in comfort.



Telephone: 01666 825655  
Email: [ajcoaches@andrew-james.co.uk](mailto:ajcoaches@andrew-james.co.uk) Website: [andrew-james.co.uk](http://andrew-james.co.uk)

# Pancakes galore!

Sherston 1016 is organising its annual Pancake EATING Competition on the evening of Shrove Tuesday, February 17, from 7.30pm at the Rattlebone in Sherston.

The competition will take place in heats, with each competitor paying a £2 entry fee for the whole evening. Each entrant will have 4 delicious freshly-cooked pancakes to eat in the first heat. Entrants will have time to add lemon and sugar to their taste, then the clock will start, and the first heat will be under way.

The winner of each heat will be the first to finish eating all the pancakes on their plate. This is a really popular family event, with special heats for younger competitors, with fewer pancakes involved.

These winners will then go on to the next heat, again with four pancakes each, and so on until the championship round. The winner will have their name engraved on a 1016 commemorative engraved frying pan! Entries will be welcome in advance or on the night.

Where possible, all ingredients are sourced locally, with eggs coming from Sherston Free-Range Eggs, flour from Shipton Mill at Long Newnton, and lemons from Tucks greengrocers and butchers, although of course, the lemons are not grown in Sherston, or even in Luckington! All three companies very kindly donate their products for the competition.

Sherston 1016 strongly advises all entrants not to eat a meal before coming to the Competition! As it's half term that week, why not bring the family along for an evening of fun?

## Computer Problems?

Home or Business Support

We Come To You !

Fast Service, PC & Laptop Repairs, Virus Removal, Data Recovery  
Wireless Networks, Broadband & Email Setup, Security and Parental Control,  
Hardware and Software Sales. Microsoft Qualified. Local & Friendly.

**Silverchart Systems Ltd**

[www.silverchart.co.uk](http://www.silverchart.co.uk)

**CALL US NOW !**

**01666 840531**

**[office@silverchart.co.uk](mailto:office@silverchart.co.uk)**

**Delivering a First Class Service**



**Tel 01666 840456 / 841127**



## Report from Sherston W.I.



Sherston WI enjoys getting together for meals and we spent a happy time at The Old Royal Ship in Luckington for our January 'meeting'. On 5 February the WI will hold its AGM followed by a talk on Wood Turning.

Meetings from March until October will take place on the first Thursday of each month in the village hall at 7.30pm and visitors are always welcome £3. The year's programme will be available in March.

On 16 April we shall be welcoming Marc Allum of Antiques Roadshow to an Open Meeting. Tickets are on sale from WI members and at the post office - £7 to include light refreshments.

For further information contact Jill Woodward on 840578. *by Ann Wilcox*

## Meeting of the parish council

The parish council will next meet on Thursday 12 February in the village hall at 7.30pm. All are welcome to attend and there are opportunities to raise questions and make comments. If you cannot attend the meeting but have something to raise, please contact the clerk, Sarah Wood, on 840197 or email [clerk@sherston.org.uk](mailto:clerk@sherston.org.uk). You can also contact the council via the response form on [www.sherston.org.uk](http://www.sherston.org.uk) where minutes of meetings can also be read.

## Coffee Shop succeeds again



I am very pleased to say that we have again been able to give £1,000 to Sherston church, being the profit made in a year.

The Coffee Shop really is a 'Win-Win' situation. If you are lonely there is always someone to talk to. If you like Fair Trade coffee and tea we have it. If you like cakes and biscuits we have them. If you like baking we need things made. (and be paid). If you have time to help you can join us.

And the profit we make helps the church.

*Pat Smith 840585*



Nestled in pastureland on the outskirts of Sherston.

Three lovely double, en-suite rooms.

Peaceful and private, separate from main house.

Alastair Sanday's



Luckington Road, Sherston.  
01666 841445

[www.carriersfarm.co.uk](http://www.carriersfarm.co.uk)  
[info@carriersfarm.co.uk](mailto:info@carriersfarm.co.uk)



Allington Bar Farm,  
Chippenham, SN14 6LJ  
Tel: 01249 658112

Open 7 days 9am – 6pm  
Mon – Sat  
& 10am – 5pm on Sundays.

## Quality Local Produce

**Home produced Pork, Lamb, Beef & Goat**

Home Made Sausages & Burgers

Local Free Range Poultry

**All available daily from our Butchery**

**Locally made Preserves, Chutneys & Pickles**

Somerset Jersey Organic Milk & Cream

**Local Cheeses & Home Cooked Meats**

Extensive range of local Ice Cream

**Locally Grown Fresh Fruit & Vegetables**

Homemade Cakes & Pies

**and many more local ingredients .....**

Do you want to know  
**YOUR  
FAMILY HISTORY**

Skeletons in the cupboard,  
convicts, statesmen, rich  
man, poor man,  
beggar man, thief?  
We all have them and they  
are hiding there waiting to  
be found.

Let me find them for you.

**Beryl Clampton**

Call anytime: 01666 841201  
or 07850 623517  
e-mail: [beryl@clampton.com](mailto:beryl@clampton.com)

## Firewood

*Dry seasoned,  
hardwood logs*

*Barn stored*

*any size available*

*Also kindling sold in nets*

*Delivered to your door*

*For more details call Steve on*

**01454 232941 or**

**07974194012**

## The Cantores Chamber Choir performing with string ensemble in Malmesbury Abbey

Malmesbury Abbey Music Society (MAMS) is very pleased to welcome back the Cantores Chamber Choir to Malmesbury Abbey on Saturday 21 February at 7.30pm. The choir will perform with a string ensemble of five players and they will delight us with a mixed concert of music, part choral and part instrumental, on a theme of The Power of the Spirit.

The concert programme will include Bach's Der Geist Hilft, Handel's Concerto Grosso Op. 6 No. 7 in B flat (1,2,3 and 5), Morten Lauridsen's Sure On This Shining Night, Cavalli's Magnificat a8, Byrd's Laetenrur Coeli, Tallis' Loquebantur Varies Lingoies, Ola Gjeilo's Dark Night of the Soul, Boyce's Symphony No.1 in B flat and Monteverdi's Dixit Dominus.

Cantores are one of the Cotswolds most accomplished amateur choirs, enthusiastically aspiring to the standards and the repertoire of The Sixteen!

Malmesbury Abbey Music Society hopes that you will join them in getting our 2015 season off to a very fine start! Tickets for the concert are priced at £15 (£12 Members), or £5 for students, and can be obtained from the Malmesbury Abbey Bookshop or the MAMS Ticket Secretary David Barton on 824 924. Tickets will also be available on the door. Membership and Season ticket for all six concerts in the 2015 season are available @ £60.

## Help for unpaid carers – Carer Support Wiltshire

If you are an ordinary person doing the extraordinary task of caring for family, friends or neighbours, you may welcome the support of a service specifically targeted at unpaid carers in Wiltshire.

Carer Support Wiltshire is a charity supported by Wiltshire Council and NHS Wiltshire that can provide the following free support to carers:

- One-to-one support by telephone or face-to-face
- Support groups
- Training
- Carers' cafes
- Outings and therapeutic breaks

Carer Support Wiltshire already support a number of carers in Sherston, but they estimate that there may be over 100 additional people in Sherston acting as unpaid and hidden carers, who could benefit from this free support service.

Please contact Freephone 0800 181 4118 (from landlines) or 01380 871 690 (mobiles) or you can email Carer Support Wiltshire via [admin@carersinwiltshire.co.uk](mailto:admin@carersinwiltshire.co.uk) to access support. For more information please visit [www.carersinwiltshire.co.uk](http://www.carersinwiltshire.co.uk).

### MARY DERRICK SWIMMING LESSONS FOR CHILDREN

#### AT WESTONBIRT SPORTS CENTRE

NOW OFFERING LESSONS MON, TUES, WED & THURSDAYS AFTER SCHOOL

**We have classes for all abilities:-**

Pre-school classes (3-5 years) have the teacher in the water, parents do not have to get in unless necessary!

Beginners classes have the teacher in the water. Two levels of improver classes & also lane swimming for advanced improvers.

All teachers are fully qualified & CRB checked. We follow the ASA award scheme & have termly "badge nights" for distance awards. We also run personal survival classes, bronze, silver & gold challenge awards & also rookie lifeguard courses. Holiday courses also available.

All lessons run half termly & are ongoing so no need to keep booking in every term!

TEL. 01666 841133 or 077 144 252 01

WE HAVE BEEN ESTABLISHED IN THE MALMESBURY AREA FOR 20 YEARS  
ASA SWIM SCHOOL MEMBER

[www.maryderrickswimming.com](http://www.maryderrickswimming.com)

### Lumley Garden & Pet Supplies

Stainsbridge Mill, Gloucester Road, Malmesbury, Wiltshire, SN16 0AJ

Tel: 01666 822325 E-mail: [etlumley@googlemail.com](mailto:etlumley@googlemail.com)

[www.lumleypetsupplies.com](http://www.lumleypetsupplies.com)



- ✦ Top Leading Brands of Food & Treats ✦
- ✦ Our Own Label Premium Dog Food ✦
- ✦ Bowls, Toys & Accessories ✦
- ✦ Beds & Cushions ✦
- ✦ Wild Bird Food & Products inc. Live Food ✦

" for you and your pet's every need. "

Delivery Service Available



# Tiggers

## Nurseries Ltd

Located in Westonbirt, Stroud and Cirencester



**Most loved BUSINESS IN THE UK**  
AS VOTED FOR BY LOCAL PEOPLE 2015





Westonbirt	Stroud	Cirencester
<b>01666 880 355</b>	<b>01453 750 957</b>	<b>01285 654 000</b>
Nursery Manager: Levi Ogden	Nursery Manager: Emma Davis	Nursery Manager: Angela Bartlett



**Best Nursery in the UK, 4 years running!**

Tiggers Nursery Group consists of three private nurseries in the Westonbirt, Stroud and Cirencester areas of Gloucestershire. All three nurseries enjoy idyllic settings, two within school grounds and are brightly decorated and well equipped to promote each child's development.

 Tiggers Nurseries Ltd
 @tiggersnursery
[www.tiggersnurseries.com](http://www.tiggersnurseries.com)



# Update from the Two Hairy Men

Here are Paul and Jim on 31 December at peak beardiness and just about to see in the New Year together. Their Decembeard challenge in aid of the charity Beating Bowel Cancer has been a great success and between them they have already raised over £1,000. Donation remains open through [justgiving.com/jimsbeard](http://justgiving.com/jimsbeard) or [justgiving.com/paulsbeard31](http://justgiving.com/paulsbeard31) until the end of February – or you can give cash to them in person when you see them in the pub or around the village. Thank you very much to everyone who has already given so generously towards their great total

In 2014 you may have heard of the deaths from bowel cancer of Lynda Bellingham (the Oxo Mum),



**PAWS FOR THOUGHT**

**PROFESSIONAL DOG WALKING AND MINDING SERVICE**

- Bespoke service for you & your dog
- Experience in handling both large & small dogs
- Fully insured in all aspects of dog care
- Knowledgeable in canine first aid, training and obedience
- Group or individual walks available
- Established & recommended for 6 years

**Animal Minding Service** also available for cats & domestic pets. Animals are happier & more secure in their own environment. Daily visits provided to include feeding, grooming, tlc & medication if required

**Please call Sophie Francis on 01666 840538 or 07531 057016**

References available on request

**Martin Ward & Andy Walden**

**Estate & Garden Maintenance Incl:**

- Clearance work
- Hedge & Grass Cutting
- Any types of Fencing
- Any Job Considered
- Fully Insured
- Competitive Rates
- Mobile 07810136778

Stephen Sutton MBE (amazing teenage fundraiser), Kate Gross (aged 36 - high-flying civil servant turned charity worker who wrote about her final months to help others) and Phillip Bradbourn (MEP for the West Midlands, aged 63). They are just some of the well-known victims of Britain's second biggest cancer killer in one year; many other people we haven't heard about will have died or been diagnosed in 2014. Please think about the symptoms which should send you to your doctor - bleeding from the bottom or a change in your bowel habits. Don't be put off from discussing a subject you might rather keep away from and do take the screening test when it comes to you in the post. Look at the Beating Bowel Cancer website ([www.beatingbowelcancer.org](http://www.beatingbowelcancer.org)) to find out more

Thanks again for your support and please think about donating, if you have not already done so, to help people who already have bowel cancer and to spread the word so that others will get early and more effective treatment.

**L.P. Electrical**

**Reliable & Friendly service**

**Free Estimates for all your electrical needs**

**Domestic, Industrial and Commercial**

Safety checks, Rewires, Extensions, Extra lighting and sockets, Fault finding, Test and Inspecting, Fuse board replacements, etc

Fully insured and guaranteed

Over 11 years experience

**Call Les on 07890 541492**



## Beautiful two bedroom holiday cottage for rent in Cornwall

The Boathouse is an idyllic cottage on the spectacular Fowey River Estuary, just two miles from Fowey and a step away from the water's edge.

A converted boathouse and lime kiln, the cottage is one of the oldest buildings in the picturesque village of Golant.

Comfortable and welcoming with magnificent views across the river, there is a log fire for cosy winter holidays and a private terrace ideal for spring and summer barbecues.

Sleeps Four + Cot

Please see the website for full details:  
[www.theboathousecornwall.co.uk/](http://www.theboathousecornwall.co.uk/)

or alternatively call / email

+44 (0)7980 014 471

[info@theboathousecornwall.co.uk](mailto:info@theboathousecornwall.co.uk)

# Church News

Although Christmas seems a long way behind us by now, I must say a huge 'thank you' to everyone who made the seasonal services and events in our village so special. A lot of hard work goes into this season behind the scenes and it is really appreciated.

Christopher our vicar is in the middle of his sabbatical (extended study leave) and our prayers and best wishes are with him and the family for renewal, rest and refreshment. Please continue to contact the ministry team, the office and churchwardens using the details in the magazine as necessary.

There will be several opportunities to explore the Christian faith in more depth in February. The new Gauzebrook Alpha Course has just got under way, with excellent food, good company and stimulating discussions (and my awful jokes). Please contact Phil Daniels on 01249 248219 or philjdaniels@talktalk.net for more information. We will be running a Lent Group in Sherston on Monday evenings using the very popular 'Pilgrim' material. Do contact Susan Harvey 840696 susan.harvey44@hotmail.com to find out more.

We are introducing some new ideas for Lent and Easter this year. These include special 'prayer spaces' in our churches throughout Lent. Each one contains different resources to help visitors spend a few moments of quiet with God. Food for the body as well as the soul

will be provided by the three 'Lent Lunches' hosted by Susan Harvey in Sherston. Details of all the Lent and Easter special events and services will be on the leaflet available in the church, so do pick one up.

Our children's and schools work continues apace, with Mustard Seeds growing and thriving in Sherston Church on Saturday mornings, and Becky has also developed a crèche facility in Sherston during the 9.30am communion service on the first Sunday of the month which is already proving to be a real blessing for families with young children. We have appreciated all the ways Mr Bowditch has grown the link between Sherston Church of England Primary School and Holy Cross Church, and we will be sad to say goodbye to him later this year. In the meantime we continue to enjoy working with Sherston School in assemblies and lessons and in Becky's lunchtime club, as well as special events.

All best wishes *Phil*

*Rev'd Phil Daniels, curate* Holy Cross Church

We invite you to

## Sherston Congregational Church

IN THE BRITISH SCHOOL ROOM, CLIFF RD.

FEB 1<sup>st</sup> - We visit local Churches together.

FEB 8<sup>th</sup> - 11.0am. Visiting Speaker.

FEB 15<sup>th</sup> - 4.0pm. Family Friendly Service.

(Plus Sun. School for CHILDREN with enquiring minds.)

FEB 22<sup>nd</sup> - 4.0pm. Children's Church.

(Plus Sunday school for ADULTS with enquiring minds.)

All Services led or hosted by Pastor Andrew. [awtcharfield@hotmail.co.uk](mailto:awtcharfield@hotmail.co.uk)

07921 390878 or find us on Facebook.

## Foxley Plumbing & Heating

Oil Boiler Installation, Servicing and Repairs  
Oil Tank Replacement  
Heating Installation and Repairs  
Bathroom Installations  
Unvented Cylinder Systems  
No Job Too Small

**Tim Hibbard**

Malmesbury (01666) 822863

Mobile 07966 462202

Email [foxleyph@btinternet.com](mailto:foxleyph@btinternet.com)



## Noah's Ark Day Nursery

Providing a nurturing and stimulating environment for babies and children aged 3 months to pre-school.

Telephone: 01666 840105

E Mail: [noahsarknursery@aol.com](mailto:noahsarknursery@aol.com)



## TALLY HO TRAILERS Horse Trailers

New and Used  
Sales -Service -Repairs  
Van Fautras - Cheval Liberté  
- Ifor Williams

[www.tallyhotrailer.co.uk](http://www.tallyhotrailer.co.uk)

tel: 01666 841149

or 01452 814152

## Grays of Sherston

01666 840728

5 Church St, Sherston, Malmesbury SN16 0LR

\*\*\*



MOT's, servicing and advice  
Tyres, air conditioning and tow bars.  
Our friendly, professional village garage.

**01666 840728** Local quality car care



# HEALS Malmesbury

HEALS Malmesbury is a voluntary organisation. We exist to help and support the residents of our town and surrounding villages who face physical, psychological and personal challenges.

During 2014 we have worked on and resolved more than 50 cases, covering a broad range of needs, including: child residency, domestic violence, homelessness, housing problems, learning disability and vulnerable adult assessments. Our work has transformed the lives of some of the most vulnerable people in our community.

Our important work is led by our volunteer General Manager Alison Cross-Jones and Assistant General Manager Judith Fooks. They are supported by many professionals who provide their services at a discounted rate – or even without charge. We are very grateful to them. Many other businesses and individuals have also supported our work. They have helped us raise much-needed funds as we hope will our stall at the Sherston Market on 7 February. We are very grateful to have been chosen as the local charity for this event.

As well as day-to-day support and help provided to our fellow citizens in need, two recent projects have summed up the work of, and need for, HEALS Malmesbury: our Christmas Shoebox Appeal and our Christmas Eve Isolation Lunch.

The former brought joy to children who woke up this Christmas morning in local refuges or those who had to leave their home due to domestic violence. Kind people provided wrapped shoeboxes filled with toys, books and treats that we were delighted to collect and pass on.

Our Isolation Lunch was sponsored by Waitrose and held on Christmas Eve in Malmesbury Town Hall. Our team of 35 volunteers provided transport, decorated the room, set up and cleared away, while others prepared, cooked and served Christmas dinner. This was provided to 20 vulnerable and elderly people who would otherwise have been on their own. They left with festive food for the following day. The event was also graced by the Mayor of Malmesbury. It was a magical experience for all of us privileged to be there.

2015 will also see the opening our Credit Union under

the banner of the North Wiltshire and Kennet Credit Union and the publication of a special cookbook. This will provide delicious, nutritional, affordable and easy to prepare recipes for those with learning difficulties, visual impairment and dietary needs. These recipes come from our good friend and local nutritionist Dr Eva Detko.

Sadly too many vulnerable and isolated people slip through the welfare net. Others face a family life dominated by the needs of loved ones with conditions like autism and Alzheimer's. Still more are bewildered by the systems and processes that stand between them and the help they need. Demand for our help and advice is growing and we suspect will continue to do so in 2015.

If you would like to stay in touch with our work then why not join our mailing list by emailing [heals.malmesbury@gmail.com](mailto:heals.malmesbury@gmail.com), go to our website [www.healsmalmesbury.com](http://www.healsmalmesbury.com) or follow us on Facebook at Heals Malmesbury ([www.facebook.com/heals.malmesbury.3](http://www.facebook.com/heals.malmesbury.3)).

Better still if you would like to support us in some way then why not get in touch.

## SmallAds

Caring volunteer befriender required to help elderly housebound lady in Sherston with small tasks/errands (1-2 hrs pw). Further info: 07961 072358 [sandy.corke@leonardcheshire.org](mailto:sandy.corke@leonardcheshire.org)

*You can now advertise items for sale or wanted in the Cliffhanger including services required such as gardening or cleaning. Cost is £2 for up to 20 words. Copy should be in paper form and put through the letterbox at 37 High Street by the 15th of the month together with £2 in cash. All monies raised will be donated to charity.*

*Private advertisers only please – no businesses.*

### Charming House to rent in historic Southern France

16 Rue Montmorency is a charming three-bedroom town house located in the heart of Pezenas, a beautiful medieval market town. The house can accommodate 6 people comfortably and was built in the 18th Century. Constructed from ancient stone (probably from the neighbouring castle ruins!) it comes complete with authentic touches such as decorative wrought iron railings and sky blue wooden shutters which are a decorative theme running through Pezenas.

### Light and airy with stunning views

Number 16 is situated on the apex of a row of town houses, and so has light on three sides as well as a roof terrace with stunning views over the old town and Languedoc countryside. Rue Montmorency is a stone's throw from the bars and bistros of the vibrant old town.

Please see the website for more details [www.realsouthoffrance.co.uk](http://www.realsouthoffrance.co.uk)

Or call Jennie Lamont on 07985443863

Quote Cliffhanger on any enquiry



### Sherston Busy Hands Pre-School

**9.10am-12.10pm everyday in the Village Hall...**  
**Now with Lunch Club until 1pm Monday to Friday**

**Age 2 3/4 - 5 years**  
**New outdoor free flow play area**  
**Come along for a taster session!**

**call us on 07841 571943 or 01666 841062**  
**email us on [chair@sherstonbusyhands.org.uk](mailto:chair@sherstonbusyhands.org.uk)**  
**visit us at [www.sherstonbusyhands.org.uk](http://www.sherstonbusyhands.org.uk)**

Registered charity no. 296903

# The Great War in Wiltshire, January 1915

*From the Wiltshire Intelligencer Jan 2015 edition, which is published by Wiltshire Local Studies and Wiltshire and Swindon Archives Service:*

One effect of the war on the home front was an increase in prices, which were to double from the start of the war to July 1916. Corn prices were increasing in the latter part of 1914 and this had an effect on the price of bread early in 1915. In Swindon on January 4th the price of a quarter (4lb) loaf of bread rose from 6½d to 7d and by March the Board of Guardians contracted for a supply of loaves to the workhouse at 7¼d. By November prices of food had risen by 41% from those current in July 1914.

The war did however cause a decline in vagrancy in the county as many tramps of military age joined the forces or took casual work in the building of camps or airfields in the county. In 1915 there was a decrease of 3,740 in the annual vagrancy returns compared with 1914.

The Great Western Railway Works at Swindon were employing large numbers of boys while a considerable number of girls were employed in the offices. It was optimistically understood that these were temporary posts to be relinquished when the former postholders returned from Army service.

In Trowbridge the large Market Hall of 1862 became the mess room of the 2/4th Wiltshire Regiment and the 8th Wiltshire Regiment during their stay in the town from late 1914 to early 1915. Cooking

was carried out by battalion chefs in improvised kitchens in the adjoining market yard. After they left enormous jumble sales were held here to raise funds for Red Cross work and the Prisoners of War Parcel Fund. During the same winter large numbers of soldiers were billeted in the town while undertaking training. The parish church St. James's Hall was given over to these men as a reading and writing room with a buffet staffed by volunteers from among the higher classes of the town providing steaming hot coffee and buttered buns to men who were a long way from home. Entertainments were also provided here by any local people who could play an instrument, sing, act, recite monologues, etc.

In January 1915 Swindonians were told that a warning of six blasts of the GWR hooter would be given if hostile aircraft were approaching. On hearing the warning householders were to extinguish all lights and Swindon Corporation officials were to cut off electric light at the power station. There were warning when Zeppelins were attacking places nearby towns but there were no raids on Swindon.

For the Widest Range of Bedding,

Hanging Basket & Patio Plants in the Area

**FOXLEY ROAD NURSERIES**

Herbaceous Perennials & Alpines

Vegetable and Herb Plants

**Foxley Road, Malmesbury**

Tel: 822171 [www.foxleyroadnurseries.co.uk](http://www.foxleyroadnurseries.co.uk)



## Do you have a mole problem?

With over 30 years experience in traditional mole control I can effectively, discreetly and humanely remove the culprit(s)!  
No gas, chemicals or poisons used and completely safe to children and pets.

**NO MOLE – NO FEE**

Fully insured and references available

Telephone 07766 132934 (Days)

01285 770968 (Evenings)

Member of the British Traditional Molecatchers Register

Member of the Guild of British Molecatchers

BPCA/RSPH level 2 certificate in pest control

**Call now for a free,  
no obligation site survey and quote**

**[www.gbstateservices.com](http://www.gbstateservices.com)**



[www.foot-health-care.co.uk](http://www.foot-health-care.co.uk)



**FOOT HEALTH CARE**

**Corns - Nail Trimming – Verrucae - Hard Skin**

**Athlete's Foot - Ingrown Toenails - Nail  
Infections Cracked Heels (Fissures)**

**Sina Ohms MCFHP MAFHP**

**Foot Health Practitioner**

**Clinics available at:**

**The Oxford Practice, Malmesbury**

**Tel: 01666 824 560**

**The Chippenham Natural Therapy Centre**

**Tel: 01249 443 390**

**Home Visits**

**Tel: 01666 838683 Mob: 07593 324 128**

## Ride On Cycles

**The Mobile Cycle Workshop That Comes to  
You**

**Full range of servicing & repairs carried out  
by a City & Guilds qualified mechanic.**

**Contact Andy on:**

**01454 880872 / 07443333219**

**[andy@ride-on-cycles.co.uk](mailto:andy@ride-on-cycles.co.uk)**

**[www.ride-on-cycles.co.uk](http://www.ride-on-cycles.co.uk)**





**IT IS FAR BETTER  
TO FACE THE BULLETS  
THAN TO BE KILLED  
AT HOME BY A BOMB**

**JOIN THE ARMY AT ONCE  
& HELP TO STOP AN AIR RAID**

**GOD SAVE THE KING**

**lucy tom**

**HANDMADE CURTAINS, BLINDS  
AND HOME FURNISHING  
ACCESSORIES**

We specialise in handmade curtains, blinds and interior accessories. A personal service is offered with home visits and free quotations.

We have a wide range of fabrics and wallpapers available to suit all budgets.

Curtains, roman blinds, cushions, throws, loose covers, headboards, curtain poles, tracks and anything else required.

**Mobile:** 07813 877509 **Workshop:** 01666 826766

**Email:** [lucytominteriors@gmail.com](mailto:lucytominteriors@gmail.com)

**Positively Dogs**



- Behaviour Consultations  
qualified, logical, straightforward advice that works
- 1-2-1 Training  
tailor made to help you and your dog
- Classes  
from puppy to adolescent

for further details or advice please call  
01666 840179 / 07712 128147

[www.positivelydogs.co.uk](http://www.positivelydogs.co.uk)

**C.J. GOUGH**  
PAINTER &  
DECORATOR

**41 The Tarters,  
Sherston,  
Malmesbury,  
Wiltshire  
SN16 0NT**

**Telephone:  
01666 841003**



**T H WHITE**  
In more fields than you imagine

**Gardening Equipment, Country Clothing,  
Safety Footwear, Animal Feeds,  
Household Cleaning Products  
Britains Toys, Tools and Ironmongery.**

**Open to Trade and General Public**

**Monday to Friday 8.00 am to 5.30pm  
Saturday 8.00 am to 12.00 Noon**

**Now in  
Stock  
Logs &  
Kindling**



**Hull  
Shotgun  
Cartridges**

**Large Selection of  
Britains Toys**



**Special offer on  
Anti-freeze,  
Screen wash  
& De-icer**



**Sherston Works, Knockdown, Nr Tetbury, Glos. GL8 8QY  
On the A433 between Tetbury & Didmarton**

**Tel:** 01454 238181 **Fax:** 01454 238772  
[www.thwhite.co.uk](http://www.thwhite.co.uk)

**LEGO NEEDED!**

ALL OLD/UNWANTED PIECES GRATEFULLY RECEIVED....  
FOR (HOPEFULLY) FORTNIGHTLY LEGO  
CLUB (ages 8 - 80!)

TO BE HELD IN BRITISH SCHOOLROOM



PLEASE CONTACT ANDREW ON...

07921 390878 or [awtcharfield@hotmail.co.uk](mailto:awtcharfield@hotmail.co.uk)

# Tolsey News

*Judy Sharp Practice Manager*



## Thank You!

Every year we are overwhelmed by the generosity of patients who send cards with their good wishes for Christmas and bring in many gifts for the doctors and staff. This year is no exception and we would like to say a heart-felt thanks to you all. We would also like to thank all our patients for their careful consideration when using our services over the busy holiday period.

## When to use GP Services

There continues to be unprecedented demand for GP appointments and the media is constantly bombarding us with stories of the pressures on A&E Departments and the inability of the NHS to accommodate these needs. This may be a timely reminder of how to help you make best use of NHS services.

## Self care

A well-stocked medicine chest will help you treat many everyday illnesses and minor ailments at home. For example, a small supply of paracetamol or ibuprofen (available as syrup for children) and other remedies will help you treat common ailments such as coughs, colds, sore throats, indigestion, toothache, headaches and constipation. If you have children, don't forget to include appropriate medicines for them.

## Pharmacists

Pharmacists (sometimes called Chemists) are experts on medicines and how they work. They can also offer advice on common complaints such as coughs, colds, aches and pains and other health issues, such as healthy eating and giving up smoking.

## NHS Walk-in Centre

NHS walk-in centres offer fast and convenient access to healthcare advice and treatment for minor injuries and illnesses. They are open from early morning to late evening, seven days a week. They are run by experienced NHS nurses, and you don't need to make an appointment.

## Doctor's Surgery

The surgery provides a range of services, including general medical advice and treatment; prescriptions; referral to a specialist or hospital (where appropriate); jabs and tests (such as immunisations, blood tests or cervical smears).

Remember to tell your doctor if you have tried or are still taking self-care treatment.

Surgeries are always busy, so be sure to keep to your appointment time and cancel it if you need to; missed appointments waste precious time and resources.

## Out-of-hours GP and dental treatment

If you are ill and urgently need medical or dental help after 6.30pm and before 8.30am, contact the out-of-hours service on NHS 111.

In an emergency (eg serious injury, loss of consciousness, chest pain or suspected stroke), patients should always phone 999. For healthcare advice over the phone, NHS 111 is available 24-hours a day.

## Minor Injuries Unit

Minor Injuries Units are for patients with less serious injuries, such as sprains, cuts and grazes. You do not need an appointment to visit a Minor Injuries Unit. Minor Injuries Units are led by highly qualified nurse practitioners with more experience and expertise than many doctors in this kind of treatment.

Minor Injuries Units can treat a wide variety of problems including:

- Cuts/grazes and lacerations
- Sprains and strains
- Broken bones (fractures)
- Bites and stings (including human/animal bites)
- Infected wounds
- Minor head injuries
- Minor eye infections, foreign bodies & scratches

## Accident & Emergency (A&E) or 999

It is often very obvious when emergency care is needed for serious injury or illness. You should get medical attention by either taking the patient to the nearest Accident & Emergency (A & E) department or by phoning 999 for an emergency ambulance.

An emergency is a critical or life threatening situation such as:

- Loss of consciousness
- Heavy blood loss
- Suspected broken bones
- Persistent chest pain for 15 minutes or more
- Difficulty breathing
- Overdose, ingestion or poisoning

Remember to keep calm, do everything you can to help the person, but don't put yourself in danger and don't give the person anything to eat, drink or smoke.

Unless you need emergency medical attention avoid local A&E departments. Doctors and nurses there are equipped to deal with serious cases of injury and illness, not routine and minor ailments. Calling an ambulance won't necessarily mean you are seen any quicker at A&E as the most serious cases are prioritised.

By making the right choice at the right time, you can get the best possible treatment through the NHS. Many everyday illnesses can be managed easily at home, while advice is freely available from pharmacists or NHS 111.



## Tetbury Art Society Annual Open Lecture 2015

Another year, another good lecture in prospect! This year a lecturer and alumnus from the, now, Royal Drawing School in London. We will hear how the School started, its purpose and methods and how it has affected a student who has studied there. The lecture takes place again at Highgrove House by kind permission of TRH The Prince of Wales and The Duchess of Cornwall on Wednesday 11 March at 2.15 pm. Tickets are £28 each to include refreshments and cakes. Tickets are limited and only available from Gill Ashley 840993.



**Creative Hairdressing** has fully qualified and experienced stylists in all hair lengths and styles, both modern and traditional.

Come and join us for that creative experience so we can create that individual look for you.

For more information or to book an appointment contact

**Creative Hairdressing,**  
3 Market Place,  
Tetbury,  
01666 502949

[www.creativehairdressing.co.uk](http://www.creativehairdressing.co.uk)



## Rural Arts Touring brings Seven Ages to Grittleton

Kepow presents *Seven Ages*, an improvisational comedy show about the seven stages of life, exploring childhood, work, love and retirement... Grittleton Village Hall with Rural Arts Touring presents this show on Saturday 21 March at 7.30pm at Grittleton Village Hall.

'Kepow Theatre Company's magical improvisational comedy show has had sell-out tours in 10 countries on four continents! Taking true stories from their own lives and suggestions from the audience, this is a spontaneous, funny, high energy, highly original comedy theatre show involving, improvisation, masks puppetry and storytelling' ...

'Definitely one of the most feel-good shows around'  
*Paramount Comedy Channel*

'A bizarre assortment of weirdly attired characters... genuinely funny...this well staged and most entertaining production adds to the laurels of Kepow Theatre Company' *The Stage*

Not to be missed! Tickets from Jan 01249 782798  
[dandjeffcoate@btinternet.co.uk](mailto:dandjeffcoate@btinternet.co.uk) Adults £7,  
Concessions £6, Children (under 16) £4.50, Families  
(2 adults & 2 children) £18.50

Bring your own drinks and nibbles!

### SHERSTON DRIVING SCHOOL

Michael Holborow A.D.I.

Tel: 01666 840327

Mobile: 07790890978

[mike@sherstondriving.co.uk](mailto:mike@sherstondriving.co.uk)



**The Angel  
Boutique  
Bed & Breakfast  
and Tearooms**  
Sherston High Street

Tearooms open 8-5 daily  
01666 840039

[www.sherstonangel.co.uk](http://www.sherstonangel.co.uk)  
[tara@sherstonangel.co.uk](mailto:tara@sherstonangel.co.uk)



**Derek James Scott®**  
GARDEN DESIGN & LANDSCAPING LTD

**We Design, We Build  
Beautiful Gardens...**

[www.derekjamescott.com](http://www.derekjamescott.com)  
Tel: 01666 213108

Bradstone Assured Member



**Shear Class & Serenity**

Uni-Sex Hair Salon and Beauty Salon  
Sherston 01666 840840

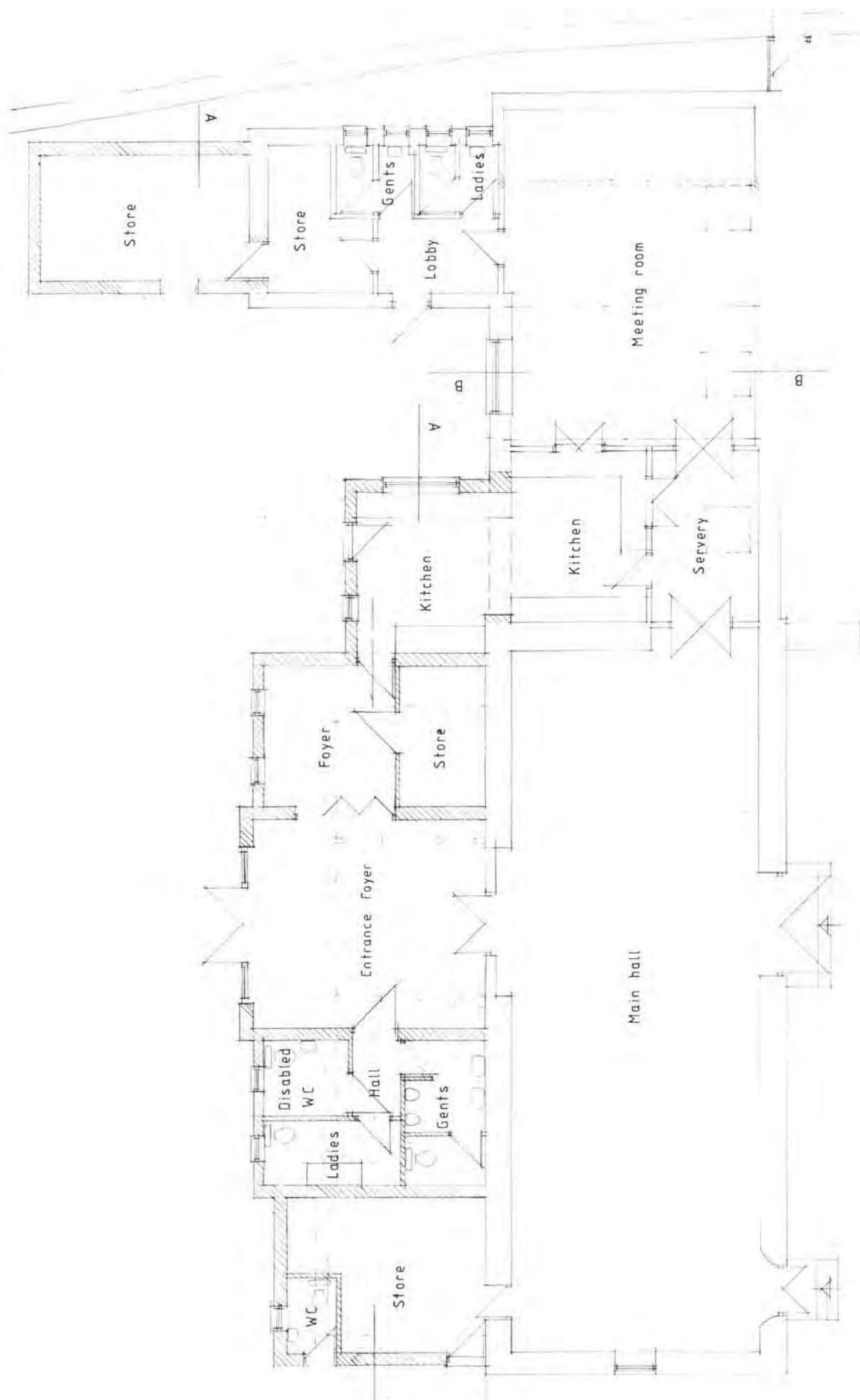
**Tuesdays - Saturdays  
Late Opening and Reduced Rates for  
Senior Citizens on Thursdays**

*For all your Hair & Beauty  
Treatments*

*Appointments not always necessary  
please call in*

**MATRIX**

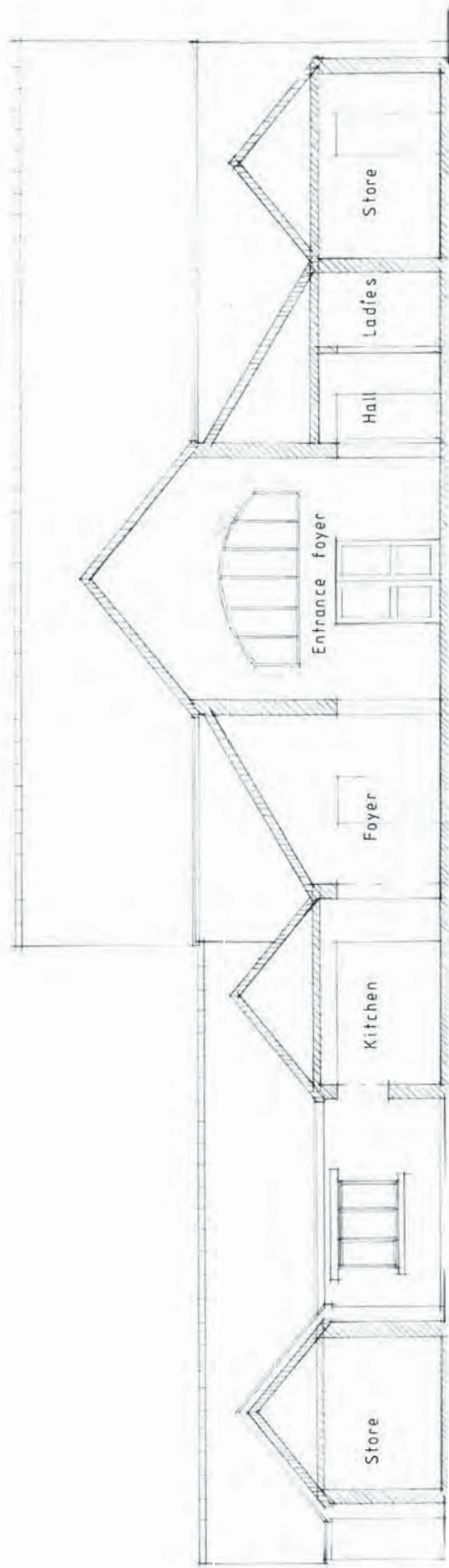
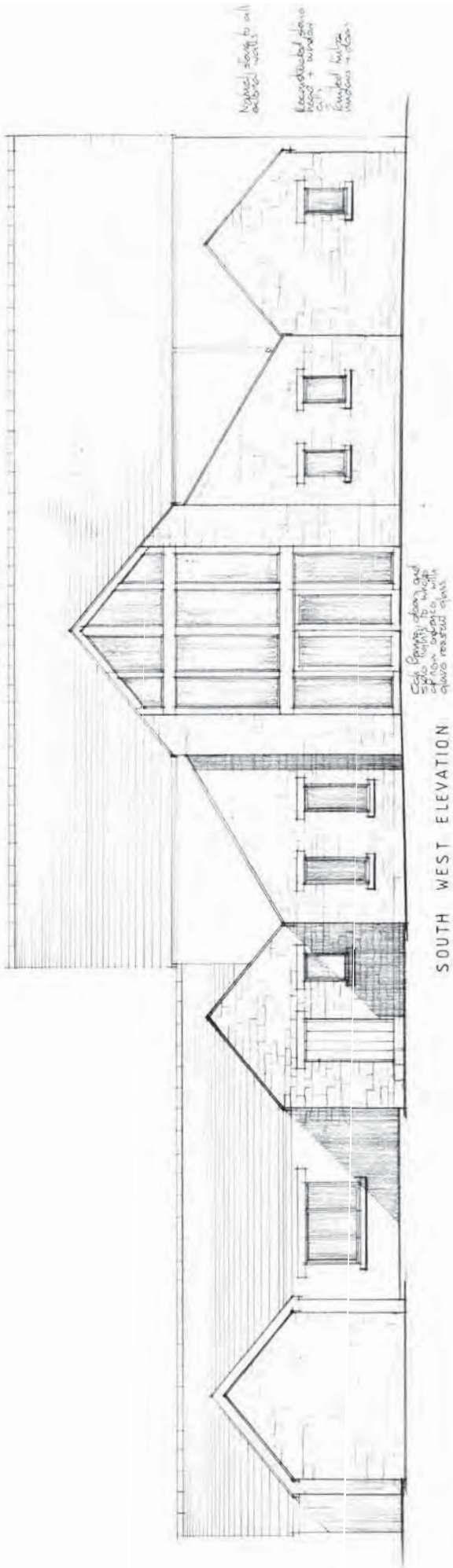
**BIOLAGE**



GROUND FLOOR PLAN

PROPOSED EXTENSIONS AND ALTERATIONS AT SHERSTON VILLAGE HALL, HIGH STREET, SHERSTON, MALMESBURY, SN16 0LH  
 PROPOSED GROUND FLOOR PLAN Scale 1/50





PROPOSED EXTENSIONS AND ALTERATIONS AT SHERSTON VILLAGE HALL, HIGH STREET, SHERSTON, MALMESBURY SN16 0LH  
PROPOSED ELEVATION AND SECTION SHEET 1 Scale 1/50

# Walk on the Wild Side

## How do they cope?

January and February are typically the coldest months of the year although in many years we don't get too many frosts. Our wild animals deal with the short days and limited food supply in quite different ways.

Hedgehogs (the few that are still around) hibernate while badgers don't, they just pile on lots of weight in the autumn and sleep a lot!! Sounds a bit like me....

Lots of other residents hibernate such as bats, frogs and a number of butterflies. Some six species of butterfly hibernate as adults in garages, sheds and anywhere its dry. I know a few people in the village who have a number of butterflies move in every winter.

Many of our insect eating birds will have long migrated to southern warmer climates in Africa and southern Europe where there are lots of insects to eat. Some species of moths only appear in the winter as they know there will be very few birds that will eat them. Like many months, our winter moths have been given some wonderful names such as the pale brindled beauty, spring ushers and mottled umbers.

Some of our birds are resident all year around but research has shown that birds we often think as residents such as blackbirds and robins also migrate and are replaced by other birds from further north. A number of our winter resident birds only come for the winter as it's warmer here compared to their summer home in Siberia and Northern Scandinavia. The redwings and fieldfares find lots of eat in our hedgerows particularly berries.

Over the winter a number of species of smaller birds will flock together including blue tits, great tits, coal tits and various finches. They develop a regular feeding

pattern each day and if they have found your bird feeders early in the season it's likely you will have lots of visitors throughout the winter. If they haven't found your feeders by now you may find (like me) you mostly get jackdaws and wood pigeons. It often takes some really cold weather to cause this pattern to change.

While it's really important you do put food out on a regular basis it's also important to provide fresh water especially when there is a hard frost. A hard frost can kill many birds from the temperature but they can also die from dehydration as there isn't any liquid water!!

If we get a really hard spell and the streams freeze over the kingfishers, herons, moorhens and egrets can really suffer as they simply can't get to their food.

A couple of changes which has effected our farmland birds since the 1940s is the increased efficiency of farming and changing planting times which results in less food over the winter. Over the last few years there has been a fascinating project on the Marlborough Downs where a number of local people have worked with cereal farmers. The farmers donate, or sell at a marginal cost, the poor quality grains that end up in the bottom of the hoppers and the volunteers carry out large scale regular feeding and the results have been really quite amazing. It started as a project to help the Tree Sparrows recover (they have declined by 93% since the 1970s) and the population has increased significantly with many other finches benefiting as well. If any local farmers are interested in such an experiment over this winter please do let me know.

It is important to remember that our wildlife is generally very well adapted to live in our climate otherwise they wouldn't be here. While we have significantly messed around with our natural environment, if we give wildlife a chance it will recover.

Geoff Carss [geoff\\_carss@hotmail.com](mailto:geoff_carss@hotmail.com) or 840995

# Cricket

After another superb win against Marshfield B on 11 January Sherston Magna were still unbeaten and top of division 2 of the Chippenham Indoor League before meeting Spy Park A on Sunday 25 January.

The top of the table clash ended in a thrilling tied game after Sherston Magna looked destined to finish the first stage of the indoor season with a 100% record.

Spy Park A were bowled out for 84 mainly after a spirited fight back by Sherston fielders and bowlers after Spy Park had scored 22 from the first 2 overs.

But amazingly Sherston were then bowled out for 84 with three balls remaining - resulting in a tie.

The game was always in the balance with Sherston losing an early wicket, then fighting back (Ed Reed top scored with a brilliant batting performance) and then losing two wickets in the final over with only one run required!

Sherston Magna are still top of the league which has now split into two sections with the remaining three fixtures against the other sides in the top half of the table.

DIVISION 2	Played	Won	Tied	Pens.	Runs	Balls	Run Rate	Points
Sherston Magna	7	6	1		557	325	1.714	13
Spy Park A	7	5	1		599	363	1.650	11
Christian Malford	7	5			608	365	1.666	10
Biddestone B	7	4			570	337	1.691	8
Marshfield B	7	3			730	404	1.807	6
Sutton Benger	7	2			509	400	1.273	4
Spy Park B	7	1			540	381	1.417	2
Golden Fleece	7	1			578	416	1.389	2

The remaining fixtures (all at Sheldon School) are shown below.

8 February against Biddestone B at 5.30pm

22 February against Christian Malford at 4.20pm

8 March v Spy Park A at 6.35pm



# Busy Hands Quiz Night

There's not long to go now until the Busy Hands Quiz Night on Saturday 7 February in the Village Hall! For all of you lucky people who have already bought tickets from the Post Office, not only are you in for a thoroughly enjoyable evening, but you will also be able to bid for some fantastic lots in the auction. These include:

- a Dyson DC40 vacuum cleaner
- two tickets to any show at the Wyvern Theatre, Swindon
- an 18 pint polypin of Elmer's Bitter from the Flying Monk Brewery
- canapés for six people from Baraka Catering
- one night's accommodation with full English breakfast at the Old Bell in Malmesbury
- a butchery session at Tucks
- a £100 voucher for Coco Bay luxury swimwear

The good news for those of you who are unable to make the Quiz Night is that you have the chance to win some other amazing prizes by buying a ticket for the raffle, which will be drawn on the night. Prizes include:

- 10 tickets for a full day's Paintballing at Hamburger Hill in Bristol,
- a family day pass for 2 adults and 2 children to Westonbirt Arboretum
- a one hour tennis lesson at Nailsworth tennis club
- two tickets to see Peter Pan Goes Wrong at the Theatre Royal, Bath
- an adult and a child ticket for the Cotswold Wildlife Park
- a manicure at Shear Class Hair and Beauty
- a family ticket for Playspace, Bristol

Raffle tickets will be on sale from 3.10pm outside Sherston School on Wednesday 4, Thursday 5 and Friday 6 February and also outside the Post Office on the morning of Saturday 7 February.

For more information, please call Victoria on 841178.

## January 2015 crossword answers:

### Across

1. Baker Street
8. Took
9. Light-heartedness
10. Space invaders
12. Inns
13. Arm bone
16. The Smiths
19. Café
21. Anti-liberal
24. Len
25. Carpenters
27. Elm
28. Elysium
29. Arboreta

### Down

1. Boules Day
2. Kings Arms
3. Rattlebone
4. Tavern
5. Eternal
6. The Eye
7. Corston
8. & 11. Ten sixteen
14. Eton
15. Email
17. Eritrea
18. Scarlet
19. Coche
20. Ferry
23. Semi
26. Tim

### STANTON COMPUTER SERVICES

We come to you!

PC repairs  
Upgrades  
Installation of new hardware  
Wired and wireless networking  
Internet and email set up and coaching  
Virus cleansing

Please call Nick Greene on 01666 837850  
Mobile 07887 721396  
Email: [nick@computerfixer.org.uk](mailto:nick@computerfixer.org.uk)

# Sherston School is 10 years old!

This month Sherston School is 10 years old. Ten years ago – on 21 February 2004 – the children and teachers started at the old school where Mrs Dyson rang the bell for the last time then moved on to the church before processing to the new school for our first assembly led by the Bishop of Bristol.

*Nick Bowditch*

*Head - Sherston Primary School*



**School is delighted to ring the changes**

THE bell tolled for the final time at Sherston Primary School as staff and pupils brought to end more than 150 years of education at its current location.

The school held its final classes at its High Street premises last Monday before teachers began preparations to start life at their new school building in Manor Close on February 21.

The school closed a few days before next week's half-term to allow three special moving days and a teacher development day. Head teacher Nick Bowditch expressed his excitement at the move to the £1.8 million building, which boasts six classrooms, a large multi-purpose hall suitable for P.E. and school assemblies and state-of-the-art technology facilities.

He said: "We are itching to go, it's been nine years in the coming."

"It's a terrific difference in as much as four out of our six classes are in mobiles, we've only got two permanent classrooms and we will have much more opportunity at the new site for sports activities and IT."

"At the moment we are right in the middle of the village and feel very much part of the community."

"What we want to do is take all the good things we've established over the years and take them up to the new site."

The new school will be blessed by the Bishop of Bristol on February 22. Mr Bowditch also hopes the widow of one of the school's former, now deceased, head teachers, will attend the blessing. She is in her 90s and has two great grandchildren at the school.

● Pupils at Sherston primary school ring the school bell for the last time WGRP0118H05



*Articles from the Gazette & Herald and Standard*





# North Wiltshire Villages Flower Club

At our December meeting many members enjoyed our own Christmas workshop, where an array of delightful Christmas arrangements were created. A 'bring and share' supper with Christmas drinks added to an enjoyable evening.

At the time of writing we look forward to our January meeting which is to include a demonstration by Emily Broomhead entitled 'Country Living'. The evening will also see our first competition of the year called 'Twigs and Twine'.

Our February meeting takes us to the Hare and Hounds at Westonbirt for our annual member's dinner.

On 18 March, we have a workshop tutored by Sally Taylor. This will take place at our usual venue,

Crudwell Village Hall, SN16 9HB, 7.00pm for 7.30pm.

As always, visitors and new members are welcome.

Please contact Margaret on 01285 770 639 for more information

## For one night only ... Grittleton Moviola will move to Grittleton House School

Many thanks to the School for helping us out while Grittleton Village Hall is being refurbished.

**What We Did On Our Holiday [12A]**

Thursday 19 February

Doug (David Tennant) and his soon-to-be-ex-wife Abi (Rosamond Pike) travel with their three kids (two boys and a girl) up to Scotland to see Doug's family and celebrate the 75th birthday of Doug's father, Gordy (Billy Connolly). Doug doesn't want his family to know about their split, the kids are running amok and asking awkward questions and Doug's brother Gavin (Ben Miller) continues a long-standing sibling rivalry. All the while, Gordy is wondering why everyone is making such a fuss over being another year older. As the party is being set up and the family rows get louder, he decides to take the kids to the beach, leaving his mobile phone off and dead so that he's not bothered by the rest of his dysfunctional family before the celebration.

Doors open from 7pm. Screening starts at 7.30pm with a short feature film followed by our main film

Tickets £6 available from Lesley 01249 783157 or email [l\\_palmer@btinternet.com](mailto:l_palmer@btinternet.com) [underscore between the l and the p] Please contact Lesley if you need directions [www.moviola.org/](http://www.moviola.org/) Future dates for your diary Thursday 26 March: PRIDE [15] Wednesday 29 April: The Imitation Game [12A]

## Sherston Auto Services



**M.O.T  
Test Centre**



**Servicing & Repairs  
Tyre Fitting and Wheel  
Balancing  
Diagnostic & Service Indicator  
Reset**

**All at competitive rates**

Member of the Ford Blue Oval Club  
Genuine Ford parts fitted

**01666 840522**

Unit 1, Lordswood Farm, Sherston, Malmesbury SN16 0JZ

**FREE COLLECTION & DELIVERY IN THE SHERSTON  
AREA**

Courtesy cars available

**All major credit cards accepted**

**OPEN:**

**Monday - Friday 8am - 6pm  
Saturday 8am - 1pm**

**sharpes**  
WINDOWS AND DOORS

Affordable, Quality Double Glazing

We provide an affordable and quality double glazing service that you can rely on.

- Windows
- Doors
- Replacement Glass
- Repairs and Replacements
- PVCu, Aluminium and Composite Products



**Tel: 01666 840 042 Mob: 07720 717 902**  
[www.sharpeswindowsanddoors.co.uk](http://www.sharpeswindowsanddoors.co.uk)

# Sherston Market

The next market is on Saturday 7 February at Sherston Village Hall from 10 am to 2.00pm. We have some new and innovative stalls as well as many regulars.

At all markets at least one free stall is offered for a charity or voluntary group to raise funds. Anyone interested in running such a stall should please use the contacts below. All these stalls have done well to date so if your group is interested please get in touch. In February HEALS Malmesbury will be looking for your support. Sherston Explorers will also have a stall as will Lin Prior with her famous orange marmalade sold in aid of village hall funds.

For those on face book there is an active Sherston Market page with lots of information about our stallholders and their products.

If you are a local maker, baker, grower or producer and are interested in taking a stall please either use the contact form on the web site [www.sherstonmarket.co.uk](http://www.sherstonmarket.co.uk), phone 07887 814843 / 07769 613627 or email [info@theawkwardsquad.co.uk](mailto:info@theawkwardsquad.co.uk)

## The Baraka Catering Company Ltd.

[www.barakacatering.co.uk](http://www.barakacatering.co.uk)



Catering for ALL events large & small  
Delicious Homemade Canapés  
Supper Parties  
Gourmet Barbeques  
Weddings, Birthdays & Christenings

Please don't hesitate to call Camilla on 07734 251 075  
Or email [camilla@barakacatering.co.uk](mailto:camilla@barakacatering.co.uk)  
with any orders, questions etc.

Finally congratulations to Molly and Jackie Hunt for winning the prize for the best festive stall at the Christmas market – a bottle of Sherston bubbly no less!

## Kristian Pettifor

Designer and maker of bespoke freestanding and fitted furniture.



[www.kristianpettifor.com](http://www.kristianpettifor.com)  
[Kristianpettifor@gmail.com](mailto:Kristianpettifor@gmail.com)  
07922878899

## Optimum Mobility

of Malmesbury



Also walking aids, bathing & household aids  
The Old Dairy, Pinkney Park, Near Sherston  
**01666 840060**  
[www.optimummobility.co.uk](http://www.optimummobility.co.uk)



Hand-made, Bespoke  
Kitchens & Interiors

## WOODCHESTER

Cabinet Makers

Unit N6A Inchbrook Trading Estate  
Woodchester Nr Stroud  
Gloucestershire GL5 5EY Tel 01453 835580  
[www.woodchestercabinetmakers.co.uk](http://www.woodchestercabinetmakers.co.uk)



# Boules News!

Sherston Boules and Carnival 2015 will take place on Saturday 11th July.

Registration for the Boules competition opens on 11th February only until 12th April as we would like to make the draw and let applicants know if they've been successful, by 22nd April.

If possible please register Online through [www.sherston.net](http://www.sherston.net) as this reduces both the processing time and the possibility of errors. Paper application forms will also be available in Sherston Post Office.

The cost per team will be £20, payable if you're successfully drawn: unsuccessful entrants will be placed on a Reserve List. Most of the 128 places will be reserved for local teams, whose captain resides within the five Parishes of Sherston, Alderton, Luckington, Foxley and Easton Grey.

Sponsors who purchase advertising space on one of the pitch 'toblerones' will automatically receive one team place, with the remaining places allocated to visiting teams.



If you or a group of friends would like to help please contact James Pyle ( [james@jamespyle.co.uk](mailto:james@jamespyle.co.uk) ) who is chairman of the Boules and Carnival Committee for this year.

Let's have a great day again in 2015!

*Paul Froggatt*  
Boules Competition Organiser



## IAN ASHBY (SHERSTON)

**Private hire  
6 seat taxi**

**07875 844463  
01666 841224**

## BALCONY HOUSE CELLARS

The Old School, High Street, Sherston SN16 6LL.

The UK's largest selection of wines from South West France from £4.99.

Over 200 vintage wines from Bordeaux, Rioja and Port from the 1930's to 2000. We specialise in stocking and sourcing wines for presents and special occasions including large formats.

Range of regional foods from France, Italy and the UK.

Open evenings, weekends and bank holidays.

Tuesday to Friday 5pm-8pm  
Saturday 10am-8pm  
Sunday 12am-4pm

Free

- Local delivery for 6 bottles and over.
- Menu advice.
- Wine search and sourcing.
- Valuations and purchase, or commission based sale of good quality vintage wines.

We also hold private or corporate wine and food tastings for 4-40 people. Why not have a private tasting dinner party at your house?

For telephone orders and specialist advice please call Neil on 07976 776359.

[www.balconyhousecellars.com](http://www.balconyhousecellars.com)



## HMH CONTRACTING LTD

General Builders

Tel 01666 841412

Email [info@hmhbs.co.uk](mailto:info@hmhbs.co.uk)

- \*Extensions
- \*New Builds
- \*Kitchens
- \*Bathrooms
- \*Listed Buildings and Renovations
- \*Architectural Design and Planning Service

## COMPLETE BUILDING SOLUTIONS FROM START TO FINISH

In Association with Partridge Architectural Services 07833433872  
Email [drawings@partridgehouse.co.uk](mailto:drawings@partridgehouse.co.uk)



	<b>garden design, construction and aftercare</b> <b>bespoke garden buildings and logstores</b> <a href="http://sagegardendesign.co.uk">sagegardendesign.co.uk</a>	<b>Christopher Frost</b> Willows, Brook End Luckington, SN14 6PJ 01666 841175 07973 736912 email: <a href="mailto:chris.sagegardendesign@gmail.com">chris.sagegardendesign@gmail.com</a>	
			

# Groups and Regular Events in and around Sherston

## Holy Cross Church

**The Coffee Shop** - Fair Trade tea and coffee with homemade biscuits and brownies - open on Thurs mornings from 9.30 am - 12 noon

**Sunday services** 8.00am Holy Communion; 9.30am Sung Eucharist (3rd Sunday 9.30am Family Service); 6pm Evensong (3rd Sunday Evening Holy Communion from the Book of Common Prayer) See the Parish Life for more details

**Mustard Seeds** is a Saturday morning club for children aged 4 and over, from 10am - 12noon once a month.

## Congregational Church - in The British

**Schoolroom** 1st Sun we visit local Churches together. 2nd Sun 11am. Visiting Speaker. 3rd Sun 4pm Family Friendly Service. 4th Sun 4pm Children's Church. 5th Sun we worship elsewhere. All services are led or hosted by Pastor Andrew Williams-Tarling Contact awtcharfield@hotmail.co.uk or 07921 390878 (or find us on Facebook.).

**Methodist Church** Services every Sunday at 10.30am apart from 3rd Sunday in the month when service is held at Luckington. For further details see the Parish Life

## Gauzebrook Church for Children

Children are welcome at all the services which are held in the Gauzebrook Group churches but there are some occasions which are particularly for them:

**Junior Church** is held at Court House, Hullavington. This is for children from 3 to 11+. Any children under 3 need to be accompanied by an adult.

Contact Becky Fisher 07974 030212 or becky.fisher@deanery.org.uk

## Little Lights

Every Thurs, 10.30 am in Hullavington church. Children aged 0-5 and their parents/carers come from across the Group, including Sherston, for songs, crafts, activities, Bible stories and snack time. Any questions, contact Chantal on 837522

## Easton Grey Parish Church

See Parish Life for details of services

**Sunday Newspapers** On sale 8am - 11am every Sunday in Sherston village hall.

**Link** provides a voluntary car service for residents living in the Malmesbury area, taking those in need to hospital, the chiropodist, GPs' surgeries and to visit sick relatives. For further information please call 840861 between 9am and 1pm Monday to Friday.

## Ancient Order of Sherston Mangold Hurlers

Why not join us and discover the joys of mangold hurling and all its traditions? For further information email ebeplaced@aol.com.

## Busy Hands Pre-school

Meets 9.10am - 12.10pm everyday in the village hall for 2 3/4 - 5 year olds. Lunch Club Mon to Fri until 1pm and exciting new outdoor free flow area. All childcare vouchers welcomed. For further details call Henry Crawford on 841065. www.sherstonbusyhands.org.uk or email us on chair@sherstonbusyhands.org.uk

**Charity Bingo** In aid of a different local charity each month on the 3rd Friday at 7.30 for 8pm start in the village hall. 50p entry and 30p a book. Light refreshments available.

**Church bell ringing** Practices are every Wednesday 7.30 - 9.00pm. Call Geoff Martin 840375 or come along.

**Clem's Club** Meets 2nd & 4th Tuesdays Feb to June and Sept to Dec 2.30pm - 4 pm in the British Schoolroom (alternating with the Senior Club). All friendly fellas welcome for simple char and chat.

## Drawing Classes in Sherston

There are two classes: on Weds 10am to 12 noon and 1.30 to 3.30pm in the British Schoolroom. Suitable for anyone with enthusiasm, complete beginners or those with some experience and tuition is given in all drawing media, monochrome and colour. Subject matter is provided each week including still life, plants and flowers, fruit and vegetables. The next ten week term starts on 14 Jan. Wanted for a few Wednesdays this term - someone who would be prepared to sit as a model (clothed) for the class to draw. Small payment will be given. For further information please contact Heather Martin (840375) or heather@geoffmartin.plus.com

**Eudo Tae Kwon Do** Thursdays 7-9pm in Sherston primary school hall. For details contact Simon Penfold 824773.

**Footpaths group** The group has published the booklet 'Sherston Walks - a new guide to local rights of way', featuring 9 local walks and is now on sale at the post office. If you would like to learn more about the footpath group and perhaps take part in some of its activities please come along to a meeting. For further information contact Maggie McKenna on 841047 or maggie.mckenna@harriespartnership.com

**Forest School Club** Weekly outdoor activities during term time at both Sherston and Luckington School and further fun extended sessions during school holidays. For further information please contact nikiwalden-forestschool@hotmail.co.uk

**Hogwards** The Help a Hedgehog Hospital charity has a satellite hospital in Tetbury. Mary Hinton 07779 299224 www.helphedgehog.org

## Ingleburn Trefoil Guild

Meets on the 3rd Monday of the month, usually at St. Mary's School Tetbury at 7.30 p.m. Lifts are available for non-drivers in the Sherston/Malmesbury area. Details from Helen Price, 503187 or retreatcottage17@btinternet.com

**Infant and Junior Jazz Dance and Ballet Classes in Sherston** Starting Sept - every Tues 3.30pm £3.50 per session. For more info or to reserve a place please call 07894 991545 or email minetydance@aol.com or www.minetydance.com

## Malmesbury Area Board Meeting

For details see www.wiltshire.gov.uk/areaboards

**Malmesbury Concert Band** Rehearsals on Fri evenings in Malmesbury, 7.15 - 9.15pm. The band performs at local Bandstands, public concerts, etc. and is always on the look-out for brass and woodwind players (and percussion and string bass or guitar) of reasonable sight-reading ability. For further details and to ascertain current vacancies see our website <http://www.freewebs.com/malmesburyconcertband/> and/or contact Tony Fleming, the Musical Director, on 575229 or tony@jacfleming.plus.com

## Malmesbury Community Choir

The Malmesbury Community Choir is a non-audition performing choir that meets for rehearsals in the Old School Room at the Town Hall every Monday evening from 7.30-9.30pm. The waiting list is currently full for ladies, but we would always welcome extra men and young people between 14-21 years old. Membership is £50 per quarter, but membership for U18s is free and U21s is half price. For further information please email [info@malmesburycommunitychoir.org](mailto:info@malmesburycommunitychoir.org), visit the website at [www.malmesburycommunitychoir.org](http://www.malmesburycommunitychoir.org) or [www.facebook.com/MalmesburyCommunityChoir](https://www.facebook.com/MalmesburyCommunityChoir).

## Malmesbury Embroiderer's Guild

The local branch holds monthly meetings at Little Somerford Village Hall. On alternate months there are Saturday workshops on a wide range of topics, and on the intervening dates there is a Tuesday evening talk at 7.30pm. We always welcome newcomers and occasional visitors, although prebooking is essential for the workshops. Just turn up for the talks - non members £5. For further information please phone Heather Martin 840375 or [www.malmesburyembroiderers.blogspot.com](http://www.malmesburyembroiderers.blogspot.com)

**Malmesbury Luncheon Club** Over 60s meet every Wednesday at midday in the Wesleyan Room of Malmesbury Town Hall for a chat and a 2 course lunch followed by tea or coffee. £3.50. Please call Helen Churchill on 840080 if you'd like to attend. New members most welcome. Volunteers also needed to prepare and serve lunch, no washing up.

**Malmesbury Film Society** Memorable new, classic and foreign films are shown at 7.30pm every 3rd Sunday of the month at St. Mary's Hall, Malmesbury - no booking or membership necessary. Join us for unique films and an enjoyable evening out. See our website [www.malmesburyfilmsociety.org.uk](http://www.malmesburyfilmsociety.org.uk) for details on all upcoming films.

## Malmesbury Villages Community Partnership

For details contact Woody Allen 390110 [mark.allen@allenclan.co.uk](mailto:mark.allen@allenclan.co.uk)

## Malmesbury Rainbows, Brownies & Guides

For details contact the Division Commissioner at [malmesbury@wncounty.org.uk](mailto:malmesbury@wncounty.org.uk)



## North Wiltshire Villages Flower Club

(affiliated to National Association of Flower Arrangement Societies - NAFAS) meets at 7.30pm on the third Wed evening of most months of the year at Crudwell Village Hall. Join members come from the surrounding villages to hear speakers and enjoy floristry demonstrations and do workshops and competitions. Call Margaret Stanford on 01285 770 639 to answer any queries or give information about forthcoming events.

**Parish Council Meeting** Takes place on the 2nd Thursday each month at 7.30pm in the village hall. Minutes of meetings can be read online at [www.sherston.org.uk](http://www.sherston.org.uk). Further details contact Sarah Wood on 840197 or [clerk@sherston.org.uk](mailto:clerk@sherston.org.uk)

**The Rattlebone Boules League** Consists of 48 teams playing in 3 Leagues. Contact Tony Towle on 840574.

**Senior Club** Meets at 2.30pm in the British School Room every other Tuesday alternating with Clem's Club.

**Sherston 1016** Fundraising for local good causes and charities. Contact [sherston1016@gmail.com](mailto:sherston1016@gmail.com) or Martin Jacques 07717 424619

**Sherston Badminton Club** We play every Tuesday evening from 7.30pm in the Village Hall from September to the end of May. - New members welcome. For more information contact Ray Clifton on 840592 or email [ray.clifton@wrsi.com](mailto:ray.clifton@wrsi.com)

**Sherston Brownies** Meet every Wednesday during term time 5.45 - 7pm in the Scout Hut. All girls are welcome to join after their 7th birthday, but there is a waiting list. Visit [www.girlguiding.org.uk](http://www.girlguiding.org.uk) and follow the parents link to register your interest, for all other queries contact Tawny Owl (Nicky) at [nicky.gray@btinternet.com](mailto:nicky.gray@btinternet.com)

**1st Sherston Cub Scout Pack** Membership of the Cub Pack is open to those between 8 and 10 ½ years old. The Pack has regular meetings on Friday nights in term times from 6.30pm to 8.00pm. There is a waiting list for Cubs, and those interested should contact Greg Hughes, Baghera, Cub Scout Assistant Leader, [greghughes\\_2000@yahoo.co.uk](mailto:greghughes_2000@yahoo.co.uk) to obtain an application form

**1st Sherston (John Rattlebone) Scout Troop** Is open to young people from the village and surrounding parish from the ages of 10 ½ to 13 ½. We meet at the Scout hut on Tuesday nights from 7.00pm to 9.00pm during school term times. To join contact Riaan van Rooyen [riaan@pulse-software.co.uk](mailto:riaan@pulse-software.co.uk) There is currently a small waiting list to join.

## Sherston Whitewall Explorers

You don't need to have previously been a member of scouts or guides to join us, just be aged between 13 ½ and 18 and free between 8.30 and 10pm on a Friday night during term time; for further information please contact Darren Walsh - 841043 or Ewan Blair - 840096 - [whitewallexplorers@googlemail.com](mailto:whitewallexplorers@googlemail.com)

**Westonbirt Guides** Meet in Querns Hall, Rosehill School, Westonbirt 5pm - 7pm every Wednesday. Sherston Brownies tend to come along if they don't join Scouts. Details from Ann Bye, 01454 218152, [ann.bye@virgin.net](mailto:ann.bye@virgin.net)

**Sherston Drama Group** The Drama group puts on plays and pantomimes in the Village Hall. If you are interested in taking part or helping out contact Richard Skeffington (Chairman) [richard.skeffington@virgin.net](mailto:richard.skeffington@virgin.net) Tel. 840092 or Graham Instrell (Vice Chairman) [ginstrell@hotmail.co.uk](mailto:ginstrell@hotmail.co.uk) Tel. 840978

**Sherston FC** The club play in the Stroud league at Knockdown Park on Saturday afternoons - spectators and new players welcome. Contact Pete Brock on 07912 777647 or [peter.brock666@btinternet.com](mailto:peter.brock666@btinternet.com)

## Sherston Ladies' Swimming Club

Want to get fit? Lose weight? Our Club is a friendly and sociable group open to any ladies of any swimming ability from Sherston and the surrounding area. We swim at Westonbirt Leisure Centre on Wednesday evenings from 8 - 9 pm. Everyone swims at their own pace although there is a lane for faster swimmers. It costs £5 per week, £40 for 10 weeks. For further information please phone Maggie (840969), Annabel on 840592 or Heather (840375).

## Sherston's Living Churchyard

Please help maintain the living churchyard on the second Wednesday of the month from 2pm to 4pm, weather permitting. Please check with Sue for timings each month. Church of the Holy Cross Further details contact Sue Robinson on 841263

**Sherston Magna Cricket Club** Sherston Magna has a senior cricket side that plays league cricket on Saturdays and friendly cricket on Sundays throughout the summer. If you are interested in playing please contact [sherstonmagna@yahoo.co.uk](mailto:sherstonmagna@yahoo.co.uk) or turn up to nets - details below.

Senior practice nets take place from 6.15pm every Wed throughout the summer at the cricket ground at Pinkney Park.

Two junior league sides (under 13s and under 15s). Junior coaching has finished now for the season but for the latest info check out the

junior facebook page [www.facebook.com/groups/SMCCJuniors/](http://www.facebook.com/groups/SMCCJuniors/)

**Sherston Netball Club** Training every Monday 7.30pm at Westonbirt Leisure Centre. All ages and abilities welcome. £3 per session. For more info, please contact Ailsa (07971 845206), Lauren (07885 597429), Saara (07739 552336) or Kate (07792 064438).

**SH.O.C.C.** The choir meets this term at 7.30pm each Wednesday until 25 Mar in the British Schoolroom. New Musical Director but same price to join - £3 per session. Further information from Lucy Lawrance on 840778 (evenings) or [lucy@sherston.plus.com](mailto:lucy@sherston.plus.com)

**Sherston Photography Forum** A monthly group has formed in Sherston for anyone with an interest in photography 2nd Tuesday of each month at 7.30pm in the Village Hall.

For details call Nick Holland on 841019 or [nholland63@btinternet.com](mailto:nholland63@btinternet.com)

**Sherston Pilates** Classes held on Tuesday lunchtimes and Thursday evenings at the village hall. Run by Saara Sharmar, Chartered Physiotherapist. All ages and abilities welcome. For more details contact Saara on 07739552336 or [sherstonpilates@gmail.com](mailto:sherstonpilates@gmail.com)

## Sherston Tennis Club

The tennis courts are located on Knockdown Road, open to all over the winter. Children's Sat am coaching will start after Easter. If you would like to be emailed with details nearer the time, please contact Sophie Cheetham on 07786 990045 or [sophicheetham@gmail.com](mailto:sophicheetham@gmail.com). If you're interested in joining the club or using the courts, please contact Nic Riley on 840682 or [nic50riley@gmail.com](mailto:nic50riley@gmail.com).

**Sherston Theatre Club** Excursions with a Sherston High Street-to-venue return coach service. Annual fee £20. Listings under [www.communigate.co.uk/wilts/sherstontheatreclub/](http://www.communigate.co.uk/wilts/sherstontheatreclub/) or contact Helen Quirk on 840516 or [helenandjim@thequirks.plus.com](mailto:helenandjim@thequirks.plus.com)

## Sherston Toddler and Baby Group

The group is a fun way for babies, toddlers and their parents to meet and play. We meet at 10 -11.30am each Tuesday in the Scout Hut with toys for all stages from wrigglers to toddlers, craft activities, music and snacks for all, not to mention a much-needed cup of tea/coffee for the deserving parent. Further details contact Sophie Cheetham, [sophicheetham@gmail.com](mailto:sophicheetham@gmail.com) 07786 990045 or alternative like us on Facebook for regular updates [www.facebook.com/sherston.toddlers](http://www.facebook.com/sherston.toddlers)

## Sherston Village Hall

Available for hire by all. Ideal for meetings, events, parties etc. For details Chris and Tony Weedon 841377 or email [dogleg3@gmail.com](mailto:dogleg3@gmail.com)

**Sherston W.I.** Meetings from Mar to Oct are on the first Thurs each month at 7.30pm in the Village Hall. Visitors are always welcome £3.50 - no need to be a Sherston resident. For further information contact the Secretary on 840578 or [jillwoodward222@btinternet.com](mailto:jillwoodward222@btinternet.com)

**Sherston Young Craft Group** Every Monday 6.45 - 8.15pm in the village hall (children 9 years and over). £3 (incl all materials) per evening paid in advance of each half term. To join, please contact Victoria Parish on 840071 or email [vparish@btinternet.com](mailto:vparish@btinternet.com)

**Splash Dance** Dance classes for 2 to 12 year olds including ballet, modern and tap. Every Wednesday afternoon in the village hall. Prices are £35 per term with the first lesson free. For details contact Charlotte on 01453 886632 or [charlotte@splashdance.co.uk](mailto:charlotte@splashdance.co.uk)

**Tetbury Chess Club** Meet every Wednesday at the Ormond Hotel from 10am. If anyone is interested please contact Colin Francis on 505835 or email [colval08@btinternet.com](mailto:colval08@btinternet.com)

**WEA Sherston Arts, Literature and History Courses** The WEA (Workers' Education Association) offers courses on the Arts, Literature and History in the British School Room, Cliff Road. For more information or to book a place contact Warwick or Pat Jones on 840764 or [warwick.jones@btinternet.com](mailto:warwick.jones@btinternet.com).

**Village Hall 300+ Club** For an annual subscription of only £6, give yourself the opportunity of winning a cash prize in every monthly draw whilst supporting the Village Hall. If you would like to join, or need more information, contact the coordinator, Lin Prior on 840846.

**Wiltshire Walks** The walk lasts approximately 45 minutes and often ends with a cup of tea or coffee. Further information contact Sarah Sims on [sarah.sims@wiltshire.gov.uk](mailto:sarah.sims@wiltshire.gov.uk) or 07846100233. For a full list of walking groups in Wiltshire please visit [www.wiltshire.gov.uk/getwiltshirewalking](http://www.wiltshire.gov.uk/getwiltshirewalking).

**Wild Yoga** Mon evenings during term time - 6.45-8pm and 8.15-9.30pm in the village hall. Drop in rate £9 reducing to £7.50 if you take up the course. Contact Theo 07818 401110 or [theo@wildyoga.co.uk](mailto:theo@wildyoga.co.uk)

*If you run a club, society or organisation in Sherston that holds regular events such as the above and wishes to be listed, please supply your details and we will add them to the Regular events list. If you have a particular event then please write a short piece about it and we can include it as an article and put the details in the What's On list for that month.*

PLEASE MENTION TO ADVERTISERS THAT YOU SAW THEIR ADVERT HERE FIRST

# WHAT'S ON

## What's on in 2015

### Dates for your diary

#### June

20/21 Open Gardens

#### July

11/12 Boules Day

#### October

9-18 Sherston Arts Festival

If you're planning a community event in the parish why not let the Cliffhanger have the basic details as soon as possible? Email [info@sherstoncliffhanger.co.uk](mailto:info@sherstoncliffhanger.co.uk) to add the event to this list. Everyone will then know what's occurring in good time and it will help prevent events clashing.

## Sherston The Rattlebone Inn

**Monday Quiz Nights** Every Monday at 7.30pm Free entry and prizes for the winning team

**Annual 1016 Pancake Eating Competition** Shrove Tues 17 Feb

**Live music: The Killertones Big Ska Nite** Sat 21 Feb

Check boards for more details of events

For further details call 840871 or follow on Twitter

#GavinHunt@Therattlebone or visit [www.therattlebone.co.uk/](http://www.therattlebone.co.uk/)

## Busy Hands Pre School

**Annual Quiz Night Raffle and auction.** Sat 7 Feb Bar opens 7.30pm at Sherston Village Hall Quiz starts at 8pm £20 for a team of up to 4 All proceeds to Busy Hands Pre-school For further details call Tickets on sale at the Post Office or call Victoria on 841178

## Art Exhibition at Shear Class Salon

The paintings of the late Elizabeth Hatt on display in Feb and Mar. Anyone can call in to see them – you don't have to be attending the salon. A rare chance to see a selection of Elizabeth's work, who died last year, a popular Sherston figure and a lovely lady.

## Sherston WI Talks

AGM followed by talk on Wood Turning with Derek Edwards 2 Feb at 2.30pm

Open Meeting with a talk by Marc Allum of The Antiques Roadshow 16 Apr at 7.30pm Tickets for the general public for this event will be on sale at the post office For further details call Jill Woodward 840578 or [jillwoodward222@btinternet.com](mailto:jillwoodward222@btinternet.com)

## Sherston Market

Local crafts and produce, cake stalls, Baraka Catering, Aunt Addie's Farm Project fresh local vegetables, cheeses from Brinkworth Dairy 10am – 2pm Sat 7 Feb Sat 7 Mar Sat 4 Apr Sat 9 May Every month a free stall in the lobby is made available to local charity or voluntary group to raise funds. See [www.sherstonmarket.weebly.com](http://www.sherstonmarket.weebly.com) for dates and a contact form should any prospective stallholder wish to get in touch or call 07887 814843 or 07769 613627 or email [info@awkwardsquad.co.uk](mailto:info@awkwardsquad.co.uk)

## 1016 Pancake Eating Competition

Shrove Tuesday 17 Feb from 7.30pm at The Rattlebone Inn £2 entry All proceeds to 1016 Christmas vouchers for the elderly. For further details call Richard Langley on 840112 or 07879 612776

# perfectly you

cosmetic injections

Treatments that help soften the fine lines and wrinkles on your face:

- Free personal consultation
- Forehead lines, frown lines, crows feet
- Skin rejuvenation, scar and blemish reduction
- Treatment for excessive underarm sweating

Dr Pip Pettit BM FRCGP Aesthetic Practitioner, Sherston, Wiltshire Tel: 0788 7582 233 [www.perfectly-you-aesthetics.co.uk](http://www.perfectly-you-aesthetics.co.uk)

### Prestige Computer Services Ltd

Computer Systems Sales and Repair

- Over 28 Years Experience
- PC Laptop & MAC Computer Systems
- New XP PRO Vista Win 7 & Mac Systems
- Slow and Sluggish Computers Made Fast Again
- Systems Up Grades & Software Installation
- Data Recovery
- Hard Drive Duplication
- Home and Office Service Calls
- Virus removal & Anti Virus Software Installation
- Broadband & Wireless Internet Connections
- Email Account & Access setup
- Free Off Road Customer Car Parking

Tel: 01666 824031 - 825620

Unit 4 Park Rd Centre Malmesbury SN16 0BX



### A fun and stimulating environment!

Luckington Pre-School uses the renowned Montessori ethos of teaching to provide children with the best foundation for the future learning.

Open 5 mornings a week during term time, we offer care and education for children aged between 2 ¾ and 5 yrs. Afternoon sessions are also available in the summer term. For more information call Trish 01666 840028.

[www.luckingtonpreschool.org.uk](http://www.luckingtonpreschool.org.uk)



### 5\* holiday cottage Lantern House - Sherston



family & friends  
visiting?

flexible week & short break  
rentals

For more details & bookings

tel: 01666 505807

mob: 07900 656498

email: [lanternhouse@cotswolds.plus.com](mailto:lanternhouse@cotswolds.plus.com)

website: [www.cotswolds.plus.com](http://www.cotswolds.plus.com)



## Sue's Strolls

Sun 8 Mar Please assemble at the village hall for 10.00am with a return Rattlebone Inn just around 12noon for seasonal refreshments. As ever children and well behaved dogs, the latter on leads, are very welcome. The walk is entirely free and there is no need to book a place – just turn up on the day.  
For further details call Sue McKechnie 840601 or [susannemckechnie@hotmail.co.uk](mailto:susannemckechnie@hotmail.co.uk)

## Art Exhibition At The Angel

Paintings by Sherston artist Gill Ashley and mosaics by Lou Fitch-Peyton local art on display and some for sale  
more details for Gill at [www.tetburyartsociety.org.uk/Gallery\\_ashley.html](http://www.tetburyartsociety.org.uk/Gallery_ashley.html) and for Lou [www.louopnermosaics.com/](http://www.louopnermosaics.com/)  
For further details call 840039 or [tara@sherstonangel.co.uk](mailto:tara@sherstonangel.co.uk) or visit [www.sherston-angel.co.uk/](http://www.sherston-angel.co.uk/)

## Upcoming events at Holy Cross Church

Check the Parish Life for more details

Lent Group using the very popular 'Pilgrim' material. in Sherston on Monday evenings Do contact Susan Harvey 01666 840696 [susan.harvey44@hotmail.com](mailto:susan.harvey44@hotmail.com) to know more

3 'Lent Lunches' hosted by Susan Harvey in Sherston. Details of all the Lent and Easter special events and services details will be available on the leaflet available in the church, so do pick one up.  
Alpha course till Easter These evenings involve an excellent meal, a stimulating video, and discussion which you can join in as much or as little as you like Please contact Phil Daniels 01249 248219 [philjdaniels@talktalk.net](mailto:philjdaniels@talktalk.net) or Henny Metters for more information

## Sherston Drama Group

Spring Play Seeds of Doubt by Peter Gordon Wed 8 to Sat 11  
Apr 7.30pm Doors open 7pm Tickets £6.50/£5.50 concessions,



Freelance  
**Tetbury Bookkeeper**  
**Philippa Lark**

\* Local References \*

Keep accountancy costs down with excellent quality bookkeeping records

[www.tetburybookkeeper.co.uk](http://www.tetburybookkeeper.co.uk)  
01666 505824  
07771 914512

**McTimoney Chiropractic**  
**Tolsey Surgery, Sherston**

A gentle & effective treatment for  
back, neck & shoulder pain,  
migraines, sports injuries & more

Emma Newby BSc MMCA  
01666 841 402  
[www.mctimoneychiro.co.uk](http://www.mctimoneychiro.co.uk)

**DJ. HICKS**  
**ANTIQU**  
**FURNITURE**

SALES, RESTORATION & UPHOLSTERY  
Unit 1a Warren Business Park, Knockdown  
Nr Tetbury, Gloucestershire GL8 8QY

Tel: 01454 238004  
Mobile: 07889 655152

Email: [djhicksantiques@hotmail.co.uk](mailto:djhicksantiques@hotmail.co.uk)  
Website: [www.djhicksantiquefurniture.co.uk](http://www.djhicksantiquefurniture.co.uk)

including interval refreshments - on sale at the Post Office or via [sherstondramagroup@gmail.com](mailto:sherstondramagroup@gmail.com)

**Sherston Great War Experience** with Sherston Drama Group and ShOCC on 8-9 May We intend to present an idea of what it was like for local people 100 years ago, both in the Services and back at home. If you would like to offer any stories, anecdotes, reminiscences, or take part yourself, please get in touch with the Richard. Village Hall

For further details call Richard Skeffington 840092  
[sherstondramagroup@gmail.com](mailto:sherstondramagroup@gmail.com)

## Sherston Whitewall Explorers

**Fundraising for Iceland trip** A Group from Sherston Whitewall Explorers are joining with over 50 other Explorer Scouts from the North Wiltshire District to spend a week in Iceland during the summer As is the case these things don't come cheap so we will be at the Sherston Market on February 7th as the Charity Stall. We will be selling tables for a Table Top Sale on 22nd March at The Scout Hut as well as a music quiz & sponsorship for a leg wax by one of the explorers.

Table Top Sale on 22nd March at The Scout Hut

## Sherston Arts Festival

9 -18 Oct If you would like to join the planning committee or can offer help in any way, please get in touch with Heather Martin 840375 or Pat Jones 840764. Ten days of arts events suitable for all ages including art and photography exhibitions, concerts, lectures, Family workshops, Scarecrow Trail

For further details call Heather Martin 840375 / [heather@geoffmartin.plus.com](mailto:heather@geoffmartin.plus.com) or Pat Jones 840764 / [warwick.jones@btinternet.com](mailto:warwick.jones@btinternet.com)

**M.Vincent**  
**Windows & Glazing**

For all your glazing needs  
Wiltshire & Gloucestershire areas  
Fast, friendly and efficient service  
Available at your convenience 7 days a week  
CALL FOR YOUR FREE QUOTATION  
07890 138453 / 01666 460106  
[enquiries@mvincentwindows.co.uk](mailto:enquiries@mvincentwindows.co.uk)  
[www.mvincentwindows.co.uk](http://www.mvincentwindows.co.uk)

**NA Noble James Associates Ltd**

[Advice@noble-james.co.uk](mailto:Advice@noble-james.co.uk)

[www.noble-james.co.uk](http://www.noble-james.co.uk)

**\*FREE INITIAL CONSULTATION\***



- INVESTMENTS
- RETIREMENT PLANNING
- MORTGAGES
- TAX PLANNING
- PROTECTION
- HOUSE/CAR INSURANCE

**INDEPENDENT FINANCIAL ADVICE**

**TEL STROUD (01453) 755567 or**  
**Julian Law, 7 Manor Close, Sherston on**  
**07866 000056**

AUTHORISED AND REGULATED BY THE FINANCIAL CONDUCT AUTHORITY

PLEASE MENTION TO ADVERTISERS THAT YOU SAW THEIR ADVERT HERE FIRST

## Pinkney Party People Ball -Tickets on Sale

**The Arabian Nights Ball 2015** The black tie ball, for 250 guests, will be held on Sat 30 May on the village hall field.

Ticket sale event at 11am on Sat 7 Feb outside The Rattlebone. Tables of 10 (or individual) tickets will be available. In previous years all tickets have been sold at the ticket release event, so get yourselves organised

This year, for a fab themed evening with a drink on arrival, 3 course meal from the kitchens of Philip Gilder of Manor events, entertainment of the most extraordinary kind, and dervish-like dancing, the cost is £75 per ticket. What you need - the names of 10 people who are willing to share an evening that will be truly magical, and a means of payment either cash, BACS or cheque payable to Sherston Winter ball. If you can't get a full table of 10 do not fret- we will try to put partygoers together to make tables of 10 if needed.

## WEA courses

**Picasso and Matisse Course** by Paul Chapman 6 weekly meetings starting on 16 Jan to 20 Feb 2015 10am until 12.15 Course Fee: £40 (Free to anyone in receipt of a means tested benefit) Village Hall For further details call Enquiries and bookings contact Warwick or Pat Jones on 840764 or on [warwick.jones@btinternet.com](mailto:warwick.jones@btinternet.com).

## Sherston & Grittleton Rural Arts Wiltshire

**Rural Arts Touring presents Seven Ages** An improvisational comedy show about the seven stages of life, exploring childhood, work, love and retirement - a spontaneous, funny, high energy, highly original comedy theatre show involving improvisation, masks puppetry and storytelling Sat 21 Mar at 7.30pm at Grittleton Village Hall. Bring your own drinks and nibbles

**The Ugly Duckling - Le Petit Artist Children's Theatre** This show, suitable for families and young children is brought to us by Rural Arts Wiltshire and is being presented to raise funds for the Village Hall. Put the date in your diary, more details later. Sat 26 Apr 3pm Village Hall For further details call Jan Jeffcoate 01249 782798 or [dandijeffcoate@btinternet.com](mailto:dandijeffcoate@btinternet.com) or visit [www.ruralartswiltshire.org.uk](http://www.ruralartswiltshire.org.uk)

## Knockdown The Holford Arms

Live Music every weekend Check boards for more details of events For further details call 01454 238669 or [info@theholfordarms.co.uk](mailto:info@theholfordarms.co.uk)

## Westonbirt The Arboretum

**Gruffalo's Child Trail** till 28 Feb - free after admission Activity packs £1 Dec - Feb admission prices Adults £5 Concs £4 Children £2 Closed Christmas Day

**Specialist Wood Sales** 2nd Saturday and Sunday every month 10am-1pm in aid of FOWA

Check website for details of events, wood and photography courses, guided walks and family fun days

**Summer concerts:** Forest Live June: Paloma Faith Fri 19 Jun ; Tom Odell Sat 20 Jun ; TBA Sun 21 Jun ; Fri 10 Jul: Robert Plant and The Sensational Space Shifters Tickets: £34.50 - £38.50 (plus £3.85

booking fee) on sale from the Forestry Commission box office tel: 03000 680400, or buy online at [www.forestry.gov.uk/music](http://www.forestry.gov.uk/music) Dec - Feb admission prices Adults £5 Concs £4 Children £2 For further details call 880220 or visit [www.forestry.gov.uk/westonbirt](http://www.forestry.gov.uk/westonbirt)

## Cotswolds Cotswold Rural Skills

**Hedge laying for beginners** - Somerset style Hedge laying for beginners

- Midlands style 3-4 Feb Westonbirt 21-22 Feb Chipping Norton

**Woodland Coppicing** 15 and 24 Feb Coberley

**Introduction to Horse Logging** 21 Feb Coberley

**Cotswold Tile Roofing - Beginners** 7-8 Mar Naunton

**LANTRA Level 2 (Intermediate) Dry Stone Walling** 9-16 Mar

Northleach 2 day course £109 1 day £59

For further details call David Molloy on 01451 862000 or [david.molloy@cotswoldsanb.org.uk](mailto:david.molloy@cotswoldsanb.org.uk) or visit [www.cotswoldsanb.org.uk](http://www.cotswoldsanb.org.uk).

## Easton Grey Whatley Manor

**Thursday evening cinema** Thurs 19 Feb - Magic in the

**moonlight** starring Colin Firth £23 includes a choice of either a glass of wine, a bottled beer or soft drink. A small tub of delicious ice cream (choice of flavour) and of course popcorn.

**Sunday Cinema** £8.50 includes your cinema ticket for the screening and popcorn. In addition, on the day, choose one, two or three courses from the a la carte lunch menu in 'Le Mazot' brasserie The Sunday Cinema Screenings must be pre-booked Sun 15 Jan **Magic in the moonlight**

Films coming soon: Before I go to sleep; What we did on our holiday; Hundred foot journey; The Imitation Game; Mr Turner

For further details call 834026 or visit [www.whatleymanoor.com](http://www.whatleymanoor.com)

## Malmesbury

### Events at Malmesbury Children's centre

Look out for our latest newsletter and new programme details on our website [www.malmesburycc.org](http://www.malmesburycc.org) Library

For further details call 825566 or email: [malmesburycc@spurgeons.org](mailto:malmesburycc@spurgeons.org) or visit [www.malmesburycc.org](http://www.malmesburycc.org)

Traditionally finished COTSWOLD STONE  
of the very finest quality  
direct from our quarry



**Walling Stone •**  
**Building Stone •**  
**Roofing Tiles •**  
**Garden Stone •**

Tel: **01666 840443**  
Fax: **01666 840191**

[www.knockdownstone.co.uk](http://www.knockdownstone.co.uk)  
Knockdown Stone,  
Halfway Bush Farm, Knockdown,  
Tetbury, Gloucestershire GL8 8QY

## 精氣神

Acupuncturist

Julia Tully

BA (Hons), BSc (Hons), Lic.Ac, MBACC.

Now has a clinic  
in Sherston.  
For further information  
or for a consultation,  
please call

07811 437633

[www.juliatully.co.uk](http://www.juliatully.co.uk)


## Guaranteed seasoned logs and more...

Friendly and reliable local supplier

01453 808330

or buy online at [www.elcombefirewood.co.uk](http://www.elcombefirewood.co.uk)

Elcombe  
**Firewood**

woodcare 1996  Find us on facebook.

## MOBILE BEAUTY THERAPIST

CND SHELLAC-MANICURE

PEDICURE-FACIALS

MASSAGE-MAKE UP

WAXING-EYE CARE

PAMPER PARTIES.

Kerry Outlaw I.H.B.C

To make an appointment call  
07811364851 or email  
[kerryhannington@aol.com](mailto:kerryhannington@aol.com)  
[kerrybeautyathome.webs.com](http://kerrybeautyathome.webs.com)



beauty@home

...in the comfort of your own home.



## MP's Surgery

Local MP surgery with James Gray MP 12 noon - 1pm  
Sat 21 Feb, Sat 21 Mar  
Hobbes Parlour, Malmesbury Town Hall  
For further details [www.jamesgray.org](http://www.jamesgray.org) or email  
[jamesgraymp@parliament.uk](mailto:jamesgraymp@parliament.uk) for online surgeries

## Malmesbury Abbey Music Society

Cantores in concert with a string ensemble one of the Cotswold's most accomplished amateur choirs present a mixed concert of music, part choral and part instrumental, on a theme of The Power of the Spirit Sat 21 Feb

**Cellophany** eight young professional cellists, will fascinate us by playing a very varied programme with their own unique vibrant, sonorous and exhilarating sound 2 May

**VOCES8** 20-Jun 'Eventide' with a plainchant thread exploiting the wonderful acoustic qualities of Malmesbury Abbey.

For further details call David Barton 824924 [d.barton763@btinternet.com](mailto:d.barton763@btinternet.com) or visit [www.malmesbury.com/mams](http://www.malmesbury.com/mams)

## Malmesbury Abbey Skate

Wed 18 -Fri 20 Feb for more details on times see [www.facebook.com/abbeyskate](http://www.facebook.com/abbeyskate), [www.malmesburyabbey.com/skate](http://www.malmesburyabbey.com/skate) or email us on [john@malmesburyabbey.com](mailto:john@malmesburyabbey.com) Skating, Scooter, Demos, Competitions, Music, Cafe and workshops.

## Malmesbury Film Society

Showing world and classic films every 3rd Sun of the month at 7.30pm. Tickets £5, no booking required.

**Unknown Things** Sun 15 Feb 7.30pm

**M (1931 German - with subtitles)** Sin 15 Mar 7.30pm

**Tracks** Sun 19 Apr 7.30pm

St. Mary's Hall, Malmesbury

For further details visit [www.malmesburyfilmsociety.org.uk](http://www.malmesburyfilmsociety.org.uk)

## Malmesbury & District University of the Third Age

U3A is a unique organisation which provides educational, creative and leisure opportunities for retired and semi-retired people to come and learn together, drawing upon the knowledge, experience and skills of their own members to organise and provide interesting talks.

**U3A - talk with guest speaker Paul Deacon** The History of 20th Century Western Art Thurs 26 Feb

**Guest Speaker Sevington Victorian School - Dinah Starkey** Thurs 26 Mar

Assembly Rooms at the Town Hall

For further details call Membership Secretary Julia Batty on 01249

720327 or visit [www.malmesburyu3a.org.uk](http://www.malmesburyu3a.org.uk)

## Doughton Tetbury Art Society

**Roy Baker Memorial Lecture - The Royal Drawing School** Will Topley, Senior Faculty at the Royal Drawing School, will speak alongside an alumnus of the School's prestigious Drawing Year postgraduate scholarship programme at The Orchard Room, Highgrove House, Tetbury, Gloucestershire by kind permission of TRH T Wed 11 Mar 2.15pm £28 includes tea & cake. All proceeds to the Prince's Charities Foundation. Advance booking only from Gill Ashley. The Orchard Room, Highgrove House

For further details call Gill Ashley 840993 or visit [www.tetburyartsociety.org.uk](http://www.tetburyartsociety.org.uk)

## Events at Highgrove

**Courses at Highgrove Willow Workshop** - 4 Feb, 19 Mar £125

This all day interactive workshop will provide an introduction to the traditional craft of willow weaving. Willow weaver Helen Lomberg will demonstrate how to make a woven willow plant support using reeds gathered from the Estate and help you to create your own support to take home

**John Wonnacott Talk: Sketches of the Royal Family** 17 Feb £55 British painter John Wonnacott CBE has painted many members of the Royal Family. Examples of his work are on display in the Orchard Restaurant at Highgrove.

**Course: Introduction to Poultry Keeping** This all day educational talk will tell you everything you need to know about keeping poultry and is ideal for anyone just starting out. Andy Marshall from the British Poultry Club will discuss general housekeeping,



**New website?**

Mobile friendly, sales led and affordable.

Talk to our friendly team today.

**The Front Room**  
Marketing & Design

**01666 822 223**

**team@frontroommarketing.com**

**www.frontroommarketing.com**

Gable House, 46 High Street, Malmesbury, Wiltshire SN16 9AT



**Bishop Property**  
building services ltd  
Preserving the past, building the future

## Quality Building & Renovation

Stone Barns, Cottages, Extensions & New Build

All aspects of building projects undertaken



Please contact us to discuss your building requirements.

Tel: 01666 848108 or Mob: 07881828454

Our passion and expertise lie in renovating and converting stunning character buildings, whilst retaining their important characteristics. Delivering 21st century living expectations and desires, enabling our customers to realise the potential in their unique property.

[www.bishoppropertyltd.com](http://www.bishoppropertyltd.com)  
[keith.bp@btconnect.com](mailto:keith.bp@btconnect.com)

nutrition, popular breeds

25 Feb £75

**Course:** Jekka McVicar's Herbal Master Class A chance to experience the passion Jekka has for growing and using herbs and to learn some tricks of the trade she has picked up during her 30 years of horticultural experience. 03-Mar

For further details call 020 7766 7310 or visit [www.highbrovedgardens.com](http://www.highbrovedgardens.com)

## Grittleton Moviola - the Touring Rural Cinema Scheme

**What We Did On Our Holiday** [12A] Thur 19 Feb - NB till MAR 2015 Thursdays then back to Wednesdays from Apr For one night only - Grittleton Moviola will move to Grittleton House School - Many thanks to the School for helping us out while the hall is being refurbished.

**PRIDE** [15] Thurs 26 Mar Village Hall

**The Imitation Game** [12A] Wed 29 Apr

Doors open 7pm for 7.30pm start £6 from Lesley or on the door.

For further details call Lesley 01249 783157 or email [l\\_palmer@btinternet.com](mailto:l_palmer@btinternet.com) or visit <http://www.moviola.org/>

## Wotton-Under-Edge

### The Electric Picture House

A refurbished local cinema run by volunteers from the local community This month's Live screenings: Birdman; The Theory of Everything; The Imitation Game; Unbroken; RSC Live : Love's Labours Lost Wed 11 Feb; NT Live Encore Treasure Island 18 Feb; ENO Live: La Traviata 11 Mar b check website for details

Further details call 01453 844601 or visit [www.wottoneph.co.uk](http://www.wottoneph.co.uk)

## Cirencester

### North Wilts Villages Flower Club

**Annual Members Dinner** The Hare and Hounds, Westonbirt  
**Workshop** tutored by Sally Taylor Mar 18 7 for 7.30pm start As always visitors and new members are welcome  
Crudwell Village Hall/

For further details call Margaret on 01285 770 639

## Nailsworth

### Forest Green Rovers F.C.

Professional football only 20 minutes drive from Sherston. Home matches: Sat 7 Feb 3pm v. Grimsby Town; Sat 21 Feb 3pm vs. AFC Telford Utd; Sat 28 Feb 3pm Southport Adults £17/£13, Concessions £10/£8, under 16s £4 Adults £15/£13, Concessions £10/£8, under 16s £2 The New Lawn Forest Green Nailsworth

For further details call 01453 834860 or visit [www.forestgreenroversfc.com](http://www.forestgreenroversfc.com)

## Bath, Stroud, Bristol Covent Garden Royal Opera House and Ballet @ the cinema

Live and pre recorded screenings of opera and ballet from the ROH Covent Garden

Opera Live: Der fliegende Holländer starring Bryn Terfel 24-Feb

Ballet Live: Swan Lake 17-Mar

Opera Live: Rise and Fall of the City of Mahagonny 01-Apr

Stroud Apollo, Odeon Bath and many other Cinemas

Further details call 0871 220 6000 or visit [www.roh.org.uk/cinema](http://www.roh.org.uk/cinema)

## Bath, Stroud, Bristol, Wotton National Theatre Live

Live and pre recorded screenings

Live from the National theatre:

RSC: Love's Labours Lost - LIVE Wed 11 Feb

ENO: La Traviata LIVE Wed 11 Mar

NT Live: Behind the Beautiful Forever Thurs 12 Mar

For further visit [www.ntlive.com](http://www.ntlive.com)

## Bath

### Buy a Brick at the RUH

**Help build a new Cancer Centre** Every 'brick' purchased will help build an exceptional Cancer Centre that will transform Cancer Care at your local hospital. Donations of £100 + will be acknowledged within the new building design Buy a Brick' for £10, 'Raise a Row' for £100 or 'Build a Wall' £1000 - [www.foreverfriendsappeal.co.uk](http://www.foreverfriendsappeal.co.uk). If you are a UK taxpayer, please gift aid your donation on <https://www.justgiving.com/beabrick/>

Royal United Hospital Bath For further details call 01225 825691 or visit [www.foreverfriendsappeal.co.uk](http://www.foreverfriendsappeal.co.uk)

## Theatre Royal

**Roundelay** 2-7 Feb £15-£33.50

**Arcadia** 9-14 Feb

**Peter Pan Goes Wrong** 16-21 Feb

**Hairspray** 24-28 Feb

**Book ahead for:** Rebecca ; Oh What A Lovely War ; King Lear;

Joseph and the Amazing Technicolour Dreamcoat; Twelve Angry Men; A Mad World My Masters

For further details call 01225 448844 or

visit [www.theatreroyal.org.uk](http://www.theatreroyal.org.uk)

## Stroud

### The Cotswold Playhouse

**Red Dragonfly** present: **The Autumn of Han** 6 Feb 7.30pm A new adaptation of a Chinese classic for the European stage, an enthralling story of corruption, revenge and tragic love. Tickets £16 (£12 under 18)

**The Brontë Season** Butterfly Psyche Theatre and Livewire Theatre present Jane Eyre by Charlotte Brontë 11 Feb at 7.30pm.

**The Tenant** if Wildfell Hall by Anne Brontë 12 Feb at 7.30 pm.

**Wuthering Heights** by Emily Brontë 13 - 14 Feb at 7.30 pm

**The Cotswold Players** present **The Amazing and Preposterous**

**Constance Smedley** by Sherston playwright Frank Hatt 18 to 21 Mar at 7.30 pm

For further details call Box Office at Stroud Tourist Information Centre 01453 760960 or visit [www.cotswoldplayhouse.co.uk](http://www.cotswoldplayhouse.co.uk)

# Useful Numbers

BT fault line	0800 800151
CLARENCE (Highway complaints)	0800 232323
Cllr John Thomson	01666 840785
Malmesbury Activity Zone	01666 822533
Malmesbury Library	01666 823611
Malmesbury Police 101	(emergency 999)
Malmesbury Primary Care Centre	01666 825825
Malmesbury Secondary School	01666 829700
Malmesbury Youth Centre	0799 0908550
MP James Gray	01249 652851
NHS Direct	0845 4647
Sherston Parish Council	01666 840197
Sherston Post Office	01666 840456
Sherston School	01666 840237
Sherston Village Hall (bookings)	01666 841377
Tolsey Surgery	01666 840270
Wiltshire Council	0300 4560100