



Sherston Neighbourhood Plan

After five years of effort, and a considerable amount of consultation, the Steering Group is at long last making ready to progress the Sherston Neighbourhood Plan.

It is anticipated that in the next few weeks the following final steps in the process will start:

Stage 1: The Consultation Stage

The Neighbourhood Planning Regulations require the draft plan proposal to be the subject of a six-week consultation before it is submitted to the local authority for independent examination. This stage of the process will be started in the next couple of weeks.

Stage 2: Modifications Stage

Any comments received by the Steering Group by the end of the consultation period have to be fully considered and a decision made over whether or not to amend the neighbourhood plan. A brief report will be produced, summarising all of the comments received and any modifications made.

Stage 3: Submission of the plan to the local planning authority

The draft neighbourhood plan proposal is then formally submitted to Wiltshire Council who are responsible for publicising the plan, arranging for the independent examination and a referendum to take place.

The plan must be publicised for a further six-week period. Any representations made at this stage are passed to an independent examiner and will only be considered within the context of the independent examination (see below).

Stage 4: The independent examination

The local authority has to appoint an appropriately qualified and experienced person to carry out an independent examination of the neighbourhood plan. The local authority will send a copy of the plan and all of the supporting information together with a copy of any comments received during the publicity period to the independent examiner. Normally, the independent examination will be conducted by written representations. However, if it is considered necessary, the examiner may invite interested parties to a public hearing to present their comments. This might be necessary to examine an issue in more depth or to ensure fairness. The independent examiner will only consider whether the proposed neighbourhood plan meets the basic conditions and other requirements set out by law. They are not permitted to explore other considerations. The examiner will be considering whether the plan:

- has appropriate regard to national policy
- contributes to the achievement of sustainable development

- is in general conformity with the strategic policies in the development plan for the local area
- is compatible with EU obligations
- meets human rights requirements.

Following the examination, the examiner will issue a report to the local authority and the neighbourhood planning body. If the plan meets the basic conditions, the examiner will recommend that the plan proceed to the referendum stage. They may suggest modifications that are needed to be made to the plan, to ensure that it meets the basic conditions, before it can proceed to the referendum. It is the responsibility of the local authority to make such modifications.

The examiner may conclude that the plan does not meet the basic conditions and that modification to make it meet the basic conditions is not possible. In that situation the examiner would recommend that the plan does not proceed to the referendum.

Stage 5: Referendum

If the neighbourhood plan is found to be satisfactory then the local authority will arrange for the referendum to take place.

Every effort will be made to ensure that everyone in the Parish knows when this process starts, where to see all of the relevant documents, and how to make comments on the draft plan. It is intended that there will be a number of 'drop in' sessions held in the Village Hall during the Stage One six week consultation period – when members of the Steering Group will be in attendance to answer any questions and help clarify exactly what is being proposed.

We thought that it might be helpful in the meantime to provide everyone in the village – at least those of you who read the Cliffhanger – with a complete set of the draft Policies proposed to be incorporated in the draft plan. These are set out for you elsewhere in the Cliffhanger.

All of these policies and proposals have been the subject of discussion and debate over a number of years. For those who have had a continuing interest in the emerging plan there should be no great surprises as very little has changed. The one exception being the proposed mechanism for securing delivery of the new GP surgery – which has been the subject of considerable debate over the last 12 months.

As noted above, anyone and everyone who is interested in the emerging plan will have an opportunity over the coming months to discuss and comment on each of these proposed policies before the plan is finalised. We look forward to discussing them with you.

Further details of what is to be included in the plan on pages 16 to 18.

Road Closure

Wiltshire Council has made an Order to close temporarily to all traffic: C1 (Part) Norton Road / Hullavington Road, Hullavington and Norton; from its junction with The Street to its junction with Sherston Road. This is to enable Eurovia to undertake works for carriageway resurfacing, surface dressing and road markings.

Alternative route: via Sherston Road – C86 Fosse Way / Alderton Road (Grittleton) – C72 The Street – C33 Grittleton Road / The Street (Hullavington) and vice versa. The closure and diversion route will be clearly indicated by traffic signs.

This Order will come into operation on 14 February and it is anticipated that the closure will be required until 16 February. Access will be maintained for residents and businesses where possible, although delays are likely due to the nature of the works.

Copy deadline: 10th of the previous month.
Send to editorial@sherstoncliffhanger.co.uk
or hard copy to Sherston Post Office Stores.

What's On: contact Caroline Moore on 841405 or info@sherstoncliffhanger.co.uk

The size and content of the Cliffhanger depends entirely on the amount of copy we receive from individuals and groups. So, if you feel you have something of interest, please don't hesitate to tell us. Around 400 words would be a maximum but the shorter the better and less editing would be needed.

Top tip: if you're telling us of an event coming up, write a short piece about it rather than just supply basic details or a poster. You will then get a short article published to help boost interest as well as a mention in our What's On section. Don't forget to tell us how your event went, with a photo if possible.

To advertise, contact:

Tahiti van Rooyen
advertising@sherstoncliffhanger.co.uk

Advertising rates:

for 12 months:

1/4 page £220; 1/8 page £110; and 1/16 page £55

for one month:

1/4 page £88; 1/8 page £44; and 1/16 page £22

Inserted leaflet drop £85 max size A5

Whilst every effort has been made to ensure the accuracy of advertisements contained in this publication, Cliffhanger cannot accept any liability for errors and omissions. Inclusion of an advert should not be taken as an endorsement by Sherston Parish Council.

Please remember the Cliffhanger is delivered free to every home and business in the parish – more than 1000 copies. This and all previous editions are also available online at www.sherston.org.uk

PRINTED BY THE COMPLETE PRODUCT COMPANY, PINKNEY

The Legendary 'Sherston Skank Off' is Back: Saturday 24 February



Saturday 24 February at The Old Rifle Range in Sherston (ok, ok the Village Hall!) is the place to be folks!

So, cutting to the chase (for those with a limited attention span), here are the headlines:

Two fantastic live bands, guest DJ with an old skool vinyl set, fantastic food included in the price, Big Tony's Jumpin' Gin Joint bar, all profits to the Village Hall Fund, tickets are a measly £15 from the Post Office!

And for those who like the detai ...

The headline band are The Tribe – now you could have paid hundreds of pounds to see them at Glastonbury, Boomtown and Bestival festivals last summer - or you could pop down to the Village Hall on 24 February - they manage that tricky task of being über cool and being fun at the same time:

'... they blend hip hop drum grooves with smooth bass lines and classic offbeat reggae guitar skanks. Vocally they execute sweet and soulful pop which provide the perfect counterpoint to staccato rap verses...' Time Out

'... a master class in accessible, enthralling music and stagecraft....' Wired

The support band is The Arkansaw Jukebox Collective who you might remember from last summer's baby Boondocks and are 'the best fun you can have with your clothes on' according to, er... (well, actually according to the band themselves!). With their set of bonkers bluegrass covers of everything from Stormzy (yes, really!) to Little Mix, you kinda have to see it to believe it...

Add in a DJ set by those vinyl junkies 'DJs Crackle and Pop', food from the Sherston Chilli Smokehouse and a swift one from Big Tony's Jumpin' Gin Joint and good times are guaranteed!

Tickets (including food) are just £15 from the post office or you can get them online at www.tribe-sherston.eventbrite.co.uk

(Remember all profits from Brush Up The Bogs events go to the Sherston Village Hall refurbishment fund - so you get a great night and do good things ... win-win!)

Sherston 1016 Booksale

We are holding our next popular book sale in Sherston Village Hall on Saturday 10 February from 9.00 am to 12.00noon – free entry. It's always a great village occasion and a good chance for a natter amongst friends and neighbours.

Our books are very reasonably priced with 99% being only 25p each or 5 for £1. We always have a massive selection including a children's section, DVDs and CDs are £1 each.

If you have any books, CDs or DVDs to donate these may be left with Mike Tarrant at Grays of Sherston.

All proceeds to go to The Village Hall renovation fund and the Wiltshire Air Ambulance.

Traffic Regulation Order

Wiltshire Council. Road Traffic Regulation Act 1984. Traffic Management Act 2004. The County of Wiltshire (Parishes of North Wiltshire) (Prohibition and Restriction of Waiting, Taxi Rank Clearways and On Street Parking) Consolidation Order 2018 (Previously advertised as 2017)

Notice is hereby given that on 16 January 2018 Wiltshire Council made the above mentioned Order under the Road Traffic Regulation Act 1984 ('the Act of 1984') and the Traffic Management Act 2004 to revoke The County of Wiltshire (Parishes in the District of North Wiltshire) (Prohibition and Restriction of Waiting, On Street Parking and Clearways) Consolidation Order 2006 with amendments 1, 2, 3, 4, 5, 6, 7 and 9 and re-enact it in the above Order and to include additional restrictions as follows:

Sherston

To introduce No Waiting at any time on the following lengths of roads:

Cliff Road – east side – from a point 160 metres south of its junction with Court Street for a distance of 15 metres in a southerly direction

Noble Street – south side – from its junction with Church Street for a distance of 12 metres in a south easterly direction

Silver Street – north side – from its junction with Cliff Road for a distance of 13 metres in an easterly direction

Sherstonians ...

Are you new to the village or have you lived here a long time?

If the answer is YES to either of those questions, then you will know that the key meeting venue/activities space/party venue in Sherston is The Old Rifle Range / The Village Hall. You will also know that it is in great need of renovation and modernisation. We are looking for fun-loving /idea-flowing / forward-thinking people to join our Fundraising Team to raise money for this momentous project. If you are one of those people, please call the Chairman of the Fundraising Group, Adrian Cooper, on 840969 and get involved TODAY.

Sherston Senior Club

Having enjoyed a delightful lunch at the Old Royal Ship in December, we had our first meeting for 2018 on 9 January. This was our AGM and we were pleased that 27 members and visitors attended in spite of a very damp cold day. After the AGM, members were given a very interesting talk by Sue Morris of Westonbirt. Sue described how she had found artefacts dating back to 4,000BC on their land. Lots of Roman finds and flint arrow heads were on display. Members were very intrigued and asked lots of questions. Thank you, Sue, for a very interesting talk.

We were pleased to welcome four new members. Membership is £15.00 per year and includes some subsidised events. We meet every two weeks in the British School Room, Cliff Road, at 2.00pm in the winter and 2.30pm in the summer. We have speakers who talk on a variety of subjects and or activities and several coach trips per year. Of course we always have tea and biscuits and time to catch up with each other. We are a friendly club with age no barrier, come along and see what we get up to, visitors £2.00 per visit.

Following 'Keep Fit' with Laraine on 23 January, our next meeting is on Tuesday 6 February, where our speaker Danielle Mills will be telling us all about Medical Detection Dogs. We hope to see you soon.

Rattlebone thanks!

The 2017 Christmas Party at the Rattlebone was a great success. It was standing-room only for the evening of 21st December, with the carol singing accompanied in fine form by the Dodington Parish Band.

A magnificent total of £506.10 was raised by the raffle. Thanks to all businesses who donated prizes, and to all who bought a square on the big raffle board.

The proceeds will be divided between Sherston 1016 and the Friends of Sherston School.

Many thanks to Jason and all the staff at the Rattlebone for all their hard work, and for the delicious refreshments.

Tolsey News

Judy Sharp



Online Access

Wouldn't it be great if you could look at your GP records online? Well, you can! You can go online and see information in your GP record, including your medications, allergies, test results, immunisations and illnesses. You can also book and cancel appointments and order repeat prescriptions online.

Just like online banking, you can look at your GP records on a computer, a tablet or a smartphone, using a website or an app. If you would like to start using online services, see the 'Getting started with GP online services' guide for more information. This guide is also available online at nhs.uk/GPonlineservices. Or contact the surgery.

In order to activate your online services, we will ask you to complete a form and bring in photo ID and proof of address, such as a utility bill. If you don't have any ID, don't worry, we can find other ways to confirm your identity.

Many of our patients already benefit from our online services and we would like to extend this to as many patients as possible.

New Appointment System

We are now well into our trial of the new appointment system, and we are pleased with the way it is going and we feel that it is helping us get through this very busy time. We started by trialling the new clinics on Mondays and Fridays and we are now running the same system every day. Our doctors have spoken to many patients requesting urgent appointments and the majority have not needed to come in on the day. Frequently, queries have been dealt with over the phone, or the patient has been booked in to see a doctor within a few days.

We would ask for your continued cooperation in giving our receptionist as much information as you can to give to the doctor. It is also vitally important

that you ensure we have the correct telephone number for you. If using a mobile phone, ensure that you have a strong signal, and stay close to the phone.

Diabetes Prevention Programme

Every two minutes someone finds out that they have Type 2 diabetes. There is no cure for this chronic medical condition, which can lead to major health problems such as heart disease, blindness and even amputations.

The Tolsey Surgery has been invited to take part in a National Diabetes Prevention Programme (NDPP). The NDPP is a new evidence-based lifestyle programme commissioned and paid for by NHS England (working with Public Health England and Diabetes UK) consisting of 18 group-based sessions over nine months to help people make changes to their lifestyle to lose weight, eat a healthier diet and increase their physical activity levels.

Patients who receive an invitation to join this programme may not be aware that they are in a risk group for Type 2 Diabetes, but they may have had a recent blood test that shows increased blood sugar levels which could lead to diabetes in the future.

The reason we agreed to take part in this initiative is that it is really important that patients understand the possible risks, and they are being given the opportunity to access free advice to help reduce these risks before they become a reality. We would encourage any patients invited to take part in this programme to consider joining.

Sherston Market

Sherston Market Starts again on Saturday 10 March in the Village Hall from 10.00am to 4.00pm. We have lots of stalls, including many new ones, as well as our usual friendly faces. This market will be just in time for Mother's Day and Easter and our stallholders I'm sure will have been busy making special bespoke gifts to sell at very affordable prices, so save your pennies.

This year we are holding a market on the second Saturday of each month starting in March, but not July as that will be Boules Weekend. We are hoping for your continued support, please remember it is all in aid of the renovation of the Village Hall, which is a big part of our community.

Look forward to seeing you all there!

Small Ads

You can now advertise items for sale or wanted in the Cliffhanger including services required such as gardening or cleaning. Cost is £2 for up to 20 words. Copy should be in paper form and put through the letterbox at 37 High Street by the 15th of the month together with £2 in cash.

All monies raised will be donated to charity. Private advertisers only please – no businesses.



Shear Class & Serenity

Uni-Sex Hair Salon and Beauty Salon
Sherston 01666 840840



Tuesdays - Saturdays
Late Opening and Reduced Rates for
Senior Citizens on Thursdays

For all your Hair & Beauty
Treatments
Appointments not always necessary
please call in

MATRIX

BIOLAGE

WI Report

Our members enjoyed a New Year Lunch at the Old Royal Ship in Luckington early in January which gave us a chance to catch up with each other after the Christmas festivities and to look forward to 2018.

Our next meeting is on 1 February. This will be our Annual General Meeting when we will be able to reflect on the year that has just finished, look forward to the coming year and elect our committee members and officers for 2018. As well as the necessary formalities, we will be having a quiz. An ideal opportunity for visitors and new members to come and meet old friends, make new friends and test their knowledge. Rupert Evelyn, Wales and West of England Correspondent for ITV News, will be giving a talk at our March meeting on 1 March.

On Thursday 19 April, everyone is welcome to our Open Meeting when Caroline Lowsley-Williams, whose family have lived at Chavenage Hall since the late 19th Century, will be giving a talk. Chavenage has played a notable part in a number of film and television productions, the Poldark series being one of the more recent ones. So, make a note of the date in your diary and book your seats to be sure of your place. Cost is £8.00, which will include refreshments. Please contact Jill Woodward (840578 or jillwoodward222@btinternet.com) or Sue Heathcock (829344 or thegardenhouse@btopenworld.com).

Finally, we were very pleased to be able to give Julia's House Children's Hospice a cheque for £105 (50% of the funds raised from the sale of mugs at the recent village markets). We also donated the remaining mugs to them for their future fundraising events.

Traditionally finished **COTSWOLD STONE**
*of the very finest quality
direct from our quarry*



**Walling Stone •
Building Stone •
Roofing Tiles •
Garden Stone •**

Tel: **01666 840443**
Fax: **01666 840191**

www.knockdownstone.co.uk
Knockdown Stone,
Halfway Bush Farm, Knockdown,
Tetbury, Gloucestershire GL8 8QY

SHERSTON ||| DRAMA ||| GROUP

Secondary Cause of Death

In 2001 and 2007, we performed Peter Gordon's comedies *Murdered to Death* and *Death by Fatal Murder*, featuring the inept detective Inspector Pratt. This year we are tackling the third play in the Inspector Pratt trilogy: *Secondary Cause of Death*. It is just as funny as the other two, as the hapless inspector tries to make sense of events at Bagshot House in the months leading up to World War 2. Can the audience guess the identity of the murderer, or indeed the next victim, before Pratt does? It would seem very likely. Please note the dates in your diary: Wednesday 4 to Saturday 7 April in Sherston Village Hall at 7.30pm. Tickets will be on sale from the beginning of March. More details next month!



Allington Bar Farm,
Chippenham, SN14 6LJ
Tel: 01249 658112

Open 7 days 9am – 6pm
Mon – Sat
& 10am – 5pm on Sundays.

Quality Local Produce

Home produced Pork, Lamb, Beef & Goat
Home Made Sausages & Burgers
Local Free Range Poultry
All available daily from our Butchery

Locally made Preserves, Chutneys & Pickles

Somerset Jersey Organic Milk & Cream
Local Cheeses & Home Cooked Meats
Extensive range of local Ice Cream

Locally Grown Fresh Fruit & Vegetables
Homemade Cakes & Pies
and many more local ingredients

WE WILL REMEMBER THEM



Driver 226945

James Ponting

23 Div Ammunition Column Royal Field Artillery

Who died Saturday 2nd February 1918 aged 23

Son of Albert and Matilda Ponting, Sherston

Remembered with Honour,

Ste Marie Cemetery, Le Havre, Seine-Maritime, France

A Soldier's Death

Mr Albert Ponting, of High Street Sherston, has received the sad news from an official source that his youngest son, James Ponting, has died in hospital in France. He was 23 years of age.

When war broke out he was one of the first in 1914 to enrol in the village schoolroom as being willing to enlist but he was rejected no fewer than five times. Undaunted, he went to Chippenham and begged to be allowed to join up. Ultimately he was accepted and now he has made the great sacrifice.

The family has had many letters of sympathy, including one from the matron of the hospital, who wrote:

'He was not long in hospital here but we all got so fond of him and he seemed so happy and so friendly with everyone and did so many little things to help and cheer everyone around him. He was such a good fellow.

I know your sorrow will be very great but you have the great comfort of knowing that he was just doing his best to serve his country and fight for the right and in that service he has been called to greater things.'

Mr Ponting has another son, Sergeant A Ponting, who has recently won a medal in Salonika where he has been serving for two years.

North Wilts Herald, 15 February 1918.

The bells of Holy Cross Church were rung at 11.45am on 2 February.

Do you want to know
**YOUR
FAMILY HISTORY**

Skeletons in the cupboard,
convicts, statesmen, rich
man, poor man,
beggar man, thief?
We all have them and they
are hiding there waiting to
be found.

Let me find them for you.

Beryl Clampton

Call anytime: 01666 841201
or 07850 623517
e-mail: beryl@clampton.com

C.J. GOUGH

**PAINTER &
DECORATOR**

**41 The Tartars,
Sherston,
Malmesbury,
Wiltshire
SN16 0NT**

**Telephone:
01666 841003**

Team chasing returns to Sherston!

Sunday 18 March heralds the return of the Beaufort team chase after a 35-year absence. Run over Manor farm and nearby Sandy farm, the course will incorporate timber, walls, hedges and natural obstacles and will be a thrilling adrenaline rush for those wishing to ride, and for those on foot, an exhilarating spectacle!

We will have various trade stands, a licensed bar and food available throughout the day - it promises to be a great day out for all the family.

Starting at 9.00am, we will have four classes running throughout the day, with a Hunter trial/pairs class over the novice course, a Novice team chase and an Intermediate speed and bogey class. For those wishing to ride, entries will be via horse-events and will be available soon. Please note that the footpath across the farm (Sherston-Luckington) will be affected by the event as will the byway at the back of Manor farm so we ask that anyone using the farm that day to keep their dogs on a lead at all times.

We will have various marshalls over the course and at the byway crossing for added safety. We will also be putting up posters nearer the date on all access points as a reminder of the event.

For more information, visit www.beaufortteamchase.co.uk, the Beaufort Team Chase Facebook page or email: lottiebostock@gmail.com

McGILLS
Malmesbury

Chartered Accountants

At McGills we are committed to providing a high quality, straightforward, no-nonsense service, aimed at saving you time, money and tax.

We work hard to meet the highest standards and we treat every client with care and professionalism in order to deliver on our promise.

Tel: 01666 823201



Great partnerships start here...



www.mcgills.co.uk



McGills Malmesbury, 1st Floor The Barn,
Cross Hayes, Malmesbury SN16 9BE

Come and enjoy the pancake fun on Shrove Tuesday!

For those who aren't aware, Sherston has its own way of marking Shrove Tuesday and the beginning of Lent.

Instead of running down the street with frying pans, we just race to eat a plateful of delicious pancakes prepared by the chefs at the Rattlebone.

This year's event takes place on the evening of Shrove Tuesday, February 13, from 7.30pm at the Rattlebone.

The competition will take place in heats, with each competitor paying a £2 entry fee for the whole evening. Each entrant will have four delicious freshly-cooked pancakes to eat in the first heat. Entrants will have time to add lemon and sugar to their taste, then the clock will start, and the first heat will be under way.

The winner of each heat will be the first to finish eating all the pancakes on their plate.

This is a really popular family event, with special heats for younger competitors, with fewer pancakes involved. It's a very family-friendly event, especially as it takes place in the school holiday this year.

These winners will then go on to the next heat, again with four pancakes each, and so on until the championship round.

The winner will have their name engraved on a Sherston 1016 commemorative engraved frying pan!

Entries are welcomed on the night: there's no need to book.

Where possible, all ingredients are sourced locally, with eggs coming from Sherston Free Range Eggs and flour from Shipton Mill at Long Newton. Both companies very kindly donate their products for the competition. All money raised goes to local good causes.

Sherston 1016 strongly advises all entrants not to eat a meal before coming to the competition!

Thanks go to Jason, Harry, Roger and the Rattlebone staff for all their help with the event.

Watercolour and Acrylic Workshops

www.briansmithartist.com

Brian Smith professional artist
Small groups (maximum 5 students)
2 or 3 hour sessions weekly
All abilities welcome
Studio based at Pinkney Park, Sherston
Contact Brian: 07778623344 Email: briansmithartist@gmail.com

**ATWELL
MARTIN**
ESTATE AGENTS

Letting and managing properties in your area

For a free market appraisal,
call the lettings experts today
on 01666 828 944

@AMLettings_
AtwellMartinLettings

ARLA RICS



Friendly People, Lovely Homes

www.atwellmartin.co.uk

HELPING OUR
CUSTOMERS GET
THE MOST FROM
COUNTRY LIVING
FOR GENERATIONS



VISIT OUR
COUNTRY STORE

Open to the public and
trade customers

Animal Feeds
Animal Bedding
Gardening Equipment
Country Clothing
Footwear



T H WHITE
COUNTRY
STORE

Sherston Works
Knockdown
Tetbury Glos GL8 8QY
01454 238181
www.thwhite.co.uk



Church News

This is the first opportunity in print I've had to say a big 'thank you' to the host of volunteers who played such an important role during Advent, Christmas and the New Year. It was a thrilling and inspiring time, made possible by the labours of so many, to whom we're deeply grateful.

The Ash Wednesday services will be at 7.30 pm on 14 February in Sherston (with ashing) and at Stanton St Quintin. The following week our Lent Groups will begin, and we expect to host groups on Monday evenings 7.30pm-9.00pm at Swallow Barn, Stanton St Quintin, contact Ruth Williamson 838412; Tuesday afternoon in Sherston, contact David Miller (david.miller@methodist.org.uk); Wednesday lunchtime Lent Lunch with short study at 55 The Tarters Sherston, from 12.00noon – contact Susan Harvey on 840696 or Christopher Bryan on 837522; Wednesday evening in Luckington at Bridges Court, contact Christopher Bryan on 837522; and Thursday evening in Hullavington at Court House from 7.30 pm, contact Henny Metters on 837778.

We plan to produce a flyer to be given out in all our churches with details of the Holy Week services and other special events during Lent and Easter. In particular there will be special services changing the regular pattern on Mothering Sunday (11 March) and Easter Day (1 April). Please look out for this and take one – and perhaps another for a friend!

There will be a special discussion on 22 Feb in Holy Cross Sherston at 7.30pm to hear from one another and share ideas about how our churches might build on their strengths and address challenges. All most welcome, refreshments will be served from 7.00pm.

Every blessing

Christopher Bryan, Rector

Charming House to rent in historic Southern France

16 Rue Montmorency is a charming three-bedroom town house located in the heart of Pezenas, a beautiful medieval market town. The house can accommodate 6 people comfortably and was built in the 18th Century. Constructed from ancient stone (probably from the neighbouring castle ruins!) it comes complete with authentic touches such as decorative wrought iron railings and sky blue wooden shutters which are a decorative theme running through Pezenas.

Light and airy with stunning views

Number 16 is situated on the apex of a row of town houses, and so has light on three sides as well as a roof terrace with stunning views over the old town and Languedoc countryside. Rue Montmorency is a stone's throw from the bars and bistros of the vibrant old town.

Please see the website for more details www.realsouthoffrance.co.uk

Or call Jennie Lamont on 07985443863

Quote Cliffhanger on any enquiry

Introducing Boondocks Tribal Lands: Who will be in yours?



Registration for the all-new Boondocks Tribal Lands opens soon so get your tribe together and stake your claim to a little patch of Boondocks territory to call your own. Just go to theboondocksfestival.co.uk/tribes to set up your tribe – free!

You know how it is. You all want to camp together, but Geoff and Barbara can't get there 'til late and then someone plonks a tent in their spot (with their tent door facing yours – who does that?). Then Geoff and Barbs end up camping in a different postcode and it's all a bit of a stress.

Well, no more, dear friends, because this year at Boondocks you and your mates can have your very own special territory in the new 'Tribal Lands' camping area (and it's free).

How do I form a Tribe?

Just get at least 10 adults to join your Boondocks Tribe and we give you your own camping area. You get to pick your tribe's name (make it good – the best tribe name will get a superstar prize) and we'll even give you a tribe flag to stake out your territory and rally the troops round!

It's free, just register your tribe at theboondocksfestival.co.uk/tribes and tell us who is in it (note: all adults in your tribe will need Premium Camping tickets (so they all get access to the late-night bar too!) – you can get the tickets at theboondocksfestival.co.uk/tickets.

It's all getting a bit Tribal!

Big Love, Boondocks HQ

More info at theboondocksfestival.co.uk

McTimoney Chiropractic Tolsey Surgery, Sherston

A gentle & effective treatment for
back, neck & shoulder pain,
migraines, sports injuries & more

Emma Newby BSc MMCA

01666 841 402

www.mctimoneychiro.co.uk

MAN FOR ALL SEASONS

*WILL UNDERTAKE
ALL HOUSE/GARDEN
MAINTENANCE
NO JOB TOO SMALL*

From

CUTTING HEDGES,
WEEDING THE GARDEN
& CUTTING DOWN TREES

To

PAINTING & SMALL JOBS
IN THE HOUSE

*ALL MACHINERY PROVIDED
- LOG SPLITTER AVAILABLE*

01666 825463

Thank you Tucks.....

They may have sold their last salami but we haven't forgotten how good they tasted so please come and join us to say thank you to Andrew & Julie for the wonderful Tucks.

At 3.30pm on Saturday 17 Feb at The Angel Dave and the team have kindly agreed to share their space for a formal (ish) goodbye.

Many of you have already kindly donated to a thank you fund for Andrew's 3 decades of serving our community but many of you were unaware of our efforts in September. We got off to a great start and can hopefully add to that now that we have an official date in the diary.

If you would like to join-in and I hope that you can here are the details. There is a box labelled 'Tucks' behind the counter in Sherston Post Office where donations can be made in cash or cheques payable to R Evelyn marked 'Tucks' on the reverse.

Online. Barclays Bank. Account name - R Evelyn. sort code 20-05-06 account number 00062278. Please add reference 'Tucks'.

Parish Cllr Giles Robinson and Parish Clerk Donna Ford have agreed to provide oversight and verification of the process. We are using a personal and dormant account to ensure we don't incur charges from online fundraising sites which in turn will lead to whole amount of any donation reaching Andrew and Julie

All donations will be treated in confidence.

Please come and join us to say a fond farewell and thanks. Perhaps share a story about what Tucks meant to you. Surely we aren't the only people who weighed our baby on the scales!

For the Widest Range of Bedding,

Hanging Basket & Patio Plants in the Area

FOXLEY ROAD NURSERIES

Herbaceous Perennials & Alpines

Vegetable and Herb Plants

Foxley Road, Malmesbury

Tel: 822171 www.foxleyroadnurseries.co.uk



Andy Walden

Sherston, Malmesbury

**Fencing, hedge
cutting, clearance
& other work considered**



Fully insured

07810 136778

Sherston Magna Cricket Club: Diary Dates

Cricket Nets

If you've been following the Ashes and our performance has inspired you to improve your cricket skills then make a note of the SMCC Nets dates in your 2018 diary ...

Juniors: U9 and U11 2.00pm-3.00pm; U13 and U15 3.00pm-4.00pm.

18, 25 February : 4,11,18 March

Adults: 4.00pm-5.00pm.

4,18 February : 4, 18 March : 1 April

Venue: Westonbirt Sports Hall. More information will be on the SMCC website (www.sherstonmagnacc.co.uk)

AGM

This year's AGM will be held at 7.30pm on Tuesday 6 February at the Rattlebone. We would encourage all members to attend, as it is your chance to vote for your committee and let them know how you would like the club to be run for the upcoming season.

Hope to see lots of you there. SMCC

**IAN ASHBY
(SHERSTON)**

**Private hire
6 seat taxi**

**07875 844463
01666 841224**

Firewood

*Dry seasoned,
hardwood logs*

Barn stored

any size available

Also kindling sold in nets

Delivered to your door

For more details call Steve on

01454 232941 or

07974194012



HMH CONTRACTING LTD

General Builders

Tel 01666 841412

Email info@hmbhs.co.uk

- *Extensions
- *New Builds
- *Kitchens
- *Bathrooms
- *Listed Buildings and Renovations
- *Architectural Design and Planning Service

COMPLETE BUILDING SOLUTIONS FROM START TO FINISH

In Association with Partridge Architectural Services 07833433872
Email drawings@partridgehouse.co.uk



The late John Hillier



John and Anne Hillier enjoying themselves at a Country and Western night when John was in better health.

It is with great regret that we have to report the sad death of John Hillier. He passed away on 31 January, three days after his ninetieth birthday.

A well-known figure in the village, especially among older residents, John spent his entire life in Sherston and was still living in the house in which he was born in 1928.

After attending Sherston Primary School and Malmesbury Grammar School, John followed in his father's footsteps as a farmer, devoting himself to his herd of dairy cows, which he used to milk, single-handed, twice a day every day. Even after retiring and passing on the reins to the next generation, John continued to help on the farm and was still driving a tractor and assisting with the hay-making and harvest well into his 80s.

John was always active in village life. He was a founding member of the 'Over 25s' Club (now the Badminton Club), of which he was Chairman for many years. He had a long association with the church, as a worshipper, church warden, sidesman and part of the Parochial Church Council. His late sister, Kathleen, was church organist for a remarkable 60 years.

John was a long-serving member of Sherston Parish Council, and his extensive knowledge of local geography and history and wealth of experience often came to the fore during council meetings. He witnessed many changes over the years and was one of a dwindling number of villagers who remember Sherston when it constituted little more than the church, a couple of pubs and a collection of Cotswold stone cottages, before it expanded and developed to become the large, thriving place that it is today.

John was a countryman through and through but had a great interest in, and curiosity about, the wider world and has enjoyed exploring the UK and beyond. There can't be many people in the area who can say they had visited Iceland and Greenland and have been through the Panama Canal, as John had done.

John was married to Anne for almost 60 years. They had the four children – twins Sally and Richard, David and Jane – with six grandsons and one granddaughter.

We extend sincere condolences and heartfelt sympathy to the whole Hillier family at this sad time. At the time of going to press, it was too early to know of funeral arrangements. No doubt details will appear in the Post Office Stores when they are finalised.

Footnote: The Hillier family very kindly provide the field for Sherston's fireworks and bonfire each year. We all owe them a great debt of gratitude for hosting this community event year after year.

We're family when family can't be there



Driving
Miss Daisy

For further info
please contact
Helen on

07458 012 460

*10% discount
for first booking
in February

- * Your safe, friendly and reliable companion driving service.
- * We care about making every journey a pleasure and easy.
- * In Malmesbury and the surrounding villages for anyone unable to drive or feeling isolated but wishing to remain independent.
- * Appointments, trips, visits and more.
- * Up to 4 passengers.

www.drivingmissdaisy.co.uk

Lumley Garden & Pet Supplies

Stainsbridge Mill, Gloucester Road, Malmesbury, Wiltshire, SN16 0AJ

Tel: 01666 822325 E-mail: etlumley@googlemail.com

www.lumleypetsupplies.com



- * Top Leading Brands of Food & Treats
- * Our Own Label Premium Dog Food
- * Bowls, Toys & Accessories
- * Beds & Cushions
- * Wild Bird Food & Products inc. Live Food

" for you and your pet's every need. "

Delivery Service Available

Sherston Cubs Win Winter Olympic Bronze



On Saturday 20 January, Sherston Cub Scouts took part in the North Wiltshire District Scrapheap Challenge hosted by Neston Cub pack at their Memorial Hall. Using scrap from a mountain of cardboard, plastic and paper, the teams set about a competitive build on the theme of the Winter Olympics. The Sherston Cubs debated options and decided to create a bobsleigh track built around a mountain with cable car, spectator area and winners' podium. Following the half-time squash and chocolate biscuits, the finishing touches were made to the builds.

The nine other cub packs created models ranging from ice hockey arenas through ski slopes to a full-scale four-man bobsleigh. On the finishing whistle a representative from each Six described the features of the model to the judges who then scored the teams on enthusiasm, participation, teamwork and the final model.

Out of the ten packs, Sherston Cubs were ranked an impressive third, with a score of 35.2 out of 40 - only 0.6 points behind the winning team. Congratulations also go to the champion team from Crudwell - who will host next year's event.



SHERSTON CONGREGATIONAL CHURCH

In the British School Room, Cliff Road, Sherston

February Services

Sunday 4th February, 11.00 am - Revd Andrew Williams Tarling

Sunday 11th February, 11.00 am - Communion Service -
Revd Andrew Williams Tarling

Sunday 18th February, 11.00 am - Revd Andrew Williams Tarling

Sunday 25th February, 11.00 am - Alan Jenner

Christmas Day dinner at the British School Room



At 2.00pm on Christmas Day, Sherston Congregational Church served a most wonderful roast meal of turkey with all the trimmings, plus traditional puds, to 20 chattering, cracker-pulling, grinning, delighted, folk ranging from 9 to 93 years old!

Reverend Andrew Williams Tarling - with brave mum Carol and aided and abetted by Candi - refused to allow anyone else into their kitchen - then they did us all proud!

Everything was plentiful due to the generous donations of Sherston folk, ranging from wine, crackers, prizes, fruit crumbles, trifles, Christmas cake and fresh veg to nut roasts, cheese, biscuits and two huge turkeys!

Portions were especially large due to the sad fact that several attendees were suddenly hit by a local flu bug that particular weekend - but best wishes were continually conveyed by text.

The Queen's Speech was enjoyed on big screen, as was watching four-legged friends destroy the wrappings to get at their squeaking or edible pressies, plus seeing amusing prizes finish up in the wrong hands (eg hair clips to the hairless!).

Some met for the first time, others made new acquaintances, and several reminisced - a generally good time was had by all.

Due to the generosity of our locality, £100 has subsequently been sent to help the Homeless in Bristol via 'Loaves and Fishes' (run by Sisters of the Church) - gathered from those who benefited for several days afterwards from the festive leftovers.

Thank you Sherston and here's to 2018!

Sherston Congregational Church

Computer Problems?

Home or Business Support

We Come To You!

Fast Service, PC & Laptop Repairs, Virus Removal, Data Recovery
Wireless Networks, Broadband & Email Setup, Security and Parental Control,
Hardware and Software Sales. Microsoft Qualified, Local & Friendly.

Silverchart Systems Ltd

www.silverchart.co.uk

CALL US NOW!

01666 840531

office@silverchart.co.uk

Malmesbury League of Friends and Brighter Futures Radiotherapy Appeal

Brighter Futures Radiotherapy Appeal has reached £2 million of its £2.9 million target to build a new radiotherapy unit at Great Western Hospital (GWH) Swindon, helped by donations from The Malmesbury League of Friends (MLOF).

Over the last three years, MLOF has donated a total of £75,000, in three tranches of £25,000, to the Brighter Futures appeal, the last £25,000 being equally matched by the Greenham Common Trust, bringing the total to £100,000.

Brighter Futures Fundraising Manager Jane Leighton said: 'We are very proud and grateful for the support we have received from MLOF. We expect construction of the new unit to begin in the New Year, with a target opening date of spring 2019.'

MLOF chairman David Hide said: 'We are delighted to have supported this very successful campaign. Many local residents in the Malmesbury area, who need radiotherapy treatment will soon be able to receive this in Swindon, rather than having to endure the stressful and time-consuming journey to Oxford, where traffic congestion and parking are very difficult.'

Feel anxious about your size & want to fit into your nice clothes again?

Confused about all the conflicting Health & Fitness advice?

Call Christina or message "YES" to 07549 935831 & claim your **FREE** "How to get Healthier & become fitter" consultation.

I help you decide what kind/type of exercise to do, whether you need nutritional advice or not & how to fit these things in your life

"I help people move, eat, look & feel better through Physical Fitness, Nutrition & Coaching"



Facebook: C.C. Fitness
christinacroftfitness.co.uk

ccfitness4u@gmail.com
Offer ends 28-02-2018



The Baraka Catering Company Ltd.
www.barakacatering.co.uk



Catering for ALL events large & small
Delicious Homemade Canapés
Supper Parties
Gourmet Barbeques
Weddings, Birthdays & Christenings

Please don't hesitate to call Camilla on 07734 251 075
Or email camilla@barakacatering.co.uk
with any orders, questions etc.

Moviola @ Grittleton Village Hall

Wednesday 28 February

Goodbye Christopher Robin [PG]

A rare glimpse into the relationship between beloved children's author A. A. Milne (Domhnall Gleeson) and his son Christopher Robin (Will Tilston, Alex Lawther), whose toys inspired the magical world of Winnie the Pooh. Along with his mother Daphne (Margot Robbie), and his nanny Olive (Kelly Macdonald), Christopher Robin and his family are swept up in the international success of the books; the enchanting tales bringing hope and comfort to England after the First World War. But with the eyes of the world on Christopher Robin, what will the cost be to the family? film produced by Fox Light Pictures. Despite the PG classification, this is not a children's film. Rather in the manner of Saving Mr Banks, it explores some quite dark themes.

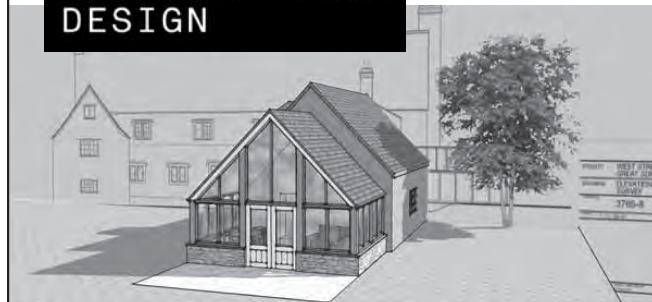
Tickets £6 adults from Lesley on 01249 783157 or email l_palmer@btinternet.com [underscore between l and p] Doors open 7.00pm, programme starts at 7.30pm

Future dates for your 2018 diary

Wednesday 21 March: Breathe

Wednesday 25 April: Murder on the Orient Express

**SKETCHUP
ARCHITECTURAL
DESIGN**



**3D CAD Models and
2D Drawings**



- Design and Visualisation
- Planning Applications
- Building Regulation Drawings

For a free initial consultation contact:

info@sketchuparchitecturaldesign.com

07814 685 519

www.sketchuparchitecturaldesign.com

Pinkney Park. Malmesbury. Wiltshire

Malmesbury parking charges to increase

Wiltshire Council is increasing the parking charges at Cross Hayes, Malmesbury from:

£0.50 to £0.60 for up to 1 hour; and

£1.30 to £1.50 for 2hrs.

A Little Love Cabaret

Rural Arts Wiltshire with Grittleton Village Hall presents this fun-filled cabaret by Spiltmilk Dance on Saturday 14 April at 8.00pm (doors open 7.30pm).

'A scrapbook of real-life love stories collected from across the country...ultimate heartthrobs, full-on obsessions and awkward mixed up emotions combine in a heart-warming...cabaret reminding us of the lengths we will go to for love...'

Described as 'Stupendously mad fun' and 'Sheer unserious delight'.

Tickets from Jan 01249 782798 dandijeffcoate@btinternet.co.uk

Adults £8, Concessions £7, Children (under 16) £5, Family (2 adults/2 children £21)

Age recommendation 12+

Bring your own refreshments



lacockphotography.com

capture magic

Lacock Photography



TALLY HO TRAILERS

Horse Trailers

New and Used
Sales - Service - Repairs
Van Fautras - Cheval Liberté
- Ifor Williams

www.tallyhotrailer.co.uk
tel: 01666 841149
or 01452 814152

STANTON COMPUTER SERVICES

We come to you!

PC repairs

Upgrades

Installation of new hardware

Wired and wireless networking

Internet and email set up and coaching

Virus cleansing

Please call Nick Greene on 01666 837850

Mobile 07887 721396

Email: nick@computerfixer.org.uk



Luckington Pre-School

Established for over 30 years

"a warm, unique and nurturing setting"

Weekly Forest School sessions

- Caring, enthusiastic and committed staff
- Montessori inspired environment
- Operates within Luckington Community Primary School grounds

WANT TO FIND OUT MORE?
Come and visit us
01666 840028
chair@luckingtonpreschool.org.uk
www.luckingtonpreschool.org.uk

Monday to Friday
9:00 - 13:00
Term Time Only
2 1/2 to 5 year olds

lucy tom

HANDMADE CURTAINS, BLINDS AND HOME FURNISHING ACCESSORIES

We specialise in handmade curtains, blinds and interior accessories. A personal service is offered with home visits and free quotations.

We have a wide range of fabrics and wallpapers available to suit all budgets.

Curtains, roman blinds, cushions, throws, loose covers, headboards, curtain poles, tracks and anything else required.

Mobile: 07813 877509 **Workshop:** 01666 238925
Email: lucytominteriors@gmail.com

Sherston Auto Services

01666 840522

Unit 1, Lordswood Farm, Sherston, Malmesbury SN16 0JZ

Servicing & repairs

**Tyre fitting
& wheel balancing**

**Diagnostic
& service indicator reset**

all at competitive rates

FREE COLLECTION & DELIVERY
IN THE SHERSTON AREA

Courtesy cars available

All major credit cards accepted



**M.O.T
Test Centre**

Member of the Ford Blue Oval Club
Genuine Ford parts fitted

SHERSTON DOG GROOMING

SHERSTON, MALMESBURY, WILTS SN16 0NJ

- Fully Qualified to City and Guilds level 3 with Distinctions
 - Full hydraulic dog bath and table
 - Full groom/clip prices from £25
- Full groom/wash prices from £10 • Clip nails £5
 - Situated on site with Pyke Boarding Kennels
 - Please call for appointment

Rachel Stanley

01666 840386

M 07557 654880

www.sherstondoggrooming.co.uk

Facebook: Sherston Dog Grooming



Easy to follow yoga classes.
Contact Jackie for more details.



**Grittleton
Village Hall**

**Monday
mornings**

**Thursday
evenings**



07947 342694 jadyble@gmail.com



Optimum Mobility



Also walking aids, bathing & household aids

The Old Dairy, Pinkney Park, Near Sherston

01666 840060

www.OptimumMobility.co.uk

Foxley Plumbing & Heating

Oil Boiler Installation, Servicing and Repairs
Oil Tank Replacement
Heating Installation and Repairs
Bathroom Installations
Unvented Cylinder Systems
No Job Too Small

Tim Hibbard

Malmesbury (01666) 822863

Mobile 07966 462202

Email foxleyph@btinternet.com



Bailey Cars



Your new local private hire service

- Local journeys
- Airport transfers
- Weddings
- Business travel
- Cotswold tours
- Nights out

Choose from a spacious 7 seater MPV to the **comfort** of a 7 Series BMW. We provide **reliable** rates and our drivers will ensure your **safety** on every journey

Book Now: 07500 416 416

www.baileycars.co.uk

0410317



Affordable, Quality Double Glazing

We provide an affordable and quality double glazing service that you can rely on.

- Windows
- Doors
- Replacement Glass
- Repairs and Replacements
- PVCu, Aluminium and Composite Products



Tel: 01666 840 042 Mob: 07720 717 902
www.sharpeswindowsanddoors.co.uk

**FIRST
CLASS
FREE**

PULSE4LIFE CLASSES

FRESH AIR FITNESS 0900
YOGA 1030
PILATES 1215
FRIDAYS IN SHERSTON
REC & VILLAGE HALL

WITH STUART DUNN

pulse4life.co.uk 07986 003602

PAWS FOR THOUGHT

PROFESSIONAL DOG WALKING AND MINDING SERVICE

- Bespoke service for you & your dog
- Knowledgeable in canine first aid, training and obedience
- Experience in handling both large & small dogs
- Group or individual walks available
- Fully insured in all aspects of dog care
- Established & recommended for 6 years

Animal Minding Service also available for cats & domestic pets. Animals are happier & more secure in their own environment. Daily visits provided to include feeding, grooming, tlc & medication if required

Please call Sophie Francis on 01666 840538

or 07531 057016

References available on request



**Private physiotherapy
clinics at Sherston
and Malmesbury
doctor's surgeries
with no waiting list**

**Experienced in the diagnosis
and treatment of:**

- All aches and pains, back, neck and joint problems
- Knee and hip replacement
- Shoulder rehabilitation
- Sports injuries
- Hydrotherapy (Nr Chippenham)
- Children, teenage and adult posture

Advice as to whether you need an MRI, XRay or consultant referral. Recognised by all major insurance companies. No GP referral needed for self funding patients

For an appointment please call:
01249 730 132

SHERSTON LACOCK CORSHAM MALMESBURY CHIPPENHAM

Sherston Neighbourhood Plan

As mentioned on page 1 it is anticipated that the draft Neighbourhood plan (and all related documents) will be published in the next few weeks. When published the Draft Neighbourhood Plan will deal with the following six specific key issues – which have been identified following a lengthy period of widespread consultation and debate.

1. **The protection of a wide range of existing community services and facilities and business premises;**
2. **The protection of certain specific identified open spaces and open areas in and around the village;**
3. **Securing the delivery of good quality high speed broadband throughout the plan area;**
4. **Allocating sufficient land to meet the future housing and community needs of the village;**
5. **Seeking to secure safe and inclusive access between the proposed new GP surgery, the Primary School and the village centre;**
6. **The protection and enhancement of existing sports facilities in and around the village.**

The following eleven policies are proposed to be incorporated in the draft plan to meet these various requirements. For those of you who have followed the progress of the emerging plan over the last few years there will be no great surprises as very little has changed.

Anyone and everyone who is interested in the emerging plan will have an opportunity over the coming months to discuss and comment on each of these proposed policies before the plan is finalised. We look forward to discussing them with you.

Full list of Policies proposed to be incorporated in the draft Neighbourhood Plan:

POLICY 1

Proposals involving the loss of the following community services, facilities or business premises will only be supported where it can be demonstrated that the site/ building is no longer viable for an alternative community/business use. Preference will be given to retaining the existing use in the first instance, then for an alternative community or business use. Where this is not possible, a mixed use, which still retains a substantial portion of the community facility/service or business use, will be supported. Redevelopment for non-community service/ facility or business use will only be permitted as a last resort and where all other options have been exhausted. In order for such proposals to be supported, a comprehensive marketing plan will need to be undertaken and the details submitted with any planning application.

Facilities/premises to be protected:

- A. Village Hall
- B. Scout Hut
- C. British School Rooms
- D. The Methodist Chapel
- E. Carpenters Arms PH
- F. The Rattlebone PH
- G. The Angel (restaurant and offices)
- H. Greys Garage
- I. The Old School (shops and offices)
- J. Tucks
- K. The Tolsey Surgery
- L. Apples and Pears
- M. The Wine Shop
- N. Stretchline premises
- O. Pinkney Park Business Units
- P. B & W Equine Vets at Willesley

POLICY 2

Development will not be permitted if it erodes the distinctive character or integrity of any of the areas shown on the Proposals Map identified as being of local significance. These include:

1. Village Hall field
2. Recreation Ground
3. The Allotments
4. Avon river valleys
5. Earthworks at Manor Farm
6. Grove Wood

POLICY 3

New development should demonstrate how it will contribute to and be compatible with local fibre or internet connectivity. This could be through a 'Connectivity Statement' provided with relevant planning applications. Such statements could consider such aspects as; the intended land use and the anticipated connectivity requirements of the development, known nearby data networks and their anticipated speed (fixed copper, 3G, 4G, fibre, satellite, microwave, etc), realistic assessments of connection potential or contribution to any such networks.

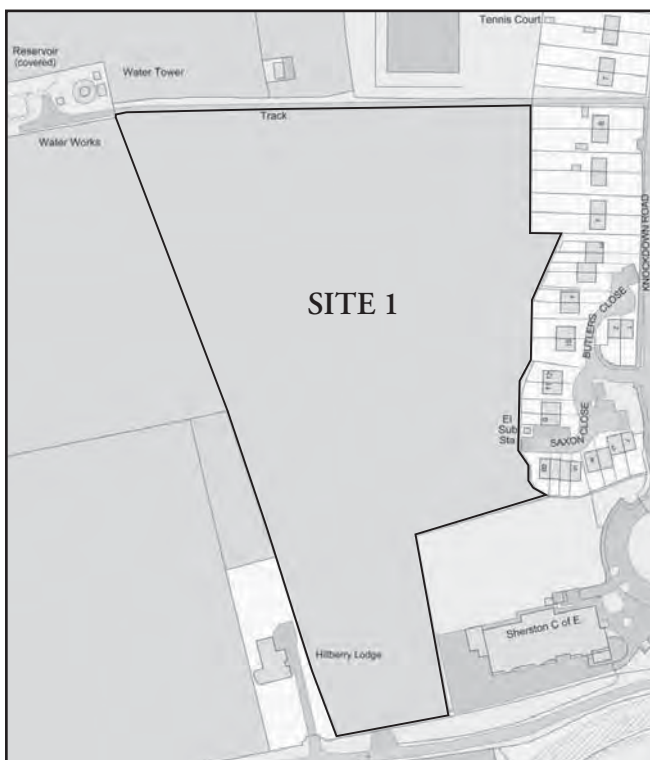
This policy aims to see new development connect to the internet with a minimum symmetrical speed of 25Mbps and with realistic future proof upgrades available. Where no internet provider is available, as a minimum and subject to NPPF 173, suitable ducting that can accept fibre should be provided either to:

- the public highway; or
- a community led local access network; or
- another location that can be justified through the connectivity statement.

Where possible and desirable, additional ducting should be provided that also contributes to a local access network for the wider community. Costs associated with additional works can be considered alongside affordable housing, or any other contributions in a viability assessment, submitted to the Council. Major infrastructure development must provide ducting that is available for community owned local access or strategic fibre deployment.

POLICY 4

Site 1 West of Knockdown Road



Approximately 3.3 ha of land situated off Sopworth Lane, as identified on Proposals Map 7, is proposed for a mixed use development to include the following:

- Sufficient land for the erection of a new enhanced GP surgery with associated parking and space for related mobile services.
- Sufficient land to allow for the future expansion of the existing Sherston C of E Primary School and staff parking together with a site suitable for the erection of a new pre-school facility with associated parking.

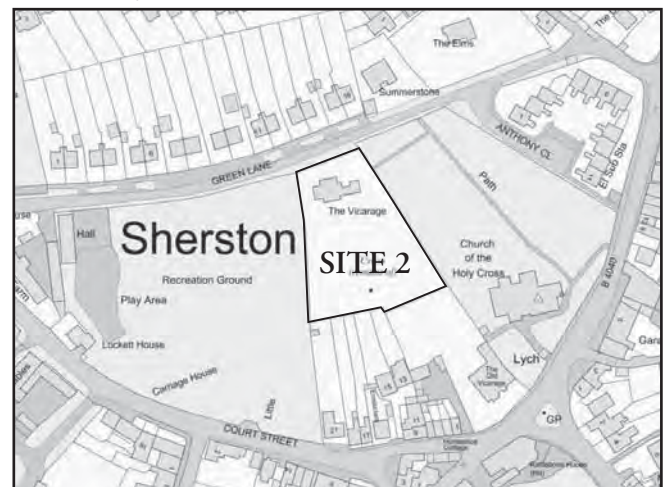
- Up to 45 dwellings to serve diverse residential needs of which 40% would be affordable housing (as required by Core Strategy Policy 43).
- Strategic landscaping and open space to retain and reinforce existing hedgerows, and to establish new areas of substantial planting and landscaping so as to mitigate the impact of the proposed development on the AONB.

Development will be subject to the following requirements:

1. Surface water management that can achieve less than current greenfield rates of run-off and decreases flood risks.
2. The provision of footpath links to both the proposed new surgery site and the western edge of the existing primary school as well as to the existing Parish playing fields to the north.
3. A design and layout that protects and preserves the character of the settlement and is consistent with the surrounding AONB.

All aspects of development will take place in accordance with a Masterplan for the site which is to be approved by the Council prior to the submission of a detailed planning application.

POLICY 5



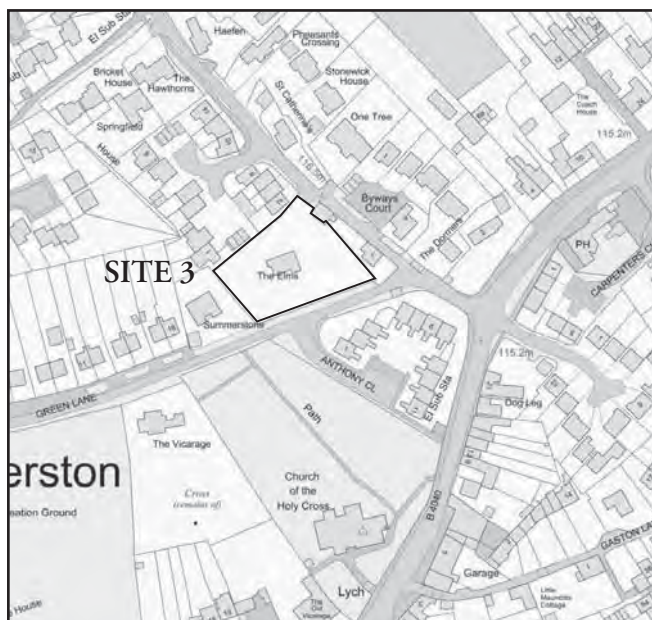
Mixed Use development is proposed on Site 2 (the Vicarage Site), as identified on Proposals Map 8, to include:

- Land for use as additional burial space.
- About 3 dwellings (including a new vicarage).

Development will be subject to the following requirements:

1. The provision of a footpath link to the existing adjoining churchyard from the proposed new burial area.
2. A design and layout that protects and preserves the character and setting of the adjoining Grade 1 listed church.

POLICY 6



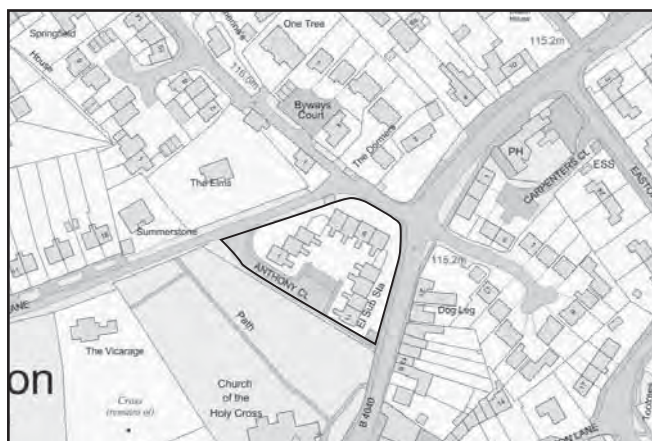
Housing development is proposed on Site 3 (Green Lane/Sandpits Lane junction), as identified on Proposals Map 9, to include:

- Land for about 4 houses.

Development will be subject to the following requirement:

A design and layout that protects and preserves the character of the settlement and is consistent with the adjoining Conservation Area and surrounding AONB

POLICY 7



Support will be given to the upgrading or replacement of the existing sheltered accommodation on Anthony Close by a purpose-built care or close care facility.

POLICY 8

In line with “Places for Walking” support will be given to the enhancement of inclusive access and crossings between the proposed new GP surgery on Site 1, The Sherston Primary School and the Post Office/Stores on the high street as well as key residential areas so as to encourage non-vehicular access to these facilities.

THIS AND ALL PREVIOUS ISSUES ARE AVAILABLE TO VIEW AND DOWNLOAD AT WWW.SHERSTON.ORG.UK

POLICY 9

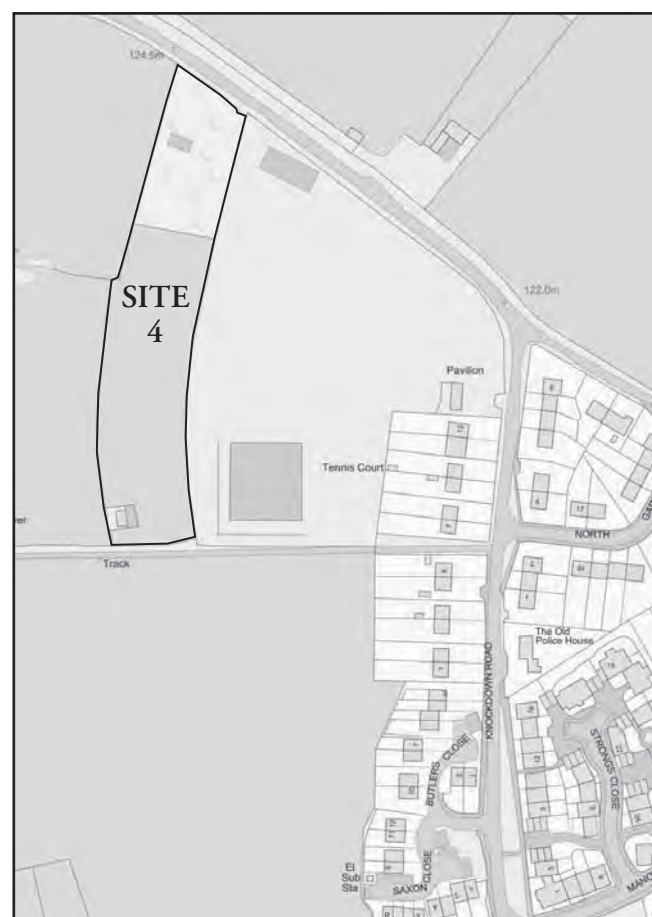
Planning permission will not be granted for development that would result in the loss of open-air sports facilities where there is a need for the facility to be retained in its current location, or the open area provides an important green space for local residents.

Where this is not the case, planning permission will only be granted where there is no need at all for the facility for the purposes of open space, sport or recreation, or where:

- there is a need for the development; and
- there are no alternative non-greenfield sites; and
- the facility can be replaced by either:
 - providing an equivalent or improved replacement facility; or
 - upgrading an existing facility.

Open-air sports facility sites are identified on the Proposals Map.

POLICY 10



Site 4 (adjoining the Football Field) will be safeguarded for the future expansion of the existing sports facilities. See Proposals Map 9.

POLICY 11

Support will be given to the erection of new/replacement changing rooms and related sports facilities on the Football Field.

Walk on the Wild Side

Time for reflection

Wild Sherston was an event that was run in the village in 2014 and those of you who attended may remember we were fortunate to have a weekend celebrating and learning about our local wildlife. Many local and national conservation groups, such as Wiltshire Wildlife Trust, RSPB, Woodland Trust, Forest School, Oak and Furrows animal sanctuary, had stands and there was also a great representation from the village school. We had talks and walks around the countryside, moth traps and a dawn chorus walk - all over two days. We were also fortunate to have great weather and a live broadcast from BBC Wiltshire radio.

One of the key outcomes I was hoping for was more ongoing interest and involvement from local people in improving our local environment. Looking back on the last three years, it's really pleasing to see what has happened. We have installed a number of barn owl and tawny owl nest boxes in and around the village. The Scouts have built a number of house sparrow nest boxes which are installed around the village and a number of bat boxes have been installed in some local woods. In conjunction with the Bristol Avon Rivers Trust (BART), lots of work has been completed along our branch of the Avon that runs along Grove Wood. We have also sowed some 1,000 square metres of wildflower seeds in the field opposite Grove Wood.

A real delight was to photograph otters along our stretch of the river. On the downside, however, we seem to have lost a couple of colonies of water voles due to the banks of the river being damaged by cattle, although there are still some along our stretch of the Avon.

So, what's next? If you read last month's Cliffhanger there was details of how you can help a very rare species of moth by planting some bushes in your garden (Berberis) which will be provided (by Chester Zoo) and can even be planted (by Butterfly Conservation). Let me know if that's of interest.

We could, for example, organise a series of bat walks to find out which species are living in the village or install more nest boxes to attract other birds such as



swifts. We could organise a BioBlitz where we find as many species of tree, flower, grass, insect, snail, etc over 24 hours with the help of a team of experts.

In December I was twice approached by people offering to help to run another Wild Sherston event - probably in 2019 as there isn't time to organise one for this May/June. With some thought and planning in early 2018 by a small group of people we could make this happen again. If you have the interest/passion and want to help, please do let me know on geoff_carss@hotmail.com. It won't take up too much time and you will learn so much!!

Finally - don't forget to feed the birds such as goldfinches (see photo) - and please wash the feeders out every couple of weeks with warm soapy water to stop infections being spread. Geoff Carss



JAMES PYLE & CO.

WILTSHIRE & DORSET
Sales and Lettings

Local Knowledge National Coverage

Call us in complete confidence for
a **free valuation** and advice
on all property matters

01666 840 886

jamespyle.co.uk

interested@jamespyle.co.uk

The Old School, High Street, Sherston






*You'll feel at home with
James Pyle & Co*



Foot Health Care



- Toe Nail Cutting
- Corn & Callus Removal
- Verruca Treatment

- Fungal Nails
- Ingrown Nails
- Diabetic Foot Care

Appointments at Tolsey Surgery on Fridays with Louise

Telephone: 07876 565774

Louise Reynolds MCFHP MAFHP
Foot Health Practitioner

Groups and Regular Events in and around Sherston

Holy Cross Church

The Coffee Shop - Fair Trade tea and coffee with homemade biscuits, biscuits and brownies - Open Thurs 9.30 am – 12 noon till Easter then Tues, Wed & Thur till Autumn

Sunday services 1st and 4th - Holy Communion, 2nd Worship Together - a service for all age groups preceded by breakfast at 9am, 3rd - Family Service preceded by breakfast at 9am See the Parish Life for more details

Mustard Seeds is a club for children aged 4 and over, from 10am – 12noon twice a month. Contact Becky Fisher 07974 030212 or becky.fisher@deanery.org.uk.

Congregational Church - In the British School Room, Services 1st and 4th each week, led or hosted by Reverend Andrew Williams Tarling, Sunday School 10.15 – 11am. Bible study alternate Mondays 8pm at BSR/Church. Brick (Lego) Club alternate Fridays 5.30 – 7pm Contact awtcharfield@hotmail.co.uk or 07921 390878 or find us on facebook. Admin - Victoria Meheust sherstoncongregationalchurch@outlook.com Sec. - clementsmary@btinternet.com or 07778 934742

Methodist Church Services every Sunday at 10.30am apart from 3rd Sunday in the month when service is held at Luckington. For further details see the Parish Life

Gauzebrook Church for Children

Children are welcome at all the services which are held in the Gauzebrook Group churches but there are some occasions which are particularly for them: **Junior Church** is held at Court House, Hullavington. This is for children from 3 to 11+. Any children under 3 need to be accompanied by an adult. Contact Becky Fisher 07974 030212 or becky.fisher@deanery.org.uk

Little Lights Every term time, Fri 10am in Hullavington church. Children aged 0-5 and their parents/carers come from across the Group, including Sherston, for songs, crafts, activities, Bible stories and snack time. Any questions, contact Chantal on 837522

Easton Grey Parish Church

See Parish Life for details of services

Link provides a voluntary car service for residents living in the Malmesbury area, taking those in need to hospital, the chiropodist, GPs' surgeries and to visit sick relatives. For further information, prospective volunteers can contact the Link co-ordinator and volunteer support officer on 840861 9am-1pm

Ancient Order of Sherston Mangold Hurlers

Why not join us and discover the joys of mangold hurling and all its traditions? For further information email ebeplaced@aol.com.

Ashtanga Yoga class Strength, flexibility, realign. Fridays 10.30-11.15 11.45am in the village hall. More info – Stuart 07986 003602 or www.pulse4life.co.uk or stuart@pulse4life.co.uk

Carer Support Wiltshire - Monthly carers café

4th Thursday each month 10.30am – 12pm at the Kings Arms Hotel, Malmesbury - come along to chat with other carers over a hot drink or two. CSW is a charity with a team of support workers who can provide information and support to carers living in Wiltshire, by phone or face to face, along with counselling and advice relating to your role. Free and confidential for anyone aged 18+. CSW offers the chance to have a break through social cafés, days out, activities, craft groups and complementary therapies. More details or to register for some support, visit www.carersinwiltshire.co.uk, email info@carersinwiltshire.co.uk or freephone 0800 181 4118 (01380 871690 from a mobile).

Castle Combe Colts Football Club Join a charter standard club with CRB checked FA qualified coaches, fantastic playing & training facilities and a healthy inclusive culture – take a free 4 week taster session. Currently recruiting for the following age groups: Mini-Kickers (Rec/Y1) U10 (Y5) U11 (Y6). Tel 837286 or secretary@cccfc.co.uk www.cccfc.co.uk

Church bell ringing Practices are every Wednesday 7.30 - 9pm. Call Geoff Martin 840375 or come along.

Dance classes at The Scout Hut Fun and friendly classes for children to learn ballet and/or jazz on Tuesday afternoons during term time Preschool/infant ballet 3.30 - 4pm, Jazz 4 - 4.30pm. Junior ballet 4.30 - 5pm, Jazz 5 - 5.30pm All abilities welcome. For more information please call Abigail on 07720 396195.

Drawing Classes in Sherston Classes are held in the British Schoolroom during term times Weds either 10am to 12noon or 1.30 to 3.30pm. Students have individual attention and the classes are friendly and welcoming. We work on observational drawing in a range of media, pencil, watercolour crayon and pastel; subjects include plants and flowers, natural objects and still life groups. For further information please contact Heather Martin heather@geoffmartin.plus.com or phone 840375

Eudo Tae Kwon Do Thursdays 7-9pm in Sherston primary school hall. For details contact Simon Penfold 824773.

Footpaths group 'Sherston Walks - a guide to local rights of way', featuring 10 local walks and is now on sale at the post office. If you would like to learn more about the footpath group and perhaps take part in some of its activities please come along to a meeting. For further information contact Maggie Harries on 841047 or maggie@harriespartnership.com Now online @ www.sherstonwalks.org.uk

Forest School Club

Weekly outdoor activities during term time at both Sherston and Luckington School and further fun extended sessions during school holidays. For further information please contact nikiwalden-forestschooll@hotmail.co.uk

Fresh Air Fitness Total body outdoor workout on Sherston Rec Fridays 9 -10am. Info: www.pulse4life.co.uk Stuart 07986 003602

Hogwards The Help a Hedgehog Hospital charity has a satellite hospital in Tetbury. Mary Hinton 07779 299224 www.helpahedgehog.org

Ingleburn Trefoil Guild Meets on the 3rd Monday of the month, usually at St. Mary's School Tetbury at 7.30 p.m. Lifts are available for non-drivers in the Sherston/Malmesbury area. Details from Helen Price, 503187 or retreatcottage17@btinternet.com

Luckington Pre-School A well-established Montessori inspired Pre-School, for 2½ to 5 years old. Mon-Fri 9am-1pm, during term time. Government funding available and childcare vouchers welcome. For more information, call 840028, email chair@luckingtonpreschool.org.uk or visit www.luckingtonpreschool.org.uk

Malmesbury Area Board Meeting

For details see www.wiltshire.gov.uk/areaboard

Malmesbury Concert Band Rehearsals on Fri evenings in Malmesbury, 7.15 – 9.15pm. The band performs at local Bandstand. For further details and to ascertain current vacancies see our website www.freewebs.com/malmesburyconcertband/ and/or contact Tony Fleming, the Musical Director, on 575229 or tony@jacfleming.plus.com

Malmesbury Community Choir

The Malmesbury Community Choir is a non-audition performing choir that meets for rehearsals in the Old School Room at the Town Hall every Monday evening from 7.30-9.30pm. The waiting list is currently full for ladies, but we would always welcome extra men and young people between 14-21 years old. Membership is £50 per quarter, but membership for U18s is free and U21s is half price. For further information please email info@malmesburycommunitychoir.org, visit the website at www.malmesburycommunitychoir.org or www.facebook.com/MalmesburyCommunityChoir.

Malmesbury Embroiderer's Guild

The local branch holds monthly meetings at Little Somerford Village Hall. On alternate months there are Saturday workshops on a wide range of topics, and on the intervening dates there is a Tuesday evening talk at 7.30pm. We always welcome newcomers and occasional visitors, although prebooking is essential for the workshops. Just turn up for the talks – non members £5.

For further information please phone Heather Martin 840375 or www.malmesburyembroiderers.blogspot.com

Malmesbury Luncheon Club Over 60s meet every Wednesday at midday in the Wesleyan Room of Malmesbury Town Hall for a chat and a 2 course lunch followed by tea or coffee. £3.50. Please call Helen Churchill on 840080 if you'd like to attend. New members most welcome. Volunteers also needed to prepare and serve lunch, no washing up.

Malmesbury Film Society

Memorable new, classic and foreign films are shown at 7.30pm every 3rd Sunday of the month at St. Mary's Hall, Malmesbury - no booking or membership necessary. Join us for unique films and an enjoyable evening out. See our website www.malmesburyfilmsociety.org.uk for details on all upcoming films.

Malmesbury Villages Community Partnership

For details contact Woody Allen 390110 mark.allen@allencan.co.uk

Malmesbury Rainbows, Brownies & Guides

For details contact the Division Commissioner at malmesbury@wncounty.org.uk

Malmesbury Rangers Girls over 14 meet every 2nd Thurs in the month. Further details from Gill Shaw on 825647 or email sgshaw@orchardshaws.co.uk

North Wiltshire Villages Flower Club Meets at 7.30pm on the 3rd Wed evening at Crudwell Village Hall. Members come from the surrounding villages to hear speakers and enjoy floristry demonstrations and do workshops and competitions. Further details call Margaret Stanford on 01285 770 639

Parish Council Meeting Takes place on the 2nd Thurs each month at 7.30pm in the village hall. Minutes of meetings can be read online at www.sherston.org.uk. Further details contact Sarah Wood on 840197 or clerk@sherston.org.uk

The Rattlebone Boules League Consists of 48 teams playing in 3 Leagues. Contact Tony Towle on 840574.

Red Bull Inn Boules Friendly boules club at the Red Bull Inn (Malmesbury Rd) - meets every Thurs at 7.15pm - any level. For the more competitive members, there is a team playing in the Cotswold Pétanque league. To enter, please contact Sue McKechnie on 840601 or susannemckechnie@hotmail.com

Rotary Club of The South Cotswolds Meets at The Horse Guards Inn in Brokenborough each Mon at 7pm, with dinner served at 7.30pm. Visitors are always welcome to our meetings, as are guests and anyone interested in Rotary and in helping the local Community. Further details at website www.rcsc.co.uk or from Ian Pegg on 840986.

Senior Club Meets at 2.30pm during summertime in the Small Hall of VH, more details call Helen Quirk 840516.

Sherston 1016 Fundraising for local good causes and charities. Contact sherston1016@gmail.com or Martin Jacques 07717 424619

Sherston Baby and Toddler Group The group is a fun way for babies, toddlers and their parents to meet and play. Meets at 10 - 11.30am each Tues in the British School Room with toys for all stages from wrigglers to toddlers, craft activities, music and snacks for all and a cup of tea/coffee for the deserving parent. For further details contact, sherstontoddlergroup@gmail.com or like us on Facebook for regular updates www.facebook.com/sherston.toddlers

Sherston Badminton Club We play every Tues evening from 7.30pm in the Village Hall from Sept to the end of May. New members welcome - mixed ages (over 18) and abilities. For more information contact David Boyle 841587 or email djboyle@hotmail.com

Sherston Brownies Meet every Wed during term time 5.45 - 7pm in the Scout Hut. All girls are welcome to join after their 7th birthday, but there is a waiting list. Visit www.girlguiding.org.uk and follow the parents link to register your interest, for all other queries contact Tawny Owl (Nicky) at nicky.gray@btinternet.com
2nd Sherston Brownies started in Sept 2016, for details contact Spectacled Owl (Lara Farahar) at sherston2ndbrownies@outlook.com or call 841085

1st Sherston Cub Scout Pack Membership of the Cub Pack is open to those between 8 and 10 ½ years old. The Pack has regular meetings on Fri nights in term times from 6.30pm to 8pm. There is a waiting list for Cubs, and those interested should email sherstoncubsandscouts@gmail.com to obtain an application form

1st Sherston (John Rattlebone) Scout Troop Is open to young people from the village and surrounding parish from the ages of 10 ½ to 13 ½. We meet at the Scout hut on Tues nights from 7pm to 9pm during school term times. To join contact Riaan van Rooyen riaan@pulse-software.co.uk There is currently a small waiting list to join.

Sherston Whitewall Explorers You don't need to have previously been a member of scouts or guides to join us, just be aged between 13 ½ and 18 and free between 8.30 and 10pm on a Fri night during term time; for further information please contact Darren Walsh - 841043 or Ewan Blair - 840096 - whitewallexplorers@googlegmail.com

Sherston Drama Group The Drama group puts on plays and pantomimes in the Village Hall. If you are interested in taking part or helping out contact Sue Lehrer (Chairperson) lehrer.sue@icloud.com or 07780 661830

Sherston Town FC The club play in the Stroud league at Knockdown Park on Sat afternoons - spectators and new players welcome. Contact Pete Brock on 07912 777647 or peter.brock666@btinternet.com

Sherston Swimming Club Our Club is a friendly and sociable group open to anyone of any swimming ability. We swim at Westonbirt Leisure Centre on Wed evenings from 8 - 9 pm. Everyone swims at their own pace although there is a lane for faster swimmers. £45 for 10 weeks. For further information please phone Maggie (840969), Annabel on 840592 or Heather (840375).

Sherston Magna Cricket Club Junior nets Mondays 6pm and Senior nets at 6.30pm on Tues nights at Pinkney Park. If you would like to get involved with local cricket please email cricket@sherstonmagnacc.co.uk or visit the website www.sherstonmagnacc.co.uk

Sherston Netball Club Training every Mon 7.30pm at Westonbirt Leisure Centre. All ages and abilities welcome. £3 per session. For more info, please contact, Lauren (07885 597429), Saara (07739 552336) or Kate (07792 064438).

Sherston Community Choir The community choir with conductor Trudi Baker meets at 7.30pm each Wed in term time in the British School Room. £3 per session. All welcome. Further information from Sheila Cutcher sheilacutcher28@gmail.com or 840067, or on Facebook.

Sherston Photography Forum A monthly group has formed in Sherston for anyone with an interest in photography 2nd Tues of each month at 7.30pm in the Village Hall.

For details call Nick Holland on 841019 or nholland63@btinternet.com
Sherston Pilates Daytime and evening classes held in the village hall. Run by Saara Sharman, Chartered Physiotherapist. All ages and abilities welcome. For more details contact Saara on 07739 552336 or sherstonpilates@gmail.com

Sherston Tennis Club The tennis courts are located on Knockdown Road, open to all over the winter. Children's Sat am coaching will start after Easter. If you would like to be emailed with details nearer the time, please contact Sophie Cheetham on 07786 990045 or sophcheetham@gmail.com. If you're interested in joining the club or using the courts, please contact Nic Riley on 840682 or nic50riley@gmail.com.

Sherston Theatre Club Excursions with a Sherston High Street-to-venue return coach service. Annual fee £20. Listings under www.communitate.co.uk/wilts/sherstontheatreclub/ or contact Helen Quirk on 840516 or helenandjim@thequirks.plus.com

Sherston Velo A cycling club formed of enthusiastic road cyclists from Sherston and the surrounding area. There are regular rides each weekend morning with a fast paced group leaving first for an hour, followed by a longer club run. For membership and other information about the club, visit the website www.sherstonvelo.cc or email Mark Walsh at secretary@sherstonvelo.cc

Sherston Village Hall Available for hire by all. Ideal for meetings, events, parties etc. For details Chris and Tony Weedon 841377 or email dogleg3@gmail.com

Sherston W.I. Meetings on first Thurs of month Mar - Sept in the Village Hall (except Apr due Spring Play) at 7.30pm and Nov/Dec/Jan in the British Schoolroom at 2.30pm. No meetings but celebration meals Oct and Jan. Visitors always most welcome £3.50. Further information: Secretary 840578

Sherston Young Craft Group Every Mon 6.45 - 8.15pm in the village hall (children 9+). £3 (incl all materials) per evening paid in advance of each half term. To join, please contact Minnie Hulme on 841118 or email hulmessherston@sky.com

Street Dance classes in Sherston Bristol's Pumped dance school is running classes in Sherston Village Hall every Thurs. It's a fun, high energy dance class for girls and boys. The 4-6 year old class will run from 4.30pm to 5.15pm, with 7-11 year olds from 5.15pm to 6.15pm. Drop in for £5 per class, £16 pay monthly - or two siblings for £9 per week. Email Claire to register your interest at info@dancepumped.co.uk or just pop in, more details www.dancepumped.co.uk

Tetbury Camera Club Meets every Tues evening from Sept to end of May at 7.30pm in The Priory Inn, Tetbury. For more information and current programme visit <http://tetburycameraclub.org.uk/> or call Liz Cooper 840482. Visitors welcome.

WEA Sherston Arts, Literature and History Courses The WEA (Workers's Education Association) offers courses on the Arts, Literature and History in the British School Room, Cliff Road. For more information or to book a place contact Warwick or Pat Jones on warwickandpatjones@gmail.com

Village Hall 300+ Club For an annual subscription of only £0, give yourself the opportunity of winning a cash prize in every monthly draw whilst supporting the Village Hall. If you would like to join, or need more information, contact the coordinator, Lin Prior on 840846.

Wiltshire Walks The walk lasts approximately 45 minutes and often ends with a cup of tea or coffee. Further information contact Sarah Sims on sarah.sims@wiltshire.gov.uk or 07846100233. For a full list of walking groups in Wiltshire please visit www.wiltshire.gov.uk/getwiltshirewalking.

Yoga for All Mon evenings 7.45-9.15pm in the village hall. Drop in rate £9 reducing to £7.50 if you take up the course. More details contact Theo 07818 401110 or theo@wildyoga.co.uk www.wildyoga.co.uk

If you run a club, society or organisation in Sherston that holds regular events such as the above and wishes to be listed, please supply your details and we will add them to the Regular events list. If you have a particular event then please write a short piece about it and we can include it as an article and put the details in the What's On list for that month.

WHAT'S ON

Dates for your diary 2018

If you're planning a community event in the parish why not let the Cliffhanger have the basic details as soon as possible? Email info@sherstoncliffhanger.co.uk to add the event to this list. Everyone will then know what's occurring in good time and it will help prevent events clashing.

Sherston

Wiltshire Council Mobile Library

In Sherston High St Every fortnight on Saturdays 10.30am – 12.45pm Feb 10 & 24, Mar 10 & 24, Apr 7 & 21, May 5 & 19, Jun 2, 16 & 30 For further details call clerk@sherston.org.uk or mobilelibraries@wiltshire.gov.uk

The Angel Hotel

Check boards for more details of events or call 841627 or contact sherstonangel.co.uk or visit www.sherston-angel.co.uk/

The Carpenter's Arms

Check boards for details For further details call 840665 or visit www.facebook.com/carpenters.armsherston

The Rattlebone Inn

Monday Quiz Nights Every Monday at 7:30pm Free entry and prizes for the winning team
Check boards for more details of events, call 840871, follow on Twitter or visit www.therattlebone.co.uk

Church events at The Holy Cross

Ash Wednesday services will be at 7.30 pm on 14 Febr in Sherston (with ashing)

Special evening on Feb 22 at 7.30 pm. Share your views on the future development of the church community, the use of the building, the links with the wider village and similar matters

Lent Groups Monday evenings 7.30-9.00pm at Swallow Barn, Stanton St Quintin: Ruth Williamson 838412 Tuesday afternoon in Sherston, contact David Miller (david.miller@methodist.org.uk); Wednesday lunchtime Lent Lunch with short study at 55 The Tarters Sherston, from midday – contact Susan Harvey on 840696 or Christopher Bryan on 837522

Wednesday evening in Luckington at Bridges Court, contact Christopher Bryan on 837522 Thursday evening at Hullavington at Court House from 7.30 pm, contact Henny Metters on 837778

Mothering Sunday 11-Mar

Good Friday for Children

11am-12.45 - children's CRAFT ACTIVITIES, STORIES AND SONGS, 12.45-1.45 - LUNCH followed by getting ready for... 2pm GOOD FRIDAY FAMILY SERVICE 2.30 WALK TO LUCKINGTON (Parents and friends please come to support us – dogs welcome) For further details call Rev Christopher Bryan

837522 or Christopher.bryan123@btinternet.com or twitter @chrisbryanrev // blog <http://revchristopherbryan.wordpress.com/> Rev Susan Harvey 840696 or susan.harvey44@hotmail.com

Sherston Market

Now in aid of Village Hall repairs Local crafts and produce which vary each market All stall fees will now be going directly into the Village Hall Renovation Fund. You can also enjoy delicious delights from EMMA'S KITCHEN from bacon rolls to pie, mash & peas and homemade cakes. The food can be eaten in the hall or have as a take away. Free charity table in entrance 10am-4pm

Sat 10 Mar Sat 14 Apr Sat 12 May Sat 9 Jun No market in July as Boules Day Village hall For further details call Alison on 07909 737096 or pollyatkins59@btinternet.com

Sherston Senior Club

Talk by Danielle Mills - Medical Detection Dogs Tues 6 Feb 2pm BSR Members free, Visitors £2

Stephen Wells - Stories of The Great Musicals Tues 20 Feb 2pm BSR For further details call Helen Quirk 840516 Please contact Pearl Dyer 01666 840619 to reserve a place on the outings

Sherston 1016 Booksale

10th Feb 9am to 12noon Free entry, books, CDs and DVDs For further details call Richard Langley on 840112 or 07879 612776

Sherston WI Talks

AGM, followed by a quiz 1 Feb, 2.30pm, British School Room Talk by Rupert Evelyn, Wales and West of England

Correspondent for ITV News Thu 1 Mar

For further details call Jill Woodward 840578 or jillwoodward222@btinternet.com

Cuppa, Cake and a Chat

We are looking forward to seeing you at one of our Cuppa, Cake and a Chat get togethers every fortnight. The next few dates are 13 and 27 Feb and sessions will take place in the British School Room from 2.30pm. No set charge but a donation box will be available for anyone who feels like giving a little towards the homemade cake. These sessions are open to everyone across all age groups and we look forward to seeing you there.

Open Meeting with talk from Caroline Lowsley-Williams, Chavenage Hall Everyone is welcome to hear from Caroline Lowsley-Williams, whose family have lived at Chavenage Hall since the late 19th Century. Chavenage has played a notable part in a number of film and television productions, the Poldark series being one of the more recent ones. Thurs 19 Apr Book your seats to be sure of your place. Cost is £8, which will include refreshments. Please contact Jill Woodward (840 578 or jillwoodward222@btinternet.com) or Sue Heathcock (829 344 or thegardenhouse@btopenworld.com). British School Room For further details call Jill Woodward 840578 or jillwoodward222@btinternet.com

Sherston Magna Cricket Club

Winter net sessions for adults and juniors at Westonbirt Sports Centre (directions: www.westonbirt.org/information/directions) Juniors - Sundays 18 Feb - 18 Mar inclusive Adults: Sundays 4, 18 Feb, 4, 18 Mar and 1 Apr

Junior Nets U9/U11: 2pm until 3pm U13/U15: 3pm until 4pm The cost for all 5 sessions is £15, or £5 for each session

Perfectly You

Cosmetic Injections

Treatments that help soften the fine lines and wrinkles on your face:

- ☆ Free personal consultation prior to undertaking any procedure
- ☆ Forehead lines
- ☆ Frown lines
- ☆ Crows feet
- ☆ Treatment for excessive underarm sweating

Dr Pip Pettit BM FRCGP Aesthetic Practitioner, Sherston, Wiltshire Tel: 0796 7007 969 www.perfectly-you-aesthetics.co.uk



Adult Nets 4pm until 5pm The cost for all 5 sessions is £20, or £5 for each session Please pay in cash when you arrive at your relevant session
AGM Tues 6 Feb 7.30pm at the Rattlebone
League fixtures on <http://sherstonmagnacc.co.uk/matches>
 Pinkney Park Ground For further details call cricket@sherstonmagnacc.co.uk or visit <http://sherstonmagnacc.co.uk>

1016 Pancake Eating Competition

Shrove Tuesday 13 Feb from 7.30pm £2 entry
 The Rattlebone Inn For further details call Richard Langley on 840112 or 07879 612776

Fundraiser for Sherston Village Hall Repairs

Brush up the Bogs presents The Tribe + The Arkansaw Jukebox Collection in concert in aid of the VH loos. DJ Crackle and Pop, food from The Sherston Chili Smokehouse and Big Tony's Jumpin' Gin Joint Sat 24 Feb 8pm till late Tickets are £15 each and you can get them from the Post office or on line here www.eventbrite.co.uk/e/the-tribe-the-arkansaw-jukebox-the-old-rifle-range-skank-off-tickets-41816776103

"The Old Rifle Range - Sherston" formerly known as the Village Hall For further details call www.facebook.com/events/2000971223511769/ or visit www.facebook.com/ArkansawJukebox/

Beaufort team chase

Team chasing returns to Sherston after 35 years! Run over Manor farm and nearby Sandy farm, the course will incorporate timber, walls, hedges and natural obstacles and will be a thrilling adrenaline rush for those wishing to ride, and for those on foot, an exhilarating spectacle! Sun 18 Mar Various trade stands, a licensed bar and food available throughout the day - Charity partner is Wiltshire Air Ambulance Starting at 9am we will have 4 classes running throughout the day with a Hunter trial/pairs class over the novice course, a Novice team chase and an Intermediate speed and bogey class. For those wishing to ride, entries will be via horse-events and will be available soon.

For further details call lottiebostock@gmail.com Facebook page: Beaufort Team Chase or visit www.beaufortteamchase.co.uk

'Sherston Brick Club'

British School Room

Friday 9th February and Friday 23rd February
 from 5.30 to 7pm
 Free entry. All ages welcome.

Bible Study Group

Monday 12th and Monday 26th February
 from 8pm in the British School Rooms
 All welcome!

M.Vincent Windows & Glazing

For all your glazing needs
 Wiltshire & Gloucestershire areas
 Fast, friendly and efficient service
 Available at your convenience 7 days a week
 CALL FOR YOUR FREE QUOTATION
 07890 138453 / 01666 460106
enquiries@mvincentwindows.co.uk
www.mvincentwindows.co.uk

Sherston Drama Group

Spring Play: SECONDARY CAUSE OF DEATH Apr 4-7 at, 7.30pm, Doors open 7pm The third play in the Inspector Pratt trilogy: Secondary Cause of Death. It is just as funny as the other two, as the hapless inspector tries to make sense of events at Bagshot House in the months leading up to World War 2. Can the audience guess the identity of the murderer, or indeed the next victim, before Pratt does? Tickets (including refreshments) on sale from the beginning of March at Sherston Post Office Stores

Worker's Educational Association (WEA) Art, Literature and Music courses

WEA Courses for 2018 Art courses from the Workers Educational Association return to Sherston for the Autumn and Winter The courses offer the opportunity to learn more about interesting topics from expert tutors in an informal and convivial setting

Paul Chapman: Introduction to the Art of Spain The course provides a brief overview of the Spain's artistic history, focusing on the paintings from the Middle Ages to the 20th Century. The six sessions will focus on the themes of landscape, war, religion, identity, love and portraits and explore how the painters reveal themselves through their work Narratives from these paintings will also inform us of Spain's history through religion, regional landscapes and through the conflicts that have shaped the nation. 6 meetings. Fri 5 Jan to Fri 9 Feb 2018. 10am - 12.15pm

Access the WEA Find A Course service at www.wea.org.uk/south-west using the postcode SN160LN to locate all the Sherston courses British Schoolroom For further details call Enquiries and bookings contact Warwick or Pat Jones on 840764 or warwickandpatjones@gmail.com or visit www.wea.org.uk/

Knockdown The Holford Arms

Live Music every weekend Check boards for more details of events For further details call 01454 238669 or info@theholfordarms.co.uk

Luckington Youth Café

Weekly event for ages 11-16 Saturdays 6-6.30pm Big Questions & Discussions, 6.30-7.30pm Food, games and chill in Luckington Village Hall For further details Joel Faulkner joel.p.faulkner@gmail.com

Location, location, negotiation.

Stacks is the most experienced buying agency in the UK, finding the right houses and negotiating the best prices to save you time and money.

Call us to talk about what you are looking for.

Craig Fuller

Regional Director - Cotswolds, North Wiltshire, Bath & Cheltenham
 Stacks Property Search & Acquisition Ltd

07767211707

craigfuller@stacks.co.uk

STACKS

PROPERTY SEARCH & ACQUISITION

www.stacks.co.uk

arp

RICS

AS



Westonbirt The Arboretum

STIHL Treetop Walkway The main walkway is step-free, making it accessible to visitors on foot, using mobility scooters, wheelchairs and pushchairs and to those with dogs on leads. It is 300m long and gradually rises on gentle inclines to a height of 13m. Scramble up to the crow's nest viewing platform; cross the rope bridge; Peer through the mesh-floored section Specialist Wood Sales every Sat 10am-1pm in aid of FOWA

Secrets of Silk Wood - guided walk Sun 4 Feb Sun 4 Mar Departs the Welcome Building at 11am - free after admission - dogs on leads welcome

Coppice Open Days Join our coppice team on the last Sun each month at the end of the tree top walkway to learn more about woodland coppicing. And pick up some coppice products for the garden 10am-4pm Dogs allowed

Summer concerts on sale Thurs 14 Jun - The Script Fri 15 Jun- Paul Heaton and Jacqui Abbot Sat 16 Jun Paloma Faith; Sun 17 Jun George Ezra

Westonbirt Arboretum For further details call 880220 or visit www.forestry.gov.uk/westonbirt

Till Feb 2018 admission prices Adults £7, Concs and those arriving by bike or public transport £5, Children (5-18) £3, under 5s free, 1 carer allowed free per paying disabled visitor

Easton Grey Whatley Manor

Fine Wine and Drinks Society The club will meet for tastings once a month and will be held in The Green Room, the brand new dining space. Annual membership £50 per annum. Monthly tastings £15. Mon 26 Feb, Mon 26 Mar To book contact Daniel Davies on 827076 or email sommelier@whatleymanor.com

Sunday Cinema £42 includes your cinema ticket for the screening and popcorn and a 3 course lunch or dinner in Le Mazot brasserie. Lunch first from 12 noon with the film starting promptly at 2.30pm. For the dinner screening enjoy the film first starting promptly at 5pm followed by dinner in Le Mazot brasserie from 7.15pm. 'Victoria & Abdul' Sun 18 Feb starring Ali Fazal, Tim Pigott-Smith, Eddie Izzard, Adeel Akhtar and Michael Gambon.

'Borg McEnroe' starring Shia LeBeouf, Stellan Skarsgard, Tuva Novotny and Bjorn Granath. The story of the 1980s tennis rivalry

between the placid Björn Borg and the volatile John McEnroe.
Chef's Table in the Green Room Feb: Taco night Thurs 1; Italian night Thurs 8; Parisian night with guest chef Martin Caws Thurs 15 Feb; Tapas night Thurs 22
Japanese night - Thur 1 Mar **Tapas night - Thurs 8 Mar**
Taco night - Thurs 15 **Fruits de Mer - Fri 23 Mar**
Thursday 29th - Italian night
For further details call 834026 or visit www.whatleymanor.com

Malmesbury Malmesbury Abbey Skate

Malmesbury Abbey Skate Wed 14 -Fri 16 Feb About 600 children and young people took to the ramps in Malmesbury Abbey Skate during the last February half-term - join us this year for the 10th year. Skating, Scooter, Demos, Competitions, Music, Cafe and workshops. For further details call www.facebook.com/abbeyskate, www.malmesburyabbey.com/skate or email us on john@malmesburyabbey.com or visit www.malmesburyabbey.com/skate/

Exhibition: Wiltshire At War

Wiltshire Does Its Bit includes many interesting stories of local nurses, dairymaids, small businesses, and local people providing comfort to soldiers of WWI— all doing their bit for the war effort. The museum will also have a display commemorating local soldiers and sailors who lost their life on the Somme and Jutland free entry Open Summer: Mon to Sun 10.30am to 4.30pm Winter (from Oct to Mar) : Mon to Sat 10.30am to 4.30pm, Sundays: 11.30am to 3.30pm. For further details call or visit www.athelstanmuseum.org.uk

Singing for the Brain

Singing sessions are led by a trained Singing for the Brain leader Every other Monday 1.30-3pm a free service (funded by Wiltshire council) is designed to be a fun, stimulating and social activity for people with a diagnosis of dementia and their family/friends or carers. For session dates and to book your place please call Pam Ollis at our Chippenham office.

Malmesbury Activity Zone, Bremilham Road
For further details call 01249 443469 or e-mail mwlts@alzheimers.org.uk or visit www.alzheimers.org.uk

Malmesbury & District University of the Third Age

U3A is a unique organisation which provides educational, creative and leisure opportunities for retired and semi-retired people. There are over 400 members and around 40 different interest groups



Nestled in pastureland on the outskirts of Sherston.
Three lovely double, en-suite rooms.
Peaceful and private, separate from main house.

Alastair
Sanday's



tripadvisor

Luckington Road, Sherston.
01666 841445

www.carriersfarm.co.uk
info@carriersfarm.co.uk

RACEHORSE PURCHASER

Flat & National Hunt
Group 1 winners from 19,000gns



www.richardknightbloodstockagent.com
richard@richardknightbloodstockagent.com
Mobile: 07769 349240

THE RED BULL INN

BRISTOL ROAD, MALMESBURY, SN16 0RA

01666 822108



FOOD SERVED
THURSDAYS AND FRIDAYS
12PM - 2PM / 6.00PM - 9PM
SATURDAYS 12PM - 9PM
SUNDAYS 12PM - 5PM

TWO FOR ONE OFFER ON ALL MAIN MEALS ON PRESENTATION OF THIS ADVERT

NOT TO BE USED IN CONJUNCTION WITH ANY OTHER OFFERS

HOME COOKED SUNDAY LUNCHES
SELECTION OF REAL ALES
FAMILY FRIENDLY
CHILDREN'S INDOOR PLAY AREA (WEEKENDS ONLY)
LARGE BEER GARDEN
FUNCTION ROOM AVAILABLE TO HIRE
SKITTLE ALLEY
BOULE PISTE

Find us on Facebook @theredbullinn
or
email.theredbullinn@outlook.com

including arts and crafts, book group, history, gardening, dancing, theatre trips, languages, walking etc. U3A meets on the 4th Thursday of the month at Malmesbury town hall from 10- 11.45 for tea/coffee, a chat and to listen to our monthly speaker. Charge 50p 'Patagonia- A Welsh Journey' - Mike Lewis Thurs 22nd Feb 'Snatched from Danger' personal experiences of life in the Army 1990-2016 Colonel Deborah Poneskis Thur 22 Mar AGM Thur 26 Apr Assembly Rooms at the Town Hall For further details call Membership Secretary Ann Roberts-Phare on 823971 or visit www.malmesburyu3a.org.uk

Wiltshire Council Sunday Lunch Club

Monthly get together for those who'd like some company and a good Sunday lunch Each month 12.30pm for 1pm start. £10.50 pp Transport can be arranged if needed

For further details call Ellen Backer 07557 922020

Malmesbury, Chippenham

Programmes and Activities at The RISE Trust

FREE Children's Centre activities The RISE Trust supports many projects in North Wiltshire with 6 Children's Centres in Chippenham, Cricklade, Royal Wootton Bassett and Calne. We provide Children's Centre services for the Corsham and Malmesbury areas. We also run Youth services, such as mentoring and youth groups, and provide services to the elderly. The RISE Trust started as an initiative from a local church in Chippenham in 2004.

Seniors' lunches The Rise Trust Volunteers regularly serve a Community Lunch for Seniors at St Paul's Church Hall, Malmesbury Road, Chippenham at 12pm. This is a great way to make new friends and socialise. For more details please contact Vicky Watt on 01249 445288 or email vickyw@therisetrust.org
Youth Club and Youth Café We run lots of activities for young people in Chippenham including a Youth Club and Youth Café Gemma Matthews 01249 464008 or gemmam@therisetrust.org
For further details call 01249 463 040 or visit www.therisetrust.org/programmesevents/

Events at Malmesbury Children's centre

Workshops for toddlers, infants and new parents Free parenting courses for parents with children under 5 - check website for details free crèche Malmesbury Children's Centre For further details call 825566 or email: malmesburycc@spurgeons.org or visit www.malmesburycc.org

Ride On Cycles

The Mobile Cycle Workshop That Comes to You

Full range of servicing & repairs carried out by a City & Guilds qualified mechanic.

Contact Andy on:
01454 880872 / 07443333219
andy@ride-on-cycles.co.uk
www.ride-on-cycles.co.uk



FOR ALL YOUR LANDSCAPING NEEDS
MOBILE NUMBER: 07973736912
EMAIL: chris.sagegardendesign@gmail.com
sagegardendesign.co.uk

Grittleton

Moviola - the Touring Rural Cinema Scheme

Goodbye Christopher Robin [PG] Wed 28 Feb Doors open 7pm for 7.30pm start £6 from Lesley or on the door

A rare glimpse into the relationship between beloved children's author A. A. Milne (Domhnall Gleeson) and his son Christopher Robin (Will Tilston, Alex Lawther), whose toys inspired the magical world of Winnie the Pooh. Along with his mother Daphne (Margot Robbie), and his nanny Olive (Kelly Macdonald), Christopher Robin and his family are swept up in the international success of the books; the enchanting tales bringing hope and comfort to England after the First World War. But with the eyes of the world on Christopher Robin, what will the cost be to the family? Despite the PG classification, this is not a children's film. Rather in the manner of Saving Mr Banks, it explores some quite dark themes.

Grittleton Village Hall For further details call Lesley 01249 783157 or email L_palmer@btinternet.com or visit www.moviola.org/

Rural Arts Wiltshire

A LITTLE LOVE CABARET by Spiltmilk Dance 'A scrapbook of real-life love stories collected from across the country...ultimate heart throbs, full-on obsessions and awkward mixed up emotions combine in a heart-warming...cabaret reminding us of the lengths we will go to for love...' Sat 14 April at 8pm (doors open 7.30pm). Adults £8, Concessions £7, Children (under 16) £5, Family (2 adults/2 children £21) Bring your own refreshments Age recommendation 12+ Grittleton Village Hall For further details call or visit www.ruralartswiltshire.org.uk

Tetbury

Tetbury Goods Shed

Vegetables from Aunt Addie's Vist the amazing Ros for all your delicious locally grown vegetables. Adeline Farm is a farming venture with the emphasis on quality, fresh, local and seasonal produce. Although not certified as Organic they are committed to using organic methods - and to working with nature and respecting wildlife. They are also totally committed to producing the finest produce possible. 10am-2pm Adeline Farm Community Project offers facilities to the disabled, people with learning difficulties, and other groups in the Wilts. /Glos. area.

Art Exhibition Sandra Chin - Wanderings 2 Feb 11-3pm Meet the artist 3rd Feb

Comedy from Matt Roseblade 2 Feb 7.30pm £12 Adult content
Hoot Owl - Master of disguise 10 Feb 3-4pm £7 -10 £26 family Fun games and humour for all ages from 4 to 94. "Hoot Owl" is based on the book of the same name, short listed for the "Laugh Out Loud" Book Award. Full of original songs, colourful puppets, animation, hilarity, and rapid costume changes abound in this wildly inventive new show. ALL the family aged 4+ Running time approx: 1hr.

Jazz night 16 Feb 7.30pm £16 Fretless4 bring you an evening of smooth, easy listening jazz combining tunes from the American songbook with shades of swing and even some Latin interludes.

The Occasional Orchestra 24 Feb 7.30pm £12 "purveyors of melodic folk pop and peddlers of quality original songs using luscious harmonies layered upon infectious rhythms leading their audience gently into places past and present where extraordinary things do happen"

How to reach the Shed - use the sat nav postcode GL8 8EY For further details call info@shed-arts.co.uk or visit www.shed-arts.co.uk

Delivering a First Class Service



Tel 01666 840456 / 841127

Didmarton Flicks in the Sticks

Victoria and Abdul Fri 9 Feb - Doors open 6:30pm for 7.30pm start. Cash bar £3 in advance £3.50 on the door

Abdul Karim arrives from India to participate in Queen Victoria's golden jubilee. The young clerk is surprised to find favour with the queen herself. As Victoria questions the constrictions of her long-held position, the two forge an unlikely and devoted alliance that her household and inner circle try to destroy. As their friendship deepens, the queen begins to see a changing world through new eyes, joyfully reclaiming her humanity

For further details call Jenny Body 01454 238358 or jenny.body@btconnect.com

Duke of Beaufort's Hunt Point to Point at Didmarton

First Sat in March - 3 Mar First race starts at 12.30. Countrywear tradestands, refreshments. Wrap up warm against the wind as the course is very exposed. £12.50 entry to the racecourse. Parking on site (chargeable).

For further details call or visit www.pointingwm.co.uk/course-details-and-maps/didmarton/didmarton-news/

Tormarton

The Crabbet Organisation Social lunch and endurance awards.

Celebrating endurance horse riding Sat 10 Feb 12.30pm £25 adult ticket £10 Young Rider (U21) www.rachaelclaridge.com and www.phoenixfieldarabians.co.uk

Compass Inn, Tormarton For further details call Rachael Claridge 01454 238942 or 07789 641014 or visit www.crabbetconvention.com/wordpress/10th-february-2018-endurance-awards-lunch/

Minety Minety Rugby Club

Mighty Minety Minions Minety Rugby Club is the exciting local rugby club for children aged 5 to 12. We are actively seeking new children to join the club and no prior experience of rugby is necessary to join in any age group. We start with five year olds with gentle games and activities, getting the children used to listening to the coaches and handling the odd-shaped ball As Mighty Minety Minions, the children move up to non-contact 'tag' rugby which involves running around getting some exercise; the children always enjoy the training sessions and we play occasional games with other clubs too. The Under 9s begin with a slow, measured introduction to Juniors' contact rugby

Sessions last an hour to an hour and a half depending on the age group. You don't need to register in advance, just turn up and if it is something your son or daughter would like to come back to after trying it out you can register anytime that day or thereafter. Clothing: children can wear shorts/tracksuit/t-shirt/trainers/football boots/ whatever they're comfortable in to start with and then purchase club kit thereafter should they want to continue to participate.

Minety Playing Fields, SN16 9QU

For further details call the club secretary, Peter McAllister, on 860281 or email PeterJMcAllister@yahoo.co.uk or visit www.pitchero.com/clubs/minetyjuniorrugbyclub/

Crudwell North Wilts Villages Flower Club

Demonstration by Jayne Morriss - "Aspects of Chelsea"

21 Feb (competition - a single flower)

Demonstration by Jane Haas: "Spring Is In The Air"

21 Mar (competition - a single flower)

Workshop tutored by Anna Steven - "Do you see what I see?" 18-Apr
Crudwell Village Hall SN16 9HB For further details call Margaret on 01285 770 639



Venue for Corporate Hire

Offering a stunning building and location, the Great Oak Hall at Westonbirt, The National Arboretum is available for weekday conferences and meetings. Hire includes a complimentary visit on the day of hire. Proceeds to the charity support the future of this national tree collection. For information and rates; www.fowa.org.uk/venue_hire, 0300 067 3301, greatoakhall@fowa.org.uk

Colerne Paws for a Cause

5K Charity Dog Walk around Colerne Airfield in aid of Cancer Research Sun 22 Apr - from 8.30am £6 adult £3 child Big Bone prize for best fundraiser Colerne Airfield

For further details visit cancerresearchukbox@outlook.com

Wotton-Under-Edge

The Electric Picture House

A refurbished local cinema run by volunteers from the local community

This month: The Darkest Hour; Paddington 2; All the Money in the World; Early Man Three Billboards outside Ebbing, Missouri; Call me by your Name; RSC Live: Twelfth Night Wed 14 Feb; NT Live: Cat on a Hot Tin Roof Thurs 22 Feb; Loveless check website for details For further details call 01453 844601 or visit www.wottoncinema.com

Wotton Bridge Club

Bridge lessons on Tuesday and Thursday evenings in the Wotton Civic Centre, from Oct onwards. £6 per lesson. Complete beginners welcome.

There is also a friendly club for relatively inexperienced players on Monday afternoons in Kingscote. For further details call Ian

Cooke on 890261 or email tresham.bridge@gmail.com

Malmesbury, Chippenham, Bath, Stroud, Bristol, Wotton

National Theatre Live

Live and pre recorded screenings

Cat on a Hot Tin Roof 22-Feb, Julius Caesar 22-Mar

Macbeth 10- May

For further details visit www.ntlive.com

Bath, Stroud, Bristol

Covent Garden Royal Opera House and Ballet @ the cinema

Live and pre recorded screenings of opera and ballet from the ROH Covent Garden

Opera: Tosca 7-Feb, Ballet: The Winter's Tale 28-Feb

Stroud Apollo, Odeon Bath and many other Cinemas

For further details call 0871 220 6000 or visit

www.roh.org.uk/cinema



Creative Hairdressing has fully qualified and experienced stylists in all hair lengths and styles, both modern and traditional.

Come and join us for that creative experience so we can create that individual look for you.

For more information or to book an appointment contact

Creative Hairdressing,
3 Market Place,
Tetbury,
01666 502949

www.creativehairdressing.co.uk



the green room

at whatley manor

NEW FOODIE EXPERIENCES IN THE GREEN ROOM



Guaranteed to encourage conversation and take you on a foodie adventure. Take a seat at the Chef's Table, where you will watch chef preparing your food in front of you.

Each event will have a maximum of 12 guests around the Chef's Table. Arrive at 7pm ready to start at 7.30pm. £45 per person unless stated otherwise.

Please see website for full schedule.

Thursday 1st Feb – Taco night Thursday 22nd Feb – Tapas night
Thursday 8th Feb – Italian night Thursday 1st Mar – Japanese night
Wednesday 15th Feb – Valentine's Thursday 8th Mar – Tapas night
Parisian night with Martin Caws £60pp

Book online, call 01666 822 888
or email reservations@whatleymanor.com

PEN & FOLD

GRAPHIC DESIGN
WEDDING STATIONERY
ADVERTISING - PRINT
LASER CUTTING

CELIA@PENANDFOLD.CO.UK

01666 880761
/penandfold
@penandfold

WWW.PENANDFOLD.CO.UK

Family or friends visiting?

LANTERN HOUSE, SHERSTON



SELF-CATERING
HOLIDAY COTTAGE
(5 ADULTS & 2 BABIES/ INFANTS)

Call 07928 809624
www.cotswolds.plus.com

Grays of Sherston

01666 840728

5 Church St, Sherston, Malmesbury SN16 0LR



♦♦♦

MOT's, servicing and advice
Tyres, air conditioning and tow bars.
Our friendly, professional village garage.

01666 840728 Local quality car care



RYALLS
Decorating
& Building
Supplies

T 01666 825198 | E sales@ryallsbs.com
ryallsdecoratingandbuildingsupplies.co.uk

Connect with us [ryallsid](#) [ryallsd](#) [ryallsd](#)
ryallsd malmesbury

Subscribe to our mailing list
for the latest weekly offers

YOUR LOCAL DECORATING MERCHANT. BIG CHOICE, GREAT PRICES!

VISIT OUR
DESIGNER PAINT
SHOWROOM IN
TETBURY



ASK US
ABOUT OUR
PRICE
MATCH

WITH OVER 20,000 COLOURS ON-SITE
WE CAN MIX OR MATCH YOUR REQUIRED COLOUR

Stockists of:

FARROW & BALL

Little Greene

PAINT & PAPER LIBRARY

MYLANDS

Frenchic

Dulux

JOHNSTONES

osmo

and many more
fine brands

**FREE
DELIVERY**

Order by 4pm for
free same day delivery.
We deliver until 9pm!

BRANCHES

RYALLS MALMESBURY

Unit 1 Park Road Centre
Park Road, Malmesbury
SN16 0BX

RYALLS TETBURY

Pooley Industrial Estate
London Road, Tetbury
GL8 8PW

HOURS

Monday - Friday 7am - 5pm Saturday 8am - 1pm

*Based on a radius of 20 miles from GL8 8PW or
SN16 0BX and a minimum order value of £25.
**Terms and conditions apply.

Tetbury Bookkeeper



Philippa Lark

Local References
phil.lark@hotmail.co.uk
01666 505824
07771 914512



VEHICLE TESTING
STATION

R&B

VEHICLE SERVICES

Est. 10 years



01454 238700

REPAIRS, SERVICING
DIAGNOSTICS, BATTERIES
TYRES, EXHAUSTS
FOR CAR, 4 X 4 & LIGHT VANS
FREE LOAN CARS AVAILABLE
**YOU CAN NOW BOOK YOUR MOT
ONLINE AT**
www.mottetbury.co.uk



COST EFFECTIVE MAINTENANCE AT A FRACTION OF DEALER PRICES
CALL RICHARD OR BEN FOR FRIENDLY, RELIABLE SERVICE

EMERGENCY RESPONSE

If you are in immediate danger call 999

The public version of Sherston's Emergency Response Plan can be found on the Sherston website:
www.sherston.org/downloads/sherston-parish-council-emergency-plan/Sherston-Emergency-Plan-REDACTED-20-11-2015.pdf

Sherston Emergency Response Coordinator

emergency@sherston.org.uk (only during an incident)

Wiltshire Council

Highways, Social Care, Emergency Transport

24hr telephone contact: 0300 456 0100

EPRR@wiltshire.gov.uk (only during an incident)

Floods: 0300 456 0105 or drainage@wiltshire.gov.uk

Useful Information

Wiltshire Council Online Gritting routes

www.wiltshire.gov.uk/parkingtransportandstreets/roadshighwaysstreetcare/gritting.htm

Utilities

ELECTRICITY – SSEPD Power track

To report a problem or for information call 105

www.ssepd.co.uk/Powertrack for a map of faults

0800 072 7282 or 0345 072 1905 from a mobile phone
 @SSEPD for updates on twitter

WATER – Bristol Water

www.bristolwater.co.uk/contact/

Emergency Helpline: 0345 702 3797 (24 Hour)

WATER – Wessex water

www.wessexwater.co.uk/Contact-us/

Emergency Helpline: 0345 600 4 600 (24 hours)

BBC Wiltshire can be heard via:

West Wilts area

(Chippenham, Devizes and Trowbridge): 104.3FM

Useful Numbers

BT fault line	0800 800151
CLARENCE (Highway complaints)	0800 232323
Cllr John Thomson	01666 840785
Malmesbury Activity Zone	01666 822533
Malmesbury Library	01666 823611
Malmesbury Police 101	(emergency 999)
Malmesbury Primary Care Centre	01666 825825
Malmesbury Secondary School	01666 829700
Malmesbury Youth Centre	0799 0908550
MP James Gray	01249 652851
Sherston Parish Council	07790 883503
Sherston Post Office	01666 840456
Sherston School	01666 840237
Sherston Village Hall (bookings)	01666 841377
Tolsey Surgery	01666 840270
Wiltshire Council	0300 4560100

Andrew James QUALITY TRAVEL

Andrew James Quality Travel prides itself on always providing a high level of service, attention to detail for any event or trip and providing perfectly presented, clean and valeted vehicles.

Its team of staff will ensure the success of any occasion, advising and assisting with the arrangements.

Whether you are planning a day out and need a mini-coach or you would like a large, luxurious, executive coach you will always find Andrew James vehicles beautifully prepared and exceptionally clean so that you can settle back and travel in comfort.



Telephone: 01666 825655

Email: ajcoaches@andrew-james.co.uk Website: andrew-james.co.uk

SHERSTON DRIVING SCHOOL

Michael Holborow A.D.I.

Tel: 01666 840327

Mobile: 07790890978

mike@sherstondriving.co.uk

FOREVER LIVING PRODUCTS

*Independent Distributor of
Aloe Vera Based Products*

Improve income or health or both. Products sold, events organised. 60-day money-back guarantee.

Beryl Clampton
 01666841201/07850623517
beryl@clampton.com

ENQUIRIES WELCOME