



The Hangover triumphs at Busy Hands Quiz!



The Busy Hands annual quiz night last month provided a fabulous night of entertainment. Quizmaster Chris Potter had teams keenly battling it out over the course of ten rounds, including some interesting challenges during the Man vs Food round (another Wotsit, anyone?), while Kev Smith kept both bidders and non-bidders amused as he turned auctioneer for the night. Meanwhile, barmen Mark Kiddell and Richard Knight were kept busy, with teams practically drinking the bar dry – just two bottles of lager and three cans of Diet Coke remained at the end of the night!

Drama built and tension filled the room as the final scores were totted up to reveal that The Hangover and Oh Sh*t! were level pegging. In a nerve-racking tie-break, The Hangover (Laura Gould, Harry Stevens, Laura Stevens and Loyd Wood) just pipped Oh Sh*t! to the post to win the highly esteemed and much sought-after Busy Hands Quiz trophy.

Apart from being a fantastically fun evening, the quiz night raised a phenomenal £3,200 for Busy Hands – thanks to all those who bought raffle tickets, donated auction and raffle prizes and turned up on the night!

Neil Forster

It is with deep regret that we report the death of Neil Forster on Wednesday 24 February, aged 77. The loss of Neil will leave enormous and irreplaceable gaps in many aspects of our village life, over which he had so very much influence. A full tribute will be published in a future edition. We send his wife, Penny, our deepest sympathy.

Village Hall Facelift

Sherston Village Hall, which is owned by the village for the village, needs some serious improvements.

Please come to a meeting at the hall on Thursday 17 March at 7.30pm, and learn about the plans for the improvements and how we intend to raise the money. We will have a short AGM at the same time and then we can share a glass of wine.

We look forward to seeing you.

Have you lost a cat?

Found last month. Tabby female neutered cat approximately three/four years old. Not micro-chipped but in good condition and obviously well loved.

If you think this could be your cat, please contact Emma on 841525 or Cilla on 840128.

Copy deadline: 10th of the previous month.
Send to editorial@sherstoncliffhanger.co.uk
or hard copy to Sherston Post Office Stores.

What's On: contact Caroline Moore on 841405 or info@sherstoncliffhanger.co.uk

The size and content of the Cliffhanger depends entirely on the amount of copy we receive from individuals and groups. So, if you feel you have something of interest, please don't hesitate to tell us. Around 400 words would be a maximum but the shorter the better and less editing would be needed.

Top tip: if you're telling us of an event coming up, write a short piece about it rather than just supply basic details or a poster. You will then get a short article published to help boost interest as well as a mention in our What's On section. Don't forget to tell us how your event went, with a photo if possible.

To advertise, contact:
advertising@sherstoncliffhanger.co.uk
James Kutchera 07985 050791

Advertising rates:
for 12 months:
1/4 page £220; 1/8 page £110; and 1/16 page £55
for one month:
1/4 page £88; 1/8 page £44; and 1/16 page £22
Inserted leaflet drop £85 max size A5

Whilst every effort has been made to ensure the accuracy of advertisements contained in this publication, Cliffhanger cannot accept any liability for errors and omissions. Inclusion of an advert should not be taken as an endorsement by Sherston Parish Council.

Please remember the Cliffhanger is delivered free to every home and business in the parish – more than 1000 copies. This and all previous editions are also available online at www.sherston.org.uk

PRINTED BY THE COMPLETE PRODUCT COMPANY, PINKNEY

Queen's 90th birthday picnic

The village hall and field has been booked for Sunday 15 June for a celebration BYO picnic from midday onwards. We would be interested to hear from groups that would like to run a tea and cake stall and activities for children during the afternoon. If you have any suggestions or are interested in being involved please contact Jill Caaney on 841380 (jill.caney@gmail.com).

Sherston Senior Club

We had our AGM on 12 January, with 20 members attending. The officers and committee are unchanged from last year, apart from Rosemary Venning, who was appointed President in the latter half of 2015.

On 26 January Rosemary Venning gave us an interesting talk on her many trips to India and Sri Lanka. Her albums were very interesting and she brought a very beautiful sari, complete with bodice and underskirt.

On 9 February, Reverend Susan Harvey told us of the work done by the Sisters of the Church in Bristol, and on 23 February, Beryl Clampton gave a talk entitled 'Your Family History'.

On 8 March, a welcome return from Colin Law with 'My life as a coach driver: part two'.

Our Spring Sale will be held on 22 March. Everyone is welcome in the British School Room, Cliff Road, at 2.00pm. There will be various stalls and also a raffle.

On 5 April, John Parsons will be showing slides to themed music, and on 19 April, we have our first outing of the year to Almondsbury Garden Centre, leaving the High Street at 10.00am – visitors welcome, please contact Helen Quirk on 840516.

Visitors are welcome to any of the meetings, £2.00 including refreshments.

Meeting of the parish council

The parish council will next meet on Thursday 10 March in the village hall at 7.30pm. All are welcome to attend and there are opportunities to raise questions and make comments. If you cannot attend the meeting but have something to raise, please contact the clerk, Sarah Wood, on 840197 or email clerk@sherston.org.uk. You can also contact the council via the response form on www.sherston.org.uk where minutes of meetings can also be read.

More Road Closures

Temporary Closure of Thompsons Hill / Widleys Road and Alderton Road

On 8 March, depending on weather conditions, these roads will be closed for two days between the hours of 7.00am and 6.00pm to allow Wiltshire Council to carry out kerbing, carriageway resurfacing / patching work, road marking and adjustment of ironworks.

The route affected is C94 (Part) Thompsons Hill / Widleys Road and C84 (Part) Alderton Road, Sherston and Luckington and the alternative route is via C94 Thompsons Hill (unaffected length) – C68 Tanners Hill – B4040 Church Street – C27 Easton Town / Ladyswood – C86 Fosse Way and vice versa.

Temporary Closure of Tetbury Road South East (Pinkney Court), Sherston

On 10 March, depending on weather conditions, this road will be closed between the hours of 7.00am and 6.00pm for five days to allow Wiltshire Council to carry out kerbing, carriageway resurfacing / patching work, road marking and adjustment of ironworks. The route affected is C27 Tetbury Road South East (Pinkney Court), Sherston Tetbury Road South East (Pinkney Court), Sherston; from its junction with B4040 Bransdown Hill.

The alternative is via C27 Tetbury Road – B4040 and vice versa.

Temporary Closure of Sopworth Lane / The Street / Didmarton Road, Luckington and Sopworth

On 3 March until 7 March 2016, depending on weather conditions, these roads will be closed daily between the hours of 7.00am and 6.00pm to allow Wiltshire Council to carry out surface dressing and associated works. The route affected is C87

Sopworth Lane / The Street / Didmarton Road, Luckington and Sopworth; from its junction with B4040 Sherston Road in a northerly direction to the county boundary.

Alternative route is via A433 – C78 Knockdown Road - Sandpits Lane - B4040 Church Street / High Street / Brook Hill / Luckington Road / Sherston Road and vice versa.

Temporary Closure of B4040 Sherston to Luckington

On 9 and 10 March, depending on weather conditions, the B4040 between its junction with Sandpits Lane, Sherston, to its junction with Sopworth Lane, Luckington will be closed daily between the hours of 7.00am and 6.00pm to allow Wiltshire Council to carry out surface dressing and associated works.

Alternative route is via B4040 (unaffected length) – C1 Wheelbarrow Lodge Road (Easton Grey to A433) – A433 – A46 – B4040 (unaffected length) and vice versa.

Temporary Closure of B4040 Sherston to Malmesbury (via Easton Grey, Brokenborough)

On 14 March until 17 March, depending on weather conditions, the B4040 from its junction with C27 Tetbury Road, Sherston to its junction with UC Parklands, Malmesbury will be closed daily between the hours of 7.00am and 6.00pm to allow Wiltshire Council to carry out surface dressing and associated works.

Alternative route is Via B4040 (unaffected length) – C68 Gloucester Road / Tetbury Hill – B4014 Tetbury Road – A433 – A46 – B4040 (unaffected length) and vice versa.

Sherston Tennis Club News

Sherston Tennis Club is preparing to clean up the courts this month so they'll be safe and moss-free ready for the start of the season. Membership costs remain the same as last year (family: £100, adults: £60; seniors: £40; and children: £20), and with a 25% discount before the end of April. For a membership form, contact Nic Riley (nic50riley@gmail.com).

There is an active men's team but we could do with a few extra players so if you're club standard and keen to play in regular league matches, get in touch with Richard Knight (richard@richardknightbloodstockagent.com). There will be club play, weekends and evenings, contact Jonathan Holman on jcharlesholman@yahoo.co.uk

Children's coaching is due to start on Saturday 23 April and run for 10 weeks. For more details on this, contact Sophie Cheetham (sophcheetham@gmail.com) or see next month's Cliffhanger or the post office noticeboard.

Sherston W.I. theWI INSPIRING WOMEN

The AGM was held on 4 February and Mo Mulrain agreed to be our President for a second year. Three new committee members joined the existing members.

2015 was a very busy year for the WI with all the centenary celebrations, and our WI celebrated its 75th birthday last October.

The new programme with the topics of our speakers is now available. Visitors are always most welcome (£3.50) and it is an excellent way to make new friends if you have recently arrived in Sherston or one of the surrounding villages.

The March meeting (3rd) is at 7.30pm in the village hall. April's meeting (7th) will be in the British School Room at 7.30pm due to the play in the village hall.

Further information: 840578

Last call for POP!



If you would like to run a POP up shop or experience in May, get your request in by Thursday 24 March – just in time for Easter! If you have already had that great idea, simply download the super short form at www.popupsherston.com or pick one up from Sherston Post Office Stores. Fill it in and get it to POP HQ. If you haven't quite nailed down your POP, don't worry, we just need a one-liner on your vague idea on the entry form – we can get more details from you later. But we do need your form by the 24 March!

For those of you still on the fence – do get involved and try something new! POPs don't have to be big and fancy – it can be a pre-booked workshop for just four people or you can go for it and have a party in your garden! Any idea goes! We have over 30 POPs already – everything from a bread-making workshop to a smoke house! Strangely though, we only have one café so if you fancy your hand at afternoon tea, get in quick!

There are so many other ideas you could try too ... Specialise in cooking one thing in your kitchen and sell it from your back door, teach a group of children to paint, hold a small music session, make the best hot chocolate in the world and sell that, run a sweet shop or bookshop to name just a few. Remember the POP shouldn't cost you a penny, just three hours of your time. For further information see our website or email Kirsty.strachan@icloud.com. So get the 13-15 May in your diary and get ready for a fun-packed family weekend!

Delivering a First Class Service



Tel 01666 840456 / 841127

Sherston 1016 - the future?



Sherston 1016 are having to assess the viability of the group. If more help is not forthcoming a decision will be made concerning its future, or even its winding-up.

The main fundraising through the year is for the Christmas Vouchers. As you may be aware this was a continuation of the Christmas food parcels that The British Legion distributed to the senior members of the community. The need and relevance of the vouchers has reduced considerably over the last 25 years although they are still appreciated.

Fundraising events that 1016 put on to cover the vouchers costs include the book sales, pancake eating competition, providing crêpes stall on Boules Day, firework displays for Didmarton and Westonbirt School bonfire nights, Sherston Bonfire Night. These fundraising events will have to stop if no individuals nor groups come forward to help.

We invite any interested individuals, groups or organisations within the village to a meeting to discuss the possibilities of these events being taken on in their own right or as support for the Christmas vouchers. Current members would offer advice during any handover.

The meeting will be held on Tuesday 12 April, in The Rattlebone.

So if you have ever wanted to contribute to village life, then now is the ideal time.

Please contact us at reply@sherston1016.org to let us know any suggestions or your likely attendance or just come along to the meeting.

Thank you

Mrs Eileen Tuck wishes to thank friends, neighbours, family and also the police for their support and efficiency following the recent robbery, when her highly sentimental jewellery and handbag containing cash and credit cards were taken.

SHERSTON DOG GROOMING

SHERSTON, MALMESBURY, WILTS SN16 0NJ

- Fully Qualified to City and Guilds level 3 with Distinctions
 - Full hydraulic dog bath and table
 - Full groom/clip prices from £25
- Full groom/wash prices from £10 • Clip nails £5
 - Situated on site with Pyke Boarding Kennels
 - Please call for appointment

Rachel Stanley

01666 840386

M 07557 654880

www.sherstondoggrooming.co.uk

Facebook: Sherston Dog Grooming



Sherston Drama Group Spring Play

**SHERSTON
||| DRAMA |||
||| GROUP |||**

At the Sign of The Crippled Harlequin

A Thriller by
Norman Robbins



Make a note in your diaries for Sherston Drama Group's Spring Play, 'At the Sign of the Crippled Harlequin' by Norman Robbins. A case of mistaken identity leads to tragedy in this engaging comedy-thriller. A diverse cast of characters are trapped by the snow in Peak Lodge, a guest house in the Peak District. But Peak Lodge has a history: the name has been changed from 'The Crippled Harlequin' to disguise the fact that the ghost of the original proprietor, who was badly injured in a stage accident, is said to haunt the place. When one of the guests is found dead, it turns out that the other guests are concealing secret histories of their own, and even the proprietors are not above suspicion. In true Norman Robbins fashion, the deepening mystery is rich with shocks and laughs as the play moves to its unexpected close.

Sherston Village Hall, 6-9 April, 7.30pm, tickets (£6.50 / £8.00 including refreshments) will be on sale from the beginning of March at Sherston Post Office Stores or from the Box Office via r.a.skeffington@gmail.com or 840092 (evenings).

Computer Problems?

Home or Business Support

We Come To You !

Fast Service, PC & Laptop Repairs, Virus Removal, Data Recovery
Wireless Networks, Broadband & Email Setup, Security and Parental Control,
Hardware and Software Sales. Microsoft Qualified, Local & Friendly.

Silverchart Systems Ltd

www.silverchart.co.uk

CALL US NOW !

01666 840531

office@silverchart.co.uk

Good Friday Workshop

All children welcome to come to the Good Friday Workshop on Friday 25 March at Holy Cross Church. The schedule of events is:

- 10.30am to 12.15pm: Activities
- 12.30pm to 1.15pm: Lunch
- 1.15pm to 1.45pm: Practice for the Good Friday Family Service
- 2.00pm: Good Friday Family Service (Everyone welcome)
- 2.30pm: Walk to Luckington where we will have a short open air service in the church car park, followed by hot cross buns, tea and coffee. Dogs welcome.

Children can spend part of the day with us or stay for the whole time. Bring a packed lunch if you are staying. Activities will be suitable for children aged from four to 11 years old who may join us without adult supervision. It is preferable if children under the age of four are accompanied by an adult who is known to them.

In order to avoid disappointment and to ensure that there are enough adults to supervise the children, it would be really helpful if you could book a place for your child(ren) in advance.

Please contact Rev. Susan Harvey on 840696 or email: susan.harvey44@hotmail.com

Sherston Auto Services



**M.O.T
Test Centre**



**Servicing & Repairs
Tyre Fitting and Wheel
Balancing
Diagnostic & Service Indicator
Reset**

All at competitive rates

Member of the Ford Blue Oval Club
Genuine Ford parts fitted

01666 840522

Unit 1, Lordswood Farm, Sherston, Malmesbury SN16 0JZ

**FREE COLLECTION & DELIVERY IN THE SHERSTON
AREA**

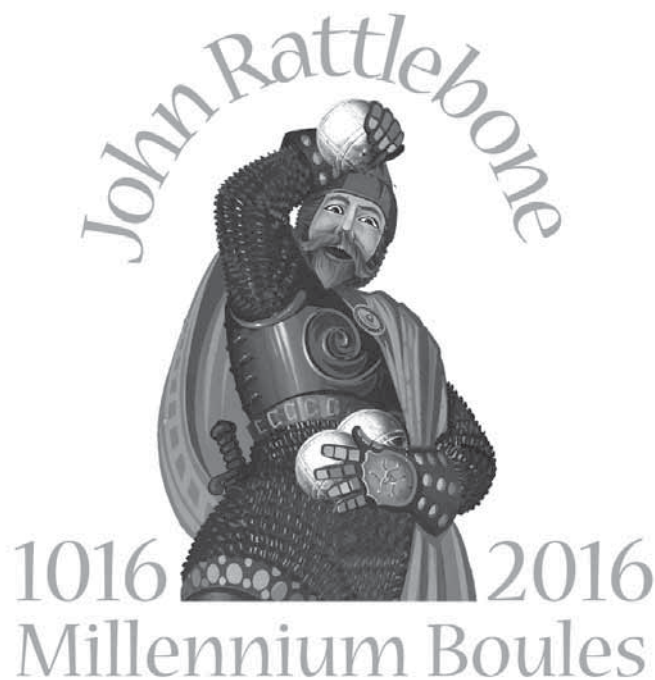
Courtesy cars available

All major credit cards accepted

OPEN:

**Monday - Friday 8am - 6pm
Saturday 8am - 1pm**

Horrible Histories 1016



In 1010 Elmer, a monk from Malmesbury earned himself the nickname 'The Flying Monk' by strapping wings to his arms and launching himself from the top of Malmesbury Abbey. He survived the experience with only the odd broken bone. This truly was a giant leap for a man. It was not unfortunately even a small step for mankind as the vast majority of those who attempted to follow in his wing-beats came to a very messy and tragic end. Elmer, however, persevered with his new-found hobby, and by 1016 had perfected his technique.

Troubled times prevailed in 1016, there were hordes of marauding Danish Vikings roaming the countryside looting, pillaging and generally being unpleasant. (How is it that you can't have a sentence regarding ancient Danes, without including the words looting, pillaging and marauding?) In order to provide the forerunner of an early warning system, Elmer took to flying sorties around the area on the lookout for the marauders.

One evening he spotted a large army of L, P & M Danes camping down for the night with the obvious intention of attacking Sherston the following morning. Elmer immediately set a course for Sherston, where he spotted John Rattlebone, the local warlord, outside his pub playing a game of boules. Elmer landed and described what he had seen to John, who unconcernedly said that he had plenty of time to finish his game before having to worry about the L, P & M Danes. This stoical attitude was adopted over five centuries later by Sir Francis Drake who insisted on finishing his game of boules before dispatching the Spanish Armada; it also allowed time for his matches to dry!

After a long, hard encounter, John Rattlebone and his army were victorious, but regrettably he succumbed to his wounds shortly after the battle, but not before starting the then fledgling tile industry. Unfortunately this conflict was a bit of a last hurrah. John may have won the battle but, later that year, the Danish King Canute eventually won the war. He is perhaps even more famously remembered for attempting to rewrite the tide tables by the power of his royal commands – not surprisingly, without any success.



Allington Bar Farm,
Chippenham, SN14 6LJ
Tel: 01249 658112

Open 7 days 9am – 6pm
Mon – Sat
& 10am – 5pm on Sundays.

Quality Local Produce

Home produced Pork, Lamb, Beef & Goat
Home Made Sausages & Burgers
Local Free Range Poultry
All available daily from our Butchery

Locally made Preserves, Chutneys & Pickles

Somerset Jersey Organic Milk & Cream
Local Cheeses & Home Cooked Meats
Extensive range of local Ice Cream
Locally Grown Fresh Fruit & Vegetables
Homemade Cakes & Pies
and many more local ingredients



Noah's Ark Day Nursery

Providing a nurturing and stimulating environment for babies and children aged 3 months to pre-school.

Telephone: 01666 840105
E Mail: noahsarknursery@aol.com

Fifty years after the battle of Sherston we were again invaded and conquered. The worthy burghers of Sherston were busy swatting up their French, learning how to play the Norman version of boules and preparing their entry for the Domesday Book. It was 1066, the rest, as they say, is history!

As for Elmer, he wished to escape from the currently unsettled situation. He resigned from the monastery, took off and headed west eventually landing in what is now the USA. He maintained his interest in flying, and also his love of whacky names. These traits were passed on to his descendants, two of whom, Orville and Wilbur, just under a thousand years after his first historic flight, perfected Elmer's flying machine and in 1903 they added an engine. Now that really was a giant leap forward for mankind!

As part of the activities surrounding the re-enactment of the battle of Sherston, and to celebrate John Rattlebone's epic last game of boules, we will be holding a boules competition on the evening of Friday 24 June. The format will be a round robin and will hopefully involve as many teams as possible. If you would like to be involved, please contact Sue McKechnie on either 840601 or susannemckchnie@hotmail.co.uk or Tony Towle on either 840574 or atowle@btinternet.com

Tony Towle

Foxley Plumbing & Heating

Oil Boiler Installation, Servicing and Repairs
Oil Tank Replacement
Heating Installation and Repairs
Bathroom Installations
Unvented Cylinder Systems
No Job Too Small

Tim Hibbard

Malmesbury (01666) 822863

Mobile 07966 462202

Email foxleyph@btinternet.com



**FOREVER
LIVING
PRODUCTS**



**Independent Distributor of
Aloe Vera Based Products**

Improve income or health
or both. Products sold,
events organised. 60-day
money-back guarantee.

Beryl Clampton
01666841201 / 07850623517
beryl@clampton.com

ENQUIRIES WELCOME

Prestige Computer Services Ltd

Computer Systems Sales and Repair

- Over 28 Years Experience
- PC Laptop & MAC Computer Systems
- New XP PRO Vista Win 7 & Mac Systems
- Slow and Sluggish Computers Made Fast Again
- Systems Up Grades & Software Installation
- Data Recovery
- Hard Drive Duplication
- Home and Office Service Calls
- Virus removal & Anti Virus Software Installation
- Broadband & Wireless Internet Connections
- Email Account & Access setup
- Free Off Road Customer Car Parking

Tel: 01666 824031 - 825620

Unit 4 Park Rd Centre Malmesbury SN16 0BX

Andrew James QUALITY TRAVEL

Andrew James Quality Travel prides itself on always providing a high level of service, attention to detail for any event or trip and providing perfectly presented, clean and valeted vehicles.

Its team of staff will ensure the success of any occasion, advising and assisting with the arrangements.

Whether you are planning a day out and need a mini-coach or you would like a large, luxurious, executive coach you will always find Andrew James vehicles beautifully prepared and exceptionally clean so that you can settle back and travel in comfort.



Telephone: 01666 825655

Email: ajcoaches@andrew-james.co.uk Website: andrew-james.co.uk



JAMES PYLE & CO.

**& OTSWOLD & COUNTY
Sales and Lettings**

Local Knowledge National Coverage

Call us in complete confidence for
a **free valuation** and advice
on all property matters

01666 840 886

jamespyle.co.uk

interested@jamespyle.co.uk

The Old School, High Street, Sherston



*You'll feel at home with
James Pyle & Co*

News from Holy Cross Church

The big news this month is the launch of our new service 'Worship Together' on Sunday 13 March at 9.30am. I'm very excited by this creative opportunity for Holy Cross, extending what the church offers and its connection with different age groups in the village. This service will:

- meet in our lovely spacious North Aisle;
- be preceded by breakfast at 9.15am - great for families!;
- draw on the best of modern and traditional music;
- have an informal, involving but structured style;
- be a time when all ages can worship together, and during the talk there will be a children's group and a crèche area;
- happen every second Sunday of the month at 9.30am for about $\frac{3}{4}$ of an hour; and
- complement our existing services – the 8.00am service will be the Communion on that day.

Everyone is welcome. If you haven't been to church recently you'll find Worship Together an interesting change, so do come along and see what's happening at Holy Cross!

In other news, our Holy Week services include a simple said Compline on Tuesday 22 March at 8.00pm and a school service on the morning of Maundy Thursday. In the evening, we commemorate the Last Supper with a Communion service at

7.30pm, followed by the stripping of the altars and vigil, recalling the disciples watching with Christ in Gethsemane.

Good Friday begins with a children's workshop from 10.30am in Holy Cross. This ends with a walk to Luckington where at 3pm the outdoors service is held followed by hot cross buns (see page 5 for more details).

A new event this year is 'A Space for Waiting' in the Lady Chapel of Holy Cross at 4.00pm on Holy Saturday. This day can easily be taken up with rushing around making preparations for Easter, so it is good to have space and time to reflect. Finally, on Easter Day itself, Holy Cross has the usual service pattern of an 8.00am Communion, 9.30am Family Communion and 6.00pm Evensong.

The Annual Meeting is on 19 April at 7.30pm. Finally, we plan to run an Alpha course weekly on Wednesdays, starting on 13 April at 7.30 pm. Please contact me or Henny (837778) for more information.

With best wishes for Lent, Holy Week and Easter
Christopher Bryan, Rector of the Gauzebrook Group

Charming House to rent in historic Southern France

16 Rue Montmorency is a charming three-bedroom town house located in the heart of Pezenas, a beautiful medieval market town. The house can accommodate 6 people comfortably and was built in the 18th Century. Constructed from ancient stone (probably from the neighbouring castle ruins!) it comes complete with authentic touches such as decorative wrought iron railings and sky blue wooden shutters which are a decorative theme running through Pezenas.

Light and airy with stunning views

Number 16 is situated on the apex of a row of town houses, and so has light on three sides as well as a roof terrace with stunning views over the old town and Languedoc countryside. Rue Montmorency is a stone's throw from the bars and bistros of the vibrant old town.

Please see the website for more details www.realsouthoffrance.co.uk

Or call Jennie Lamont on 07985443863

Quote Cliffhanger on any enquiry



Creative Hairdressing has fully qualified and experienced stylists in all hair lengths and styles, both modern and traditional.

Come and join us for that creative experience so we can create that individual look for you.

For more information or to book an appointment contact

**Creative Hairdressing,
3 Market Place,
Tetbury,**

01666 502949

www.creativehairdressing.co.uk



Moviola@ Grittleton Village Hall

Wednesday 30 March: The Lady in the Van [12A]

Maggie Smith plays Miss Shepherd, a bag lady who combines patrician grandeur with iron determination, and is often guided in matters – such as where to park her old yellow van – by the Virgin Mary. Her presence in bohemian Camden Town is tolerated by neighbours rich with liberal guilt, who bring her the occasional crème brûlée. When yellow lines arrive, God advises Miss Shepherd to take advantage of Alan Bennett's (Alex Jennings) off-street parking, and she stays for 15 years, as does a whiff of wet newspaper, onions, and worse. The Times

Tickets £6 from Lesley on 01249 783157 or email l_palmer@btinternet.com Doors open 7.00pm, programme starts at 7.30pm <http://www.moviola.org/http://www.grittleton.info/>

Future dates for your diary
27 April: Brooklyn

Beautiful two bedroom holiday cottage for rent in Cornwall

The Boathouse is an idyllic cottage on the spectacular Fowey River Estuary, just two miles from Fowey and a step away from the water's edge.

A converted boathouse and lime kiln, the cottage is one of the oldest buildings in the picturesque village of Golant.

Comfortable and welcoming with magnificent views across the river, there is a log fire for cosy winter holidays and a private terrace ideal for spring and summer barbecues.

Sleeps Four + Cot

Please see the website for full details:
www.theboathousecornwall.co.uk/

or alternatively call / email

+44 (0)7980 014 471

info@theboathousecornwall.co.uk

Sherston Market

The next market is on Saturday 26 March at Sherston Village Hall from 10.00am to 2.00pm. The café will be serving up some enticing and delicious food to tempt you – either to eat in or to take away. Not only will we have our very popular vegetarian curry with naan bread but also our sought-after bacon butties, as well as a delicious homemade soup.

At all markets at least one free stall is offered for a charity or voluntary group to raise funds. Anyone interested in running such a stall should please use the contacts below. All these stalls have done well to date so don't be shy in booking one! March's stall is in aid of Riding for the Disabled.

For those on Facebook there is an active Sherston Market page with lots of information about our stallholders and their products. Please also visit our new website www.sherstonmarket.co.uk which lists details of which stallholders are attending the next market.

If you are a local maker, baker, grower or producer and are interested in taking a stall please either use the contact form on the website, phone 07887 814843 / 07769 613627 or email info@awkwardsquad.co.uk



Shear Class & Serenity

Uni-Sex Hair Salon and Beauty Salon
Sherston 01666 840840



**Tuesdays - Saturdays
Late Opening and Reduced Rates for
Senior Citizens on Thursdays**

*For all your Hair & Beauty
Treatments
Appointments not always necessary
please call in*

MATRIX

BIOLAGE

STANTON COMPUTER SERVICES We come to you!

PC repairs
Upgrades
Installation of new hardware
Wired and wireless networking
Internet and email set up and coaching
Virus cleansing

Please call Nick Greene on 01666 837850
Mobile 07887 721396
Email: nick@computerfixer.org.uk

Date for your diary

On Friday 6 May in Sherston Village Hall at 7.30pm, Rural Arts Touring presents Stomp'n' Dave and his Bluegrass Band. Tickets £10 available nearer to the date. The band, who have performed at lots of Festivals including Glastonbury and Bestival, play classic bluegrass and old-time music so just right for a great night out. There will also be a licensed bar.

Art Display in Shear Class

There is always a small display of local artists' work in the entrance area of Shear Class. You can pop in to see it even if you are not attending the salon. The display for March and April shows work by Gloria Pugh, who is a member of Bath Textile Artists and lives in Luckington. She has also been co-leader of Sherston Young Craft Group for many years, so members, past members and their parents might be interested to see what Gloria does in her 'spare' time!

Small Ads

You can now advertise items for sale or wanted in the Cliffhanger including services required such as gardening or cleaning. Cost is £2 for up to 20 words. Copy should be in paper form and put through the letterbox at 37 High Street by the 15th of the month together with £2 in cash. All monies raised will be donated to charity. Private advertisers only please – no businesses.



SHERSTON CONGREGATIONAL CHURCH Meeting in the British School Room

March Services

6th March 4.00pm	All Age Service
13th March 11.00am	Communion Service
20th March 11.00am	All Age Service – Pam Dix
27th March 11.00am	Easter Sunday Service
In addition, for Easter Week:	
24th March 7.30pm	Maundy Thursday Communion at Holy Cross Church, Sherston
25th March 9.00am	Good Friday Prayer Service

Optimum Mobility

of Malmesbury



Also walking aids, bathing & household aids
The Old Dairy, Pinkney Park, Near Sherston
01666 840060
www.optimummobility.co.uk

Advance notice: Open Gardens Weekend

Sherston Open Gardens Weekend will take place this year on 18/19 June. All proceeds go towards the upkeep of the church. If you would be willing to open your garden or want more information, please get in touch with Heather Martin heather@geoffmartin.plus.com or phone 840375.

Are you researching your family?

The Bristol and Avon Family History Society are making two visits - one to the National Archives at Kew and the other to the 'Who Do You Think You Are' exhibition at the NEC Birmingham.

Kew is £25, including coach - no entry fee - 15 March.

Who Do You Think You Are is £35, including coach and entrance - 9 April.

Pick up points are local and I am going to the April outing so I can give anybody a lift.

If you are interested or would like more information please ring me on 841201 or email me beryl@clampton.com

McTimoney Chiropractic Tolsey Surgery, Sherston

A gentle & effective treatment for
back, neck & shoulder pain,
migraines, sports injuries & more

Emma Newby BSc MMCA

01666 841 402

www.mctimoneychiro.co.uk

Lantern House - Sherston
5* holiday cottage
www.cotswolds.plus.com



Family & friends visiting?

Sleeps 5 + Nursery for baby

T. 01666 505807

M. 07928 809624

E. lanterhouse@cotswolds.plus.com

HAIR BY JULES

High Quality Mobile Hairdressing service for Sherston and the surrounding villages, providing all your needs, even wash basin and towels.

Wet Cuts £15.00
Cut & Blow dry £33.00

Senior Citizens on any day:
Shampoo & Set £12.50
Cut Shampoo & Set £24.50

Perms: Half Head £35.00 including S&S or Blow dry
Full Head £45.00 including S&S or Blow dry

Colours, T, Sec, Full Head Roots.. Full Head Foils ...Gents Cuts..

I would love to hear from you...

Please call JULES 07581790110

or email yewtree04@btinternet.com

Trek Cambodia for RUH Cancer Care!

Have you ever wanted to take on an exhilarating challenge and raise funds for a charity that is close to your heart? If so, then now is your chance. The Forever Friends Appeal, the primary charity for Bath's Royal United Hospital are looking for 18 adventurous people from across Bath, Somerset and Wiltshire to join their 95km trek across Cambodia which will journey through the ancient city of Angkor Wat – known as the realm of the gods.

The Appeal team hope that in November 2016 a team of 18 fundraisers will take part in this experience of a lifetime – at the same time as raising significant funds for the charity. The current focus of The Forever Friends Appeal is the RUH Cancer Care Campaign – to raise a minimum of £8.5 million towards the build of a pioneering new Cancer Centre for the RUH. By signing up to join the trek, people will be helping to transform care for patients with cancer and their families at the RUH.

Event & Community Officer for The Forever Friends Appeal, Emily Lynch comments: 'This is the Appeal's third annual overseas trek where participants can choose to fundraise for the RUH Cancer Care Campaign or an RUH ward or department of their choice. We're hoping that this year's Trek to Cambodia will be our most successful yet! Our trek will start in the beautiful Siem Reap and take you through dazzling green rice paddies, jungles dotted with Buddhist temples and ruins. Trekkers will be immersed in ancient Khmer tradition, will discover the beauty of the sacred Kulen Mountain and have the opportunity to explore the jewel in Cambodia's crown, Angkor Wat.'

If you have a passion for culture, a great sense of adventure and the desire to do something challenging to help The Forever Friends Appeal achieve its goal, sign up today to join their team. For more information, visit www.foreverfriendsappeal.co.uk or call the events team on 01225 825823.

Last year's India Trekkers (pictured here at the foothills of the Himalayas) managed to raise over £25,000 for the RUH Cancer Care Campaign



**Martin Ward &
Andy Walden**
Sherston, Malmesbury
Fencing, hedge
cutting, clearance
& other work considered



Fully insured
07810 136778

The Baraka Catering Company Ltd.
www.barakacatering.co.uk



Catering for ALL events large & small
Delicious Homemade Canapés
Supper Parties
Gourmet Barbeques
Weddings, Birthdays & Christenings

Please don't hesitate to call Camilla on 07734 251 075
Or email camilla@barakacatering.co.uk
with any orders, questions etc.

MARY DERRICK SWIMMING LESSONS FOR CHILDREN

AT WESTONBIRT SPORTS CENTRE

NOW OFFERING LESSONS MON, TUES, WED & THURSDAYS AFTER SCHOOL

We have classes for all abilities:-
Pre-school classes (3-5 years) have the teacher in the water, parents do not have to get in unless necessary!

Beginners classes have the teacher in the water. Two levels of improver classes & also lane swimming for advanced improvers.

All teachers are fully qualified & CRB checked. We follow the ASA award scheme & have termly "badge nights" for distance awards. We also run personal survival classes, bronze, silver & gold challenge awards & also rookie lifeguard courses. Holiday courses also available.

All lessons run half termly & are ongoing so no need to keep booking in every term!

TEL. 01666 841133 or 077 144 252 01

WE HAVE BEEN ESTABLISHED IN THE MALMESBURY AREA FOR 20 YEARS
ASA SWIM SCHOOL MEMBER

www.maryderrickswimming.com

Easton Square



It was with great sadness that the magnificent sycamore tree in Easton Square had to be felled after major storm damage during Storm Imogen in February. Many current and past villagers have shared fond memories of growing up with the tree.

Growing in a field originally owned by a local brewery, the tree became the focal point of the Easton Square housing estate built around it in the late 1940s.

The tree is thought to have been planted as a reserve for the Jubilee tree opposite the Church which was planted to commemorate Queen Victoria's Diamond Jubilee in 1897.

Green Square Group is responsible for the maintenance and care of the tree which is protected by a Tree Preservation Order. According to the Wilts and Gloucester Standard, Ian Yates, maintenance service manager, said:

sycanomore



'The serious damage to this tree caused by Storm Imogen also exposed that, sadly, a significant fungal disease had become established.

'After careful consideration we had to conclude the only viable option was to fell the tree. This work had to commence immediately to protect the public, and was carried out following liaison with the Council.

'We will now work with the council and local residents to choose suitable replacement trees.'

A large part of the trunk has been left with a view to possibly creating a bench for the square, this would look great under the new trees that are promised.

A few comments from social media:

It holds memories for a lot people who used to play there, even kids of today,

That tree was 63 years of my life. Really sad.

The square is never going to look the same.



garden design, construction
and aftercare
bespoke garden buildings
and logstores

sagegardendesign.co.uk email:chris.sagegardendesign@gmail.com

Christopher Frost
Willows, Brook End
Luckington, SN14 6PJ
01666 841175
07973 736912



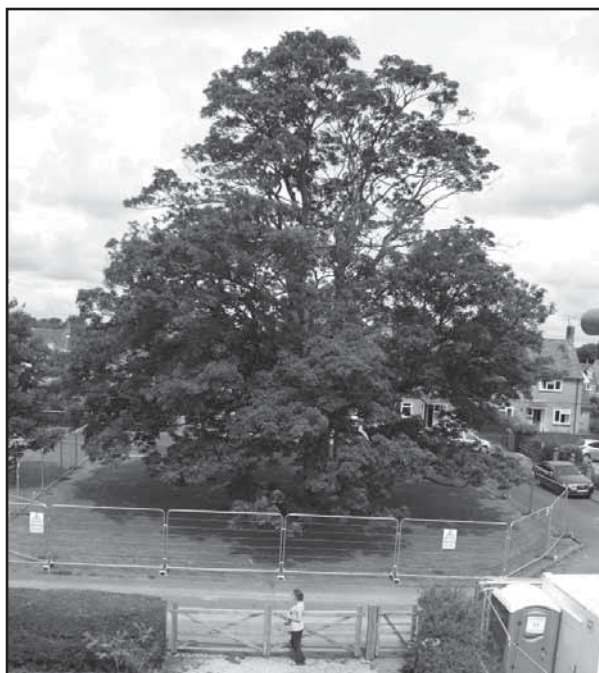
Rabbit and Squirrel Control

For a professional service call

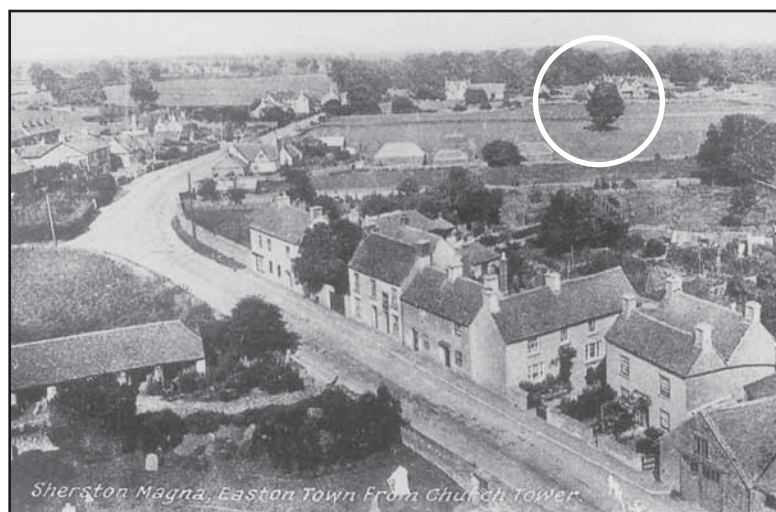
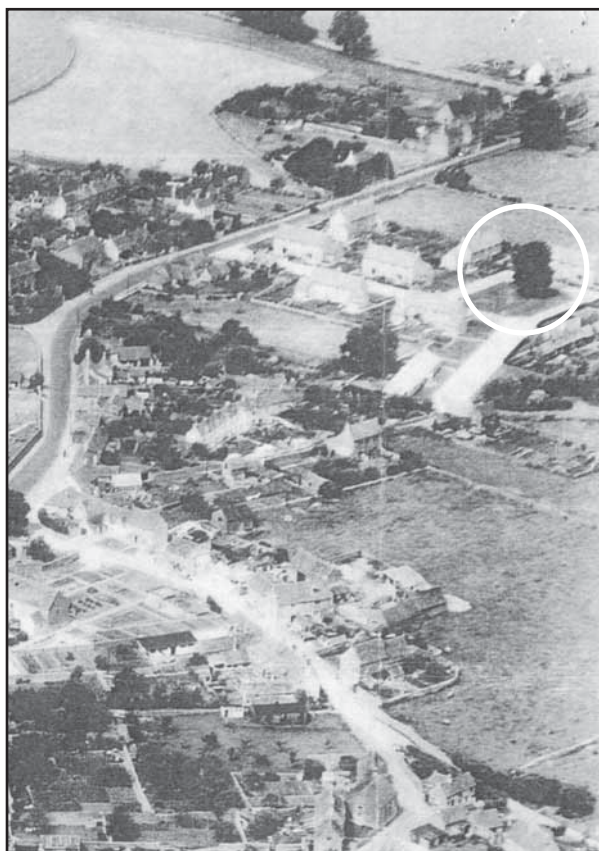
07766 132934

01285 770968

Fully Insured and references available



2014

*c1915, the tree growing in the open field**1950s Easton Sqaure just built**1980s, T H White in the middle distance**2000s,*

Grays of Sherston 01666 840728

5 Church St, Sherston, Malmesbury SN16 0LR

♦♦♦

MOT's, servicing and advice
Tyres, air conditioning and tow bars.
Our friendly, professional village garage.

01666 840728 Local quality car care



L.P. Electrical
Reliable & Friendly service
Free Estimates for all your electrical needs
Domestic, Industrial and Commercial

Safety checks, Rewires, Extensions, Extra lighting and sockets, Fault finding, Test and Inspecting, Fuse board replacements, etc

Fully insured and guaranteed
Over 11 years experience
Call Les on 07890 541492



Women's title retained



*Daughter v Mum:
Ella beating mum Kati in the ladies' heat.*



Ladies' champion Laura Ferrier (left) introduces some decorum by using a knife and fork to prepare her pancakes



Rory Sweet gets down to business with his plate of pancakes. He liked them with sugar, aptly enough!



Champion Nicky Wilkins (centre) shares a joke with runners-up Paul Filmer (left) and Tom Langley (right).



Alex tucks into his pancakes in the boys' heat.

The Rattlebone was extra busy on the evening of Shrove Tuesday for the annual Sherston 1016 Pancake Eating Competition. Around twenty-five contestants of all ages took part, with the aim of swallowing down their pancakes in the shortest possible time. A total of over 120 pancakes were prepared expertly by chef Roger and his team, with the high-quality ingredients having been donated by generous local businesses: flour by John Lister of Shipton Mill at Long Newnton, free range eggs by Gail and Bruce at Sherston Eggs, and lemons by Andrew at Tucks Farm Shop.

This year's proud winner of the junior competition was Cormac Pritchett, for the second year running. The adult competition saw new entrant Nicky Wilkins take the certificate.

Champion for the children's competition was Cormac Pritchett (11), for the second year running, closely followed by Will Hulme (14) and Jack Gibb (10), who tied for second place.

It may not be a surprise to readers that the boys'

competition was one of the most popular of the evening: so much so that it had to be run over three heats!

Laura Ferrier was the winner of the ladies' competition, again for the second year running, with second and third places going to Kati Moriarty and Minnie Hulme respectively.

The men's part of the competition was very popular, with a total of ten entrants. There was an international feel, with competitors from Argentina and Italy taking part. The winner was Nicky Wilkins, followed closely by Tom Langley and Paul Filmer. Nicky's time in his first heat was an amazing fifty seconds, during which he devoured his four pancakes with gusto!

Winner of the pancake-inspired raffle was Natalie Stevenson.

The organisers from Sherston 1016 thank all participants for taking part, all the spectators for adding so much to the atmosphere, Jason and the staff at the 'Bone for all their help, and of course, the aforementioned businesses for their donations.

Wiltshire council reviewing 41, 36 and 37 buses

Wiltshire council wants to save money and is reviewing its Local Transport Plan Public Transport Strategy and bus services supported by the council. Services from Sherston that may be affected are the:

41: Malmesbury-Sherston-Yate: reduce to 2-3 buses a day (currently 4-6 buses)

36: Once a week on Friday to Chippenham: reduce further (cancel)

37: Once a week on Wednesday to Bath: reduce further (cancel).

The council are keen to hear the views of bus users, residents and other interested people to help develop a new Public Transport Strategy. To complete the survey online visit:

http://consult.wiltshire.gov.uk/portal/ltp/wiltshire_local_transport_plan_-_public_transport_strategy_review.

Pull out this section of the Cliffhanger, complete the survey and return to the parish clerk at 23 Cliff Road, Sherston by 29 March 2016.

Review of Passenger Transport January 2016

Public consultation on the future provision of subsidised bus services in Wiltshire

This survey is part of the Council's Review of Passenger Transport (excluding taxis and trains) which seeks to consult widely on the actions, options, opportunities and developments around bus and community transport. It is not a detailed consultation on particular routes, timetables or destinations. We are keen to hear the views of residents, stakeholders and other interested parties.

Although passenger transport makes a strong contribution to the priorities that underpin Wiltshire Council's Business Plan, a key challenge in recent years has been how the service can continue to achieve these priorities in the face of growing pressures on local authority spending. This review is therefore being undertaken to help identify savings from passenger transport budgets.

Please note this is a consultation only about subsidised bus services, which are those services that are not viable for a bus company to run without Council funding. The majority of bus services that run within Salisbury and between major towns are operated as a commercial venture by the bus companies themselves without Council funding, and so are not the subject of this review.

This review will be accompanied by continuing work to identify savings in other areas of the Council's passenger transport spending. Further information on the review can be found at consult.wiltshire.gov.uk/portal

**Please return completed surveys to the parish clerk by 29 March
23 Cliff Road, Sherston**

ABOUT YOU?

Any information provided is governed by the Data Protection Act 1998 and will be treated as strictly confidential.

1. Are you?

Male Female Prefer not to say
☐ ☐ ☐

2. What is your age range?

☐ under 18 ☐ 35-44 ☐ 65-74
☐ 18-24 ☐ 45-54 ☐ 75-84
☐ 25-34 ☐ 55-64 ☐ 85+

3. What is your post code? This will be used to map responses only.
Please use capitals and a space such as in BA14 8JN _____

4. Do you consider yourself to be disabled in any way?

Yes ☐ No ☐

5. Is your mobility impaired in any way?

No ☐ Yes due to a disability ☐ Yes due to my age ☐

6. Do you own or do you have access to drive any car, van or motorcycle?

Yes ☐ No ☐

YOUR USE OF BUSES IN WILTSHIRE

7. How would you describe your use of bus services in Wiltshire?

Please tick the statement(s) closest to your view.

	At least 5 days a week	2-3 times a week	Once a week	Once or twice a month	A few times a year	I never use the bus
To get to work	<input type="checkbox"/>	<input type="checkbox"/>	<input type="checkbox"/>	<input type="checkbox"/>	<input type="checkbox"/>	<input type="checkbox"/>
To go shopping	<input type="checkbox"/>	<input type="checkbox"/>	<input type="checkbox"/>	<input type="checkbox"/>	<input type="checkbox"/>	<input type="checkbox"/>
To visit family or friends	<input type="checkbox"/>	<input type="checkbox"/>	<input type="checkbox"/>	<input type="checkbox"/>	<input type="checkbox"/>	<input type="checkbox"/>
To get to a doctors or medical appointments	<input type="checkbox"/>	<input type="checkbox"/>	<input type="checkbox"/>	<input type="checkbox"/>	<input type="checkbox"/>	<input type="checkbox"/>
To get out and about	<input type="checkbox"/>	<input type="checkbox"/>	<input type="checkbox"/>	<input type="checkbox"/>	<input type="checkbox"/>	<input type="checkbox"/>

8. Do you use a concessionary bus pass? Yes ☐ No ☐

The concessionary fare scheme costs Wiltshire Council around £4.3m per year. Please note Wiltshire Council cannot introduce a small additional charge per journey for concessionary bus pass holders, or an annual administration charge for each pass as this is not allowed by Government legislation.

BUS SERVICES

Last year Wiltshire Council spent £5.1 million on subsidising local bus services. These are services that could not be operated without a council subsidy, and account for around half of total bus mileage in the county. The highest proportion is spent on 'regular rural' services. These operate between two market towns, linking several villages along the route. Bus services in towns account for the next highest proportion of expenditure, followed by strategic town to town services, evening services, infrequent shoppers buses and Sunday services.

9. Bus services are currently grouped into a number of categories. Given the economic, social and environmental role that buses can play but also the Council's need to make substantial cost savings, which of the following categories do you feel it is most important for the Council to support?

	Very Important	important	Neither important nor unimportant	Unimportant	Very unimportant
Strategic network routes linking the main towns within and beyond Wiltshire	<input type="checkbox"/>	<input type="checkbox"/>	<input type="checkbox"/>	<input type="checkbox"/>	<input type="checkbox"/>
Town services (running entirely within a town or city linking the main housing areas and the centre)	<input type="checkbox"/>	<input type="checkbox"/>	<input type="checkbox"/>	<input type="checkbox"/>	<input type="checkbox"/>
Evening services (those which operate after 7pm)	<input type="checkbox"/>	<input type="checkbox"/>	<input type="checkbox"/>	<input type="checkbox"/>	<input type="checkbox"/>
Sunday and Bank holiday services	<input type="checkbox"/>	<input type="checkbox"/>	<input type="checkbox"/>	<input type="checkbox"/>	<input type="checkbox"/>
Rural regular services (linking smaller towns and rural areas, generally with at least 4 journeys in each direction on 5 days a week)	<input type="checkbox"/>	<input type="checkbox"/>	<input type="checkbox"/>	<input type="checkbox"/>	<input type="checkbox"/>
Rural infrequent services that serve rural areas generally on only certain days of the week	<input type="checkbox"/>	<input type="checkbox"/>	<input type="checkbox"/>	<input type="checkbox"/>	<input type="checkbox"/>

OPTIONS FOR SAVINGS

The Council has consulted with stakeholders and partners and used its own experience and that of other councils to develop a number of options to make savings. As there will be many combinations of bus service changes possible the Council has not determined what these may be and is asking for responses to the options to guide their decisions. You can refer to the map, table and documents on the Council's website (or in a library/main council office) showing which routes would be affected.

OPTION 1 - WITHDRAW FUNDING FOR ALL SUPPORTED EVENING SERVICES

Most evening buses in Wiltshire (those running after around 7.00pm) are funded by the Council. 11 routes are supported, with 330,000 passenger journeys a year subsidised by the Council. Withdrawal of funding for these services would save around £639,000 a year.

10. Given the level of subsidy and the numbers who use this service would you support the Council looking at this area to find savings?

Yes ☐ No ☐

11. If the Council was to remove the subsidy for evening services which meant that they were not able to continue to operate, how would this personally affect you?

- ☐ It wouldn't affect me at all, as I rarely, if ever use such a service
- ☐ I might be affected but could probably make alternative arrangements
- ☐ I would be affected by this quite a lot
- ☐ This would have a big impact on me personally

OPTION 2 - WITHDRAW FUNDING FOR ALL SUPPORTED SUNDAY AND PUBLIC HOLIDAY SERVICES

Most buses in Wiltshire that run on Sundays and public holidays are currently funded by the Council. 8 routes are supported, with the Council subsidising around 145,000 passenger journeys a year. Withdrawal of funding for these services would save around £165,000 a year.

12. Given the level of subsidy and the numbers who use buses on Sundays and on public holidays would you support the Council looking at this area to find savings?

Yes ☐ No ☐

13. If the Council was to remove the subsidy for Sunday and public holiday services which meant that they were not able to continue to operate how would this personally affect you?

- ☐ It wouldn't affect me at all, as I rarely, if ever use such a service
- ☐ I might be affected but could probably make alternative arrangements
- ☐ I would be affected by this quite a lot
- ☐ This would have a big impact on me personally

OPTION 3 - REDUCE THE HOURLY SERVICES MON-FRI TO A TWO HOURLY SERVICE ON THE STRATEGIC BUS NETWORK

The strategic bus network links the market towns and larger villages in Wiltshire with the nearest large town, with services operating at least every hour on Mondays to Fridays. Ten routes are part-funded, and three routes (Malmesbury-Swindon, Malmesbury-Chippenham and Devizes-Salisbury) are entirely funded by the Council. The Council subsidises around 460,000 passenger journeys a year. To reduce these services to a two hourly frequency during the daytime would save around £430,000 a year.

14. Given the level of subsidy and the numbers who use this service would you support the Council looking at this area to find savings?

Yes ☐ No ☐

15. If the Council was to reduce these services how would this personally affect you?

- ☐ It wouldn't affect me at all, as I rarely, if ever use such a service
- ☐ I might be affected but could probably make alternative arrangements
- ☐ I would be affected by this quite a lot
- ☐ This would have a big impact on me personally

RURAL BUS SERVICES

The Council currently spends over £2 million a year subsidising services on 57 rural routes. Half of these are regular services providing up to 4 or 5 buses a day in each direction linking the villages to their nearest town, while the remainder are infrequent services usually operating only on certain days of the week to a local market. The Council subsidises around 960,000 passenger journeys a year on rural bus services.

OPTION 4 - REDUCE RURAL BUS SERVICES TO 2-3 BUSES A DAY ON REGULAR ROUTES AND WITHDRAW MOST OF THE INFREQUENT SERVICES EXCEPT THOSE THAT ARE THE ONLY SERVICE TO A GROUP OF VILLAGES.

As the savings would depend on using one bus and driver to operate two routes, journeys would not necessarily be conveniently timed. This option would save around £1.19 million a year.

16. Given the level of subsidy and the numbers who use this service would you support the Council looking at this area to find savings?

Yes ☐ No ☐

17. If the Council was to reduce the subsidy for rural services which meant that they were able to continue to operate but at a much reduced frequency - say only 2 to 3 journeys a day - how would this personally affect you?

- ☐ It wouldn't affect me at all, as I rarely, if ever use such a service
- ☐ I might be affected but could probably make alternative arrangements
- ☐ I would be affected by this quite a lot
- ☐ This would have a big impact on me personally

TOWN BUS SERVICES

The Council currently spends £1.01 million a year to fund the provision of hourly bus services linking the housing estates in Bradford on Avon, Calne, Corsham, Devizes, Melksham, Trowbridge, Westbury and Warminster with the centres of those towns. It also part-funds the provision of such services in Salisbury, Chippenham and Marlborough at times when the bus companies would not otherwise run them. Around 650,000 passenger journeys a year are made using these services.

OPTION 5 - REDUCE TOWN BUS SERVICES TO 2-3 BUSES A DAY. EXISTING BUSES USED BY SCHOOL PUPILS WITHIN WARMINSTER, DEVIZES, BRADFORD ON AVON AND MELKSHAM WOULD BE RETAINED

As the savings would depend on using one bus and driver to operate two routes, journeys would not necessarily be conveniently timed. However, buses used by pupils living within Warminster, Devizes, Bradford on Avon and Melksham to travel to/from school would be retained.

This option would save around £460,000 a year.

18. Given the level of subsidy and the numbers who use this service would you support the Council looking at this area to find savings?

Yes ☐ No ☐

19. If the Council was to reduce the subsidy for town services which meant that they were able to continue to operate but at a much reduced frequency - say only 2 to 3 journeys a day - how would this personally affect you?

- ☐ It wouldn't affect me at all, as I rarely, if ever use such a service
- ☐ I might be affected but could probably make alternative arrangements
- ☐ I would be affected by this quite a lot
- ☐ This would have a big impact on me personally

OPTION 6 - WITHDRAW ALL FUNDING FOR ALL COUNCIL SUBSIDISED SERVICES

Around half of all bus services in Wiltshire are subsidised by the Council, and in total these subsidised services carry over 2.5 million passenger journeys a year. Withdrawing all funding for these services would save £5.1 million a year.

20. Given the level of subsidy and the numbers who use this service would you support the Council looking at withdrawing all bus service funding to find savings, if a small proportion of the savings were reallocated to community transport initiatives, health transport options, etc?

Yes ☐ No ☐

21. If the Council was to withdraw the subsidy for all services how would this personally affect you?

- ☐ It wouldn't affect me at all, as I rarely, if ever use such a service
- ☐ I might be affected but could probably make alternative arrangements
- ☐ I would be affected by this quite a lot
- ☐ This would have a big impact on me personally

22. In order to keep as many of the existing subsidised services running as possible Wiltshire Council is investigating if other organisations, individuals and communities might be able to fund, or even operate elements of some bus routes. This might for example include paying for services in villages on routes or helping to fund extra journeys. Given this, which of the following statements do you agree with?

	Agree	Neither agree nor disagree	Disagree
This is a great idea	<input type="checkbox"/>	<input type="checkbox"/>	<input type="checkbox"/>
If there aren't enough passengers to enable a bus service to run without subsidy then it should go.	<input type="checkbox"/>	<input type="checkbox"/>	<input type="checkbox"/>
I am for protecting these services even if it means that I have to pay more through local taxes etc.	<input type="checkbox"/>	<input type="checkbox"/>	<input type="checkbox"/>
The Council and other public bodies should look to reconfigure the services they provide (social care, health, etc) so people don't have to travel.	<input type="checkbox"/>	<input type="checkbox"/>	<input type="checkbox"/>
It's up to local communities to see if they can raise the necessary funds themselves.	<input type="checkbox"/>	<input type="checkbox"/>	<input type="checkbox"/>

COMMUNITY AND VOLUNTARY TRANSPORT SCHEMES

In 2014/15 the Council spent £381,000 supporting community and voluntary transport schemes. There are 15 community minibus groups providing services in their area for those who are unable to use ordinary bus services and also over 40 Link schemes which cover 98% of rural households, providing transport in the volunteers' own car.

Wiltshire Council works with Community First to administer such schemes on its behalf. If you are interested in volunteering in any capacity, please contact Community First at www.communityfirst.org.uk

23. Have you ever heard of or used a community or voluntary transport scheme in Wiltshire?

- Never heard of them ☐
- Heard of them but never used them ☐
- I have used a scheme ☐

24. If you used a scheme what did you think of it?

- I would recommend it ☐
- OK but no substitute for ordinary bus services ☐
- It wasn't that good ☐

FINALLY

25. This is a challenging review against a backdrop of severe financial constraints. Do you have any further comments or suggestions that will help us? Please also use this question to provide any further details on how the options would have an impact on you personally.

PTO

This image shows a single sheet of white paper with horizontal ruling lines. The lines are evenly spaced and run across the width of the page. There are no margins, text, or other markings on the paper.

Please return completed surveys to the parish clerk by 29 March
23 Cliff Road, Sherston

Closure of the Good Neighbour Co-ordination Service

Wiltshire Council is working with area boards to change the way it works with communities to facilitate local wellbeing. As a result of this, the Wiltshire Good Neighbours service, which has operated successfully in parts of Wiltshire since 2010, is to come to an end. Local area boards across Wiltshire will set up local wellbeing groups that will bring together key individuals and organisations to ensure communities have the information and opportunities to remain healthy and well.

A Wiltshire Council spokesperson said: 'Our local area boards sit right at the heart of our communities and are ideally placed to provide and coordinate this new way of working. The new approach will build on the success of existing networks and links the area boards have. This will ensure local people connect with the resources and services they need to improve their wellbeing and help them remain independent within their community.'

'We would also like to acknowledge the work that the Good Neighbour Co-ordinators and Community First have delivered over the last five years. This work has contributed significantly to our understanding of the support that vulnerable and older people across Wiltshire need.'

Lynn Gibson, Community First's CEO said: 'The work of the Good Neighbours has been well recognised and respected by partners and the people who have received it. We are therefore disappointed and saddened that this good work will no longer continue in its current form. However, we are working with the council to ensure people who need support can receive it, and looking at

the arrangements going forward.'

The Good Neighbour Co-ordinator service will close on Thursday 31 March. At present, the exact arrangements being put in place by each area board have yet to be finalised and anyone requiring support in the meantime should contact the Wiltshire Council Adult Care Help Line on 0300 456 0111 or email customeradvisors@wiltshire.gov.uk

Now for the good news! I have been working with the Area Board and things are progressing well. At time of going to print, nothing is settled, but I hope that the replacement service will be available as soon as possible after 1 April and that I shall be around to continue to support older and vulnerable people in the area. Details to follow. *Ellen Blacker*

MADERAbuild Ltd

Building and carpentry services

- General Building
- Extensions
- Carpentry
- Joinery
- Kitchens
- Project management

Joe 07901850568
Chris 07922938876

www.maderabuild.com
info@maderabuild.com

Conscientious building

sharpes

WINDOWS AND DOORS

Affordable, Quality Double Glazing

We provide an affordable and quality double glazing service that you can rely on.

- Windows
- Doors
- Replacement Glass
- Repairs and Replacements
- PVCu, Aluminium and Composite Products



Tel: 01666 840 042 Mob: 07720 717 902
www.sharpeswindowsanddoors.co.uk

lucy tom

HANDMADE CURTAINS, BLINDS AND HOME FURNISHING ACCESSORIES

We specialise in handmade curtains, blinds and interior accessories. A personal service is offered with home visits and free quotations.

We have a wide range of fabrics and wallpapers available to suit all budgets.

Curtains, roman blinds, cushions, throws, loose covers, headboards, curtain poles, tracks and anything else required.

Mobile: 07813 877509 Workshop: 01666 238925
Email: lucytominteriors@gmail.com

Tolsey News



Judy Sharp Practice Manager

Mother and Baby Checks

We would like to remind parents to register their new babies at the surgery as soon as possible after birth so that we can run a more efficient service for the six-week checks. Babies need to have completed their six-week checks before embarking on their immunisation programmes. The six-week checks can be booked well in advance, but are frequently requested at very short notice which can be disruptive. If emergency appointments are used for the checks, these appointments are not then available to other patients who may need them.

Online Access to Records

We have been giving online access to our patients for several years now, allowing patients to book appointments and order repeat medication. Access to summary records has now been available for a year, which gives patients details of their allergies and sensitivities, acute medication and current repeat medication.

From 1 April, patients can also request access to their detailed coded records. The information available will go back to April 2015 and will show details of all clinical consultations at the surgery for the period. Access will be authorised by a clinician on a patient-by-patient basis on receipt of a written request and strict ID verification.

It is also possible for parents to have access to their child's records up to the age of 11 years. However, this will automatically be switched off when the child reaches his/her 11th birthday.

Further details of these services and the necessary forms are available from the surgery.

Are you planning a holiday in the sun?

Don't forget to plan your travel vaccinations in plenty of time if you are going somewhere exotic. It can take up to six months to complete a schedule of vaccinations. Please complete a travel questionnaire, one for each member of the family, available from the surgery or on the website, and our nurse will help you to plan and assess your needs.

Useful information about travel health can be found at www.fitfortravel.nhs.uk

For the Widest Range of Bedding,

Hanging Basket & Patio Plants in the Area

FOXLEY ROAD NURSERIES

Herbaceous Perennials & Alpines

Vegetable and Herb Plants

Foxley Road, Malmesbury

Tel: 822171 www.foxleyroadnurseries.co.uk



Walk on the wild side

There is cherry blossom on trees in the churchyard, grape hyacinths are flowering and there were some very young ducklings around just before Christmas! We are clearly having a very warm winter and our wildlife is really confused. We really only had our first frost in mid-January and more rain is on the way.

This year the rain hasn't caused too many problems recently, particularly around Malmesbury, in part due to the improved flood defences but primarily due to lower rainfall compared to the flood years. In the long term we can't keep building flood defences due to the sheer cost and also the physical impact of the flood defences themselves. When rain falls it can go in one of three directions: it can evaporate (that doesn't happen much!); percolate through the soil and into the groundwater (this takes time); or run off into the drains, ditches, streams and rivers. The faster the rainfall travels downstream the higher the chance of flooding. Put another way – if, in Sherston, we can drain high levels of water faster, Malmesbury will suffer the impact and the further downstream you go, the greater the possibility of flooding. In many cases, dredging streams and rivers just moves the problems downstream even faster. Our local landscape is quite hilly (for Wiltshire) and the streams and rivers are quite steep valleys. This means we get pinch points in the river system, such as the bridge at the bottom on Tanners Hill, which holds back lots of water upstream and may cause flooding to houses and fields.

After the terrible floods in Cumbria and Scotland over the past few months, the Government has finally recognised that keeping as much water upstream can significantly reduce the levels of flooding but this in turn means large volumes of water being 'captured' in fields, woods, etc, making it really difficult to get on the land and this could impact their income. There



TALLY HO TRAILERS Horse Trailers

New and Used
Sales –Service -Repairs
Van Fautras – Cheval Liberté
– Ifor Williams

www.tallyhotrailer.co.uk

tel: 01666 841149
or 01452 814152

are some relatively simple and very low cost things that can be done – some of which have already been done in the village – have a look at the river flowing through Grove Wood. When it comes to flooding we can't work in isolation and what we do impacts people and property downstream. There needs to be planning and delivery across the whole of the Avon river watershed and this is very complex due to all the different interested parties such as local authorities, water boards, the Environment Agency and wildlife and river trusts.

Locally, Wessex Water has taken the lead on developing a plan for the Avon river catchment. As you may be aware, work has been going on in the river around Grove Wood to improve the habitat. The work has been recognised in Wessex Water's Avon River Catchment plan - have a look at <https://www.wessexwater.co.uk/bristolavoncatchment/> If the plan can be delivered, which won't be easy, it should improve the quality of the whole of the Avon. Whatever the weather, I am sure our local wood pigeon population will do well as they can breed at any time of year if there is food and it's warm enough. If you do hear or see anything of interest do let me know or post it on the WildSherston facebook site.

FYI - there were 17 Little Egrets near Stanbridge on the Sopworth Road - hopefully they will stay to breed ...

Geoff Carss. Tel: 840995.

Luckington Pre-school Quiz and Curry Night

Following the success of last year's event, Luckington Pre-school committee will again be holding a Quiz and Curry night in Luckington Village Hall on Friday 22 April.

For those of you who weren't able to attend last year, it was a great night! The quiz was a lot of fun and for those with a competitive streak (of which there were a good few) there was plenty to get your teeth stuck into! The curry was delicious and an absolute bargain at £10, including entry to the quiz and a free drink!

Just as last year, there will be chances to win fantastic prizes in the raffle and the auction lots are lining up to be superb this year too! It's all for a brilliant cause, our Luckington Pre-school, so come along, make it a community event and support the younger members of the village!

Tickets, available from Luckington Post Office, sold out quickly last year, so don't miss out!

SKETCHUP ARCHITECTURAL DESIGN



3D CAD Models and 2D Drawings



- Design and Visualisation
- Planning Applications
- Building Regulation Drawings

For a free initial consultation contact:

info@sketchuparchitecturaldesign.com

07814 685 519

www.sketchuparchitecturaldesign.com

Pinkney Park. Malmesbury. Wiltshire

JOIN THE SPORT OF KINGS

Flat & NH Racehorse Purchaser based in Sherston

2014 Gr. 1 Winners The Wow Signal & Garswood



www.richardknightbloodstockagent.com
richard@richardknightbloodstockagent.com
 Mobile: 07769 349240

Lumley Garden & Pet Supplies

Stainsbridge Mill, Gloucester Road, Malmesbury, Wiltshire, SN16 0AJ

Tel: 01666 822325 E-mail: etlumley@googlemail.com

www.lumleypetsupplies.com



- * Top Leading Brands of Food & Treats *
- * Our Own Label Premium Dog Food *
- * Bowls, Toys & Accessories *
- * Beds & Cushions *

* Wild Bird Food & Products inc. Live Food *

" for you and your pet's every need. "

Delivery Service Available

Ladies, let's talk about rugby, hamburgers, cross cradles and babies ...

Babies don't come with manuals! Breastfeeding is a skill that needs to be learned – by both mum and baby. Some take to it naturally, some need a bit more help.

That's where we come in. As breastfeeding peer supporters, we have personal experience of breastfeeding, have completed an accredited training program, but most importantly we have survived the first few months!

Over the last year, these are the top three things we have helped mums with:

- Different comfortable positions to feed in. Have you heard of a rugby hold or the cross-cradle hold?
- Latch issues – do you know how to do a hamburger hold and how it can help baby to latch on?
- Confidence with feeding in public – we can show you the vest trick!

But that's not all! We can loan you a hospital-grade breast pump, we have a library of books about parenting to borrow, and an amazing sensory room for a bit of chill-out time!

However you decide to feed your baby, we are here to support you both pre- and post-birth.

But we're not just here to support mums with breastfeeding. Having your first baby can be lonely – so come and meet other new and experienced mums. Share your war stories; ask the questions that you can't ask anyone else! Share tips and advice on bed-sharing, weaning, sling-wearing and social groups or just how to politely decline advice from well-meaning relatives!

Some quotes from mums who have recently attended the group:



As someone who initially struggled to breastfeed, I found the group extremely helpful. The knowledge and expertise is second to none but better yet, they provide a support group of friendly, comforting women who welcome everyone with open arms.

I had just moved to Malmesbury, so the group helped me to meet other mums.

The ladies who run the group are amazing and they help us with all the questions that a new mum could have, and always with the best of their smiles.

I am really grateful because I felt so comfortable there! I love the facilities of the children's centre where the group meet, they are so perfect to be with your baby!

The service that the children's centre provides in the breastfeeding babes group is wonderful and I cannot recommend it strongly enough.

I was nearing my wit's end with a screaming six-week old baby suffering with colic symptoms. The excellent breastfeeding peer supporter instantly advised me that my daughter may have posterior tongue tie. She gave me details of a midwife and informed me of all of the options that I had and where to find further help. I really cannot recommend this service strongly enough!

Join us on Monday afternoons, 1.00pm-2.30pm
Bumps and Breastfed Babes
Malmesbury Children's Centre, Grounds of
Malmesbury Primary School, Tetbury Hill,
Malmesbury, SN16 9JR Tel: 825566

Deborah Aylward Care Services

- * Personal Care/Outings/Sitting Services
- * Over 30 yrs of Experience
- * Fully Insured and Qualified
- * Cheaper Than Agencies
- * Continuity of Care
- * Excellent References can be provided.
- * Phone 01453 811974 or 07766543577
- * All Insurances Provided
- * Business Insurance on Vehicle

Support Worker/Carer/Sleep-Ins
Care Tailored to Suit.

20 Baylands, Newtown, Berkeley, Glos. GL13 9NX

Work and cover a 30 mile radius - travel no problem.
Cover Tetbury, Malmesbury, Sherston, Dursley, Cam,
Berkeley, Sharpness, Wotton-Under-Edge, Slimbridge.

www.dawnrileytennis.co.uk

After school tennis coaching
at Sherston Tennis Club



Tennis coaching for all!

Call Dawn for more details:

0772 959 6562

C.J. GOUGH PAINTER & DECORATOR

41 The Tarters,
Sherston,
Malmesbury,
Wiltshire
SN16 0NT

Telephone:
01666 841003

Positively Dogs



- Behaviour Consultations
qualified, logical, straightforward advice that works
- 1-2-1 Training
tailor made to help you and your dog
- Classes
from puppy to adolescent

for further details or advice please call
01666 840179 / 07712 128147

www.positivelydogs.co.uk

North Wilt's Villages Flower Club

At our January meeting, members enjoyed a demonstration entitled 'To the Manor Born' by NAFAS demonstrator Lucy Ellis. Lucy's arrangements had the audience feeling that they were indeed in a manor house surrounded by the opulence of beautiful flower arrangements. The arrangements were raffled at the end of the meeting and several thrilled members went home with creations to enjoy. Members enjoyed tea/coffee and homemade cake to conclude. Thank you to those who attended in the not-so-nice January weather.

Future meetings

On 16 March, we will be holding an imposed workshop. Everyone taking part in the workshop will be provided with all the materials they need to create their arrangement. The resulting arrangements will be judged by those attending the evening. The results will be used as part three of our annual competition.

On 20 April, Margaret Murray from Bradford on Avon Flower Club will call her demonstration 'Inspirations'.

On 18 May, Linda Garratt will demonstrate under the title 'All That Glistens'. The competition this

month will be a 'golden arrangement', with two levels: improvers and experienced. All entrants welcome.

Flower club meetings take place at Crudwell Village Hall (SN16 9HB) on the third Wednesday of the month, 7.00pm for 7.30pm. If you enjoy flowers, come and join us – visitors and new members are always welcome.

For more information, please contact Margaret on 01285 770 639.



ABBEY DAM PROOFING

Malmesbury, Wiltshire

DPC Injection • Woodworm Treatment
Tanking • Cellar & Basement Conversions
Dry & Wet Rot • Condensation Control
Plastering Services • Replacement Wall Ties
Guarantees provided • Fully insured

Tel: 01666 823520 Mobile: 07951 437163

chrisgrayson92@yahoo.co.uk

Ride On Cycles

The Mobile Cycle Workshop That Comes to You

Full range of servicing & repairs carried out by a City & Guilds qualified mechanic.

Contact Andy on:

01454 880872 / 07443333219

andy@ride-on-cycles.co.uk

www.ride-on-cycles.co.uk



Nestled in pastureland on the outskirts of Sherston.

Three lovely double, en-suite rooms.

Peaceful and private, separate from main house.

Alastair
Sanday's



 **tripadvisor**

Luckington Road, Sherston.
01666 841445

www.carriersfarm.co.uk
info@carriersfarm.co.uk



Derek James Scott[®]
GARDEN DESIGN & LANDSCAPING LTD

We Design, We Build
Beautiful Gardens...



www.derekjamescott.com

Tel: 01666 213108



Bradstone Assured Member



Freelance
Tetbury Bookkeeper
Philippa Lark

* Local References *

Keep accountancy costs down with
excellent quality bookkeeping records

www.tetburybookkeeper.co.uk
01666 505824
07771 914512

MAN FOR ALL SEASONS

**WILL UNDERTAKE
ALL HOUSE/GARDEN
MAINTENANCE
NO JOB TOO SMALL**

From

CUTTING HEDGES,
WEEDING THE GARDEN
& CUTTING DOWN TREES
To

PAINTING & SMALL JOBS
IN THE HOUSE

**ALL MACHINERY PROVIDED
- LOG SPLITTER AVAILABLE**

01666 825463

Bad Guys – A show for all the family, not to be missed!



Grittleton Village Hall with Rural Arts Wiltshire present Bad Guys on Sunday 3 April at 3.30pm (doors 3.00pm) at Grittleton Village Hall.

Stars of CBeebies newest show 'Spot Bots' proudly present a slapstick misadventure for anybody aged 5+! Follow three hapless brothers as they valiantly try to become feared villains! The only trouble is, the Three Half Pints are much too stupid to be bad guys. Come on the adventure as they slip, trip and tumble their way through all manner of dastardly schemes. Will

their pirate ship sink? How will they fare as bandits of the wild wild west? And is that a monster mad scientist Derek is trying to raise? A hilarious show!..

Tickets from Jan on 01249 782798 or dandjeffcoate@btinternet.co.uk

Adults £7, Concessions £6, Children (under 16) £4.50,

Families (2 adults & 2 children) £18.50

Target Audience: Ages 5+

Do you want to know YOUR FAMILY HISTORY

Skeletons in the cupboard, convicts, statesmen, rich man, poor man, beggar man, thief? We all have them and they are hiding there waiting to be found.

Let me find them for you.

Beryl Clampton

Call anytime: 01666 841201
or 07850 623517
e-mail: beryl@clampton.com

Firewood

*Dry seasoned,
hardwood logs*

Barn stored

any size available

Also kindling sold in nets

Delivered to your door

For more details call Steve on

01454 232941 or

07974194012

PAWS FOR THOUGHT

PROFESSIONAL DOG WALKING AND MINDING SERVICE

- Bespoke service for you & your dog
- Experience in handling both large & small dogs
- Fully insured in all aspects of dog care
- Knowledgeable in canine first aid, training and obedience
- Group or individual walks available
- Established & recommended for 6 years

Animal Minding Service also available for cats & domestic pets. Animals are happier & more secure in their own environment. Daily visits provided to include feeding, grooming, tlc & medication if required

Please call **Sophie Francis** on 01666 840538

or 07531 057016

References available
on request



T H WHITE COUNTRY STORE

**Gardening Equipment, Country Clothing,
Safety Footwear, Animal Feeds,
Household Cleaning Products
Britains Toys, Tools and Ironmongery.**

Open to Trade and General Public

Monday to Friday 8.00 am to 5.30pm

Saturday 8.00 am to 12.00 Noon

**Wishing all our
Customers a
Happy New Year**

**HULL
CARTRIDGE**



**Now in
Stock
Logs &
Kindling**

**Anti-freeze,
Screen wash
& De-Icer**

**Hull
Shotgun
Cartridges**



**Large Selection of
Britains Toys**

BRITAINS®



**Sherston Works, Knockdown, Nr Tetbury, Glos. GL8 8QY
On the A433 between Tetbury & Didmarton**

Tel: 01454 238181 Fax: 01454 238772
www.thwhite.co.uk

Marathon Mission

My name is Gemma Willoughby and I am 31 years old. In 2007, I weighed 15 stone and was very unfit. One day I decided enough was enough; I was no longer going to feel I had no worth. I started running, with the idea that I would complete a running challenge and support a local charity – and so my journey began! I ran the Bath University Cancer research 5k, then the 10k – it turned into a bit of an addiction – and I soon completed my very first Bath half marathon for Whizz Kids. Not only did I get the fitness bug, but I also got a sense of achievement for helping a charity, and I wanted to continue this success. So, my next mission is to complete the London marathon on 24 April. It is a mammoth task with a mammoth sponsorship target, so I am looking for your help and support in any way you can. I have a target to raise of £2,000 for a charity called Bloodwise, which does a lot of research into leukaemia and lymphoma. After a


lymphoma scare myself, I realise how important it is to make people aware of such charities. Sadly, many of us know someone who has been touched by cancer.

I know a lot of people might read this and think 'I'll do it later'; please don't forget as every little helps in making my mission a memory. If you would like to sponsor me, my just giving page is www.justgiving.com/Gemma-Hudson1/ Alternatively, if you are able to put a sponsor form anywhere for me, please let me know and I can drop one off. Or, if you would like to sponsor me and have your company logo on my training kit and running shirt, please email me and I arrange this.


Thank you so much in advance, and if you would like to follow my highs and lows my Facebook page is <https://www.facebook.com/mymarathonblog/> timeline



Kristian Pettifor
Designer and maker of bespoke freestanding and fitted furniture.



www.kristianpettifor.com
Kristianpettifor@gmail.com
07922878899



R&B VEHICLE SERVICES
Est. 10 years

01454 238700

REPAIRS, SERVICING
DIAGNOSTICS, BATTERIES
TYRES, EXHAUSTS
FOR CAR, 4 X 4 & LIGHT VANS
FREE LOAN CARS AVAILABLE
YOU CAN NOW BOOK YOUR MOT ONLINE AT
www.mottetbury.co.uk



BAY 4 KNOCKDOWN
1 MILE FROM WESTONBIRT ARBORETUM

COST EFFECTIVE MAINTENANCE AT A FRACTION OF DEALER PRICES
CALL RICHARD OR BEN FOR FRIENDLY, RELIABLE SERVICE

BALCONY HOUSE CELLARS
The Old School, High Street, Sherston SN16 6LL.

The UK's largest selection of wines from South West France from £4.99.

Over 200 vintage wines from Bordeaux, Rioja and Port from the 1930's to 2000. We specialise in stocking and sourcing wines for presents and special occasions including large formats.

Range of regional foods from France, Italy and the UK.

Open evenings, weekends and bank holidays.

Tuesday to Friday	5pm-8pm
Saturday	10am-8pm
Sunday	12am-4pm

Free

- Local delivery for 6 bottles and over.
- Menu advice.
- Wine search and sourcing.
- Valuations and purchase, or commission based sale of good quality vintage wines.

We also hold private or corporate wine and food tastings for 4-40 people. Why not have a private tasting dinner party at your house?

For telephone orders and specialist advice please call Neil on 07976 776359.

www.balconyhousecellars.com

HMH CONTRACTING LTD
General Builders
Tel 01666 841412
Email info@hmhbs.co.uk

- *Extensions
- *New Builds
- *Kitchens
- *Bathrooms
- *Listed Buildings and Renovations
- *Architectural Design and Planning Service

COMPLETE BUILDING SOLUTIONS FROM START TO FINISH

In Association with Partridge Architectural Services 07833433872
Email drawings@partridgehouse.co.uk



Groups and Regular Events in and around Sherston

Holy Cross Church

The Coffee Shop - Fair Trade tea and coffee with homemade biscuits biscuits and brownies - Open Thursday mornings only to Easter 9.30 am - 12 noon

Sunday services 8.00am Holy Communion; 9.30am Holy Communion (3rd Sunday 9.30am Family Service); 6pm Evensong (3rd Sunday Evening Holy Communion from the Book of Common Prayer) See the Parish Life for more details

Mustard Seeds is a Saturday morning club for children aged 4 and over, from 10am - 12noon once a month.

Congregational Church - in The British

Schoolroom Services at 11am apart from 1st Sun 4pm. Brick Club alternate Fridays 5.30 - 6.30 / 6.30 - 8pm All services are led or hosted by Pastor Andrew Williams-Tarling. Contact awtcharfield@hotmail.co.uk or 07921 390878 (or find us on Facebo.

Methodist Church Services every Sunday at 10.30am apart from 3rd Sunday in the month when service is held at Luckington. For further details see the Parish Life

Gauzebrook Church for Children

Children are welcome at all the services which are held in the Gauzebrook Group churches but there are some occasions which are particularly for them: **Junior Church** is held at Court House, Hullavington. This is for children from 3 to 11+. Any children under 3 need to be accompanied by an adult.

Contact Becky Fisher 07974 030212 or becky.fisher@deanery.org.uk

Little Lights Every Thurs, 10.30 am in Hullavington church. Children aged 0-5 and their parents/carers come from across the Group, including Sherston, for songs, crafts, activities, Bible stories and snack time. Any questions, contact Chantal on 837522

Easton Grey Parish Church

See Parish Life for details of services

Sunday Newspapers

On sale 8am - 11am every Sunday in Sherston village hall.

Link provides a voluntary car service for residents living in the Malmesbury area, taking those in need to hospital, the chiroprapist, GPs' surgeries and to visit sick relatives. For further information please call 840861 between 9am and 1pm Monday to Friday.

Ancient Order of Sherston Mangold Hurlers

Why not join us and discover the joys of mangold hurling and all its traditions? For further information email ebeplaced@aol.com.

Busy Hands Pre-school Meets 9.10am - 12.10pm everyday in the village hall for 2 3/4 - 5 year olds. Lunch Club Mon to Fri until 1pm and exciting new outdoor free flow area. All childcare vouchers welcomed. For further details call Henry Crawford on 841065 www.sherstonbusyhands.org.uk or email us on chair@sherstonbusyhands.org.uk

Castle Combe Colts Football Club Join a charter standard club with CRB checked FA qualified coaches, fantastic playing & training facilities and a healthy inclusive culture - take a free 4 week taster session. Currently recruiting for the following age groups: Mini-Kickers (Rec/Y1) U10 (Y5) U11 (Y6). Tel 837286 or secretary@cccfc.co.uk www.cccfc.co.uk

Charity Bingo In aid of a different local charity each month on the 3rd Friday at 7.30 for 8pm start in the village hall. 50p entry and 30p a book. Light refreshments available.

Church bell ringing Practices are every Wednesday 7.30 - 9.00pm. Call Geoff Martin 840375 or come along.

Clem's Club Meets 2nd & 4th Tuesdays Feb to June and Sept to Dec 2.30pm - 4 pm in the British Schoolroom (alternating with the Senior Club). All friendly fellas welcome for simple char and chat.

Dance classes at The Scout Hut Fun and friendly classes for children to learn ballet and/or jazz on Tuesday afternoons during term time Preschool/infant ballet 3.30 - 4pm, Jazz 4 - 4.30pm. Junior ballet 4.30 - 5pm, Jazz 5 - 5.30pm All abilities welcome. For more information please call Abigail on 07720 396195.

Drawing Classes in Sherston

Classes are held in the British Schoolroom during term times Weds either 10am to 12noon or 1.30 to 3.30pm. Students have individual attention and the classes are friendly and welcoming. We work on observational drawing in a range of media, pencil, watercolour crayon and pastel; subjects include plants and flowers, natural objects and still life groups. For further information please contact Heather Martin heather@geoffmartin.plus.com or phone 840375

Eudo Tae Kwon Do Thursdays 7-9pm in Sherston primary school hall. For details contact Simon Penfold 824773.

Footpaths group The group has published the booklet 'Sherston Walks - a new guide to local rights of way', featuring 10 local walks and is now on sale at the post office. If you would like to learn more about the footpath group and perhaps take part in some of its activities please come along to a meeting. For further information contact Maggie Harries on 841047 or maggie@harriespartnership.com

Forest School Club Weekly outdoor activities during term time at both Sherston and Luckington School and further fun extended sessions during school holidays. For further information please contact nikiwalden-forestschool@hotmail.co.uk

Fresh Air Fitness A fun outdoor workout suitable for all levels. Sherston Rec Fridays 9.30-10.30am £6 per class. Book with Stuart 07986 003602 / 01453 836173 or stuart@pulse4life.co.uk

FSS Winter Games Club Board games and cards in the Scout Hut Fridays 3.15-5.15pm from 29 Jan. £1 per child including squash and a biscuit. Coffee and a catch-up corner for adults, all in aid of Friends of Sherston School. For more details contact Sophie Cheetham (sophcheetham@gmail.com) or Alex Evelyn (alexrevelyn@gmail.com)

Hogwards The Help a Hedgehog Hospital charity has a satellite hospital in Tetbury. Mary Hinton 07779 299224 www.helpahedgehog.org

Ingleburn Trefoil Guild Meets on the 3rd Monday of the month, usually at St. Mary's School Tetbury at 7.30 p.m. Lifts are available for non-drivers in the Sherston/Malmesbury area. Details from Helen Price, 503187 or retreatcottage17@btinternet.com

Malmesbury Area Board Meeting

For details see www.wiltshire.gov.uk/areaboards

Malmesbury Concert Band Rehearsals on Fri evenings in Malmesbury, 7.15 - 9.15pm. The band performs at local Bandstands, public concerts, etc. and is always on the look-out for brass and woodwind players (and percussion and string bass or bass guitar) of reasonable sight-reading ability. For further details and to ascertain current vacancies see our website <http://www.freewebs.com/malmesburyconcertband/> and/or contact Tony Fleming, the Musical Director, on 575229 or tony@jacfleming.plus.com

Malmesbury Community Choir

The Malmesbury Community Choir is a non-audition performing choir that meets for rehearsals in the Old School Room at the Town Hall every Monday evening from 7.30-9.30pm. The waiting list is currently full for ladies, but we would always welcome extra men and young people between 14-21 years old. Membership is £50 per quarter, but membership for U18s is free and U21s is half price. For further information please email info@malmesburycommunitychoir.org, visit the website at www.malmesburycommunitychoir.org or www.facebook.com/MalmesburyCommunityChoir.

Malmesbury Embroiderer's Guild

The local branch holds monthly meetings at Little Somerford Village Hall. On alternate months there are Saturday workshops on a wide range of topics, and on the intervening dates there is a Tuesday evening talk at 7.30pm. We always welcome newcomers and occasional visitors, although prebooking is essential for the workshops. Just turn up for the talks - non members £5. For further information please phone Heather Martin 840375 or www.malmesburyembroiderers.blogspot.com

Malmesbury Luncheon Club Over 60s meet every Wednesday at midday in the Wesleyan Room of Malmesbury Town Hall for a chat and a 2 course lunch followed by tea or coffee. £3.50. Please call Helen Churchill on 840080 if you'd like to attend. New members most welcome. Volunteers also needed to prepare and serve lunch, no washing up.

Malmesbury Film Society Memorable new, classic and foreign films are shown at 7.30pm every 3rd Sunday of the month at St. Mary's Hall, Malmesbury - no booking or membership necessary. Join us for unique films and an enjoyable evening out. See our website www.malmesburyfilmsociety.org.uk for details on all upcoming films.

Malmesbury Villages Community Partnership For details contact Woody Allen 390110 mark.allen@allencan.co.uk

Malmesbury Rainbows, Brownies & Guides For details contact the Division Commissioner at malmesbury@wncounty.org.uk

North Wiltshire Villages Flower Club

(affiliated to National Association of Flower Arrangement Societies - NAFAS) meets at 7.30pm on the third Wed evening of most months of the year at Crudwell Village Hall. Join members come from the surrounding villages to hear speakers and enjoy floristry demonstrations and do workshops and competitions. Call Margaret Stanford on 01285 770 639 to answer any queries or give information about forthcoming events.

Parish Council Meeting Takes place on the 2nd Thursday each month at 7.30pm in the village hall. Minutes of meetings can be read online at www.sherston.org.uk. Further details contact Sarah Wood on 840197 or clerk@sherston.org.uk

The Rattlebone Boules League Consists of 48 teams playing in 3 Leagues. Contact Tony Towle on 840574.

Red Bull Inn Boules Friendly boules club at the Red Bull Inn (Malmesbury Rd) - meets every Thurs at 7.15pm - any level. For the more competitive members, there is a team playing in the Cotswold Pétanque league. To enter, please contact Sue McKechnie on 840601 or susannemckechnie@hotmail.com

Senior Club Meets at 2.30pm in the British School Room every other Tuesday alternating with Clem's Club.

Sherston 1016 Fundraising for local good causes and charities. Contact sherston1016@gmail.com or Martin Jacques 07717 424619

Sherston Badminton Club We play every Tuesday evening from 7.30pm in the Village Hall from September to the end of May. - New members welcome. For more information contact David Boyle 841587 or email djboyle@hotmail.com

Sherston Brownies Meet every Wednesday during term time 5.45 - 7pm in the Scout Hut. All girls are welcome to join after their 7th birthday, but there is a waiting list. Visit www.girlguiding.org.uk and follow the parents link to register your interest, for all other queries contact Tawny Owl (Nicky) at nicky.gray@btinternet.com

1st Sherston Cub Scout Pack

Membership of the Cub Pack is open to those between 8 and 10 ½ years old. The Pack has regular meetings on Friday nights in term times from 6.30pm to 8.00pm. There is a waiting list for Cubs, and those interested should contact Greg Hughes, Baghera, Cub Scout Assistant Leader, greghughes_2000@yahoo.co.uk to obtain an application form

1st Sherston (John Rattlebone) Scout Troop

Is open to young people from the village and surrounding parish from the ages of 10 ½ to 13 ½. We meet at the Scout hut on Tuesday nights from 7.00pm to 9.00pm during school term times. To join contact Riaan van Rooyen riaan@pulse-software.co.uk There is currently a small waiting list to join.

Sherston Whitewall Explorers

You don't need to have previously been a member of scouts or guides to join us, just be aged between 13 ½ and 18 and free between 8.30 and 10pm on a Friday night during term time; for further information please contact Darren Walsh - 841043 or Ewan Blair - 840096 - whitewallexplorers@googlemail.com

Westonbirt Guides Meet in Querns Hall, Rosehill School, Westonbirt 5pm - 7pm every Wednesday. Sherston Brownies tend to come along if they don't join Scouts. Details from Ann Bye, 01454 218152, ann.bye@virgin.net

Sherston Drama Group

The Drama group puts on plays and pantomimes in the Village Hall. If you are interested in taking part or helping out contact Richard Skeffington (Chairman) r.a.skeffington@gmail.com Tel. 840092

Sherston Town FC The club play in the Stroud league at Knockdown Park on Saturday afternoons - spectators and new players welcome. Contact Pete Brock on 07912 777647 or peter.brock666@btinternet.com

Sherston Ladies' Swimming Club

Want to get fit? Lose weight? Our Club is a friendly and sociable group open to any ladies of any swimming ability from Sherston and the surrounding area. We swim at Westonbirt Leisure Centre on Wednesday evenings from 8 - 9 pm. Everyone swims at their own pace although there is a lane for faster swimmers. It costs £5 per week, £40 for 10 weeks. For further information please phone Maggie (840969), Annabel on 840592 or Heather (840375).

Sherston's Living Churchyard

Please help maintain the living churchyard on the second Wednesday of the month from 2pm to 4pm, weather permitting. Please check with Sue for timings each month. Church of the Holy Cross Further details contact Sue Robinson on 841263

Sherston Magna Cricket Club Junior nets have now finished for the season, but u15s are welcome to Senior nets

at 6.30pm on Tues nights at Pinkney Park. If you would like to get involved with local cricket please email cricket@sherstonmagnacc.co.uk or visit the website www.sherstonmagnacc.co.uk

Sherston Netball Club Training every Monday 7.30pm at Westonbirt Leisure Centre. All ages and abilities welcome. £3 per session. For more info, please contact Ailsa (07971 845206), Lauren (07885 597429), Saara (07739 552336) or Kate (07792 064438).

SH.o.C.C. The choir meets at 7.30pm each Wednesday in the British Schoolroom £3 per session - Summer term will start after the Easter break. Refreshments 50p. Further information from Lucy Lawrance on 840778 (evenings) or lucy@sherston.plus.com

Sherston Photography Forum

A monthly group has formed in Sherston for anyone with an interest in photography 2nd Tuesday of each month at 7.30pm in the Village Hall. For details call Nick Holland on 841019 or nholland63@btinternet.com

Sherston Pilates Classes held on Wednesday afternoons and evenings in the village hall. Run by Saara Sharman, Chartered Physiotherapist. All ages and abilities welcome. For more details contact Saara on 07739552336 or sherstonpilates@gmail.com

Sherston Tennis Club The tennis courts are located on Knockdown Road, open to all over the winter. Children's Sat am coaching will start after Easter. If you would like to be emailed with details nearer the time, please contact Sophie Cheetham on 07786 990045 or sophcheetham@gmail.com. If you're interested in joining the club or using the courts, please contact Nic Riley on 840682 or nic50riley@gmail.com.

Sherston Theatre Club Excursions with a Sherston High Street-to-venue return coach service. Annual fee £20. Listings under www.communitate.co.uk/wilts/sherstontheatreclub/ or contact Helen Quirk on 840516 or helenandjim@thequirks.plus.com

Sherston Toddler and Baby Group

The group is a fun way for babies, toddlers and their parents to meet and play. We meet at 10 -11.30am each Tuesday in the Scout Hut with toys for all stages from wrigglers to toddlers, craft activities, music and snacks for all, not to mention a much-needed cup of tea/coffee for the deserving parent. Further details contact Sophie Cheetham, sophcheetham@gmail.com 07786 990045 or alternative like us on Facebook for regular updates www.facebook.com/sherston.toddlers

Sherston Velo A new cycling club formed of enthusiastic road cyclists from Sherston and the surrounding area - formally accredited by British Cycling at the end of 2014. There are regular rides each Saturday and Sunday morning with a fast paced group leaving first for an hour, followed by a longer club run. For membership and other information about the club, visit the website www.sherstonvelo.cc or email Mark Walsh at secretary@sherstonvelo.cc

Sherston Village Hall Available for hire by all. Ideal for meetings, events, parties etc. For details Chris and Tony Weedon 841377 or email dogleg3@gmail.com

Sherston W.I. Meetings on first Thursday of month Mar - Sept in the Village Hall (except Apr due Spring Play) at 7.30pm and Nov/Dec/ Feb/Apr in the British Schoolroom at 2.30pm. No meetings Oct or Jan. New programme in Mar. Visitors always most welcome £3.50. Further information: Secretary 840578

Sherston Young Craft Group Every Monday 6.45 - 8.15pm in the village hall (children 9 years and over). £3 (incl all materials) per evening paid in advance of each half term. To join, please contact Minnie Hulme on 841118 or email hulmessherston@sky.com

WEA Sherston Arts, Literature and History Courses

The WEA (Workers's Education Association) offers courses on the Arts, Literature and History in the British School Room, Cliff Road. For more information or to book a place contact Warwick or Pat Jones on 840764 or warwick.jones@btinternet.com.

Village Hall 300+ Club For an annual subscription of only £6, give yourself the opportunity of winning a cash prize in every monthly draw whilst supporting the Village Hall. If you would like to join, or need more information, contact the coordinator, Lin Prior on 840846.

Wiltshire Walks The walk lasts approximately 45 minutes and often ends with a cup of tea or coffee. Further information contact Sarah Sims sarah.sims@wiltshire.gov.uk or 07846100233. For a full list of walking groups in Wiltshire please visit www.wiltshire.gov.uk/getwiltshirewalking.

Wild Yoga Mon evenings during term time - 6.45-8pm and 8.15-9.30pm in the village hall. Drop in rate £9 reducing to £7.50 if you take up the course. Contact Theo 07818 401110 or theo@wildyoga.co.uk

If you run a club, society or organisation in Sherston that holds regular events such as the above and wishes to be listed, please supply your details and we will add them to the Regular events list. If you have a particular event then please write a short piece about it and we can include it as an article and put the details in the What's On list for that month.

WHAT'S ON

Dates for your diary 2016

April

- 6 Sherston Drama Group Spring Play - a Thriller
- At the Sign of the Crippled Harlequin

May

- 6 Stompin Dave and his Blue Grass Band,
Village Hall

June

- 12 Sherston School Olympic Day

- 18-19 Open Gardens Weekend

- 24-25 Battle of Sherston Events

July

- 16-17 Boules Weekend

If you're planning a community event in the parish why not let the Cliffhanger have the basic details as soon as possible? Email info@sherstoncliffhanger.co.uk to add the event to this list. Everyone will then know what's occurring in good time and it will help prevent events clashing.

Sherston

The Rattlebone Inn

Monday Quiz Nights Every Monday at 7:30pm

Free entry and prizes for the winning team

Mothering Sunday Mothers receive a special treat at lunch Sun 6 Mar

Golf Society match Tues 22 Mar

Live music - The KillerTones Easter Sunday 27 Mar

Check boards for more details of events

For further details call 840871 or follow on Twitter

#GavinHunt@Therattlebone or visit www.therattlebone.co.uk

Sherston WI Talks

Gardening for Wildlife with Paul Jupp 3 Mar 7.30pm VH Visitors always welcome - £3.50. If new to the village come and make new friends.

Cruise in the Antarctic with Mo Mulrain 7 Apr 7.30pm BSR

Running a Garden Centre - Behind the Scenes 5 May 7.30pm VH

For further details call Jill Woodward 840578 or

jillwoodward222@btinternet.com

Senior Club Spring Sale

Spring Talk: Colin Law "My life as a coach driver part two" 8 Mar 2pm in the British school-Room. Members free Visitors £2 New members welcome - subscription 2016 is £15.00.

British School Room For further details call Helen Quirk 840516

SHOCC Concert

Sherston Occasional Community Choir in concert for Family & Friends Wed 16 Mar 7.30pm There will be a small charge for refreshments on the night. For further information please see the Sherston Community Choir Facebook page. British School Room For further details call Lucy Lawrance on 840778 (evenings) or lucy@sherston.plus.com

Senior Club Spring Sale

Tues 22 Mar 2pm in the BSR Various stalls Bring and Buy, Bric a Brac, Books, Nearly New, Tombola, Raffle Free entry

Church events

Good Friday Workshop 25 Mar 10.30-1.45 including lunch followed by the Family Service at 2pm All children welcome - activities suitable for 4-11 years. Younger children should be accompanied by an adult

Good Friday Walk to Luckington followed by an open air service, and hot cross buns. Dogs welcome

Worship Together Sun 13 Mar 9.30am preceded by breakfast at 9.15 am - every 2nd Sun of month (the 8 am service will be the Communion on that day) all ages can worship together, and during the talk there will be a children's group and a crèche area

A new event this year is 'A Space for Waiting' in the Lady Chapel of Holy Cross at 4pm on Holy Saturday.

Date for your diary: Open Gardens Weekend Sat 18 & Sun 19 June All proceeds go towards the upkeep of the Church. If you would be willing to open your garden or want more information, please get in touch with Heather Martin heather@geoffmartin.plus.com or phone 840375 Church of the Holy Cross

For further details call Rev Susan Harvey 840696 or susan.harvey44@hotmail.com

Worker's Educational Association (WEA) Art, Literature and Music courses

Three Choirs Festival - 1 day course Tim Porter holds comprehensive exploration of the 300 year history and music of the internationally renowned festival being celebrated at Gloucester in 2016. Sat 19 Mar 2016, 11am - 4.40pm £25 British Schoolroom. For further details call Enquiries and bookings contact Warwick or Pat Jones on 840764 or

warwickandpatjones@gmail.com or visit www.wea.org.uk

Sherston Market

Local crafts and produce which vary each month, cake stalls including Aunt Addie's Farm Project fresh local vegetables and cheeses from Brinkworth Dairy.

perfectly you

cosmetic injections

Treatments that help soften the fine lines and wrinkles on your face:

- Free personal consultation
- Forehead lines, frown lines, crows feet
- Skin rejuvenation, scar and blemish reduction
- Treatment for excessive underarm sweating

Dr Pip Pettit

BM FRCGP Aesthetic Practitioner, Sherston, Wiltshire

Tel: 0788 7582 233

www.perfectly-you-aesthetics.co.uk

Every month a free stall in the lobby is made available to local charity or voluntary group to raise funds. See www.sherstonmarket.weebly.com for dates and a contact form. 10am-2pm Village hall

Sat 26 Mar Sat 16 Apr Sat 14 May Sat 11 Jun

For further details call 07887 814843 or 07769 613627 or email info@awkwardsquad.co.uk or visit www.sherstonmarket.co.uk or www.facebook.com/pages/Sherston-Market/195319400641324

Art Exhibition at Shear Class Salon

Mar and Apr shows work by Gloria Pugh, who is a member of Bath Textile Artists and lives in Luckington. She has also been co-leader of Sherston Young Craft Group for many years so members, past members and their parents might be interested to see what Gloria does in her 'spare' time. Anyone can call in to see them – you don't have to be attending the salon.

Shear Class, High St

Sue's Strolls

Sun 3 Apr Please assemble at the village hall for 10.00am with a return Rattlebone Inn just around 12noon for seasonal refreshments. As ever children and well behaved dogs, the latter on leads, are very welcome. The walk is entirely free and there is no need to book a place – just turn up on the day. This is a PHEW! event see www.legacymalmesbury.org.uk

For further details call Sue McKechnie 840601 or susannemckechnie@hotmail.co.uk or visit www.legacymalmesbury.org.uk

Sherston Primary School

Spring Clean Sat 16 Apr 10 to 2pm We'll be giving the playground a spruce-up, holding a car boot sale in the school car park, and selling burgers at lunchtime to keep everyone going! Bring a broom and a spade, and come and join in! Any profits go towards the Fitness Trail, we've £3,200 left to raise!

For further details FSS Chair Fi Picton via fi.parsons@which.net

1016 Stock Clearance Book Sale

Sat 23 Apr 10am - 12 noon village hall - free entry **NO BOOK DONATIONS PLEASE**. Our books are very reasonably priced with 99% being only 25p each or 5 for £1. We always have a massive selection including a children's section. DVDs and CDs are £1 each. For further details call 840611

FSS Olympic Legacy Day

on Sherston's Rec Sun 12 Jun from 11am - 4pm Our very own Olympic legacy continues, offering children the chance to take part in a mini-decathlon - and win a bronze, silver or gold medal! 'Passports' on sale soon (£2.50 per child). It features a competitive mini decathlon with medals for girls and boys in each year group at primary school, a barbecue and bar for the grown-ups.

1000th anniversary Battle of Sherston Boules – Fri 24 Jun

Viking boules competition A round robin involving as many teams as possible. Rattlebone Inn

For further details call If you would like to be involved, please contact Sue McKechnie on either 840601 or susannemckechnie@hotmail.co.uk or Tony Towle on either 840574 or atowle@btinternet.com

Boules & Carnival – Sat 16 July

Boules Competition Entry Forms Registration for Entries into the Boules competition will open on 16 Feb, preferably online through www.sherston.net but paper entry forms will be available Sherston Post Office (by the coffee machine).

Sherston and surrounding villages Rural Arts Wiltshire

Simon Mayor and Hilary James - A Riot of Music and Laughter Simon's inimitable off-the-wall humour as well as mandolin, guitar and fiddling wizardry meets Hilary's 'honey-dripping' vocals and mighty mandobass! If you've heard them on BBC Radio 2, 3 or 4 you'll know a treat is in store. Fri 4 Mar 7.30pm at Castle Combe Village Hall Tickets: 01249 782821

Mervyn Stutter Utterly Stutterly Merv chats, tells jokes, makes pithy observations with lots of clever comedy songs on guitar. He is an entertainer – pure and simple. Age guidance 16+ -21 Brinkworth Village Hall on Sat 5 Mar, 8PM Tickets: 510545 / 510045

Three Half Pints - Bad Guys Stars of CBeebies Spot Bots present a slapstick misadventure for anybody aged 5+! Follow three hapless brothers as they valiantly try to become feared villains. The only trouble is, the Three Half Pints are much too stupid to be bad guys - they're only good at being good. Come on the adventure as they slip, trip and tumble their way through all manner of dastardly schemes. Sun 3 Apr at 3.30pm Grittleton VH Tickets: 01249 782798 / dandjeffcoate@btinternet.com

Joli Vyann H2H Hand to Hand – is a new, exciting and thought-provoking show. Mixing dance, circus and theatre in an innovative way. It explores the fragility of human relationships, of hands supporting another person. Hullavington Village Hall Fri 29 Apr 8pm Tickets: 837569

Stompin' Dave and his Bluegrass Band Fri 6 May at 7.30pm in Sherston Village Hall. Tickets £10 available nearer to the date. The band, who have performed at lots of Festivals including Glastonbury and Bestival, play classic bluegrass and old-time music. Licenced Bar. Adults £7, Concs £6, Children (under 16) £4.50, Families (2 adults & 2 children) £18.50 Target Audience: Ages 12+

Sherston Village Hall
For further details call or visit www.ruralartswiltshire.org.uk

Knockdown The Holford Arms

Live Music every weekend

Check boards for more details of events

For further details call 01454 238669 or info@theholfordarms.co.uk



DJ. HICKS
ANTIQU
FURNITURE
SALES, RESTORATION & UPHOLSTERY
Unit 1a Warren Business Park, Knockdown
Nr Tetbury, Gloucestershire GL8 8QY
Tel: 01454 238004
Mobile: 07889 655152
Email: djhicksantiques@hotmail.co.uk
Website: www.djhicksantiquefurniture.co.uk



www.foot-health-care.co.uk
FOOT HEALTH CARE
Corns - Nail Trimming – Verrucae - Hard Skin
Athlete's Foot - Ingrown Toenails - Nail
Infections Cracked Heels (Fissures)
Sina Ohms MCFHP MAFHP
Foot Health Practitioner
Clinics available at:
The Oxford Practice, Malmesbury
Tel: 01666 824 560
The Chippenham Natural Therapy Centre
Tel: 01249 443 390
Home Visits
Tel: 01666 838683 Mob: 07593 324 128

Easton Grey Whatley Manor

Corrigan Jewellery Ladies' Lunch 'Unique Treasures & Antique Chic' with Corrigan Jewellery £45 includes coffee on arrival from 10.30am. Paul's presentation will start at 11.00am. A glass of champagne and viewing of the Corrigan collection from 12 noon. At 12.30pm a two-course lunch with a glass of wine will be served in Le Mazot Brasserie followed by coffee and a chance to try on some pieces

Thursday evening cinema £23 includes a choice of either a glass of wine, a bottled beer or soft drink. A small tub of delicious ice cream (choice of flavour) and of course popcorn. Must be prebooked 8.30pm start **Spectre** starring Daniel Craig 10 Mar **The Lady in the Van** starring Maggie Smith, Alex Jennings and Jim Broadbent 14 Apr **Sunday Cinema** £8.50 includes your cinema ticket for the screening and popcorn. In addition, on the day, choose one, two or three courses from the a la carte lunch menu in 'Le Mazot' brasserie The Sunday Cinema Screenings must be pre-booked and at least one course must be booked **Spectre** starring Daniel Craig 13 Mar **The Lady in the Van** starring Maggie Smith, Alex Jennings and Jim Broadbent 17 Apr

For further details call 834026 or visit www.whatleymanor.com

Westonbirt The Arboretum

New Beginnings - family event Discover how the trees are waking up for spring and try your hand at some spring crafts. Tues 29 Mar - 1 Apr 11am-4pm Free after entry. Meet at Silk Wood Barn. Dogs welcome. Till Feb admission prices Adults £6 Concs and those arriving by bike or public transport £6 Children (5-18) £2 under 5s free **Specialist Wood Sales** 2nd Saturday and Sunday every month 10am-1pm in aid of FOWA

The new **TreeQuests** app enables adventurers to create their own quest through the arboretum, with interactive challenges along the way... **Summer concert dates** - 2 dates left TBA June - Thurs 16 Rudimental SOLD OUT; Fri 17 Kaiser Chiefs SOLD OUT; Sat 18 UB40 Featuring Ali Campbell, Astro and Mickey Virtue; Sun 19 Tom Jones Tickets from the Arboretum or <http://boxoffice.forestry.gov.uk/default.aspx> Check website for details of events, wood and photography courses, guided walks and family fun days

For further details call 880220 or visit www.forestry.gov.uk/westonbirt

'Sherston Brick Club'

British Schoolroom

Friday 11th & 25th March

5.30 to 6.30pm - Junior Brick Club:
reception 8 years

6.30 to 8.00pm - Brick Club:
8 years upwards

Didmarton

Duke of Beaufort's Hunt Point to Point

First Sat in March - 5 Mar First race starts at 12.30. Countrywear tradestands, refreshments. Wrap up warm against the wind as course very exposed. £10 entry to the racecourse. Parking on site (chargeable). For further details call or visit <http://www.pointingwm.co.uk/course-details-and-maps/didmarton/didmarton-news/>

Flicks in the Sticks

Brooklyn Fri 11 Mar Doors open 6:30pm for 7.30pm start. Cash bar £3 in advance £3.50 on the door Didmarton Village Hall For further details call Jenny Body 01454 238358 or jenny.body@btconnect.com

Malmesbury MP's Surgery

Local MP surgery with James Gray MP 12pm - 1pm
Sat 19 Mar Hobbes Parlour, Malmesbury Town Hall For further details www.jamesgray.org or email jamesgraymp@parliament.uk for online surgeries

Malmesbury Abbey Music Society

Choir of St Martin in the Fields Sat 5 Mar A programme of sacred music £15 members/ £5 student or chd. Season tickets are also available for only £55

For further details call David Barton 824924
d.barton763@btinternet.com or visit www.malmesbury.com/mams

Events at Malmesbury Children's centre

Workshops for toddlers, infants and new parents Free parenting courses for parents with children under 5 - check website for details free crèche Malmesbury Children's Centre For further details call 825566 or email: malmesburycc@spurgeons.org or visit www.malmesburycc.org

Malmesbury Youth Fair

Malmesbury Town Council is very keen to help to promote the many activities available in the town for young people and to

Traditionally finished COTSWOLD STONE
of the very finest quality
direct from our quarry



Walling Stone •
Building Stone •
Roofing Tiles •
Garden Stone •

Tel: **01666 840443**
Fax: **01666 840191**

www.knockdownstone.co.uk
Knockdown Stone,
Halfway Bush Farm, Knockdown,
Tetbury, Gloucestershire GL8 8QY



Hand-made, Bespoke
Kitchens & Interiors

WOODCHESTER
Cabinet Makers

Unit N6A Inchbrook Trading Estate
Woodchester Nr Stroud
Gloucestershire GL5 5EY Tel 01453 835580
www.woodchestercabinetmakers.co.uk

encourage young people to get involved in their own community.
Sat 19 Mar 10am-3pm - no charge to organisers, tables will also be provided

For further details email tic@malmesbury.gov.uk to secure your place.

Singing for the Brain

Singing sessions are led by a trained Singing for the Brain leader. Every other Monday 1.30-3pm a free service (funded by Wiltshire council) is designed to be a fun, stimulating and social activity for people with a diagnosis of dementia and their family/friends or carers.

Malmesbury Activity Zone, Bremilham Road

For session dates and to book your place, please call Pam Ollis at our Chippenham office on 01249 443469 or e-mail nwiltis@alzheimers.org.uk

Malmesbury & District University of the Third Age

U3A is a unique organisation which provides educational, creative and leisure opportunities for retired and semi-retired people to come and learn together, drawing upon the knowledge, experience and skills of their own members to organise and provide interest groups in a very wide range of subjects. Now with over 350 members in the Malmesbury group. Meet on the 4th Thursday of the month at 10am for refreshments 10.30-11.30 speaker close by 11.45 Charge 50p

This is Jazz - Alan Cornell Thurs 24 Mar

Bletchley Park Day Trip Book the date - Thur 14 Apr 2016 cost £35 incl entrance and coach travel max 30 places so please contact Judy Paginton at secretary@malmesburyu3a.org.uk Assembly Rooms at the Town Hall

For further details call Membership Secretary Julia Batty on 01249 720327 or visit www.malmesburyu3a.org.uk

Grittleton Moviola - the Touring Rural Cinema Scheme

The Lady in the Van [12A] Wed 30 Mar Doors open 7pm for 7.30pm start £6 from Lesley or on the door
Grittleton Village Hall

For further details call Lesley 01249 783157 or email L_palmer@btinternet.com or visit www.moviola.org

Crudwell

North Wilts Villages Flower Club

Imposed workshop The resulting arrangements will be judged by those attending the evening and will be used as part three of our annual competition. 16-Mar Flower club meetings take place on the 3rd Wed each month, 7 for 7.30pm. If you enjoy flowers come and join us, visitors and new members are welcome.

Inspirations Demonstration by Margaret Murray from Bradford on Avon flower club 20 Apr

All That Glistens Demonstration by Linda Garratt 18 May The competition this month to be a "golden arrangement", there are two levels improvers and experienced, all entrants welcome.

Crudwell Village Hall SN16 9HB

For further details call Margaret on 01285 770 639

Wotton-Under-Edge The Electric Picture House

A refurbished local cinema run by volunteers from the local community. This month: Spotlight; The Big Short; The Assassin; Oddball and the Penguins; NT Live (Encore) As You Like It; Youth; Alvin and the Chipmonks 2D; The Railway Children check website for details

Films: Amy; Love and Mercy; The Globe on Screen: Comedy of Errors; RSC Live Othello Wed 26 Aug; NT Livr: The Beaux Strategem Thurs 3 Sep; NT Live Coriolanus (Encore)

For further details call 01453 844601 or visit www.wottoncinema.com

Nailsworth Forest Green Rovers F.C.

Professional football only 20 minutes drive from Sherston. Home matches: Fri 4 Mar 7.45pm v. Grimsby Town; Sat 26 Mar 3pm v. Aldershot Town Adults £17/£15, Concessions £13/£11, under 16s £9/£7 junior £6/£4 Adults £15/£13, Concessions £10/£8, under 16s £2
The New Lawn Forest Green Nailsworth

For further details call 01453 834860 or visit www.forestgreenroversfc.com

Bath, Stroud, Bristol Covent Garden Royal Opera House and Ballet @ the cinema

Live and pre recorded screenings of opera and ballet from the ROH Covent Garden

Opera: Boris Godunov 21-Mar Ballet: Giselle 6-Apr

Opera: Lucia di Lammermoor Ballet: Frankenstein 18-May

Opera: Werther 27-Jun

Stroud Apollo, Odeon Bath and many other Cinemas

For further details call 0871 220 6000 or visit www.roh.org.uk/cinema

Malmesbury, Chippenham, Bath, Stroud, Bristol, Wotton National Theatre Live

Live and pre recorded screenings NT Live: Hangmen Thur 3 Mar

For further details, call or visit www.ntlive.com

Bath Theatre Royal

Toast 7-12 Mar £15-£33.50 The Gruffalo's Child 8-13 Mar, Private Lives 4-19 Mar, West Side Story 22-26 Mar
Book ahead for: Rehearsal for Murder; Single Spies; The Herbal Bed; Goodnight Mr Tom

For further details call 01225 448844 or visit www.theatreroyal.org.uk

Bath Literary Festival

The Independent Bath Literary Festival Fri 26 Feb - Sun 6 Mar
Various events throughout Bath city centre by over 200 authors and actors Tickets vary from £4-£17 For further details call 01225 463362 or visit www.bathfestivals.org.uk

Cheltenham The Festival

Tues 15 - 18 Mar with Ladies' Day on Wed 16, St Patrick's Thursday 17 and The Gold Cup Fri 18 Check website for more details from £22 (except Gold Cup Friday from £40)
Cheltenham Racecourse For further details call 0844 579 3003 or visit www.cheltenham.co.uk/racing/fixtures/the_festival.html

IAN ASHBY
(SHERSTON)

Private hire
6 seat taxi

07875 844463
01666 841224

Guaranteed seasoned logs and more...

Friendly and reliable local supplier

01453 808330

or buy online at www.elcombefirewood.co.uk

Elcombe
Firewood

woodsure
Find us on facebook.



Sherston
Busy Hands
Pre-School

9.10am-12.10pm everyday in the Village Hall...
Now with Lunch Club until 1pm Monday to Friday

Age 2 3/4 - 5 years
New outdoor free flow play area
Come along for a taster session!

call us on 07841 571943 or 01666 841062
email us on chair@sherstonbusyhands.org.uk
visit us at www.sherstonbusyhands.org.uk

Registered charity no. 296903

EMERGENCY RESPONSE

If you are in immediate danger call 999

The public version of Sherston's Emergency Response Plan can be found on the Sherston website:

www.sherston.org/downloads/sherston-parish-council-emergency-plan/Sherston-Emergency-Plan-REDACTED-20-11-2015.pdf

Sherston Emergency Response Coordinator

Jill Cainey

841380

3 Noble Street

emergency@sherston.org.uk (only during an incident)

Wiltshire Council

Highways, Social Care, Emergency Transport

24hr telephone contact: 0300 456 0100

EPRR@wiltshire.gov.uk (only during an incident)

Floods: 0300 456 0105 or drainage@wiltshire.gov.uk

Useful Information

Wiltshire Council Online Gritting routes

www.wiltshire.gov.uk/parkingtransportandstreets/roadshighwaysstreetcare/gritting.htm

Utilities

ELECTRICITY – SSEPD Power track

www.ssepd.co.uk/Powertrack

0800 072 7282 or 0345 072 1905 from a mobile phone

WATER – Bristol Water

www.bristolwater.co.uk/contact/

Emergency Helpline: 0345 702 3797 (24 Hour)

WATER – Wessex water

www.wessexwater.co.uk/Contact-us/

Emergency Helpline: 0345 600 4 600 (24 hours)

BBC Wiltshire can be heard via:

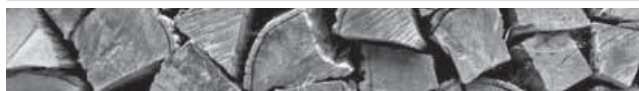
West Wilts area

(Chippenham, Devizes and Trowbridge): 104.3FM

Useful Numbers

BT fault line	0800 800151
CLARENCE (Highway complaints)	0800 232323
Cllr John Thomson	01666 840785
Malmesbury Activity Zone	01666 822533
Malmesbury Library	01666 823611
Malmesbury Police 101	(emergency 999)
Malmesbury Primary Care Centre	01666 825825
Malmesbury Secondary School	01666 829700
Malmesbury Youth Centre	0799 0908550
MP James Gray	01249 652851
NHS Direct	0845 4647
Sherston Parish Council	01666 840197
Sherston Post Office	01666 840456
Sherston School	01666 840237
Sherston Village Hall (bookings)	01666 841377
Tolsey Surgery	01666 840270
Wiltshire Council	0300 4560100

FIREWOOD



SEASONED ASH	07972943800
FIREWOOD	01454238787
AVAILABLE IN	EMAIL
VENTED 1M3 BAGS	tim@wattsandwattsld.co.uk
WITH FREE LOCAL	d.co.uk
DELIVERY.	
£55 PER BAG.	

M.Vincent Windows & Glazing

For all your glazing needs
Wiltshire & Gloucestershire areas
Fast, friendly and efficient service
Available at your convenience 7 days a week
CALL FOR YOUR FREE QUOTATION
07890 138453 / 01666 460106
enquiries@mvincentwindows.co.uk
www.mvincentwindows.co.uk

SHERSTON DRIVING SCHOOL

Michael Holborow A.D.I.

Tel: 01666 840327

Mobile: 07790890978

mike@sherstondriving.co.uk

The Angel Boutique Bed & Breakfast and Tearooms Sherston High Street

Tearooms open 8-5 daily

01666 840039

www.sherstonangel.co.uk
tara@sherstonangel.co.uk