



## Sherston Advent House Trail 2020

With the Sherston Arts Festival



We may all be in need of a little extra sparkle this year and the first ever Sherston Advent House Trail aims to do just that with well over 100 houses taking part! Take a look at the map (centre pages 14 and 15) to see which houses and businesses are decorating and lighting up their windows or gardens each night (5.30pm-8.30pm) right up until 24 December. It could start a tradition of a magical family walk each night before dinner or make taking a stroll with your dog more fun on a chilly evening.

The full trail will take place on 23 December, with all the Advent Houses illuminated - hopefully, it will be a crisp, starry night as we wander around (socially distanced!) enjoying our village. We have a mini trail of all the Advent Houses numbered 1-5 on Saturday 5 December to help kick off Christmas too! Holy Cross Church will host a very special advent display on 24 December.

If you fancy joining in and decorating a window or your garden, there is still time - the more, the merrier! We can add you to the map on the Arts Festival website - which will be updated daily in December. Check out the details on the site: [www.sherstonartsfestival.com](http://www.sherstonartsfestival.com).

Don't forget to observe social distancing and the relevant government guidelines when you are out and about looking at Advent Houses and thank you to everyone taking part in making Sherston all the more magical. Merry Christmas!

## Sustainable Sherston's website is launched!



After much delay, not least because of Covid-19, we are delighted to announce the launch of [www.sustainablesherston.org.uk](http://www.sustainablesherston.org.uk)

Sustainable Sherston is a voluntary community group of residents from Sherston and the surrounding villages who have come together to take action on the climate and ecological emergency at a local level. It's been a year since about 100 of us first came together at the British School Room and on Facebook so, after months of lockdown, we are keen to kick-start our group and push forward with initiatives to help address climate change.

The website includes details of our current projects, including tree planting and biodiversity, waste minimisation, renewable energy and efficiency, sustainable food, and campaigning. The website also contains details of the climate emergency, lists of useful resources and dates of our events. We are planning to start issuing a regular newsletter by email to complement our Facebook page and keep our supporters up to date with what we are doing.

Our group is open to all and relies on volunteers, so please get involved! Take a look at our website and Facebook page, and please email us if you would like to be on our newsletter mailing list at [sustainablesherston@gmail.com](mailto:sustainablesherston@gmail.com). It would be great to hear from you!

**Major Large Scale  
Planning Application  
info on pages 4-7**

# Cliffhanger advertising volunteer needed

The Cliffhanger is entirely run by volunteers and has a very important role in passing on the Parish Council's news as well as publicising the social activities of the village.

The current advertising volunteer, Tahiti van Rooyen, is 'retiring' after four years in the post so a new volunteer is required.

The role involves booking in any new ads, issuing invoices on behalf of the Parish Council etc.

So if you would like to contribute to the village in this small but vital way, please contact:

[info@sherstoncliffhanger.co.uk](mailto:info@sherstoncliffhanger.co.uk)

**Copy deadline:** 10<sup>th</sup> of the previous month.  
**Send to** [editorial@sherstoncliffhanger.co.uk](mailto:editorial@sherstoncliffhanger.co.uk)  
or hard copy to Sherston Post Office Stores.

**What's On:** contact Caroline Moore at  
[info@sherstoncliffhanger.co.uk](mailto:info@sherstoncliffhanger.co.uk)

The size and content of the Cliffhanger depends entirely on the amount of copy we receive from individuals and groups. So, if you feel you have something of interest, please don't hesitate to tell us. Around 400 words would be a maximum but the shorter the better and less editing would be needed.

**Top tip:** if you're telling us of an event coming up, write a short piece about it rather than just supply basic details or a poster. You will then get a short article published to help boost interest as well as a mention in our What's On section. Don't forget to tell us how your event went, with a photo if possible.

**To advertise, contact:**

Tahiti van Rooyen

[advertising@sherstoncliffhanger.co.uk](mailto:advertising@sherstoncliffhanger.co.uk)

Advertising rates:

for 12 months:

1/4 page £280; 1/8 page £150; and 1/16 page £70

for one month:

1/4 page £80; 1/8 page £50; and 1/16 page £30

Whilst every effort has been made to ensure the accuracy of advertisements contained in this publication, Cliffhanger cannot accept any liability for errors and omissions. Inclusion of an advert should not be taken as an endorsement by Sherston Parish Council.

Please remember the Cliffhanger is delivered free to every home and business in the parish – approx 1000 copies. This and all previous editions are also available online at [www.sherston.org.uk](http://www.sherston.org.uk)

PRINTED BY THE COMPLETE PRODUCT COMPANY, PINKNEY

## Mike Tarrant

After 35 years' maintaining the cars of Sherston, Mike is retiring!

Mike started at Grays of Sherston in 1984. Way back then, my father and I were greatly involved in 24-hour vehicle recovery, and the workshop was made available to Mike who at the time was a self-employed mechanic.

This arrangement changed after my father retired in 1993 and Mike took on the role of Workshop Manager for Grays with help from two mechanics.

In 2005 I stopped the recovery side of the business and started working more in the workshop alongside Mike pretty much as we function today.

He is a familiar face not just at the garage but also through 1016, fireworks, choir and Boules Day so hopefully we shall all still see him busy around the village.

But after many years of loyal service he will finish at Grays at Christmas - although he may make guest appearances doing holiday cover!

Nicky and I would both like to wish both Mike and Lesley a very happy retirement.

Paul

## Christmas Bazaar Cancelled

The alternative Christmas Bazaar is, sadly, cancelled, due to new restrictions coming into force after 2 December. We are really sorry to disappoint those people who were looking forward to starting off their Christmas celebrations, albeit in a reduced fashion, at the Church Bazaar on the 5 December. Thank you to anyone who had promised to help, provide goods, make cakes etc.

However, not deterred, we are planning, when allowed, to arrange a Spring event along similar lines in aid of the Church. Watch this space for details of the date.

Powered Spaces Ltd

### Electrical Services

Local and reliable

Free, no obligation quote.

Outdoor lighting specialist.

Fully insured and registered.

Local references available

Please call on: 01453 860084

Mobile: 07775505375

Email: [mark.hanson@poweredspaces.com](mailto:mark.hanson@poweredspaces.com)



## Free Sustainable Sherston Zoom Talk: Isabel Losado, author of 'The Joyful Environmentalist'



On Thursday 17 December at 7.30 we will be having our first Zoom event, a talk with the author Isabel Losado. She will be beaming through to us from London, telling us about her latest book 'The Joyful Environmentalist'; her experiences, encounters and the people she met on her journey to find out how she could help to save the planet. Please join us for what promises to be an entertaining evening, with some laughs and encouragement from this well-known author.

To register for the event please sign up via Eventbrite. A link can be found on our website or Facebook page.

[www.sustainablesherston.org.uk](http://www.sustainablesherston.org.uk)



**TALLY HO TRAILERS**

**Horse Trailers**

New and Used  
Sales - Service - Repairs  
Van Fautras - Cheval Liberté  
- Ifor Williams

[www.tallyhotrailer.co.uk](http://www.tallyhotrailer.co.uk)  
tel: 01666 841149  
or 01452 814152

## Around the World in 80 Days



### Scouts

1st Sherston  
(John Rattlebone)



As we mentioned in the November Cliffhanger, at this time of year, Sherston Beavers, Cubs, Scouts and Explorers would usually be collecting hamper goodies and selling raffle tickets to raise money for our scout hut, but as Covid restrictions mean we can't do that this year, we are collecting KILOMETRES instead.

We will walk, cycle, swim, hop, jump or crawl and see how far we can get around the world in 80 days. It's only 40,075km, how difficult can it be! The challenge started on 13 October and finishes on 31 December.

The important part is the sponsorship ... if you would like to show your support by donating, please go to: <https://justgiving.com/campaign/80days>

Thank you - and merry Christmas!



**Shear Class & Serenity**

Uni-Sex Hair Salon and Beauty Salon  
Sherston 01666 840840



**Tuesdays - Saturdays**  
**Late Opening and Reduced Rates for**  
**Senior Citizens on Thursdays**

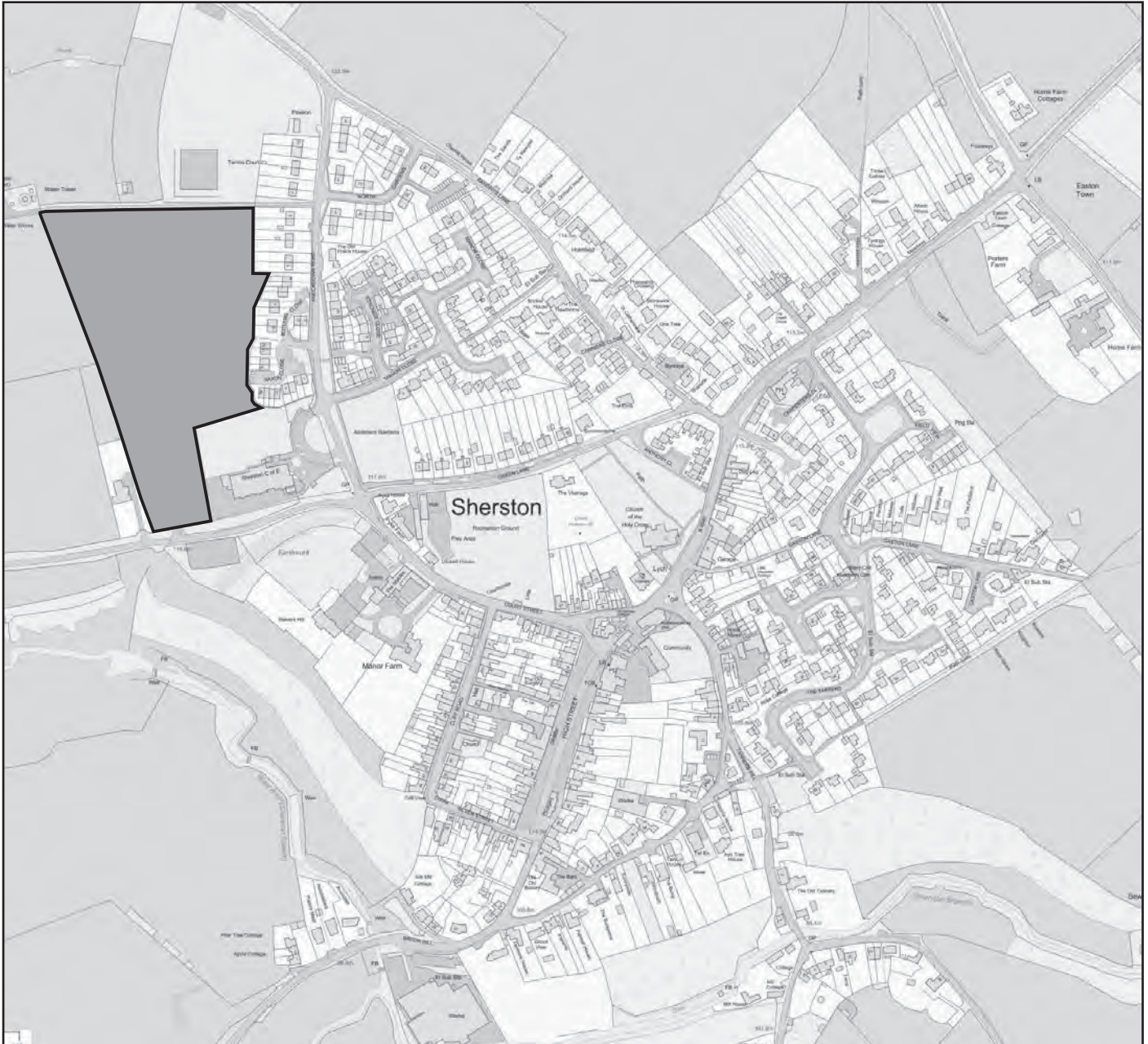
*For all your Hair & Beauty*  
*Treatments*  
*Appointments not always necessary*  
*please call in*

**MATRIX**

**BIOLAGE**



# Comments Please



An application has now been made for a development of 45 homes plus a GP surgery on a site behind the school, between Sopworth Lane and the water tower. Full details are on the Wiltshire Planning website - reference 20/08205/FUL. This includes places of between one and five bedrooms. The development will include nine affordable homes, which will be rented out to local families by either Wiltshire Council or a housing association.

The parish council broadly supports this application. This area was allocated for housing in the Neighbourhood Plan. By building in accordance with the plan, we are less likely to it being ignored and getting much larger developments foisted on us.

There are a number of planning issues to be settled. In particular the number of affordable houses is less than the percentage specified in our plan; however we will be getting a fully finished surgery, not just a plot. The planners will decide if that is an acceptable trade.

We also want more environmentally sensitive heating than the LPG systems proposed, better landscaping, and parking at the surgery for vehicles such as blood donation units and mass X-ray visits.

An area will be left for future expansion of the school.

Comments can be made online on the Wiltshire Council planning website, or sent by post to:

Wiltshire Council Development Management  
North,  
Monkton Park  
Chippenham  
SN15 1ER

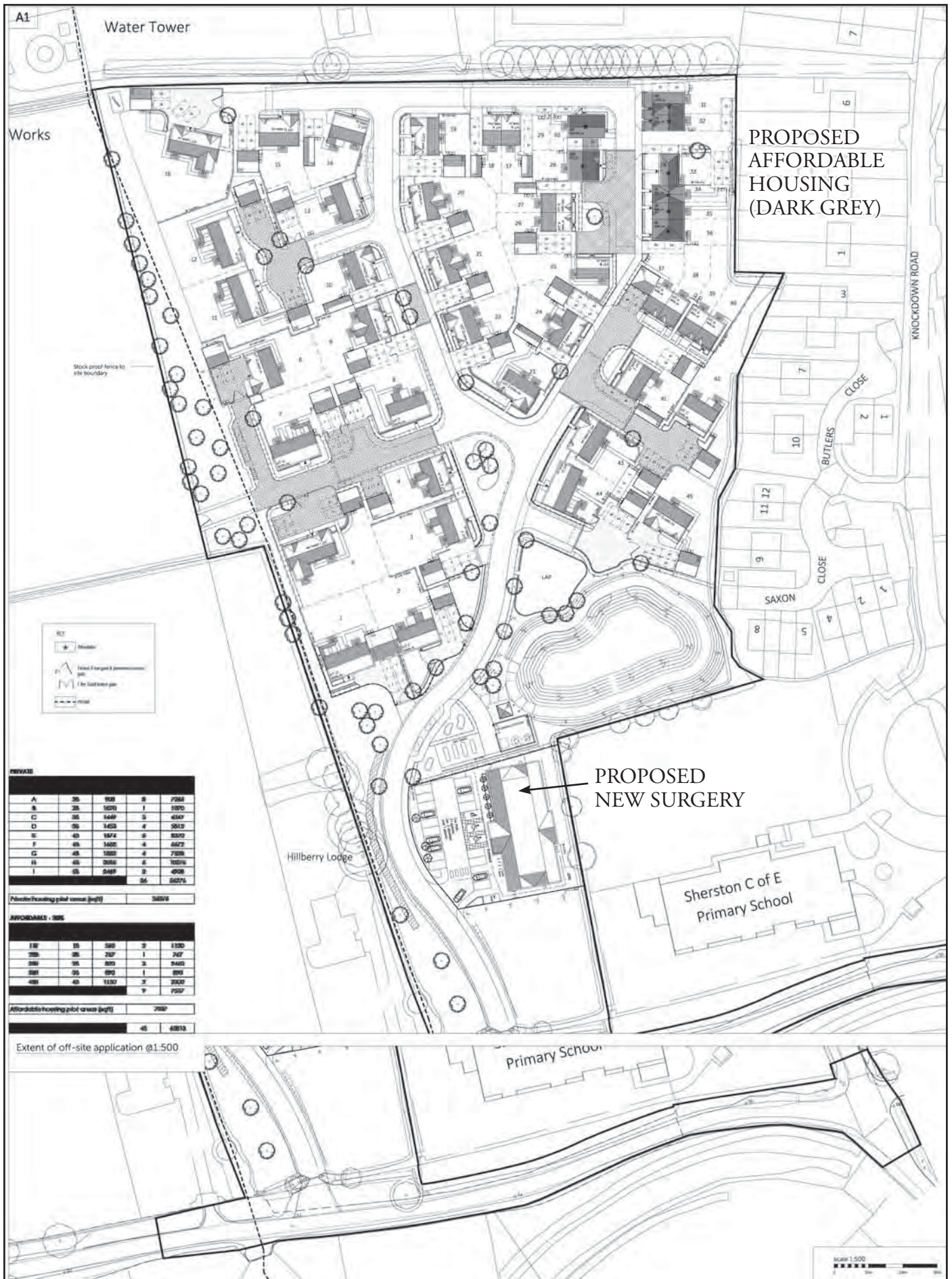
Please submit any comments as soon as you can as the cut-off date is 20 December.

Any queries please do contact me at [p.cutcher@sherston.org.uk](mailto:p.cutcher@sherston.org.uk)

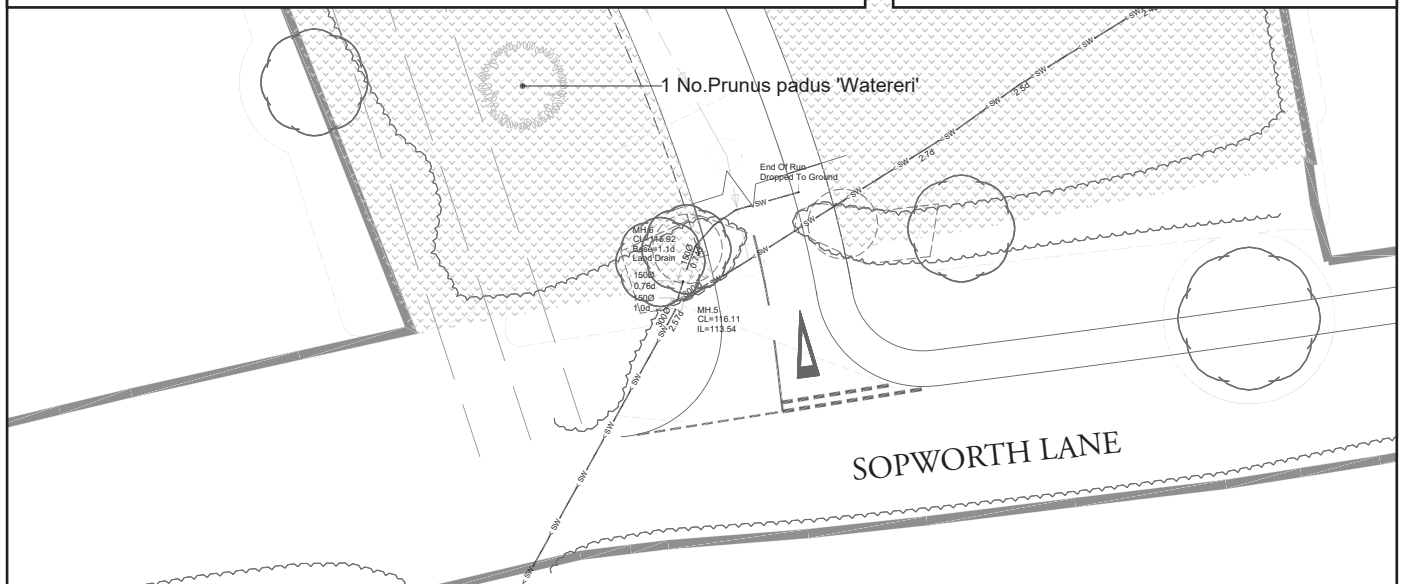
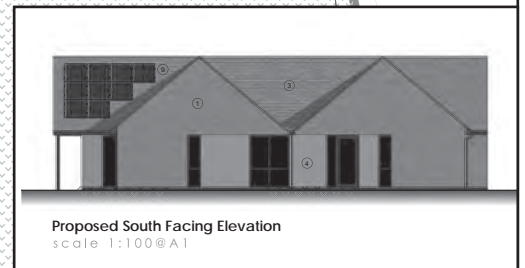
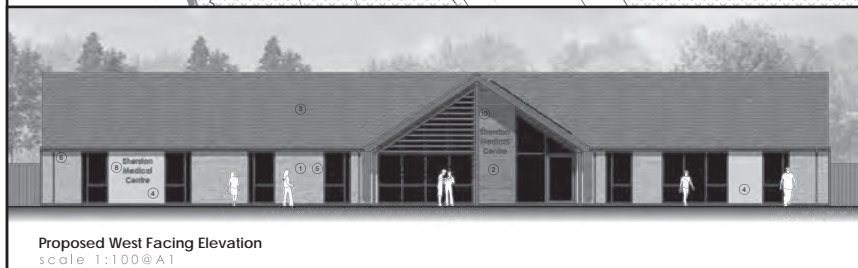
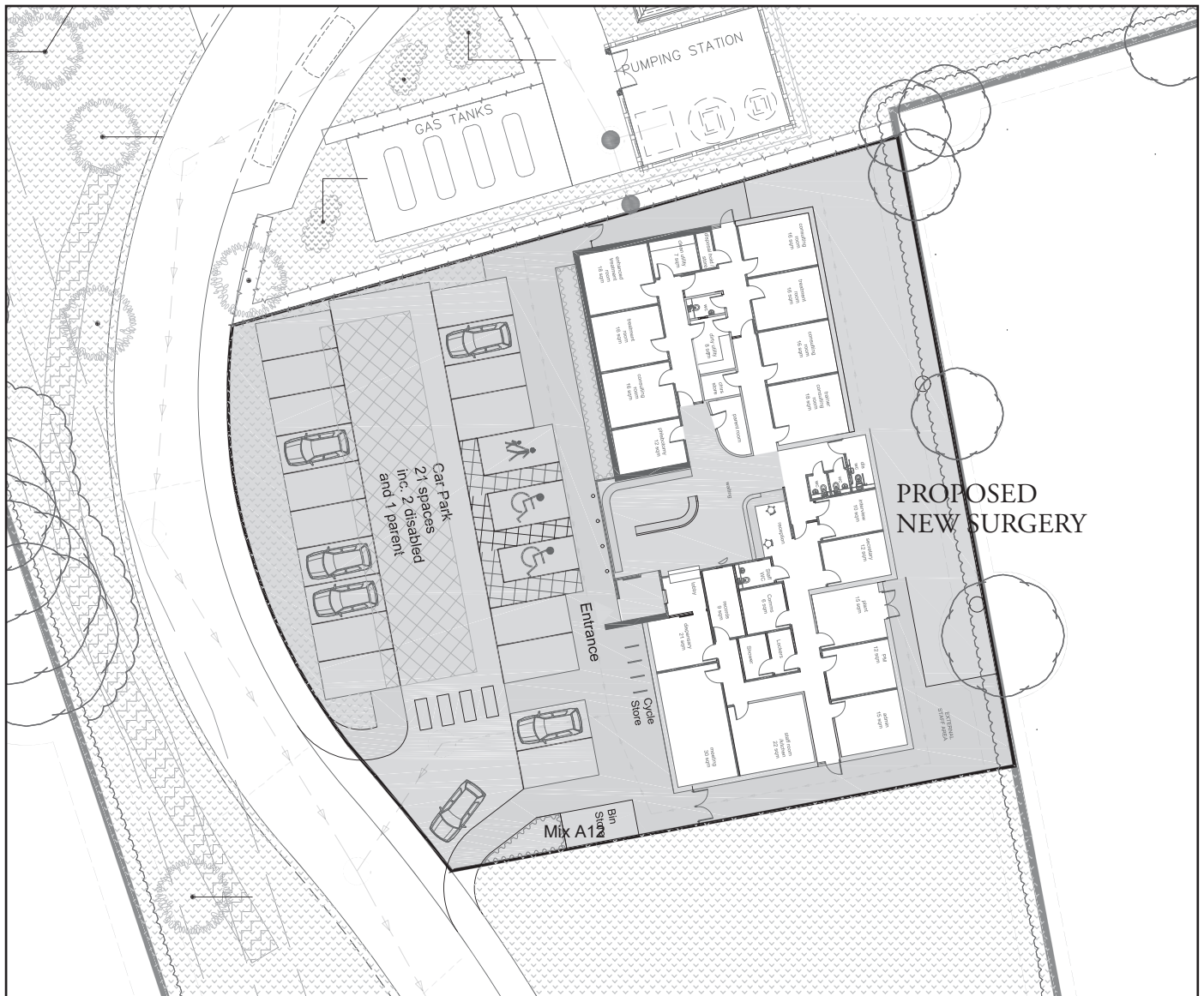
*Phil Cutcher*

THIS AND ALL PREVIOUS ISSUES ARE AVAILABLE TO VIEW AND DOWNLOAD AT [WWW.SHERSTON.ORG.UK](http://WWW.SHERSTON.ORG.UK)









## PRIVATE HOUSING x 36



3 BED x 8



3 BED x 1



3 BED x 3



3 BED x 4



4 BED x 5



4 BED x 4



4 BED x 4



4 BED x 5



5 BED x 2

## AFFORDABLE HOUSING X 9



PLOTS 28-30



PLOTS 31 &amp; 32



PLOTS 33 -36



# Sherston's Covid-19 Remembrance Service



Sherston's Remembrance Service was a quite different affair this year, with the rector and four others conveying the Act of Remembrance to about 50 veterans and their households. Absent were the ranks of 9 Regt RLC and not to be seen were the youngsters of the village, many of whom make up the youth organisations. Sherston's service normally attracts hundreds of people but this year they were asked to stay at home and mark their Act of Remembrance for two minutes on their doorstep or at their front gate.

The Commemoration was led by the new rector, Rev'd Adam Beaumont assisted by:

Councillor John Matthews, who laid a wreath on behalf of the Parish Council and the village. He recited 'They shall not grow old'.

Lt Col Nick Grant Thorold, who laid a wreath on behalf of the officers and soldiers of 9 Regiment Royal Logistic Corps.

Lt Col Professor Linda Stevens OBE, who laid a wreath on behalf of Holy Cross Church and recited the Kohima Epitaph.

Rev'd Andrew Williams Tarling, who laid a wreath on behalf of the Congregational Church and read the names of the men fallen in conflicts from Sherston and Easton Grey.

Eleven o'clock was chimed by doctors Pip and Jim Bartlett because the clock is broken. The stewards, who were managed by Sqn Ldr Jim Robinson, included: Phil Cutcher, Lt Cdr Christopher Morgan, Wg Cdr Dr Pam Pickthall, Sue Robinson and Suzanne Price. Nigel Freeth kindly stepped in and organised the road closures. Roger Whitehouse, without his cross this year, stage-managed the event and completed all those extra tasks. The service was streamed on Facebook and the rector's wife, Sheona, was the camera woman. We are grateful to Anthony Price for the loan of the PA system and Mike Whatley for his technical advice with the sound. Thanks go to Paul Ormiston for designing the excellent Order of Service.

The collection for the Poppy Appeal amounted to £210.

*Wg Cdr Chris Pickthall, organiser.*



**SHERSTON CONGREGATIONAL CHURCH**  
In the British Schoolroom, Cliff Road, Sherston

**Please contact**  
**Andrew Williams Tarling on**  
**07921 390878 or**  
**awtcharfield@hotmail.co.uk**

Do you want to know  
**YOUR**  
**FAMILY HISTORY**

Skeletons in the cupboard,  
convicts, statesmen, rich  
man, poor man,  
beggar man, thief?  
We all have them and they  
are hiding there waiting to  
be found.

Let me find them for you.

**Beryl Clampton**

Call anytime: 01666 841201  
or 07850 623517  
e-mail: beryl@clampton.com

**C.J. GOUGH**  
**PAINTER &**  
**DECORATOR**

**41 The Tarters,**  
**Sherston,**  
**Malmesbury,**  
**Wiltshire**  
**SN16 0NT**

**Telephone:**  
**01666 841003**



## MAN FOR ALL SEASONS

WILL UNDERTAKE  
ALL HOUSE/GARDEN  
MAINTENANCE  
NO JOB TOO SMALL

From

CUTTING HEDGES,  
WEEDING THE GARDEN  
& CUTTING DOWN TREES

To

PAINTING & SMALL JOBS  
IN THE HOUSE

ALL MACHINERY PROVIDED  
- LOG SPLITTER AVAILABLE

01666 825463

## Firewood

Dry seasoned,  
hardwood logs

Barn stored

any size available

Also kindling sold in nets

Delivered to your door

For more details call Steve on

01454 232941 or

07974194012



## Thinking of Working from Home?

Bespoke Gardens and Garden Buildings by  
Sage Garden Design

sagegardendesign.co.uk  
chris.sagegardendesign@gmail.com

## PAWS FOR THOUGHT

### PROFESSIONAL DOG WALKING AND MINDING SERVICE

- Bespoke service for you & your dog
- Experience in handling both large & small dogs
- Fully insured in all aspects of dog care
- Knowledgeable in canine first aid, training and obedience
- Group or individual walks available
- Established & recommended for 6 years

**Animal Minding Service** also available for cats & domestic pets. Animals are happier & more secure in their own environment. Daily visits provided to include feeding, grooming, tlc & medication if required

Please call **Sophie Francis** on **01666 840538**

or **07531 057016**

References available  
on request



## Lumley Garden & Pet Supplies

Stainsbridge Mill, Gloucester Road, Malmesbury, Wiltshire, SN16 0AJ

Tel: 01666 822325 E-mail: [etlumley@googlemail.com](mailto:etlumley@googlemail.com)

[www.lumleypetsupplies.com](http://www.lumleypetsupplies.com)



❖ Top Leading Brands of Food & Treats ❖

❖ Our Own Label Premium Dog Food ❖

❖ Bowls, Toys & Accessories ❖

❖ Beds & Cushions ❖

❖ Wild Bird Food & Products inc. Live Food ❖

" for you and your pet's every need. "

Delivery Service Available

**sharpes**  
WINDOWS AND DOORS

High quality and performance  
you can rely on...



Call now for a  
**FREE**  
Quotation

- Windows and Doors
- Bi-Folding Doors
- Heritage Windows
- Fascias and Guttering
- Composite Doors
- Conservatories
- Composite Windows

R9 RESIDENCE 9

Solidor

rationel

Truedor



Call us on **01666 840 042**  
[www.sharpeswindowsanddoors.co.uk](http://www.sharpeswindowsanddoors.co.uk)



## Lacock Photography

Know someone interested in photography? Want to give them something extra special this Christmas?

Look no further! Our fabulously festive gift cards are just the ticket! Lacock Photography gift cards can even be personalised, printed and sent to that very lucky person. Simple, thoughtful, and stress-free in other words the perfect pressie!

[lacockphotography.com](http://lacockphotography.com)

Find us on

# Sherston's Swedish houses



*The four dormer style Swedish houses in Easton Square, designated 'type D (rural)'.*

The recent popularity of DIY sustainable housing using mostly wood with its high carbon capture value, is not so new, the Swedish flat-pack revolution appeared in Sherston over 70 years ago.

In 1944, the Ministry of Health and Agriculture was trying to find a fast and practical solution for housing farm workers. Agriculture was necessary to rebuild the country economically after the war.

In 1945, 10,000 prefabricated houses were to be secured from the Swedish Government to address the housing need in rural areas. But due to a restriction on export of currency outside the 'Sterling Zone', only 5,000 houses were ordered. The houses were shipped in flat-pack form between 1945 and 1946. The Ministry of Works supplied fittings, cupboards, fireplaces and bathroom equipment. The houses were erected by local authorities, who arranged for electricity or gas supply, tiling, glazing and painting. The average total cost for materials and erection was £800.

The design was adapted by the Ministry of Works from a standard Swedish kit, with the all-timber houses arriving in flat sections, and then stored at docks for allocation. Swedish houses and bungalows are timber framed and clad in prefabricated vertical tongue-and-groove timber panels which are double thickness with insulation in between. Brick chimney stacks and adjoining walls added to their structural integrity.

The first of these houses were built at Abbots Langley, Hertfordshire, in January 1946 and are still occupied. Often the Swedish houses were erected by prisoners of war before they were repatriated (the POWs, not the

Swedish houses!) The Swedish Government donated 100 timber-framed houses to Scotland, which were erected in two locations in Edinburgh.

Due to the high-quality treated timber used in their construction, many of these houses are still in good condition today and their unique and unusual Scandinavian styling is much appreciated by those who occupy them. One pair of dormer bungalows in Ellers Lane, Auckley, Doncaster is listed Grade II by Historic England.

In Sherston, two houses and four dormer bungalows were erected around 1948 to provide immediate accommodation before the remainder of Easton Square could be built. The two houses have subsequently been demolished and replaced, but the dormer bungalows remain and the Green Square Group have recently upgraded the insulation in two of the properties.

Other local examples can be found at Wotton-under-Edge, North Nibley, Stroud and Uley.

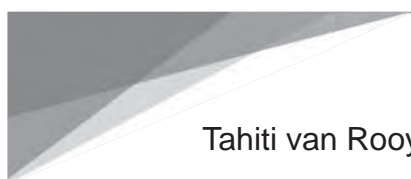
Much of the information presented here is from the fascinating online Prefab Museum at [www.prefabmuseum.uk](http://www.prefabmuseum.uk). This site has details of prefab housing history in the UK, including Swedish house construction details, history, locations and memories of residents.

If anyone has any history, pictures or memories of living in the Sherston Swedish houses, then why not upload them to the 'Sherston Now and Then' Facebook page.

*Two of the Swedish houses were demolished in 2014 to make way for the Field View site.*







Tahiti van Rooyen

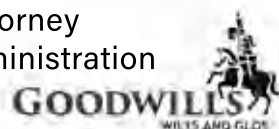
**COUNSELLOR/PSYCHOTHERAPIST**

[www.alliance121counselling.com](http://www.alliance121counselling.com)

[alliance121counselling@gmail.com](mailto:alliance121counselling@gmail.com)

07554 830 299

- \* Will Writing & Estate Planning
- \* Lasting Powers of Attorney
- \* Probate & Estate Administration
- \* Funeral Plans



[www.willsandtrusts.co.uk](http://www.willsandtrusts.co.uk)

Home visit services available from a regulated and experienced law firm with local offices in Malmesbury, Wilts. Goodwills have made over 50,000 wills and 10,000 LPA's since 2003.

Call Goodwills on 01666 744002 for further information or to arrange an appointment



Bathroom



Heating



Service & Repairs



Water Treatment

Based in Tetbury, we are an established family-run business, trusted for over 40 years to deliver reliability and quality workmanship.



plumbing  
and heating

TELEPHONE  
**01666 503 632**

EMAIL  
[info@indplumbingandheating.co.uk](mailto:info@indplumbingandheating.co.uk)

WEBSITE  
[www.indplumbingandheating.co.uk](http://www.indplumbingandheating.co.uk)

## M.Vincent Windows & Glazing

**For all your glazing needs**  
Wiltshire & Gloucestershire areas  
Fast, friendly and efficient service  
Available at your convenience 7 days a week  
**CALL FOR YOUR FREE QUOTATION**  
**07890 138453 / 01666 460106**  
[enquiries@mvincentwindows.co.uk](mailto:enquiries@mvincentwindows.co.uk)  
[www.mvincentwindows.co.uk](http://www.mvincentwindows.co.uk)



## LUCKINGTON PRE-SCHOOL

We are Open 5 days a week & our Parent & Toddler Group will run from Wednesday 2<sup>nd</sup> October 9.30-11am. To find out more check out our Facebook, Website or just pop in.

For more information contact us on  
[chair@luckingtonpreschool.org.uk](mailto:chair@luckingtonpreschool.org.uk)

Visit our website  
[www.luckingtonpreschool.org.uk](http://www.luckingtonpreschool.org.uk)

Or like us on Facebook



Come and see our  
Montessori & Reggio  
inspired Pre-school

Meet our wonderful  
practitioners

Learn about our  
Forest School

Join from 2 ½ -  
school age

Inspiring a life-long  
love of learning



The Green, Luckington,  
Wiltshire SN14 6NU



# School Days - news from Sherston Primary School

## Friendship Week, fresh air learning and festive fundraising!

The children celebrated Friendship Week in October creating some beautiful friendship posters and plaques. They had lots of fun taking part in 'Wacky Socks and Kind Words Wednesday' - a chance to show togetherness, despite not being able to share in activities as a whole school this year.



There was a riot of colour in the classrooms on 'Dress Like A Rainbow' day in aid of Children in Need this year. Thanks to all the children's efforts and generous donations, the school raised £273.50.







November saw the completion of the new outdoor classroom, a fantastic space for fresh-air learning. It's even been given the seal of approval by the local wildlife!



The Friends of Sherston School launched their festive fundraising at the end of November with a Luxury Hamper Raffle. The hampers to be won include a luxury adult hamper, Smiggle boys' and Smiggle girls' hampers, a younger years hamper and a luxury grazing hamper, kindly donated by local Sherston business Truffle & Thyme.

Tickets are just £1 and will be on sale outside the school on Wednesdays and Fridays (contactless payment only). To enable the wider community to support the fundraising efforts, tickets can also be purchased via PayPal: <https://www.paypal.com/pools/c/8uuZRPuXDg>. All tickets purchased will be allocated a number. The full list of ticket numbers and corresponding names will be published before the draw on 20 December.

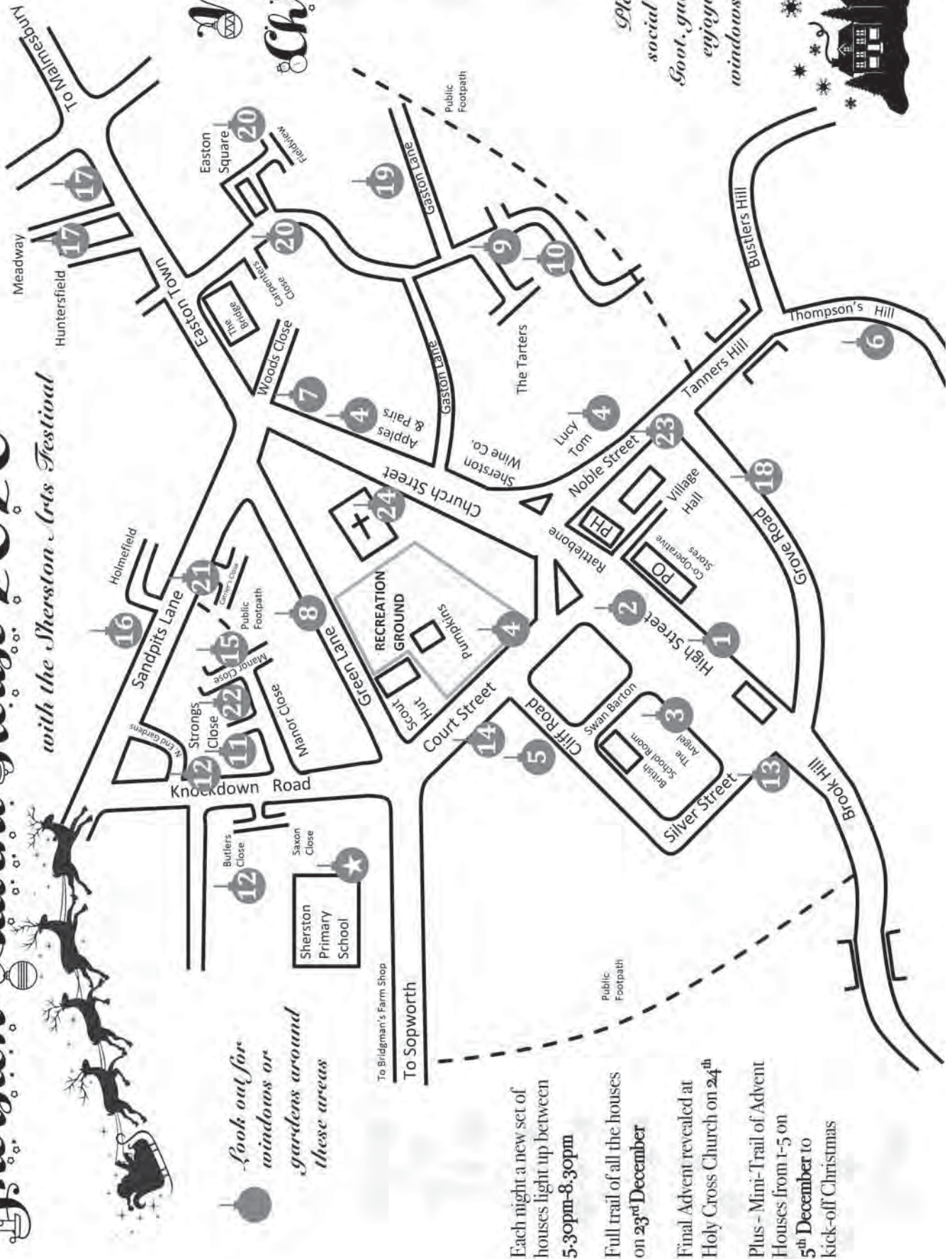
As well as regular updates in the Cliffhanger, you can now keep up with all the latest school news on the brand new Sherston School Facebook page! Just search Sherston Primary School.

PLEASE MENTION TO ADVERTISERS THAT YOU SAW THEIR ADVERT HERE FIRST



# Sherston Advent House 2020

with the Sherston Arts Festival



*Merry Christmas*

*Please maintain & social distancing while  
Boot, guidelines while  
enjoying the festive  
windows and gardens*

*Look out for  
windows or  
gardens around  
these areas*

Each night a new set of  
houses light up between  
5.30pm-8.30pm

Full trail of all the houses  
on 23<sup>rd</sup> December

Final Advent revealed at  
Holy Cross Church on 24<sup>th</sup>

Plus - Mini-Trail of Advent  
Houses from 1-5 on  
5<sup>th</sup> December to  
kick-off Christmas



**1 High Street**  
The Old Pharmacy, High Street  
Boules Christmas Tree

**2 High Street**  
The Telephone Box  
The Old Post Office, 1 High St.  
17 High Street  
15 High Street  
25 High Street

**3 High Street**  
The Angel, High Street  
29 High Street  
37 High Street  
39 High Street

**4 Court Street**  
Ivy Cottage, 9 Court Street  
15a Carpenters Cottage, Court St.  
17 Court Street  
19 Court Street  
Apples and Pairs, Church Street  
Lucy Tom, Noble Street\*

**5 Cliff Road/Silver Street**  
Yew Tree House, Cliff Road  
1 Cliff Road  
6 Cliff Road  
33 Cliff Road  
Cliff View, Silver Street

**6 Thompsons Hill/Tanners Hill**  
6 Tanners Hill  
Kingfisher Cottage, Thompsons Hill  
Mill House, Thompsons Hill  
1 Thompsons Hill  
2 Thompsons Hill  
Elmlea, Thompsons Hill  
Marden House, Thompsons Hill  
Hill House, Thompsons Hill

**7 Church Street/Carpenters Close/Woods Close**  
3 Carpenters Close  
9 Woods Close  
10 Woods Close  
5 Church Street  
21 Church Street

**8 Green Lane**  
Pumpkins Pre-school, The Rec  
1 Green Lane  
5 Green Lane  
14 Green Lane  
Summerstone, Green Lane

**9 The Tarters**  
3 The Tarters  
4 The Tarters  
11 The Tarters  
22 The Tarters  
23 The Tarters

**10 The Tarters**  
33 The Tarters  
37 The Tarters  
38 The Tarters  
44 The Tarters  
46 The Tarters  
50 The Tarters  
51 The Tarters

**11 Strongs Close**  
4 Strongs Close  
30 Strongs Close  
31 Strongs Close  
6 Strongs Close  
7 Strongs Close  
17 Strongs Close  
18 Strongs Close  
23 Strongs Close  
24 Strongs Close

**12 Knockdown Road/Strongs Close/Butlers Close/Northend Gardens**  
1 Knockdown Road  
5 Knockdown Road  
3 Butlers Close  
1 North End Gardens  
2 Strongs Close  
5 Strongs Close  
12 Strongs Close  
15 Strongs Close  
16 Strongs Close

**13 High Street/Brook Hill/Silver Street**  
22 High Street  
36 High Street  
Silk Mill Cottage, Brook Hill  
Avondale, Brook Hill  
5 Silver Street

**14 Court Street**  
The Old Court House, Court Street  
21 Court Street  
Snail Cottage, Court Street

**15 Manor Close**  
25 Manor Close  
21 Manor Close  
18 Manor Close

**16 Sandpits Lane**  
Haefen, Sandpits Lane  
2 Holmfield, Sandpits Lane  
The Hawthorns, Sandpits Lane  
Pheasants Crossing, Sandpits Lane  
Carinya, Sandpits Lane

**17 Hunters Field/Meadway/Easton Town**  
Willow Trees, Hunters Field  
Rowan Lea, Hunters Field  
Three Gables, Meadway  
30 Easton Town

**18 Knockdown Road/Strongs Close/Butlers Close/Northend Gardens**  
1 Knockdown Road  
5 Knockdown Road  
3 Butlers Close  
1 North End Gardens  
2 Strongs Close  
5 Strongs Close  
12 Strongs Close  
15 Strongs Close  
16 Strongs Close

**19 Gaston Lane**  
Pentrich, Gaston Lane  
12 Gaston Lane  
22 Gaston Lane  
24 Gaston Lane  
Midway, Gaston Lane

**20 Easton Square/Field View**  
16b Easton Square  
5 Field View  
7 Field View

**21 Carriers Close**  
2 Carriers Close  
4 Carriers Close

**22 Strongs Close**  
28 Strongs Close  
27 Strongs Close  
26 Strongs Close  
25 Strongs Close  
20 Strongs Close

**23 Noble Street**  
5 Noble Street  
Applewood, 11 Noble Street

**24 Church Street**  
Holy Cross Church

**\* Lucy Tom only during opening hours**

**Sherston Advent House 2020**  
with the Sherston Arts Festival

**Book out for the Sherston School Advent Window**

## Malmesbury & District U3A

Malmesbury & District U3A continues to keep in touch with members with regular editions of the Lockdown News and Zoom events. Some groups are meeting virtually, while others were beginning to meet in other ways - within government guidelines - before the second lockdown.

Our Zoom events during December are as follows

**Thursday 3 December:** AGM at 10.30am

**Thursday 10 December:** Christmas party at 3.00pm. The sparkling Christmas fare will consist of stories, poems, drama, jokes and, if the wonders of modern technology can stretch that far, music and 'communal' singing. Will there be a quiz? Well what U3A event is complete without one?

Our January Zoom talks are as follows:

**Thursday 7 January:** Brazil - Travels through unknown territory reveal the best-kept exotic secrets. Mandy Dobson.

As the wife of a British diplomat, U3A member Mandy Dobson had an eight-year experience of working with national and international communities in Venezuela and Brazil. She developed a wide knowledge of the region and an understanding of national cultures. Mandy travelled extensively and led guided tours in both countries, particularly to lesser known places of interest. Her talk will touch on the background history, the architecture, culture, and flora and fauna of the area, as well as providing an insight into Brasília, the federal capital of Brazil.

**Thursday 28 January:** Oliver Cromwell and his effect on modern democracy. Howard Robinson.

Oliver Cromwell (Howard's nine times great grandfather) is a character who still engenders controversy about what he achieved during the Stuart era. However, Howard believes that Cromwell was, in fact, a great innovator in establishing parliamentary democracy over and above the power of the monarch. During Cromwell's lifetime, this sadly involved execution of the king. 'Cruel necessity!' were Cromwell's supposed words about this event ... but eventually, even after the restoration of the monarchy, Parliament has since had supremacy over the monarch. Not a bad achievement for a Fenland farmer!

Malmesbury U3A is now five years old and we look forward to being able to celebrate this milestone when life returns to normal. If you are retired or semi-retired, do join us. We have more than 500 members and 40 different interest groups, including book group, history, gardening, dancing, languages and walking. Check our website for an up-to-date list of groups and other information: [www.malmesburyu3a.org.uk](http://www.malmesburyu3a.org.uk).

Please contact Elaine Sharp for more information on 823568 or e-mail [membership@malmesburyu3a.org.uk](mailto:membership@malmesburyu3a.org.uk).

THIS AND ALL PREVIOUS ISSUES ARE AVAILABLE TO VIEW AND DOWNLOAD AT [WWW.SHERSTON.ORG.UK](http://WWW.SHERSTON.ORG.UK)

## Sherston village Hall and the National Lottery

For those with a long memory - way back in December 2019, we started our application to the National Lottery to help us build a new front extension to the Village Hall. This would give us a larger entrance hall, with a serving hatch to facilitate serving interval drinks for drama productions, modern, more spacious toilets, including better disabled facilities, and a larger store cupboard.

The National Lottery is supporting our application so far and we have proceeded to the next stage. At this point, they are asking this question:

What difference will this project make to the community?

Please can we have your response to this question to assist us to be successful in our bid. Send to: [heather@geoffmartin.plus.com](mailto:heather@geoffmartin.plus.com) or [bensmee@zoho.com](mailto:bensmee@zoho.com)

If you want a reminder of the proposal, look back at the March and April 2020 editions of the Cliffhanger. If you do so, you will see that we were planning to have a launch of our local fundraising on 4 April. This of course was postponed but there will be a new date for this in the New Year.

Thank you very much.

## Sherston WI



The WI has still not been able to get together for a general meeting with a speaker but we are being kept in touch on matters of importance by both the local Wiltshire Federation, based in Devizes, and also the National Federation in London and there are courses and talks on Zoom. It is very much hoped that by April it will be possible to hold the Annual Meeting at the Royal Albert Hall as planned.

We wondered if there are any relations of the founding committee of Sherston WI living in the village? It transpires that Goug Wilcox, a member of our WI who was born in Sherston, later moved away and has been back living here for a few years, was the god-daughter of Mrs Vining. Mrs Vining herself had no children.



# Sherston Village Hall

## 300 Club

### November 2020

## Draw

1st	78	Nick Holland	£12
2nd	154	Caroline Jarvis	£11
3rd	318	June Godwin	£10
4th	46	Rob Sharman	£9
5th	121	Marion Outlaw	£8
6th	56	Anne Dryden	£7
7th	33	Janette Templeton	£6

Collectors: Anne Andrews, Mary Goulding, Pat Moody, Rachel Moody, Lin Prior, Margaret Thacker, Jill Woodward, Judith Wooliams.

#### Note from Lin Prior, Coordinator of 300 Club

At the end of 2020 I am retiring from 300 Club and will be handing it over to the Village Hall Committee. As to their future plans, I feel sure they will notify the village of these via the Cliffhanger and/or Parish Life.

I would like to thank the collectors for their help during my seven-year tenure, and also to everyone who supported this fundraising venture for the Village Hall.

### Ride On Cycles

The Mobile Cycle Workshop That Comes to You

Full range of servicing & repairs carried out by a City & Guilds qualified mechanic.

Contact Andy on:  
01454 880872 / 07443333219  
andy@ride-on-cycles.co.uk  
www.ride-on-cycles.co.uk

We're family when family can't be there



Driving  
Miss Daisy

For further info  
please contact  
Helen on

**07458 012 460**

\*10% discount  
for first booking  
in February

- \* Your safe, friendly and reliable companion driving service.
- \* We care about making every journey a pleasure and easy.
- \* In Malmesbury and the surrounding villages for anyone unable to drive or feeling isolated but wishing to remain independent.
- \* Appointments, trips, visits and more.
- \* Up to 4 passengers.

www.drivingmissdaisy.co.uk



**PHYSIO EXCELLENCE**  
PHYSIOTHERAPY AND SPORTS INJURIES

**Private physiotherapy  
clinics at Sherston  
and Malmesbury  
doctor's surgeries  
with no waiting list**

Experienced in the diagnosis  
and treatment of:

- All aches and pains, back, neck and joint problems
- 1:1 and small group physio lead Pilates
- Knee and hip replacement
- Shoulder rehabilitation
- Sports injuries
- Hydrotherapy (Nr Chippenham)
- Children, teenage and adult posture

Advice as to whether you need  
an MRI, XRay or consultant referral.  
Recognised by all major insurance

**FOR AN APPOINTMENT PLEASE CALL:  
01249 730 132**

SHERSTON LACOCK CORSHAM MALMESBURY CHIPPENHAM

# A Jaunt through the Years

Another excerpt from the late George Stephens' recollections and stories of bygone life in Sherston that he compiled in 1995.

## Early 20th Century



*Harry Gumm, postman 1920s*

The mail was brought to Sherston from Malmesbury by pony and trap. The Postman's name was Tommy Clifford. After delivering the mail, he would spend the rest of the day in a dugout or cave, which was cut into the side of Tanners Hill between the steps and Sainsbury's Cottage. Here Tommy would weave baskets and cradles, using Withy sticks he had cut from Fairlawn. There are still some growing near to the bridge today. Late in the afternoon, Tommy made his way back to the Post Office to collect the outgoing mail, then he returned to Malmesbury. A Postman later took over from Tommy, his name was Harry Gumm, it was not uncommon in the winter time, (which many people say was much more severe than now) for Harry to become stuck in the snowdrifts, having to wait until help came along to dig his pony and trap out of the snow. It usually occurred halfway to Twatley, (between Easton Grey and Malmesbury). Even today when we get heavy snow (which is now very rare), this is still the worst local stretch of road to encounter.

For a number of years, life in the village of Sherston went quietly about its business. This was sadly shattered as it was for the whole country, when in 1914, Britain, France and Belgium were plunged into war with Germany. Many young men from the village enlisted on a voluntary basis, partly from a sense of duty, partly from the thrill of anticipated adventure. But any thought of glory was very quickly lost in the misery and mud of Flanders. The outcome was a colossal waste of human life on a scale unparalleled. Many young Sherston men never returned. Their names can be found on a stone plaque by the Lych Gates under the Church Porch.

After four years of bitter fighting came the end of hostilities, and the return of the few survivors to a hero's welcome. At the same time mass unemployment took place. A number of Sherston men, unable to find work in or around the village, moved to South Wales, where they found employment in the coal mines. Those that remained became so poor that they were unable to support their families.

Hungry, not able even to buy the most basic of food, they became disillusioned and saddened, but also very angry. After all the promises made to them, 'a country fit for heroes' was awaiting them, they had been told. Even though bitterly disappointed, they showed no violence (one could not have blamed them if they had). They had seen enough violence to last them a lifetime. With people so desperate, a soup kitchen was set up in Easton Town at the rear of the old Police Station. Here a large bowl of soup could be had for one penny, and there was always a long queue.

For the local Gentry (as they were known), the good years were just beginning. Some were very helpful to the village families. This depressing post-war period left a deep impression on the people it affected most, and is still remembered today by their descendants. Government Ministers have always made rash promises at a time of crisis, only to conveniently forget about it once the crisis had passed.

*Printed with permission from the family.*

### Computer Problems?

Home or Business Support

We Come To You !

Fast Service, PC & Laptop Repairs, Virus Removal, Data Recovery  
Wireless Networks, Broadband & Email Setup, Security and Parental Control,  
Hardware and Software Sales. Microsoft Qualified, Local & Friendly.

**Silverchart Systems Ltd**

[www.silverchart.co.uk](http://www.silverchart.co.uk)

**CALL US NOW !**

**01666 840531**

**office@silverchart.co.uk**

Seed Potatoes, Onion Sets

Shrubs, Trees & Hedging Plants

**FOXLEY ROAD NURSERIES**

Herbaceous Perennials & Alpines

Vegetable and Herb Plants

**Foxley Road, Malmesbury**

Tel: 01666 822171

[www.foxleyroadnurseries.co.uk](http://www.foxleyroadnurseries.co.uk)





# Sherston Sewing School

Update from Sue Palmer and Goug Wilcox

National events have overtaken us and because of lockdown, it has been decided to suspend lessons until sometime in the New Year. Those held to date were much enjoyed and appreciated - techniques and abilities were learnt and improved and some sumptuous garments were made (see photos).

Looking for a Lasting Christmas Present?

We are providing vouchers for lessons in 2021. They are a special bargain at £60 per day (five hours' tuition). Contact Goug Wilcox on 07788 558035 to arrange.



**M.P.A CARPENTRY & PROPERTY SOLUTIONS**

**CARPENTER AND JOINER  
SHERSTON**

**40 YEARS EXPERIENCE**

07769336315 / 01666 840434 / Facebook

Contact Mark Andrews

FOR A FREE NO OBLIGATION QUOTE

'FOR ALL THAT'S GOOD IN WOOD'

KITCHENS/BATHROOMS/DECKS/TIMBER  
FLOORS/WINDOWS/STORAGE SOLUTIONS AND GENERAL  
CARPENTRY

TILING/DECORATING/GENERAL MAINTENANCE



**FOREVER  
LIVING  
PRODUCTS**



*Independent Distributor of  
Aloe Vera Based Products*

Improve income or health  
or both. Products sold,  
events organised. 60-day  
money-back guarantee.

Beryl Clampton  
01666841201 / 07850623517  
beryl@clampton.com

**ENQUIRIES WELCOME**

**Stacks**  
PROPERTY SEARCH  
Since 1984

**When finding the  
right home is not  
always as simple  
as black & white**

We find, research and negotiating the  
best outcome for property buyers.

Property Finder for Bath, Cotswolds (North  
Wiltshire, South Gloucestershire), Cheltenham


**Craig Fuller** +44 (0)7767 211707  
craigfuller@stacks.co.uk

  [www.stacks.co.uk](http://www.stacks.co.uk)



**From December 2020 we will be  
located in our brand new premises  
around the corner at Home Farm**

**ALL MAKES OF CARS, FOUR WHEEL DRIVES AND  
LIGHT COMMERCIAL VEHICLES**

-  **MOT Testing Class 4 and now Class 7**
-  **Vehicle Repairs**
-  **Servicing**
-  **Diagnostics**

**Free loan cars  
are available**

**Call us on 01454 238 700  
or visit [www.mottetbury.co.uk](http://www.mottetbury.co.uk)**



**HOME FARM, KNOCKDOWN, TETBURY GL8 8QY**

# Cook and support Tetbury Hospital

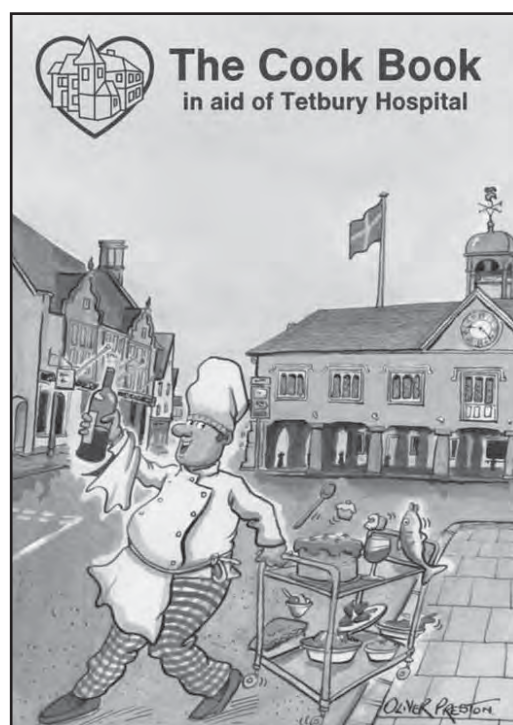


As all face-to-face events have been cancelled this year, it is more crucial than ever to fundraise in support of Tetbury Hospital. You may not know that Tetbury Hospital is an independent charity and therefore does not receive any extra funding from the NHS for new and replacement medical equipment or facilities. The volunteers who form The Friends of Tetbury Hospital Committee have still been holding their regular fundraising meetings, virtually for now, and have been working hard behind the scenes on the exciting launch of The Friends of Tetbury Hospital cookbook and mug.

The cookbook is packed full of delicious recipes, from hearty stews and tasty vegetarian recipes to puddings and drinks - there is something for everyone! It's illustrated by the brilliant Oliver Preston and costs £12.00. The Friends of Tetbury Hospital mugs are beautiful bone china and hand-painted locally by Griffin Bespoke China and cost £10.00.

Both of these would make lovely Christmas presents for friends and family and you'll also be supporting your local hospital at the same time - what could be better!

The Friends will be selling the cookbook and mug at Tetbury Market Place on Saturdays in December. Come and say hello or, if you can't make it and want to buy some, please email [friends@tetburyhospital.co.uk](mailto:friends@tetburyhospital.co.uk) and they will get straight back to you.



**'Sherston Brick Club'**  
British Schoolroom

Brick Club and Cuppa,  
Cake and Chat have been  
suspended until further  
notice.

Go on log on

[www.creativehairdressing.com](http://www.creativehairdressing.com)

Give it a try!!!!



# A Virtual Tetbury Music Festival

The 2020 Tetbury Music Festival was among so many festivals and other events that had to be cancelled during the course of the year as a consequence of the Covid-19 pandemic. However, we are delighted to announce that we have been able to produce a 'virtual' festival in the form of a professionally recorded and filmed video featuring many of the 2020 musicians. At the tail end of the summer, the festival's President and co-Founder, Elise Smith, invited a number of musicians who would have played at the 2020 festival to meet in London to perform a few pieces taken from the Festival programme. Zen Grisdale of the Orchestra of the Age of Enlightenment recorded them and made the video, which is now live on our YouTube channel and can be found via our website: [www.tetburymusicfestival.org](http://www.tetburymusicfestival.org). It aims to bring some of the pleasure of the festival to its many loyal supporters. Please enjoy with our very best wishes:

We thank the artists who took part, and all those who made this project possible, and warmly look forward to welcoming both musicians and audiences back to Tetbury as soon as possible.

Looking ahead to next year, we are in the process of finalising the 2021 October Festival programme and focusing hard on making our plans as Covid-resilient as possible. We hope that we will be able to proceed as normal with ticket sales opening to Dolphin friends in April and to the general public in June but will keep you posted.

If you are not on our mailing list and would like to be kept in the loop, please visit [www.tetburymusicfestival.org](http://www.tetburymusicfestival.org). You can also join our core supporters and become one of our vital Dolphin friends – we would love to have you join us.



Curtains and blinds  
handmade by our experienced team



Socially distanced home visits  
during the pandemic



Extensive library  
of fabric pattern books



In-house  
modern and traditional  
upholstery



Box seat and scatter cushions

*Lucy Tom*

INTERIORS

Sherston soft furnishing studio  
Noble Street, Sherston SN16 0NA

01666 841433  
07813877509  
[lucy@lucytom.com](mailto:lucy@lucytom.com)

Visit our shop for  
Homewares  
Gifts  
Greetings Cards  
and much more!



Take-away  
coffee, cakes, and smoothies  
served from our horsebox!  
*Open throughout the summer!*  
(Indoor cafe service to resume as soon as possible.)



**McGILLS**  
Malmesbury  
Chartered Accountants

## We will help you build your business block-by-block

At McGills we are committed to providing a high quality, straightforward, no-nonsense service, aimed at saving you time, money and tax.

**Tel: 01666 823201**




*Great partnerships start here...*



[www.mcgills.co.uk](http://www.mcgills.co.uk)



**McGills Malmesbury, 1st Floor The Barn,  
Cross Hayes, Malmesbury SN16 9BE**


## HELPING OUR CUSTOMERS GET THE MOST FROM COUNTRY LIVING FOR GENERATIONS





**VISIT OUR COUNTRY STORE**  
Open to the public and trade customers

Animal Feeds  
Animal Bedding  
Gardening Equipment  
Country Clothing  
Footwear









**TH WHITE**  
COUNTRY STORE

Sherston Works  
Knockdown  
Tetbury Glos GL8 8QY  
01454 238181  
[www.thwhite.co.uk](http://www.thwhite.co.uk)

# December/January Events at The Shed



Sadly, we had to shut down in November due to the Government's lockdown rules but, never fear, everything that was scheduled for November has been rescheduled for December or January!

The main event in December is the rescheduled jazz evening: gypsy jazz with Holder and Smith on 12 December at 8.00pm. If you had already bought tickets for the November date, your tickets will be valid for the new date. If you would like to come and haven't booked tickets, we are considering running two events on the same day if there is enough demand so please check on our website.

And panto is the big news for January!

All being well, professional company Wonder Pantomimes from Exeter will be putting on three performances of Aladdin on Saturday 2 January. Details will be on the website.

Looking ahead to the rest of January, we have a full programme of Thursday films – both a matinée and an evening performance each week – as well as a performance by Gerard Logan re-organised from November, Keith James playing music by Yusuf-Cat Stevens and a talk on the artist Vermeer by Fiona James.

We will be adding more events as we confirm them so please check our website or sign up for our newsletter. We are thoroughly Covid-secure and have been certified as such by Visit England.

Finally, just a reminder that The Whistle Stop café remains open for takeaway coffees and delicious meals on Wednesdays 12.00 noon until 4.00pm and Thursdays to Sundays from 10.00am until 4.00pm. There is sheltered outdoor seating available.

All details on our website: [www.shed-arts.co.uk](http://www.shed-arts.co.uk)

## North Wiltshire Villages Flower Club

In common with most organisations, the Flower Club has been unable to meet for many months, with all events arranged for 2020 since February sadly cancelled. Given the recent resurgence of the virus and the lockdown, it is currently impossible to predict when we will be able to get together again. Nevertheless, behind the scenes the committee has remained active and work has continued on planning future events - for next year and beyond.

Although a full programme for 2021 has already been arranged, incorporating several events postponed from 2020, at the time of writing we are in lockdown and it seems very likely that some of these will not go ahead. We will continue to keep you informed through these articles. Fortunately, the club remains in a strong position financially and is run by an enthusiastic committee, so we will get through this difficult period and bounce back.

Our programme is always very varied and includes a good mix of workshops, demonstrations, social events and visits, all incorporating flowers in some shape or form. Meetings would normally take place at Crudwell Village Hall on the third Wednesday evening of the month, with visitors and potential new members welcome. We are a friendly and enthusiastic group with members from throughout the area and really look forward to welcoming both our current members and any guests as soon as we can.

We wish all our members and friends a very happy

Christmas and all the best for the New Year. In the meantime, stay safe and well. If you'd like to get in touch we can be contacted by email: [nwvflowerclub@gmail.com](mailto:nwvflowerclub@gmail.com)

**Malmesbury  
Domestic  
Appliances**

Repairs of : Washing Machines,  
Tumble Dryers, Dishwashers  
and Electric Cookers

Contact: 07766 164159 01666 824652  
[mda4u@hotmail.co.uk](mailto:mda4u@hotmail.co.uk)



**Optimum Mobility**



**Also walking aids, bathing & household aids**

The Old Dairy, Pinkney Park, Near Sherston  
**01666 840060**  
[www.OptimumMobility.co.uk](http://www.OptimumMobility.co.uk)





Allington Bar Farm,  
Chippenham, SN14 6LJ  
Tel: 01249 658112

Open 7 days 9am – 6pm  
Mon – Sat  
& 10am – 5pm on Sundays.

## Quality Local Produce

**Home produced Pork, Lamb, Beef & Goat**

Home Made Sausages & Burgers

Local Free Range Poultry

**All available daily from our Butchery**

**Locally made Preserves, Chutneys & Pickles**

Somerset Jersey Organic Milk & Cream

**Local Cheeses & Home Cooked Meats**

Extensive range of local Ice Cream

**Locally Grown Fresh Fruit & Vegetables**

Homemade Cakes & Pies

**and many more local ingredients .....**



**JAMES PYLE & CO.**

**GOTSWOLD COUNTY**  
Sales and Lettings

## Local Knowledge National Coverage

Call us in complete confidence for  
a **free valuation** and advice  
on all property matters

01666 840 886

jamespyle.co.uk

interested@jamespyle.co.uk

The Old School, High Street, Sherston



*You'll feel at home with  
James Pyle & Co*

## Sherston Auto Services



**01666 840522**

Unit 1, Lordswood Farm, Sherston, Malmesbury SN16 0JZ

**MOT testing**

**Servicing and repairs**

**Tyre fitting and wheel balancing**

**Service indicator reset**

**Diagnostics**

*all at competitive rates*

courtesy car available

free collection and delivery service in the Sherston area



**RYALLS**  
Decorating  
& Building  
Supplies

T 01666 825198 | E sales@ryallsbs.com  
ryallsdecoratingandbuildingsupplies.co.uk

Connect with us ☒ ryallsttd ☒ ryallsmalmesbury

Subscribe to our mailing list  
for the latest news offers

## YOUR LOCAL DECORATING MERCHANT. BIG CHOICE, GREAT PRICES!

VISIT OUR  
DESIGNER PAINT  
SHOWROOM IN  
TETBURY

ASK US  
ABOUT OUR  
PRICE  
MATCH

WITH OVER 20,000 COLOURS ON-SITE  
WE CAN MIX OR MATCH YOUR REQUIRED COLOUR

Stockists of:

FARROW & BALL

Little Greene

PAINT & PAPER LIBRARY

MYLANDS

Frenchic

Dulux  
TRADE

JOHNSTONES

osmo

and many more  
fine brands

**FREE\***  
DELIVERY

Order by 4pm for  
free same day delivery.  
We deliver until 9pm!

\*Based on a radius of 20 miles from GL5 8HW in  
SN16 0BX and a minimum order value of £35  
\*\*Terms and conditions apply

BRANCHES

**RYALLS MALMESBURY**  
Unit 1 Park Road Centre  
Park Road, Malmesbury  
SN16 0BX

**RYALLS TETBURY**  
Priory Industrial Estate  
London Road, Tetbury  
GL5 8HW

HOURS

Monday - Friday 7am - 5pm • Saturday 8am - 1pm

# Groups and Regular Events in and around Sherston

Please note all events and groups listed here below might not have started back yet or might be held virtually due to COVID-19 Corona Virus – please check first.

## Sherston

**Sherston 1016** Fundraising for local good causes and charities. For further details, contact sherston1016@gmail.com or 07717 424619.

**Ashtanga Yoga class** A strong flowing practice for mind and body (beginners to advanced) Fri 10.30-11.45am Sherston village hall. More info – Stuart 07986 003602 stuart@pulse4life.co.uk or www.pulse4life.co.uk

**Sherston Baby and Toddler Group** The group is a fun way for babies, toddlers and their parents to meet and play. Meets at 10 -11.30am each Tues in the British School Rooms with toys for all stages from wrigglers to toddlers, craft activities, music and snacks for all, and a cup of tea/coffee for the deserving parent. For further details contact sherstontoddlergroup@gmail.com or like us on Facebook for regular updates www.facebook.com/sherston.toddlers

**Sherston Badminton Club** We play every Tues evening from 7.30pm in the Village Hall from Sept to the end of May. New members welcome – mixed ages (over 18) and abilities. For more information, contact. David Boyle 841587, 07740 188882 or email djboyle@hotmail.com

**Sherston Brick Club** Brick Club is open to everyone who is a fan of LEGO, so all children of all ages, with only one rule - use your imagination to the maximum! We meet on alternate Fridays from 5.30 to 7pm in the Congregational Church, Cliff Rd. Free Entry

**Sherston Brownies** Meet every Weds during term time 5.45 – 7pm in the Scout Hut. All girls are welcome to join after their 7th birthday, but there is a waiting list. Visit www.girlguiding.org.uk and follow the parents link to register your interest, for all other queries contact Tawny Owl (Nicky) at nicky.gray@btinternet.com

**Holy Cross Church** The Coffee Shop - Fair Trade tea and coffee with homemade biscuits and brownies Easter-Oct Tues, Weds, Thurs and Nov-Easter Thursday only. Both 9.30am-12 noon Sunday services 8am Holy Communion; 1st and 4th - Holy Communion, 2nd - Worship Together - a service for all age groups preceded by breakfast at 9am, 3rd - Family Service preceded by breakfast at 9am See the Parish Life for more details

**Sherston Community Choir** The community choir with conductor Trudi Baker meets at 7.30pm each Wed in term time in the British Schoolroom. £3 per session. All welcome. Further information from Sheila Cutchner sheilacutcher28@gmail.com or 840067, or on Facebook.

**Congregational Church** – in The British Schoolroom. 11am Service, Communion every 2nd Sunday of the month led or hosted by Reverend Andrew Williams Tarling. Sunday School 10.15 – 11am use Cliff Road entrance. Alternating Mondays 8pm, Bible Study or Prayer Group Brick (Lego) Club alternate Fridays 5.30 – 7pm. Contact Minister - Andrew Williams Tarling -minister4sherstonconchurch@outlook.com /07921 390878 Admin/Bookings - Victoria Meheust - sherstonconchurch@outlook.com Secretary.- Candi Williams Tarling - secretary4sherstonconchurch@outlook.com or find us on Facebook.

**Methodist Church** Services every Sunday at 10.30am apart from 3rd Sunday in the month when service is held at Luckington. For further details see the Parish Life

**Church Bell Ringing** Practices are every Wednesday 7.30 – 9 pm. Call Chris Pickthall 841072 or come along.

**Sherston Magna Cricket Club** See website / facebook for fixtures. If you'd like to get involved with local cricket please email cricket@sherstonmagnacc.co.uk or visit the website www.sherstonmagnacc.co.uk.

**1st Sherston Beaver Scout Colony** Beavers is open to both girls and boys aged between 6 and 8 years old. We meet at the Scout hut from 5pm to 6pm on Fridays during school term time. There is a waiting list for Beavers, email join@sherstonscouts.org.uk for an application form.

**1st Sherston Cub Scout Pack** Cubs is open to both girls and boys aged between 8 and 10 ½ years old. The Pack has regular meetings on Friday nights in term times from 6.30pm to 8pm. There is a waiting list for Cubs, email join@sherstonscouts.org.uk for an application form

**Sherston Drama Group** The Drama group puts on plays and pantomimes in the Village Hall. If you are interested in taking part or helping out contact Sue Lehrer (Chairperson) lehrer.sue@icloud.com or 07780 661830

**Drawing Classes in Sherston** Classes are held in the British Schoolroom during term times Weds either 10am to 12noon or 1.30 to 3.30pm. Students have individual attention and the classes are friendly and welcoming. We work on observational drawing in a range of media, pencil, watercolour crayon and pastel; subjects include plants and flowers,

natural objects and still life groups. For further information please contact Heather Martin heather@geoffmartin.plus.com or phone 840375

**Sherston Whitewall Explorers** Explorers is open to both girls and boys aged between 14 and 18 years old, you don't need to have previously been a member of Scouts or Guides to join us. We meet at the Scout hut on Friday nights between 8.30pm and 10pm during school term times, if you are interested please email join@sherstonscouts.org.uk to obtain an application form

**Sherston Town FC** The club plays in the Stroud league at Knockdown Park on Sat afternoons - spectators and new players welcome. For more details contact Pete Brock on 07912 777647 or peter.brock666@btinternet.com

**Footpaths Group** 'Sherston Walks - a guide to local Rights of Way', featuring 10 local walks is on sale at the Post Office. If you would like to learn more about the Footpaths Group contact Tanya Burgess on 841498 or smythtanya@hotmail.com or visit www.sherstonwalks.org.uk

**Forest School** Independent sessions led by local outdoor learning specialist Niki Walden, that include an after school club at Sherston Primary School, weekly curricular sessions at Luckington School & Luckington Pre-School and occasional further fun extended sessions during school holidays. For further information please contact nikiwalden-forestschool@hotmail.co.uk

**Fresh Air Fitness** Total body outdoor workout for all levels (beginners to advanced) on Sherston Rec Mon & Fri 9 -10am. Info: www.pulse4life.co.uk Stuart 07986 003602 or stuart@pulse4life.co.uk

**1st Sherston Guides** Meet every Wed during term time 5.30-7.15pm at Sherston Village Hall. Girls are welcome to join after their 10th birthday, but there is a waiting list. Visit www.girlguiding.org.uk and follow the parents link to register your interest, for all other queries contact Fi Picton via fi.picton@outlook.com

**Hatha yoga class** Small breath driven relaxing Hatha yoga class Tuesday 6.45 - 8am and Wednesday 6 - 7.15pm. Support for anxiety, depression and quitting smoking offered. Please contact Russ on 07710 170081 or russellhtownsend@gmail.com

**The Hygiene Bank** Drop-off location in The Co-Op in Sherston and The George Vets, Malmesbury. The Hygiene Bank collects donations of new and unused hygiene products, which are then donated to local charities who are in desperate need of these items, for example, women's refuges and young person's hostels www.thehygienebank.com.

**Exercise for over 60s with Synchronicity** Fun, social exercise class (no exercises performed lying down) on Mondays at 10.30am in The British School Rooms. Suitable both men & women. All abilities. Everyone welcome. 1st class free. Book your place with Emma: 07843 256081 emmacope@synchronicity.me.uk

**Sherston Netball Club** Training every Mon at 7.30pm at Westonbirt Leisure Centre. All ages and abilities welcome. £3 per session. For more info, please contact Lauren (07885 597429), Saara (07739 552336) or Kate (07792 064438).

**Parish Council Meeting** Takes place on the 2nd Thurs each month at 7.30pm in the village hall. Minutes of meetings can be read online at www.sherston.org.uk. Further details contact the Clerk at clerk@sherston.org.uk

**Sherston Pilates** Daytime and evening classes held in the village hall. Run by Saara Sharman, Chartered Physiotherapist. All ages and abilities welcome. For more details contact Saara on 07739 552336 or sherstonpilates@gmail.com

**Rattlebone Boules League** 48 teams playing in 3 Leagues Playing season Apr – Aug. For more information, contact Huw Bowles 07711 473243.

**1st Sherston Scout Troop** Scouts is open to both girls and boys aged between 10½ to 14 years old. We meet at the Scout hut on Tuesday nights from 7pm to 9pm during school term times. There is a waiting list for Scouts, email join@sherstonscouts.org.uk for an application form

**Senior Club** Meets at 2.30pm during summertime 2pm during winter in the British School Room, more details call Helen Quirk 840516.

**Sherston Sewing School** Beginners' Sessions in the British School Room on the 2nd Sat of each month, 10am-4pm with a break for lunch at £65 per day Phone Goug Wilcox on 07788 558035 to book or for further information on the more advanced projects that are planned..

THIS AND ALL PREVIOUS ISSUES ARE AVAILABLE TO VIEW AND DOWNLOAD AT WWW.SHERSTON.ORG.UK



**Sherston Short Mat Bowls** Meet every Thursday at 2.30 to 4.30pm & 7.30 – 9.30pm. in the Village Hall. New members welcome – bring flat shoes, we have the woods. For more information contact Tony Weedon 841377 or Anne Andrews 840941

**Sherston Tennis Club** The tennis courts are located on Knockdown Road, next to the football pitch. If you're interested in joining the club or using the courts, please contact Nic Riley on 840682 or nic50riley@gmail.com

**Sherston Theatre Club** Excursions with a Sherston High Street-to-venue return coach service. Annual fee £20. See website for details [www.sherstontheatreclub.co.uk](http://www.sherstontheatreclub.co.uk) or contact Helen Quirk on 840516 or [helenandjim@thequirks.plus.com](mailto:helenandjim@thequirks.plus.com)

**Sherston Velo** A cycling club formed of enthusiastic road cyclists from Sherston and the surrounding area. There are regular rides each weekend morning with a fast paced group leaving first for an hour, followed by a longer club run. For membership and other information about the club, visit the website [www.sherstonvelo.cc](http://www.sherstonvelo.cc) or email Mark Walsh at [secretary@sherstonvelo.cc](mailto:secretary@sherstonvelo.cc)

**Sherston Village Hall** Available for hire by all. Ideal for meetings, events, parties etc. For details contact Margot Holland 841019 [mplholland@btinternet.com](mailto:mplholland@btinternet.com)

**Village Hall 300+ Club** For an annual subscription of only £6, give yourself the opportunity of winning a cash prize in every monthly draw whilst supporting the Village Hall.

**Sherston W.I. (Founded 1940)** Meetings on first Thurs of the month May– Sep in the Village Hall at 7.30pm and Nov – Apr in the British Schoolroom at 2.30pm. Jan & Oct no meetings but lunch/dinner. Visitors always most welcome £4. Further information: Secretary 07388 606785

**Yoga for All** Mon evenings 7.45-9.15pm in the village hall. Drop in rate £8.50 reducing to £7 if you take up the course. More details contact 07779 600786 after 6pm or leave a message.

## Outside Sherston

**Avonvale Utd FC** The youth section trains at The Recreation Ground, Shipton Moyne every Saturday morning (from 1 Sep – 31 May) from 9.30am, with FA qualified coaches. We welcome boys and girls age 6+ of all abilities and confidences to enjoy the beautiful game, whilst developing at their own pace in a friendly and calm environment. For more details email [avonvaleutdfc@outlook.com](mailto:avonvaleutdfc@outlook.com) or call Jo Hargreaves on 07518 017363

**Boules at the Bull** Friendly boules club at the Red Bull Inn (Malmesbury Rd) - meets every Thurs at 7.15pm – any level. For the more competitive members, there is a team playing in the Cotswold Pétanque league. To enter, please contact Sue McKechnie on 840601 or [susannemckechnie@hotmail.co.uk](mailto:susannemckechnie@hotmail.co.uk)

**Carer Support Wiltshire - Monthly carers café** 4th Thursday each month 10.30am – 12pm at the Kings Arms Hotel, Malmesbury - come along to chat with other carers over a hot drink or two. CSW is a charity with a team of support workers who can provide information and support to carers living in Wiltshire, by phone or face to face, along with counselling and advice relating to your role. Free and confidential for anyone aged 18+. CSW offers the chance to have a break through social cafés, days out, activities, craft groups and complementary therapies. More details or to register for some support, visit [www.carersinwiltshire.co.uk](http://www.carersinwiltshire.co.uk), email [info@carersinwiltshire.co.uk](mailto:info@carersinwiltshire.co.uk) or freephone 0800 181 4118 (01380 871690 from a mobile).

**Castle Combe Colts Football Club** Join a charter standard club with CRB checked FA qualified coaches, fantastic playing & training facilities and a healthy inclusive culture – take a free 4week taster session. Currently recruiting for the following age groups: Mini-Kickers (Rec/Y1) U10 (Y5) U11 (Y6). Tel 837286 or [secretary@cccfc.co.uk](mailto:secretary@cccfc.co.uk) [www.cccfc.co.uk](http://www.cccfc.co.uk)

**Easton Grey Parish Church** See Parish Life for details of services

**Gauzebrook Church for Children** Children are welcome at all the services which are held in the Gauzebrook Group churches but there are some occasions which are particularly for them: Junior Church is held at Court House, Hullavington at 11.00am now on the first Sunday of each month, except for August. This is for children from 3 to 11+. Any children under 3 need to be accompanied by an adult. Contact Becky Fisher 07974 030212 or [becky.fisher@deanery.org.uk](mailto:becky.fisher@deanery.org.uk)

**Hogwards** The Help a Hedgehog Hospital charity has a satellite hospital in Tetbury. Mary Hinton 07779 299224 [www.helpahedgehog.org](http://www.helpahedgehog.org)

**Ingleburn Trefoil Guild** Meets on the 3rd Monday of the month, usually at St. Mary's School Tetbury at 7.30 p.m. Lifts are available for non-drivers in the Sherston/Malmesbury area. Details from Helen Price, 503187 or [retreatcottage17@btinternet.com](mailto:retreatcottage17@btinternet.com)

**Junction 17 Recorder Group** A mixed ability adult group with recorders of all sizes meet on Tuesdays 7.30-9pm during term-time in Hullavington Church. Occasional concerts throughout the year. New members welcome. Email Janette [jctn17recorders@outlook.com](mailto:jctn17recorders@outlook.com) or call Heather on 07770 415171

**Link** - (Malmesbury and District)

Link is a charity run by volunteers to provide transport for people living in the Malmesbury area to hospitals and other health related appointments. Volunteers always needed. More information from the Helpline: 840861 or [coordinators@malmesburylink.co.uk](mailto:coordinators@malmesburylink.co.uk)

**Luckington Pre-School** A well-established Montessori inspired Pre-School, for 2½ to 5 years old. Mon-Fri 9am-1pm, during term time. Government funding available and childcare vouchers welcome. Ofsted rated Outstanding For more information, call 840028, email [chair@luckingtonpreschool.org.uk](mailto:chair@luckingtonpreschool.org.uk) or visit [www.luckingtonpreschool.org.uk](http://www.luckingtonpreschool.org.uk)

**Malmesbury Area Board Meeting**

For details see [www.wiltshire.gov.uk/areaboards](http://www.wiltshire.gov.uk/areaboards)

**Malmesbury Concert Band** Rehearsals on Fri evenings in Malmesbury, 7.15 – 9.15pm for performances at local bandstands. For further details see our website [www.malmesburyconcertband.org.uk](http://www.malmesburyconcertband.org.uk) or contact Tony Fleming, the Musical Director, on 575229 or [musdir@malmesburyconcertband.org.uk](mailto:musdir@malmesburyconcertband.org.uk)

**Malmesbury Community Choir** A non-audition performing choir that meets for rehearsals in the Old School Room at the Town Hall every Monday evening from 7.30-9.30pm. The waiting list is currently full for ladies, but we would always welcome extra men and young people between 14-21 years old. Membership is £50 per quarter, but membership for U18s is free and U21s is half price. For further information please email [info@malmesburycommunitychoir.org](mailto:info@malmesburycommunitychoir.org), visit the website at [www.malmesburycommunitychoir.org](http://www.malmesburycommunitychoir.org) or [www.facebook.com/MalmesburyCommunityChoir](http://www.facebook.com/MalmesburyCommunityChoir)

**Malmesbury Embroiderers' Guild** The local branch holds monthly meetings at Little Somerford Village Hall. On alternate months there are Saturday workshops on a wide range of topics, and on the intervening dates there is a Tuesday evening talk at 7.30pm. We always welcome newcomers and occasional visitors, although pre-booking is essential for the workshops. Just turn up for the talks – non-members £5. For further information please phone Heather Martin 840375 or [www.malmesburyembroiderers.blogspot.com](http://www.malmesburyembroiderers.blogspot.com)

**Malmesbury Film Society**

Memorable new, classic and foreign films are shown at 7.30pm every 3rd Sunday of the month at St. Mary's Hall, Malmesbury - no booking or membership necessary. Join us for unique films and an enjoyable evening out. See our website [www.malmesburyfilmsociety.org.uk](http://www.malmesburyfilmsociety.org.uk) for details on all upcoming films.

**Malmesbury Luncheon Club** Over 60s meet every Wednesday at midday in the Wesleyan Room of Malmesbury Town Hall for a chat and a 2 course lunch followed by tea or coffee, apart from during school holidays. £3.50 Please call Helen Churchill on 840080 if you'd like to attend. New members most welcome. Volunteers also needed to prepare and serve lunch, no washing up.

**Malmesbury Rainbows, Brownies, Guides and Rangers**

For details contact the Division Commissioner at [malmesbury@wncounty.org.uk](mailto:malmesbury@wncounty.org.uk) or visit [www.girlguidingwiltshirenorth.org.uk](http://www.girlguidingwiltshirenorth.org.uk)

**North Wiltshire Villages Flower Club** meets at 7.30pm on the 3rd Wed evening at Crudwell Village Hall. Members come from the surrounding villages to hear speakers and enjoy floristry demonstrations and do workshops and competitions. Further details call Margaret Stanford on 01285 770639

**Rotary Club of The South Cotswolds** Meets at The Horse Guards Inn in Brokenborough each Mon at 7pm, with dinner served at 7.30pm. Visitors are always welcome to our speaker meetings, as are guests and anyone interested in Rotary and in helping the local Community. Further details at website [www.rcsc.co.uk](http://www.rcsc.co.uk) or from Ian Pegg on 840986.

**Tetbury Camera Club** Meets every Tues evening from Sept to end of May at 7.30pm in The Priory Inn, Tetbury. For more information and current programme visit <http://tetburycameraclub.org.uk/> or call Liz Cooper 840482. Visitors welcome.

**Wiltshire Walks** The walk lasts approximately 30-60 minutes - 3 levels available - and often ends with a cup of tea or coffee. Further information contact Rosie on [rosie.golding@wiltshire.gov.uk](mailto:rosie.golding@wiltshire.gov.uk) or 07917 599964. For a full list of walking groups in Wiltshire please visit [www.walkingforhealth.org.uk/walkfinder/get-wiltshire-walking](http://www.walkingforhealth.org.uk/walkfinder/get-wiltshire-walking)

*If you run a club, society or organisation in Sherston that holds regular events such as the above and wishes to be listed, please supply your details and we will add them to the Regular events list. If you have a particular event then please write a short piece about it and we can include it as an article and put the details in the What's On list for that month.*

# WHAT'S ON

Check in the main section of the Cliffhanger, their website / facebook / contact details for dates and times and check to see if events are still happening during COVID19 restrictions.

## Sherston

### Sherston Advent House Trail 2020 with the Sherston Arts Festival

Well over 100 houses taking part! Take a look at the map to see which houses and businesses are decorating and lighting up their windows or gardens every night from 1st right up until the 24th December, 5.30pm-8.30pm. Don't forget to observe social distancing and the relevant government guidelines when you are out and about looking at Advent Houses

### The Carpenter's Arms

Coffee, pastries and cakes open from 8.30am whilst Angel closed - cyclists, dogs and children welcome Quiz night - check boards for details  
*For further details call 840665 or visit [www.facebook.com/carpenters.armssherston](http://www.facebook.com/carpenters.armssherston)*

### The Rattlebone Inn

Takeaways available including Sunday lunches, weekend Wood fired Pizza Oven, outdoor dining, socially distanced indoor dining. Check boards for more details of events  
*For further details call 840871 or follow on Twitter or visit [www.therattlebone.co.uk](http://www.therattlebone.co.uk)*

### The Courtyard Café @ Lucy Tom's

Now serving coffees, tea and herbal infusions and homemade cakes in the newly remodelled Tucks Yard with covered seating – takeaways available.  
*For further details call Lucy on 841433 or visit <https://lucytom.com>*

### Café at Hortico

Newly remodeled café in the garden centre for tea coffee and cakes 10am - 3.30pm daily - wood burner, fully sustainable off grid, log cabin style café, covered seating in the nursery and amongst the Christmas trees growing for next year - dog friendly  
*Further details on Facebook or visit [www.horti.co.uk](http://www.horti.co.uk)*

## Wiltshire Council Mobile Library

In Sherston Every fortnight on Saturdays  
10.30am – 12.45pm Sherston High Street  
*For further details call [clerk@sherston.org.uk](mailto:clerk@sherston.org.uk) or [mobilelibraries@wiltshire.gov.uk](mailto:mobilelibraries@wiltshire.gov.uk) or visit <https://services.wiltshire.gov.uk/MobileLibrary/Library/Stop/65>*

## Church of the Holy Cross - Church events

Details of this month's events in the main section of the cliffhanger and on the Church Noticeboard for details of services and events.  
See main section for details of the Christmas bazaar in the village hall 5 Dec 12noon-3pm  
*For further details call Rev Susan Harvey 840696 or Susan Harvey <[susan.harvey055@gmail.com](mailto:susan.harvey055@gmail.com)>*

## Luckington

### The Old Royal Ship

Take away specials 12 noon – 7pm Daily  
Please order as early as possible 840222

## Knockdown

### The Holford Arms

Check boards for more details of events or call 01454 238669 or [info@theholfordarms.co.uk](mailto:info@theholfordarms.co.uk)

## Westonbirt

### The Arboretum

Admission by booked entry slot only. Tickets on sale for the Enchanted Christmas trail.  
Summer 2021 concerts tickets on sale: Thurs 10 Jun: Rag'n'Bone Man; Fri 11 Jun: Keane; Sat 12 Jun: Madness; Sun 13 Jun: Jess Glynne  
*For further details call 880220 or visit [www.forestryengland.uk/westonbirt](http://www.forestryengland.uk/westonbirt)*

## Malmesbury

**Malmesbury Artisan and Farmers' Market**  
held at the historic Market Cross every Fri from 9am to 3pm with an enticing array of local, fresh and organic produce together with artisan products and gifts at great prices

### Movies@Malmesbury

See article in main section for this month's details Movies@Malmesbury is run entirely by volunteers in Malmesbury Town Hall  
*For further details call For all of the latest information, schedules, synopses, trailers etc. check out our Facebook page at: [MoviesatMalmesbury](https://www.facebook.com/MoviesatMalmesbury) or visit [www.malmesbury.gov.uk/cinema.html](http://www.malmesbury.gov.uk/cinema.html)*

### The Big Malmesbury Craft Fair

Last Sat every month 11am-3pm - meet unique creatives, creators, makers, designers, producers and bakers. The Hub



## Malmesbury and District U3A

U3A is a unique organisation which provides educational, creative and leisure opportunities for retired and semi-retired people. There are over 500 members and around 40 different interest groups including arts and crafts, book group, history, gardening, dancing, theatre trips, languages, walking etc. Malmesbury & District U3A continues to keep in touch with members with regular editions of the Lockdown News and Zoom events.

For further details visit [www.malmesburyu3a.org.uk](http://www.malmesburyu3a.org.uk)

## WOMAD AT HOME

Welcome to a brand new listening experience. Featuring eight artists from a cross-section of musical genres, 'WOMAD at Home' offers a unique, 360° immersive audio experience designed specifically for headphones. 8 weeks of live music till November <https://athome.womad.co.uk>

## Tetbury

### Tetbury Goods Shed – café open

The Whistle Stop café remains open for takeaway coffees and takeaway food on Wednesdays 12-4pm and Thursday to Sunday 10am-4pm. We are thoroughly Covid secure and have been certified as such by Visit England : [www.shed-arts.co.uk](http://www.shed-arts.co.uk)  
**Vegetables from Aunt Addie's** Visit the amazing Ros for all your delicious locally grown vegetables. Adeline Farm is a farming venture with the emphasis on quality, fresh, local and seasonal produce. Although not certified as Organic they are committed to using organic methods ~ and to working with nature and respecting wildlife. They are also totally committed to producing the finest produce possible. Every Sat 11am-2pm Adeline Farm Community Project offers facilities to the disabled, people with learning difficulties, and other groups in the Wilts. /Glos. area.

## Didmarton

### Flicks in the Sticks

Will return – tbc Didmarton Village Hall  
 For further details call Jenny Body 01454 238358 or [jenny.body@btconnect.com](mailto:jenny.body@btconnect.com)

## Grittleton

### Moviola - the Touring Rural Cinema Scheme

Will return – tbc to Grittleton Village Hall  
 For further details call Lesley 01249 783157 or email [l\\_palmer@btinternet.com](mailto:l_palmer@btinternet.com) or visit [www.moviola.org/](http://www.moviola.org/)

## Wotton-Under-Edge

### The Electric Picture House

A refurbished local cinema run by volunteers from the local community See website for this month's films. Allocated seating, prebooking essential. Face coverings must be worn, though can be removed to consume drinks and snacks bought at the EPH. For further details call 01453 844601 or visit [www.wottoncinema.com](http://www.wottoncinema.com)

## Cirencester

### The Barn Theatre

For further details call Box office: 01285 648255 or [boxoffice@barntheatre.org.uk](mailto:boxoffice@barntheatre.org.uk) or visit <https://barntheatre.org.uk>

## Bath, Stroud, Bristol, Wotton-Under-Edge

### Covent Garden Royal Opera House and Ballet @ the cinema

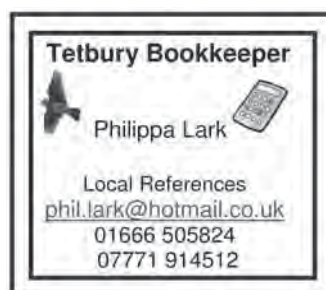
Live and pre recorded screenings of opera and ballet from the ROH Covent Garden  
 Stream opera and ballet content online from our house to yours while our stages are closed. Stroud Apollo, Odeon Bath and many other Cinemas For further details call 0871 220 6000 or visit [www.roh.org.uk/cinema](http://www.roh.org.uk/cinema)

**National Theatre Live** Live and pre recorded screenings from The National Theatre @ the cinema  
 For further details visit [www.ntlive.com](http://www.ntlive.com)

## Bath

### Theatre Royal Bath

Live performances will return this Autumn with performances in the socially distanced Main House auditorium.  
 For further details call 01225 448844 or visit [www.theatreroyal.org.uk](http://www.theatreroyal.org.uk)



**Tetbury Bookkeeper**

Philippa Lark

Local References  
[phil.lark@hotmail.co.uk](mailto:phil.lark@hotmail.co.uk)  
 01666 505824  
 07771 914512



**Casa Maintenance**

"Let us help you make your House into a Home"

HOME IMPROVEMENTS

[www.casamaintenance.co.uk](http://www.casamaintenance.co.uk)

[hello@casamaintenance.co.uk](mailto:hello@casamaintenance.co.uk)

01666 840809 | 07493 294901

## EMERGENCY RESPONSE

If you are in immediate danger call 999

The public version of Sherston's Emergency Response Plan can be found on the Sherston website:

[www.sherston.org/downloads/sherston-parish-council-emergency-plan/Sherston-Emergency-Plan-REDACTED-20-11-2015.pdf](http://www.sherston.org/downloads/sherston-parish-council-emergency-plan/Sherston-Emergency-Plan-REDACTED-20-11-2015.pdf)

**Sherston Emergency Response Coordinator**  
emergency@sherston.org.uk (only during an incident)

### Wiltshire Council

Highways, Social Care, Emergency Transport  
24hr telephone contact: 0300 456 0100  
EPRR@wiltshire.gov.uk (only during an incident)  
Floods: 0300 456 0105 or drainage@wiltshire.gov.uk

### Useful Information

Wiltshire Council Online Gritting routes  
[www.wiltshire.gov.uk/parkingtransportandstreets/roadshighwaysstreetcare/gritting.htm](http://www.wiltshire.gov.uk/parkingtransportandstreets/roadshighwaysstreetcare/gritting.htm)

### Utilities

**ELECTRICITY** – SSEPD Power track  
To report a problem or for information call 105  
[www.ssepd.co.uk/Powertrack](http://www.ssepd.co.uk/Powertrack) for a map of faults  
0800 072 7282 or 0345 072 1905 from a mobile phone  
@SSEPD for updates on twitter

### WATER – Bristol Water

[www.bristolwater.co.uk/contact/](http://www.bristolwater.co.uk/contact/)  
Emergency Helpline: 0345 702 3797 (24 Hour)

### WATER – Wessex water

[www.wessexwater.co.uk/Contact-us/](http://www.wessexwater.co.uk/Contact-us/)  
Emergency Helpline: 0345 600 4 600 (24 hours)

### BBC Wiltshire can be heard via:

West Wilts area  
(Chippenham, Devizes and Trowbridge): 104.3FM

**Grays of Sherston** 01666 840728

5 Church St, Sherston, Malmesbury SN16 0LR

\*\*\*

MOT's, servicing and advice  
Tyres, air conditioning and tow bars.  
Our friendly, professional village garage.

**01666 840728** Local quality car care

## Foxley Plumbing & Heating

Oil Boiler Installation, Servicing and Repairs  
Oil Tank Replacement  
Heating Installation and Repairs  
Bathroom Installations  
Unvented Cylinder Systems  
No Job Too Small

**Tim Hibbard**

Malmesbury (01666) 822863  
Mobile 07966 462202  
Email [foxleyph@btinternet.com](mailto:foxleyph@btinternet.com)



# Useful Numbers

BT fault line	0800 800151
CLARENCE (Highway complaints)	0800 232323
Cllr John Thomson	01666 840785
Malmesbury Activity Zone	01666 822533
Malmesbury Library	01666 823611
Malmesbury Police 101	(emergency 999)
Malmesbury Primary Care Centre	01666 825825
Malmesbury Secondary School	01666 829700
Malmesbury Youth Centre	0799 0908550
MP James Gray	0207 219 6237
Sherston Parish Council	07790 883503
Sherston School	01666 840237
Sherston Village Hall (bookings)	01666 841019
Sherston CoOp PO Stores	01666 840190
Tolsey Surgery	01666 840270
Wiltshire Council	0300 4560100

**SKETCHUP ARCHITECTURAL DESIGN**

## 3D CAD Models and 2D Drawings

- Design and Visualisation
- Planning Applications
- Building Regulation Drawings

For a free initial consultation contact:  
**[info@sketchuparchitecturaldesign.com](mailto:info@sketchuparchitecturaldesign.com)**  
**07814 685 519**  
[www.sketchuparchitecturaldesign.com](http://www.sketchuparchitecturaldesign.com)

Pinkney Park. Malmesbury. Wiltshire