



## Sherston Pop-Up Curry Takeaway



Banish the winter blues this January and snuggle up at home with a takeaway curry. No need to venture out to Malmesbury as, for one night only, Sherston will have its very own pop-up curry house. A team of chefs will be working hard to bring you fragrant, freshly made curries. There will be a range of set menus to suit meat lovers, vegetarians and vegans, as well as those who are gluten free. As all meals will be made to order, there may be a delay at busy periods so why not enjoy a drink from our licensed bar, which will stock a range of beers and cider as well as the obligatory prosecco. Menus will be published on the Sherston What's Occurring facebook page as well as on noticeboards around the village.

As with all good events in Sherston, this is a fundraising event and all profits from the evening will be going to Sherston Primary School.

So come along to the British School Room between 5.30pm and 8.30pm on Saturday 26 January.

It could be the ideal pre-concert supper (see page 2) ...

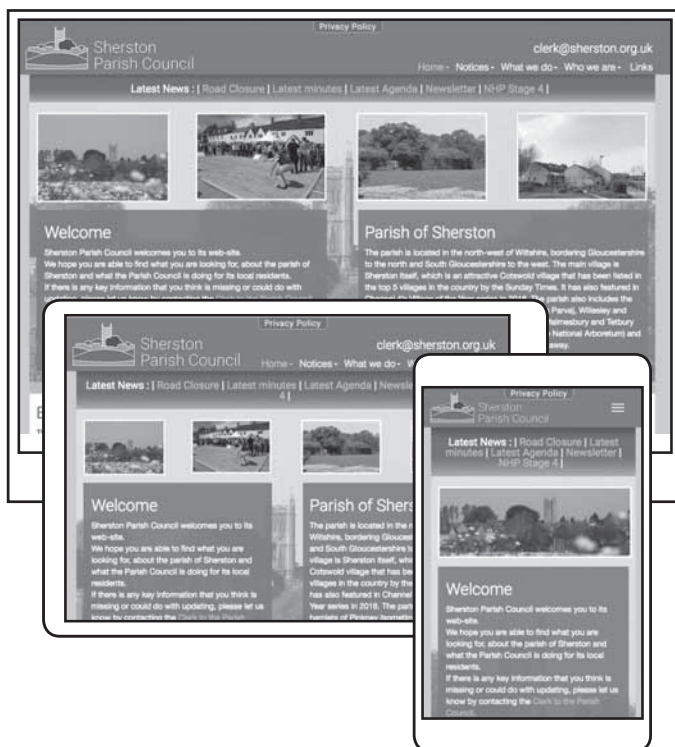
## Thank you again from Paul and Gail

Following our presentation at the Village Hall on 8 December, we would like to thank everyone once again for their generosity and kind words.

We were astounded and honoured to receive such a large donation which we confirm has already been put to excellent use in helping us to fit out our new house (and man shed!).

*Paul and Gail*

## Parish Council launches revamped website!



Have you ever wondered how to contact the Parish Council? Have you tried to find out what the agenda is for the next meeting or even when the next meeting is? Have you ever wanted to know what the current progress is of the Neighbourhood Plan? Well, the Parish Council have recently launched a revamped website, which is designed to be easier to use and allow members of the public to get the information they want. It's been updated, so that it is now a 'responsive website', meaning that it can be viewed properly on all forms of devices: PCs, tablets and smartphones.

The new site will also be easier to edit and keep updated, reducing the running costs of the site and so creating a saving for the Parish Council. A win-win situation no less!

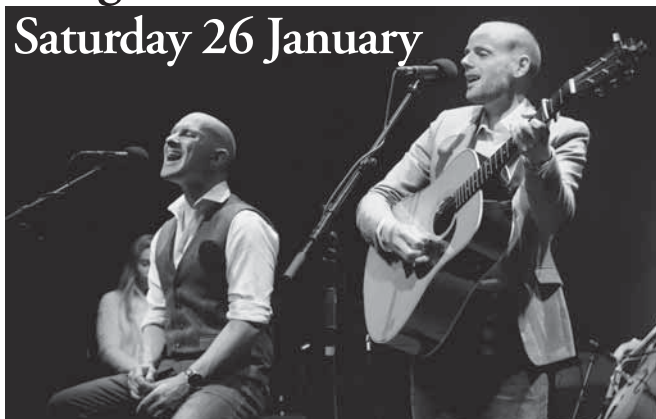
The new website can be viewed using the same link as the old one: [www.sherston.org.uk](http://www.sherston.org.uk)

Please have a browse and if there is any more information you think should be on the site, or any errors or corrections required, please send an email to Donna, the clerk to the Parish Council (the appropriate email address should be obvious on the new site).

*Cllr Martin Smith  
Sherston Parish Council*

## Simon & Garfunkel Through The Years comes to Sherston Village Hall:

**Saturday 26 January**



In 1953 two schoolboys from Queens, New York, became friends and, with a shared interest in music, began singing and writing songs together. They cut their first record 'Hey Schoolgirl' under the name Tom and Jerry which got them a record deal at just 15 years old. The song got to number 49 on the billboard

**Copy deadline: 10<sup>th</sup> of the previous month.**  
Send to [editorial@sherstoncliffhanger.co.uk](mailto:editorial@sherstoncliffhanger.co.uk)  
or hard copy to Sherston Post Office Stores.

**What's On: contact Caroline Moore on**  
841405 or [info@sherstoncliffhanger.co.uk](mailto:info@sherstoncliffhanger.co.uk)

The size and content of the Cliffhanger depends entirely on the amount of copy we receive from individuals and groups. So, if you feel you have something of interest, please don't hesitate to tell us. Around 400 words would be a maximum but the shorter the better and less editing would be needed.

**Top tip:** if you're telling us of an event coming up, write a short piece about it rather than just supply basic details or a poster. You will then get a short article published to help boost interest as well as a mention in our What's On section. Don't forget to tell us how your event went, with a photo if possible.

### To advertise, contact:

Tahiti van Rooyen  
[advertising@sherstoncliffhanger.co.uk](mailto:advertising@sherstoncliffhanger.co.uk)

Advertising rates:

for 12 months:

1/4 page £280; 1/8 page £150; and 1/16 page £70

for one month:

1/4 page £80; 1/8 page £50; and 1/16 page £30

Inserted leaflet drop £100 max size A5

Whilst every effort has been made to ensure the accuracy of advertisements contained in this publication, Cliffhanger cannot accept any liability for errors and omissions. Inclusion of an advert should not be taken as an endorsement by Sherston Parish Council.

Please remember the Cliffhanger is delivered free to every home and business in the parish – more than 1000 copies. This and all previous editions are also available online at [www.sherston.org.uk](http://www.sherston.org.uk)

PRINTED BY THE COMPLETE PRODUCT COMPANY, PINKNEY

singles chart in 1957. Tom and Jerry didn't last long, with subsequent singles failing to chart, but it sparked a taste for fame in the two boys which would lead them to become the most successful folk-rock group of the 1960s and lead Paul Simon to become one of the greatest songwriters of all time. They won 10 Grammy Awards and in 1990 were inducted to the Rock and Roll Hall of Fame.

Simon & Garfunkel Through The Years is a celebration of the music, friendship and incredible careers of those two boys from Queens. Featuring the vocals of Dan Haynes and Pete Richards, the concert is the most authentic sounding tribute to the music of Simon & Garfunkel touring the world today. They don't dress up or try to act like Simon & Garfunkel but instead pay tribute to their iconic sound by recreating the perfect harmonies, timing and diction that mesmerised a generation, something they do flawlessly.

Collectively known as Bookends, Dan and Pete have been fronting Simon & Garfunkel Through The Years since its creation in 2011. The show started life touring village halls around the UK, branching out into small theatres until it grew enough to make appearances in larger theatres and concert halls. The show has toured extensively in the UK, Europe and the United States and has performed consecutive sell-out runs at the Edinburgh Festival Fringe since 2014 with concerts being described as 'simply breathtaking'.

Dan and Pete still enjoy performing at village halls: 'This is how we started out' says Pete, 'you can't beat the relaxed, friendly and intimate atmosphere you get at village hall performances, we love chatting to audiences about our experiences as Simon & Garfunkel fans.'

This unique, world-class show features classic hits such as Bridge Over Troubled Water, Mrs Robinson, The Sound of Silence and Cecelia. Performing at Sherston Village Hall on Saturday 26 January. Tickets: £14, £12 (conc). Box Office: 840375. Bar.

[www.simonandgarfunkelthroughtheyears.com](http://www.simonandgarfunkelthroughtheyears.com)

[www.facebook.com/](http://www.facebook.com/simonandgarfunkelthroughtheyears)

[simonandgarfunkelthroughtheyears](http://simonandgarfunkelthroughtheyears)

## Sherston Senior Club

In November, we had a very interesting speaker - Arthur Kingdon - who showed us amazing pictures of underwater life and how he was able to take the pictures of it.

At our next meeting, we were entertained by Sherston School choir, this is always an enchanting afternoon and they were very good. Many thanks to Mrs Berry.

In December, our last meeting of the year was our Christmas lunch at the Old Royal Ship, which was very pleasant, with 31 attending and enjoying themselves.

We next meet on Tuesday 15 January at 2.00pm in the British School Room, Cliff Road, for our AGM with a quiz and bingo afterwards. New members are welcome. Our membership fee is £15.00. For more details contact Helen Quirk on 840516.

## Sherston Community Choir

We had a couple of busy months at the end of 2018. After singing at the Remembrance ceremony on Armistice Day we were into preparations for our Christmas concert on 1 December.

This was the third year that we joined with the Sherston Primary School choir to put on a joint concert in the church. Both choirs enjoy singing together and we also raise money for charity. The school will be using their share of the proceeds to help fund an activity during music week. While our chosen charity was Teach Us Too, the charity set up by Jonathan Bryan, to campaign for all children, regardless of how they are labelled, to be taught to read and write.

Saturday 8 December saw us singing at Westonbirt at the Enchanted Christmas evening, the first time we have performed there. We sang two sets in the large tepee to entertain people waiting to go on the walk, or warming up afterwards. We managed to get some of the audience to join in with Christmas carols and songs - and also managed not to be too distracted by the aroma of chips! Apart from adding to the festive spirit, we also collected another £113 for Teach Us Too.

When we start back this month, we will be getting to the heart of what we do as a community choir. With no 'gigs' in the immediate future, we will be singing simply for the fun of it. Learning new songs and enjoying singing some we already know. Everyone is welcome - you don't even have to be able to read music. We meet in the British School Room, Cliff Road, at 7.30pm on Wednesday evenings from 9 January, and would love to see you there.

*Sheila Cutcher*

## WI Report



At our W.I. meeting in December, before tucking into tea, cake and mince pies, we were entertained by Cherry Hubbard who, dressed in the costume of a housewife from the 1590s, told us about Christmas in Tudor times. After the Black Death had reduced the population of the country by 60%, the old order had to change. There were no longer enough workers to meet the demand and so they were able to ask for better pay and could work where conditions were better, and gradually a new class developed between the Lord of the manor and the peasants, the middle class. Each of these groups wanted a better life for their children so the peasant's daughter was sent to be a maid in the farmer's home, the farmer's daughter found a position in the home of the aristocrat and the sons and daughters of the aristocrat became minor aides in the Royal Court. The new middle class aspired to have larger homes and used pewter or silver tableware and cotton or damask tablecloths to show off their new wealth.

The summer and autumn months were a time of gathering food to last through the winter, and the food was preserved by drying, smoking, salting and pickling. Peas and beans were particularly important as these would keep indefinitely and could be ground to make flour if the wheat crop had been poor. Sugar and spices were very expensive so using these in your cooking was a great way to show your wealth. It was said that if a man could import a sack of nutmeg into the country his family would be made for life! Christmas is celebrated at about the same time of year as the pagan midwinter and some of the old customs were still observed and it was a good time to display your wealth. Apart from looking after the animals, there was little work to be done and so farm workers were allowed home for the 12 days of Christmas, and it was considered bad luck to decorate your home before Christmas Eve. Christmas Day was for going to church and not for merriment. Presents were not given until New Year's Day. The Christmas table would be groaning with food and all to impress your guests. In the homes of the aristocracy everyone enjoyed the 'feast' but only the really rich were invited into the 'banquet' room where they also dined on candied fruits and marzipan cakes, all made with expensive sugar. Work started again on Plow Monday, the day after Twelfth Night.

On 17 January, later than usual, we will be enjoying our New Year lunch at the Old Royal Ship, and on 7 February, we will be holding our AGM.

If you have any questions, please let me know.

Mo Mulrain (tel: 840864)

## Tolsey News



### Happy New Year!

We would like to wish all our patients a happy and healthy New Year!

#### Goodbye to Staff

We said goodbye at the end of 2018 to Judy Sharp, who had been our Practice Manager for eight years, and to Liliana, a member of the dispensary team.

#### Temporary closure of the dispensary in the afternoon

Thank you for your patience in recent weeks during the closure of the dispensary between 1.00pm and 3.00pm. This is due to unexpected staff shortages.

#### Flu vaccinations

We have a limited number of flu vaccines left. If you are over 65 or in an 'at risk' group and would like one, please call to make an appointment as soon as possible.

*Judy Sharp - Practice Manager*



## Christmas and New Year waste and recycling collection changes

There will be no waste or recycling collections on Christmas Day, Boxing Day or on New Year's Day.

However, there will be catch-up collections on Saturday 29 December, 5 January and 12 January.

Garden waste collections will be suspended from Monday 24 December for two weeks and restart on Tuesday 8 January. Collections will be one day later than normal during this week.

All collections, including garden waste, will return to normal from Monday 14 January 2019.

All household recycling centres will be closed from 1.00pm on 24 December and all day on 25 and 26 December and 1 January. The centres will be open as normal on all other days.

For information about your local recycling centre or how to recycle your Christmas tree, visit [www.wiltshire.gov.uk/rubbish-and-recycling](http://www.wiltshire.gov.uk/rubbish-and-recycling)

 Normal collection day	Revised household waste, black box, plastic and cardboard collection day	Revised garden waste collection day 
Mon 24 December	No change	No collections
<b>Tue 25 December</b>	Thur 27 December	No collections
<b>Wed 26 December</b>	Fri 28 December	No collections
Thur 27 December	Sat 29 December	No collections
Fri 28 December	Mon 31 December	No collections
Mon 31 December	Wed 2 January	No collections
<b>Tue 1 January</b>	Thur 3 January	No collections
Wed 2 January	Fri 4 January	No collections
Thur 3 January	Sat 5 January	No collections
Fri 4 January	Mon 7 January	No collections
Mon 7 January	Tue 8 January	Tue 8 January
Tue 8 January	Wed 9 January	Wed 9 January
Wed 9 January	Thur 10 January	Thur 10 January
Thur 10 January	Fri 11 January	Fri 11 January
Fri 11 January	Sat 12 January	Sat 12 January
<b>Mon 14 January</b>	<b>Back to normal</b>	<b>Back to normal</b>

## Anyone for



The world's first POP Up village took place right here in Sherston in 2013, and again in 2016 raising over £10,000 for charity and bringing a whole community together. The big question is will 2019 see the next POP? Only you can decide!

To make the next Sherston POP happen, from the 17-19 May, we need as many people as possible to open up their homes and gardens and run... ANYTHING you want for around three hours! We will then produce a map and website to advertise the weekend so that everyone can join in the fun. From the previous two POPs, there have been a fantastically eclectic range of experiences to enjoy, including POP it on Fancy Dress, POP up Pony, The House of Chocolate, a milkshake bar, a nightclub, a 'Take back the Streets' race track, crisp booty bar, fabulous living statues, Groovie Gramps' record mart, Wiltshire's only six-hole pitch and putt, a Latin Quarter, the smokehouse, a bread-baking session, a lemonade stand and football coaching to name just a few! If you have something you have always wanted to have a go at or a talent to share, now is the time to have a go. We don't have to reinvent the wheel here - so if you think one of the ideas mentioned above is a goer, just run it again. Or have you thought about a POP up... netball or cricket coaching, bike maintenance POP, making and selling something delicious, a juggling school or a music session. Remember we are not looking for ultra professional it's just for fun and it shouldn't cost you a penny - just three hours of your time.

All profits will go to Sherston Primary School and Sherston Village Hall. If you are interested in getting involved or would like some more information drop Kirsty an email ASAP: [Kirsty.strachan@icloud.com](mailto:Kirsty.strachan@icloud.com) - you don't need to have the idea nailed down yet we just need to see if we have enough people to make it happen! Gig it, Teach it, Cook it, Sport it, Make it, and Sell it - you can POP up whatever you want and try your hand at anything!

## Sherston's Legendary Quiz Night: Saturday 2 February at the Village Hall!

A quick reminder that it's almost time to grab your tickets for one of the hottest events of the Sherston calendar: the annual Quiz Night! Run by the Friends of Sherston School, the 2019 Quiz Night, as in previous years, will feature a raffle and auction as well as the quiz itself. Prizes are still coming in but include a £50 Hush voucher, a £50 Boden voucher, an oven clean, a one-hour sports massage, Coco Bay vouchers (£100 activewear, £100 beachwear) and a hair and make-up voucher. Raffle tickets will be on sale outside the shop on Saturday 26 January, and there will be the chance for anyone who can't be at the Quiz Night

to make sealed bids on the auction prizes, including our most unusual (and amazing!) auction lot: an opportunity for a GCSE student to receive a week's work experience at a leading talent agency in London, Independent Talent, representing actors, directors, writers, presenters and many others involved in the media business.

Tickets for the Quiz Night cost £25 for a team of four and will be on sale from the post office and via Sophie Cheetham ([sophcheetham@gmail.com](mailto:sophcheetham@gmail.com)) from Friday 11 January. There is only space for 25 teams so move fast if you don't want to miss out!

## Sherston Village Hall 300+ Club

### December Draw

1st	334	Guy Tullberg	£13
2nd	240	Nigel Lindrea	£12
3rd	176	Andy Tremellen	£11
4th	185	Owen Fitzpatrick	£10
5th	181	Roger Mackney	£9
6th	40	Kay Exell	£8
7th	30	Mark Picton	£7

### Christmas Bonuses (for 2018 non-winners)

171	Mary Hibbard	£5
295	Caroline Dickenson	£5
37	Don Bremner	£5
116	Victoria Meheust	£5
74	Caroline Moore	£5
105	Daniel Butler	£5
28	Annette Crouch	£5
70	Bill Tullberg	£5

Collectors: Anne Andrews, Mary Goulding, Pat Moody, Rachel Moody, Janet Platts, Lin Prior, Margaret Thacker and Jill Woodward.

### Subscription reminder

A reminder that if you would like to renew your membership, please complete the form that your collector has delivered/will be delivering, and return it, together with your payment, in the envelope provided, to Sherston Post Office (NOT the Co-op shop counter). Don't forget renewing your membership helps support your village hall. If you would like to join, new membership forms are available at the Post Office. If you have a query or are unsure as to whether you are a member already, please ring me on 840846.

Many thanks for your continued support.

*Lin Prior Coordinator*

For the Widest Range of Bedding,

Hanging Basket & Patio Plants in the Area

**FOXLEY ROAD NURSERIES**

Herbaceous Perennials & Alpines

Vegetable and Herb Plants

**Foxley Road, Malmesbury**

Tel: 822171 [www.foxleyroadnurseries.co.uk](http://www.foxleyroadnurseries.co.uk)



**The Baraka Catering Company Ltd.**  
[www.barakacatering.co.uk](http://www.barakacatering.co.uk)



Catering for ALL events large & small  
 Delicious Homemade Canapés  
 Supper Parties  
 Gourmet Barbeques  
 Weddings, Birthdays & Christenings

Please don't hesitate to call Camilla on 07734 251 075  
 Or email [camilla@barakacatering.co.uk](mailto:camilla@barakacatering.co.uk)  
 with any orders, questions etc.

## Monday music fun!



Since the beginning of November, a group of Reception and Year 1 children have been meeting after school each week at the British School Room to discover the joy of music. Sherston School has generously lent a wonderful selection of instruments for the sessions, including an array of drums, rainmakers, huge cymbals, triangles and bells, for the children to perform a range of songs, poems and Christmas carols. There were visits each week from 'Mystery Musicians' - many thanks to Edgar Nicolas on cello, Dave Shephard on saxophone, Amelie Meheust on flute and the four guitarists, Mary Clements, Izzy Evelyn, Raffi Lombardi and Alice Evelyn. Thanks also to the Sherston Congregational Church for the use of the British School Room, to Mrs Berry from Sherston School for the instruments and to Mary Clements for accompanying the group each week. The sessions have now finished but we hope to run a similar activity during Advent next year

*Alex Evelyn, Clare Seymour, Neil Carpenter Collins*

## Sherston Auto Services

**01666 840522**

Unit 1, Lordswood Farm, Sherston, Malmesbury SN16 0JZ

**Servicing & repairs**

**Tyre fitting  
& wheel balancing**

**Diagnostic  
& service indicator reset**

**all at competitive rates**

FREE COLLECTION & DELIVERY  
 IN THE SHERSTON AREA

Courtesy cars available

**All major credit cards accepted**



**M.O.T  
Test Centre**

Member of the Ford Blue Oval Club  
 Genuine Ford parts fitted





# School Days - news from Sherston Primary School

## Science workshop



Last month, thanks to funding from the Friends of Sherston School and donations from parents, children in Year 5 and Year 6 enjoyed a fantastic science workshop all about space. Paul Hill from Sirius Space Agency brought in space suits, meteors, moon rock and lots of other things for the children to explore. Here's what they had to say about it afterwards ...

*'Paul came to our school to teach us about science. He showed us loads of experiments; my favourite was when Paul showed us how to make a bottle explode with real fire. I also liked the experiment where there were three bottles, each with varying levels of fluid inside. A tablet was dropped into each bottle and the one with the least amount of fluid had the largest explosion. It blew the lid off the bottle and it hit the ceiling light!'*

Evie, Year 5

*'At our science workshop, we learned that astronauts have to measure the colour of their wee using a special chart to make sure they drink enough water. It's hard to tell if they've drunk enough otherwise, because of the lack of gravity. If they don't drink enough their bodies would start processing their blood and they would need*

*to return to earth and seek immediate medical attention. They have to wee in a special vacuum so their wee doesn't float around!'*

*'One fun thing that astronauts do to entertain themselves is to play ping pong but with a bubble of water instead of a ball.'*

*'They sleep in little padded rooms in special sleeping bags that have arm holes and are connected to the wall of the space shuttle so they don't float around.'*

*A long time ago, astronauts tried going into space wearing a tracksuit instead of a proper spacesuit. The astronauts' bodies inflated and went all puffy and then shrivelled up. They didn't survive. We did an experiment based on this, using a marshmallow and a syringe. We watched the marshmallow inflate and then shrivel up, just like the astronauts' bodies.'*

*'It was a really fun day.'*

Cerys and Euan, Year 5

## Christmas Jumper Day

All the children were invited to wear a Christmas jumper on Friday 14 December in exchange for a donation to Save the Children.

*'Mr Stewart's jumper was definitely the best!'*

Euan, Year 5

*'Christmas Jumper Day was funny because people's musical jumpers kept going off in the middle of lessons! I enjoyed seeing everyone else's jumpers, including the teachers.'*

Cerys, Year 5



**J. M. SERVICES**  
House Maintenance & Repairs

- Carpentry and Joinery
- Tiling
- Painting and Decorating
- Kitchen Installation
- Handyman Jobs

E: [jm.srvcs@gmail.com](mailto:jm.srvcs@gmail.com)  
M: 07500 410803  
M: 07493 294901  
Nello Magalhaes

We invite you to pop in for a

## CUPPA, CAKE AND CHAT

AT THE BRITISH SCHOOL ROOM  
Alternate Tuesdays, (when there is no Senior club.)  
2.30 - 4.0pm.

ALL WELCOME!

**Traditionally finished COTSWOLD STONE**  
of the very finest quality  
direct from our quarry

**KNOCKDOWN  
STONE**  
01666 840443

**Walling Stone •**  
**Building Stone •**  
**Roofing Tiles •**  
**Garden Stone •**

Tel: **01666 840443**  
Fax: **01666 840191**

**[www.knockdownstone.co.uk](http://www.knockdownstone.co.uk)**  
Knockdown Stone,  
Halfway Bush Farm, Knockdown,  
Tetbury, Gloucestershire GL8 8QY

# Christmas Fair

Last month, the Friends of Sherston School ran the Christmas Fair - with the help of children in Years, 4, 5 and 6 who were given the opportunity to run their own stalls. There were 12 children's stalls in total, with everything from face-painting and biscuit-decorating to a human fruit machine and an instant photobooth! The fair was a great success, raising over £1,300, which will be used to fund new equipment and experiences for everyone at school, including an iSingPop workshop.

*'We ran a Nerf gun shooting gallery and there were prizes if you scored over 100 points. We charged 10p for a shot, and 50p for six shots. The highest score was 975 (but that was with 12 shots)!'*

Euan, Year 5

*'My favourite part of the Christmas Fair was running my own stall and going round and seeing everyone else's*

*stalls. On our stall we made sock snowmen using socks that people had donated. We filled the sock with rice and put an elastic band round the top so the rice didn't fall out. We then put another elastic band round to make the head. We used pompoms for buttons and a cocktail stick coloured orange for the nose, we stuck on googly eyes and drew on a mouth. We used the toe of a sock to make the hat and another bit to make the scarf. We made more than £50!'*

Cerys, Year 5

*'Our stall, run by me, Chloe and Ella, was an arts and crafts stall. People could decorate a bag or make a decoration for their Christmas tree. Mrs Berry came to our stall and made a tree decoration. Our stall made £34! I hope that everyone who came enjoyed it as much as we did.'*

Henrietta, Year 4

*'Evie, Charley-Rose, Amélie and I ran an 'adopt a teddy' stall, which was Amélie's idea. We had 82 toys donated by pupils from the school. Children could choose their favourite and then adopt it. Each toy had its own Certificate of Adoption for their new owner.'*

Phoebe, Year 5

*'I liked the tattoos best.'* Ava, Year R

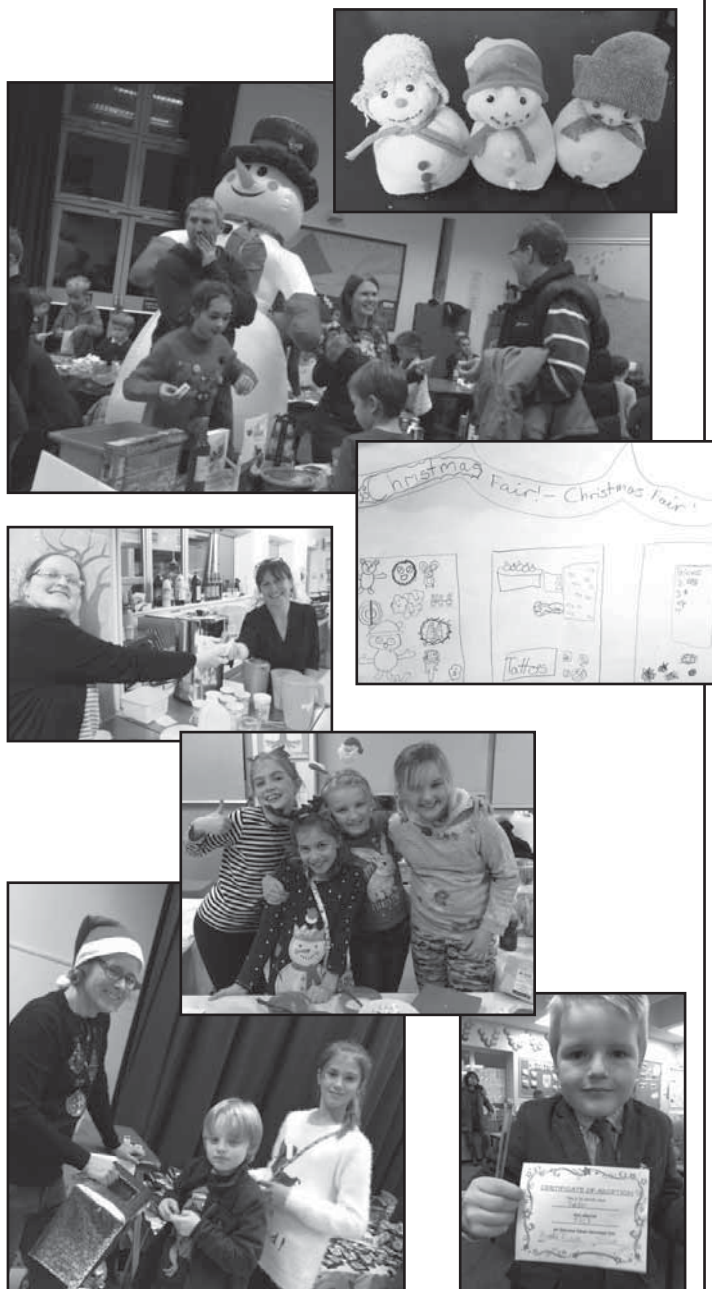
*'I liked going to the Secrets Room and choosing my brother a present and wrapping it.'*

Amelia, Year 1

*'I loved going to see Santa!'* Isabella, Year 2

*'My favourite stall was the nail varnish stall. I had my nails painted silver!'*

Kate, Year R



## Dog-free zone, please!

Just a friendly reminder that dogs are not allowed on the school site - even outside of school hours. We have recently found dog mess on the school site on several occasions, which obviously is not only unpleasant but also a potential health hazard for our children.

**We're family when family can't be there**



Driving  
Miss Daisy®

For further info  
please contact  
Helen on

**07458 012 460**

\*10% discount  
for first booking  
in February

- \* Your safe, friendly and reliable companion driving service.
- \* We care about making every journey a pleasure and easy.
- \* In Malmesbury and the surrounding villages for anyone unable to drive or feeling isolated but wishing to remain independent.
- \* Appointments, trips, visits and more.
- \* Up to 4 passengers.

[www.drivingmissdaisy.co.uk](http://www.drivingmissdaisy.co.uk)



# Parking Update

It's that time of year when we all take time to reflect on a number of things, not least of which is taking the time to say 'thank you'.

You will recall that, as a Parish Council, we recently featured an article in the Cliffhanger relating to parking concerns, which had been raised with us over a period of months. We wanted to take the time to say 'thank you' to those of you who have supported our request and taken the time to consider the safety of our neighbours, thinking about how and where you are parking in the village.

We think we can definitely say we are not there yet; in some respects things have probably become a little more challenging, with the various build projects going on in the village further impacting our ability to park. With some of these seemingly coming to an end, however, we should start to see more parking spaces becoming available due to the removal of skips along with a reduction in the number of builders and their respective vehicles.

Parking is likely to be a continual challenge in Sherston given the number of properties that do not benefit from dedicated parking provision, as well as the increasing number of homes with multiple vehicles. All we can really ask is that we continue to work together, be respectful of each other and really think about any disruption or risk to our neighbours that we may cause as a result of perhaps not being as considerate as we could be when we park our cars. As a Parish Council, we would like to wish you all a very merry Christmas and a happy New Year.

## Moviola @ Grittleton Village Hall

You may be surprised to know that Moviola @ Grittleton Village Hall is now in its ninth year. The support from villages near and far has been wonderful and Grittleton Village Hall Committee would like to say a very big THANK YOU to you for continuing to come to our screenings. Long may that continue.

Wednesday 30 January

**Mamma Mia! Here We Go Again [PG]**

Ten years after Mamma Mia! Sophie [Amanda Seyfried] is back in Greece. Now pregnant, she is struggling to find the strength to move into the most important chapter of her life. She retraces her mother Donna's [Meryl Streep] steps from the past as the film flashbacks to a young Donna [Lily James] in 1979 who is having the time of her life singing in a band and dating three very different men. Back in the present Sophie is wondering if she will discover who her real father is when an uninvited guest arrives, Grandma Ruby [Cher]. Also featuring Pierce Brosnan, Colin Firth and Julie Walters.

Tickets £6 adults, £4 children [12 and under] from Lesley on 01249 783157 or email [l\\_palmer@btinternet.com](mailto:l_palmer@btinternet.com) [underscore between l and p]

Doors open 7.00pm, programme starts at 7.30pm  
[www.moviola.org](http://www.moviola.org) [www.grittleton.info/](http://www.grittleton.info/)

Dates for your diary: Wed 27 Feb: King of Thieves;  
Wed 27 Mar: A Star is Born; Wed 17 Apr: Widows

**Grays of Sherston** 01666 840728

5 Church St, Sherston, Malmesbury SN16 0LR

♦♦♦



MOT's, servicing and advice  
Tyres, air conditioning and tow bars.  
Our friendly, professional village garage.

**01666 840728** Local quality car care

*SAGE GARDEN DESIGN*



FOR ALL YOUR LANDSCAPING NEEDS  
MOBILE NUMBER: 07973736912  
EMAIL: [chris.sagegardendesign@gmail.com](mailto:chris.sagegardendesign@gmail.com)  
[sagegardendesign.co.uk](http://sagegardendesign.co.uk)



**JAMES PYLE & CO.**

WILTSHIRE & SWILTON COUNTY

Sales and Lettings

---

**Local Knowledge**

**National Coverage**

---

Call us in complete confidence for  
a **free valuation** and advice  
on all property matters

**01666 840 886**

[jamespyle.co.uk](http://jamespyle.co.uk)

[interested@jamespyle.co.uk](mailto:interested@jamespyle.co.uk)

The Old School, High Street, Sherston






*You'll feel at home with*

**James Pyle & Co**



## 'Sherston Brick Club'

### British Schoolroom

Brick Club is open to everyone who is a fan of LEGO, so all children of all ages, with only one rule - use your imagination to the maximum! We meet on alternate Fridays (11th January and 25th January) from 5.30 to 7.00pm. Free entry.

#### Other events

1st January, 2.30pm - 4.00pm - New Years Day afternoon tea  
8th January, 2.30pm - 4.00pm - Cuppa, Cake and Chat  
22nd January- 2.30pm - 4.00pm - Cuppa, Cake and Chat

## MAN FOR ALL SEASONS

*WILL UNDERTAKE  
ALL HOUSE/GARDEN  
MAINTENANCE  
NO JOB TOO SMALL*

*From*

CUTTING HEDGES,  
WEEDING THE GARDEN  
& CUTTING DOWN TREES

*To*

PAINTING & SMALL JOBS  
IN THE HOUSE

*ALL MACHINERY PROVIDED  
- LOG SPLITTER AVAILABLE*

01666 825463

## Firewood

*Dry seasoned,  
hardwood logs*

*Barn stored*

*any size available*

*Also kindling sold in nets*

*Delivered to your door*

*For more details call Steve on*

*01454 232941 or*

*07974194012*



## TALLY HO TRAILERS Horse Trailers

New and Used  
Sales - Service - Repairs  
Van Fautras - Cheval Liberté  
- Ifor Williams

[www.tallyhotrailer.co.uk](http://www.tallyhotrailer.co.uk)

tel: 01666 841149

or 01452 814152



Creative Hairdressing has fully qualified and experienced stylists in all hair lengths and styles, both modern and traditional.

Come and join us for that creative experience so we can create that individual look for you.

For more information or to book an appointment contact

Creative Hairdressing,  
3 Market Place,  
Tetbury,  
01666 502949

[www.creativehairdressing.co.uk](http://www.creativehairdressing.co.uk)



T 01666 825198 | E [sales@ryallsbs.com](mailto:sales@ryallsbs.com)  
[ryallsdecoratingandbuildingsupplies.co.uk](http://ryallsdecoratingandbuildingsupplies.co.uk)

Connect with us: [ryallsbs](https://www.facebook.com/ryallsbs) [ryallsbs](https://www.instagram.com/ryallsbs) [ryallsbs](https://www.linkedin.com/company/ryallsbs) [ryallsmalmsbury](https://www.youtube.com/channel/UCyallsmalmsbury) | Subscribe to our mailing list for the latest weekly offers

## YOUR LOCAL DECORATING MERCHANT. BIG CHOICE, GREAT PRICES!

VISIT OUR  
DESIGNER PAINT  
SHOWROOM IN  
TETBURY

ASK US  
ABOUT OUR  
PRICE  
MATCH

WITH OVER 20,000 COLOURS ON-SITE  
WE CAN MIX OR MATCH YOUR REQUIRED COLOUR

Stockists of:

FARROW & BALL

Little Greene

3M

MYLANDS

Frenchic

Dulux

JOHNSTONE'S

osmo

and many more fine brands

FREE\*  
DELIVERY

Order by 4pm for  
free same day delivery.  
We deliver until 9pm!

\*Based on a radius of 20 miles from CL8 8HW or SN16 0BX and a minimum order value of £25.  
\*\*Terms and conditions apply.

#### BRANCHES

RYALLS MALMESBURY  
Unit 1 Park Road Centre  
Park Road, Malmesbury  
SN16 0BX

RYALLS TETBURY  
Priority Industrial Estate  
London Road, Tetbury  
GL8 8HW

#### HOURS

Monday - Friday 7am - 5pm | Saturday 8am - 1pm



## SHERSTON CONGREGATIONAL CHURCH

In the British Schoolroom, Cliff Road, Sherston

### January Services

6th January, 11.00am - Revd Andrew Williams Tarling  
13th January, 11.00am - Rev Andrew Williams Tarling (Communion)  
20th January, 11.00am - Revd Andrew Williams Tarling  
27th January, 11.00am - Revd Andrew Williams Tarling  
Sunday School each week from 10.15am to 11.00am - please use Cliff Road entrance

### Bible Study Group

Mondays 7th January and 21st January  
from 8pm in the British School Room

### Prayer Group

Mondays 14th and 28th January  
from 8pm in the British School Room

# Malmesbury League of Friends gives £35,000 to GWH incubator appeal

Malmesbury League of Friends (MLOF) has donated £35,000 towards the Brighter Futures Special Care Baby Unit Appeal to purchase five new incubators at Great Western Hospital in Swindon.

The Appeal aims to raise £175,000 to purchase five state-of-the-art Drager Babyleo neonatal incubators. These new incubators, which will replace the existing 15-year-old machines, will respond to the changing and complex demands of these tiny patients from delivery to discharge, creating a seamless healing micro-environment for them.

Each incubator costs £35,000 and, at its recent meeting, MLOF decided, in effect, to purchase one machine. MLOF was the recent beneficiary of a substantial legacy from a former Malmesbury resident, which has enabled it to make the donation, the largest single sum it has made.

MLOF Chairman David Hide said: 'We were delighted to support this very important Appeal. The new incubators will be a great benefit to those living in or near Malmesbury, for whom GWH is their main hospital.'

Catherine Newman, Head of Brighter Futures, said: 'We are extremely grateful to MLOF for this very generous donation, which will take us very close

to our target, which we are confident we will reach by Christmas.'



## Powered Spaces Ltd Electrical Services

Local and reliable

Free, no obligation quote.

Outdoor lighting specialist.

Fully insured and registered.

Local references available

Please call on: 01453 860084

Mobile: 07775505375

Email: [mark.hanson@poweredspaces.com](mailto:mark.hanson@poweredspaces.com)



## Foxley Plumbing & Heating

Oil Boiler Installation, Servicing and Repairs

Oil Tank Replacement

Heating Installation and Repairs

Bathroom Installations

Unvented Cylinder Systems

No Job Too Small

**Tim Hibbard**

Malmesbury (01666) 822863

Mobile 07966 462202

Email [foxleyph@btinternet.com](mailto:foxleyph@btinternet.com)



## M. Vincent Windows & Glazing

**For all your glazing needs**

Wiltshire & Gloucestershire areas

Fast, friendly and efficient service

Available at your convenience 7 days a week

**CALL FOR YOUR FREE QUOTATION**

**07890 138453 / 01666 460106**

**[enquiries@mvincentwindows.co.uk](mailto:enquiries@mvincentwindows.co.uk)**

**[www.mvincentwindows.co.uk](http://www.mvincentwindows.co.uk)**

## *Shear Class & Serenity*

Uni-Sex Hair Salon and Beauty Salon

Sherston 01666 840840



**Tuesdays - Saturdays  
Late Opening and Reduced Rates for  
Senior Citizens on Thursdays**

*For all your Hair & Beauty  
Treatments*

*Appointments not always necessary  
please call in*

**MATRIX**

**BIOLAGE**

## Lumley Garden & Pet Supplies

Stainsbridge Mill, Gloucester Road, Malmesbury, Wiltshire, SN16 0AJ

Tel: 01666 822325 E-mail: [etlumley@googlemail.com](mailto:etlumley@googlemail.com)

[www.lumleypetsupplies.com](http://www.lumleypetsupplies.com)



\* Top Leading Brands of Food & Treats \*

\* Our Own Label Premium Dog Food \*

\* Bowls, Toys & Accessories \*

\* Beds & Cushions \*

\* Wild Bird Food & Products inc. Live Food \*

" for you and your pet's every need. "

Delivery Service Available



## Optimum Mobility



Also walking aids, bathing & household aids

The Old Dairy, Pinkney Park, Near Sherston

01666 840060

[www.OptimumMobility.co.uk](http://www.OptimumMobility.co.uk)



Allington Bar Farm,  
Chippenham, SN14 6LJ  
Tel: 01249 658112

Open 7 days 9am – 6pm  
Mon – Sat  
& 10am – 5pm on Sundays.

## Quality Local Produce

**Home produced Pork, Lamb, Beef & Goat**

Home Made Sausages & Burgers

Local Free Range Poultry

**All available daily from our Butchery**

**Locally made Preserves, Chutneys & Pickles**

Somerset Jersey Organic Milk & Cream

**Local Cheeses & Home Cooked Meats**

Extensive range of local Ice Cream

**Locally Grown Fresh Fruit & Vegetables**

Homemade Cakes & Pies

**and many more local ingredients .....**

## Small Ads

*You can now advertise items for sale or wanted in the Cliffhanger including services required such as gardening or cleaning. Cost is £2 for up to 20 words. Copy should be in paper form and put through the letterbox at 37 High Street by the 15th of the month together with £2 in cash.*

*All monies raised will be donated to charity.. Private advertisers only please – no businesses.*



**PHYSIO EXCELLENCE**  
PHYSIOTHERAPY AND SPORTS INJURIES

**Private physiotherapy  
clinics at Sherston  
and Malmesbury  
doctor's surgeries  
with no waiting list**

Experienced in the diagnosis  
and treatment of:

- All aches and pains, back, neck and joint problems
- 1:1 and small group physio lead Pilates
- Knee and hip replacement
- Shoulder rehabilitation
- Sports injuries
- Hydrotherapy (Nr Chippenham)
- Children, teenage and adult posture

Advice as to whether you need  
an MRI, XRay or consultant referral.  
Recognised by all major insurance

**FOR AN APPOINTMENT PLEASE CALL:**

**01249 730 132**

SHERSTON LACOCK CORSHAM MALMESBURY CHIPPENHAM

**Andy Walden**

Sherston, Malmesbury

**Fencing, hedge  
cutting, clearance  
& other work considered**



Fully insured

**07810 136778**



**HMH CONTRACTING LTD**

General Builders

Tel 01666 841412

Email [info@hmbhs.co.uk](mailto:info@hmbhs.co.uk)

- \*Extensions
- \*New Builds
- \*Kitchens
- \*Bathrooms
- \*Listed Buildings and Renovations
- \*Architectural Design and Planning Service

**COMPLETE BUILDING SOLUTIONS FROM START TO FINISH**

In Association with Partridge Architectural Services 07833433872  
Email [drawings@partridgehouse.co.uk](mailto:drawings@partridgehouse.co.uk)



# Groups and Regular Events in and around Sherston

## Sherston

### Sherston 1016

Fundraising for local good causes and charities. For further details, contact sherston1016@gmail.com or 07717 424619.

### Ashtanga Yoga class

A strong flowing practice for mind and body (beginners to advanced): Mon 10.30-11.30am and Fri 10.30-11.45am Sherston village hall. More info – Stuart 07986 003602 stuart@pulse4life.co.uk or www.pulse4life.co.uk

### Sherston Baby and Toddler Group

The group is a fun way for babies, toddlers and their parents to meet and play. Meets at 10 -11.30am each Tues in the British School Rooms with toys for all stages from wrigglers to toddlers, craft activities, music and snacks for all, and a cup of tea/coffee for the deserving parent. For further details contact sherstontoddlergroup@gmail.com or like us on Facebook for regular updates www.facebook.com/sherston.toddlers

### Sherston Badminton Club

We play every Tues evening from 7.30pm in the Village Hall from Sept to the end of May. New members welcome – mixed ages (over 18) and abilities. For more information, contact. David Boyle 841587, 07740 188882 or email diboyle@hotmail.com

### Sherston Brick Club

Brick Club is open to everyone who is a fan of LEGO, so all children of all ages, with only one rule - use your imagination to the maximum! We meet on alternate Fridays from 5.30 to 7pm in the Congregational Church, Cliff Rd. Free Entry

### Sherston Brownies

Meet every Weds during term time 5.45 – 7pm in the Scout Hut. All girls are welcome to join after their 7th birthday, but there is a waiting list. Visit [www.girlguiding.org.uk](http://www.girlguiding.org.uk) and follow the parents link to register your interest, for all other queries contact Tawny Owl (Nicky) at nicky.gray@btinternet.com

### Holy Cross Church

The Coffee Shop - Fair Trade tea and coffee with homemade biscuits and brownies - Open Thurs 9.30 am – 12 noon till Easter  
Sunday services 8am Holy Communion; 1st and 4th - Holy Communion, 2nd - Worship Together - a service for all age groups preceded by breakfast at 9am, 3rd - Family Service preceded by breakfast at 9am See the Parish Life for more details  
Mustard Seeds is a Sat am club for children aged 4 and over, from 10am – 12noon twice a month. Contact Becky Fisher 07974 030212 or becky.fisher@deanery.org.uk

### Sherston Community Choir

The community choir with conductor Trudi Baker meets at 7.30pm each Wed in term time in the British Schoolroom. £3 per session. All welcome. Further information from Sheila Cutcher sheilacutcher28@gmail.com or 840067, or on Facebook.

### Congregational Church – in The British Schoolroom.

11am Service, Communion every 2nd Sunday of the month led or hosted by Reverend Andrew Williams Tarling. Sunday School 10.15 – 11am use Cliff Road entrance. Alternating Mondays 8pm, Bible Study or Prayer Group Brick (Lego) Club alternate Fridays 5.30 – 7pm. Contact Minister - Andrew Williams Tarling -minister4sherstonconchurch@outlook.com /07921 390878 Admin/Bookings - Victoria Meheust - sherstonconchurch@outlook.com Secretary.- Candi Williams Tarling - secretary4sherstonconchurch@outlook.com or find us on Facebook.

### Methodist Church

Services every Sunday at 10.30am apart from 3rd Sunday in the month when service is held at Luckington. For further details see the Parish Life

### Church bell ringing

Practices are every Wednesday 7.30 – 9 pm. Call Geoff Martin 840375 or come along.

### Sherston Magna Cricket Club

Junior nets Mon 6pm and Senior nets at 6.30pm on Tues nights at Pinkney Park. If you would like to get involved with local cricket please email cricket@sherstonmagnacc.co.uk or visit the website [www.sherstonmagnacc.co.uk](http://www.sherstonmagnacc.co.uk)

### 1st Sherston Cub Scout Pack

Cubs is open to both girls and boys aged between 8 and 10 ½ years old. The Pack has regular meetings on Friday nights in term times from 6.30pm to 8pm. There is a waiting list for Cubs, email join@sherstonscouts.org.uk for an application form

### Sherston Drama Group

The Drama group puts on plays and pantomimes in the Village Hall. If you are interested in taking part or helping out contact Sue Lehrer (Chairperson) [lehrer.sue@icloud.com](mailto:lehrer.sue@icloud.com) or 07780 661830

### Drawing Classes in Sherston

Classes are held in the British Schoolroom during term times Weds either 10am to 12noon or 1.30 to 3.30pm. Students have individual attention and the classes are friendly and welcoming. We work on observational drawing in a range of media, pencil, watercolour crayon and pastel; subjects include plants and flowers, natural objects and still life groups. For further information please contact Heather Martin [heather@geoffmartin.plus.com](mailto:heather@geoffmartin.plus.com) or phone 840375

### Sherston Whitewall Explorers

Explorers is open to both girls and boys aged between 14 and 18 years old, you don't need to have previously been a member of Scouts or Guides to join us. We meet at the Scout hut on Friday nights between 8.30pm and 10pm during school term times, if you are interested please email [join@sherstonscouts.org.uk](mailto:join@sherstonscouts.org.uk) to obtain an application form

### Sherston Town FC

The club plays in the Stroud league at Knockdown Park on Sat afternoons - spectators and new players welcome. For more details contact Pete Brock on 07912 777647 or [peter.brock666@btinternet.com](mailto:peter.brock666@btinternet.com)

### Footpaths Group

'Sherston Walks - a guide to local Rights of Way', featuring 10 local walks is on sale at the Post Office. If you would like to learn more about the Footpaths Group contact Maggie Harries on 841047 or [maggie@harriespartnership.com](mailto:maggie@harriespartnership.com) or visit [www.sherstonwalks.org.uk](http://www.sherstonwalks.org.uk)

### Forest School

Independent sessions led by local outdoor learning specialist Niki Walden, that include an after school club at Sherston Primary School, weekly curricular sessions at Luckington School & Luckington Pre-School and occasional further fun extended sessions during school holidays. For further information please contact [nikiwalden-forestschool@hotmail.co.uk](mailto:nikiwalden-forestschool@hotmail.co.uk)

### Fresh Air Fitness

Total body outdoor workout for all levels (beginners to advanced) on Sherston Rec Mon & Fri 9 -10am. Info: [www.pulse4life.co.uk](http://www.pulse4life.co.uk) Stuart 07986 003602 or [stuart@pulse4life.co.uk](mailto:stuart@pulse4life.co.uk)

### Sherston Netball Club

Training every Mon at 7.30pm at Westonbirt Leisure Centre. All ages and abilities welcome. £3 per session. For more info, please contact Lauren (07885 597429), Saara (07739 552336) or Kate (07792 064438).

### Parish Council Meeting

Takes place on the 2nd Thurs each month at 7.30pm in the village hall. Minutes of meetings can be read online at [www.sherston.org.uk](http://www.sherston.org.uk). Further details contact the Clerk at [clerk@sherston.org.uk](mailto:clerk@sherston.org.uk)

### Sherston Pilates

Daytime and evening classes held in the village hall. Run by Saara Sharman, Chartered Physiotherapist. All ages and abilities welcome. For more details contact Saara on 07739 552336 or [sherstonpilates@gmail.com](mailto:sherstonpilates@gmail.com)

### Rattlebone Boules League

Consists of 48 teams playing in 3 Leagues Playing season Apr – Aug. For more information, contact Tony Towle on 840574.

### 1st Sherston Scout Troop

Scouts is open to both girls and boys aged between 10½ to 14 years old. We meet at the Scout hut on Tuesday nights from 7pm to 9pm during school term times. There is a waiting list for Scouts, email [join@sherstonscouts.org.uk](mailto:join@sherstonscouts.org.uk) for an application form

### Senior Club

Meets at 2.30pm during summertime 2pm during winter in the British School Room, more details call Helen Quirk 840516.

### Sherston Short Mat Bowls

Meet every Thursday at 7.30 p.m. in the Village Hall. New members welcome – bring flat shoes, we have the woods. For more information contact Tony Weedon 841377 or Anne Andrews 840941

### Sherston Tennis Club

The tennis courts are located on Knockdown Road, next to the football pitch. If you're interested in joining the club or using the courts, please contact Nic Riley on 840682 or [nic50riley@gmail.com](mailto:nic50riley@gmail.com)

### Sherston Theatre Club

Excursions with a Sherston High Street-to-venue return coach service. Annual fee £20. Listings under [www.communicate.co.uk/](http://www.communicate.co.uk/)



wilts/sherstontheatreclub/ or contact Helen Quirk on 840516 or helenandjim@thequirks.plus.com

#### **Sherston Velo**

A cycling club formed of enthusiastic road cyclists from Sherston and the surrounding area. There are regular rides each weekend morning with a fast paced group leaving first for an hour, followed by a longer club run. For membership and other information about the club, visit the website [www.sherstonvelo.cc](http://www.sherstonvelo.cc) or email Mark Walsh at [secretary@sherstonvelo.cc](mailto:secretary@sherstonvelo.cc)

#### **Sherston Village Hall**

Available for hire by all. Ideal for meetings, events, parties etc. For details Chris and Tony Weedon 841377 or email [dogleg3@gmail.com](mailto:dogleg3@gmail.com)

#### **Village Hall 300+ Club**

For an annual subscription of only £6, give yourself the opportunity of winning a cash prize in every monthly draw whilst supporting the Village Hall. If you would like to join, or need more information, contact the coordinator, Lin Prior on 840846 or [linmaryprior@gmail.com](mailto:linmaryprior@gmail.com)

#### **WEA Sherston Arts, Literature and History Courses**

The WEA (Workers' Education Association) offers courses on the Arts, Literature and History in the British School Room, Cliff Road. For more information or to book a place contact Warwick or Pat Jones on 840764 or [warwickandpatjones@gmail.com](mailto:warwickandpatjones@gmail.com)

#### **Sherston W.I. (Founded 1940)**

Meetings on first Thurs of the month. May– Sep in the Village Hall at 7.30pm and Nov – Apr in the British Schoolroom at 2.30pm. Jan & Oct no meetings but lunch/dinner. Visitors always most welcome £3.50. Further information: Secretary 840578.

#### **Sherston Young Craft Group**

Every Monday during term time from 6.45 - 8.15pm in the small Village Hall for children aged 9 and above. To join, please email [sherstoncraftclub@outlook.com](mailto:sherstoncraftclub@outlook.com)

#### **Yoga for All**

Mon evenings 7.45-9.15pm in the village hall. Drop in rate £9 reducing to £7.50 if you take up the course. More details contact Theo 07818 401110 or [theo@wildyoga.co.uk](mailto:theo@wildyoga.co.uk) [www.wildyoga.co.uk](http://www.wildyoga.co.uk)

#### **Avonvale Utd FC**

The youth section trains at The Recreation Ground, Shipton Moyne every Saturday morning (from 1 Sep – 31 May) from 9.30am, with FA qualified coaches. We welcome boys and girls age 6+ of all abilities and confidences to enjoy the beautiful game, whilst developing at their own pace in a friendly and calm environment. For more details email [avonvaleutdfc@outlook.com](mailto:avonvaleutdfc@outlook.com) or call Jo Hargreaves on 07518 017363

#### **Boules at the Bull**

Friendly boules club at the Red Bull Inn (Malmesbury Rd) - meets every Thurs at 7.15pm – any level. For the more competitive members, there is a team playing in the Cotswold Pétanque league. To enter, please contact Sue McKechnie on 840601 or [susannemckechnie@hotmail.co.uk](mailto:susannemckechnie@hotmail.co.uk)

#### **Carer Support Wiltshire - Monthly carers café**

4th Thursday each month 10.30am – 12pm at the Kings Arms Hotel, Malmesbury - come along to chat with other carers over a hot drink or two. CSW is a charity with a team of support workers who can provide information and support to carers living in Wiltshire, by phone or face to face, along with counselling and advice relating to your role. Free and confidential for anyone aged 18+. CSW offers the chance to have a break through social cafés, days out, activities, craft groups and complementary therapies. More details or to register for some support, visit [www.carersinwiltshire.co.uk](http://www.carersinwiltshire.co.uk), email [info@carersinwiltshire.co.uk](mailto:info@carersinwiltshire.co.uk) or freephone 0800 181 4118 (01380 871690 from a mobile).

#### **Castle Combe Colts Football Club**

Join a charter standard club with CRB checked FA qualified coaches, fantastic playing & training facilities and a healthy inclusive culture – take a free 4week taster session. Currently recruiting for the following age groups: Mini-Kickers (Rec/Y1) U10 (Y5) U11 (Y6). Tel 837286 or [secretary@cccfc.co.uk](mailto:secretary@cccfc.co.uk) [www.cccfc.co.uk](http://www.cccfc.co.uk)

**Easton Grey Parish Church** See Parish Life for details of services

#### **Gauzebrook Church for Children**

Children are welcome at all the services which are held in the Gauzebrook Group churches but there are some occasions which are particularly for them: Junior Church is held at Court House, Hullavington at 11.00am now on the first Sunday of each month, except for August. This is for children from 3 to 11+. Any children under 3 need to be accompanied by an adult. Contact Becky Fisher 07974 030212 or [becky.fisher@deanery.org.uk](mailto:becky.fisher@deanery.org.uk)

#### **Hogwards**

The Help a Hedgehog Hospital charity has a satellite hospital in Tetbury. Mary Hinton 07779 299224 [www.helpahedgehog.org](http://www.helpahedgehog.org)

#### **Ingleburn Trefoil Guild**

Meets on the 3rd Monday of the month, usually at St. Mary's School Tetbury at 7.30 p.m. Lifts are available for non-drivers in the

Sherston/Malmesbury area. Details from Helen Price, 503187 or [retreatcottage17@btinternet.com](mailto:retreatcottage17@btinternet.com)

**Link** Link provides a voluntary car service for residents living in the Malmesbury area, taking those in need to hospital, the chiropodist, GPs' surgeries and to visit sick relatives. For further information, prospective volunteers can contact the Link co-ordinator and volunteer support officer on 840861 9am-1pm

#### **Luckington Pre-School**

A well-established Montessori inspired Pre-School, for 2½ to 5 years old. Mon-Fri 9am-1pm, during term time. Government funding available and childcare vouchers welcome. Ofsted rated Outstanding For more information, call 840028, email [chair@luckingtonpreschool.org.uk](mailto:chair@luckingtonpreschool.org.uk) or visit [www.luckingtonpreschool.org.uk](http://www.luckingtonpreschool.org.uk)

#### **Malmesbury Area Board Meeting**

For details see [www.wiltshire.gov.uk/areaboards](http://www.wiltshire.gov.uk/areaboards)

#### **Malmesbury Concert Band**

Rehearsals on Fri evenings in Malmesbury, 7.15 – 9.15pm for performances at local bandstands. For further details see our website [www.malmesburyconcertband.org.uk](http://www.malmesburyconcertband.org.uk) or contact Tony Fleming, the Musical Director, on 575229 or [musdir@malmesburyconcertband.org.uk](mailto:musdir@malmesburyconcertband.org.uk)

#### **Malmesbury Community Choir**

The Malmesbury Community Choir is a non-audition performing choir that meets for rehearsals in the Old School Room at the Town Hall every Monday evening from 7.30-9.30pm. The waiting list is currently full for ladies, but we would always welcome extra men and young people between 14-21 years old. Membership is £50 per quarter, but membership for U18s is free and U21s is half price. For further information please email [info@malmesburycommunitychoir.org](mailto:info@malmesburycommunitychoir.org), visit the website at [www.malmesburycommunitychoir.org](http://www.malmesburycommunitychoir.org) or <https://www.facebook.com/MalmesburyCommunityChoir>.

#### **Malmesbury Embroiderers' Guild**

The local branch holds monthly meetings at Little Somerford Village Hall. On alternate months there are Saturday workshops on a wide range of topics, and on the intervening dates there is a Tuesday evening talk at 7.30pm. We always welcome newcomers and occasional visitors, although pre-booking is essential for the workshops. Just turn up for the talks – non-members £5. For further information please phone Heather Martin 840375 or [www.malmesburyembroiderers.blogspot.com](http://www.malmesburyembroiderers.blogspot.com)

**Malmesbury Film Society** Memorable new, classic and foreign films are shown at 7.30pm every 3rd Sunday of the month at St. Mary's Hall, Malmesbury - no booking or membership necessary. Join us for unique films and an enjoyable evening out. See our website [www.malmesburyfilmsociety.org.uk](http://www.malmesburyfilmsociety.org.uk) for details on all upcoming films.

**Malmesbury Luncheon Club** Over 60s meet every Wednesday at midday in the Wesleyan Room of Malmesbury Town Hall for a chat and a 2 course lunch followed by tea or coffee, apart from during school holidays. £3.50 Please call Helen Churchill on 840080 if you'd like to attend. New members most welcome. Volunteers also needed to prepare and serve lunch, no washing up.

#### **Malmesbury Rainbows, Brownies, Guides and Rangers**

For details contact the Division Commissioner at [malmesbury@wncounty.org.uk](mailto:malmesbury@wncounty.org.uk) or visit [www.girlguidingwiltshirenorth.org.uk](http://www.girlguidingwiltshirenorth.org.uk)

#### **North Wiltshire Villages Flower Club**

meets at 7.30pm on the 3rd Wed evening at Crudwell Village Hall. Members come from the surrounding villages to hear speakers and enjoy floristry demonstrations and do workshops and competitions. Further details call Margaret Stanford on 01285 770639

**Rotary Club of The South Cotswolds** Meets at The Horse Guards Inn in Brokenborough each Mon at 7pm, with dinner served at 7.30pm.

Visitors are always welcome to our speaker meetings, as are guests and anyone interested in Rotary and in helping the local Community. Further details at website [www.rcsc.co.uk](http://www.rcsc.co.uk) or from Ian Pegg on 840986.

#### **Tetbury Camera Club**

Meets every Tues evening from Sept to end of May at 7.30pm in The Priory Inn, Tetbury. For more information and current programme visit <http://tetburycameraclub.org.uk/> or call Liz Cooper 840482. Visitors welcome.

#### **Wiltshire Walks**

The walk lasts approximately 30-60 minutes - 3 levels available - and often ends with a cup of tea or coffee. Further information contact Rosie on [rosie.golding@wiltshire.gov.uk](mailto:rosie.golding@wiltshire.gov.uk) or 07917 599964. For a full list of walking groups in Wiltshire please visit [www.walkingforhealth.org.uk/walkfinder/get-wiltshire-walking](http://www.walkingforhealth.org.uk/walkfinder/get-wiltshire-walking)

*If you run a club, society or organisation in Sherston that holds regular events such as the above and wishes to be listed, please supply your details and we will add them to the Regular events list. If you have a particular event then please write a short piece about it and we can include it as an article and put the details in the What's On list for that month.*

# WHAT'S ON

## What's On January 2019

If you're planning a community event in the parish why not let the Cliffhanger have the basic details as soon as possible? Email [info@sherstoncliffhanger.co.uk](mailto:info@sherstoncliffhanger.co.uk) to add the event to this list. Everyone will then know what's occurring in good time and it will help prevent events clashing.

### Sherston

#### Wiltshire Council Mobile Library

In Sherston Every fortnight on Saturdays 10.30am – 12.45pm  
2019 Jan 12, 26 Feb 9, 23 Mar 9, 23 Apr 6, 20 May 4, 18  
Sherston High Street  
For further details call [clerk@sherston.org.uk](mailto:clerk@sherston.org.uk) or  
[mobilelibraries@wiltshire.gov.uk](mailto:mobilelibraries@wiltshire.gov.uk)

#### The Angel Hotel

Check Facebook or boards for details of events, call 841627 or  
[contact@sherstonangel.co.uk](mailto:contact@sherstonangel.co.uk) or visit [www.sherston-angel.co.uk/](http://www.sherston-angel.co.uk/)

#### The Carpenter's Arms

For further details call 840665 or visit  
[www.facebook.com/carpenters.armssherston](http://www.facebook.com/carpenters.armssherston)

#### The Rattlebone Inn

Monday Quiz Nights Every Monday at 7:30pm Free entry and prizes for the winning team. Check boards for more details of events  
For further details call 840871 or follow on Twitter or visit  
[www.therattlebone.co.uk/](http://www.therattlebone.co.uk/)

#### Sherston WI Talks

Members' Lunch at the Old Royal Ship 17-Jan  
AGM 7-Feb-19  
For further details call Jill Woodward 840578 or  
[jillwoodward222@btinternet.com](mailto:jillwoodward222@btinternet.com)

#### Sherston Senior Club

AGM and a Quiz and Bingo 15-Jan If space allows, visitors are welcome to come on our outings please contact Helen Quirk 840516 for more information. British School Room.  
For further details call Helen Quirk 840516

#### Art Exhibition at Shear Class Salon

Exhibition by local artists Drop in and see the local art exhibited in the Salon next to the Post Office. All art is for sale! Anyone can call in to see them – you don't have to be attending the salon. There will be details about each artist but all are local and have exhibited in the Sherston Arts Festival. Shear Class, High St

#### Rural Arts Wiltshire

Bookends – Simon and Garfunkel through the Years A unique concert, celebrating the music of Simon and Garfunkel. Bookends' delicate recreation of the unmistakeable sound of the American folk-

rock duo is something of a masterpiece. Hear many of the hits such as The Sound of Silence, Mrs Robinson and Bridge over Troubled Water. Tickets from Sherston Post Office Stores or 840375 - £14 or concessions £12 Sat 26 Jan 7.30pm Bar available Village Hall  
For further details visit [www.ruralartswiltshire.org.uk](http://www.ruralartswiltshire.org.uk),  
[www.simonandgarfunkelthroughtheyears.com](http://www.simonandgarfunkelthroughtheyears.com)  
Or [www.facebook.com/simonandgarfunkelthroughtheyears](https://www.facebook.com/simonandgarfunkelthroughtheyears)

#### Sherston Pop Up Curry Takeaway

Fundraiser for Sherston Primary School A team of chefs will be working hard to bring you fragrant, freshly made curries. There will be a range of set menus to suit both meat lovers, vegetarians and vegans as well as those who are gluten free. Menus will be published in on the Sherston What's Occurring facebook page as well as on notices boards around the village. Sat 26 Jan 5.30pm-8.30pm British School Rooms. As all meals will be made to order there may be a delay at busy periods so why not enjoy a drink from our licensed bar, which will stock a range of beers and cider and prosecco.

#### Friends of Sherston School

Annual Fundraising Quiz Night Sat 2 Feb Bar opens 7.30pm Quiz starts at 8pm, raffle and auction. £20 for a team of up to 4 All proceeds go towards funding new iPads for Sherston School. Tickets go on sale Fri 6 Jan and are available from the Post Office Stores or pick them up at school from Sophie Cheetham or Kirsty Strachan. Sherston Village Hall  
For further details call Tickets on sale at the Post Office or call Emma 841402 or email [emmanewby@gmail.com](mailto:emmanewby@gmail.com)

#### Knockdown

##### The Holford Arms

Live Music every weekend. Check boards for more details of events  
For further details call 01454 238669 or [info@theholfordarms.co.uk](mailto:info@theholfordarms.co.uk)

#### Sopworth Sopworth Ladies Club

Monthly meetings Meetings held at 7.30 pm in Sopworth Village Hall on the first Tuesday of each month Membership Fee: £8 plus £2 payable at each meeting. Visitors: £4 All visitors are welcome.  
For further details call Jayne Dickenson on 840930

#### Luckington

##### Luckington Youth Café

Weekly event for ages 11-16 Saturdays 6-6.30pm Big Questions & Discussions, 6.30-7.30pm Food, games and chill  
Luckington Village Hall  
For further details call Joel Faulkner [joel.p.faulkner@gmail.com](mailto:joel.p.faulkner@gmail.com)

#### Friends of Luckington Community School

Burns Night celebration 2 Feb 7.30pm - midnight- 2 course meal and a wee dram Tickets on sale at the Shop & Moor - buy them quickly to avoid disappointment as they are limited in number.  
For further details call [friendsofLuckingtonschool@gmail.com](mailto:friendsofLuckingtonschool@gmail.com)

#### Westonbirt The Arboretum

STIHL Treetop Walkway The main walkway is step-free, making it accessible to visitors on foot, using mobility scooters, wheelchairs and pushchairs and to those with dogs on leads. It is 300m long and gradually rises on gentle inclines to a height of 13m. Scramble up to the crow's nest viewing platform; cross the rope bridge; Peer through the mesh-floored section  
Specialist Wood Sales every Sat 10am-1pm in aid of FOWA

## Perfectly You

### Cosmetic Injections

Treatments that help soften the fine lines and wrinkles on your face:

- ☆ Free personal consultation prior to undertaking any procedure
- ☆ Forehead lines
- ☆ Frown lines
- ☆ Crows feet
- ☆ Treatment for excessive underarm sweating

Dr Pip Pettit BM FRCGP Aesthetic Practitioner, Sherston, Wiltshire Tel: 0796 7007 969 [www.perfectly-you-aesthetics.co.uk](http://www.perfectly-you-aesthetics.co.uk)





**CaniX or cani-cross is cross-country running with dogs in harness** Sat 2 & Sun 3 Feb - 10am. Registration from 9am. Children £10, Adults £18 Short course distance (approx. 2km available for children's classes and adult "have a go" - please see Canix website for full guidance and rules <http://www.canix.co.uk>

**Summer concerts - tickets now on sale** Thurs 13 Jun TBC; Paul Weller Fri 14 Jun Jack Savoretti Sat 15 Jun; Sun 16 Jun TBC Till Feb 2019 admission prices Adults £7, those arriving by bike or public transport £5, Children (5-18) £3, under 5s free, 1 carer allowed free per paying disabled visitor

For further details call 880220 or visit [www.forestry.gov.uk/westonbirt](http://www.forestry.gov.uk/westonbirt)

## Cotswolds Cotswold Rural Skills

Check website for courses which include:

**Hedgelaying - Beginners (Midlands Style)** Sopworth 12- 13 Jan 2019 £130

**Blacksmithing - Taster Day** 12 / 20 Jan Northleach £120

**Free car-free guide to the exploring the Cotswolds** The new look Explore the Cotswolds by Public Transport Guide is an invaluable information resource to traveling around the Cotswolds by bus, bike and train. Produced by the Cotswolds Conservation Board, the guide includes taster walks and cycle rides, attractions and places to visit. To download the 2017 guide click below, alternatively you can pick one up at one of the many visitor information centres in the and around the Cotswolds. <http://cotswoldsconservationboard.cmail20.com/t/i-l-uiliudt-uutjhnr-o/>

**Cotswold Lion magazine** The Spring/Summer issue of the Cotswold Lion magazine is now available to pick up or to view online. [www.cotswoldsaonb.org.uk/userfiles/file/publications/cotswold%20lion/cotswold-lion-36.pdf](http://www.cotswoldsaonb.org.uk/userfiles/file/publications/cotswold%20lion/cotswold-lion-36.pdf)

For further details call David Molloy on 01451 862000 or david.molloy@cotswoldsaonb.org.uk or visit [www.cotswoldsruralskills.org.uk/](http://www.cotswoldsruralskills.org.uk/)

## Malmesbury Movies@Malmesbury

Movies@Malmesbury is run entirely by volunteers. If you would like to help out with the running of Movies@Malmesbury please see a member of the staff at the end of a screening or email us [ghcooke@hotmail.com](mailto:ghcooke@hotmail.com) A limited range of drinks and snacks are available for purchase at the bar adjacent to the cinema. A few cushions are available for use during M@M programmes. Please ask for one, remember availability is limited so arrive early if you want one! There is no charge for the cushion. Tickets: 2pm Matinee & 5.30pm screenings: Adults £5. Under 16's £4. 8pm screenings: All tickets £6. Alternative Content (theatre, ballet, opera & art exhibitions) all tickets £10

## This month's films include:

Wed, 2	2pm	The Grinch
Thurs, 3	2pm	The Girl in the Spider's Web
Fri, 4	2pm	The Nutcracker and the Four Realms
Fri, 4	8pm	Widows
Mon, 7	2pm	Andre Rieu in Concert in Sydney, Australia *
Mon, 7	5.30pm	The Nutcracker and the Four Realms
Mon, 7	8pm	Fantastic Beasts: The Crimes of Grindelwald
Fri, 11	2pm	Widows
Fri, 11	5.30pm	Fantastic Beasts: The Crimes of Grindelwald
Mon, 14	7.30 pm	Andre Rieu in Concert in Sydney, Australia *
Mon, 21	5.30pm	Ralph breaks the Internet: Wreck it Ralph 2
Mon, 21	8pm	The Old Man and the Gun
Tues, 22	6.45pm	Queen of Spades (Royal Opera House Live) *
Fri, 25	5.30pm	Ralph breaks the Internet: Wreck it Ralph 2
Wed, 30	2pm	The Old Man and the Gun
Wed, 30	6.45pm	La Traviata (Royal Opera House Live) *

Malmesbury Town Hall For further details call Tickets are available at the Town Hall, on the door or online (a booking fee is payable) or visit [www.malmesbury.gov.uk/cinema.html](http://www.malmesbury.gov.uk/cinema.html)

## Malmesbury & District University of the Third Age

U3A is a unique organisation which provides educational, creative and leisure opportunities for retired and semi-retired people. There are over 400 members and around 40 different interest groups including arts and crafts, book group, history, gardening, dancing, theatre trips, languages, walking etc. U3A meets on the 4th Thursday of the month at Malmesbury town hall from 10- 11.45 for tea/coffee, a chat and to listen to our monthly speaker. Charge 50p No meeting in Dec

Susan Jones - 'The Suffragette movement in the Cotswolds' Thurs 24 Jan

Assembly Rooms at the Town Hall

For further details call Membership Secretary Ann Roberts-Phare on 823971 or visit [www.malmesburyu3a.org.uk](http://www.malmesburyu3a.org.uk)

### Tetbury Bookkeeper

Philippa Lark

Local References  
[phil.lark@hotmail.co.uk](mailto:phil.lark@hotmail.co.uk)  
01666 505824  
07771 914512

## PAWS FOR THOUGHT

### PROFESSIONAL DOG WALKING AND MINDING SERVICE

- Bespoke service for you & your dog
- Knowledgeable in canine first aid, training and obedience
- Experience in handling both large & small dogs
- Group or individual walks available
- Fully insured in all aspects of dog care
- Established & recommended for 6 years

**Animal Minding Service** also available for cats & domestic pets. Animals are happier & more secure in their own environment. Daily visits provided to include feeding, grooming, tlc & medication if required

Please call Sophie Francis on 01666 840538 or 07531 057016

References available on request

## Do you want to know YOUR FAMILY HISTORY

Skeletons in the cupboard, convicts, statesmen, rich man, poor man, beggar man, thief? We all have them and they are hiding there waiting to be found.

Let me find them for you.

**Beryl Clampton**

Call anytime: 01666 841201 or 07850 623517  
e-mail: [beryl@clampton.com](mailto:beryl@clampton.com)

## C.J.GOUGH

### PAINTER & DECORATOR

41 The Tarters,  
Sherston,  
Malmesbury,  
Wiltshire  
SN16 0NT

Telephone:  
01666 841003

ALL MAKES OF CARS, FOUR WHEEL DRIVES AND LIGHT COMMERCIAL VEHICLES:

**R&B vehicle services**

- ✓ MOT Testing
- ✓ Vehicle Repairs
- ✓ Servicing
- ✓ Diagnostics

Free loan cars are available

Call us on 01454 238 700 or visit [www.mottetbury.co.uk](http://www.mottetbury.co.uk)



BAY 4, SHERSTON WORKS, KNOCKDOWN, TETBURY GL8 8QY

## Riverside Community

**Saturday Friends** 10.30am - 1.30pm and enjoy a cuppa and a friendly chat Drop in dates Sat 20 Oct, 17 Nov, 8 Dec - for possible transport assistance call 07888 383844

**Friends in Grief (FIG)** FIG is a free community-based drop-in café where anyone bereaved is most welcome - where you can talk with others experiencing similar thoughts and feelings in an informal and supportive setting every Tuesday, 2pm-4pm

**Nail Cutting Service** available at discounted rates from 18 Dec  
Riverside Community Centre For further details call or visit [www.riversidecommunitycentre.org.uk](http://www.riversidecommunitycentre.org.uk)

## Wiltshire Council Sunday Lunch Club

Monthly get together for those who'd like some company and a good Sunday lunch Each month 12.30pm for 1pm start. £10.50 pp Transport can be arranged if needed

For further details call Ellen Backer 07557 922020

## Malmesbury, Chippenham

### Programmes and Activities at The RISE Trust

**FREE Children's Centre activities** The RISE Trust supports many projects in North Wiltshire with 6 Children's Centres in Chippenham, Cricklade, Royal Wootton Bassett and Calne. We provide Children's Centre services for the Corsham and Malmesbury areas. We also run Youth services, such as mentoring and youth groups, and provide services to the elderly. The RISE Trust started as an initiative from a local church in Chippenham in 2004.

**Seniors' lunches** The Rise Trust Volunteers regularly serve a Community Lunch for Seniors at St Paul's Church Hall, Malmesbury Road, Chippenham at 12pm. This is a great way to make new friends and socialise. For more details please contact Vicky Watt on 01249 445288 or email [vickyw@therisetrust.org](mailto:vickyw@therisetrust.org)

**Youth Club and Youth Café** We run lots of activities for young people in Chippenham including a Youth Club and Youth Café Gemma Matthews 01249 464008 or [gemma@therisetrust.org](mailto:gemma@therisetrust.org)

For further details call 01249 463 040 or visit [www.therisetrust.org/programmesevents/](http://www.therisetrust.org/programmesevents/)

## Charlton Park

### WOMAD - World Music Festival

WOMAD - early bird tickets on sale till Jan 2019 Event dates Thurs 25 - Sun 28 Jul Featuring many world musicians and bands and exciting new artists - check website for the line-up Early bird

and SN16 3 or 4 day tickets with/without staying onsite More information at [womad.co.uk/tickets](http://womad.co.uk/tickets).

For further details call Reading Box Office on 0118 960 6060 or visit [www.womad.org/festivals/charlton-park](http://www.womad.org/festivals/charlton-park)

## Grittleton

### Moviola - the Touring Rural Cinema Scheme

**Mamma Mia! Here We Go Again** [PG] Wed 30 Jan Doors open 7pm for 7.30pm start £6 from Lesley or on the door 10 years after Mamma Mia! Sophie [Amanda Seyfried] is back in Greece. Now pregnant, she is struggling to find the strength to move into the most important chapter of her life. She retraces her mother Donna's [Meryl Streep] steps from the past as the film flashbacks to a young Donna [Lily James] in 1979 who is having the time of her life singing in a band and dating three very different men. Back in the present Sophie is wondering if she will discover who her real father is when an uninvited guest arrives, Grandma Ruby [Cher]. Also featuring Pierce Brosnan, Colin Firth and Julie Walters. Grittleton Village Hall

For further details call Lesley 01249 783157 or email [l\\_palmer@btinternet.com](mailto:l_palmer@btinternet.com) or visit [www.moviola.org/](http://www.moviola.org/)

## Tetbury

### Tetbury Goods Shed

**Vegetables from Aunt Addie's** Visit the amazing Ros for all your delicious locally grown vegetables. Adeline Farm is a farming venture with the emphasis on quality, fresh, local and seasonal produce. Although not certified as Organic they are committed to using organic methods ~ and to working with nature and respecting wildlife. They are also totally committed to producing the finest produce possible. 10am-2pm Adeline Farm Community Project offers facilities to the disabled, people with learning difficulties, and other groups in the Wilts. /Glos. area.

**Mary Griesse - Art Exhibition** Jan -Wed Through Sun 11am - 3pm Slightly Sheepish Livestock & Agriculture scenes in watercolours. Free entry for all

**Panto: Jack and the Beanstalk** 2 Jan

Join Jack on his Giant adventure as he climbs the Beanstalk to an enchanted land where the hungry giant lives. Tickets from £8. £30 for a family of 4 3pm - 5pm



A RELIABLE AND EFFICIENT

# BOILER SERVICE

from your local experts

  
 servicing & repairs

- ☒ Boiler Service and Maintenance
- ☒ Oil, Natural Gas and LPG
- ☒ Replacement and System Upgrades

Call our friendly team today on  
**01666 503 632**

Email [info@indplumbingandheating.co.uk](mailto:info@indplumbingandheating.co.uk)  
Web [www.indplumbingandheating.co.uk](http://www.indplumbingandheating.co.uk)

## Ride On Cycles

The Mobile Cycle Workshop That Comes to You

Full range of servicing & repairs carried out by a City & Guilds qualified mechanic.

Contact Andy on:  
**01454 880872 / 07443333219**  
[andy@ride-on-cycles.co.uk](mailto:andy@ride-on-cycles.co.uk)  
[www.ride-on-cycles.co.uk](http://www.ride-on-cycles.co.uk)

## Location, location, negotiation.

Stacks is the most experienced buying agency in the UK, finding the right houses and negotiating the best prices to save you time and money.

Call us to talk about what you are looking for.

Craig Fuller

Regional Director – Cotswolds, North Wiltshire, Bath & Cheltenham  
Stacks Property Search & Acquisition Ltd  
07767211707  
[craigfuller@stacks.co.uk](mailto:craigfuller@stacks.co.uk)

**STACKS**  
PROPERTY SEARCH & ACQUISITION  
[www.stacks.co.uk](http://www.stacks.co.uk)





Film **I Daniel Blake** (15) 3 Jan

**Just Jive Swing Jive Classes** 8, 15, 22 and 29 Jan. Learn to Swing Jive Dance at The Goods Shed on Tuesday evenings. Two Sessions: Beginners at 7pm and Intermediate at 8pm. Classes cost £6. Pay on the door 7 & 8pm

Film **The Rider** (PG) Jan 10

Film **The Little Stranger** (12A) 17 Jan

**Open Mic Sunday** 20 Jan The third Sunday of every month is Open Mic at the Shed for singers, musicians and poets. Performers please telephone Heather Bristow on 01666 503946 to book your time slot. Tickets just £5 7.30pm

Film **Crazy Rich Asians** (12A) 7.30pm 24 Jan

**Kim Cypher Jazz Band** 26 Jan Come and meet one of the UK's most exciting female saxophonists together with her band for an amazing night of jazz. Tickets £12.50 7.30pm

Talk: **The Science Behind Modern Gastronomy** 30 Jan With physicist Peter Barham who will explain some of the fascinating science behind how we use our senses to interpret the food we consume. Tickets £5 to £8 7.30pm

Films start at 7.30pm unless shown otherwise. Doors open 30 minutes before all performances and cost £5/£7. How to reach the Shed - use the sat nav postcode GL8 8EY For further details call [info@shed-arts.co.uk](mailto:info@shed-arts.co.uk) or visit [www.shed-arts.co.uk](http://www.shed-arts.co.uk)

## Didmarton

### Flicks in the Sticks

**Mama Mia Here we go again** 11 Jan £3 in advance £3.50 on the door Didmarton Village Hall For further details call Jenny Body 01454 238358 or [jenny.body@btconnect.com](mailto:jenny.body@btconnect.com)

### Horton & Little Sodbury Jigsaw Race

In aid of Horton & Little Sodbury Village Hall and HorseHeard Come along and join us for an afternoon of Jigsaw fun at the Horton Jigsaw Race. Teams of 4 will compete to see which team can complete a 500 piece jigsaw in the shortest time. Why not make up a team and test your jigsaw skills. Single entries are welcome, we will put you with others to make up teams of 4. Jan 20 2019 2pm – 5pm Tickets £5 including tea or coffee and a delicious piece of cake. Bar and refreshments available For further details call Lynn Edwards Tel: 01454 323848 or Alison Barlow Tel: 07973 382795 Email: [lynnedwards1258@gmail.com](mailto:lynnedwards1258@gmail.com) Email: [alisonmarybarlow@gmail.com](mailto:alisonmarybarlow@gmail.com)



We are redecorating our hotel bedrooms in January so will be holding a sale of soft furnishings and furniture

Saturday 12 January & Sunday 13 January 2019

10.30am – 3.00pm

Come and browse at your leisure in the Stable Suite

Cash and card payment only on the day

Easton Grey, Malmesbury, Wiltshire, SN16 0RB

Telephone: 01666 822 888

@whatleymanor

**McGILLS**  
Malmesbury

Chartered Accountants

## We will help your business run like clockwork

At McGills we are committed to providing a high quality, straightforward, no-nonsense service, aimed at saving you time, money and tax.

Tel: 01666 823201



Great partnerships start here...



[www.mcgills.co.uk](http://www.mcgills.co.uk)



McGills Malmesbury, 1st Floor The Barn,  
Cross Hayes, Malmesbury SN16 9BE

**sharpes**  
WINDOWS AND DOORS

Affordable, Quality Double Glazing

We provide an affordable and quality double glazing service that you can rely on.

- Windows
- Doors
- Replacement Glass
- Repairs and Replacements
- PVCu, Aluminium and Composite Products



PLANITHERM  
Installer Network



Tel: 01666 840 042 Mob: 07720 717 902  
[www.sharpeswindowsanddoors.co.uk](http://www.sharpeswindowsanddoors.co.uk)

## Crudwell

### North Wilts Villages Flower Club

Rachel Wilson "A Luxury Wedding" Competition - A single flower 16-Jan, Demonstration by Sally Taylor, 'You be the Judge' 20-Feb, Workshop, 'Pandora's Box' 20-Mar  
Crudwell Village Hall SN16 9HB

For further details call Margaret on 01285 770 639

## Cirencester

### The Barn Theatre

**Just So - The Musical**, by Rudyard Kipling till 13 Jan - Set to an eclectic, upbeat score; Kipling's Just So Stories are woven with wit and imagination into a song-filled journey through the jungle. Tue - Sat: 7.30pm Sun: 6pm Thu & Sat Matinee: 2.30pm Age guidance: Suitable for all ages

**Crimes on the Nile** Produced by New Old Friends Theatre Company 29 Jan - 2 Feb. Belgian detective extraordinaire, Artemis Arinae, is set to enjoy a holiday cruise along the river Nile when tragedy strikes once more. All the passengers and staff aboard are suspects, and the murder count is growing, will Arinae's little grey cells identify the murderer in time. Directed again by James Farrell (RSC, 39 Steps West-End) the cast of just four bring to life multiple outrageous characters, inventive set pieces and whisk the plot along in a romp.

**Téatro Bar & Restaurant** Cirencester's best-kept secret. Tucked away in the grounds of Ingleside House, right next door to the theatre; this contemporary restaurant serves top quality food and refreshing drinks. Using the finest ingredients, dishes are packed with flavour and inspired by world cuisine. The bar offers a huge selection, especially of gins. Wednesday - Saturday: 5.30pm to late (last table for food at 9.30pm) Call 01285 648238 or email [info@teatro-ciren.co.uk](mailto:info@teatro-ciren.co.uk) to book your table.

For further details call Box office: 01285 648255 or [boxoffice@barntheatre.org.uk](mailto:boxoffice@barntheatre.org.uk) or visit <https://barntheatre.org.uk>

## Wotton-Under-Edge

### The Electric Picture House

A refurbished local cinema run by volunteers from the local community This month: Mary Poppins Returns; Andre Rieu New Year's Concert from Sydney 2019 Sat 5 Jan; Shoplifters; NT Live:

The Tragedy of King Richard the Second - Simon Russell Beale Tues 15 Jan; Stan and Ollie; NT Live: I'm Not Running - 31 Jan; Exhibition on Screen: Young Picasso Tues 5 Feb  
heck website for details

For further details call 01453 844601 or visit [www.wottoncinema.com](http://www.wottoncinema.com)

## Wotton Bridge Club

Bridge lessons on Tuesday and Thursday evenings in the Wotton Civic Centre, from Oct onwards. £6 per lesson. Complete beginners welcome.

There is also a friendly club for relatively inexperienced players on Monday afternoons in Kingscote.

For further details call Ian Cooke on 890261 or email [tresham.bridge@gmail.com](mailto:tresham.bridge@gmail.com)

## Nailsworth

### Forest Green Rovers F.C.

Professional League 2 football only 25 minutes drive from Sherston. League 2 Home matches: Tues 1 Jan 3pm v Northampton; Sat 5 Jan 3pm v Grimsby; Sat 19 Jan 3pm v. Bury; Sat 26 Jan 3pm v Grimsby Advanced prices: Adults £21/£19/£16, Concessions £17/£15/£12, under 16s £8/£7/£5 junior - u11-£3/£0/£0 - match day prices add £2 per ticket Adults £15/£13, Concessions £10/£8, under 16s £2

The New Lawn Forest Green Nailsworth For further details call 01453 834860 or visit [www.forestgreenroversfc.com](http://www.forestgreenroversfc.com)

## Bath

### Theatre Royal Bath

**Panto: Peter Pan** starring Paul Nicholas and Jon Monie till 13 Jan £15-£33.50

**The Egg Christmas Show - The Scarlet Pimpernel** till 13 Jan Rain Man 15-19 Jan

**Moscow City Ballet: The Nutcracker** 20-23 Jan

**The Lady Vanishes** 28 Jan - 2 Feb

**Fame the Musical** 4-9 Feb

For further details call or visit [www.bathbachchoir.org.uk](http://www.bathbachchoir.org.uk) or [www.bathboxoffice.org.uk](http://www.bathboxoffice.org.uk)

## STANTON COMPUTER SERVICES

We come to you!

PC repairs  
Upgrades  
Installation of new hardware  
Wired and wireless networking  
Internet and email set up and coaching  
Virus cleansing

Please call Nick Greene on 01666 837850  
Mobile 07887 721396  
Email: [nick@computerfixer.org.uk](mailto:nick@computerfixer.org.uk)

Feel anxious about your size & want to fit into your nice clothes again?

Confused about all the conflicting Health & Fitness advice?

Call Christina or message "YES" to 07549 935831 & claim your **FREE** "How to get Healthier & become fitter" consultation.

I help you decide what kind/type of exercise to do, whether you need nutritional advice or not & how to fit these things in your life

"I help people move, eat, look & feel better through Physical Fitness, Nutrition & Coaching"



Facebook: C.C. Fitness  
[christinacroftfitness.co.uk](http://christinacroftfitness.co.uk)

[ccfitness4u@gmail.com](mailto:ccfitness4u@gmail.com)  
Offer ends 28-02-2018



HELPING OUR CUSTOMERS GET THE MOST FROM COUNTRY LIVING FOR GENERATIONS



VISIT OUR COUNTRY STORE

Open to the public and trade customers

Animal Feeds  
Animal Bedding  
Gardening Equipment  
Country Clothing  
Footwear



**T H WHITE**  
COUNTRY STORE

Sherston Works  
Knockdown  
Tetbury Glos GL8 8QY  
01454 238181  
[www.thwhite.co.uk](http://www.thwhite.co.uk)



## Bath, Stroud, Bristol Covent Garden Royal Opera House and Ballet @ the cinema

Live and pre recorded screenings of opera and ballet from the

Opera: The Queen of Spades 22-Jan

Opera: La Traviata 30-Jan

Ballet: Don Quixote 19-Feb

Stroud Apollo, Odeon Bath and many other Cinemas

For further details call 0871 220 6000 or visit [www.rob.org.uk/cinema](http://www.rob.org.uk/cinema)

## Malmesbury, Chippenham, Bath, Stroud, Bristol, Wotton National Theatre Live

Live and pre recorded screenings

The Tragedy of King Richard the Second 15-Jan

I'm Not Running by David Hare 31-Jan An explosive new play,  
with a cast including Siân Brooke.

For further details call or visit [www.ntlive.com](http://www.ntlive.com)

FIRST  
CLASS  
FREE

**PULSE4LIFE CLASSES**

**FRESH AIR FITNESS 0900**

**YOGA 1030**

**PILATES 1215**

**FRIDAYS IN SHERSTON**

**REC & VILLAGE HALL**

WITH STUART DUNN

---

[pulse4life.co.uk](http://pulse4life.co.uk) 07986 003602

Handmade curtains

Roman blinds

Roller blinds

Interior accessories

Upholstery

Gift shop

...and more!



*Lucy Tom*

INTERIORS

LucyTom Interiors, Noble Street, Sherston SN16 0NA

**Showroom:** 01666 841433

**Mobile:** 07813877509 **Email:** [lucy@lucytom.com](mailto:lucy@lucytom.com)

[www.lucytom.com](http://www.lucytom.com)

### Computer Problems?

Home or Business Support

We Come To You !

Fast Service, PC & Laptop Repairs, Virus Removal, Data Recovery  
Wireless Networks, Broadband & Email Setup, Security and Parental Control,  
Hardware and Software Sales. Microsoft Qualified, Local & Friendly.

**Silverchart Systems Ltd**  
[www.silverchart.co.uk](http://www.silverchart.co.uk)

**CALL US NOW !**


**01666 840531**      [office@silverchart.co.uk](mailto:office@silverchart.co.uk)

## Watercolour and Acrylic Workshops

[www.briansmithartist.com](http://www.briansmithartist.com)





Brian Smith professional artist  
Small groups (maximum 5 students)  
2 or 3 hour sessions weekly  
All abilities welcome  
Studio based at Pinkney Park, Sherston  
Contact Brian: 07778623344 Email: [briansmithartist@gmail.com](mailto:briansmithartist@gmail.com)



Lacock Photography

Know someone interested in photography? Want to give them something extra special this Christmas?

Look no further! Our fabulously festive gift cards are just the ticket! Lacock Photography gift cards can even be personalised, printed and sent to that very lucky person. Simple, thoughtful, and stress-free, in other words the perfect pressie!

[lacockphotography.com](http://lacockphotography.com)      Find us on  

## EMERGENCY RESPONSE

If you are in immediate danger call 999

The public version of Sherston's Emergency Response Plan can be found on the Sherston website:

[www.sherston.org/downloads/sherston-parish-council-emergency-plan/Sherston-Emergency-Plan-REDACTED-20-11-2015.pdf](http://www.sherston.org/downloads/sherston-parish-council-emergency-plan/Sherston-Emergency-Plan-REDACTED-20-11-2015.pdf)

**Sherston Emergency Response Coordinator**

[emergency@sherston.org.uk](mailto:emergency@sherston.org.uk) (only during an incident)

### Wiltshire Council

Highways, Social Care, Emergency Transport

24hr telephone contact: 0300 456 0100

[EPRR@wiltshire.gov.uk](mailto:EPRR@wiltshire.gov.uk) (only during an incident)

Floods: 0300 456 0105 or [drainage@wiltshire.gov.uk](mailto:drainage@wiltshire.gov.uk)

### Useful Information

Wiltshire Council Online Gritting routes

[www.wiltshire.gov.uk/parkingtransportandstreets/roadshighwaysstreetcare/gritting.htm](http://www.wiltshire.gov.uk/parkingtransportandstreets/roadshighwaysstreetcare/gritting.htm)

### Utilities

**ELECTRICITY** – SSEPD Power track

To report a problem or for information call 105

[www.ssepd.co.uk/Powertrack](http://www.ssepd.co.uk/Powertrack) for a map of faults

0800 072 7282 or 0345 072 1905 from a mobile phone

@SSEPD for updates on twitter

**WATER** – Bristol Water

[www.bristolwater.co.uk/contact/](http://www.bristolwater.co.uk/contact/)

Emergency Helpline: 0345 702 3797 (24 Hour)

**WATER** – Wessex water

[www.wessexwater.co.uk/Contact-us/](http://www.wessexwater.co.uk/Contact-us/)

Emergency Helpline: 0345 600 4 600 (24 hours)

**BBC Wiltshire can be heard via:**

West Wilts area

(Chippenham, Devizes and Trowbridge): 104.3FM

## Useful Numbers

BT fault line	0800 800151
CLARENCE (Highway complaints)	0800 232323
Cllr John Thomson	01666 840785
Malmesbury Activity Zone	01666 822533
Malmesbury Library	01666 823611
Malmesbury Police 101	(emergency 999)
Malmesbury Primary Care Centre	01666 825825
Malmesbury Secondary School	01666 829700
Malmesbury Youth Centre	0799 0908550
MP James Gray	01249 652851
Sherston Parish Council	07790 883503
Sherston School	01666 840237
Sherston Village Hall (bookings)	01666 841377
Sherston CoOp PO Stores	01666 840190
Tolsey Surgery	01666 840270
Wiltshire Council	0300 4560100



The Angel

Open every day from 8am  
Breakfast, Lunch, Speciality  
Coffee & Homemade Cakes

Afternoon Tea  
available by booking

Dinner available Thurs-Sat

8 Bedrooms,  
all en-suite

Private Dining/  
Function/Meeting  
space available

Contact@sherstonangel.co.uk 01666 841627

High Street, Sherston

**SHERSTON  
DRIVING SCHOOL**

Michael Holborow A.D.I.

Tel: 01666 840327

Mobile: 07790890978

[mike@sherstondriving.co.uk](mailto:mike@sherstondriving.co.uk)

**FOREVER  
LIVING  
PRODUCTS**



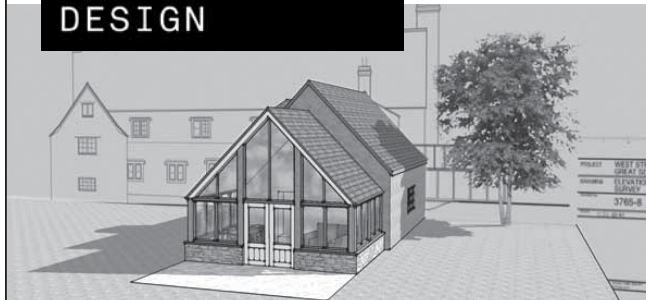
*Independent Distributor of  
Aloe Vera Based Products*

Improve income or health  
or both. Products sold,  
events organised. 60-day  
money-back guarantee.

Beryl Clampton  
01666841201/07850623517  
[beryl@clampton.com](mailto:beryl@clampton.com)

**ENQUIRIES WELCOME**

**SKETCHUP  
ARCHITECTURAL  
DESIGN**



**3D CAD Models and  
2D Drawings**



- Design and Visualisation
- Planning Applications
- Building Regulation Drawings

For a free initial consultation contact:

[info@sketchuparchitecturaldesign.com](mailto:info@sketchuparchitecturaldesign.com)

**07814 685 519**

[www.sketchuparchitecturaldesign.com](http://www.sketchuparchitecturaldesign.com)

Pinkney Park. Malmesbury. Wiltshire