

SHERSTON

NEIGHBOURHOOD PLANNING
WORKSHOP

JULY 2012





Contents

INTRODUCTION	1
PROGRESS TO DATE	2
COMMUNITY WORKSHOP	3
PROGRESS TO DATE	6
WORKSHOP OUTPUTS	7
WORKSHOP FEEDBACK	11
NEXT STEPS	11
APPENDIX A – WORKSHOP ATTENDEES	12
APPENDIX B – WORKSHOP EVALUATION	17

Introduction

Neighbourhood planning

Neighbourhood planning is a new tier of the planning system which seeks to give communities more control over the future of their area. Neighbourhood planning can help communities shape the future of their areas. This could include determining the location of shops, offices and schools to setting standards of design for new housing.

The Sherston Neighbourhood Plan has been chosen by the Government to be a 'Front Runner'. It is proposed that the plan will cover the administrative area of Sherston Parish Council (see map). The original front runner bid identified that the plan would seek to allocate any 'non strategic' development sites, where appropriate and establish any local policies that may be needed to compliment those set out in the Wiltshire Core Strategy.

Sherston front runner

Sherston Parish Council initiated the front runner application and as a qualifying body is leading the work with technical support provided by Wiltshire Council. Sherston Parish Council, on the 28 June 2011, unanimously agreed the application to the Area Board for Sherston to be proposed as Neighbourhood Planning Front Runner.

The Wiltshire Core Strategy Pre-submission document (2012) establishes a framework to help facilitate the development of neighbourhood plans across Wiltshire. In particular, these plans will identify and allocate small (non-strategic) development sites, thus ensuring that proposals for development at a local scale are truly led by the community. Neighbourhood planning may also offer an opportunity to address other area specific challenges to be identified through the neighbourhood planning process.

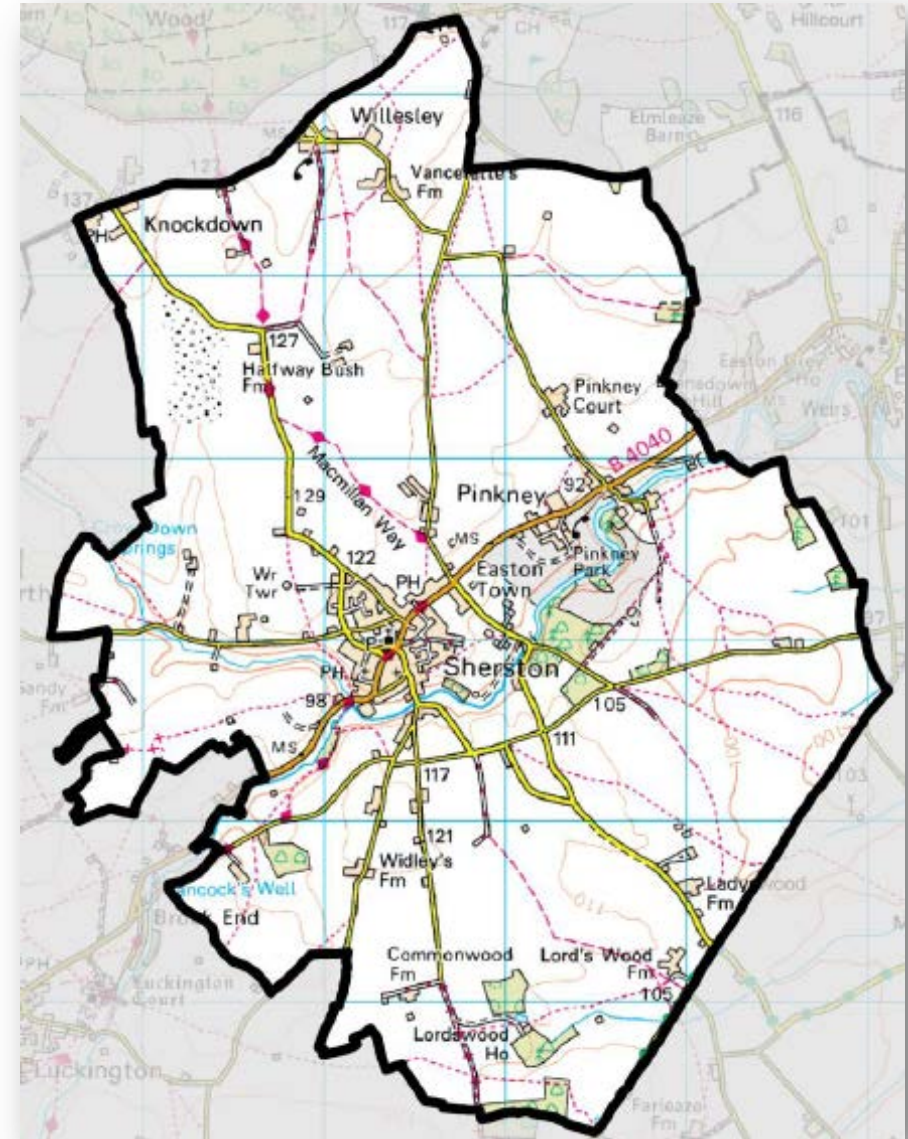


Figure 1 - Sherston Neighbourhood Plan Area

Progress to date

Steering group

Since gaining front runner status Sherston Parish Council has established a steering group which includes several local residents, community groups, local organisations and businesses. The steering group is governed by Sherston Parish Council. However the steering group is jointly responsible for managing the various stages of the process. Wiltshire Council provides a 'link officer' to provide support and advice throughout the plan preparation process.

Steering group members include:

- Sherston Parish Council
- Youth club
- Sherston schools
- Tolsey Surgery
- Sherston businesses
- Sherston Busy Hands Pre School
- Sherston Churches
- Sherston Green Wing
- Malmesbury Area Board
- Sherston Senior Club.

Developing a series of initial aspirations

The steering group have engaged with a number of community groups and local stakeholders to establish a series of initial aspirations to help inform the development of the draft plan. A summary of these aspirations are presented on the following page.



Initial aspirations:

- Improvements to the scout hut
- Potential re-location of the pre-school to purpose built premises
- Solution to school parking and travel issues
- Potential expansion of the school
- The need to provide affordable homes
- Safeguard land for allotment use
- Accommodation for the elderly
- High speed broadband connectivity
- Potential for a serviced business centre
- Improve village hall facilities
- Improve Grove Wood and develop a community wood
- Potential for a new purpose built surgery
- Relocate vicarage to new location
- Provision of additional burial space for the parish
- Improved sports facilities

Community workshop

Purpose of the workshop

The steering group considered it important to provide an opportunity for the local community to comment and give their views, concerns and establish their own aspirations for the village and how these hopes and issues can be met.

An open workshop was considered the most appropriate method of allowing all residents an opportunity to be involved. This was an important stage of the neighbourhood planning process to help keep the community fully informed of what is being proposed and to make their views known. It was hoped that the event would be an opportunity to share the initial aspirations developed by the steering group and provide an occasion for the local community to pass comment.

Workshop format

The workshop was an open public event held on Tuesday 17 July 2012 between the hours of 19:30 and 21:00 at Sherston Village Hall. Registration sign in sheets were provided to record attendees (see Appendix A). A display was produced giving an overview of neighbourhood planning (see following page(s)), a summary of the initial aspirations and an opportunity to provide comment on a number of themes including:

- Community and services
- Economy
- Environment
- Housing.

Sherston Neighbourhood Plan Workshop	
17 July 2012	
19:30	Registration <ul style="list-style-type: none"> • Opportunity for stakeholders to examine the display material and provide comment
19:45	Welcome / introduction <ul style="list-style-type: none"> • Welcome – Chairman Sherston Parish Council, Mr J Matthews • Workshop introduction – Wiltshire Council
20:00	Workshop <p><u>Mapping the present (Assets) – approx 25mins</u> Stakeholders to analyse the neighbourhood plan area. Consider and then diagram on a large scale map the following:</p> <ul style="list-style-type: none"> • <i>The key assets within the area / village</i> • <i>What links exist between the neighbourhood plan area and its wider context (economy, tourism, education, landscape, ecology, retail, community facilities, commuting patterns)</i> <p><u>Mapping the future (Opportunities) – approx 25mins</u> Stakeholders then consider and diagram the potential opportunities and ambitions within the area and the surrounding area, such as:</p> <ul style="list-style-type: none"> • <i>Retail</i> • <i>Community Facilities / Skills / Education</i> • <i>Employment / Business</i> • <i>Infrastructure improvements</i> • <i>Housing</i>
20:50	Feedback <ul style="list-style-type: none"> • Each group to feed back on the key issues arising from their discussions
21:00	Next steps / close <ul style="list-style-type: none"> • Next steps – Wiltshire Council • Closing statement - Chairman Sherston Parish Council, Mr J Matthews

Figure 2 - Workshop agenda

Workshop display boards

What is the Sherston Neighbourhood Plan?

Neighbourhood planning is a new way for communities to decide the future of the places where they live and work. The Sherston Neighbourhood Plan will cover the administrative area of Sherston Parish Council. The plan will potentially seek to allocate development sites, where appropriate, and establish any local policies that may be needed to complement those set out within Wiltshire Councils development plan.



Wiltshire Council has secured funding from Communities and Local Government for six pilot neighbourhood plans, known as 'Front Runners'. The Sherston Neighbourhood Plan is one of the Wiltshire front runner projects. Piloting a neighbourhood plan at a village scale will be very important to help inform the appropriate scale of neighbourhood planning and ensure the wider approach developed across Wiltshire is as effective and cost effective as possible.

The Sherston Neighbourhood Plan will be able to establish general planning policies for the development and use across the parish. The plan might specify, for example, where new homes and offices should be built, and what they should look like. The plan could also set a vision for the future, and can be detailed or general depending on what local people want.

Who is developing the Sherston Neighbourhood Plan?

The Sherston Neighbourhood Plan is being led by the parish council. A steering group has been established to include wider representation from the community to ensure that there is a balance of interests so that social, environmental and economic interests are represented. Members include:

- Sherston Parish Council
- Sherston schools
- Sherston businesses
- Sherston Churches
- Malmesbury Area Board
- Sherston Old School Community Interest Company (SOSCIC)
- Sherston housing
- Sherston Scouts and youth
- Tolsey Surgery
- Sherston Busy Hands Pre-School
- Sherston Green Wing
- Sherston Senior Club
- Sherston sports association
- Sherston allotments
- Sherston village hall



How can I get involved?

It is vitally important that everyone within the parish has an opportunity to provide comment on the neighbourhood plan throughout the process. This workshop is just one opportunity to comment and help inform the Sherston Neighbourhood Plan. Further events will be organised including engagement with the young and elderly. Upcoming events will be advertised through the parish newsletter. The agendas and minutes of the steering group are published on the parish website www.sherston.org.uk.

What are the next steps?

The steering group has started to engage with local community groups and organisations including the primary school, scouts, senior club and local businesses. The workshop this evening provides an opportunity for the local community to comment on these aspirations and gather further information. The steering group will then develop a list of objectives and a vision for the plan drawing upon the aspirations of the local community.

Sherston Neighbourhood Plan aspirations...

The steering group has engaged with a number of local community groups and organisations to establish a series of aspirations. The workshop this evening provides an opportunity for the local community to comment on these aspirations and gather further information.



What do you consider to be the most important aspiration? Please add a sticky dot below...

- | | |
|--|--|
| <ul style="list-style-type: none"> • Improvements to the scout hut <input type="text"/> • Potential re-location of the pre-school to purpose built premises <input type="text"/> • Solution to parking and travel issues <input type="text"/> • Potential expansion of the school <input type="text"/> • The need to provide affordable homes <input type="text"/> • Safeguard land for allotment use <input type="text"/> • Accommodation for the elderly <input type="text"/> | <ul style="list-style-type: none"> • High speed broadband connectivity <input type="text"/> • Potential for a serviced business centre <input type="text"/> • Improve village hall facilities <input type="text"/> • Improve Grove Wood and develop a community garden <input type="text"/> • Potential for a new purpose built surgery <input type="text"/> • Relocate vicarage to new location <input type="text"/> • Provision of additional burial space for the parish <input type="text"/> • Improved sports facilities <input type="text"/> |
|--|--|



 neighbourhood
planning

What do you cherish?

What would you change?



Aspirations to be investigated

- Potential to expand the primary school
- Pre-school
- Village hall



Aspirations to be investigated

- Affordable housing
- Care for the elderly

 neighbourhood
planning

What do you cherish?

What would you change?



Aspirations to be investigated

- High speed broadband
- Potential for a serviced business centre



Aspirations to be investigated

- Potential to develop a community garden

Workshop overview

An introduction was provided by John Matthews (Chair, Sherston Parish Council) which provided an overview of the purpose of the workshop. Wiltshire Council officers then provided an overview of the workshop exercises to be undertaken in groups. This part of the evening lasted for approximately 1 hour and was split into two parts.

Workshop 1 - Mapping the present (approx 30min)

Each group was provided with a large scale map of the neighbourhood plan area and considered and diagrammed the following:

1. The key assets within the area
2. What links exist between the neighbourhood plan area and its wider context (economy, tourism, education, landscape, ecology, retail, community facilities, commuting patterns)

Workshop 2 – Mapping the future (approx 30min)

Groups then considered and diagrammed the potential opportunities and ambitions within the area and the surrounding area, such as:

1. Retail
2. Community Facilities / Skills / Education
3. Employment / Business
4. Infrastructure improvements
5. Housing

Each table then elected a resident to feedback on the key issues arising from their discussions. John Matthews closed the workshop and thanked everyone for their attendance. Mr Matthews outlined that all of the information gathered would be collated and used to inform the emerging neighbourhood plan.

Evaluation forms were made available to gauge the success of the evening. A summary of the workshop findings and the evaluation forms are provided in the following section.

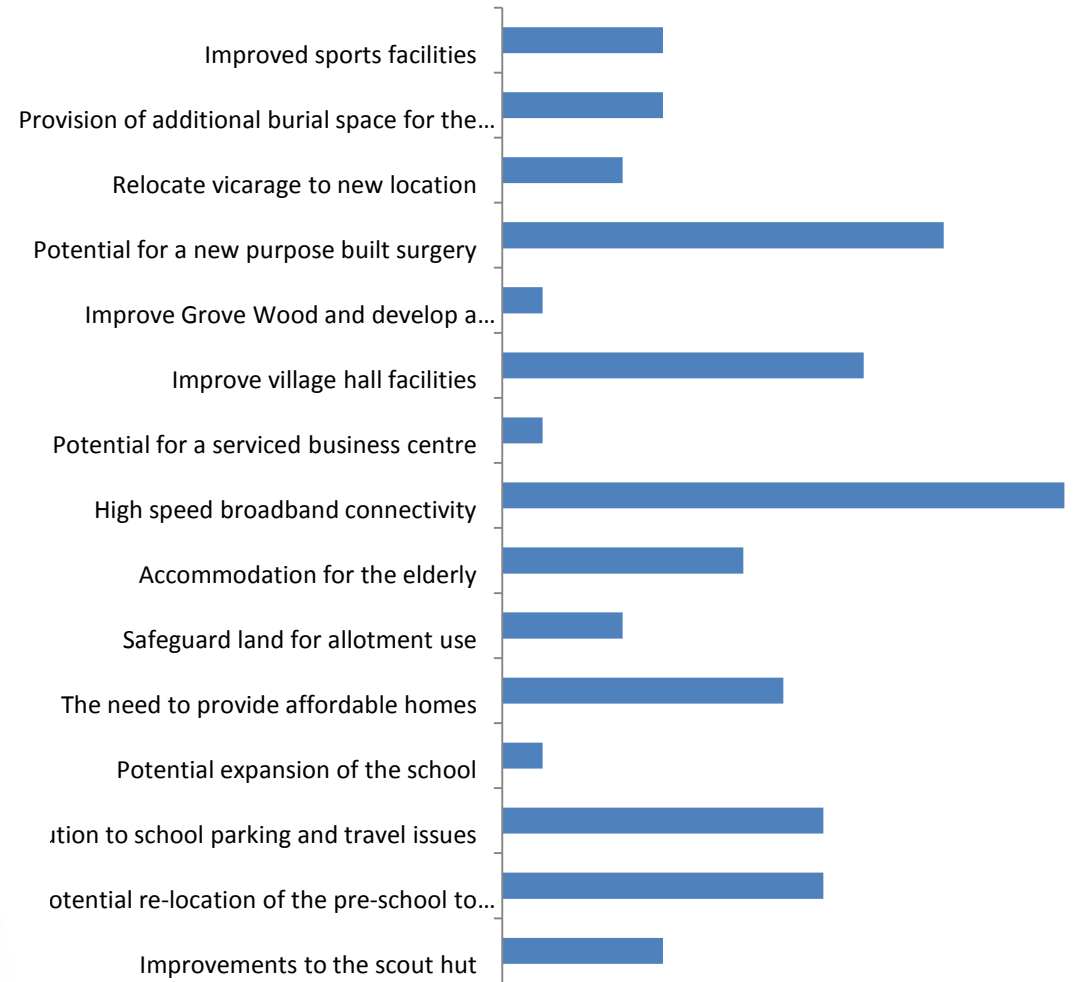
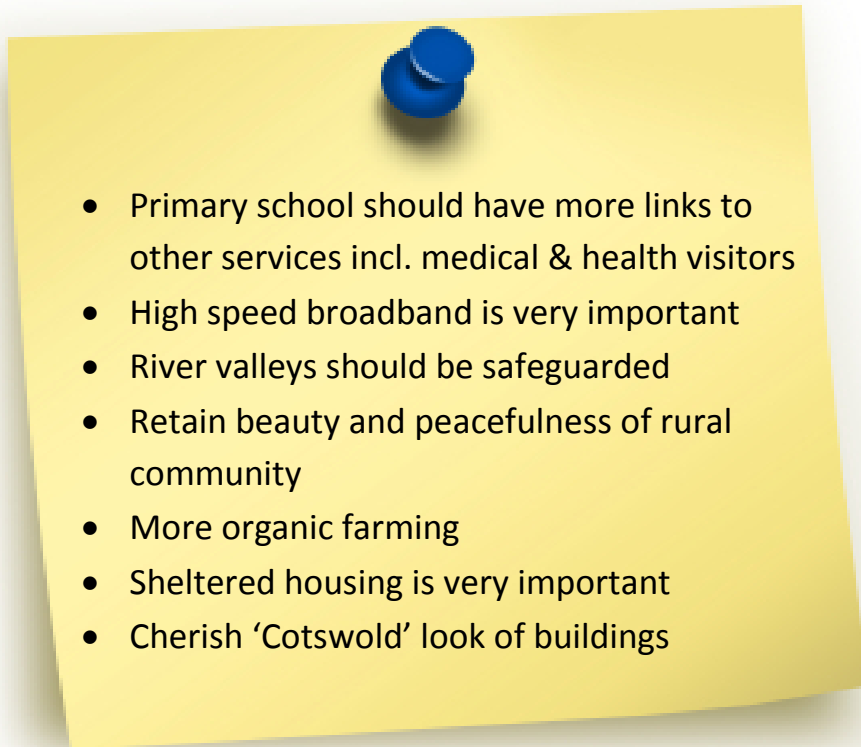


Workshop outputs

The following represents a summary of the workshop findings which will help inform the objectives for the Sherston Neighbourhood Plan.

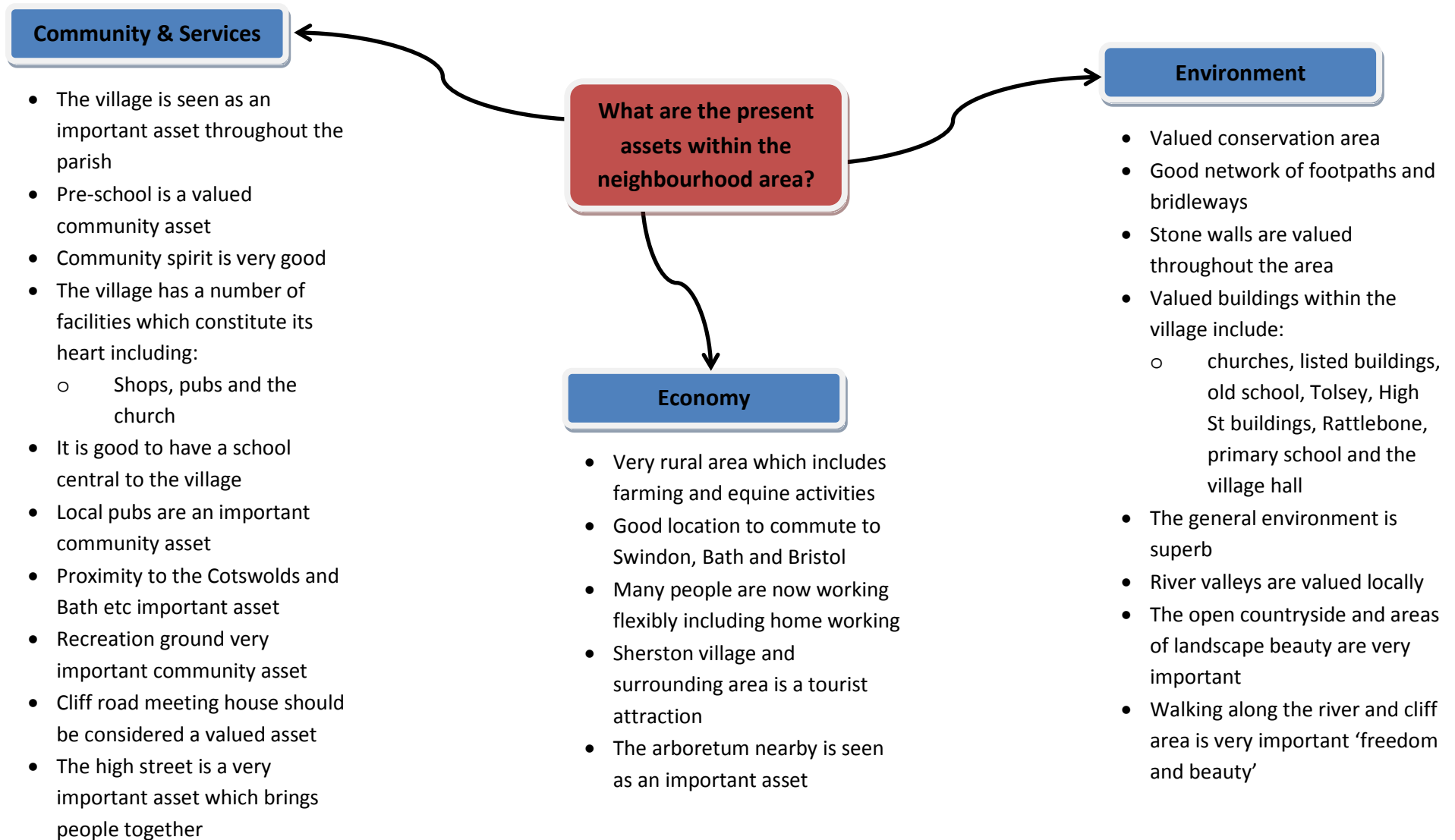
Display boards

At the start of the meeting attendees were invited to provide comment on a number of themes using post-it notes a summary of the comments are provided below:



The most important aspiration was considered to be high speed broadband connectivity. The potential for a new purpose built surgery, improved village hall facilities, solution to school parking and travel issues, potential re-location of the pre-school and affordable housing were also seen as important aspirations. Improvements to Grove Wood, potential expansion of the school and the potential to provide a serviced business centre were considered to be the least important.

Workshop 1 - Mapping the present



Workshop 2 - Mapping the future

Community & Services

- Important to encourage self financing buildings
- A mini bus going around the village
- Need to increase burial facilities
- Improve pedestrian access to the school to encourage more walking
- Are the buses adequate? Do we need to increase provision?
- Need to improve provision for the arts incl. exhibition space and performance facilities
- The old rectory is located in a central position this could be a key site if redeveloped
- The village hall should be larger to accommodate bigger events
- Sports pavilion – one large purpose built building, that incorporates village hall, scout hut and sports changing facilities etc
- Agree that there should be a new vicarage and expansion of burial facilities
- Develop car park in conjunction with developing village hall
- More youth facilities are needed
- Anthony Close – enhance it or new surgery site?
- Pre-school should relocate to be near the school
- New premises should be sought for busy hands
- The village has poor infrastructure including:
 - lack of mains drainage, no gas, poor mobile phone coverage, poor bus service, limited taxis and no police /ambulance
- Public transport provision should be improved
- If the GP surgery relocates what will be the future use of the site?
- Parking is an issue within the village
- Is the GP surgery big enough – what is the demand?
- Mains gas supply should be introduced to the village
- The relocation of the allotments should be considered – future use of land?
- Co-location of facilities can sometimes be beneficial
- Facilities and accommodation for the elderly is very important
- Not very much for young people to do in the village

What are the potential opportunities and ambitions for the area?

Housing

- More houses will be needed
- Difficult to expand housing easily due to topography
- New development has no parking this should be a consideration
- Not too much housing
- Shared equity model of housing should be encouraged
- It is very difficult for young people to access housing within the village
- We should encourage more affordable housing
- Provision of elderly housing should be seen as a priority

Environment

- Better access to Grove Wood should be explored
- A lower speed limit should be introduced along the high street
- Footpaths require protection
- The creation of a community garden should not be seen as a priority
- Most people want to safeguard allotments

Economy

- Better connectivity should be encouraged including fibre optics and satellite
- Explore community electricity generation incl. a micro-hydro scheme
- Home working is very limited due to slow broadband
- We should do more to support small businesses within the village
- We should encourage business growth by providing the correct facilities incl. post office etc
- High speed internet should be introduced throughout the village

Example material generated during the workshop

TRANSPORT.
 - SPEEDING. CONTROL
 BUSES
 TAXIS.
 - CAR SHARING.
 - LINK Transport -

ECONOMY
 - ENCOURAGE AND PROTECT
 - FARMING.
 - WOODLAND

HOUSING
 Social Housing
 ELDERLY.
 SHARED
 LIMITED NEW BUILD WITHIN BOUNDARIES.

COMMUNITY + MIXED.
 + SURGERY +!
 + DENTIST
 + VICARAGE DEVELOPMENT.
 + PRE SCHOOL
 + SPORTS. PITCHES.
 AND FACILITIES.
 + ADDITIONAL BURIAL AREA.

Housing
 More affordable housing / More rental for private people / young families!
 Want young people to stay.
 Accom for elderly people - bungalows
 Where? - behind the school
 - not areas.
 Not large scale.
 Have to go in need.

20 mph speed limit

New graveyard.
 Vicarage →
 Could 2 sites for disused?

11 MILES. COMMUNITY SENSITIVE.

WE USE THE ALIQUOTS IN A CENTRAL LOCATION - COMMUNITY SENSITIVE - ALL.

SCHOOL - CENTRAL LOCATION

HEAD OF THE VALLEY

OUTSTANDING NATURAL BEAUTY

QUALITY OF URBAN ENVIRONMENT - HIGH - RESPECT.

ACCESSIBLE NATURAL ENVIRONMENT FOR ALL.

LOW LEVEL TRAFFIC IS A VERY KEY FEATURE - WE WANT TO REMAIN.

ALL BARS AND RESTAURANTS & THE VIEWS ARE ALL GOOD.

ROADS TO AND OUT ARE ALL HAVE FABULOUS VIEWS & VIEWS.

AS A SELF-DRIVER IS A GREAT ATTRACTOR

11 MILES TO CITY

Commuting
 we travel v far for work - South / Bath / Bristol
 But biggest one is 6 miles in
 12 miles for 2nd school

Elusive factory

To M4 + Bristol / Bath etc for work.

Workshop feedback

At the end of the workshop each group nominated a resident to provide feedback:

- Community spirit is fantastic within the village
- The area has a very high quality environment
- Infrastructure for cars should be improved incl. parking
- The whole village should be safeguarded – however, new households need to be accommodated
- More youth facilities are needed
- The sports field is currently underutilised
- The specific location of the village adds to its character
- The river area has specific recreation value
- Broadband speeds should be improved
- Any future development proposals should be debated
- The scale and type of development will be very important
- New development should be linked to the needs of the community
- The village wants to move forward but this should be balanced with the need to conserve what is valued
- High house prices restrict the ability of people to stay in the village
- Important not to spoil what we already value
- The plan should manage new development
- No fundamental changes should be made to the village or the rate of development
- Options should be explored to expand the surgery
- Options for the vicarage site should be explored
- The river corridor should be protected and enhanced
- The village already has a considerable amount of services and facilities
- The potential relocation of the pre-school should be considered

Next steps

The workshop outputs documented in this report will help inform the objectives to be produced for the Sherston Neighbourhood Plan. Further consultation will also take place with the community as the neighbourhood plan develops.



Appendix A – Workshop attendees

Name	Address	Email	Representing i.e. local resident, business or community organisation	Would you like to be kept informed about future events?
Mr J Smith	The House, Sherston, SN11 111	jsmith@email.co.uk	Local resident	✓
Ian Ashby	30 STRONGS CLOSE SN160NU	IANASHBY@MSN.COM	LOCAL RESIDENT	✓
Andrew Thomsen	40 38 The Tarkers	andrew@thomsenplanning.co.uk	PAST/FUTURE RESIDENT	✓
Mike Johnson	38 The Tarkers	mike38tk@tiscali.co.uk	Resident + farmer	✓
Terry & Brenda Moulder	Gaston Lane	t.moulder@btinternet.com	LOCAL/BUSINESS	✓
Graham Lister	27 The Tarkers	giaslre@btinternet.com	" "	✓
FIONA SHIPSEY	HOME FARM EASTON TOWN	jfshipsey@btinternet.com	RESIDENT	✓
Tony Wood	Sandpit Lane	ja.tonywood@virgin.net	"	✓
Michael Carter	Ashton Keynes.	mcarter@akpc.org.uk	Ashton Keynes.	✓
Mike Jackson	"	mike@mikejackson.eu	" PC	✓
J Burgess	12 GASTON LANE		Resident	
Pat Jones	Silk Mill Cottage, Brook Hill	warwick.jones@btinternet.com	Local Resident	✓
Warrick Jones	"	"	local Resident	✓
Chris Hillier John	Lower Lant, Sherston	-	"	

Name	Address	Email	Representing i.e. local resident, business or community organisation	Would you like to be kept informed about future events?
Mr J Smith	The House, Sherston, SN11 111	jsmith@email.co.uk	Local resident	✓
Dr P. P. PETT	Tasey Surges Sherston		Tasey	
MR PAT STARKE	THE COTTAGE PINKNEY	pat@designactivity.co.uk.	resident.	✓
Mrs Annie Hewell Palmer	Tally House Sherston	annielpalmer@gmail.com	Busy Hands Pre School	✓
GRACE STRACHAN	28 STONES CLOSE	gracestrachan@msc.com.	resident.	✓
Kennica Sheffington	Willow Trees Nurseries	all.sheffington@virgin.net	resident.	✓
PHILIP ANDREWS	8 WOODS CLOSE	philip.andrews@btinternet.com	resident	✓
Jo Curson	Greenswee Gap	jo.curson@greenswee.co.uk	Hawthorn Association	—
Sean Magee	Byan Home Willesley	spbmagee@gmail.com.	Willesley	✓
Carole Conyngham	The Vineyard Sherston	caroleconyngham@guilford.gov.uk	the vineyard	✓
Trevor Moody	Upper Stanbridge Farm	trvrmdy@aol.com	Resident	✓

Name	Address	Email	Representing i.e. local resident, business or community organisation	Would you like to be kept informed about future events?
Mr J Smith	The House, Sherston, SN11 111	jsmith@email.co.uk	Local resident	✓
Mr J Smith	15 Tumpson Hill, Sherston	nev.borne@btinternet.com	-	
Frank & Elizabeth Hatt	Lind Cottage Cliff Road - SN16 0LN	frankhatt@gmail.com	11	✓
Kevin Blunton	BYBROOK BOSWERS HILL SN16 0ND	kevin@cumpton.com		✓
Beryl Blunton	- " -	- " -		✓
Nigel Freeth & Helen Freeth	Vancelettes Farm, Tetbury Rd SN16 0LS	vancelettesfarm@aol.com	Sherston church	✓
X Tony and Maureen Jolliffe	Mount Pleasant SN16 0ND Brook Hill Sherston	mtjolliffe@btopenworld.com	Local Resident & Parish Committee	✓
Graham Moore	14 Sandpits Lane	grahamsherston@btinternet.com	SPC	✓
Chris J. Brant	20 Garden Lane	cjbrant@gmail.com		✓
Christopher Bryn	The Rectory, 1 Rectory Ave, Seaman St Quaxin, SN11 6DT	christopher.bryn@btinternet.com	Sherston church	✓
Gail & Graham Hayman	26 Silver Street SN16 0LW	grahamandgail@btinternet.com	Local residents	✓
Jill Barker	7, High Street SN16 0LH			
Jill Cairney	3 Noble St. SN16 0NA	jill.cairney@gmail.com	Local resident	✓
Anthony Price	Barton House, Swa-Barton		Scot Camp	

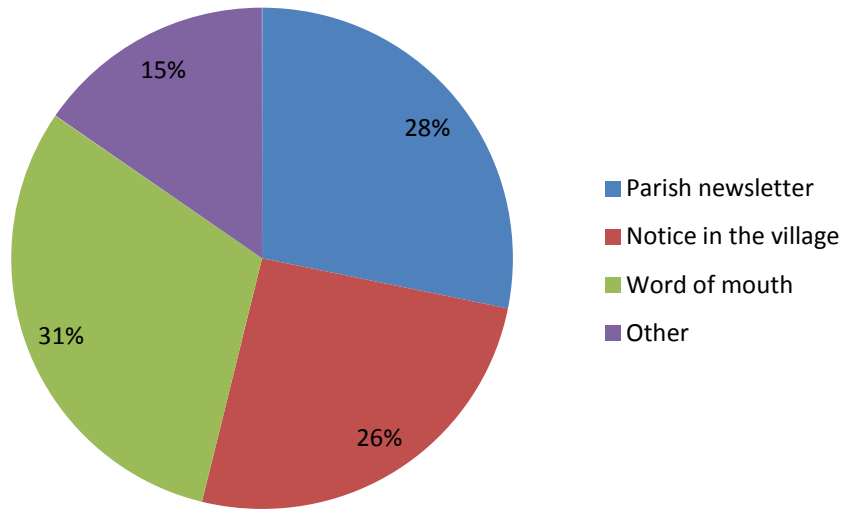
Name	Address	Email	Representing i.e. local resident, business or community organisation	Would you like to be kept informed about future events?
Mr J Smith	The House, Sherston, SN11 111	jsmith@email.co.uk	Local resident	✓
P. Veincy	7 High Street,		"	✓
Jana Lewis	Anne Brynos College Wellesley	jlanalewis@gmail.com		
Fred Lewis	"		"	
John Kiriaki	29 Hat St.		Allotment holders	✓
Tony Weedon	7 Strong Close		SPC	

Name	Address	Email	Representing i.e. local resident, business or community organisation	Would you like to be kept informed about future events?
Mr J Smith	The House, Sherston, SN11 111	jsmith@email.co.uk	Local resident	✓
John Hillier	Lower Farm			
JAMES KITCHEN	27 STRONGS CLOSE	JK@MFOH.CO.UK	RESIDENT	✓
MARTIN SMITH	HAEFEN, 3 SANDPITS LANE	martin@haefen.co.uk	,,	✓

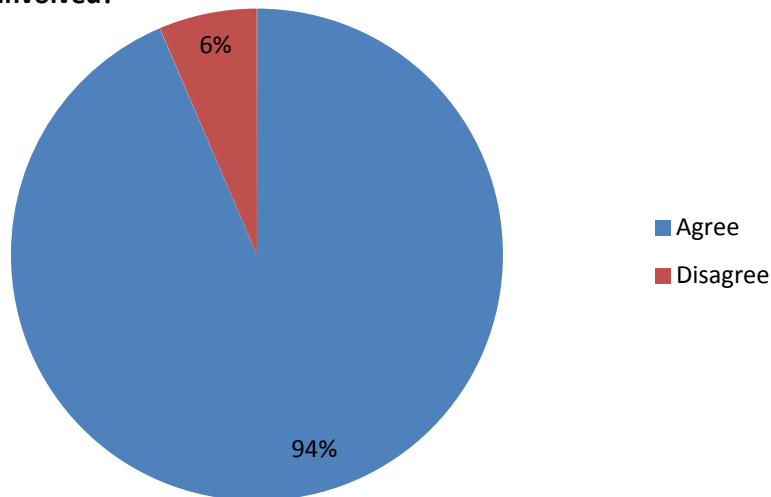
Appendix B - Workshop evaluation

The following summarises the feedback received at the event.

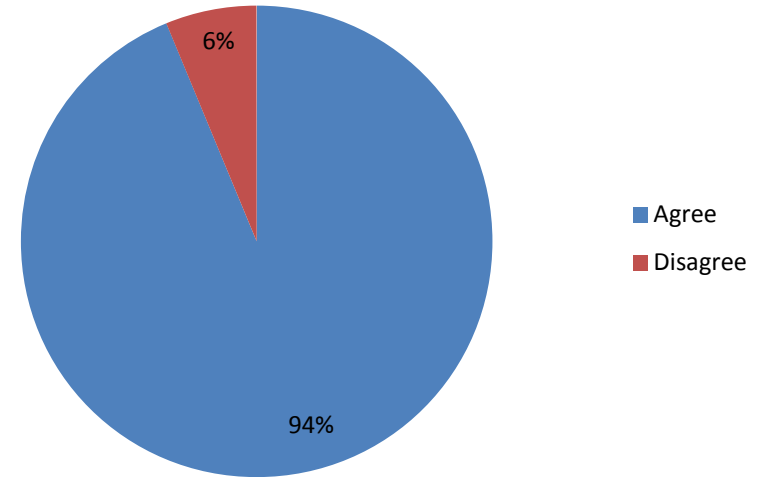
Please indicate how you found out about the workshop this evening.



I now have a better understanding of the next steps and how I can continue to be involved?



The workshop has provided me with a better understanding of the Sherston Neighbourhood Plan?



The workshop has provided an opportunity for me to comment on the emerging neighbourhood plan aspirations?

