



# THE SHERSTON CLIFFHANGER



Q U I N G E N T E N S I M U M  
PUBLISHED BY SHERSTON PARISH COUNCIL

JANUARY 2011

A N N I V E R S A R I O I G N I S  
DELIVERED FREE

*A happy and prosperous new year to all our readers, advertisers, contributors and distributors. In fact, everyone!*

## The minus 8c gang



Photo l-r John Lloyd, Sue McKechnie, Chris Edgecombe and Geoff Carrs. Photo by Martin Rea

There's no stopping the Grove Wood volunteers. Despite temperatures falling to minus 8c, five hardy souls beat the elements on Sunday 19 December and 'copped on' despite the weather. A roaring fire and Sue's famous hot soup were essentials though. If you fancy some hearty exercise why not join them on Sunday 2 January from 10 am till 1pm? All welcome.

## £3000 Christmas cheer

Senior citizens in Sherston and Easton Grey received their Christmas vouchers totalling £3000 from Sherston 1016 on time despite the appalling weather just before the festivities began. Some 200 vouchers were delivered all to be spent locally in either Sherston Post Office Stores or Tucks Farm Shop.

After a very successful year of fundraising the voucher value has been increased from the usual £10 to £15. 'People have been very generous at all our events in 2010' said 1016 member Eric Thacker 'and this enabled us to make such a big rise this time.'

The vouchers are made available to any household in Sherston or Easton Grey parishes where a person who is 65 or over resides. Widows and widowers who are under 65 are also covered. Anyone who may be eligible but has not yet had a voucher should contact Eric on 841344. All vouchers must be cashed by 31 January.

## Walk off the mince pies!

Don't forget to lose those festive season pounds with a New Year walk led by Sue McKechnie on Sunday 2 January starting from the village hall at 11.00am. Return to the Rattlebone Inn just around 1.00pm in time for a complimentary snack - Rob Strong promises it won't be mince pies. As ever children and well behaved dogs on leads are very welcome as well as any guests you may have who may be starting to turn a little cabin crazy. Best of all it's absolutely free!

## Busy Hands Pre School Quiz Night

It looks like this year's Busy Hands Pre School Quiz is going to be the best yet. Apart from the fiercely contested quiz itself, once again there will be a fantastic raffle and auction on the night. This year's prizes include an overnight stay for two at The Old Bell in Malmesbury, a Calcot Manor Twilight Spa for two, a Nokia N8 Phone, a Whatley Manor Spa Evening and chef for the evening to cook you dinner, £100 Anna Lizzio Voucher, a car pass and entrance for two to Badminton and a three course dinner for two at The Rattlebone among many others. The doors open at 7.30pm and the quiz starts at 8pm in the Village Hall on Saturday 15 January 2010.

## Cribbs trips

The Christmas shopping trip to Cribbs Causeway using the Cartmell Community Minibus on 4 December proved a great success with almost a full bus load enjoying a stress free journey. Unfortunately the second trip due on 18 December fell foul of the weather conditions and had to be cancelled. Being stranded in the snow for the night just wasn't an option! Thanks are due to volunteer drivers Eric Thacker and Tony Weedon. It is hoped to organise more trips in the spring.

## Next meeting

The parish council meets on Thursday 13 January in the village hall at 7.30pm. All are welcome to attend and there are opportunities to raise questions and pass comments. If you cannot make the meeting but have something to raise please contact the clerk Mrs. Sarah Wood on 840351 or email [clerk@sherston.org.uk](mailto:clerk@sherston.org.uk). You can also contact the council via the response form on [www.sherston.org.uk](http://www.sherston.org.uk) where minutes of meetings can be read.

## Don't forget

The table top sale in the village hall takes place on Saturday 29 January from 9am to 12 noon. As well as the sale there will be a raffle and tombola together with refreshments. Free entry.

To book a table for only £5 in advance (£7 on the day) contact Lin Prior on 840846 or Sheila James on 840285. All proceeds to village hall funds.

**Copy deadline: 10<sup>th</sup> of the previous month.**  
Send to [editorial@sherstoncliffhanger.co.uk](mailto:editorial@sherstoncliffhanger.co.uk)  
or hard copy to Sherston Post Office Stores.

**What's On: contact Caroline Moore on 841405 or [info@sherstoncliffhanger.co.uk](mailto:info@sherstoncliffhanger.co.uk)**

The size and content of the Cliffhanger depends entirely on the amount of copy we receive from individuals and groups. So, if you feel you have something of interest, please don't hesitate to tell us. Around 400 words would be a maximum but the shorter the better and less editing would be needed.

**Top tip:** if you're telling us of an event coming up, write a short piece about it rather than just supply basic details or a poster. You will then get a short article published to help boost interest as well as a mention in our What's On section. Don't forget to tell us how your event went, with a photo if possible.

**To advertise, contact :**

[advertising@sherstoncliffhanger.co.uk](mailto:advertising@sherstoncliffhanger.co.uk)  
John Mackison 841197 Beryl Clampton 841201

Advertising rates:

for 12 months:

1/4 page £200; 1/8 page £100; and 1/16 page £50

for one month:

1/4 page £80; 1/8 page £40; and 1/16 page £20

Inserted leaflet drop £75

Please remember the Cliffhanger is delivered free to every home and business in the parish – more than 950 copies. This and all previous editions are also available online at [www.sherston.org.uk](http://www.sherston.org.uk)

PRINTED BY THE COMPLETE PRODUCT COMPANY, PINKNEY

## Top tips for recycling Christmas

There are lots of unexpected Christmas items you can recycle in your black box, like chocolate tins and mince meat jars.

Wrapping paper and Christmas cards that are not shiny can be recycled in the cardboard bins at Wiltshire's household recycling centres.

You can put extra recycling out next to your black box if it's separated, or if you would like a second black recycling box you can order one online at [www.wiltshire.gov.uk/waste](http://www.wiltshire.gov.uk/waste) or by calling 0300 4560102

Much of the waste left over after Christmas can be recycled at our nearest Household Recycling Centre (HRC) – Stanton St Quintin. You can even recycle your old electrical items and batteries.

You can recycle your old real Christmas trees at any of Wiltshire's Household Recycling Centres: [www.wiltshire.gov.uk/waste](http://www.wiltshire.gov.uk/waste) or call 0300 4560102

For more information about what can be recycled in Wiltshire this Christmas go to [www.recycleforwiltshire.com](http://www.recycleforwiltshire.com)

## Clem's Club

Will meet every other Tuesday again. All friendly fellas welcome or simply chat and chat. 2.30 – 4.0 pm (Alternating with the senior club) in the British Schoolroom, Cliff Road, Sherston, Jan 18, Feb 1 & 15.

## New waste collection and recycling service

On 19 October 2010, Wiltshire Council's cabinet members approved a proposal to move to the same waste and recycling collection service for everyone in Wiltshire.

This will mean changes to waste and recycling collections for all residents of Wiltshire and will improve recycling services. For this area in particular this will mean that normal household waste will be collected fortnightly instead of weekly as at present.

More information about the new services will be coming soon.

During the summer of 2010, over 10,000 residents in Wiltshire had their say about the proposed changes to waste and recycling services. 72% of people said 'yes', they supported the proposed changes. Results of the waste consultation are available at [www.wiltshire.gov.uk/waste](http://www.wiltshire.gov.uk/waste)

**We invite you to**  
**SHERSTON COMMUNITY CHURCH**  
(Congregational)  
CLIFF ROAD

On any of the following Sundays at 11.00am

**January 2nd** - Service including,  
"in remembrance of Him",  
the taking of bread and wine.

**January 9th** - Service led by Robert Wood  
of Downend, Bristol.

**January 16th** - Service led by Jonathan  
Brain of "Operation Mobilisation"

**January 23rd** - Service taken by  
members.

**January 30th** - Praise Service  
(Informal, occasional, attendance accepted and  
understood.)

Coffee and conversation 12.0 – 12.30pm

# Jumble Sale

Sherston Ladies Swimming Club will hold a Jumble Sale on Saturday 5 February in Sherston Village Hall starting at 10am. There will also be a cake stall.

Clear out your clutter and prepare for the spring. Please give items to a member of the Club or phone any of the numbers below.

Come along and find some bargains, the best recycling ever.

Annabel 840592, Maggie 840969, Heather 840375.

# Boules & Carnival 2011- a wee invite

The essential preparation work for this year's programme is already underway but as always new ideas and most importantly volunteers are needed. If you have an idea or want to find out about how to get involved why not come along to the Rattlebone Inn on Tuesday 25 January at 8pm? All the committee will be there and all those who have helped in any way in the past are also warmly invited. It's an ideal opportunity for everyone to meet up, relax and mull over the coming year.

If you're new to Sherston being part of Boules & Carnival is a great way to quickly get to know lots of people. There are some events which do need extra hands to man them this year so you could get teamed up with others new to the game – a sort of volunteer blind date!

It's also Burns Night on the 25 January so there may just be a wee haggis tasting to tempt you along.

# Area Board

The next meeting of the Malmesbury Area Board of Wiltshire Council takes place at Malmesbury Town Hall on Wednesday 19 January 6.30pm for 7.00pm start. All welcome.

## Shear Class & Serenity

Uni-Sex Hair Salon and Beauty Salon  
Sherston 01666 840840

**TIGI**

• Top To Toe Team •

**O·P·I**

**\* New Year Special Offer -**  
**10% off in January with this voucher**

**\* PIGI and Biolage products available**

**\* FM perfumes and Testers**  
**now available.**

RASOON

bareMinerals

MATRIX

CALIFORNATAN

# SHOCC (Sherston Occasional Community Choir)

The Christmas Big Sing took place in two venues this year on Sunday 12 December with both the Junior Choir and members of SHOCC sharing the programme under the direction of Mary Clements. It was good to see Nicki Heenan at the morning service in the Congregational Church having recovered from recent surgery.

The Junior Choir was in good voice and Christmas spirit and performed their songs with gusto. They led the prayers with a specially composed poem about Christmas, written by Katherine Moyse, who unfortunately was not able to be there to read it herself.

SHOCC members, ably accompanied by Maggie Instrell on keyboard and Harry Smith on sax and violin, sang pieces by John Rutter, Leonard Cohen and Sager and Foster as well as joining in with the Junior Choir in a couple of their songs.

The congregation enjoyed singing well-known carols and after the evening performance in Holy Cross Church refreshments were served.

SHOCC will meet again in March 2011 - watch the Cliffhanger for details.

## T H WHITE

**In more fields than you imagine**

Gardening Equipment, Country Clothing,  
Safety Footwear, Animal Feeds,  
Household Cleaning Products, Britains Toys  
Tools and Ironmongery.

**Snow Sledges**  
Model may vary  
from picture  
shown

**De-Icer, Screen Wash  
& Anti-freeze**

**Cluson  
Rechargeable  
Torches**

**Eveready  
Batteries &  
Torches**

Open to Trade and General Public

Monday to Friday 8.00 am to 5.30pm  
Saturday 8.00 am to 12.00 Noon

Sherston Works, Knockdown,  
Nr Tetbury, Glos. GL8 8QY  
On the A433 Between Tetbury and  
Didmarton

**15% DISCOUNT VOUCHER**  
**On stocked shop goods on  
presentation of this  
Voucher**  
**Valid from 1/1/11 - 31/1/11**

Tel: 01454 238181 Fax: 01454 238772  
www.thwhite.co.uk



# Cotswold Conservation Board courses

## Hedge laying

Two weekend courses in Hedgelaying for beginners are taking place on 22 & 23 January and 5 & 6 February at the Fosse Cross, Northleach.

On the course, participants will learn hedgelaying in the Midland style including how to clear/prepare the hedge, cut and lay the pleachers, fix the stakes and bindings, correctly use and maintain hedge laying tools.

An additional hedge laying course has been arranged to take place at Castle Combe on 12/13 February 2011. This course will be taught in the Somerset style.

All hedge laying courses cost £80 for the full weekend. For further details, contact David Molloy on 01451 862002 or email: david.molloy@cotswoldsaonb.org.uk

## New woodland coppicing

The first new woodland coppicing course was organised by the Board on 14 November at the National Trust's Littleworth Woods, Snowhill, near Broadway. The course attracted five participants from around the region who enjoyed both the wonderful woodland venue and the opportunity to learn new skills. A second course is being organised at Littleworth Woods on 16 January. It is hoped that these will become a regular feature of the Board's rural skills programme in the future.



Woodland coppicing helps to encourage the re-growth of trees and shrubs and prolongs their lives. This ancient practice, dating back to Neolithic times, was originally used to source timber for the production of items such as gate and wattle hurdles, wooden tools, furniture and charcoal.

On the course, participants will learn:

- The skills of coppicing and tree felling
- What tools are needed and how to use them
- How coppicing can benefit wildlife
- A brief history of woodland coppicing
- How to identify and extract a range of coppice products and the potential uses for harvested coppice.

All coppicing courses are £35. For further details, contact David Molloy on 01451 862002 or email: david.molloy@cotswoldsaonb.org.uk

## Flying Start Nursery at Grittleton House School

An Independent Nursery & Pre School for ages 2-5



- \* Happy children
- \* Dedicated & caring staff
- \* Stimulating learning environment
- \* Fun activities & crafts
- \* Outdoor play area
- \* Woodland walks

Come & see us in action & give your child  
a 'Flying Start'

swimming ~ PE ~ trips ~ wellie walks ~ cooking ~  
ballet and lots lots more

Flying Start Nursery at Grittleton House School,  
Grittleton, Chippenham, Wiltshire. SN14 6AP  
Tel: 01249 782434 [www.grittletonhouseschool.org](http://www.grittletonhouseschool.org)

## DREAMSCAPE plastering

Friendly - Local - Independent

- Ceilings and walls
- Skimming over Artex
- Patching and repairs
- Rendering
- Wall and floor tiling
- Dry lining

For a tidy, professional and reliable service  
call Tony

M: 07815 932197

H: 01666 837580

Fully insured - Free estimates

# Village hall 200+ club

## November draw

1st	£11	5	Mrs Tuck
2nd	£10	263	J Latimer
3rd	£9	37	D Bremner
4th	£8	82	H Quirk
5th	£7	266	C Robinson
6th	£6	170	L Jones
7th	£5	251	M McKenna

Collectors: G Mason, M Goulding, J Gleed, M Thacker, J Platts, M Yeend.

## 200+ club - join for 2011

The club is a vital part of fundraising for the hall and makes a valuable annual contribution towards basic running costs which are now considerably more than £12,000. Subscriptions for 2011 will be due at the end of January and we hope current members will wish to renew. Your support over the years has been invaluable. If you're not already a member, why not join in 2011? It only costs 50p a month and 50 per cent of the proceeds are returned in prize money. You should find an application form with this edition of The Cliffhanger to encourage you.

Special thanks to the 200+ club organisers: Gwen Mason, Mary Goulding, Joyce Gleed, Janet Platts Margaret Thacker and Margaret Yeend

## Community safety forum - reminder

The next MVCAP (Malmesbury and Villages Community Area Partnership) quarterly community safety forum will be held at Malmesbury Town Hall on Thursday 6 January at 7.00 pm for 7.30pm. All are welcome and refreshments will be available.

One item which will be discussed is safety for young people. It is a fact that the young are more often the victims of crime, especially theft and assault, than other age groups. Ideas for tackling this issue on a number of fronts will be considered.

For further information please visit [www.mvcap.org.uk](http://www.mvcap.org.uk)

# Cotswold off-road cycling

A complete set of six new off-road cycling routes are now available to download from the Cotswold Conservation Board's website - [www.cotswoldsconb.org.uk/cycling](http://www.cotswoldsconb.org.uk/cycling)



Covering different parts of the Cotswold AONB and using existing public rights of way, the routes take in some of the best views, landscapes, villages and places of interest. As a way of helping to promote the routes and to encourage more people to explore the Cotswolds by bike, they were also featured in Cotswold Life magazine between June and November this year.

An additional feature planned for next year to help describe and interpret the area covered by the routes, is the development of a series of 'Insights' which are planned to accompany each route map.

If you're into cycling why not try a route or two? Route 6 Hawkesbury Westonbirt, which is 18 miles long, actually passes through the north of the parish from Knockdown to Sopworth.

## H·M·H

FAMILY BUILDING CONTRACTORS  
MALMESBURY

- Extensions
- New Builds
- Listed Buildings

- Refurbishment
- Hard landscaping
- Home Improvements

**Quality, Customer Service and a Price Promise not to be beaten.**  
 Tel: 01666841412  
 E-mail: [info@hmbbs.co.uk](mailto:info@hmbbs.co.uk)  
 Web: [www.hmbbs.co.uk](http://www.hmbbs.co.uk)

**PYKE BOARDING KENNELS AND GATTERY**

Contact: Kitty  
01666 840386  
Angela Stanley  
07748 971465

[www.pykeboardingkennels.co.uk](http://www.pykeboardingkennels.co.uk)  
[angela@pykeboardingkennels.co.uk](mailto:angela@pykeboardingkennels.co.uk)

**Green Fields**

Dog Walking and Minding Service

Reliable and responsible dog walker/minder recommended and used by Pyke Boarding Kennels Ltd of Sherston.

Covering Malmesbury and the surrounding villages minding/walking dogs and caring for cats or any small animal.

contact  
 Rachel Stanley on  
 07867 883594 01666 822792  
[www.greenfieldsdogwalking.co.uk](http://www.greenfieldsdogwalking.co.uk)  
[Rachel@markstanley6.ukfsn.org](mailto:Rachel@markstanley6.ukfsn.org)

## SHERSTON DRIVING SCHOOL

Michael Holborow A.D.I.

Tel: 01666 840327

Mobile: 07790890978

[Mike@sherstondriving.co.uk](mailto:Mike@sherstondriving.co.uk)

**Sherston 'Busy Hands'**  
Pre-School

**9.15-11.45 everyday  
in the Village Hall  
Age 3-5 years**

Well-qualified enthusiastic staff

Fun, multi-sensory educational environment

Wide range of equipment and toys including I.C.T.

**Come along for a taster session!**

For further information please contact Minnie on **01666 841118**

Registered charity no. 296903

# Walk on

The Sherston Footpaths Group is considering two new walks projects for 2011.

Firstly an approach has been made from some residents at Norton to publicise a walk from Sherston to Norton to perhaps include stopping off at the hostelrys at either end. It may also be broadened out to become a circular walk through Foxley and Easton Grey.

Steve Cox, the deputy mayor of Malmesbury has also been in touch regarding another new walk this time from Luckington to Malmesbury along existing Rights of Way. This was in fact an idea Sherston originally proposed as part of the Millennium celebrations but was not taken forward at the time due to insufficient interest. Walking has of course now become much more popular in recent years. Sherston's then parish clerk Tony Wood bravely walked a possible route in 1999 although much work was needed to improve it - which may still be the case.

If you are interested in helping out with either of these two projects please come along to the group's next meeting on Wednesday 26 January at 7.30pm in the village hall.

Last month we touched on the Kissing Gate scheme whereby you can sponsor a gate as a reminder of a special event or memory - an engagement, wedding, birth, anniversary or memorial for a loved one. We now have some likely figures to hand which are in the region of £200 for materials for either a wooden or metal gate and includes a suitable inscription. The actual installation of the gates will be done voluntarily by the group. If you are interested in the sponsorship scheme please contact Maggie McKenna via email [maggie.mckenna@harriespartnership.com](mailto:maggie.mckenna@harriespartnership.com) or on 841047.

Ideas as to suitable locations for the gates are also welcome.

## Personal Training Systems

Is pleased to announce the opening of an exclusive brand new 1 to 1 Personal Training and Power Plate studio, located in beautiful surroundings at Pinkney Park - opening early 2011.

For more information on personal training, packages, or to book a complimentary Power Plate session, please call Ruth King on 07734 886275, or visit [www.pts4u.org.uk](http://www.pts4u.org.uk)

**Be yourself only better!**

# Sherston WI

Members of Sherston W.I. met in the Village Hall on a very cold December night. Our speaker was Ceri Cryer who had come to tell us all about cheese making on their Hill End Farm. This had been started in 1910 using milk from her father's prize winning Pedigree Friesian Herd. She described the different methods used for the various cheeses. They also sell cream and butter on the farm. We were able to sample the cheeses which were much enjoyed and also make purchases. Ceri had won a 'Best New Business' award and also featured on the Country File programme. An added bonus to Ceri's visit was that she brought her 11 month old daughter with her, much to the delight of members. Our youngest visitor by far.

Christmas gifts for Athelstan House had been collected and would be delivered before Christmas.

Several members would be attending the Athelstan Group's last Carol Service to be held at Minety on 6 December.

Our January meeting would be a lunch at The Rattlebone on 13 January.

A course on making mosaics will take place in the Village Hall on January 17, 24 and 31. 1.30pm—4.30pm. Cost £8 for members and £12 for non members. Contact a member of the committee if you are interested.

The evening finished with an American Supper accompanied by seasonal music. An enjoyable end to a good evening.

## Grays of Sherston

Sherston's MOT Centre



**MOT's servicing and repairs**  
**Honest advice you can trust**

Now selling  
and fitting tyres on site.  
Call now for a advice or  
to book an appointment.



**Courtesy car available**

**01666 840728**

*Local Quality Car Care*



# TREEtalk

JANUARY 2011 by Sue McKechnie

## Grove Wood

We have now started on the coppicing and clearing of the Riverside (middle) section of the wood under the able direction of John Lloyd, the arborist. The volunteers have been supplemented by the Community Payback team, which is helping with the clearing and burning as the frozen ground has made it impossible to make a start on improving the riverside Macmillan Way and Cliff paths. We hope to continue on Sunday mornings in January from 10.00am. All volunteers very welcome, even if you can only stay for an hour. Soup provided. We finish at 1.00pm.

By February we should be looking forward to planting out the bulbs that we have potted up. Perhaps a group of volunteers unable to make Sundays would be interested in doing this on weekdays. More news on this later.

## National Tree Planting Week

27 November to 6 December was National Tree Planting Week but due to the frozen ground Sherston School children were unable to plant out their trees along the edge of the Recreation Ground. Let's hope they can manage it next term.

## Recycle your Christmas Tree

Take it to the Household Recycling Centre or Westonbirt Arboretum where it will go into a chipper to make mulch and thus be recycled back into the earth.

More information from Sherston's Deputy Tree Warden, Sue McKechnie, on 840601 or [suemckechnie@hotmail.com](mailto:suemckechnie@hotmail.com)

## Small Ads

*You can now advertise items for sale or wanted in the Cliffhanger including services required such as gardening or cleaning. Cost is £2 for up to 20 words. Copy should be in paper form and put through the letterbox at 37 High Street by the 15th of the month together with £2 in cash. All monies raised will be donated to charity. Private advertisers only please – no businesses.*

Professional couple with one child seek 2/3 bed house to rent in Sherston.

Long term and outdoor space preferred.

Excellent refs. Can move asap.

Please contact Nicola 07827 294329



Allington Bar Farm,  
Chippenham, SN14 6LJ  
Tel: 01249 658112

Open 7 days 9am – 6pm  
Mon – Sat  
& 10am – 5pm on Sundays.

### Quality Local Produce

**Home produced Pork, Lamb, Beef & Goat**  
Home Made Sausages & Burgers  
Local Free Range Poultry  
**All available daily from our Butchery**

**Locally made Preserves, Chutneys & Pickles**

Somerset Jersey Organic Milk & Cream  
**Local Cheeses & Home Cooked Meats**

Extensive range of local Ice Cream

**Locally Grown Fresh Fruit & Vegetables**

Homemade Cakes & Pies

**and many more local ingredients .....**

# perfectly you

cosmetic injections

Treatments that help soften the fine lines and wrinkles on your face:

- Free personal consultation prior to undertaking any procedure
- Forehead lines, crows feet
- Lip lines, nasolabial folds
- Treatment for excessive underarm sweating (hyperhidrosis)

Dr Pip Pettit BM FRCGP Aesthetic Practitioner, Sherston, Wiltshire

Tel: 0788 7582 233

[www.perfectly-you-aesthetics.co.uk](http://www.perfectly-you-aesthetics.co.uk)

## Dogs again

A report has been received of a person recently seen exercising their dog on the Recreation ground and allowing it to defecate. This is completely unacceptable and there are clear 'No dogs' signs which have been in place for many years.

## Christmas lights

Thanks to all those residents and businesses which participated in making the High Street so festive. It would be appreciated in due course if all lights could kindly be returned to 37 High Street.

## Mat boost

Sherston Short Mat Bowls Club has now acquired a second mat which allows many more matches per session.

The club meets at the village hall every Wednesday from 7.30 pm. At £2 an evening (£1 for under 18s) this is fantastic value for money and all are very welcome. With ages ranging from teenagers to those in their 80s this really is a sport which everyone can enjoy and become fit at the same time. No need to join or book – just turn up on the night. Tuition freely given for those new to the game.

## sherston.net

Don't forget to get news of your event up on the revamped community site for Sherston – [www.sherston.net](http://www.sherston.net) as well as in the Cliffhanger. It's a great way of making sure you increase your publicity and help maximise attendances.

If your group or business isn't yet listed make it a new year's resolution now. Don't miss out - contact [sherston.net@gmail.com](mailto:sherston.net@gmail.com) straightaway.

## Malcolm Jarrett

Hazel and the family would like to express their heartfelt thanks for all the cards, letters, phone calls, gifts and personal messages received since Malcolm's death.

Malcolm's funeral was a truly joyous celebration of his life. We were totally overwhelmed by the number of people attending and by the love and support that was in the air on that cold, clear day. Because of the previous funeral also being a large one, we were late going into the crematorium and it was not possible for names to be taken. If you were one of the people we were unable to speak to, please get in touch, as we would very much like to have a word with you.

*Hazel and the Jarrett family*

### Sherston Auto Services

**M.O.T  
Test  
Centre**

**Servicing & Repairs**

**Diagnostic & Service  
Indicator Reset**

All at competitive rates

**MONDAY - FRIDAY 8am - 6pm**

**SATURDAY 8am - 1pm**

Courtesy car available

**FREE COLLECTION & DELIVERY  
IN THE SHERSTON AREA**

**01666 840522**

Unit 1, Lordswood Farm, Sherston, Malmesbury SN16 0JZ

Member of the Ford Blue Oval Club

Genuine Ford parts fitted

Proud sponsors of Sherston Youth Football

### Martin Ward & Andy Walden

Estate & Garden

Maintenance Incl:

Clearance work

Hedge & Grass Cutting

Any types of Fencing

Any Job Considered

Fully Insured

Competative Rates

Mobile 07810136778

### STANTON COMPUTER SERVICES

We come to you!

PC repairs

Upgrades

Installation of new hardware

Wired and wireless networking

Internet and email set up and coaching

Virus cleansing

Please call Nick Greene on 01666 837850

Mobile 07887 721396

Email: [nick@computerfixer.org.uk](mailto:nick@computerfixer.org.uk)



# Tetbury Art Society Roy Baker Memorial Lecture 2011 Portrait of an Artist

Speaker: Nicky Philipps, portrait painter of the first official painting of TRH Princes William and Harry commissioned by the National Portrait Gallery.

Nicky painted the double portrait largely in her South Kensington studio, although the composition was planned during early sittings at Clarence House. She will talk about her career to date and her methods of work, using a power point display.

To be held at: The Orchard Room, Highgrove House, Tetbury, Gloucestershire by kind permission of TRH The Prince of Wales and The Duchess of Cornwall on Wednesday 16 March 2011 at 2.15 pm.

Tickets are £25 each, non-refundable, to include refreshments and cakes

Please contact Gill Ashley 840993

All proceeds to The Prince's Trust. For further information visit [www.tetburyartsociety.org.uk](http://www.tetburyartsociety.org.uk) or [www.highgroveshop.com](http://www.highgroveshop.com)

## Winter watchout?



The continued cold weather may be disruptive for our festive plans, but it does also provide the opportunity to see rare birds. This picture of a Waxwing was taken in Sherston on 9 December. Waxwing sightings in the UK are usually confined to a few locations on the East coast when cold weather in the usual winter feeding grounds of Scandinavia forces small flocks across the North Sea to look for food. The recent cold snap has meant that there have been unusually frequent sightings right across the UK. So if you see a small flock of starling sized birds feeding on red berries it might well be worth a second look to get a sight of this exotic looking bird.

### Carpenters Arms

01666 840665

Curry Quiz Night - Sun 2 Jan

Scottish Night -

Wed 26 Jan £9.95 pre-bookings only

Live Music - Sat 29 Jan

Steak night every Tuesday - 2 x 8oz Rump  
& Bottle of Wine £19.95

£5 lunch specials - Mon - Fri

Check boards for details of events

### Computer Problems?

At Home or Business

We Come To You

Fast Professional Service from  
Microsoft Qualified Staff

### Silverchart Systems Ltd

[www.silverchart.co.uk](http://www.silverchart.co.uk)

Call us now: 01666 840531

E: [office@silverchart.co.uk](mailto:office@silverchart.co.uk)

Anti-Virus /Anti-Spam/Parental  
Control Software

Fault Diagnosis & Repair

Broadband Internet & Email Setup

Friendly & Helpful Advice

### C.J.GOUGH

PAINTER &  
DECORATOR

41 The Tarters,  
Sherston,  
Malmesbury,  
Wiltshire  
SN16 0NT

Telephone:

01666 841003

Traditionally finished COTSWOLD STONE  
of the very finest quality  
direct from our quarry



Walling Stone •  
Building Stone •  
Roofing Tiles •  
Garden Stone •

Tel: 01666 840443  
Fax: 01666 840191

[www.knockdownstone.co.uk](http://www.knockdownstone.co.uk)  
Knockdown Stone,  
Halfway Bush Farm, Knockdown,  
Tetbury, Gloucestershire GL8 8QY

### WessexAuctionRooms

Located 1/2 mile off junction 17 off M4

### ANTIQUE & COLLECTABLES AUCTIONEERS

- Regular Auctions of Antiques, Collectables, Toys, Sports Memorabilia & General Items
- Items marketed to a world wide audience via *Live Online Bidding* facilities at Selected Auctions
- Free Auction Advice without obligation
- Modern 5000sqft Auction Rooms
- Valuations for Probate & Insurance
- Full & Part House Clearances, Specialist collections & Single Items sold



01249 720888

Westbrook Farm, Chippenham, Wiltshire, SN15 5LH

[www.wessexauctionrooms.co.uk](http://www.wessexauctionrooms.co.uk)

# Old School plans

The plans having been registered by Wiltshire Council are now open to public consultation until 6 January.

Reproduced on page 11, 13 and 16 are the proposed first floor plan and elevations, ground floor plan and the Post Office's proposed shop fitting plan. All the plans and supporting documentation can be viewed on line at:

[planning.northwilts.gov.uk/DOnline/AcolNetCGI.gov](http://planning.northwilts.gov.uk/DOnline/AcolNetCGI.gov)  
and quote reference 10/04425/FUL

Comments both for and against can be made on line by following the link or in writing quoting application no 10/04425/FUL to Planning Services Wiltshire Council Monkton Park Chippenham SN15 1ER. Hard copies of the plans can also be viewed at that address.

If you support the application, you may care to sign the petition in the Post Office.

Reproduced below is some of information in support of the application which was given at the public display in the village hall on 18/19 December.

## Background

The Sherston Old School premises are Grade II listed and occupy a prominent position on the High Street within the Sherston Conservation Area.

The Old School (OS) premises have been vacant for the last 5 years – following the relocation of the School to a new site off Knockdown Road.

The Parish Council is currently negotiating the purchase of the OS premises to secure their use for the long term benefit of the Community. These negotiations have been proceeding for some considerable time but it is anticipated that they should now be completed within the next few weeks.

In anticipation of this event and in order to speed

up the refurbishment process the decision has been made to submit this application.

## The Proposal

The application proposes the repair and refurbishment of the existing building so as to allow it to be subdivided into a number of possible commercial and/or community uses. The eastern half of the building will be occupied by the Village Store/Post Office. This will allow the Post Office/Stores to significantly increase their floorspace and hence allow them not only to significantly expand the range of goods and products sold from the premises but also to ease the congestion currently experienced in the Post Office premises.

The rest of the building will be subdivided into several potential small units. No specific uses have as yet been identified for any of these units. The submitted application seeks permission for a range of possible options including: other retail shops; professional services; offices; and/or community uses (e.g. exhibition space/meeting rooms etc.).

The basic shape and size of the building will remain unaltered. No additional floorspace is proposed. The existing redundant mobile classroom situated to the rear of the building will be removed. The external appearance of the building will remain virtually unaltered – existing windows and doors simply being refurbished or replaced. Some new openings will be created to provide pedestrian access to the rear of the premises.

## Access and Parking

Vehicular access is proposed to be provided to the rear of the premises via the existing Village Hall (VH) accessway. The submitted application seeks permission to remove a small section of the existing stone wall between the VH yard and the former 'school yard' so as to enable the school yard

*Continued on page 12*

## CARRIERS FARM BED and BREAKFAST

**Luckington Road, Sherston**

**En-suite double rooms**

**English breakfast**

**Contact Brenda**

**01666 841445 - 07989355171**

**[www.carriersfarmbandb.com](http://www.carriersfarmbandb.com)**

**oven**  
oven valeting service

**Ovenu (South Cotswolds)**

...punctuality, pride, courtesy and quality  
all come as standard...

- Range & AGA specialist
- Ovens and hobs
- Extractor hoods
- Microwave ovens
- Unique valeting process
- Caustic soda free products



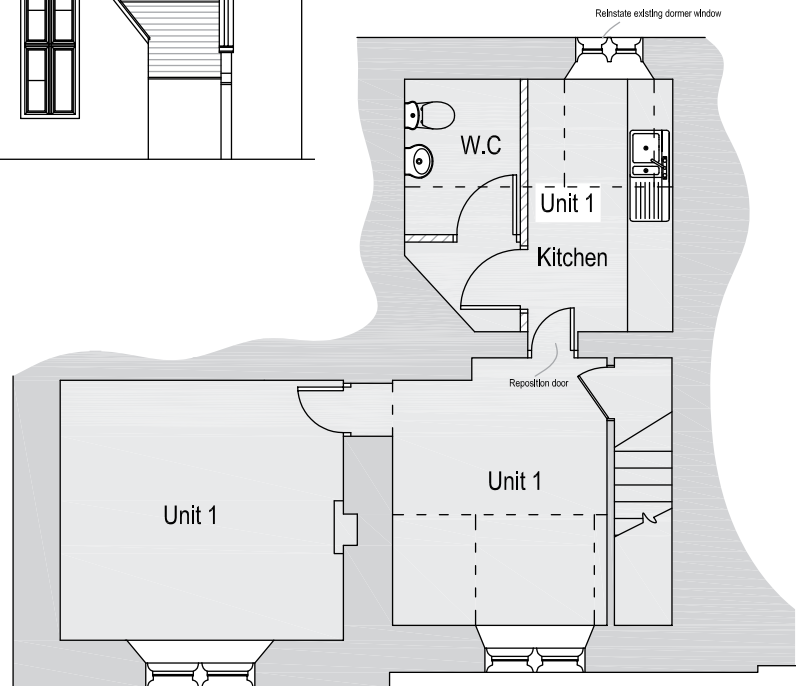
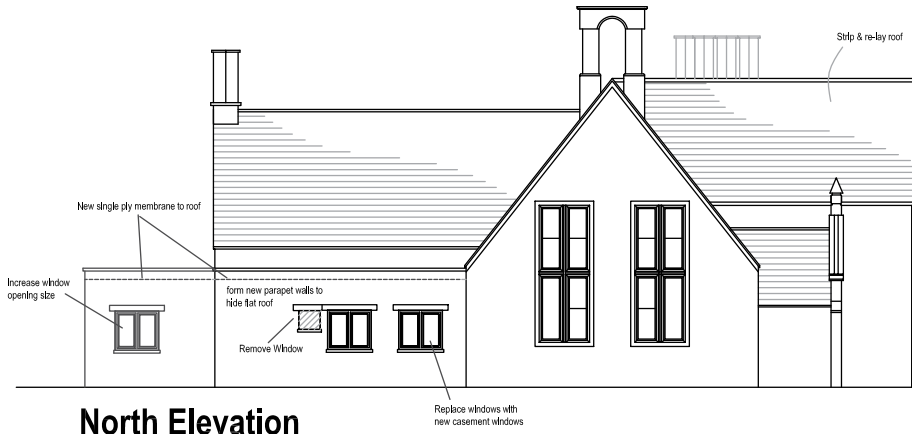
For more information  
please call  
**Clive Wallace on**

**0117 932 5115  
07825 709 354**

**I look forward to  
hearing from you**

**the UK's favourite oven cleaning specialists**

**[www.ovenusouthcotswolds.net](http://www.ovenusouthcotswolds.net)**



Part First Floor Plan





to be accessed by light vans and cars only. Future occupiers will be asked to undertake most deliveries from the rear of the premises. A limited amount of car parking is proposed to be provided to the rear of the OS for use by future occupiers of any of the proposed units. Servicing by large vehicles will have to be undertaken from the front of the premises as large vehicles will not be permitted to use the VH access.

It should be remembered that when the OS premises were last occupied and used as a 'school' all such access had to be taken off the High Street and all employees and visitors had to park on the High Street. There are currently c.20 persons employed at the New School – most of whose vehicles would have had to be accommodated on or near the High Street if the OS was still in use. (N.B. There are currently over a dozen vehicles parked within the school grounds on a daily basis). Local residents may recall that during the morning and afternoon school-run peaks the situation on the High Street was often chaotic. The proposed use of the OS premises for a range of commercial and community use will have minimal impact by comparison.

Ownership of the proposed new rear access to the OS premises is vested in the VH. Arrangements are being made to create a formal 'Right of Way' to the rear of the OS premises. In exchange for granting this right of way the VH is to be given access to part of the OS rear yard for its own use.

A new pedestrian access is proposed to be provided through the existing stone wall to enable some of the land to the rear of the OS to be brought into such use. The precise details of this arrangement cannot be concluded until the requirements of the Local Planning Authority are known.

In addition, it should be noted that, whilst not shown on the submitted planning application, it has been agreed that a new fence/gate will be erected across the VH yard in an appropriate location to safeguard the continued use of the yard by children when the Pre-School or similar activities are taking place. The existing gated access out onto the High Street will not be altered as a result of these proposals.

## SOSCIC

The Planning Application itself has been submitted by SOSCIC (the Sherston Old School Community Interest Company). This Company has been specifically created for the purpose of seeking planning permission and thereafter (should planning permission be granted) the early implementation of the approved scheme. The hope being that the building itself can be made weather and watertight as soon as possible and the first phase (likely to be the Post Office/Stores) ready for occupation by November next year.

*Proposed Post Office Fitting Plan on page 16*



## Sherston Post Office Stores



**At your service**



Full range of Post Office services  
Everything you need from a Village Store

**Open Monday to Friday 7.00 – 6.00**

**Saturday 8.00 – 1.00**

**Tel: 01666 840202 / 841021**

## D.J. HICKS ANTIQU FURNITURE

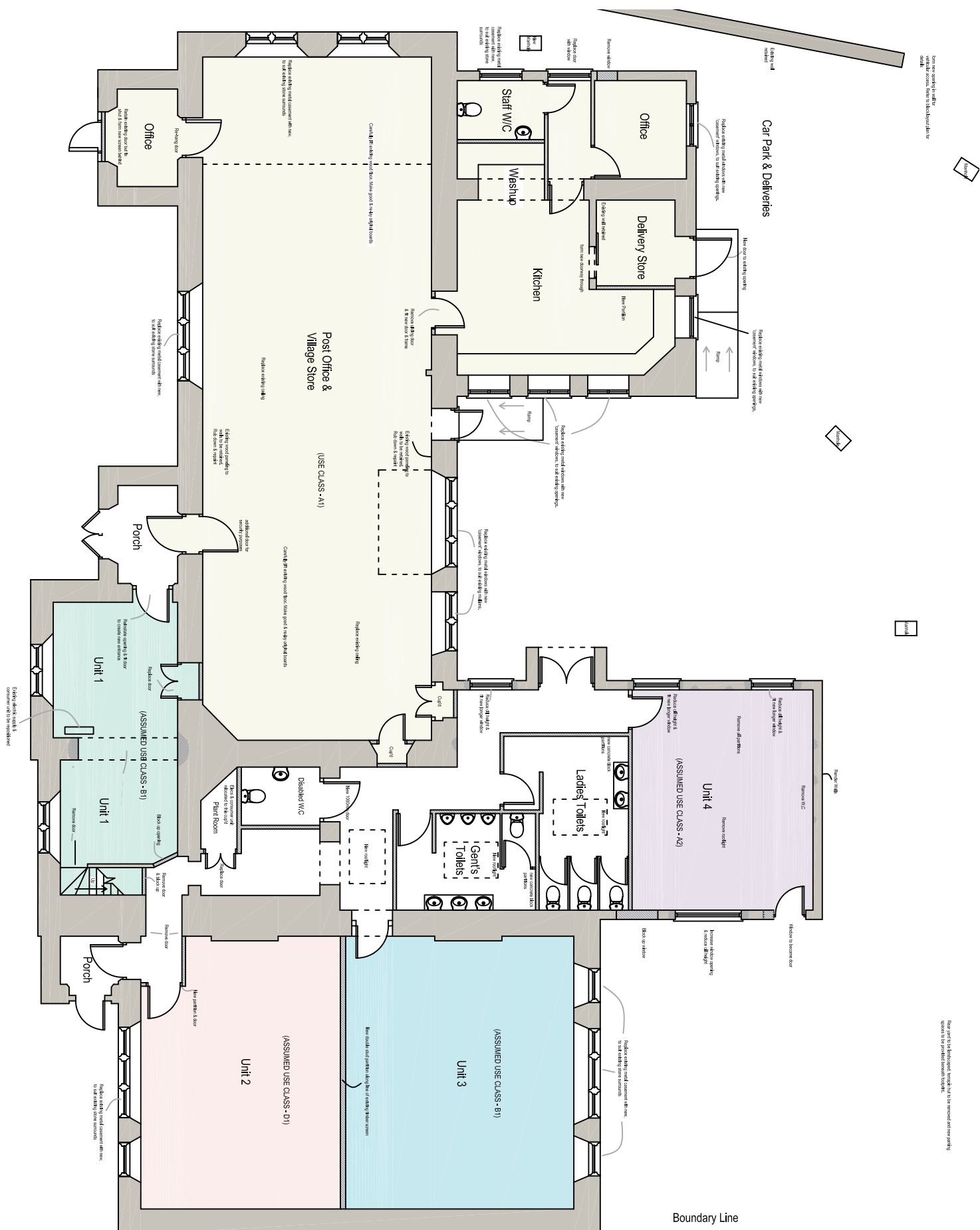
Unit 1a Warren Business Park, Knockdown  
Nr Tetbury, Gloucestershire GL8 8QY

Tel: 01454 238004

Mobile: 07889 655152

Email: [djhicksantiques@hotmail.co.uk](mailto:djhicksantiques@hotmail.co.uk)

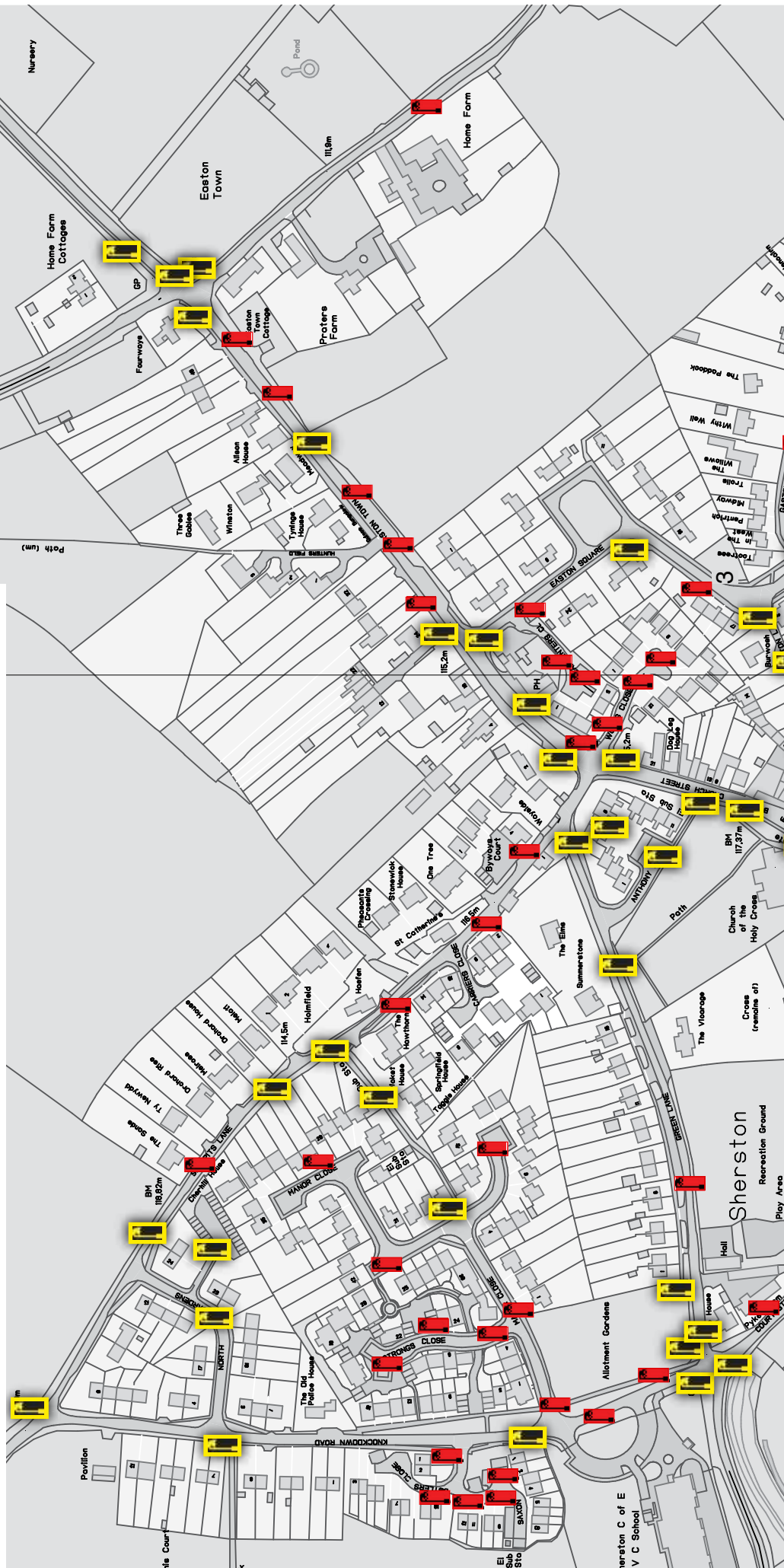
Website: [www.djhicksantiquefurniture.co.uk](http://www.djhicksantiquefurniture.co.uk)



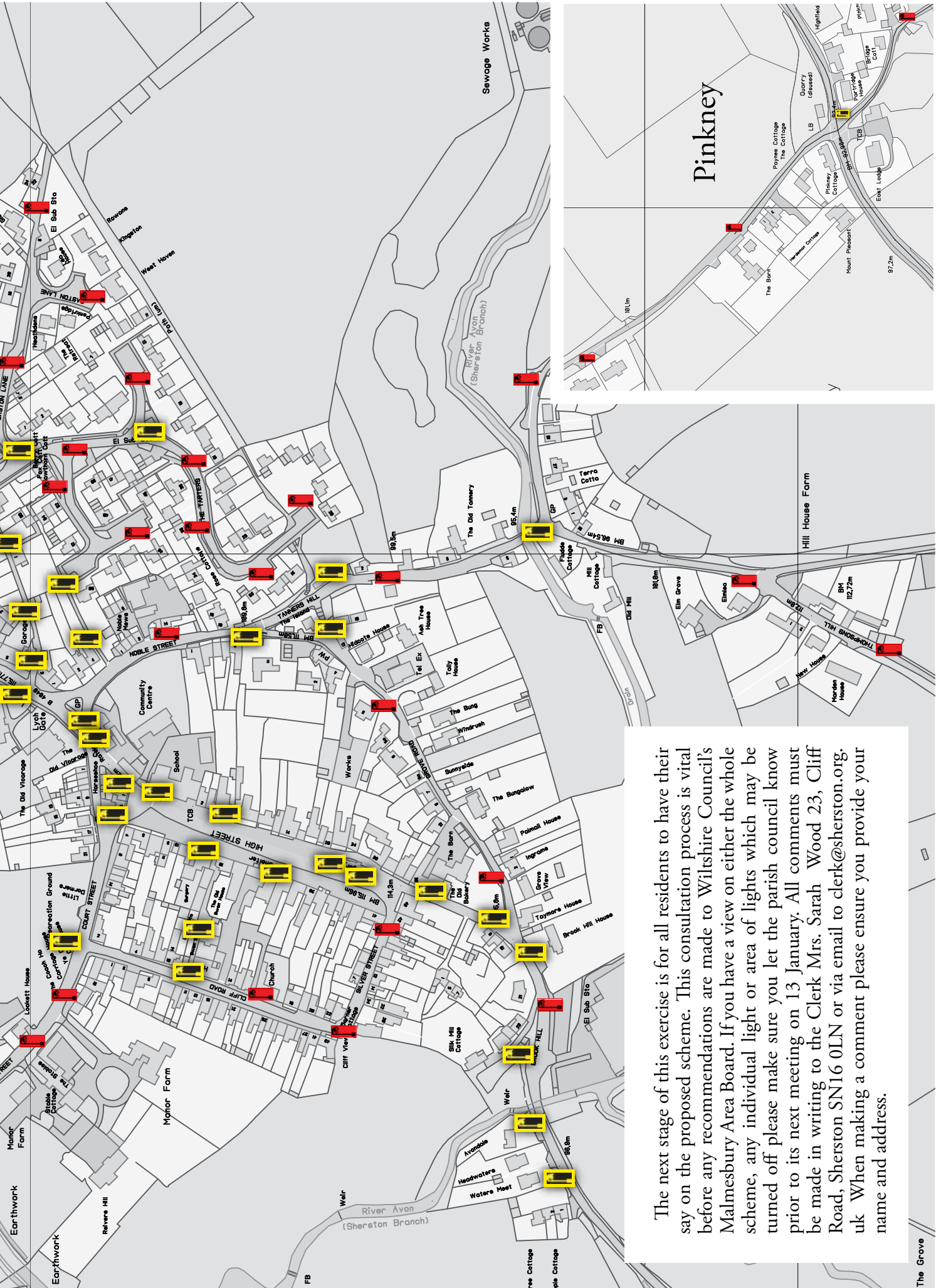
# Turn that light out?

A check by Wiltshire Council highway engineers and their Safer Communities team has now been carried out of those lights initially identified by the parish council as being suitable to be part of the Wiltshire pilot scheme to be switched off between midnight and 5.30am. The intention is to reduce energy costs, the carbon footprint and local light pollution.

The maps on these pages show the position of every street light in Sherston and Pinkney. The lights shown in red are those which could be turned off whilst all in yellow are to remain on throughout the night. Essentially all lights at road junctions and on footpaths away from the highway stay lit as well those serving Anthony Close and North End Gardens where there are high numbers of elderly residents. Additionally most lights are to remain along the B4040 as it runs through Sherston. Please note there are no street lights at all in Willesley.









# Police consultation

Wiltshire Police Authority (WPA) is seeking the public's views on the future of policing across the county with the publication of a short questionnaire on the authority's website.

The authority's annual budget of £108 million must be reduced by £15 million over the next four years to meet government spending cuts.

It is the police authority's responsibility to ensure the police continue to provide an effective and efficient service across the whole of the Force area. The authority, working with Wiltshire Police, has developed plans to achieve the savings needed but it requires difficult decisions.

WPA Chairman Chris Hoare said: 'We are committed to keeping officers on the streets and protecting the frontline as far as possible but we want people to give us their views and tell us what they value in their police service.'

An at-a-glance guide about the plans, along with further information and how to give your feedback are available on the WPA website [www.wiltshire-pa.gov.uk/](http://www.wiltshire-pa.gov.uk/)

The consultation process will continue until 11 February 2011.

## MAN FOR ALL SEASONS

WILL UNDERTAKE  
ALL HOUSE/GARDEN  
MAINTENANCE  
NO JOB TOO SMALL

From

CUTTING HEDGES,  
WEEDING THE GARDEN  
& CUTTING DOWN TREES

To

PAINTING & SMALL JOBS  
IN THE HOUSE

ALL MACHINERY PROVIDED  
- LOG SPLITTER AVAILABLE

**01666 825463**

*Philippa Jayne's  
Cupcakes*



Sherston  
North Wiltshire  
07825 206294

Philippa.Jaynes.Cupcakes  
@hotmail.co.uk

[www.philippajaynescupcakes.com](http://www.philippajaynescupcakes.com)

# Local Policing

No doubt by now you will have seen PCSO Durry Maule and me often on patrol in Sherston as part of the Malmesbury Rural Police Team. We are based at Malmesbury Police Station but try to get out patrolling the local community as much as possible. In addition, we hope to be able to meet with you in your village at a specified time and place at least four times a year. To that end, please note that I or Durry will be parked in an appropriately marked Police car for our first meeting as follows:

Sherston High Street near the Post Office between 2.30pm and 3.30pm on Wednesday 9 February.

In the meantime if you want to talk to us about local issues such as parking near the school or antisocial behaviour call us on 0845 408 7000 and ask to be put through to either Durry or me. Better still (as we try to be out working in the community as much as we can) why not email us on [malmesburyruralnpt@wiltshire.pnn.police.uk](mailto:malmesburyruralnpt@wiltshire.pnn.police.uk). We pledge to try to answer all emails within 24 hours of receipt.

Looking forward to hearing from you about matters that concern you.

PC Steve Humphries

## Adkins

### ELECTRICAL CONTRACTORS

Specialists in: **Fuse Boards · Consumer Units  
Lighting · Re-Wiring · Extensions · Alarms**

Fully Qualified, Part P Building Regulations, 17th Edition, City & Guilds

**07851 111800**

**01666 575127**

[www.adkinselectrical.co.uk](http://www.adkinselectrical.co.uk)



## Special Interest Holidays for discerning travellers

- **Fine Arts & Antiques tours** *with the BBC's Antiques Roadshow expert Eric Knowles*
- **Patchwork & Quilting holidays** *with Karin Hellaby*
- **Tours of Suffolk Churches** *with Roy Tricker*

Arena Travel is dedicated to helping you find the holiday that's right for you. With over 40 years' experience in providing top quality trips and tours in a wide range of special interest and hobby areas, Arena Travel is genuinely 'passionate about your passions'.

**Other holidays include Bridge, Art & Architecture,  
History, Literature & Food & Drink.**

**ARENA**  
T.R.A.V.E.L

Visit our website: [www.arenatravel.com](http://www.arenatravel.com)

Or give us a call on: **01473 660804**



Arena Travel, Explorers House, 2 Betts Avenue, Martlesham Heath, Ipswich, IP5 3RH

For the Widest Range of Bedding,

Hanging Basket & Patio Plants in the Area

**FOXLEY ROAD NURSERIES**

Herbaceous Perennials & Alpines

Vegetable and Herb Plants

**Foxley Road, Malmesbury**

Tel: 822171 [www.foxleyroadnurseries.co.uk](http://www.foxleyroadnurseries.co.uk)



## M.D.BISHOP LTD.

2 Farleaze Norton, Malmesbury, Wilts. SN16 0LB

Roofing Contractor, Stone Tile specialist  
Stripping, & Battening of Period & Traditional House Roofs  
Slates, Concrete, and Clay Tiles  
All types of Roofing undertaken  
Free Estimates



Tel/fax 01666 837455  
Mobile No. 07786 647134





# Digital projectors roll in Malmesbury

## First touring digital screenings begin at Malmesbury's town hall

December saw the projector roll for the very first digital screenings hosted by White Horse Pictures in Malmesbury Town Hall. The new scheme is bringing the big screen to viewers who would normally have to travel long distances to enjoy a modern digital cinema experience, by operating top-of-the-range portable digital cinema standard projection equipment in venues across the county. The screen is a massive six meters wide. Films will include something for all ages.

Monday 10 January will see screenings of the recently released blockbuster Harry Potter and the Deathly Hallows at 5pm and 8pm. Another Year will be shown at 2pm. Later in the month on Monday 24 there is The American at 2pm and 8pm with the Secret of Kells at 5pm. Tickets are available from the Tourist Information Centre at the Town Hall or on the door. For 2pm and 5pm shows the cost is £4 for adults and £3 for children. Tickets for 8pm are £6.

White Horse Pictures is funded by South West Screen, the UK Film Council and Wiltshire Council. It is being delivered by a consortium led by South

West Screen, and including Wiltshire Council plus rural cinema operator Moviola and others. The success of this venture depends very much on the number of volunteers that Malmesbury Town Council has been able to attract for all manner of jobs. So far we have 35 which has given the project a brilliant start.

People have been saying for years that cinema returning to the town would be a real plus. So please help us make it a success. So when you think Monday think 'Movies on Monday.'

### MARY DERRICK SWIMMING LESSONS FOR CHILDREN

#### AT WESTONBIRT SPORTS CENTRE

NOW OFFERING LESSONS MON, TUES, WED & THURSDAYS AFTER SCHOOL

**We have classes for all abilities:-**

Pre-school classes (3-5years) have the teacher in the water, parents do not have to get in unless necessary!

Beginners classes have the teacher in the water. Two levels of improver classes & also lane swimming for advanced improvers.

All teachers are fully qualified & crb checked. We follow the asa award scheme & have termly "badge nights" for distance awards. We also run personal survival classes, bronze, silver & gold challenge awards & also rookie lifeguard courses. Holiday courses also available.

All lessons run half termly & are ongoing so no need to keep booking in every term!

TEL. 01666 841133 or 077 144 252 01

WE HAVE BEEN ESTABLISHED IN THE MALMESBURY AREA FOR 20 YEARS  
ASA SWIM SCHOOL MEMBER

[www.maryderrickswimming.com](http://www.maryderrickswimming.com)

### Foxley Plumbing & Heating

Oil Boiler Installation, Servicing and Repairs

Oil Tank Replacement

Heating Installation and Repairs

Bathroom Installations

Unvented Cylinder Systems

No Job Too Small

**Tim Hibbard**

Malmesbury (01666) 822863

Mobile 07966 462202

Email [foxleyph@btinternet.com](mailto:foxleyph@btinternet.com)



### Do you want to know **YOUR FAMILY HISTORY**

Skeletons in the cupboard,  
convicts, statesmen, rich  
man, poor man,  
beggar man, thief?  
We all have them and they  
are hiding there waiting to  
be found.

Let me find them for you.

**Beryl Clampton**

Call anytime: 01666 841201

or 07850 623517

e-mail: [beryl@clampton.com](mailto:beryl@clampton.com)

### **Firewood**

*Dry seasoned,  
hardwood logs*

*Barn stored*

*any size available*

*Also kindling sold in nets*

*Delivered to your door*

*For more details call Steve on*

*01454 232941 or*

*07974194012*



Creative Hairdressing has fully qualified and experienced stylists in all hair lengths and styles, both modern and traditional.

Come and join us for that creative experience so we can create that individual look for you.

For more information or to book an appointment contact

Creative Hairdressing,

3 Market Place,

Tetbury,

01666 502949

[www.creativehairdressing.co.uk](http://www.creativehairdressing.co.uk)



# James Morton's Porkchop

Saturday 12 February 2011 at 8pm sees the latest high quality Rural Arts Wiltshire event at Sherston Village Hall.

James Morton's Porkchop is a quartet from Bristol specializing in Funk and Boogaloo with Gospel/Jazz inflections. The band comprises of musicians who to date have performed with the legends of Funk, Jazz, Blues and Rock. These legends include: Fred Wesley, Pee Wee Ellis, Dr. John, The Meters, The New Mastersounds, Snowboy, Martha High, Andy Sheppard, Roy Ayers, Tony Allen, Kasabian to name but a few. Porkchop was formed in January 2009. Its mission is to eliminate the introspective and self indulgent elements that some "jazz" music can often adhere to.

For more on Porkchop and to listen to its music check them out on [www.myspace.com/porkchopfunk](http://www.myspace.com/porkchopfunk)

Tickets will be on sale in January from Sherston Post Office Stores or via 01666 840348. Adults £6.50, Senior Citizens £5.50, Children £3.50 Family (2 +2) £16. Licensed bar. Proceeds to village hall funds.



## Optimum Mobility

of Malmesbury



Also walking aids, bathing & household aids  
The Old Dairy, Pinkney Park, Near Sherston  
01666 840060

[www.optimummobility.co.uk](http://www.optimummobility.co.uk)

## Russ Greenman Countryside Management

FENCING  
DRY STONE WALLING  
FORESTRY  
PADDOCK CARE

**CALL RUSS ON  
07588 44 44 19**

## RODBOURNE FIREWOOD

Seasoned hardwood  
**LOGS**

Cut to your needs &  
delivered locally  
at no extra cost

**Call David Hillman  
on 07711839936**



Local Electricians, Local Electrical Suppliers

Based Pinkney Park between Sherston and  
Malmesbury

NICEIC / Part P registered

We cover all domestic / commercial rural  
and industrialelectrical work including  
fault finding and 3 phase

Main office 01666 841427

Winners Best Small Company 2009  
Finalists Wiltshire Business Awards  
Feb 2010.

The Old Cake House, The Dairy,  
Pinkney Park, Sherston, Malmesbury  
Wiltshire SN16 0NX

## 5\* holiday cottage Lantern House - Sherston



*family &  
friends  
visiting?*

flexible week & short break  
rentals

For more details & bookings

tel: 01666 505807  
mob: 07900 656498  
email: [lanternhouse@cotswolds.plus.com](mailto:lanternhouse@cotswolds.plus.com)  
website: [www.cotswolds.plus.com](http://www.cotswolds.plus.com)

## GILLIAN NOBLE

SOFT FURNISHINGS

THE CURTAIN  
WORKROOM  
1<sup>ST</sup> FLOOR  
1A MARKET LANE  
MALMESBURY  
WILTSHIRE SN16 9BQ

TEL: 01666 825532  
MOB: 0776 0142 666  
[gilly.noble@homecall.co.uk](mailto:gilly.noble@homecall.co.uk)

## Lumley Garden & Pet Supplies

Stainsbridge Mill, Gloucester Road, Malmesbury, Wiltshire, SN16 0AJ  
Tel: 01666 822325 E-mail: [etlumley@googlemail.com](mailto:etlumley@googlemail.com)  
[www.lumleypetsupplies.com](http://www.lumleypetsupplies.com)



\* Top Leading Brands of Food & Treats \*  
\* Our Own Label Premium Dog Food \*  
\* Bowls, Toys & Accessories \*  
\* Beds & Cushions \*

\* Wild Bird Food & Products inc. Live Food \*  
" for you and your pet's every need. "

Delivery Service Available

# The Cliffhanger New Year Quiz

The Cliffhanger celebrated the two-year anniversary of its launch in October. But how much do you remember from the 25+ editions that have been published since then?

Regrettably, the Cliffhanger's budget is such that there are no prizes for successfully completing this little saunter down memory lane.

**1.** How many pages were in the launch edition of The Cliffhanger in October 2008?

- (A)2 (B)4 (C)8 (D)12

**2.** Which television newsreader appeared on the front page of The Cliffhanger in November 2008?

- (A)George Alagiah (B)Fiona Bruce  
(C)Huw Edwards (D)Sophie Wrayworth

**3.** Which Sherston resident was recognised for winning a national award in the December 2008 edition of The Cliffhanger?

- (A)Tom Dryden (B)Gail Mather  
(C)Pip Pettit (D)Anthea Young

**4.** In the February 2009 edition, the police appealed for help to "nail the vandals" who damaged which of the following?

- (A)The gates to the village hall  
(B)The bus shelter on the High Street  
(C)The front door of the Tolsey surgery  
(D)The Jubilee tree

**5.** In April 2009, who took over from Lynda Fleming as copy editor of The Cliffhanger?

- (A)Frank Hatt (B)Chris Lovell  
(C)Martin Rea (D)Phil Moore

**6.** Whose achievement of polishing off four pancakes in three minutes and 28 seconds was recognised in the April 2009 edition of the Cliffhanger?

- (A)Elise Harvey (B)Minnie Hulme  
(C)Jennie Lamont (D)Sue McKechnie

**7** ...and in the same edition, who was photographed with and without his hair having raised £515 (he raised more after publication) for the 'Hairlift for a Stairlift' campaign?

- (A)Paul Mather (B)Jason Read  
(C)Rob Strong (D)Hector (Jock) Walker

**8.** In the June 2009 edition, The Cliffhanger reported on "an amazing find" by High Street resident David Thorpe in his garden. What exactly did David find?

- (A)A fragment of a sword believed to have been wielded by John Rattlebone  
(B)An unexploded world war II bomb  
(C)One of Jason Read's shirts  
(D)A coin dating back to the English civil war

**9.** In July 2009, The Cliffhanger reported on the crowning of which new Mangold Maid?

- (A)Hannah Morgan (B)Caroline Scarlett  
(C)Amelie Smith (D)Florence Sutcliffe

**10.** What were the names of the triplets pictured on the front page of The Cliffhanger in August 2009?

- (A)April, Hannah and Sam (B)Charlotte, Grace and Pippa  
(C)Gwennie, Leo and Mae (D)Kirsty, Ruby and William

**11.** In September 2009, The Cliffhanger commented on the fundraising activities of PROPS, reporting that it had raised how much from the Bristol to Bordeaux bike ride?

- (A)£15,700 (B)£19,000 (C)£24,100 (D)£27,750

**12.** In October 2009, the cricket team was featured on the front page of The Cliffhanger, in recognition of a victory that ensured it finished top of its league. But where was that victory achieved?

- (A)Chedworth (B)Great Rissington  
(C)Oakridge (D)Windrush Valley

**13.** In January 2010, Sherston's Hannah Clegg was recognised in The Cliffhanger for what very special achievement?

- (A)Winning a scholarship to Cambridge University  
(B)Captaining the England under-16 women's hockey team for the first time  
(C)Winning a children's competition to design a garden for the 2012 Olympic Park  
(D)Sailing solo across the Irish Sea

**14.** Whose photos appeared on the front page of The Cliffhanger in March 2010, having tied in the Grand Final of the 2010 Pancake eating competition?

- (A)David Reeves & Andy Tremellen  
(B)James Harmer & Mike Shortridge  
(C)Ross Morgan & Huw Bowles  
(D)Kevin Smith & Dave Sutcliffe

**15.** What was the April 2010 edition of The Cliffhanger called:

- (A)The Coathanger (B)The Chinbanger  
(C)The Chinwagger (D)The Chainlugger

**16.** In April 2010, The Cliffhanger reported on the success of Sherston children Emily Vaughan and Sam Watling in which activity?

- (A)Boules (B)Chess (C)Scrabble (D)Skittles

**17.** In May 2010, The Cliffhanger published a review of the Sherston Drama Group's latest play. What was the play?

- (A)Absurd Person Singular (B)A Room with no View  
(C)Holiday Snap (D)The Importance of Being Earnest



# THE ANCIENT ORDER OF SHERSTON MANGOLD HURLERS

To many a member the long and sometimes restless nights of January bring with them thoughts of reproduction.

Seed for the coming year's crop must soon be obtained. As usual an order will be placed with EW King & Co of Kelvedon Essex for a supply of Yellow Eckendorf a favourite for many years with the Sherston hurling fraternity. Some though hanker after other varieties and none more so than the Keeper of the Technique Miss Jennie Lamont who has always had an insatiable desire to grip the enormous stem of a Mammoth Long Red. Members are queuing up to satisfy her need for such a magnificent root and extensive yet so far unsuccessful searches have been underway for some time to secure a supply of seed.

The picture right, shows some superb specimens of Mammoth Long Red being harvested in 1900 on the Steves Farm on Lulu Island which today makes up most of the city of Richmond, a major suburb of Vancouver in Canada. The variety is said to produce around 130,000 pounds per acre with each mangold weighing about 10 pounds. Both the roots and the



tops of the plants were fed to cattle. These roots produced about 3,000 pounds of mangold seed per acre and Steves usually grew about 2 acres of seed selling for 75 cents a pound. In 1889 Mr. W. H. Steves offered a prize of a piece of land to the person who grew the largest mangold from his seed. A Mr. T.J. Tully won with a mangold weighing an unbelievable 63 pounds. Such a beast today would surely satisfy the cravings of Miss Lamont?

*The Keeper of the Quill* 

18. Boules 2010 was sponsored by Wadworth Brewery. According to the July 2010 edition of The Cliffhanger, what was the cost of this sponsorship?

- (A)£2000 (B)£2500 (C)£3000 (D)£3500

19. According to the same edition of The Cliffhanger, how many combined hours did the 49 brave souls who cycled from Bristol to Bordeaux for PROPS in the summer of 2010 spend in the saddle?

- (A)1512 (B)1666 (C)1728 (D)1880

20. What was the name of the team that was featured on the front page of the November 2010 edition of The Cliffhanger having won the annual hurl in October?

- (A)Five O'Clock Shadows (B)The Mangold Tossers  
(C)No Sharking (D)The Willow Ade Mynes

## Answers:

- 1.(B) 2.(A) 3.(D) 4.(B) 5.(A) 6.(B) 7.(D) 8.(D) 9.(C)  
10.(C) 11.(B) 12.(A) 13.(C) 14.(C) 15.(C) 16.(B)  
17.(C) 18.(D) 19.(C) 20.(C)

## How did you do:

- 19-20: You need to get out more  
13-18: Congratulations. Please report for duty next month as the new sub-editor of The Cliffhanger.  
8-12: Par for the course. You win a free subscription to The Cliffhanger for the next year (Sherston residents only)  
2-7: Write out 50 times, "I must read The Cliffhanger more carefully in future."  
0-1: Disgraceful. Your deportation order is in the post.



**Rose Hill  
Westonbirt  
SCHOOL**

Preparatory day school and Nursery  
for boys and girls aged 5 – 11




**Inspiring  
young minds**

Rose Hill Westonbirt is located in 210 acres of grounds and parkland - a safe and stimulating environment for education. As well as academic success, great emphasis is placed on music, sport, art and drama.

**OPEN MORNING: Wednesday 16th February 09:30-12:30**  
or contact us to arrange a personal tour on 01666 881400.

**Listed as one of the 'Best Schools' in the area**  
- The Times, 3rd December 2010.

Rose Hill Westonbirt School • Tetbury • Gloucestershire • GL8 8QG  
[www.rhwestonbirt.co.uk](http://www.rhwestonbirt.co.uk)

# Sherston Football Club

by Pete Brock

Hi everyone, well we have not had too much to report because when it's not freezing cold, it's too wet or snowy, but there has been a bit of action and I will start with the veterans.

First of all, I would like to say what a fine body of men turned up for the game last month, some looked like they had one foot in the grave and some looked like they should have had both feet in. So we went off and lost our second match but there is hope when one of our new arrivals Big Rich scored an excellent goal on his debut.

Anybody out there remember when Frizzer used to play and they said he wasn't much cop, well they are still right, but seriously, we are having a lot of fun and if any of us can run for more than ten minutes we will be fine. That brings us onto the first team who have only played a couple of games in the past two months due to weather and cup games. One game was against Bush FC who are our biggest rivals in the league at this time, we came off second best this time but we are still, however, second in the league and we aim to win the league this year. That is the only game lost this year so far so it's not at all bad.

Ting tong has stepped up to the plate and is now assistant manager of the first team and Matt Neal has


a new assistant in his daughter Lauren who knows more about football than anyone I know and is also going to help out with the girl's team.

Don't think there will be too many games until the New Year for any of us at the moment but we will keep you posted; although it might not be a bad thing as this time of year we all overindulge a bit but not as much as ting tong who was seen walking through the kitchen with a whole turkey between two slices of bread.

Let's get onto the reserves who have somehow worked their way into the semi final of a cup game to be played at Ciren Town's pitch, so congratulations to Matt and the boys for pulling that one off. It has been a hard season for Matt with the quality of sides he has come up against, which has surprised the first teamers that have watched the games. We are a couple of players off of having a really good team so we will just push on with it.

Knocker has been teaching the youngsters how to swerve and dodge things even when you're not on the pitch, but we hope it turns out well for him. We hope everyone had a happy Christmas and New Year and once again thanks for all the support from people behind the scenes and in the day to day running of the club, without whom we wouldn't have a club, so thanks again.

## Tigger's Nurseries



View our excellent OFSTED report and latest offers via the website

**Excellent Childcare and Education from birth-5 Years**

01666 880355

01453 750957

01666 880355

www.tiggersnurseries.com



**FOREST GREEN ROVERS FOOTBALL CLUB**

**JANUARY**  
at The New Lawn



**Admission Prices:**  
Adults: £15 Seated £13 Standing  
Conc: £10 Seated £8 Standing  
**ALL KIDS £2**  
(under 16 years of age)

**BH Mon 3 Jan 3pm**  
**CRAWLEY TOWN**

**Sat 8 Jan 3pm**  
**FLEETWOOD TOWN**

For further details on any of these or future fixtures call  
**01453 834860**  
www.forestgreenroversfc.com  
www.fgrtrust.com

**Bring a Mate - Double the Gate!**

Forest Green Rovers F.C., The New Lawn, Smiths Way, Nailsworth, Glos. GL6 0FG



Children's Shoes

## AMAZING SHOES FOR HOME, SCHOOL, PARTY AND PLAY

Stockist of Start-Rite, Buckle My Shoe, Geox and many more. Baby to Euro 43.

Why trail the High Street when you can visit us instead.

5a Church Street, Sherston, Wiltshire, SN16 0LR

Telephone: 01666 841 346

# Sportsfield – ideas needed

By Martin Rea

Sports England is administering a new £135m grant scheme called 'Places People Play' part of which is intended to improve and upgrade local sports facilities for use after the Olympics in 2012. Wiltshire Council is coordinating a county wide approach to this opportunity and contact has already been made with relevant officers as to Sherston being included in any possible bid application. The parish council has in mind developing the Knockdown Park Sportsfield to its full potential.

It will be necessary for there to be a thorough public consultation if we are to be part of the Wiltshire bid process. A comprehensive business plan will also be required.

At this stage ideas and comments are invited from local sports clubs and residents as to the facilities they may wish to see on the site. Some initial planning in this direction was undertaken just over a year ago with Sherston FC and the skateboarders but was not able to be taken forward until now due to funding issues. The site does however have tremendous potential for multi sports use so as many ideas as possible are required. It should be added that it will be absolutely essential that

facilities for women as well as for men are provided in any new development. The football club has already embraced this concept and is planning the formation of a ladies team with assistance from Wiltshire FA.

Please note that this initial consultation process is not limited to Sherston parish alone. Ideas from neighbouring parishes and their residents are also encouraged. The more people who are interested in using any new facilities the better chance there is for funding.

Please let me have your thoughts either in person, email [martdrea@aol.com](mailto:martdrea@aol.com) or on 840348.

## SELF CATERING HOLIDAY COTTAGE TO RENT IN PEMBROKESHIRE

4 Star holiday cottage in Little Haven,  
Pembrokeshire.  
Sleeps 6 + cot, ideal for families & couples  
Fully equipped with lovely sea views  
Central heating and a level  
enclosed garden  
A short walk from child and dog friendly  
beaches, pubs and the Pembrokeshire  
Coastal path. Dogs Welcome.



Please visit us at  
[www.littlehavenselfcateringcottages.co.uk](http://www.littlehavenselfcateringcottages.co.uk) or  
contact Carolyne Crowe on 07887590908

### Feel great! Feel alive!!

Come along and experience techniques  
That I have been using for 30 years to  
help people heal and live life to the full.

Find out why your **posture**  
is so important to good health.

Spinal Touch, Polarity, Cranio-sacral,  
Orthobionomy, Reiki and more.....

**can** help you feel better at any age!

Contact Angela on 07947 862622

Or make an appointment at

Shear Class & Serenity salon in Sherston

01666 840840

## Authentic Wood Floors

Natural wood  
flooring specialist

Fitting, Repairs,  
Sanding and  
Refinishing

Free estimate and  
consultation

Contact Troy

**07523 366945**

[info@authenticwoodfloors.co.uk](mailto:info@authenticwoodfloors.co.uk)

over 20yrs experience

Fully insured



Garden Services

A friendly, reliable help around the garden.

General Garden Maintenance  Dry Stone Walling

Hedge Cutting  Light Building

Painting  Lawn mowing

Call Jack on: 07732 816 315 or  
email: [jackderrick2003@yahoo.co.uk](mailto:jackderrick2003@yahoo.co.uk)

## Foot Health Care

[www.foot-health-care.co.uk](http://www.foot-health-care.co.uk)

Corns – Nail Trimming – Verrucae  
Hard Skin – Athlete's Foot – Ingrown Toenails  
Nail Infections – Cracked Heels (Fissures)

**Sina Ohms** MCFHP MAFHP Home Visits  
*Foot Health Practitioner*

Tel: 01666 838683 Mob: 07593 324 128

Corsham Chiropractic  
Clinic

(87 Pickwick Road)

Tel: 01249 716 683

The Chippenham Natural  
Therapy Centre

(above the Lodge Surgery)

Tel: 01249 443 390

**Nail Cutting Service available**

(reduced prices at clinics only)



## SHARPES Property Maintenance Ltd

**Windows and Doors  
Fascias and Soffits  
Guttering and Cladding  
Double Glazing Repairs  
Replacement Glass  
uPVC, Timber and Aluminium**

Other work undertaken

Tel. 01666 840042 Mob. 07720 717902  
Email [sharpprop@msn.com](mailto:sharpprop@msn.com)  
14 Court Street, Sherston SN16 0LL



# Groups and Regular Events in and around Sherston

## Holy Cross Church

### The Coffee Shop -

Fair Trade tea and coffee with homemade cakes

Open Thursday mornings only during winter

**Sunday services** 8am Holy Communion; 9.30am Sung Eucharist (3rd Sunday 9.30am Family Service); 6pm Evensong (3rd Sunday Evening Holy Communion)

See the Parish Life for more details

## Congregational Church

Services each Sunday 11am - 12.00 noon

For further details see the Parish Life or phone 07778 934742

## Methodist Church

Services every Sunday at 10.30am apart from 3rd Sunday in the month when service is held at Luckington.

For further details contact Cyril Hoskin on 841143 or see the Parish Life

## Gauzebrook Junior Church

Every 2nd and 5th Sunday each month in Sherston or Hullavington, joining the adult service at the end for Holy Communion. Locations – The Skittle Alley, The Rattlebone Inn, Sherston or Court House Hullavington.

Please contact Sarah Slarke on 07971 090740 for any further information.

## Easton Grey Parish Church

See Parish Life for details of services

## Ancient Order of Sherston Mangold Hurlers

Why not join us and discover the joys of mangold hurling and all its traditions? For further information email [ebplaced@aol.com](mailto:ebplaced@aol.com).

## Busy Hands Pre-school

Meets 9.10am - 12.10pm everyday in the village hall for 3 - 5 year olds. Further details call 841118

## Charity Bingo

In aid of a different local charity each month on the 3rd Friday at 7.30 for 8pm start in the village hall. 50p entry and 30p a book. Light refreshments available.

## Church bell ringing

Practices are every Wednesday 7.30 - 9.00pm.

Call Geoff Martin 840375 or come along.

## Clem's Club

Clem invites 'cheerful chaps for a chair and a chat' in the British School Rooms every other Tuesday 2.30 - 4pm, alternating with the Seniors. Donations to BSR expenses collected each week.

## Eudo Tae Kwon Do

Juniors every Tuesday at 3.15pm and Seniors Thursdays 7-9pm both in Sherston primary school hall. Abby Lees-Smith 510125 or email [info@eudotkd.co.uk](mailto:info@eudotkd.co.uk) or see the website [www.eudotaekwondo.co.uk](http://www.eudotaekwondo.co.uk)

## Footpaths group

The group has published the booklet 'Sherston Walks - a new guide to local rights of way', featuring 9 local walks and is now on sale at the post office. If you would like to learn more about the footpath group and perhaps take part in some of its activities please come along to a meeting. For further information contact Maggie McKenna on 841047 or [maggie.mckenna@harriespartnership.com](mailto:maggie.mckenna@harriespartnership.com)

## Malmesbury Area Board Meeting

For details see [www.wiltshire.gov.uk/areaboards](http://www.wiltshire.gov.uk/areaboards)

## Malmesbury Netball Club

We welcome new players of any ability as we would like to promote the sport and provide an opportunity for people to get fitter and meet new people. We have a Level 2 coach and endless support from the Wiltshire Netball Development Officer, Sophie Warner. Every Thursday at 7pm, £3 per session, payable at the front desk at the Activity Zone, Malmesbury. For further details contact Tahiti [tahitivanrooyen@gmail.com](mailto:tahitivanrooyen@gmail.com)

## Malmesbury & Villages Community Partnership

For details contact Sue Webb 824620

Email: [dennis.webb01@virgin.net](mailto:dennis.webb01@virgin.net)

## Malmesbury Rangers

Girls over 14 years meet every 2nd Thursday in the month. Further details from Helen Price 503187 or [retreatcottage17@btinternet.com](mailto:retreatcottage17@btinternet.com)

## Parish Council Meeting

Takes place on the 2nd Thursday each month at 7.30pm in the village hall. Minutes of meetings can be read online at [www.sherston.org.uk](http://www.sherston.org.uk). Further details contact Sarah Wood on 840351 or [clerk@sherston.org.uk](mailto:clerk@sherston.org.uk)

## Patchwork & Quilting Classes

1st Thursday of each month from 10am - 2pm in The British Schoolroom – N.B. **There is no class in January.** Further details from Anne Chapman on 01249 782842.

## Senior Club

Meets at 2pm in the British School Rooms every other Tuesday alternating with Clem's Club.

For further details contact Cyril Hoskin on 841143.

## Sherston 1016

Fundraising for local good causes and charities. For further details, contact Eric Thacker on 841344 or email [eric.thacker@yahoo.co.uk](mailto:eric.thacker@yahoo.co.uk)

## Sherston Badminton Club

We play every Tuesday evening from 7.30pm in the Village Hall from September to May.

For more information contact Ray Clifton on 840592.

## Sherston Boules and Carnival 2011

Please come forward and be part of the committee for 2011 – we are still looking for a new chairperson. Any new ideas and offers of help in planning or just on the day gratefully received. For more details contact the secretary Gwen Knight on 840731 or [mommaknight@hotmail.com](mailto:mommaknight@hotmail.com)

## Sherston Brownies

Meet every Wed during term time 6.15-7.30pm in the Scout Hut. All girls are welcome to join after their 7th birthday, but there is a waiting list. If you're interested, please contact Snowy Owl (Liz Walker) on 840216 for more details

## 1st Sherston Cub Scout Pack

Membership of the Cub Pack is open to those between 8 and 10 ½ years old. The Pack has regular meetings on Friday nights in term times from 6.30pm to 8.00pm. There is a waiting list for Cubs, and those interested should contact Ray Sneddon-Jenkins to obtain an application form – raysneddonj@gmail.com

## 1st Sherston (John Rattlebone) Scout Troop

Is open to young people from the village and surrounding parish from the ages of 10 ½ to 13 ½. We meet at the Scout hut on Tuesday nights from 7.00pm to 9.00pm during school term times. To join contact Mark Sparrow on 840983 or e-mail mark@scorranstone.co.uk There is currently a small waiting list to join.

## Sherston Whitewall Explorers

You don't need to have previously been a member of scouts or guides to join us, just be aged between 13 ½ and 18 and free between 8.30 and 10pm on a Friday night during term time; for further information please contact Darren Walsh - 841043 or Ewan Blair -840096 – whitewallexplorers@googlemail.com

## Westonbirt Guides

Meet in Querns Hall, Rosehill School, Westonbirt 5.30 – 7pm every Wednesday.

Sherston Brownies tend to come along if they don't join Scouts. Details from Helen Price 503187 or email retreatcottage17@btinternet.com

## Sherston FC

The club play in the Stroud league at Knockdown Park on Saturday afternoons - spectators and new players welcome. For more details contact Pete Brock on 07912 777647 or peter.brock666@btinternet.com

## Sherston Ladies' Swimming Club

Swim at Westonbirt Leisure on Wednesday evenings from 8 – 9.30pm. £38 for 15 weeks, open to any ladies, of any swimming standard, from Sherston and surrounding area. To join, please phone Annabel on 840592 or Maggie on 840969.

## Sherston Martial Arts Club

Bujinkan Budo Taijutsu. Traditional Samurai Jujutsu and Ninjutsu. Ages 13 and up, every Thursday night in the Scout Hut 7pm. For further information contact Gary Liddington 07779349115 or Gary@budotaijutsu.co.uk

## Sherston Short Mat Bowls Club

Meets Wednesday from 7.30 pm in the village hall. £2 an evening (£1 for under 18s) all are very welcome.

## Sherston Tennis Club

Sherston Tennis Club play on two hard courts off Knockdown Rd. Fees for the 2011 are: Family £80, Adult £45, Senior citizen £20, Junior (18 and under) £15. For more information, please contact the club secretary, Ashley Stopforth, on 840825. Two club sessions are now up and running, ALL club members are warmly welcomed:

Tuesday evenings 7pm onwards - contact Belinda Robinson on 840316

Friday afternoons 1pm onwards - contact Helen McLeish on 840992

Children's Tennis Coaching - further details contact Helen McLeish on 840992 or helen.mcleish@ukonline.co.uk

## Sherston Theatre Club

Excursions with a Sherston High Street-to-venue return coach service. Annual fee £20. Listings under www.communigate.co.uk/wilts/sherstontheatreclub/ or contact Helen Quirk on 840516 or Hjquirk@aol.com

## Sherston Toddler and Baby Group

The group is a fun way for children and their parents to meet and play. We meet at 10am each Tuesday in the Scout Hut. Further details contact Alex on 841095 or alex@stickyfingerscookery.co.uk

## Sherston Village Hall

Available for hire by all. Ideal for meetings, events, parties etc. For details contact the bookings officer Julia Nichols on 840633 or julia.nichols@btinternet.com

## Sherston W.I.

Meet on the first Thursday of each month at 7.30pm in the village hall. Further details contact Maureen Jolliffe on 840867

## Sherston Young Craft Group

Every Monday 6.45 – 8.15pm in the village hall (children 9 years and over). £3 (incl all materials) per evening paid in advance of each half term. To join, please contact Victoria Parish on 840071 or email vparish@btinternet.com

## Splash Dance

Dance classes for 2 to 12 year olds including ballet, modern and tap. Every Wednesday afternoon in the village hall. Prices are £35 per term with the first lesson free. For details contact Charlotte on 01453 886632 or charlotte@splashdance.co.uk

## Tetbury Chess Club

Meet every Wednesday at the Ormond Hotel from 10am. If anyone is interested please contact Colin Francis on 505835 or email colval08@btinternet.com

## Village Hall 200+ Club

Monthly draw prizes ranging from £11 down to £5 for a £6 annual stake, plus a quarterly £5 bonus for 7 non-winners. If any new members of the village would like to join, contact either Mary Goulding on 840794, Joyce Gleed 840744 or Gwen Mason 840660.

## Whist Drive

A whist drive is held in the village hall on the second Friday in the month at 7.30 for 7.45pm. Admission £1.50 including refreshments. All profits to help maintain the village hall. Further details from G. Mason, M. Goulding and J. Gleed.

---

*If you run a club, society or organisation in Sherston that holds regular events such as the above and wishes to be listed, please supply your details and we will add them to the Regular events list. If you have a particular event then please write a short piece about it and we can include it as an article and put the details in the What's On list for that month.*

# What's on in 2011

## Dates for your diary

### Feb

- 5 Swimming Jumble  
12 James Morten's Porkchop - Village Hall

### March

- 8 Pancake Race

### April

- 21-25 Badminton Horse Trials  
29 Royal Wedding

### June

- 5 Woodland Frolic  
12 Mangold Maid Making

### July

- 9 -17 Boules & Carnival - Sat 16 Boules Day

### August

- 27 Lobber Jenkins Boules Competition  
29 Village Party including Flower Vegetable and Produce Show

### October

- 2 Mangold Hurl

### November

- 5 1016 Fireworks Party

### December

- 9 Anglo Saxon Christmas Market

If you're planning a community event in the parish why not let the Cliffhanger have the basic details as soon as possible?

Email [info@sherstoncliffhanger.co.uk](mailto:info@sherstoncliffhanger.co.uk) to add the event to this list. Everyone will then know what's occurring in good time and it will help prevent events clashing.

## **Barn Marq**

Reclamation  
& Recycling Centre

North End Ind. Estate Luckington

01666 840321

**TIMBER - TILES - STONE - BLOCKS ETC**

# WHAT'S ON

## Sherston

### The Carpenter's Arms

Curry Quiz Night

Sun 2 Jan

Scottish Night

Wed 26 Jan £9.95 pre-bookings only

Live Music

Sat 29 Jan

Further details contact 840665

### The Rattlebone Inn

The Rattlebone New Year's Eve Party -

'Back To The 80s - In The best Possible Taste'!

Fri 31 Dec

Rattlebone Boules League Prize giving

Tues 18 Jan

Boules and Carnival Kick Off evening

All welcome to come along and see how you can help out with Boules and Carnival 2011 Tues 25 Jan 7.30pm in the Restaurant

Wed 26 Jan 'Elvis will rock the Rattlebone

Further details contact 840871 or

[www.therattlebone.co.uk](http://www.therattlebone.co.uk)

### New Year Walk

Walk off the mince pies Tues 2 Jan starting from the village hall at 11am, returning to the Rattlebone Inn for complimentary seasonal victuals at around 1pm (no more mince pies) Free and suitable for all, including children and dogs on leads.

Further details contact Sue McKechnie 840601 or [suemckechnie@hotmail.com](mailto:suemckechnie@hotmail.com)

### Grove Wood Sunday Clearing

Please come along and help clear Grove Wood Every Sunday in January 10am - 1pm finishing with hot homemade soup

Further details contact Sue McKechnie 840601 or [suemckechnie@hotmail.com](mailto:suemckechnie@hotmail.com)

### Busy Hands Pre School

#### Annual Quiz Night

Raffle and auction. Sat 15 Jan Bar opens

7.30pm Quiz starts at 8pm £15 for a team of up to 4 All proceeds to Busy Hands Pre-school Sherston Village Hall



## Table Top Sale -

in aid of the Village Hall

Sat 29 Jan 9am - 12 noon Free admission (£5 for a table for sellers) Raffle, cakes and teas Village Hall

*Further details contact Lin on 840846 or Sheila on 840285*

## Sherston Ladies Swimming Club jumble sale

Sat 5 Feb 10am 9am - 12 noon Free admission - cake stall - all proceeds to the Ladies Swimming Club Village Hall

*Further details contact Annabel 840592, Maggie 840969, Heather 840375*

## WEA courses

'A Perusal of Plays' John Chambers

8 week course on Fri mornings commencing Fri 14 Jan at 10am £49.50

**Battle for Britain**

4 week course £28 Hullavington Village Hall

*Further details contact David or Muriel Bridge on 01666 502729 or [bridge.de@virgin.net](mailto:bridge.de@virgin.net)*

## Westonbirt

### The Arboretum

Admission £7 adult /£6 concs/ £3 chd under 5s free FOWA 50% discount on Fridays and any FOWA accompanying children go free.

**Summer Concerts - tickets now on sale**

Simple Minds Fri 17; Erasure Sat 18 and Scouting for Girls Sun 19 Jun Tickets £28-35 plus booking fee from 03000 680400 or [www.forestry.gov.uk/music](http://www.forestry.gov.uk/music)

**Specialist Wood Sales**

2nd Sunday every month in aid of FOWA

*Further details contact 880220 or [www.forestry.gov.uk/westonbirt](http://www.forestry.gov.uk/westonbirt)*

## Westonbirt School and the Holford Trust House & Gardens

Lecture: 'The Ministry of Food' by Jane Fearnley-Whittingstall

Fri 21 Jan 7.30pm Free. Bookable post lecture supper £15 book by 15 Jan

**Music from 4-MALITY**

Highly acclaimed percussion quartet Fri 4 Feb 7.30pm £16/£6

Westonbirt School

*Further details contact 880333 or for the gardens Jo Egerton on [joanne\\_egerton@hotmail.com](mailto:joanne_egerton@hotmail.com) or [www.westonbirt.gloucs.sch.uk](http://www.westonbirt.gloucs.sch.uk) and [www.holfordtrust.com](http://www.holfordtrust.com) for the gardens*

## Malmesbury

**White Horse Pictures -**

**Digital movie screenings.**

**Movies on Mondays**

Mon 10 Jan - Another Year 2pm, Harry Potter and the Deathly Hallows 5&8pm,  
24 Jan The American 2&8pm; The Secret of Kells 5pm

2pm & 5pm tickets £4 / £3 chd

8pm tickets £6

*Further details contact 822143 or*

*[www.whitehorsepictures.co.uk/venues/wiltshire-north/malmesbury-town-hall.htm](http://www.whitehorsepictures.co.uk/venues/wiltshire-north/malmesbury-town-hall.htm)*

## Cotswolds

**Cotswold Rural Skills**

**Hedgelaying courses**

22-23 Jan and 5-6 Feb Northleach 12-13 Feb Castle Combe £80

**Woodland Coppicing**

16-Jan £35 Littleworth Woods Broadway

*Further details contact David Molloy on 01451*

*862000 or [david.molloy@cotswoldsaonb.org.uk](mailto:david.molloy@cotswoldsaonb.org.uk)*

*or [www.cotswoldsaonb.org.uk](http://www.cotswoldsaonb.org.uk).*

## Charlton Park

**WOMAD - World Music Festival**

**Early bird ticket sales till 4 Jan 2011**

Thurs 28 - Sun 31 July 2011 SN16 residents' tickets £85 (max 6 tickets per SN16 household)/ Day tickets on sale now. Early bird weekend tickets £120 till 4 Jan 2011 Teenage weekend tickets £70

(must be accompanied by an adult ticket holder

*Further details contact 0870 759 96623 or [www.womad.org/festivals/charlton-park](http://www.womad.org/festivals/charlton-park)*

## Wotton-Under-Edge

**The Electric Picture House**

A refurbished local cinema run by the community

This month: Harry Potter and the Deathly Hallows; Megamind; Made in Dagenham; The Girl with the Dragon Tattoo; The Girl Who Played With Fire; The Girl Who Kicked the Hornets Nest; Another Year; The King's Speech; The Chronicles of Narnia: The Voyage of the Dawn Treader.

Check website for details.

*Further details contact 01453 844601 or*

*[www.wottoneph.co.uk](http://www.wottoneph.co.uk)*

## Nailsworth

### Forest Green Rovers F.C.

Home matches: BH Mon 3 Jan 3pm v Crawley  
Town and Sat 8 Jan 3pm v Fleetwood Town  
Adults £15/£13, Concessions £10/£8, under 16s £2  
The New Lawn Forest Green Nailsworth  
*Further details contact 01453 834860 or*  
*www.forestgreenroversfc.com*

## Bath

### Theatre Royal

#### Aladdin

till Sun 23 Jan 2pm and 7pm £10-£15 and  
Family Saver tickets available from £30 for 4  
**Agatha Christie's 'The Verdict'**  
Mon 24 - Sat 29 Jan 7.30pm / 8pm £17.50-£33.50  
**Book ahead for: Avenue Q; Life of Riley; The**  
**Nutcracker - a family musical; Yes, Prime**  
**Minister; The History Boys; Corrie! ; Jeffrey**  
**Bernard is Unwell; The Reluctant Debutante;**  
**Derek Jacobi in King Lear; Journey's End; To Kill**  
**a Mockingbird; Guys and Dolls**  
*Further details contact 01225 448844 or*  
*www.theatreroyal.org.uk*

## Bristol

### Pedal for Props Spinnathon Cycle Challenge

Sat 8 - Sun 9 Jan Sponsored cycle challenge  
in aid of Props (Providing Opportunities and  
Support) which champions the inclusion  
of disabled young people within the wider  
community  
Cribbs Causeway Mall  
*Further details contact Dave Reeves 07525 336696*  
*or www.propsforward.org and www.pedalforprops.org*

# Useful Numbers

BT fault line 0800 800151

CLARENCE (Highway complaints) 0800 232323

Cllr John Thomson 01666 840785

Malmesbury Activity Zone 01666 822533

Malmesbury Library 01666 823611

Malmesbury Police 0845 4087000

Malmesbury Primary Care Centre 01666 825825

Malmesbury Secondary School 01666 829700

Malmesbury Youth Centre 0799 0908550

MP James Gray 01249 652851

NHS Direct 0845 4647

Sherston Parish Council 01666 840351

Sherston Post Office 01666 840202

Sherston School 01666 840237

Sherston Village Hall (bookings) 01666 840633

Tolsey Surgery 01666 840270

Wiltshire Council 0300 4560100

**PAWS FOR THOUGHT**

PROFESSIONAL  
DOG WALKING  
AND MINDING SERVICE

A tailor-made service for you  
and your best friend.  
Experienced in dog training and  
obedience. Also fully insured and  
knowledgeable in canine first aid.  
Please call Sophie  
Francis on 01666 840538  
(Sherston) for more  
information  
Reference available on request



**kay adkins**  
photographic artist

Portrait  
Weddings  
Passports  
Events



tel: 01666 390395  
mob: 0797 1688302  
e: kayadkins@longfurlong.co.uk  
w: kayadkinslongfurlong.co.uk

**R&B VEHICLE SERVICES**  
Est. 10 years

**01454 238700**

REPAIRS, SERVICING  
DIAGNOSTICS, BATTERIES  
TYRES, EXHAUSTS  
FOR CAR, 4 X 4 & LIGHT VANS  
FREE LOAN CARS AVAILABLE  
YOU CAN NOW BOOK YOUR MOT  
ONLINE AT  
[www.mottetbury.co.uk](http://www.mottetbury.co.uk)




COST EFFECTIVE MAINTENANCE AT A FRACTION OF DEALER PRICES  
CALL RICHARD OR BEN FOR FRIENDLY, RELIABLE SERVICE

**Great Bounds Dog Hotel**

An Extensive Resort set in the Heart  
of the Wiltshire Countryside

Purpose built Hotel offering so much more  
than just boarding.



The ultimate in care  
and comfort.  
Underfoot Heating.  
TV's and Music.  
Private 60sq ft terrace  
with en-suite facilities.  
Country walks twice daily.  
Very competitive rates.

Telephone: 01249 740437  
Hare Street Farm, Hare Street, East Tytherton,  
Chippenham SN15 4LZ